



U.S. Department of Transportation  
Office of Public Affairs  
1200 New Jersey Avenue, SE  
Washington, DC 20590  
[www.dot.gov/briefing-room.html](http://www.dot.gov/briefing-room.html)

## BTS Data

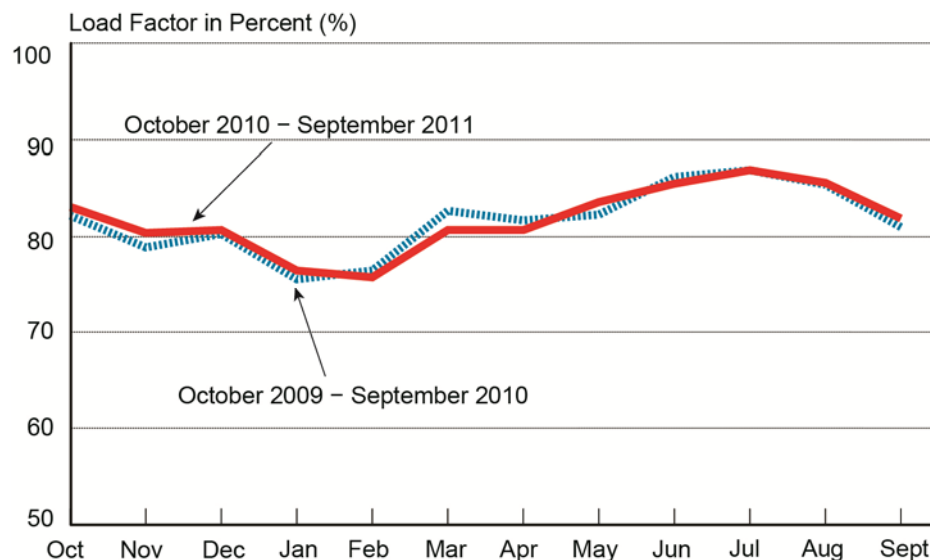
BTS 61-11  
Thursday, December 8, 2011  
Contact: Dave Smallen  
Tel: 202-366-5568

### September 2011 Airline System Traffic Up 1.2 Percent from September 2010

The U.S. Department of Transportation's Bureau of Transportation Statistics (BTS) today reported in a release of preliminary data that U.S. airlines carried 58.0 million scheduled domestic and international passengers in September 2011. This is a 1.2 percent increase over September 2010 (Table 1). The September 2011 passenger total was 6.0 percent above that of two years ago in September 2009 (Table 2).

BTS, a part of DOT's Research and Innovative Technology Administration, also reported that U.S. airlines carried 1.3 percent more domestic passengers in September 2011 than in September 2010. The system load factor of 81.9 percent and the domestic load factor of 81.8 percent were record highs for the month of September. The number of international passengers on U.S. carriers in September 2011 increased 0.4 percent from September 2010 (Table 13).

#### Passenger Load Factor on All U.S. Scheduled Airlines (Domestic & International), October 2009-September 2011



- more -

## AIRLINE TRAFFIC PRESS RELEASE

### ADD ONE

U.S. airlines carried 551.8 million total system passengers during the first nine months of 2011, up 1.9 percent from the same period in 2010 (Table 2). Domestically, they carried 480.5 million passengers, up 1.8 percent from 2010 (Table 8). Internationally, they carried 71.3 million passengers, up 2.7 percent from 2010 (Table 14). Systemwide, domestic and international totals were all the highest for January through September since 2008. See Tables 2, 8 and 14 of [Air Traffic Press Releases](#) for previous year numbers.

Additional traffic numbers can be found on the [BTS website](#) in the Airlines and Airports box. Click on a link in the column on the right.

### Load Factor

Systemwide load factors were up 0.9 percentage points in September 2011 from September 2010. The international load factor was down 1.5 percentage points from September 2010 but remained higher than the domestic load factor. From January through September, systemwide capacity, measured by available seat-miles, was up 2.9 percent, domestic was up 1.7 percent and international was up 5.6 percent compared to the first nine months of 2010 (Tables 1, 7, 13).

### Top Airlines

**Monthly:** In September, Delta Air Lines carried more total system and international passengers than any other U.S. airline (Tables 4, 16) and Southwest Airlines carried the most domestic passengers (Table 10).

**Year-to-date:** During the first nine months of 2011, Delta carried more total system and international passengers while Southwest carried more domestic passengers than any other U.S. airline (Tables 3, 9, 15).

### Top Airports

**Monthly:** In September, more total system and domestic passengers boarded planes at Atlanta Hartsfield-Jackson International than at any other U.S. airport (Tables 6, 12); and more international passengers boarded U.S. carriers at New York JFK than at any other U.S. airport (Table 18).

**Year-to-date:** During the first nine months of 2011, more total system and domestic passengers boarded planes at Atlanta Hartsfield-Jackson than at any other U.S. airport (Tables 5 and 11); and more international passengers boarded U.S. carriers at Miami than at any other U.S. airport (Table 17).

- more -

**AIRLINE TRAFFIC PRESS RELEASE**  
**ADD TWO**

For other year-to-date and monthly comparisons, see the following tables:

**System (Domestic + International) (Tables 1-6)**

**Table 1** (September and January through September):

Passengers  
Flights  
Revenue passenger-miles (RPMs)  
Available seat-miles (ASMs)  
Passenger load factor  
Flight stage length  
Passenger trip length

**Table 2**

System scheduled enplanements on U.S. airlines by month since January 2009

**Airline Rankings**

**Table 3**

January through September: Top 10 airlines by scheduled passenger enplanements

**Table 4**

September: Top 10 airlines by scheduled passenger enplanements

**Airport Rankings**

**Table 5**

January through September: Top 10 airports by scheduled passenger enplanements on U.S. airlines

**Table 6**

September: Top 10 airports by scheduled passenger enplanements on U.S. airlines

**-more-**

**AIRLINE TRAFFIC PRESS RELEASE  
ADD THREE**

**Scheduled Domestic Air Travel (Tables 7-12)**

**Table 7** (September and January through September):

Domestic passengers

Domestic flights

Domestic revenue passenger-miles (RPMs)

Domestic available seat-miles (ASMs)

Domestic passenger load factor

Domestic flight stage length

Domestic passenger trip length

**Table 8**

Domestic scheduled enplanements on U.S. airlines by month since January 2009

**Airline Rankings**

**Table 9**

January through September: Top 10 domestic airlines by scheduled passenger enplanements

**Table 10**

September: Top 10 domestic airlines by scheduled passenger enplanements

**Airport Rankings**

**Table 11**

January through September: Top 10 domestic airports by scheduled passenger enplanements

**Table 12**

September: Top 10 domestic airports by scheduled passenger enplanements

**Scheduled International Air Travel on U.S. Airlines (Tables 13-18)**

**Table 13** (September and January through September):

International passengers

International flights

International revenue passenger-miles on U.S. airlines (RPMs)

International available seat-miles on U.S. airlines (ASMs)

International passenger load factor on U.S. airlines

International flight stage length on U.S. airlines

International passenger trip length on U.S. airlines

**Table 14**

International scheduled enplanements on U.S. airlines by month since January 2009

## **AIRLINE TRAFFIC PRESS RELEASE ADD FOUR**

### **Airline Rankings**

#### **Table 15**

January through September: Top 10 U.S. airlines by scheduled international passenger enplanements

#### **Table 16**

September: Top 10 U.S. airlines by scheduled international passenger enplanements

### **Airport Rankings**

#### **Table 17**

January through September: Top 10 airports by scheduled international passenger enplanements on U.S. airlines

#### **Table 18**

September: Top 10 airports by scheduled international passenger enplanements on U.S. airlines

### **Reporting Notes**

Data are compiled from monthly reports filed with BTS by commercial U.S. air carriers detailing operations, passenger traffic and freight traffic. This release includes data received by BTS from 79 carriers as of Nov. 30 for U.S. carrier **scheduled** civilian operations. Go to <http://www.transtats.bts.gov/releaseinfo.asp> for the complete list of reporting and non-reporting carriers. U.S. carriers' foreign point-to-point flights are included in system and international totals. To create a customized table for passengers, flights, RPMs, ASMs and other data, including non-scheduled service, go to [http://www.bts.gov/programs/airline\\_information/air\\_carrier\\_traffic\\_statistics/](http://www.bts.gov/programs/airline_information/air_carrier_traffic_statistics/).

Traffic numbers are available on the BTS website at TranStats, the Intermodal Transportation Database, at <http://transtats.bts.gov>. Click on "Aviation." For system passengers, RPMs and ASMs by carrier through September, click on "Air Carrier Summary Data (Form 41 and 298C Summary Data)," and then click on "Schedule T-1." Use crosstabs to find scheduled service.

For domestic numbers through September and international numbers through June by origin as well as by carrier, after clicking on "Aviation," click on "Air Carrier Statistics (Form 41 Traffic)." Click on "T-100 Market" for system passenger numbers, "T-100 Domestic Market" for domestic or "T-100 International Market" for international. For flights, stage length and trip length, use the appropriate T-100 Segment database. Use crosstabs to find scheduled service.

TranStats system and international totals do not include U.S. carriers' foreign point-to-point flights. For September, U.S. carriers reported 192,722 foreign point-to-point passengers. For January through September, U.S. carriers reported 1,851,026 foreign point-to-point passengers.

Data are subject to revision. BTS has scheduled Jan. 18 for the release of October traffic data.

**-more-**

**AIRLINE TRAFFIC PRESS RELEASE  
ADD FIVE**

**Table 1: Scheduled System (Domestic and International) Airline Travel on U.S. Airlines**

	Monthly			Year-to-Date		
	Sept 2010	Sept 2011	Change %	2010	2011	Change %
Passengers (in millions)	57.4	58.0	1.2	541.6	551.8	1.9
Flights (in thousands)	780.7	763.8	-2.2	7,182.5	7,166.3	-0.2
Revenue Passenger Miles (in billions)	64.5	65.5	1.6	602.4	619.0	2.8
Available Seat-Miles (in billions)	79.6	80.0	0.5	732.3	753.6	2.9
Load Factor*	81.0	81.9	0.9	82.3	82.1	-0.2
Flight Stage Length**	725.1	740.6	2.1	728.3	744.7	2.3
Passenger Trip Length***	1,124.5	1,128.6	0.4	1,112.2	1,121.8	0.9

Source: Bureau of Transportation Statistics, T-100 Market and Segment

\*Change in load factor points

\*\*The average non-stop distance flown per departure in miles

\*\*\* The average distance flown per passenger in miles

Note: Percent changes based on numbers prior to rounding.

**Table 2. Total System (Domestic and International) Scheduled Enplanements on U.S. Airlines**

Passenger numbers in millions (000,000)

	2009	2010	2009- 2010 Pct. Change	2011	2010-2011 Pct. Change
January	51.8	52.6	1.4	53.7	2.2
February	49.8	48.7	-2.3	50.1	2.9
March	61.0	62.2	2.0	63.6	2.2
April	59.5	59.6	0.2	60.5	1.5
May	59.7	61.5	2.9	63.9	3.9
June	63.6	65.0	2.3	66.1	1.7
July	68.1	68.4	0.5	69.8	2.0
August	65.0	66.3	1.9	66.2	-0.1
<b>September</b>	<b>54.7</b>	<b>57.4</b>	<b>4.9</b>	<b>58.0</b>	<b>1.2</b>
October	58.8	62.1	5.6		
November	54.8	58.2	6.1		
December	56.9	58.6	2.9		
<b>9 Mo. Total</b>	<b>533.3</b>	<b>541.6</b>	<b>1.6</b>	<b>551.8</b>	<b>1.9</b>
<b>Yr. Total</b>	<b>703.9</b>	<b>720.5</b>	<b>2.4</b>		

Source: Bureau of Transportation Statistics, T-100 Market

Note: Percent changes based on numbers prior to rounding.

-more-

**AIRLINE TRAFFIC PRESS RELEASE**  
**ADD SIX**

**Table 3. Top 10 U.S. Airlines, ranked by January-September 2011 System\* Scheduled Enplanements**  
 Passenger numbers in millions (000,000)

Jan-Sept 2011 Rank	Carrier	Jan-Sept 2011 Enplaned Passengers	Jan-Sept 2010 Rank	Jan-Sept 2010 Enplaned Passengers	Pct. Change 2010-2011
1	Delta	86.293	1	83.708	3.1
2	Southwest	82.931	2	79.064	4.9
3	American	64.990	3	64.823	0.3
4	US Airways	39.802	5	38.834	2.5
5	United	38.634	4	41.001	-5.8
6	Continental	34.230	6	32.708	4.7
7	JetBlue	19.663	9	18.166	8.2
8	AirTran	18.733	7	18.452	1.5
9	SkyWest	17.996	8	18.224	-1.3
10	Alaska	13.459	11	12.345	9.0

Source: Bureau of Transportation Statistics, T-100 Market

\* System equals domestic plus international

Note: Percent changes based on numbers prior to rounding.

Note: For previous rankings see [BTS Air Traffic Press Releases](#)

**Table 4. Top 10 U.S. Airlines, ranked by September 2011 System\* Scheduled Enplanements**  
 Passenger numbers in millions (000,000)

Sept 2011 Rank	Carrier	Sept 2011 Enplaned Passengers	Sept 2010 Rank	Sept 2010 Enplaned Passengers	Pct. Change 2010-2011
1	Delta	9.203	1	9.039	1.8
2	Southwest	8.751	2	8.310	5.3
3	American	6.851	3	6.696	2.3
4	US Airways	4.100	5	4.191	-2.2
5	United	4.098	4	4.402	-6.9
6	Continental	3.362	6	3.228	4.1
7	JetBlue	2.013	8	1.868	7.8
8	SkyWest	1.999	7	2.024	-1.3
9	AirTran	1.761	9	1.813	-2.8
10	American Eagle	1.477	10	1.375	7.4

Source: Bureau of Transportation Statistics, T-100 Market

\* System equals domestic plus international

Note: Percent changes based on numbers prior to rounding.

Note: For previous rankings see [BTS Air Traffic Press Releases](#)

- more -

**AIRLINE TRAFFIC PRESS RELEASE**  
**ADD SEVEN**

**Table 5. Top 10 U.S. Airports, ranked by January-September 2011 System\* Scheduled Enplanements on U.S. Airlines\*\***  
 Passenger numbers in millions (000,000)

Jan-Sept 2011 Rank	Airport	Jan-Sept 2011 Enplaned Passengers	Jan-Sept 2010 Rank	Jan-Sept 2010 Enplaned Passengers	Pct. Change 2010-2011
1	Atlanta	32.910	1	31.898	3.2
2	Chicago O'Hare	22.350	2	22.658	-1.4
3	Dallas/Ft. Worth	20.369	3	19.958	2.1
4	Denver	19.166	4	18.843	1.7
5	Los Angeles	18.363	5	17.125	7.2
6	Phoenix	14.664	7	13.939	5.2
7	Charlotte	14.204	8	13.698	3.7
8	Houston Bush	13.892	6	14.008	-0.8
9	Las Vegas	13.876	9	13.370	3.8
10	San Francisco	12.912	10	12.484	3.4

Source: Bureau of Transportation Statistics, T-100 Market

\* System equals domestic plus international

\*\* Numbers do not include international enplanements on foreign carriers

Note: Percent changes based on numbers prior to rounding.

Note: For previous rankings see [BTS Air Traffic Press Releases](#)

**Table 6. Top 10 U.S. Airports ranked by September 2011 System\* Scheduled Enplanements on U.S. Airlines\*\***  
 Passenger numbers in millions (000,000)

Sept 2011 Rank	Airport	Sept 2011 Enplaned Passengers	Sept 2010 Rank	Sept 2010 Enplaned Passengers	Pct. Change 2010-2011
1	Atlanta	3.533	1	3.439	2.7
2	Chicago O'Hare	2.533	2	2.541	-0.3
3	Dallas/Fort Worth	2.230	3	2.141	4.1
4	Denver	2.088	4	2.065	1.1
5	Los Angeles	1.951	5	1.805	8.1
6	Las Vegas	1.552	7	1.445	7.4
7	San Francisco	1.511	8	1.426	6.0
8	Charlotte	1.485	6	1.570	-5.4
9	Phoenix	1.457	10	1.399	4.2
10	Houston Bush	1.358	9	1.403	-3.2

Source: Bureau of Transportation Statistics, T-100 Market

\* System equals domestic plus international

\*\* Numbers do not include international enplanements on foreign carriers

Note: Percent changes based on numbers prior to rounding.

Note: For previous rankings see [BTS Air Traffic Press Releases](#)

- more -



**AIRLINE TRAFFIC PRESS RELEASE  
ADD EIGHT**

**Table 7: Domestic Scheduled Airline Travel on U.S. Airlines**

	Monthly			Year-to-Date		
	Sept 2010	Sept 2011	Change %	2010	2011	Change %
Passengers (in millions)	50.3	51.0	1.3	472.2	480.5	1.8
Flights (in thousands)	718.5	701.2	-2.4	6,555.0	6,533.2	-0.3
Revenue Passenger Miles (in billions)	43.7	44.6	2.0	416.1	426.2	2.4
Available Seat-Miles (in billions)	54.7	54.5	-0.5	505.4	513.9	1.7
Load Factor*	79.9	81.8	1.9	82.3	82.9	0.6
Flight Stage Length**	619.7	630.3	1.7	626.0	635.9	1.6
Passenger Trip Length***	868.6	874.9	0.7	881.3	887.0	0.7

Source: Bureau of Transportation Statistics, T-100 Domestic Market and Segment

\* Change in load factor points

\*\*The average non-stop distance flown per departure in miles

\*\*\* The average distance flown per passenger in miles

Note: Percent changes based on numbers prior to rounding.

**Table 8. Domestic Scheduled Enplanements on U.S. Airlines  
Passenger numbers in millions (000,000)**

	2009	2010	2009-2010 Pct. Change	2011	2010- 2011 Pct. Change
January	44.8	45.5	1.5	46.3	1.8
February	43.7	42.4	-2.8	43.7	2.9
March	53.5	54.4	1.7	55.6	2.2
April	52.2	52.5	0.5	52.9	0.7
May	52.9	53.8	1.7	56.0	4.0
June	55.9	56.7	1.4	57.6	1.7
July	59.5	59.1	-0.5	60.2	1.8
August	56.6	57.4	1.4	57.3	-0.2
<b>September</b>	<b>48.2</b>	<b>50.3</b>	<b>4.3</b>	<b>51.0</b>	<b>1.3</b>
October	52.3	54.8	4.9		
November	48.6	51.4	5.8		
December	49.8	51.1	2.6		
<b>9 Mo. Total</b>	<b>467.4</b>	<b>472.2</b>	<b>1.0</b>	<b>480.5</b>	<b>1.8</b>
<b>Yr. Total</b>	<b>618.1</b>	<b>629.5</b>	<b>1.9</b>		

Source: Bureau of Transportation Statistics, T-100 Domestic Market

Note: Percent changes based on numbers prior to rounding.

- more -

**AIRLINE TRAFFIC PRESS RELEASE**  
**ADD NINE**

**Table 9. Top 10 U.S. Airlines, ranked by January-September 2011 Domestic Scheduled Enplanements**  
 Passenger numbers in millions (000,000)

Jan-Sept 2011 Rank	Carrier	Jan-Sept 2011 Enplaned Passengers	Jan-Sept 2010 Rank	Jan-Sept 2010 Enplaned Passengers	Pct. Change 2010-2011
1	Southwest	82.931	1	79.064	4.9
2	Delta	70.022	2	67.530	3.7
3	American	49.181	3	49.433	-0.5
4	US Airways	34.502	4	33.613	2.6
5	United	30.259	5	32.829	-7.8
6	Continental	23.388	6	22.882	2.2
7	AirTran	18.103	7	18.095	0.0
8	JetBlue	17.084	9	15.781	8.3
9	SkyWest	16.743	8	17.033	-1.7
10	Alaska	12.115	11	11.169	8.5

Source: Bureau of Transportation Statistics, T-100 Domestic Market

Note: Percent changes based on numbers prior to rounding.

Note: For previous rankings see [BTS Air Traffic Press Releases](#)

**Table 10. Top 10 U.S. Airlines, ranked by September 2011 Domestic Scheduled Enplanements**  
 Passenger numbers in millions (000,000)

Sept 2011 Rank	Carrier	Sept 2011 Enplaned Passengers	Sept 2010 Rank	Sept 2010 Enplaned Passengers	Pct. Change 2010-2011
1	Southwest	8.751	1	8.310	5.3
2	Delta	7.507	2	7.326	2.5
3	American	5.278	3	5.120	3.1
4	US Airways	3.621	4	3.716	-2.5
5	United	3.172	5	3.499	-9.3
6	Continental	2.363	6	2.310	2.3
7	SkyWest	1.860	7	1.871	-0.6
8	JetBlue	1.759	9	1.640	7.3
9	AirTran	1.708	8	1.785	-4.3
10	American Eagle	1.359	10	1.282	6.0

Source: Bureau of Transportation Statistics, T-100 Domestic Market

Note: Percent changes based on numbers prior to rounding.

Note: For previous rankings see [BTS Air Traffic Press Releases](#)

**-more-**

**AIRLINE TRAFFIC PRESS RELEASE**  
**ADD TEN**

**Table 11. Top 10 U.S. Airports, ranked by January-September 2011 Domestic Scheduled Enplanements**  
 Passenger numbers in millions (000,000)

Jan-Sept 2011 Rank	Airport	Jan-Sept 2011 Enplaned Passengers	Jan-Sept 2010 Rank	Jan-Sept 2010 Enplaned Passengers	Pct. Change 2010-2011
1	Atlanta	29.709	1	28.791	3.2
2	Chicago O'Hare	19.995	2	20.348	-1.7
3	Denver	18.690	3	18.311	2.1
4	Dallas/Fort Worth	18.650	4	18.308	1.9
5	Los Angeles	16.867	5	15.886	6.2
6	Phoenix	14.081	7	13.328	5.6
7	Las Vegas	13.863	6	13.358	3.8
8	Charlotte	13.175	8	12.745	3.4
9	Orlando	11.806	9	11.599	1.8
10	San Francisco	11.640	11	11.288	3.1

Source: Bureau of Transportation Statistics, T-100 Domestic Market

Note: Percent changes based on numbers prior to rounding.

Note: For previous rankings see [BTS Air Traffic Press Releases](#)

**Table 12. Top 10 U.S. Airports, ranked by September 2011 Domestic Scheduled Enplanements**  
 Passenger numbers in millions (000,000)

Sept 2011 Rank	Airport	Sept 2011 Enplaned Passengers	Sept 2010 Rank	Sept 2010 Enplaned Passengers	Pct. Change 2010-2011
1	Atlanta	3.233	1	3.140	3.0
2	Chicago O'Hare	2.275	2	2.281	-0.3
3	Dallas/Fort Worth	2.057	4	1.971	4.4
4	Denver	2.049	3	2.019	1.5
5	Los Angeles	1.804	5	1.685	7.0
6	Las Vegas	1.551	7	1.444	7.4
7	Phoenix	1.415	8	1.352	4.7
8	Charlotte	1.397	6	1.485	-5.9
9	San Francisco	1.365	9	1.284	6.3
10	Seattle	1.259	10	1.218	3.4

Source: Bureau of Transportation Statistics, T-100 Domestic Market

Note: Percent changes based on numbers prior to rounding.

Note: For previous rankings see [BTS Air Traffic Press Releases](#)

-more-

**AIRLINE TRAFFIC PRESS RELEASE**  
**ADD ELEVEN**

**Table 13: International Scheduled Airline Travel on U.S. Airlines**

	Monthly			Year-to-Date		
	Sept 2010	Sept 2011	Change %	2010	2011	Change %
Passengers (in millions)	7.0	7.1	<b>0.4</b>	69.4	71.3	<b>2.7</b>
Flights (in thousands)	62.2	62.6	<b>0.7</b>	627.5	633.1	<b>0.9</b>
Revenue Passenger Miles (in billions)	20.8	20.9	<b>0.5</b>	186.3	192.8	<b>3.5</b>
Available Seat-Miles (in billions)	24.9	25.5	<b>2.5</b>	227.0	239.7	<b>5.6</b>
Load Factor*	83.5	82.0	<b>-1.5</b>	82.1	80.4	<b>-1.7</b>
Flight Stage Length**	1,943.3	1,975.4	<b>1.7</b>	1,796.6	1,867.3	<b>3.9</b>
Passenger Trip Length***	2,951.6	2,955.8	<b>0.1</b>	2,683.4	2,703.9	<b>0.8</b>

Source: Bureau of Transportation Statistics, T-100 International Market and Segment

\*Change in load factor points

\*\*The average non-stop distance flown per departure in miles

\*\*\* The average distance flown per passenger in miles

Note: Percent changes based on numbers prior to rounding.

**Table 14: International Scheduled Enplanements on U.S. Airlines**  
**Passenger numbers in millions (000,000)**

	2009	2010	2009-2010 Pct. Change	2011	2010- 2011 Pct. Change
January	7.0	7.0	0.9	7.4	4.8
February	6.2	6.2	1.2	6.4	2.9
March	7.4	7.8	4.7	7.9	1.7
April	7.3	7.2	-1.8	7.7	7.1
May	6.8	7.6	12.2	7.9	3.2
June	7.7	8.3	8.4	8.5	1.7
July	8.6	9.3	7.5	9.6	3.3
August	8.5	8.9	4.9	8.9	0.0
<b>September</b>	<b>6.4</b>	<b>7.0</b>	<b>9.4</b>	<b>7.1</b>	<b>0.4</b>
October	6.5	7.3	11.8		
November	6.3	6.7	7.8		
December	7.2	7.5	5.0		
<b>9 Mo. Total</b>	<b>65.9</b>	<b>69.4</b>	<b>5.3</b>	<b>71.3</b>	<b>2.7</b>
<b>Yr. Total</b>	<b>85.8</b>	<b>91.0</b>	<b>6.0</b>		

Source: Bureau of Transportation Statistics, T-100 International Market

Note: Percent changes based on numbers prior to rounding.

**-more-**

**AIRLINE TRAFFIC PRESS RELEASE**  
**ADD TWELVE**

**Table 15: Top 10 U.S. Airlines, ranked by January-September 2011 International Scheduled Enplanements**  
 Passenger numbers in thousands (000)

Jan-Sept 2011 Rank	Carrier	Jan-Sept 2011 Enplaned Passengers	Jan-Sept 2010 Rank	Jan-Sept 2010 Enplaned Passengers	Pct. Change 2010- 2011
1	Delta	16,271.2	1	16,178.5	0.6
2	American	15,808.8	2	15,389.9	2.7
3	Continental	10,841.9	3	9,826.2	10.3
4	United	8,375.5	4	8,171.1	2.5
5	US Airways	5,299.6	5	5,221.9	1.5
6	JetBlue	2,579.5	6	2,385.1	8.1
7	Alaska	1,344.2	9	1,175.2	14.4
8	SkyWest	1,253.6	8	1,191.3	5.2
9	ExpressJet	1,112.4	7	1,382.6	-19.5
10	Spirit	1,042.2	11	892.1	16.8

Source: Bureau of Transportation Statistics, T-100 International Market

Note: For previous rankings see [BTS Air Traffic Press Releases](#)

**Table 16. Top 10 U.S. Airlines, ranked by September 2011 International Scheduled Enplanements**  
 Passenger numbers in thousands (000)

Sept 2011 Rank	Carrier	Sept 2011 Enplaned Passengers	Sept 2010 Rank	Sept 2010 Enplaned Passengers	Pct. Change 2010- 2011
1	Delta	1,695.3	1	1,713.4	-1.1
2	American	1,573.6	2	1,575.3	-0.1
3	Continental	998.4	3	918.5	8.7
4	United	926.2	4	903.6	2.5
5	US Airways	478.7	5	474.6	0.9
6	JetBlue	253.8	6	228.3	11.2
7	SkyWest	138.5	7	153.1	-9.5
8	ExpressJet	130.6	8	134.0	-2.5
9	Alaska	119.5	10	98.1	21.9
10	American Eagle	118.0	11	93.7	25.9

Source: Bureau of Transportation Statistics, T-100 International Market

Note: Percent changes based on numbers prior to rounding.

Note: For previous rankings see [BTS Air Traffic Press Releases](#)

-more-

**AIRLINE TRAFFIC PRESS RELEASE**  
**ADD THIRTEEN**

**Table 17. Top 10 U.S. Airports, ranked by January-September 2011 International Scheduled Enplanements on U.S. Airlines\***

Passenger numbers in thousands (000)

Jan-Sept 2011 Rank	Airport	Jan-Sept 2011 Enplaned Passengers	Jan-Sept 2010 Rank	Jan-Sept 2010 Enplaned Passengers	Pct. Change 2010- 2011
1	Miami	4,033.8	1	3,846.7	4.9
2	New York JFK	3,726.4	2	3,646.2	2.2
3	Atlanta	3,201.5	4	3,107.7	3.0
4	Newark	3,046.9	3	3,112.8	-2.1
5	Houston Bush	2,533.5	5	2,513.7	0.8
6	Chicago O'Hare	2,355.1	6	2,309.9	2.0
7	Dallas/Ft. Worth	1,719.2	7	1,650.0	4.2
8	Los Angeles	1,496.5	9	1,239.2	20.8
9	Philadelphia	1,292.8	8	1,284.4	0.7
10	San Francisco	1,272.0	10	1,196.2	6.3

Source: Bureau of Transportation Statistics, T-100 International Market

\* Numbers do not include international enplanements on foreign carriers

Note: Percent changes based on numbers prior to rounding.

Note: For previous rankings see [BTS Air Traffic Press Releases](#)

**Table 18. Top 10 U.S. Airports, ranked by September 2011 International Scheduled Enplanements on U.S. Airlines\***

Passenger numbers in thousands (000)

Sept 2011 Rank	Airport	Sept 2011 Enplaned Passengers	Sept 2010 Rank	Sept 2010 Enplaned Passengers	Pct. Change 2010- 2011
1	New York JFK	399.0	1	412.5	-3.3
2	Miami	379.6	2	364.9	4.0
3	Newark	300.2	3	310.8	-3.4
4	Atlanta	300.2	4	299.2	0.3
5	Chicago O'Hare	258.4	5	259.2	-0.3
6	Houston Bush	205.3	6	225.2	-8.8
7	Dallas/Ft. Worth	172.5	7	170.6	1.1
8	Los Angeles	147.7	11	119.5	23.6
9	San Francisco	145.8	9	142.4	2.4
10	Washington Dulles	141.2	10	135.6	4.1

Source: Bureau of Transportation Statistics, T-100 International Market

\* Numbers do not include international enplanements on foreign carriers

Note: Percent changes based on numbers prior to rounding.

Note: For previous rankings see [BTS Air Traffic Press Releases](#)

- end -