

NYC Urban Freight

Talking Freight

March 16, 2016

Stacey D. Hodge

Director Office of Freight Mobility

New York City Department of Transportation

NEW YORK CITY



New York City

- Area 302 square miles
- NYC has 5 Boroughs
- **Population 8.4 Million in NYC**
- New York metro area has almost 20 million residents
- **An additional 1.7 million by 2040**





ONE WAY

Broadway

fresh

CLARKE'S STANDARD

870

fresh

fresh

fresh

BEER & CIGARS
B
we go

St. Mark's

What are you eating?
UPPER MERIDEN
GR





**Street
Seats**

Benefits, Street Seats

Economic

Sales up 10-15%

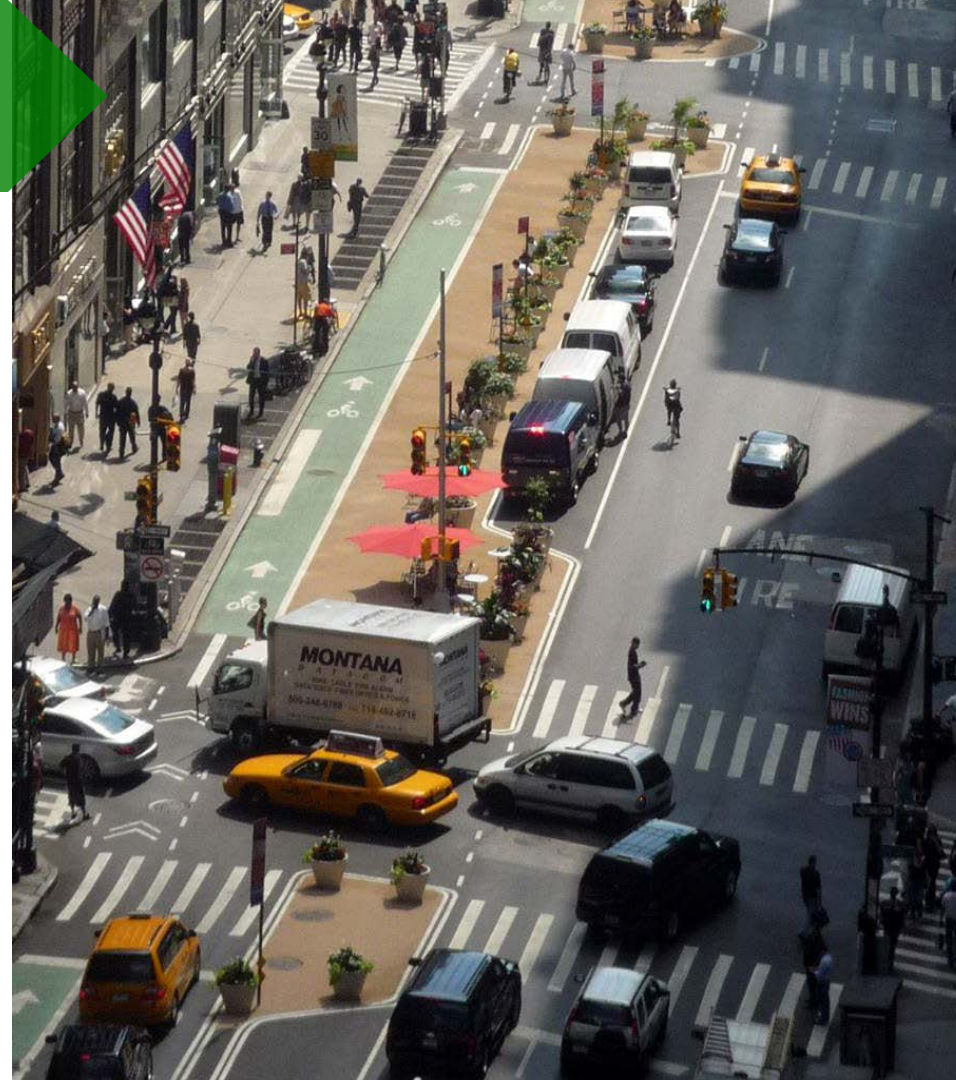
Public life benefits

- More active street life
- 116% more people sitting outside on Pearl Street at lunchtime
- Space of one parked car utilized by 100 people in a day
- Provides greenery and seating; opens views across street



Our Challenge

In order to design our streets to accommodate deliveries, provide bike lanes, bus lanes, and plaza spaces, while also increasing safety for users and supporting the economy, we need to better understand the activity and constraints of all modes.



Truck Trips Demand

A week of Truck Deliveries to a Midtown Luxury Hotel

M



Tu



W



Th



F



Commercial Building in Midtown Manhattan

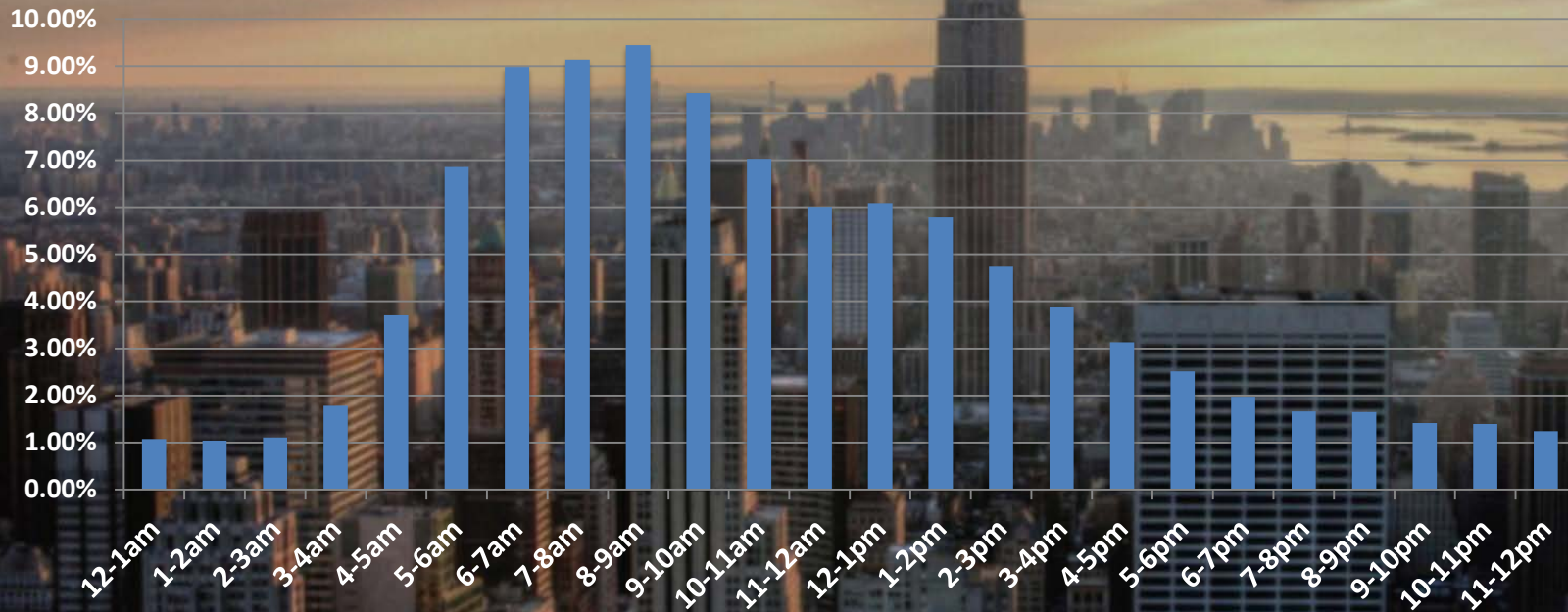
That dominate delivery traffic

1. Empire State Building
2. Lincoln Building
3. 1 Penn Plaza
4. Graybar Building
5. 450 Fashion Avenue
6. General Electric Building
7. Met Life Building
8. Fisk Building



Manhattan Truck Daily Profile

Approx. 28,000 trucks enter Manhattan per day



Reduce Conflicts

Grand Central Partnership Area

- More than 16,000 pedestrians per hour on average at a single point weekday peak time
- Approximately 900 retail stores and boutiques
- More than 30 luxury hotels
- Approximately 150 full-service restaurants



Source: Grand Central Partnership, Annual Report 2011

OneNYC – Transportation Vision

New York City's transportation network will be **reliable, safe, sustainable, and accessible**, meeting the needs of all New Yorkers and **supporting the city's growing economy**



Truck Safety Initiatives

- Enforcement
- Education – Trucks Eye View
- Legislation – Cross over mirrors, speed limit
- Engineering & Technology
 - CCTV
 - Weigh in Motion
- Off Hour Deliveries – reduce conflicts between vulnerable users



CCTV Truck Monitoring



Delivery Windows

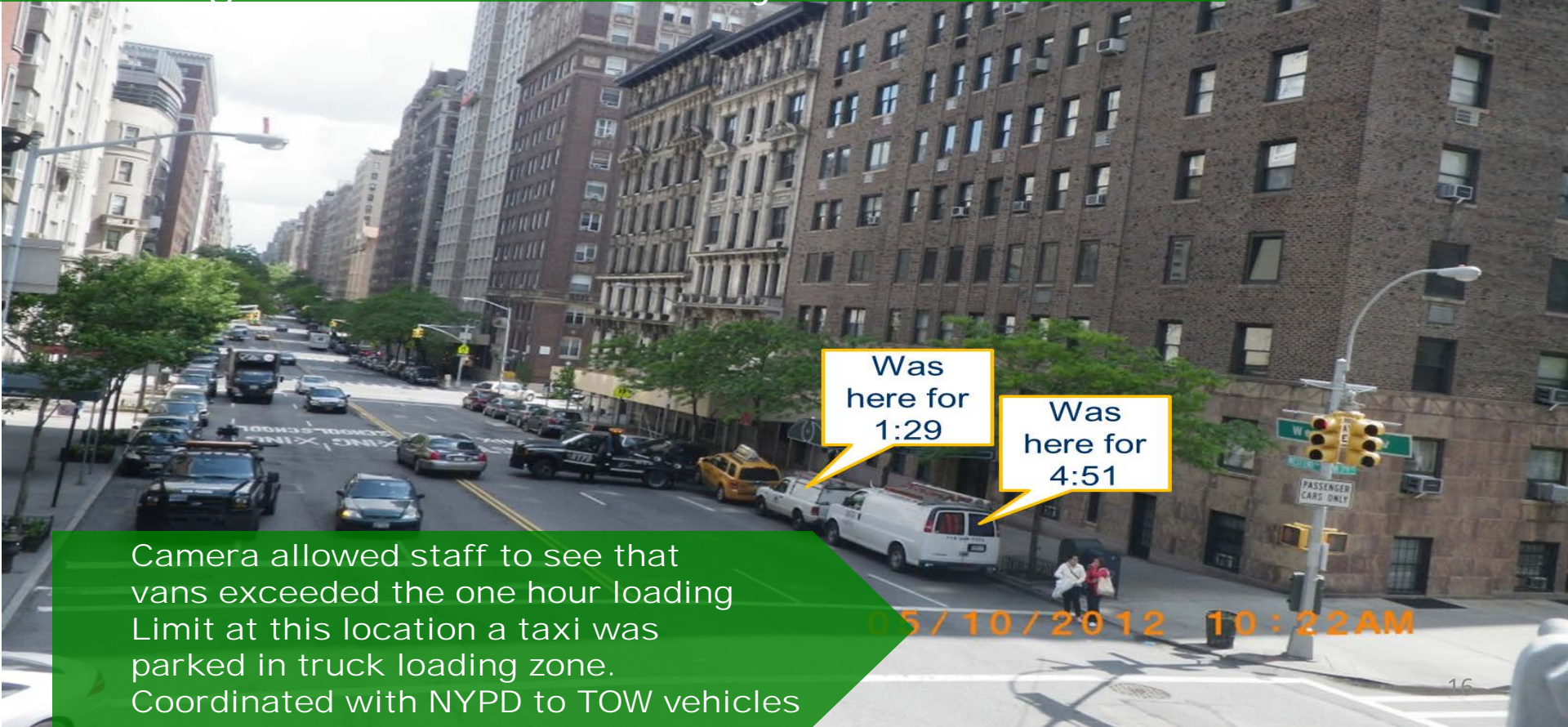
Map of Delivery Window Locations

40 parking spaces dedicated to truck deliveries Mon - Fri



CCTV Monitoring Pilot

Manage curb access, identify violations



Was here for 1:29

Was here for 4:51

Camera allowed staff to see that vans exceeded the one hour loading Limit at this location a taxi was parked in truck loading zone. Coordinated with NYPD to TOW vehicles

CCTV Mobile Units

Units will be used for truckers outreach and to monitor truck route compliance citywide for Local Law 057



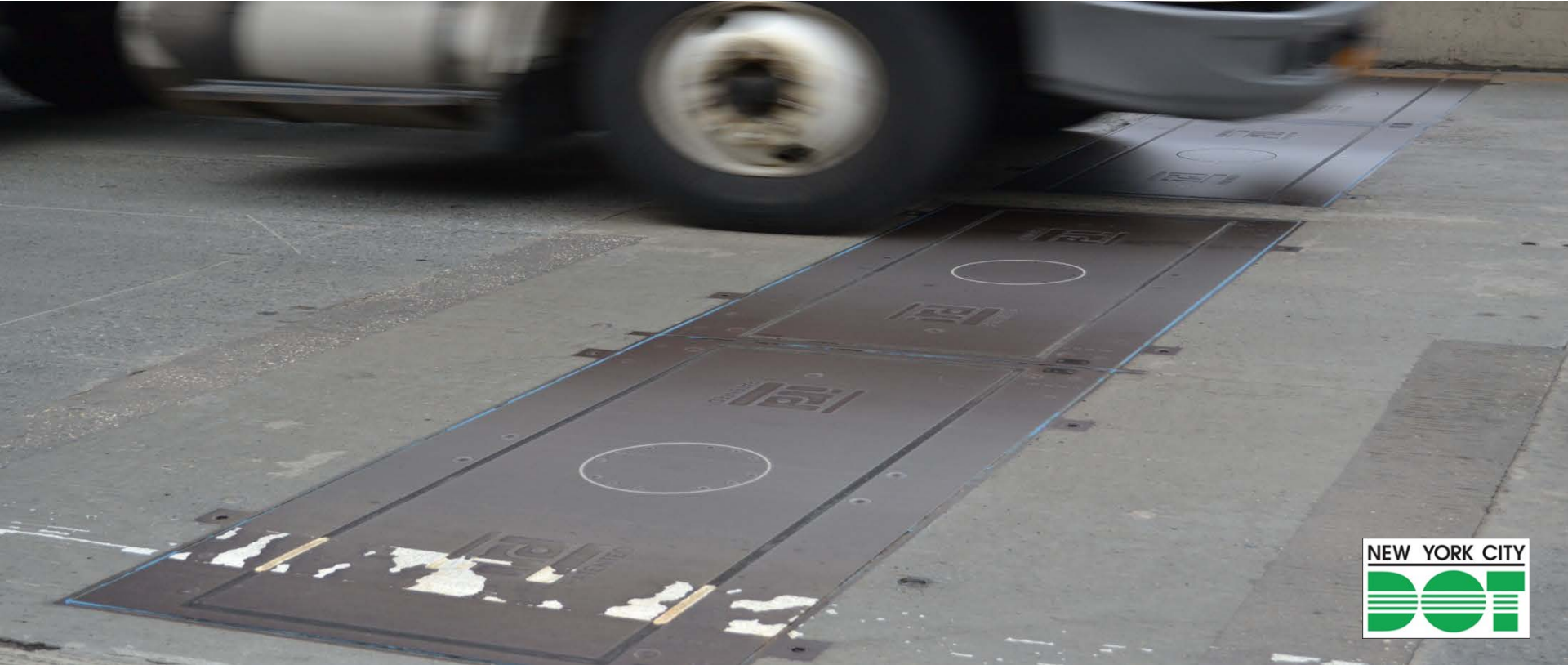
Safety & Operations

Truck Weigh-in-Motion (WIM)



WIM Truck Monitoring

Alexander Hamilton Bridge (MN/BX)



Day Time Hours

Four Points by Sheraton 326 W. 40th St.
Between 8th and 9th Avenues Manhattan



NYC DOT

Off Hours

Four Points by Sheraton 326 W. 40th St.
Between 8th and 9th Avenues Manhattan



Off Hour Deliveries

- When expanded more broadly, off hour deliveries will result in less truck interactions with pedestrian and cyclists
- There are 9,178 restaurants and drinking places in Manhattan, they generate more truck traffic than the Port Authority of New York and New Jersey
- NYC has adopted off-hour deliveries as part of its sustainability strategy.

Partners: Rensselaer Polytechnic Institute, NYSDOT NYSERDA, NYC DEP



NYC Truck Route Map



**Truck
NYC**

[www.
trucknyc.info](http://www.trucknyc.info)

Truck Routes, Land Use & Freight Conflicts



Large Trucks on Local Streets



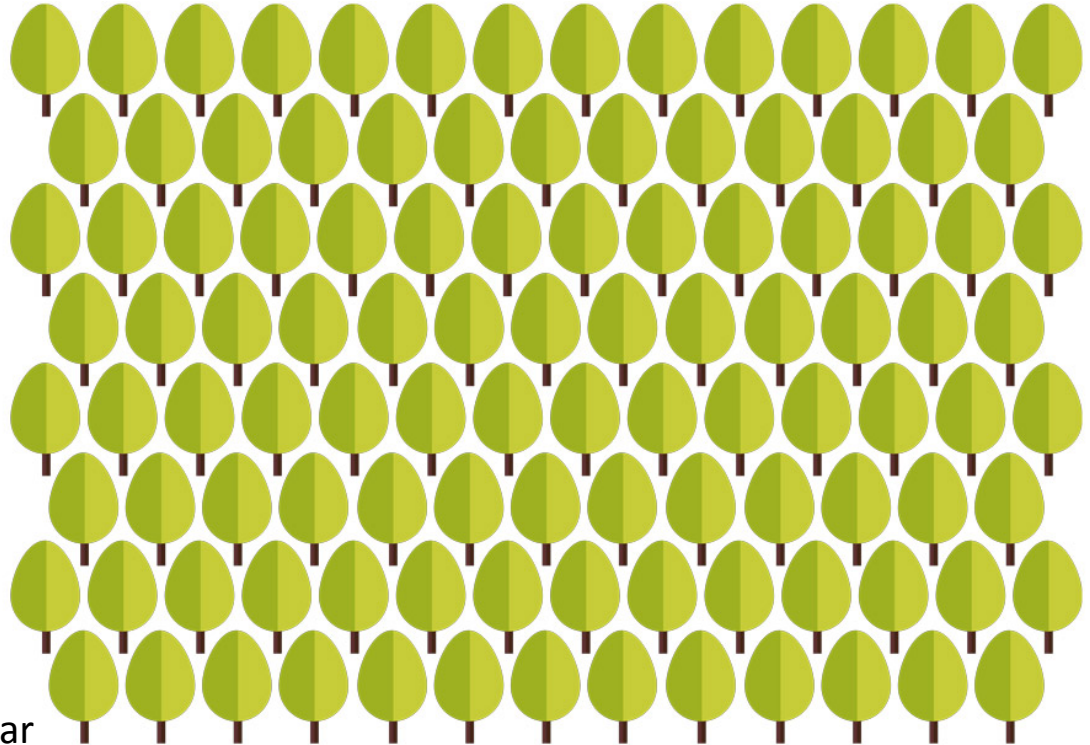
Greening Fleets

NYC DOT Alternative Fuels

Reducing CO2 Emissions



Replacing 500
Dirty Trucks with
Clean Trucks

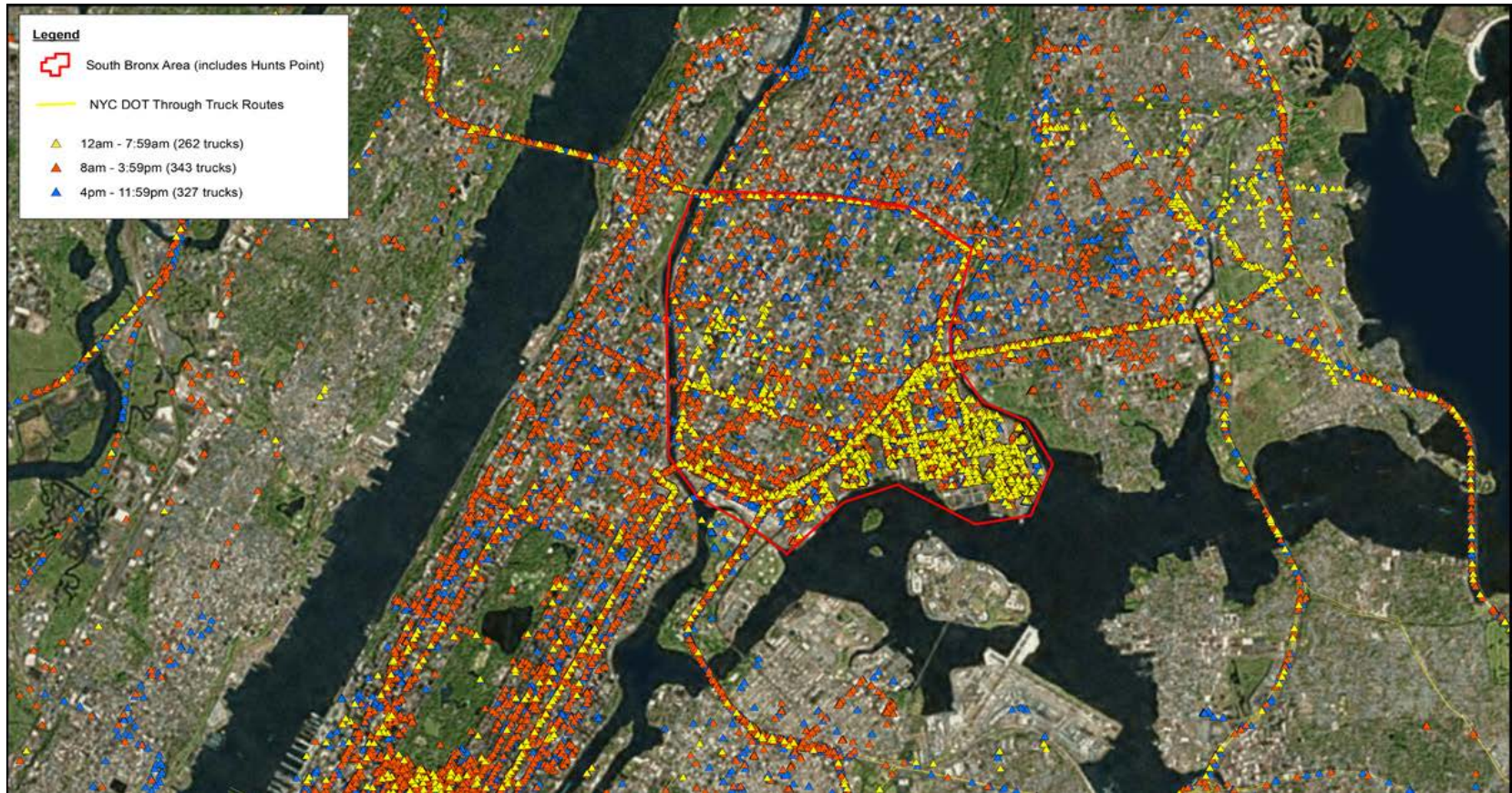


CO2 reduced by 4643.4 short tons/year

Planting 108,000 Trees

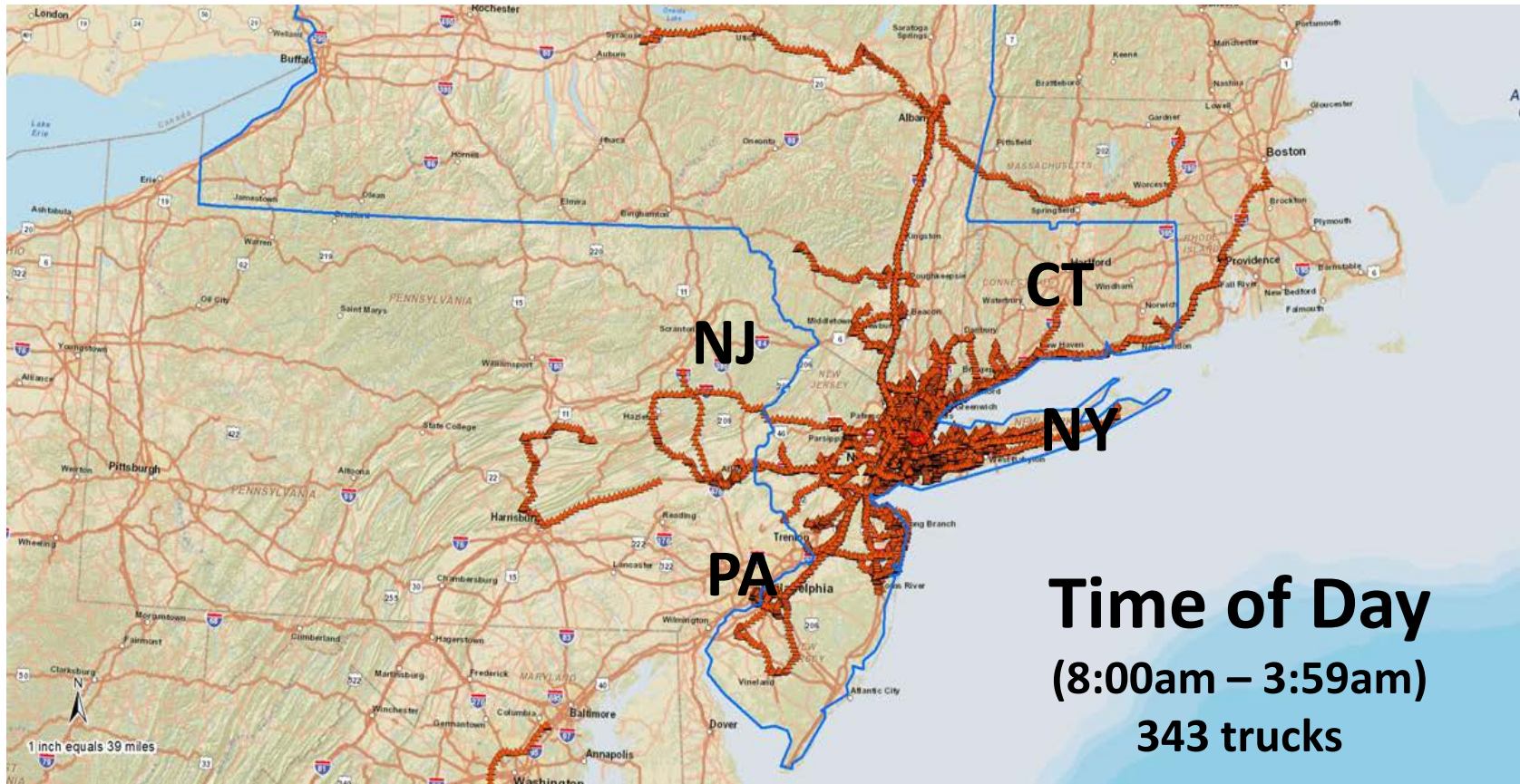
Greening Fleets

NYC DOT Alternative Fuels



Greening Fleets

NYC DOT Alternative Fuels



Time of Day
(8:00am – 3:59am)
343 trucks

Greening Fleets

NYC DOT Alternative Fuels

Tetra Tech provided:

- Program design and implementation support;
- Acted as direct interface with applicants;
- Issued the financial rebates;
- Assists DOT in responding to enforcement and compliance issues.



**Winter 2015 FHWA Peter Osborne Congratulates
NYCDOT and Key Program Participants**



Greening Fleets

NYC DOT Alternative Fuels

- Commitment is 5 years;
- **Prove 70% VMT in tri-state area;** Prove 2x average trips per week using clean truck in the South Bronx.
- Outreach and qualifying truck engine destruction inspection was done by subs Gladstein, Neandross and Assoc. and ISR (DBE contract component) , respectively.



Thank
You

To Contact us:

Office of Freight Mobility

Stacey D. Hodge
shodge@dot.nyc.gov
212-839-6670

nyc.gov/trucks
trucknyc.info

Truck Permits Unit

(212) 839-6341
Over dimensional
Truck Permits

Alternative Fuels Program

Mark Simon
msimon@dot.nyc.gov

