



U. S. Department of Transportation

Federal Highway Administration

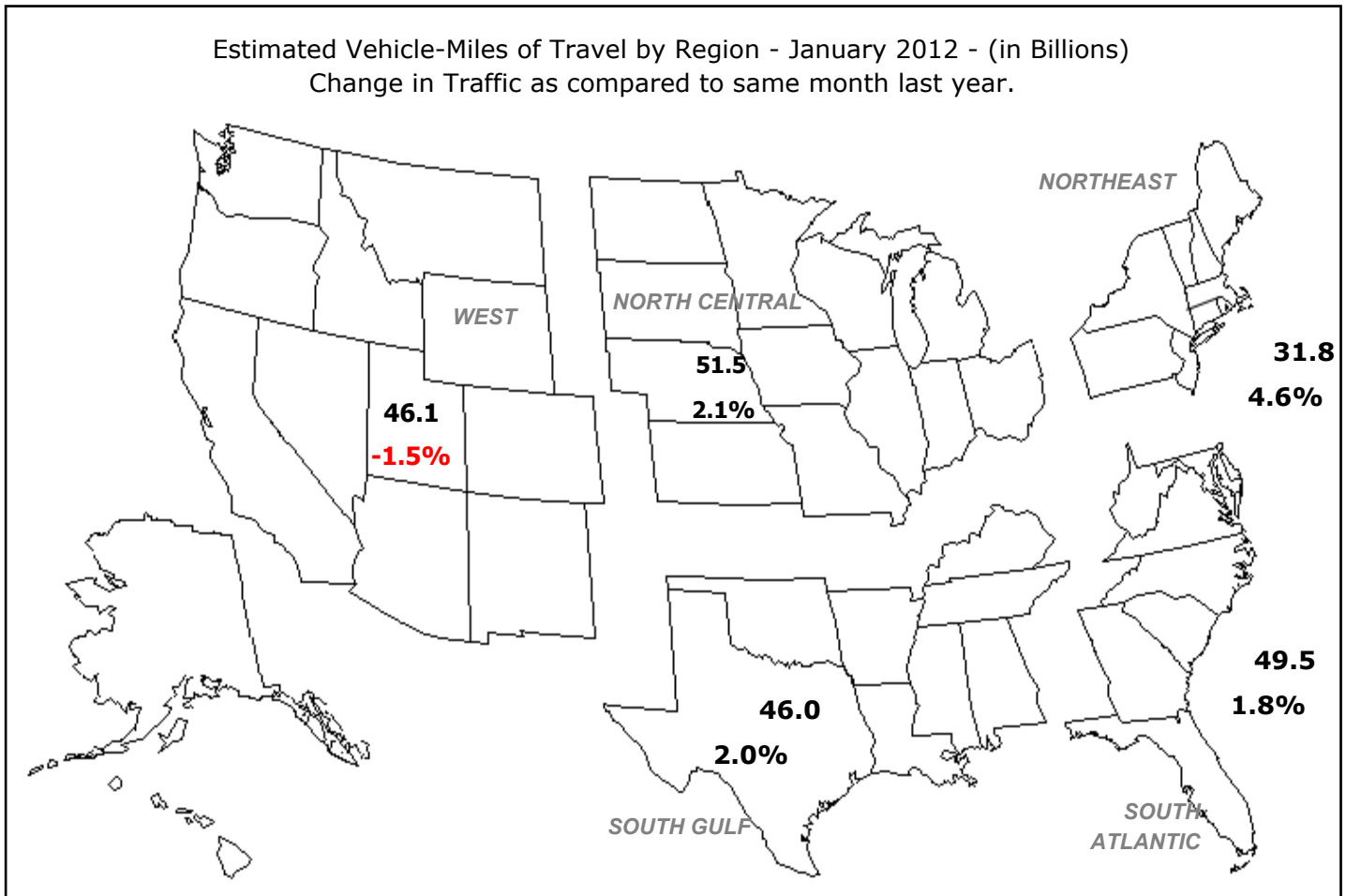
Office of Highway Policy Information

# TRAFFIC VOLUME TRENDS

## January 2012

Travel on all roads and streets changed by **+1.6%** (3.5 billion vehicle miles) for January 2012 as compared with January 2011. Travel for the month is estimated to be 224.8 billion vehicle miles.

Cumulative Travel for 2012 changed by **+1.6%** (3.5 billion vehicle miles). The Cumulative estimate for the year is 224.8 billion vehicle miles of travel.



Note: All data for this month are preliminary. Revised values for the previous month are shown in Tables 1 and 2

All vehicle-miles of travel computed with 2010 Table VM-2 as a base.

Compiled with data on hand as of March 20, 2012.

Some historical data were revised based on HPMS and amended TVT data as of December 2009.

For information on total licensed drivers in the U.S. visit <http://www.fhwa.dot.gov/policy/ohpi/hss/hsspubs.htm>.

Select the year of interest then Section III (Driver Licensing).

For information on total registered motor vehicles in the U.S., visit <http://www.fhwa.dot.gov/policy/ohpi/hss/hsspubs.htm>

Select the year of interest and Section II (Motor Vehicles).

Based on preliminary reports from the State Highway Agencies, travel during January 2012 on all roads and streets in the nation changed by **+1.6** percent (3.5 billion vehicle miles) resulting in estimated travel for the month at **224.8\*\*** billion vehicle-miles.

This total includes **71.2** billion vehicle-miles on rural roads and **153.6** billion vehicle-miles on urban roads and streets.

Cumulative Travel changed by **+1.6** percent (3.5 billion vehicle miles).

The larger changes to rural and urban travel are primarily because of the expansion in urban boundaries reflected in the 2000 census. Travel estimates for 2004 and beyond will also reflect this adjustment.

Travel for the current month, the cumulative yearly total, as well as the moving 12-month total on all roads and streets is shown below. Similar totals for each year since 1987 are also included.

Travel in Millions of Vehicle Miles

All Roads and Streets

| Year | January | Year to Date | Moving 12-Month |
|------|---------|--------------|-----------------|
| 1987 | 139,918 | 139,918      | 1,845,160       |
| 1988 | 148,879 | 148,879      | 1,933,289       |
| 1989 | 159,750 | 159,750      | 2,036,457       |
| 1990 | 163,600 | 163,600      | 2,110,889       |
| 1991 | 157,889 | 157,889      | 2,141,790       |
| 1992 | 167,652 | 167,652      | 2,181,977       |
| 1993 | 171,680 | 171,680      | 2,251,180       |
| 1994 | 169,314 | 169,314      | 2,294,338       |
| 1995 | 193,838 | 193,838      | 2,382,111       |
| 1996 | 183,465 | 183,465      | 2,412,403       |
| 1997 | 190,126 | 190,126      | 2,488,862       |
| 1998 | 196,870 | 196,870      | 2,567,117       |
| 1999 | 193,581 | 193,581      | 2,622,074       |
| 2000 | 203,442 | 203,442      | 2,689,319       |
| 2001 | 209,685 | 209,685      | 2,753,170       |
| 2002 | 215,215 | 215,215      | 2,801,140       |
| 2003 | 218,534 | 218,534      | 2,858,829       |
| 2004 | 222,450 | 222,450      | 2,894,137       |
| 2005 | 224,072 | 224,072      | 2,966,412       |
| 2006 | 233,302 | 233,302      | 2,998,660       |
| 2007 | 233,799 | 233,799      | 3,014,868       |
| 2008 | 233,469 | 233,469      | 3,030,794       |
| 2009 | 224,840 | 224,840      | 2,967,899       |
| 2010 | 220,140 | 220,140      | 2,952,062       |
| 2011 | 221,313 | 221,313      | 2,967,659       |
| 2012 | 224,798 | 224,798      | 2,934,113       |

Traffic Volume Trends is a monthly report based on hourly traffic count data. These data, collected at approximately 4,000 continuous traffic counting locations nationwide, are used to determine the percent change in traffic for the current month compared to the same month in the previous year. This percent change is applied to the travel for the same month of the previous year to obtain an estimate of travel for the current month. Because of the limited sample sizes, caution should be used with these estimates. The Highway Performance Monitoring System provides more accurate information on an annual basis.

\*\* System entries may not add to give "All Systems" total due to rounding for Page 2 to 8.

**Table - 1. Estimated Individual Monthly Motor Vehicle Travel in the United States\*\***

| System  | Month |       |       |       |       |       |       |       |       |       |       |       |
|---|-------|-------|-------|-------|-------|-------|-------|-------|-------|-------|-------|-------|
|   | JAN   | FEB   | MAR   | APR   | MAY   | JUN   | JUL   | AUG   | SEP   | OCT   | NOV   | DEC   |
| 2011 Individual Monthly Vehicle-Miles of Travel in Billions |       |       |       |       |       |       |       |       |       |       |       |       |
| Rural Interstate  | 17.5  | 16.5  | 19.8  | 20.4  | 21.1  | 21.3  | 23.2  | 22.3  | 20.0  | 20.6  | 19.6  | 19.8  |
| Rural Other Arterial  | 26.7  | 25.9  | 30.5  | 30.5  | 32.0  | 33.0  | 35.1  | 34.1  | 31.5  | 32.4  | 29.8  | 29.6  |
| Other Rural   | 26.1  | 24.9  | 30.0  | 30.1  | 31.2  | 32.0  | 32.8  | 32.1  | 29.6  | 30.9  | 27.8  | 27.8  |
| Urban Interstate  | 36.0  | 34.5  | 40.5  | 40.1  | 41.2  | 42.3  | 40.2  | 41.3  | 39.4  | 40.3  | 39.4  | 40.1  |
| Urban Other Arterial  | 80.5  | 77.2  | 89.9  | 88.6  | 88.6  | 89.4  | 89.2  | 91.1  | 84.3  | 89.4  | 84.6  | 87.7  |
| Other Urban   | 34.4  | 33.2  | 38.4  | 38.6  | 38.7  | 38.5  | 38.6  | 38.4  | 35.9  | 37.1  | 36.0  | 38.6  |
| All Systems   | 221.3 | 212.2 | 249.1 | 248.2 | 252.7 | 256.5 | 259.1 | 259.4 | 240.7 | 250.7 | 237.2 | 243.6 |
| 2012 Individual Monthly Vehicle-Miles of Travel in Billions |       |       |       |       |       |       |       |       |       |       |       |       |
| Rural Interstate  | 17.6  |       |       |       |       |       |       |       |       |       |       |       |
| Rural Other Arterial  | 27.2  |       |       |       |       |       |       |       |       |       |       |       |
| Other Rural   | 26.5  |       |       |       |       |       |       |       |       |       |       |       |
| Urban Interstate  | 36.8  |       |       |       |       |       |       |       |       |       |       |       |
| Urban Other Arterial  | 81.7  |       |       |       |       |       |       |       |       |       |       |       |
| Other Urban   | 35.0  |       |       |       |       |       |       |       |       |       |       |       |
| All Systems   | 224.8 |       |       |       |       |       |       |       |       |       |       |       |
| * Percent Change In Individual Monthly Travel 2011 vs. 2012 |       |       |       |       |       |       |       |       |       |       |       |       |
| Rural Interstate  | 0.7   |       |       |       |       |       |       |       |       |       |       |       |
| Rural Other Arterial  | 1.6   |       |       |       |       |       |       |       |       |       |       |       |
| Other Rural   | 1.3   |       |       |       |       |       |       |       |       |       |       |       |
| Urban Interstate  | 2.2   |       |       |       |       |       |       |       |       |       |       |       |
| Urban Other Arterial  | 1.5   |       |       |       |       |       |       |       |       |       |       |       |
| Other Urban   | 1.7   |       |       |       |       |       |       |       |       |       |       |       |
| All Systems   | 1.6   |       |       |       |       |       |       |       |       |       |       |       |

**Table - 2. Estimated Cumulative Monthly Motor Vehicle Travel in the United States\*\***

| System  | Month |       |       |       |        |        |        |        |        |        |        |        |
|---|-------|-------|-------|-------|--------|--------|--------|--------|--------|--------|--------|--------|
|   | JAN   | FEB   | MAR   | APR   | MAY    | JUN    | JUL    | AUG    | SEP    | OCT    | NOV    | DEC    |
| 2011 Cumulative Monthly Vehicle-Miles of Travel in Billions |       |       |       |       |        |        |        |        |        |        |        |        |
| Rural Interstate  | 17.5  | 34.0  | 53.8  | 74.2  | 95.3   | 116.6  | 139.8  | 162.1  | 182.1  | 202.7  | 222.3  | 242.1  |
| Rural Other Arterial  | 26.7  | 52.7  | 83.2  | 113.7 | 145.7  | 178.7  | 213.8  | 247.9  | 279.4  | 311.8  | 341.6  | 371.2  |
| Other Rural   | 26.1  | 51.0  | 81.0  | 111.1 | 142.3  | 174.3  | 207.1  | 239.3  | 268.9  | 299.7  | 327.6  | 355.4  |
| Urban Interstate  | 36.0  | 70.5  | 111.0 | 151.0 | 192.3  | 234.6  | 274.8  | 316.1  | 355.4  | 395.8  | 435.1  | 475.2  |
| Urban Other Arterial  | 80.5  | 157.7 | 247.6 | 336.2 | 424.8  | 514.2  | 603.4  | 694.5  | 778.8  | 868.1  | 952.7  | 1040.5 |
| Other Urban   | 34.4  | 67.6  | 106.0 | 144.6 | 183.2  | 221.7  | 260.3  | 298.7  | 334.6  | 371.7  | 407.7  | 446.3  |
| All Systems   | 221.3 | 433.5 | 682.6 | 930.8 | 1183.6 | 1440.1 | 1699.2 | 1958.5 | 2199.2 | 2449.8 | 2687.0 | 2930.6 |
| 2012 Cumulative Monthly Vehicle-Miles of Travel in Billions |       |       |       |       |        |        |        |        |        |        |        |        |
| Rural Interstate  | 17.6  |       |       |       |        |        |        |        |        |        |        |        |
| Rural Other Arterial  | 27.2  |       |       |       |        |        |        |        |        |        |        |        |
| Other Rural   | 26.5  |       |       |       |        |        |        |        |        |        |        |        |
| Urban Interstate  | 36.8  |       |       |       |        |        |        |        |        |        |        |        |
| Urban Other Arterial  | 81.7  |       |       |       |        |        |        |        |        |        |        |        |
| Other Urban   | 35.0  |       |       |       |        |        |        |        |        |        |        |        |
| All Systems   | 224.8 |       |       |       |        |        |        |        |        |        |        |        |
| * Percent Change In Cumulative Monthly Travel 2011 vs. 2012 |       |       |       |       |        |        |        |        |        |        |        |        |
| Rural Interstate  | 0.7   |       |       |       |        |        |        |        |        |        |        |        |
| Rural Other Arterial  | 1.6   |       |       |       |        |        |        |        |        |        |        |        |
| Other Rural   | 1.3   |       |       |       |        |        |        |        |        |        |        |        |
| Urban Interstate  | 2.2   |       |       |       |        |        |        |        |        |        |        |        |
| Urban Other Arterial  | 1.5   |       |       |       |        |        |        |        |        |        |        |        |
| Other Urban   | 1.7   |       |       |       |        |        |        |        |        |        |        |        |
| All Systems   | 1.6   |       |       |       |        |        |        |        |        |        |        |        |

\*Percent change is based on vehicle travel in millions of miles.

Table - 3. Changes on Rural Arterial Roads by Region and State\*\*

| Region and State      | January            |                          |               |                | December           |                          |               |                |
|-----------------------|--------------------|--------------------------|---------------|----------------|--------------------|--------------------------|---------------|----------------|
|                       | Number of Stations | Vehicle-Miles (Millions) |               | Percent Change | Number of Stations | Vehicle-Miles (Millions) |               | Percent Change |
|                       |                    | 2012 (Preliminary)       | 2011          |                |                    | 2011 (Revised)           | 2010          |                |
| <b>Northeast</b>      |                    |                          |               |                |                    |                          |               |                |
| Connecticut           | 6                  | 143                      | 136           | 4.8            | 5                  | 154                      | 151           | 2.4            |
| Maine                 | 69                 | 417                      | 419           | -0.4           | 71                 | 446                      | 443           | 0.8            |
| Massachusetts         | 13                 | 179                      | 173           | 3.8            | 10                 | 237                      | 232           | 1.9            |
| New Hampshire         | 30                 | 247                      | 244           | 1.2            | 28                 | 270                      | 270           | 0.1            |
| New Jersey            | 22                 | 292                      | 275           | 6.2            | 21                 | 342                      | 338           | 1.4            |
| New York              | 51                 | 981                      | 976           | 0.4            | 50                 | 1,222                    | 1,191         | 2.7            |
| Pennsylvania          | 37                 | 1,567                    | 1,502         | 4.3            | 34                 | 1,883                    | 1,803         | 4.5            |
| Rhode Island          | -                  | 28                       | 27            | 6.5            | -                  | 49                       | 48            | 0.8            |
| Vermont               | 35                 | 219                      | 220           | -0.1           | 35                 | 225                      | 223           | 0.7            |
| Subtotal              |                    | <b>4,073</b>             | <b>3,972</b>  | <b>2.5</b>     |                    | <b>4,828</b>             | <b>4,699</b>  | <b>2.7</b>     |
| <b>South Atlantic</b> |                    |                          |               |                |                    |                          |               |                |
| Delaware              | 24                 | 97                       | 92            | 5.2            | 24                 | 102                      | 97            | 5.3            |
| District of Columbia  | -                  | 0                        | 0             | 0.0            | -                  | 0                        | 0             | 0.0            |
| Florida               | 108                | 1,907                    | 1,912         | -0.3           | 105                | 1,920                    | 1,931         | -0.6           |
| Georgia               | 70                 | 1,795                    | 1,795         | 0.0            | 62                 | 1,810                    | 1,860         | -2.7           |
| Maryland              | 24                 | 628                      | 611           | 2.8            | 25                 | 728                      | 711           | 2.4            |
| North Carolina        | 15                 | 1,455                    | 1,411         | 3.1            | 15                 | 1,570                    | 1,481         | 6.0            |
| South Carolina        | 72                 | 1,192                    | 1,148         | 3.8            | 70                 | 1,239                    | 1,215         | 1.9            |
| Virginia              | 262                | 1,529                    | 1,481         | 3.2            | 260                | 1,698                    | 1,617         | 5.0            |
| West Virginia         | -                  | 479                      | 463           | 3.4            | -                  | 556                      | 530           | 4.9            |
| Subtotal              |                    | <b>9,082</b>             | <b>8,913</b>  | <b>1.9</b>     |                    | <b>9,623</b>             | <b>9,442</b>  | <b>1.9</b>     |
| <b>North Central</b>  |                    |                          |               |                |                    |                          |               |                |
| Illinois              | 5                  | 1,157                    | 1,187         | -2.5           | 9                  | 1,351                    | 1,374         | -1.6           |
| Indiana               | 30                 | 1,259                    | 1,244         | 1.2            | 30                 | 1,172                    | 1,140         | 2.8            |
| Iowa                  | 86                 | 927                      | 902           | 2.8            | 87                 | 1,027                    | 987           | 4.1            |
| Kansas                | 62                 | 737                      | 685           | 7.5            | 60                 | 816                      | 811           | 0.7            |
| Michigan              | 61                 | 1,473                    | 1,483         | -0.7           | 61                 | 1,602                    | 1,574         | 1.8            |
| Minnesota             | 38                 | 1,149                    | 1,132         | 1.5            | 39                 | 1,301                    | 1,232         | 5.6            |
| Missouri              | 80                 | 1,118                    | 1,086         | 3.0            | 80                 | 1,405                    | 1,408         | -0.2           |
| Nebraska              | 36                 | 559                      | 518           | 8.1            | 36                 | 644                      | 625           | 3.0            |
| North Dakota          | 24                 | 317                      | 285           | 11.3           | 28                 | 352                      | 319           | 10.2           |
| Ohio                  | 45                 | 1,448                    | 1,412         | 2.6            | 44                 | 1,651                    | 1,587         | 4.0            |
| South Dakota          | 29                 | 309                      | 297           | 4.1            | 30                 | 367                      | 357           | 2.5            |
| Wisconsin             | 77                 | 1,252                    | 1,248         | 0.3            | 83                 | 1,530                    | 1,482         | 3.3            |
| Subtotal              |                    | <b>11,705</b>            | <b>11,479</b> | <b>2.0</b>     |                    | <b>13,218</b>            | <b>12,896</b> | <b>2.5</b>     |
| <b>South Gulf</b>     |                    |                          |               |                |                    |                          |               |                |
| Alabama               | -                  | 1,224                    | 1,235         | -0.9           | 2                  | 1,282                    | 1,303         | -1.6           |
| Arkansas              | 29                 | 895                      | 896           | -0.1           | 12                 | 999                      | 1,018         | -1.8           |
| Kentucky              | 32                 | 1,257                    | 1,210         | 3.9            | 28                 | 1,398                    | 1,303         | 7.3            |
| Louisiana             | -                  | 796                      | 810           | -1.8           | 5                  | 755                      | 797           | -5.2           |
| Mississippi           | -                  | 1,158                    | 1,107         | 4.6            | 38                 | 930                      | 936           | -0.6           |
| Oklahoma              | -                  | 895                      | 877           | 2.1            | -                  | 917                      | 927           | -1.1           |
| Tennessee             | 6                  | 1,524                    | 1,430         | 6.6            | 8                  | 1,498                    | 1,497         | 0.1            |
| Texas                 | 111                | 3,854                    | 3,784         | 1.9            | 109                | 3,786                    | 3,839         | -1.4           |
| Subtotal              |                    | <b>11,603</b>            | <b>11,349</b> | <b>2.2</b>     |                    | <b>11,565</b>            | <b>11,620</b> | <b>-0.5</b>    |
| <b>West</b>           |                    |                          |               |                |                    |                          |               |                |
| Alaska                | 32                 | 73                       | 79            | -6.9           | 33                 | 79                       | 82            | -3.2           |
| Arizona               | 58                 | 970                      | 990           | -2.0           | 21                 | 1,010                    | 1,032         | -2.1           |
| California            | 45                 | 2,726                    | 2,784         | -2.1           | 38                 | 4,028                    | 3,966         | 1.6            |
| Colorado              | 75                 | 785                      | 782           | 0.5            | 75                 | 807                      | 830           | -2.8           |
| Hawaii                | 7                  | 90                       | 88            | 2.3            | 8                  | 90                       | 91            | -1.0           |
| Idaho                 | 90                 | 347                      | 350           | -0.9           | 87                 | 377                      | 369           | 2.0            |
| Montana               | 52                 | 341                      | 337           | 1.4            | 53                 | 451                      | 428           | 5.3            |
| Nevada                | 34                 | 257                      | 263           | -2.0           | 32                 | 316                      | 308           | 2.6            |
| New Mexico            | 51                 | 710                      | 718           | -1.1           | 23                 | 683                      | 749           | -8.8           |
| Oregon                | 99                 | 664                      | 697           | -4.8           | 96                 | 793                      | 796           | -0.3           |
| Utah                  | 44                 | 394                      | 405           | -2.6           | 44                 | 428                      | 418           | 2.4            |
| Washington            | 3                  | 634                      | 701           | -9.6           | 3                  | 779                      | 759           | 2.6            |
| Wyoming               | -                  | 307                      | 302           | 1.6            | 14                 | 348                      | 329           | 5.8            |
| Subtotal              |                    | <b>8,298</b>             | <b>8,496</b>  | <b>-2.3</b>    |                    | <b>10,189</b>            | <b>10,157</b> | <b>0.3</b>     |
| <b>TOTALS</b>         | <b>2,179</b>       | <b>44,761</b>            | <b>44,209</b> | <b>1.2</b>     | <b>2,131</b>       | <b>49,423</b>            | <b>48,814</b> | <b>1.2</b>     |

Note: Where Number of Stations are shown as dashes, the values for the Vehicle-Miles and Percent Change are derived from the estimated VMT based on data from surrounding States or the nationwide average VMT.

Table - 4. Changes on Urban Arterial Roads by Region and State\*\*

| Region and State      | January            |                          |                |                | December           |                          |                |                |
|-----------------------|--------------------|--------------------------|----------------|----------------|--------------------|--------------------------|----------------|----------------|
|                       | Number of Stations | Vehicle-Miles (Millions) |                | Percent Change | Number of Stations | Vehicle-Miles (Millions) |                | Percent Change |
|                       |                    | 2012 (Preliminary)       | 2011           |                |                    | 2011 (Revised)           | 2010           |                |
| <b>Northeast</b>      |                    |                          |                |                |                    |                          |                |                |
| Connecticut           | 25                 | 1,694                    | 1,572          | 7.7            | 25                 | 1,888                    | 1,822          | 3.7            |
| Maine                 | 13                 | 215                      | 208            | 3.2            | 11                 | 221                      | 214            | 3.4            |
| Massachusetts         | 46                 | 3,208                    | 3,013          | 6.5            | 44                 | 3,394                    | 3,345          | 1.5            |
| New Hampshire         | 26                 | 446                      | 434            | 2.8            | 24                 | 483                      | 483            | 0.0            |
| New Jersey            | 61                 | 3,651                    | 3,422          | 6.7            | 73                 | 4,619                    | 4,549          | 1.5            |
| New York              | 74                 | 5,741                    | 5,524          | 3.9            | 73                 | 6,523                    | 6,312          | 3.3            |
| Pennsylvania          | 21                 | 3,666                    | 3,484          | 5.2            | 20                 | 4,162                    | 4,058          | 2.6            |
| Rhode Island          | 43                 | 347                      | 326            | 6.5            | 42                 | 480                      | 476            | 0.8            |
| Vermont               | 17                 | 98                       | 96             | 2.4            | 15                 | 100                      | 97             | 2.7            |
| Subtotal              |                    | <b>19,066</b>            | <b>18,079</b>  | <b>5.5</b>     |                    | <b>21,870</b>            | <b>21,356</b>  | <b>2.4</b>     |
| <b>South Atlantic</b> |                    |                          |                |                |                    |                          |                |                |
| Delaware              | 15                 | 332                      | 313            | 6.0            | 16                 | 371                      | 353            | 5.2            |
| District of Columbia  | -                  | 269                      | 263            | 2.3            | -                  | 213                      | 208            | 2.6            |
| Florida               | 140                | 8,748                    | 8,681          | 0.8            | 138                | 8,541                    | 8,522          | 0.2            |
| Georgia               | 107                | 3,855                    | 3,869          | -0.4           | 99                 | 4,313                    | 4,366          | -1.2           |
| Maryland              | 40                 | 2,728                    | 2,617          | 4.2            | 39                 | 2,832                    | 2,769          | 2.3            |
| North Carolina        | 22                 | 3,507                    | 3,377          | 3.8            | 22                 | 3,472                    | 3,341          | 3.9            |
| South Carolina        | 40                 | 1,602                    | 1,531          | 4.6            | 40                 | 1,571                    | 1,559          | 0.8            |
| Virginia              | 317                | 3,269                    | 3,233          | 1.1            | 306                | 3,471                    | 3,366          | 3.1            |
| West Virginia         | -                  | 519                      | 504            | 3.0            | -                  | 598                      | 580            | 3.1            |
| Subtotal              |                    | <b>24,829</b>            | <b>24,388</b>  | <b>1.8</b>     |                    | <b>25,382</b>            | <b>25,064</b>  | <b>1.3</b>     |
| <b>North Central</b>  |                    |                          |                |                |                    |                          |                |                |
| Illinois              | 18                 | 4,452                    | 4,419          | 0.7            | 28                 | 4,919                    | 4,833          | 1.8            |
| Indiana               | 23                 | 2,590                    | 2,508          | 3.3            | 25                 | 2,733                    | 2,620          | 4.3            |
| Iowa                  | 38                 | 714                      | 710            | 0.7            | 37                 | 751                      | 739            | 1.6            |
| Kansas                | 16                 | 930                      | 891            | 4.4            | 18                 | 1,065                    | 1,089          | -2.2           |
| Michigan              | 53                 | 4,751                    | 4,654          | 2.1            | 53                 | 4,508                    | 4,378          | 3.0            |
| Minnesota             | 27                 | 1,943                    | 1,880          | 3.3            | 27                 | 2,101                    | 1,958          | 7.3            |
| Missouri              | 60                 | 2,296                    | 2,231          | 2.9            | 60                 | 2,394                    | 2,413          | -0.8           |
| Nebraska              | 13                 | 526                      | 501            | 4.9            | 13                 | 538                      | 538            | -0.1           |
| North Dakota          | 8                  | 137                      | 128            | 6.5            | 8                  | 146                      | 145            | 0.4            |
| Ohio                  | 82                 | 4,209                    | 4,131          | 1.9            | 79                 | 4,509                    | 4,343          | 3.8            |
| South Dakota          | 8                  | 147                      | 143            | 2.5            | 9                  | 175                      | 172            | 2.0            |
| Wisconsin             | 62                 | 1,956                    | 1,918          | 2.0            | 59                 | 1,850                    | 1,813          | 2.0            |
| Subtotal              |                    | <b>24,651</b>            | <b>24,114</b>  | <b>2.2</b>     |                    | <b>25,689</b>            | <b>25,041</b>  | <b>2.6</b>     |
| <b>South Gulf</b>     |                    |                          |                |                |                    |                          |                |                |
| Alabama               | -                  | 1,630                    | 1,621          | 0.6            | 1                  | 1,845                    | 1,885          | -2.1           |
| Arkansas              | 10                 | 1,080                    | 1,095          | -1.3           | -                  | 1,010                    | 1,028          | -1.7           |
| Kentucky              | 7                  | 1,290                    | 1,247          | 3.5            | 8                  | 1,424                    | 1,379          | 3.3            |
| Louisiana             | -                  | 1,785                    | 1,799          | -0.8           | 2                  | 1,582                    | 1,698          | -6.8           |
| Mississippi           | -                  | 1,050                    | 1,010          | 4.0            | 19                 | 878                      | 885            | -0.8           |
| Oklahoma              | -                  | 1,404                    | 1,393          | 0.8            | -                  | 1,548                    | 1,575          | -1.7           |
| Tennessee             | 7                  | 2,605                    | 2,443          | 6.6            | 7                  | 2,834                    | 2,770          | 2.3            |
| Texas                 | 88                 | 11,015                   | 10,881         | 1.2            | 89                 | 10,645                   | 10,802         | -1.5           |
| Subtotal              |                    | <b>21,859</b>            | <b>21,489</b>  | <b>1.7</b>     |                    | <b>21,766</b>            | <b>22,022</b>  | <b>-1.2</b>    |
| <b>West</b>           |                    |                          |                |                |                    |                          |                |                |
| Alaska                | 37                 | 122                      | 128            | -4.8           | 35                 | 145                      | 148            | -1.9           |
| Arizona               | 24                 | 2,750                    | 2,773          | -0.8           | 13                 | 2,952                    | 3,012          | -2.0           |
| California            | 36                 | 15,927                   | 16,094         | -1.0           | 29                 | 20,338                   | 20,042         | 1.5            |
| Colorado              | 25                 | 2,257                    | 2,206          | 2.3            | 25                 | 2,097                    | 2,170          | -3.4           |
| Hawaii                | 32                 | 416                      | 417            | -0.1           | 29                 | 436                      | 432            | 1.0            |
| Idaho                 | 66                 | 395                      | 394            | 0.2            | 59                 | 405                      | 392            | 3.4            |
| Montana               | 5                  | 108                      | 105            | 2.2            | 6                  | 133                      | 127            | 4.8            |
| Nevada                | 30                 | 961                      | 977            | -1.6           | 30                 | 1,108                    | 1,106          | 0.2            |
| New Mexico            | 31                 | 714                      | 726            | -1.6           | 18                 | 681                      | 725            | -6.0           |
| Oregon                | 28                 | 1,095                    | 1,122          | -2.3           | 39                 | 1,189                    | 1,192          | -0.3           |
| Utah                  | 39                 | 1,013                    | 1,010          | 0.3            | 40                 | 1,043                    | 1,030          | 1.2            |
| Washington            | 6                  | 2,228                    | 2,378          | -6.3           | 7                  | 2,448                    | 2,441          | 0.3            |
| Wyoming               | -                  | 127                      | 124            | 2.3            | 2                  | 126                      | 131            | -3.9           |
| Subtotal              |                    | <b>28,113</b>            | <b>28,454</b>  | <b>-1.2</b>    |                    | <b>33,101</b>            | <b>32,948</b>  | <b>0.5</b>     |
| <b>TOTALS</b>         | <b>1,886</b>       | <b>118,518</b>           | <b>116,524</b> | <b>1.7</b>     | <b>1,861</b>       | <b>127,808</b>           | <b>126,431</b> | <b>1.1</b>     |

Note: Where Number of Stations are shown as dashes, the values for the Vehicle-Miles and Percent Change are derived from the estimated VMT based on data from surrounding States or the nationwide average VMT.

Table - 5. Changes on ALL\* Estimated Roads by Region and State\*\*

| Region and State      | January            |                          |                |                | December           |                          |                |                |
|-----------------------|--------------------|--------------------------|----------------|----------------|--------------------|--------------------------|----------------|----------------|
|                       | Number of Stations | Vehicle-Miles (Millions) |                | Percent Change | Number of Stations | Vehicle-Miles (Millions) |                | Percent Change |
|                       |                    | 2012 (Preliminary)       | 2011           |                |                    | 2011 (Revised)           | 2010           |                |
| <b>Northeast</b>      |                    |                          |                |                |                    |                          |                |                |
| Connecticut           | 32                 | 2,361                    | 2,195          | 7.5            | 31                 | 2,627                    | 2,536          | 3.6            |
| Maine                 | 112                | 1,080                    | 1,072          | 0.7            | 112                | 1,149                    | 1,121          | 2.5            |
| Massachusetts         | 59                 | 4,304                    | 4,047          | 6.3            | 54                 | 4,646                    | 4,577          | 1.5            |
| New Hampshire         | 60                 | 960                      | 941            | 2.0            | 56                 | 1,052                    | 1,054          | -0.1           |
| New Jersey            | 88                 | 5,072                    | 4,761          | 6.5            | 99                 | 6,355                    | 6,259          | 1.5            |
| New York              | 138                | 9,861                    | 9,588          | 2.8            | 137                | 11,146                   | 10,819         | 3.0            |
| Pennsylvania          | 72                 | 7,060                    | 6,726          | 5.0            | 68                 | 9,444                    | 9,113          | 3.6            |
| Rhode Island          | 43                 | 443                      | 416            | 6.5            | 42                 | 641                      | 636            | 0.8            |
| Vermont               | 68                 | 641                      | 642            | -0.2           | 65                 | 542                      | 541            | 0.1            |
| Subtotal              |                    | <b>31,782</b>            | <b>30,388</b>  | <b>4.6</b>     |                    | <b>37,602</b>            | <b>36,656</b>  | <b>2.6</b>     |
| <b>South Atlantic</b> |                    |                          |                |                |                    |                          |                |                |
| Delaware              | 67                 | 643                      | 608            | 5.7            | 67                 | 685                      | 652            | 5.1            |
| District of Columbia  | -                  | 373                      | 365            | 2.3            | -                  | 302                      | 295            | 2.4            |
| Florida               | 256                | 16,308                   | 16,200         | 0.7            | 250                | 16,294                   | 16,262         | 0.2            |
| Georgia               | 214                | 8,562                    | 8,673          | -1.3           | 197                | 9,128                    | 9,342          | -2.3           |
| Maryland              | 66                 | 4,175                    | 4,010          | 4.1            | 66                 | 4,456                    | 4,355          | 2.3            |
| North Carolina        | 59                 | 8,018                    | 7,708          | 4.0            | 59                 | 8,193                    | 7,848          | 4.4            |
| South Carolina        | 119                | 3,802                    | 3,631          | 4.7            | 118                | 3,843                    | 3,805          | 1.0            |
| Virginia              | 592                | 6,206                    | 6,066          | 2.3            | 579                | 6,659                    | 6,426          | 3.6            |
| West Virginia         | -                  | 1,372                    | 1,327          | 3.4            | -                  | 1,575                    | 1,511          | 4.3            |
| Subtotal              |                    | <b>49,459</b>            | <b>48,588</b>  | <b>1.8</b>     |                    | <b>51,135</b>            | <b>50,496</b>  | <b>1.3</b>     |
| <b>North Central</b>  |                    |                          |                |                |                    |                          |                |                |
| Illinois              | 25                 | 7,505                    | 7,556          | -0.7           | 43                 | 8,256                    | 8,222          | 0.4            |
| Indiana               | 67                 | 6,266                    | 6,108          | 2.6            | 67                 | 6,433                    | 6,209          | 3.6            |
| Iowa                  | 150                | 2,238                    | 2,175          | 2.9            | 151                | 2,439                    | 2,358          | 3.4            |
| Kansas                | 87                 | 2,182                    | 2,063          | 5.8            | 87                 | 2,522                    | 2,560          | -1.5           |
| Michigan              | 116                | 8,062                    | 7,969          | 1.2            | 116                | 8,031                    | 7,859          | 2.2            |
| Minnesota             | 74                 | 4,251                    | 4,140          | 2.7            | 74                 | 4,667                    | 4,371          | 6.8            |
| Missouri              | 150                | 5,200                    | 5,053          | 2.9            | 150                | 5,756                    | 5,816          | -1.0           |
| Nebraska              | 57                 | 1,398                    | 1,305          | 7.1            | 58                 | 1,526                    | 1,505          | 1.4            |
| North Dakota          | 34                 | 631                      | 580            | 8.7            | 40                 | 681                      | 635            | 7.2            |
| Ohio                  | 141                | 8,835                    | 8,618          | 2.5            | 137                | 9,267                    | 8,845          | 4.8            |
| South Dakota          | 46                 | 578                      | 560            | 3.3            | 47                 | 695                      | 681            | 2.0            |
| Wisconsin             | 145                | 4,334                    | 4,308          | 0.6            | 148                | 4,544                    | 4,438          | 2.4            |
| Subtotal              |                    | <b>51,480</b>            | <b>50,435</b>  | <b>2.1</b>     |                    | <b>54,817</b>            | <b>53,499</b>  | <b>2.5</b>     |
| <b>South Gulf</b>     |                    |                          |                |                |                    |                          |                |                |
| Alabama               | -                  | 4,791                    | 4,819          | -0.6           | 3                  | 5,209                    | 5,310          | -1.9           |
| Arkansas              | 42                 | 2,733                    | 2,758          | -0.9           | 12                 | 2,787                    | 2,836          | -1.7           |
| Kentucky              | 48                 | 3,665                    | 3,531          | 3.8            | 44                 | 3,981                    | 3,766          | 5.7            |
| Louisiana             | -                  | 3,551                    | 3,587          | -1.0           | 10                 | 3,244                    | 3,467          | -6.4           |
| Mississippi           | -                  | 3,521                    | 3,390          | 3.9            | 62                 | 2,851                    | 2,899          | -1.7           |
| Oklahoma              | -                  | 3,470                    | 3,411          | 1.7            | -                  | 3,538                    | 3,592          | -1.5           |
| Tennessee             | 15                 | 5,565                    | 5,227          | 6.5            | 17                 | 5,819                    | 5,739          | 1.4            |
| Texas                 | 233                | 18,693                   | 18,373         | 1.7            | 232                | 17,997                   | 18,234         | -1.3           |
| Subtotal              |                    | <b>45,989</b>            | <b>45,096</b>  | <b>2.0</b>     |                    | <b>45,426</b>            | <b>45,843</b>  | <b>-0.9</b>    |
| <b>West</b>           |                    |                          |                |                |                    |                          |                |                |
| Alaska                | 73                 | 303                      | 319            | -5.2           | 72                 | 340                      | 346            | -1.8           |
| Arizona               | 98                 | 4,831                    | 4,907          | -1.6           | 35                 | 5,193                    | 5,289          | -1.8           |
| California            | 81                 | 22,090                   | 22,357         | -1.2           | 67                 | 29,063                   | 28,636         | 1.5            |
| Colorado              | 101                | 3,839                    | 3,777          | 1.6            | 101                | 3,688                    | 3,812          | -3.3           |
| Hawaii                | 39                 | 830                      | 828            | 0.3            | 37                 | 842                      | 836            | 0.7            |
| Idaho                 | 167                | 1,130                    | 1,132          | -0.1           | 153                | 1,173                    | 1,148          | 2.2            |
| Montana               | 68                 | 659                      | 647            | 1.8            | 69                 | 855                      | 815            | 5.0            |
| Nevada                | 74                 | 1,558                    | 1,586          | -1.7           | 73                 | 1,817                    | 1,806          | 0.6            |
| New Mexico            | 90                 | 2,090                    | 2,122          | -1.5           | 48                 | 1,940                    | 2,096          | -7.4           |
| Oregon                | 134                | 2,336                    | 2,416          | -3.3           | 142                | 2,599                    | 2,602          | -0.1           |
| Utah                  | 87                 | 2,000                    | 2,015          | -0.7           | 88                 | 2,075                    | 2,045          | 1.4            |
| Washington            | 9                  | 3,763                    | 4,047          | -7.0           | 10                 | 4,269                    | 4,232          | 0.9            |
| Wyoming               | -                  | 661                      | 650            | 1.7            | 16                 | 753                      | 729            | 3.2            |
| Subtotal              |                    | <b>46,090</b>            | <b>46,803</b>  | <b>-1.5</b>    |                    | <b>54,607</b>            | <b>54,392</b>  | <b>0.4</b>     |
| <b>TOTALS</b>         | <b>4,496</b>       | <b>224,798</b>           | <b>221,313</b> | <b>1.6</b>     | <b>4,409</b>       | <b>243,585</b>           | <b>240,888</b> | <b>1.1</b>     |

Note: Where Number of Stations are shown as dashes, the values for the Vehicle-Miles and Percent Change are derived from the estimated VMT based on data from surrounding States or the nationwide average VMT. \* All Estimated roads include travel from Table 3 and 4 plus remaining roads

Table - 6. Estimated Rural Vehicle Miles (Millions) and Percent Change from Same Period Previous Year\*\*

| Year - 2011 |                  |             |                      |                |             |             |                |             |             |                |             |             |                  |             |
|-------------|------------------|-------------|----------------------|----------------|-------------|-------------|----------------|-------------|-------------|----------------|-------------|-------------|------------------|-------------|
|             | Rural Interstate |             | Rural Other Arterial |                | Other Rural |             | Total Rural    |             | All Systems |                |             |             |                  |             |
|             |                  | %           |                      | %              |             | %           |                | %           |             | %              |             |             |                  |             |
| Jan         | 17,486           | 0.3         | Jan                  | 26,722         | 1.3         | Jan         | 26,144         | 0.4         | Jan         | 70,352         | 0.7         | Jan         | 221,313          | 0.5         |
| Feb         | 16,501           | 0.9         | Feb                  | 25,948         | 1.1         | Feb         | 24,884         | 0.5         | Feb         | 67,333         | 0.8         | Feb         | 212,221          | 0.6         |
| Mar         | 19,833           | -0.5        | Mar                  | 30,537         | -1.9        | Mar         | 29,986         | -1.7        | Mar         | 80,357         | -1.5        | Mar         | 249,102          | -1.1        |
| Q1          | 53,820           | 0.2         | Q1                   | 83,207         | 0.1         | Q1          | 81,014         | -0.4        | Q1          | 218,041        | -0.1        | Q1          | 682,637          | 0.0         |
| Apr         | 20,430           | -2.2        | Apr                  | 30,475         | -3.2        | Apr         | 30,072         | -3.5        | Apr         | 80,976         | -3.1        | Apr         | 248,207          | -2.3        |
| May         | 21,077           | -2.6        | May                  | 31,999         | -2.5        | May         | 31,196         | -2.9        | May         | 84,272         | -2.6        | May         | 252,738          | -1.8        |
| Jun         | 21,287           | -2.2        | Jun                  | 33,031         | -1.7        | Jun         | 32,034         | -2.1        | Jun         | 86,352         | -2.0        | Jun         | 256,542          | -1.4        |
| Q2          | 62,794           | -2.3        | Q2                   | 95,505         | -2.4        | Q2          | 93,301         | -2.8        | Q2          | 251,600        | -2.6        | Q2          | 757,487          | -1.8        |
| 1st Half    | 116,614          | -1.2        | 1st Half             | 178,712        | -1.3        | 1st Half    | 174,315        | -1.7        | 1st Half    | 469,641        | -1.4        | 1st Half    | 1,440,123        | -1.0        |
| Jul         | 23,230           | -2.3        | Jul                  | 35,068         | -2.6        | Jul         | 32,804         | -2.9        | Jul         | 91,102         | -2.6        | Jul         | 259,051          | -2.5        |
| Aug         | 22,272           | -3.0        | Aug                  | 34,138         | -2.2        | Aug         | 32,141         | -2.4        | Aug         | 88,551         | -2.4        | Aug         | 259,359          | -1.9        |
| Sep         | 19,969           | -1.3        | Sep                  | 31,525         | -1.7        | Sep         | 29,627         | -2.5        | Sep         | 81,121         | -1.9        | Sep         | 240,654          | -1.6        |
| Q3          | 65,470           | -2.2        | Q3                   | 100,730        | -2.2        | Q3          | 94,572         | -2.6        | Q3          | 260,773        | -2.3        | Q3          | 759,063          | -2.0        |
| Oct         | 20,623           | -2.8        | Oct                  | 32,362         | -2.3        | Oct         | 30,862         | -3.0        | Oct         | 83,846         | -2.7        | Oct         | 250,653          | -2.4        |
| Nov         | 19,577           | -1.2        | Nov                  | 29,805         | -1.0        | Nov         | 27,826         | -1.8        | Nov         | 77,208         | -1.3        | Nov         | 237,204          | -1.0        |
| Dec         | 19,822           | 0.9         | Dec                  | 29,602         | 1.5         | Dec         | 27,800         | 1.0         | Dec         | 77,225         | 1.2         | Dec         | 243,585          | 1.1         |
| Q4          | 60,022           | -1.0        | Q4                   | 91,769         | -0.7        | Q4          | 86,488         | -1.3        | Q4          | 238,279        | -1.0        | Q4          | 731,442          | -0.8        |
| 2nd Half    | 125,493          | -1.7        | 2nd Half             | 192,500        | -1.5        | 2nd Half    | 181,060        | -2.0        | 2nd Half    | 499,052        | -1.7        | 2nd Half    | 1,490,505        | -1.4        |
| <b>Year</b> | <b>242,106</b>   | <b>-1.4</b> | <b>Year</b>          | <b>371,212</b> | <b>-1.4</b> | <b>Year</b> | <b>355,375</b> | <b>-1.9</b> | <b>Year</b> | <b>968,693</b> | <b>-1.6</b> | <b>Year</b> | <b>2,930,628</b> | <b>-1.2</b> |

| Year - 2012 |                  |            |                      |               |             |             |               |            |             |               |            |             |                |            |
|-------------|------------------|------------|----------------------|---------------|-------------|-------------|---------------|------------|-------------|---------------|------------|-------------|----------------|------------|
|             | Rural Interstate |            | Rural Other Arterial |               | Other Rural |             | Total Rural   |            | All Systems |               |            |             |                |            |
|             |                  | %          |                      | %             |             | %           |               | %          |             | %             |            |             |                |            |
| Jan         | 17,604           | 0.7        | Jan                  | 27,160        | 1.6         | Jan         | 26,480        | 1.3        | Jan         | 71,245        | 1.3        | Jan         | 224,798        | 1.6        |
| Feb         |                  |            | Feb                  |               |             | Feb         |               |            | Feb         |               |            | Feb         |                |            |
| Mar         |                  |            | Mar                  |               |             | Mar         |               |            | Mar         |               |            | Mar         |                |            |
| Q1          | 17,604           | 0.7        | Q1                   | 27,160        | 1.6         | Q1          | 26,480        | 1.3        | Q1          | 71,245        | 1.3        | Q1          | 224,798        | 1.6        |
| Apr         |                  |            | Apr                  |               |             | Apr         |               |            | Apr         |               |            | Apr         |                |            |
| May         |                  |            | May                  |               |             | May         |               |            | May         |               |            | May         |                |            |
| Jun         |                  |            | Jun                  |               |             | Jun         |               |            | Jun         |               |            | Jun         |                |            |
| Q2          |                  | 0.0        | Q2                   |               | 0.0         | Q2          |               | 0.0        | Q2          |               | 0.0        | Q2          |                | 0.0        |
| 1st Half    | 17,604           | 0.7        | 1st Half             | 27,160        | 1.6         | 1st Half    | 26,480        | 1.3        | 1st Half    | 71,245        | 1.3        | 1st Half    | 224,798        | 1.6        |
| Jul         |                  |            | Jul                  |               |             | Jul         |               |            | Jul         |               |            | Jul         |                |            |
| Aug         |                  |            | Aug                  |               |             | Aug         |               |            | Aug         |               |            | Aug         |                |            |
| Sep         |                  |            | Sep                  |               |             | Sep         |               |            | Sep         |               |            | Sep         |                |            |
| Q3          |                  | 0.0        | Q3                   |               | 0.0         | Q3          |               | 0.0        | Q3          |               | 0.0        | Q3          |                | 0.0        |
| Oct         |                  |            | Oct                  |               |             | Oct         |               |            | Oct         |               |            | Oct         |                |            |
| Nov         |                  |            | Nov                  |               |             | Nov         |               |            | Nov         |               |            | Nov         |                |            |
| Dec         |                  |            | Dec                  |               |             | Dec         |               |            | Dec         |               |            | Dec         |                |            |
| Q4          |                  | 0.0        | Q4                   |               | 0.0         | Q4          |               | 0.0        | Q4          |               | 0.0        | Q4          |                | 0.0        |
| 2nd Half    |                  | 0.0        | 2nd Half             |               | 0.0         | 2nd Half    |               | 0.0        | 2nd Half    |               | 0.0        | 2nd Half    |                | 0.0        |
| <b>Year</b> | <b>17,604</b>    | <b>0.7</b> | <b>Year</b>          | <b>27,160</b> | <b>1.6</b>  | <b>Year</b> | <b>26,480</b> | <b>1.3</b> | <b>Year</b> | <b>71,245</b> | <b>1.3</b> | <b>Year</b> | <b>224,798</b> | <b>1.6</b> |

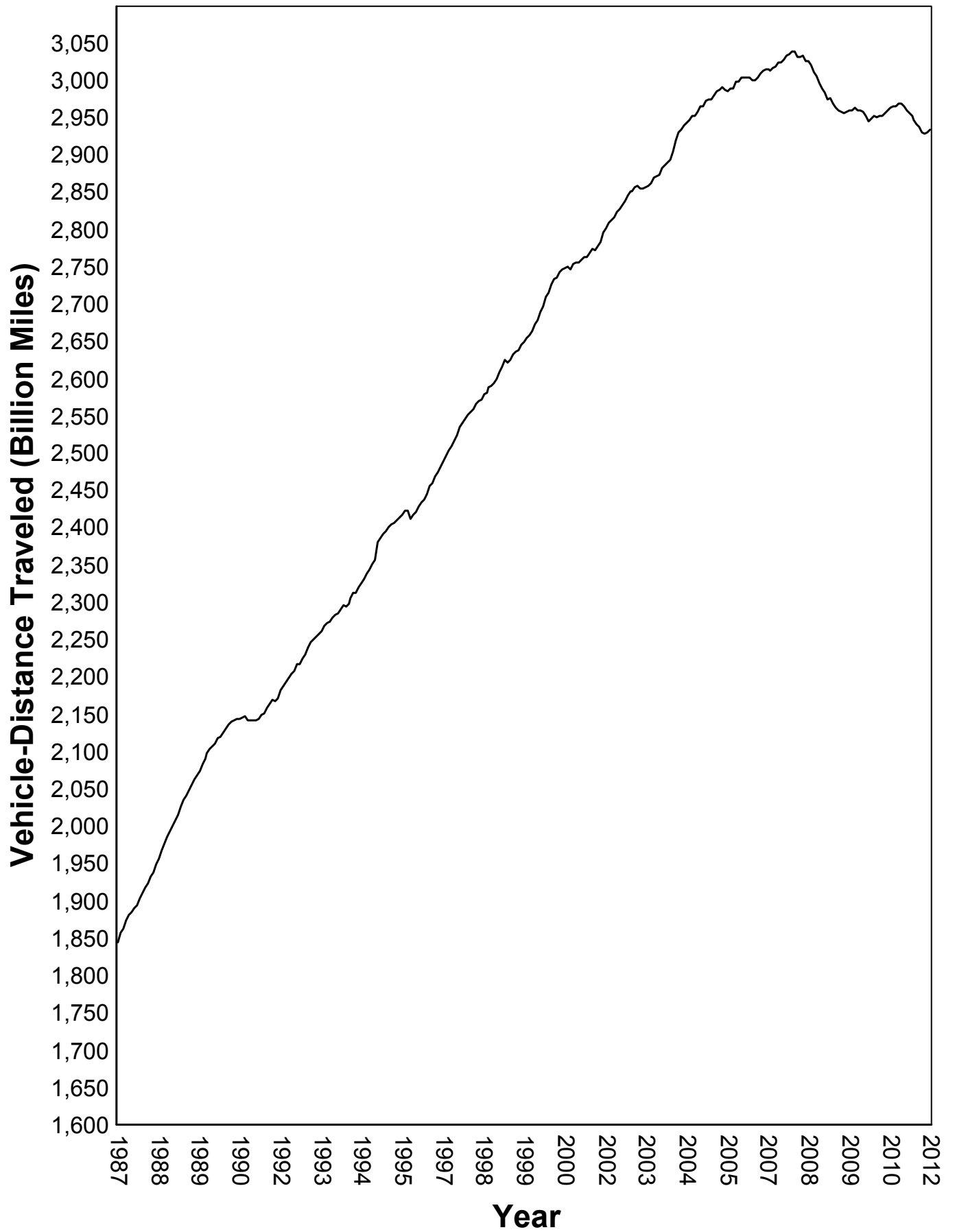
Table - 7. Estimated Urban Vehicle Miles (Millions) and Percent Change from Same Period Previous Year\*\*

| <b>Year - 2011</b>        |                |             |                               |                  |             |                      |                |             |                      |                  |                      |             |                  |             |
|---------------------------|----------------|-------------|-------------------------------|------------------|-------------|----------------------|----------------|-------------|----------------------|------------------|----------------------|-------------|------------------|-------------|
| <u>Urban Interstate</u> % |                |             | <u>Urban Other Arterial</u> % |                  |             | <u>Other Urban</u> % |                |             | <u>Total Urban</u> % |                  | <u>All Systems</u> % |             |                  |             |
| Jan                       | 36,018         | 0.5         | Jan                           | 80,506           | 0.5         | Jan                  | 34,438         | 0.4         | Jan                  | 150,962          | 0.5                  | Jan         | 221,313          | 0.5         |
| Feb                       | 34,480         | 0.7         | Feb                           | 77,215           | 0.1         | Feb                  | 33,193         | 1.3         | Feb                  | 144,888          | 0.5                  | Feb         | 212,221          | 0.6         |
| Mar                       | 40,497         | 0.1         | Mar                           | 89,893           | -1.3        | Mar                  | 38,355         | -0.9        | Mar                  | 168,746          | -0.9                 | Mar         | 249,102          | -1.1        |
| Q1                        | 110,995        | 0.4         | Q1                            | 247,615          | -0.3        | Q1                   | 105,985        | 0.2         | Q1                   | 464,595          | 0.0                  | Q1          | 682,637          | 0.0         |
| Apr                       | 40,053         | -1.0        | Apr                           | 88,589           | -2.0        | Apr                  | 38,589         | -2.4        | Apr                  | 167,231          | -1.9                 | Apr         | 248,207          | -2.3        |
| May                       | 41,242         | -0.6        | May                           | 88,554           | -1.7        | May                  | 38,671         | -1.4        | May                  | 168,466          | -1.4                 | May         | 252,738          | -1.8        |
| Jun                       | 42,277         | -0.1        | Jun                           | 89,427           | -1.2        | Jun                  | 38,486         | -1.9        | Jun                  | 170,190          | -1.1                 | Jun         | 256,542          | -1.4        |
| Q2                        | 123,571        | -0.6        | Q2                            | 266,570          | -1.6        | Q2                   | 115,745        | -1.9        | Q2                   | 505,887          | -1.4                 | Q2          | 757,487          | -1.8        |
| 1st Half                  | 234,566        | -0.1        | 1st Half                      | 514,185          | -1.0        | 1st Half             | 221,731        | -0.9        | 1st Half             | 970,482          | -0.8                 | 1st Half    | 1,440,123        | -1.0        |
| Jul                       | 40,186         | -2.2        | Jul                           | 89,212           | -2.5        | Jul                  | 38,551         | -2.8        | Jul                  | 167,949          | -2.5                 | Jul         | 259,051          | -2.5        |
| Aug                       | 41,311         | -1.6        | Aug                           | 91,055           | -1.6        | Aug                  | 38,441         | -1.4        | Aug                  | 170,808          | -1.6                 | Aug         | 259,359          | -1.9        |
| Sep                       | 39,371         | -1.1        | Sep                           | 84,304           | -1.5        | Sep                  | 35,857         | -2.0        | Sep                  | 159,533          | -1.5                 | Sep         | 240,654          | -1.6        |
| Q3                        | 120,868        | -1.6        | Q3                            | 264,572          | -1.9        | Q3                   | 112,850        | -2.1        | Q3                   | 498,290          | -1.9                 | Q3          | 759,063          | -2.0        |
| Oct                       | 40,316         | -1.7        | Oct                           | 89,385           | -2.1        | Oct                  | 37,106         | -3.3        | Oct                  | 166,807          | -2.3                 | Oct         | 250,653          | -2.4        |
| Nov                       | 39,353         | -0.7        | Nov                           | 84,594           | -0.7        | Nov                  | 36,049         | -1.4        | Nov                  | 159,996          | -0.9                 | Nov         | 237,204          | -1.0        |
| Dec                       | 40,059         | 1.6         | Dec                           | 87,744           | 0.9         | Dec                  | 38,557         | 1.1         | Dec                  | 166,360          | 1.1                  | Dec         | 243,585          | 1.1         |
| Q4                        | 119,728        | -0.3        | Q4                            | 261,723          | -0.7        | Q4                   | 111,712        | -1.2        | Q4                   | 493,163          | -0.7                 | Q4          | 731,442          | -0.8        |
| 2nd Half                  | 240,597        | -0.9        | 2nd Half                      | 526,295          | -1.3        | 2nd Half             | 224,562        | -1.7        | 2nd Half             | 991,453          | -1.3                 | 2nd Half    | 1,490,505        | -1.4        |
| <b>Year</b>               | <b>475,163</b> | <b>-0.5</b> | <b>Year</b>                   | <b>1,040,480</b> | <b>-1.1</b> | <b>Year</b>          | <b>446,292</b> | <b>-1.3</b> | <b>Year</b>          | <b>1,961,935</b> | <b>-1.0</b>          | <b>Year</b> | <b>2,930,628</b> | <b>-1.2</b> |

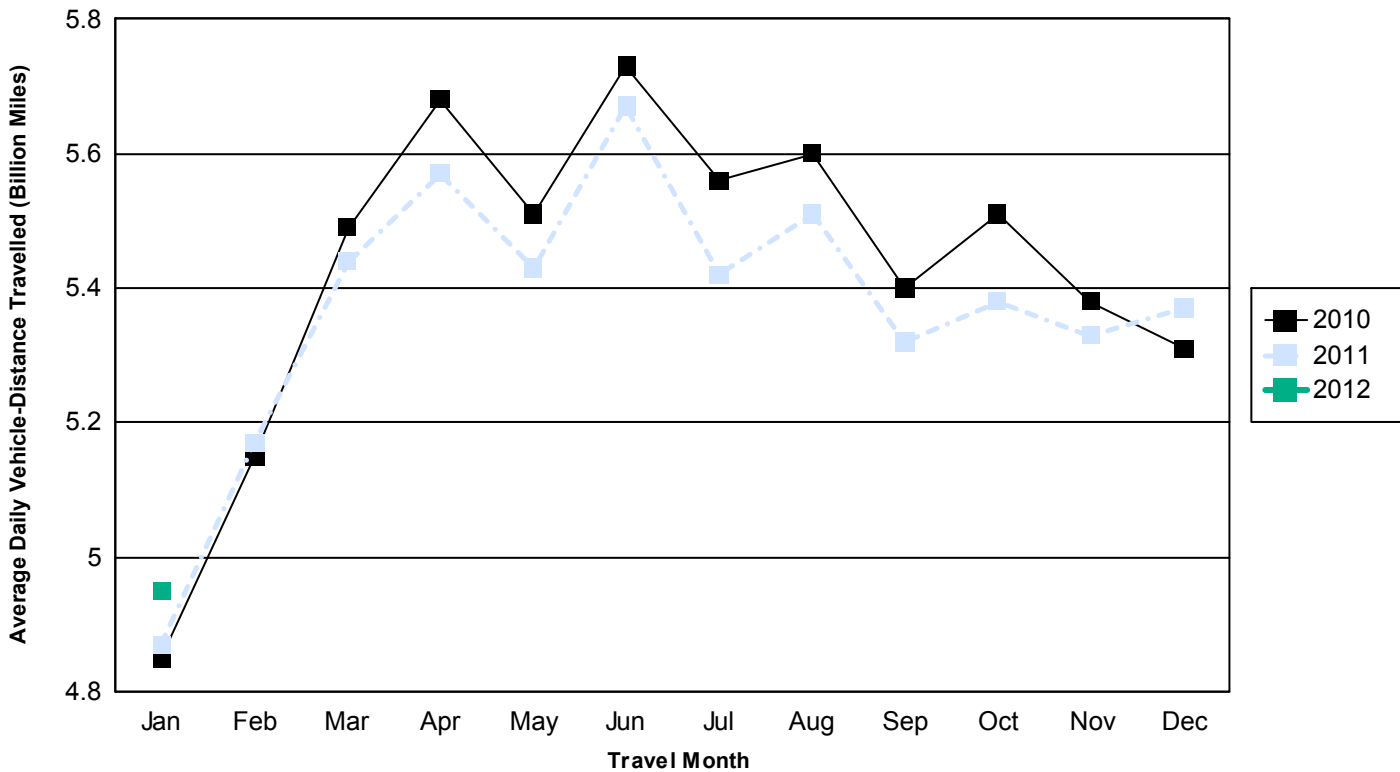
| <b>Year - 2012</b>        |               |            |                               |               |            |                      |               |            |                      |                |                      |             |                |            |
|---------------------------|---------------|------------|-------------------------------|---------------|------------|----------------------|---------------|------------|----------------------|----------------|----------------------|-------------|----------------|------------|
| <u>Urban Interstate</u> % |               |            | <u>Urban Other Arterial</u> % |               |            | <u>Other Urban</u> % |               |            | <u>Total Urban</u> % |                | <u>All Systems</u> % |             |                |            |
| Jan                       | 36,823        | 2.2        | Jan                           | 81,695        | 1.5        | Jan                  | 35,035        | 1.7        | Jan                  | 153,554        | 1.7                  | Jan         | 224,798        | 1.6        |
| Feb                       |               |            | Feb                           |               |            | Feb                  |               |            | Feb                  |                |                      | Feb         |                |            |
| Mar                       |               |            | Mar                           |               |            | Mar                  |               |            | Mar                  |                |                      | Mar         |                |            |
| Q1                        | 36,823        | 2.2        | Q1                            | 81,695        | 1.5        | Q1                   | 34,737        | 0.9        | Q1                   | 153,554        | 1.7                  | Q1          | 224,798        | 1.6        |
| Apr                       |               |            | Apr                           |               |            | Apr                  |               |            | Apr                  |                |                      | Apr         |                |            |
| May                       |               |            | May                           |               |            | May                  |               |            | May                  |                |                      | May         |                |            |
| Jun                       |               |            | Jun                           |               |            | Jun                  |               |            | Jun                  |                |                      | Jun         |                |            |
| Q2                        |               | 0.0        | Q2                            |               | 0.0        | Q2                   |               | 0.0        | Q2                   |                | 0.0                  | Q2          |                | 0.0        |
| 1st Half                  | 36,823        | 2.2        | 1st Half                      | 81,695        | 1.5        | 1st Half             | 35,035        | 1.7        | 1st Half             | 153,554        | 1.7                  | 1st Half    | 224,798        | 1.6        |
| Jul                       |               |            | Jul                           |               |            | Jul                  |               |            | Jul                  |                |                      | Jul         |                |            |
| Aug                       |               |            | Aug                           |               |            | Aug                  |               |            | Aug                  |                |                      | Aug         |                |            |
| Sep                       |               |            | Sep                           |               |            | Sep                  |               |            | Sep                  |                |                      | Sep         |                |            |
| Q3                        |               | 0.0        | Q3                            |               | 0.0        | Q3                   |               | 0.0        | Q3                   |                | 0.0                  | Q3          |                | 0.0        |
| Oct                       |               |            | Oct                           |               |            | Oct                  |               |            | Oct                  |                |                      | Oct         |                |            |
| Nov                       |               |            | Nov                           |               |            | Nov                  |               |            | Nov                  |                |                      | Nov         |                |            |
| Dec                       |               |            | Dec                           |               |            | Dec                  |               |            | Dec                  |                |                      | Dec         |                |            |
| Q4                        |               | 0.0        | Q4                            |               | 0.0        | Q4                   |               | 0.0        | Q4                   |                | 0.0                  | Q4          |                | 0.0        |
| 2nd Half                  |               | 0.0        | 2nd Half                      |               | 0.0        | 2nd Half             |               | 0.0        | 2nd Half             |                | 0.0                  | 2nd Half    |                | 0.0        |
| <b>Year</b>               | <b>36,823</b> | <b>2.2</b> | <b>Year</b>                   | <b>81,695</b> | <b>1.5</b> | <b>Year</b>          | <b>35,035</b> | <b>1.7</b> | <b>Year</b>          | <b>153,554</b> | <b>1.7</b>           | <b>Year</b> | <b>224,798</b> | <b>1.6</b> |



**Figure - 1. Moving 12-Month Total on ALL Roads**



Urban Highways



Rural Highways

