

NHTSA'S APPROACH TO ADAPTIVE HEADLIGHTING SYSTEMS

Markus Price, NHTSA

NHTSA Received a petition for rulemaking that would amend FMVSS No. 108 in order to allow for the optional installation of an Adaptive Driving Beam (ADB) headlighting system.

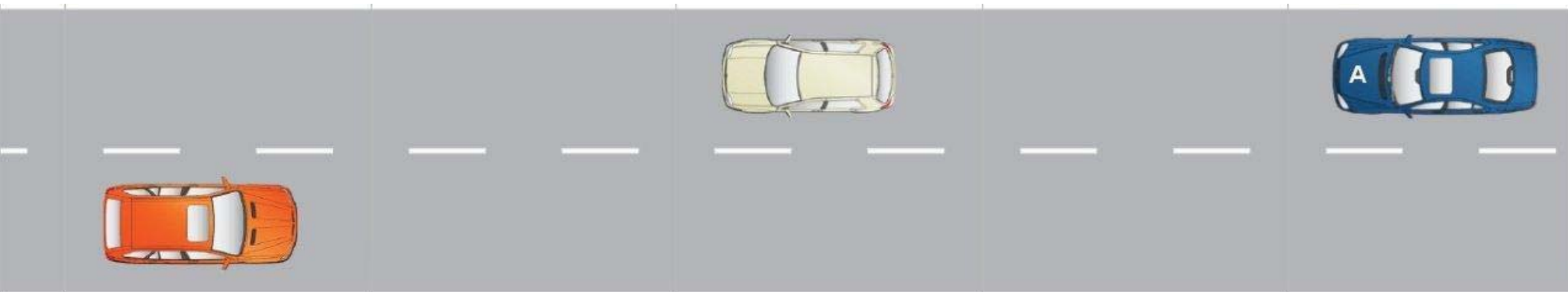
The Petition describes this headlighting system as having the following characteristics:

- Similar in concept to semi-automatic beam switching, but provides upper beam visibility in more cases
- Contains a headlighting system that varies its beam pattern in response to light sources directed at the vehicle
- Petitioned for a small addition to the beam switching section of FMVSS No. 108 to allow this ADB system

NHTSA is currently evaluating vehicles with ADB systems that have been approved for use in Europe

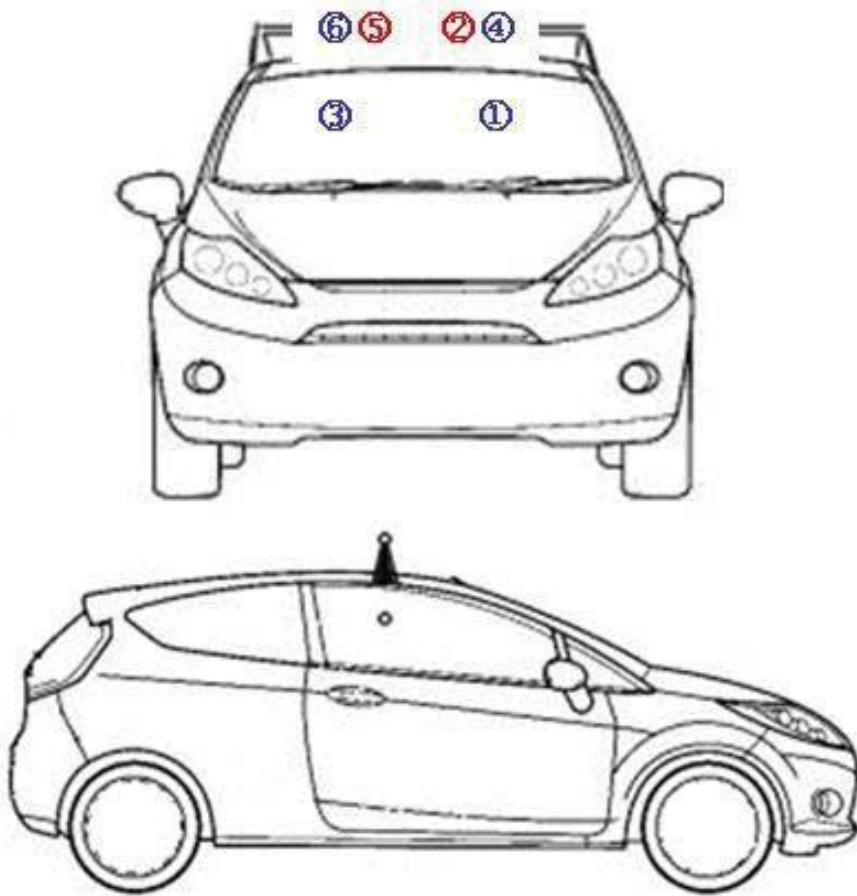
NHTSA is currently exposing ADB equipped vehicles through various ECE regulation scenarios in order to observe their performance:

- 1- We are making general observations as to the performance of these systems



Current NHTSA Research

- 2- We have instrumented a second vehicle (not equipped with ADB) to collect illumination measurements around exposed vehicles.



Next Steps

Next steps will be determined by the results of our current testing.