



APPLYING THE

# Crash Calendar

# Calendar Data Viz

PROJECT

TRANSPORTATION RESEARCH BOARD 2013



# BACKGROUND

TRANSPORTATION RESEARCH BOARD 2013

# Wisconsin's multi-disciplinary Traffic Safety Commissions

**(1)(a)** For each county, the county highway commissioner or a designated representative, the chief county traffic law enforcement officer or a designated representative, the county highway safety coordinator, and a representative designated by the county board from each of the disciplines of education, medicine and law and 3 representatives involved in law enforcement, highways and highway safety designated by the secretary of transportation shall comprise a traffic safety commission that shall meet at least quarterly to review traffic accident data from the county and other traffic safety related matters.

The county board chairperson, or the county executive or county administrator in a county having such offices, may appoint additional persons to serve as a member of the county traffic safety commission.

The commissions shall designate a person to prepare and maintain a spot map showing the locations of traffic accidents on county and town roads and on city and village streets if the population of the city or village is less than 5,000 and to maintain traffic accident data received from cities, villages and towns with a population of 5,000 or more under **S. 66.0485**.

Upon each review, the commission shall make written recommendations for any corrective actions it deems appropriate to the department, the county board, the county highway committee or any other appropriate branch of local government.

**(1)(b)** Counties may combine for the purposes of par. (a), if desired.

**(1)(c)** The commissions shall file a report on each meeting with the department.

**(2)** The department shall furnish each commission with traffic accident data and uniform traffic citation data for the rural, federal, state, and county highways in the jurisdictions represented in each commission, which shall identify the accident rates and arrest rates on their highways, and shall also furnish a suitable map for use in spotting accidents.



Wisconsin Bureau of Transportation Safety

:'#(

:'#|

:'#)

“too many  
**numbers!**”

“too much  
**statistics!**”

“hard to look at  
**all the data,**”

“I like the  
**number format  
vs. graphs and  
Charts,**”

“want to know where and  
**when crashes happen,**”

“**WHERE, WHEN,  
and HOW,**”

“location,  
**reason, and  
season,**”

“breakdown of causes of  
crashes would be **helpful to  
identify areas of extra  
Patrol,**”

“the easier it is to read ... the  
**more likely it will become  
actionable.**”

“time of day,  
**day of week, weather  
conditions,**”

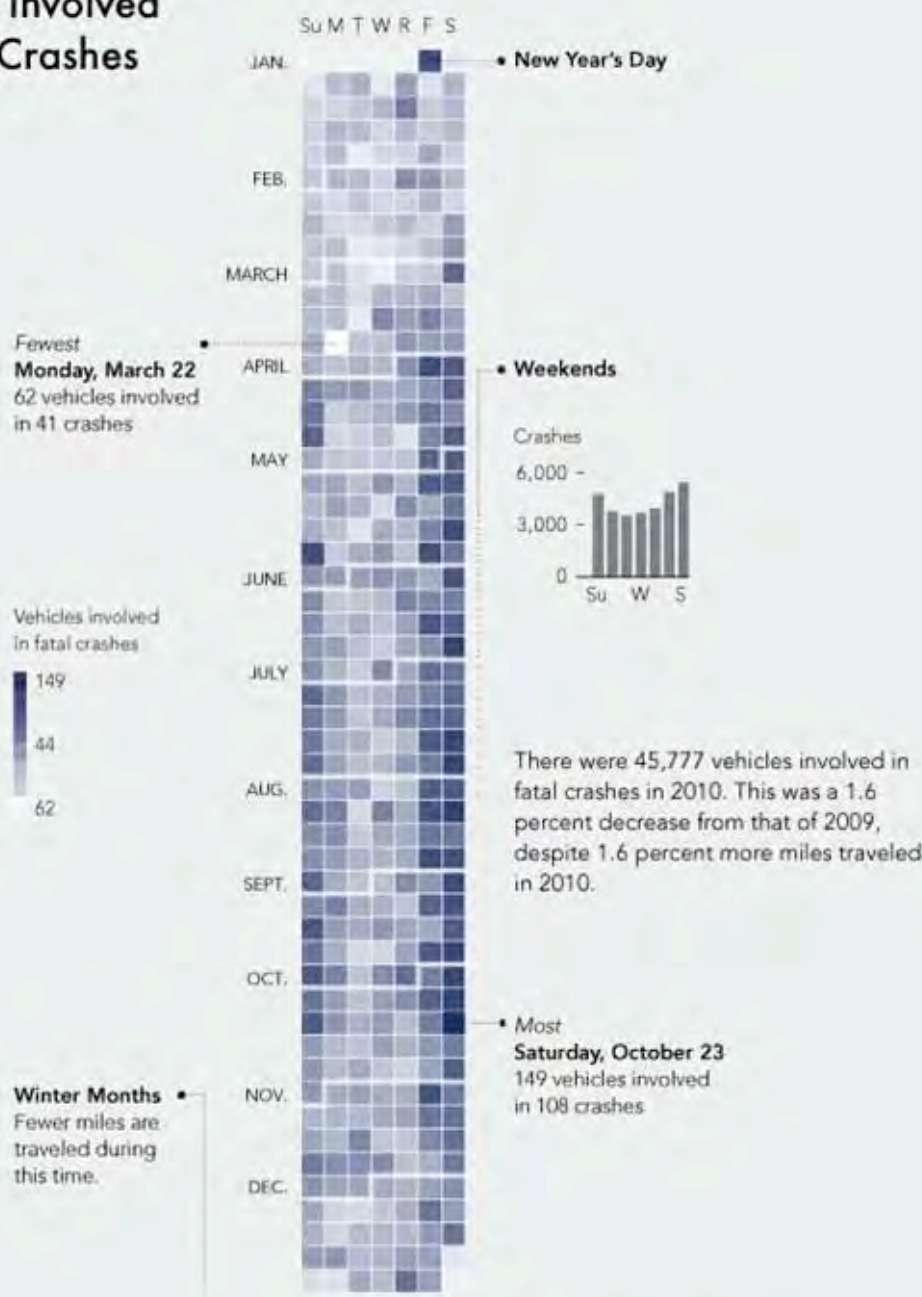


# what if?

“ It's a weekday and we know there's a storm coming. It's going to hit late-afternoon when a lot of people will be trying to get home from work. Where did we have the most crashes when we've had comparable storm events? If we could use our data to get at that kind of information quickly, we would be better able to deploy officers appropriately... ”

– *Commander Knudson*

# Vehicles Involved in Fatal Crashes 2010



<http://flowingdata.com/2012/01/11/vehicles-involved-in-fatal-crashes/>

**FlowingData**





# DEVELOPMENT

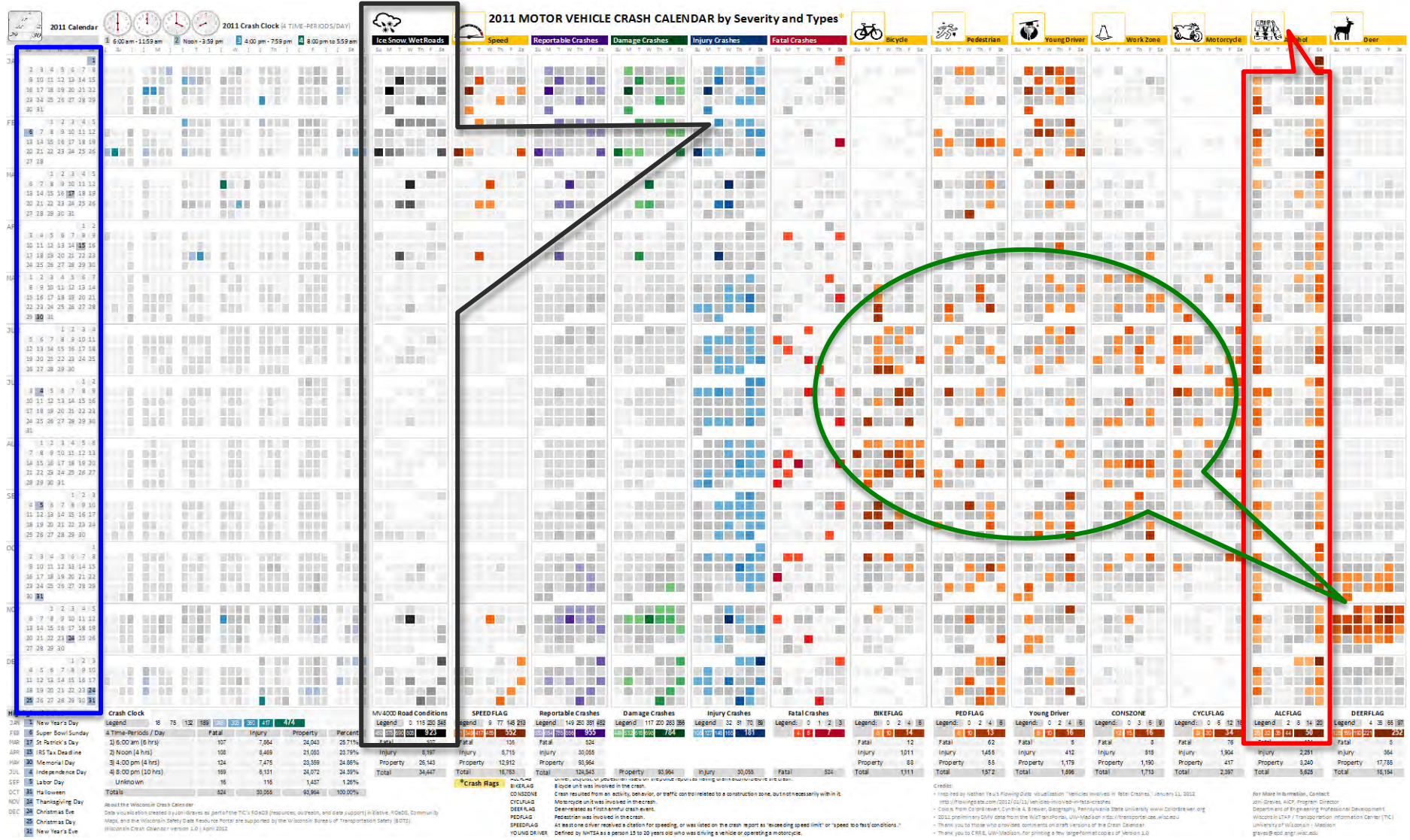
TRANSPORTATION RESEARCH BOARD 2013

**DESIGNING IS THE PRACTICE  
OF COMBINING STUFF.  
SO, THE MORE STUFF YOU KNOW,  
THE GREATER THE CHANCE  
YOU'LL FIND AN ORIGINAL COMBINATION.**

Mr CUP | [ecire@fabienbarral.com](mailto:ecire@fabienbarral.com)







bringing data to life ...



“Best use of Excel I’ve seen in a LONG time. I’m impressed that this was even possible using that tool.”

*Robert A. Scopatz, DATA-NEXUS*



# VARIATIONS

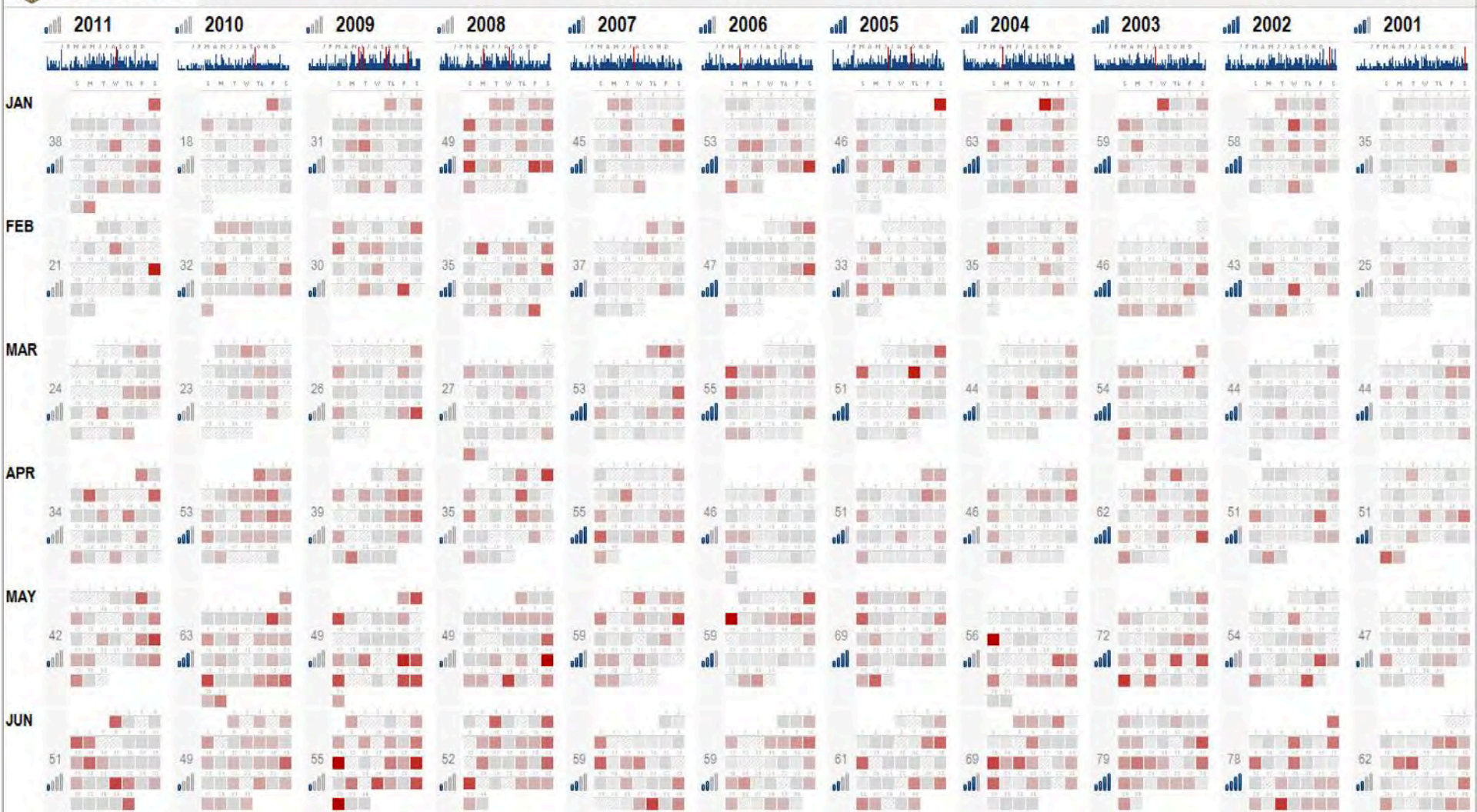
TRANSPORTATION RESEARCH BOARD 2013

# interactive web-demo (summer 2012)



## Calendar Data Vis – Wisconsin Fatal Motor Vehicle Crashes

... see end-of-column(s) for annual total(s)



# WI Fatalals (2001-11)















2012 INDIANA CRASH CALENDAR | draft 3



# Indiana LTAP





# DDACTS





MADD



# WI LARGE TRUCK DATA

TRANSPORTATION RESEARCH BOARD 2013



# WISCONSIN LARGE TRUCK SAFETY AND ENFORCEMENT STUDY

Project 04-24  
July 2011

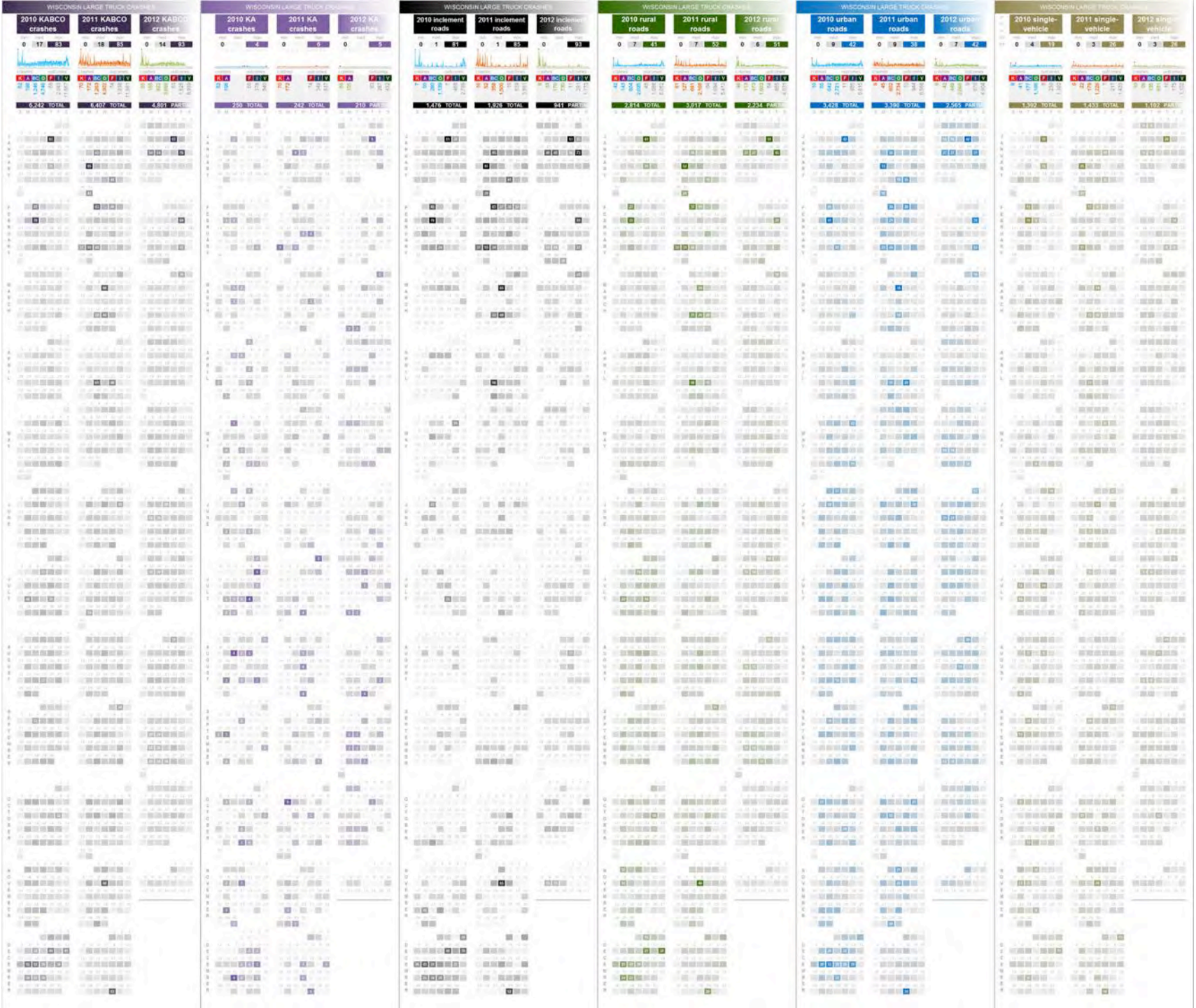
National Center for Freight & Infrastructure Research & Education  
College of Engineering  
Department of Civil and Environmental Engineering  
University of Wisconsin, Madison



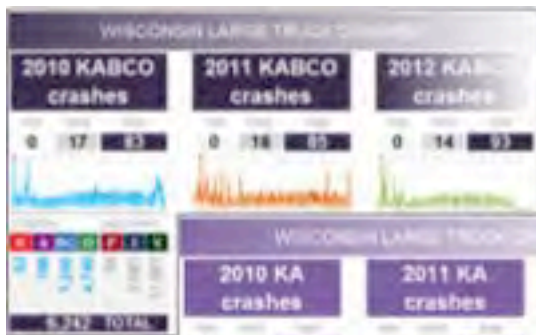
*Authors:* Andrea Bill, Francisco Serrano, and David Noyce  
University of Wisconsin, Madison

*Principal Investigator:* David Noyce  
Associate Professor, Department of Civil and Environmental Engineering, UW-Madison

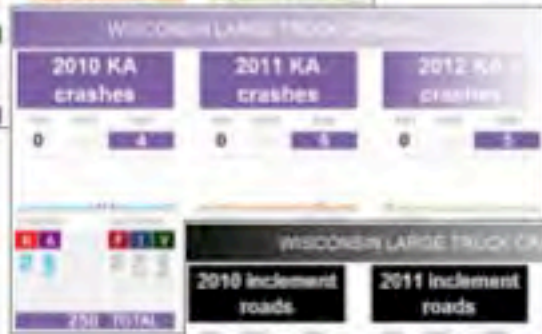








KABCO crashes



KA crashes



inclement roads



rural roads

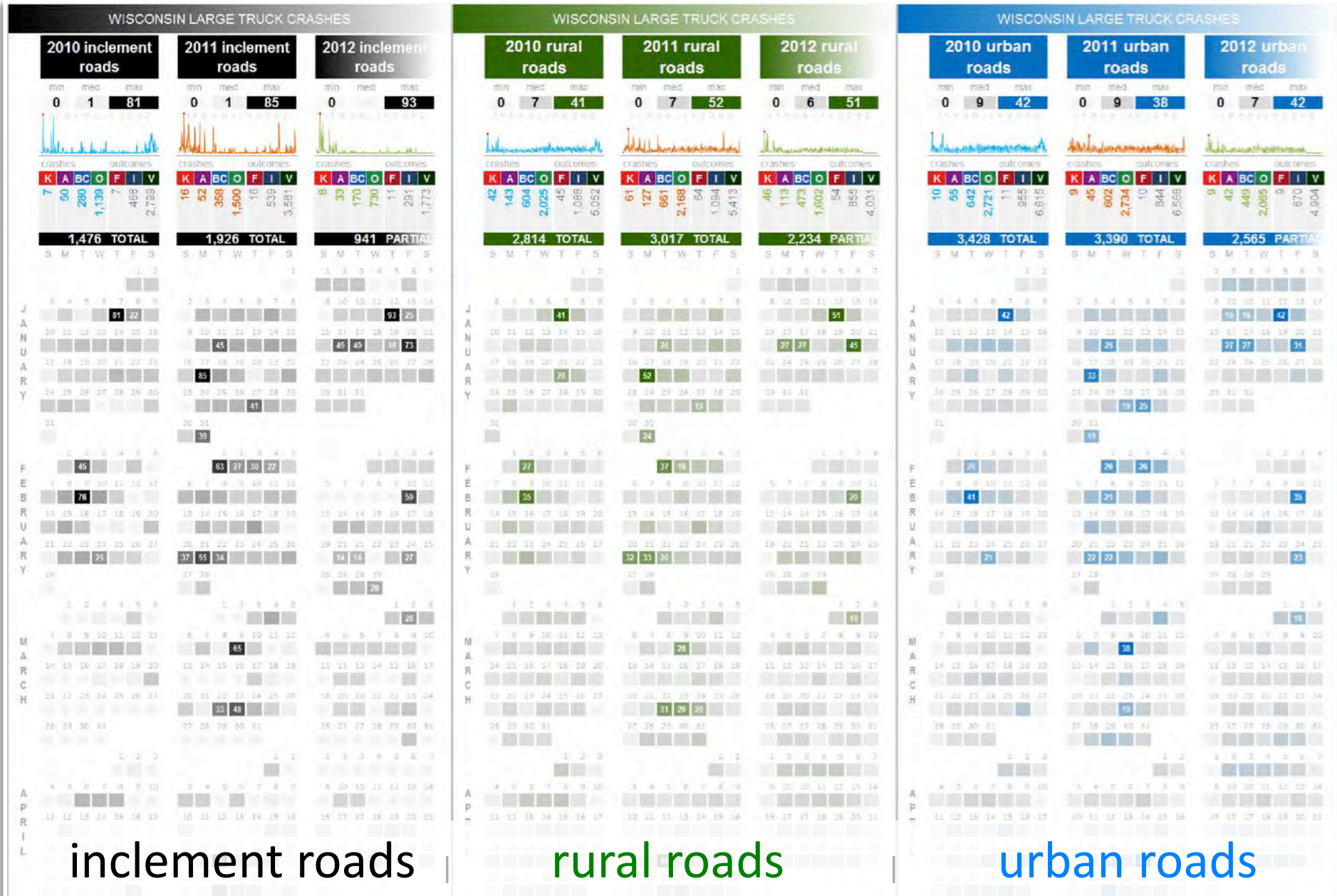


urban roads



single-vehicle

# Wisconsin large truck crashes (2010–12 DMV data)



# Joni Graves, AICP

Wisconsin LTAP Transportation Information Center  
Dept. of Engineering Professional Development UW-Madison

graves@epd.engr.wisc.edu

<http://wisconsinsafetydataportal.org>

