

Reinspection of ET Plus End Treatment

SR 4 WB Near Laurel Rd.
Contra Costa Co. California
N 37.97269, W 121.73937
Friday, January 30, 2015

Laurel Road 1/4
Hillcrest Avenue 3
A Street 4 1/4



General view of layout



Looking down at extruder head
Note lack of any obvious damage to
face or “wings” of extruder head



Chute width measurements made at 5 locations ★ at roughly equal spacing, top to bottom:

TOP	1 13/16 in
	1 13/16 in
← DIAPHRAGM	1 13/16 in
	1 13/16 in
BOTTOM	1 3/4 in

View of exit chute from back side;
Extruder head on left;
Note scuff marks on curve in chute

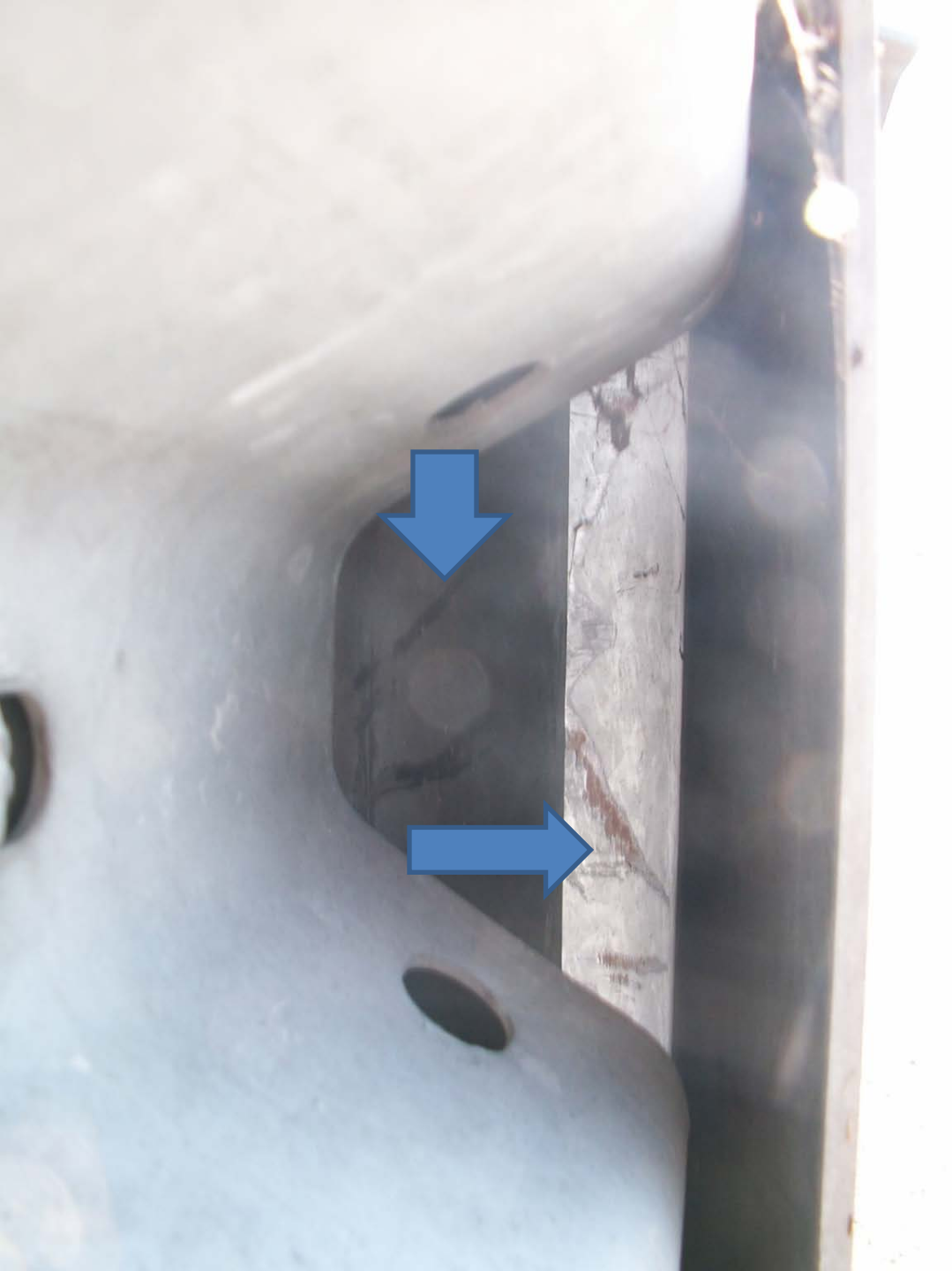


← Diaphragm

Another view of exit chute from back side of installation; Note scuff marks on curve in chute



Closer view of exit chute from back side of installation; Note scuff marks on curve in chute



View of exit chute from face of W-beam looking toward traffic; Note scuff marks on both sides of chute



Another view of exit chute from face of W-beam looking toward traffic; Note scuff marks on both sides of chute