

HVS-A & Safety Lab Site Design Update

Presented to: Airport Pavement Working Group

By: Murphy Flynn

Date: April 16, 2013



Federal Aviation
Administration



•Award of Site Design

- **Award Design Contract Later than Anticipated**

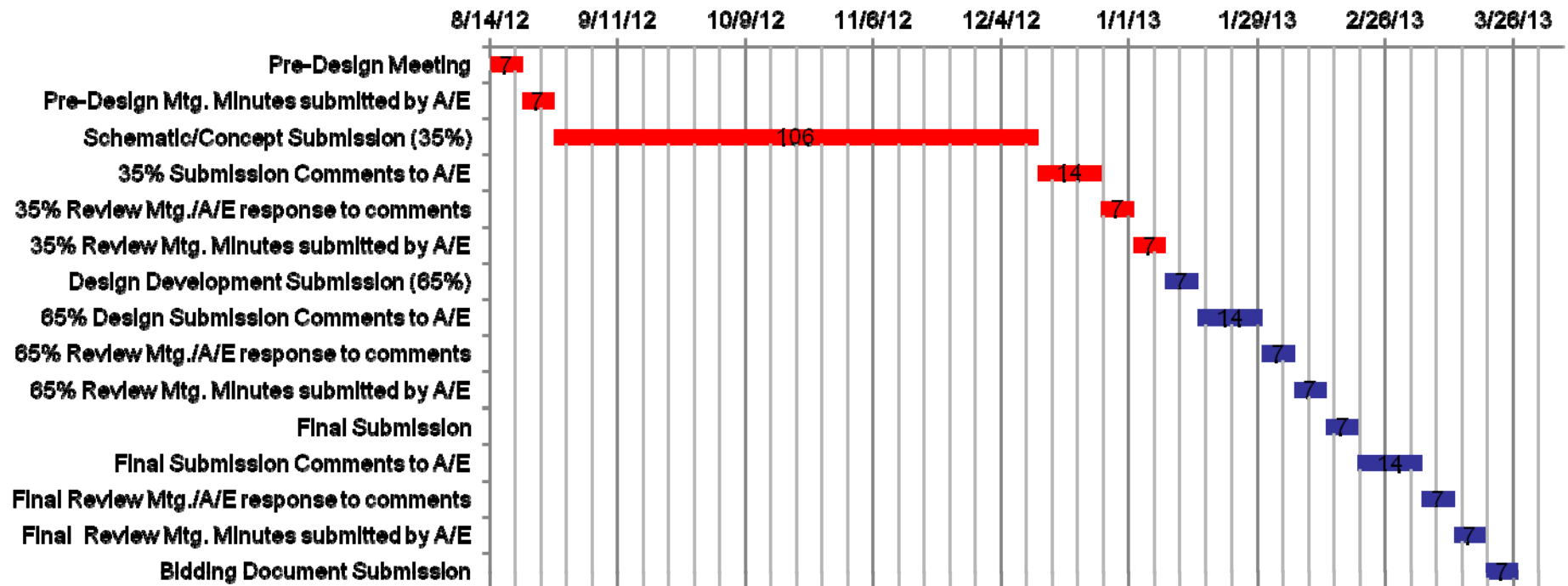
- RFP sent June 11, 2012
- Technical Center Fire June 21, 2012
- All available A/E manpower was shifted to support of post fire activities
- All available FAA Facilities Engineers shifted to post fire support activities
- Response to RFP received July 23
- Clarifications and final RFP received August 13

- **Site design awarded August 14**

Timeline

- Dec. 2010 – Submitted to MPSB
- Feb. 2011 – Received MPSB Acceptance
- Jun. 2011 – Requested SOW for EA
- Dec. 2011- EA SOW completed
- Mar. 2012 – Awarded EA
- May 2012 - SOW Engineering & Site Design
 - Includes Building, Storm Water & Soil Conservation Plans
- June 2012 - RFP for Site Design
- Aug. 2012 – Complete EA – Signed February 25, 2013
- August 2012 – Award Eng. & Site Design – Awarded 8/14/12
- April 2013 – Complete Site Design
- June 2013 – Award Construction

Design Contract Schedule

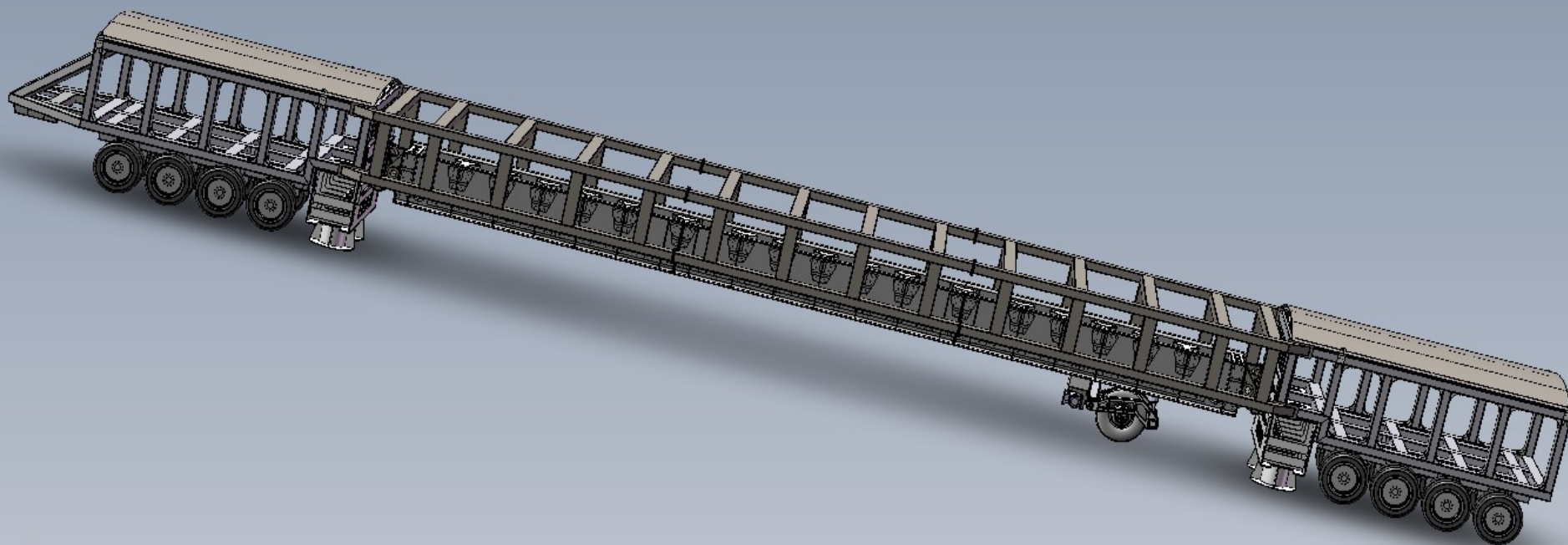
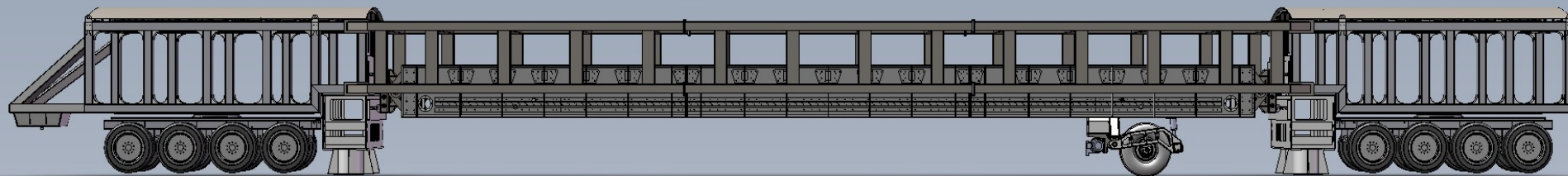


Conceptual Site Layout



35% Design Layout





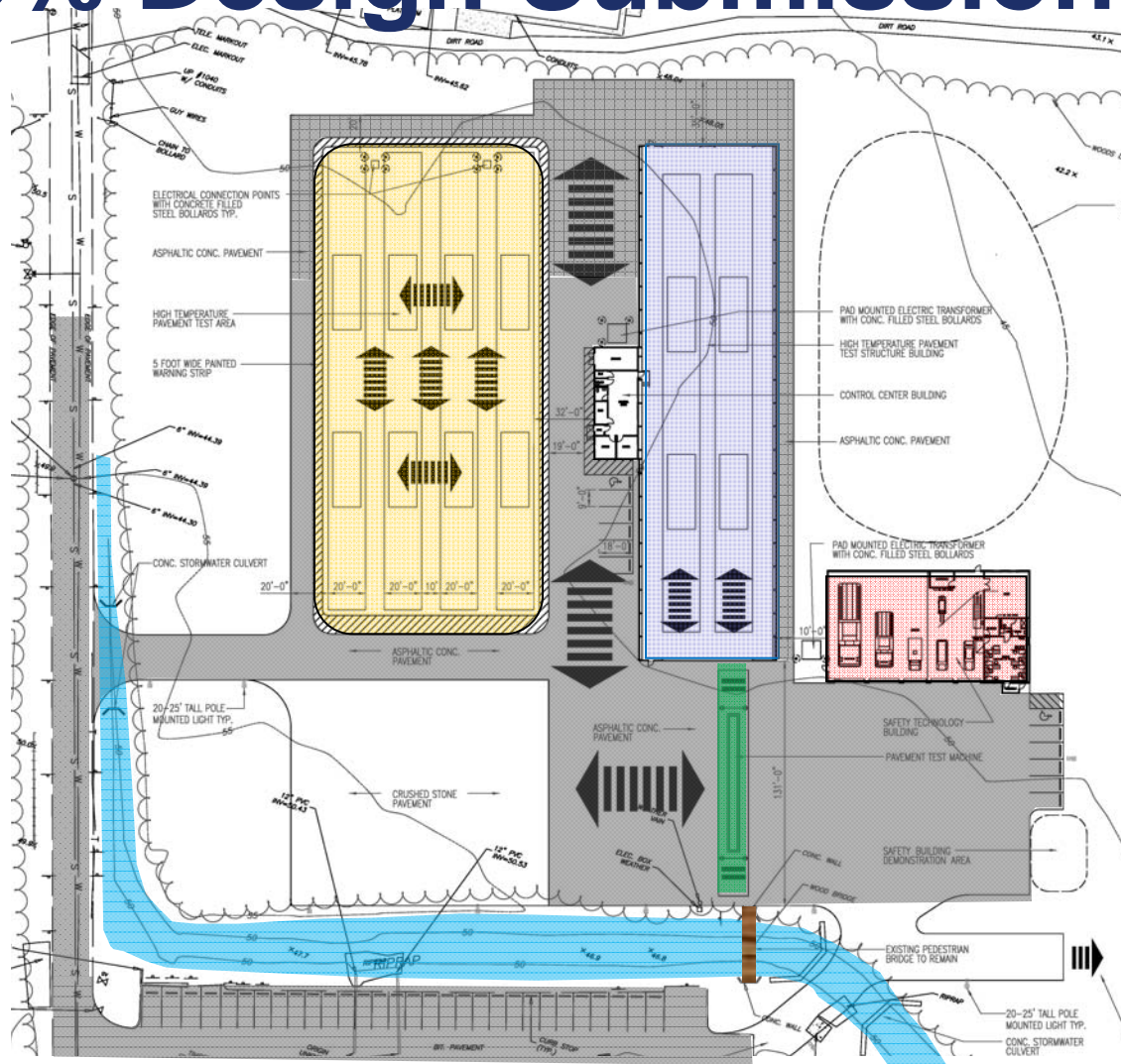
LENGTH: 121-feet

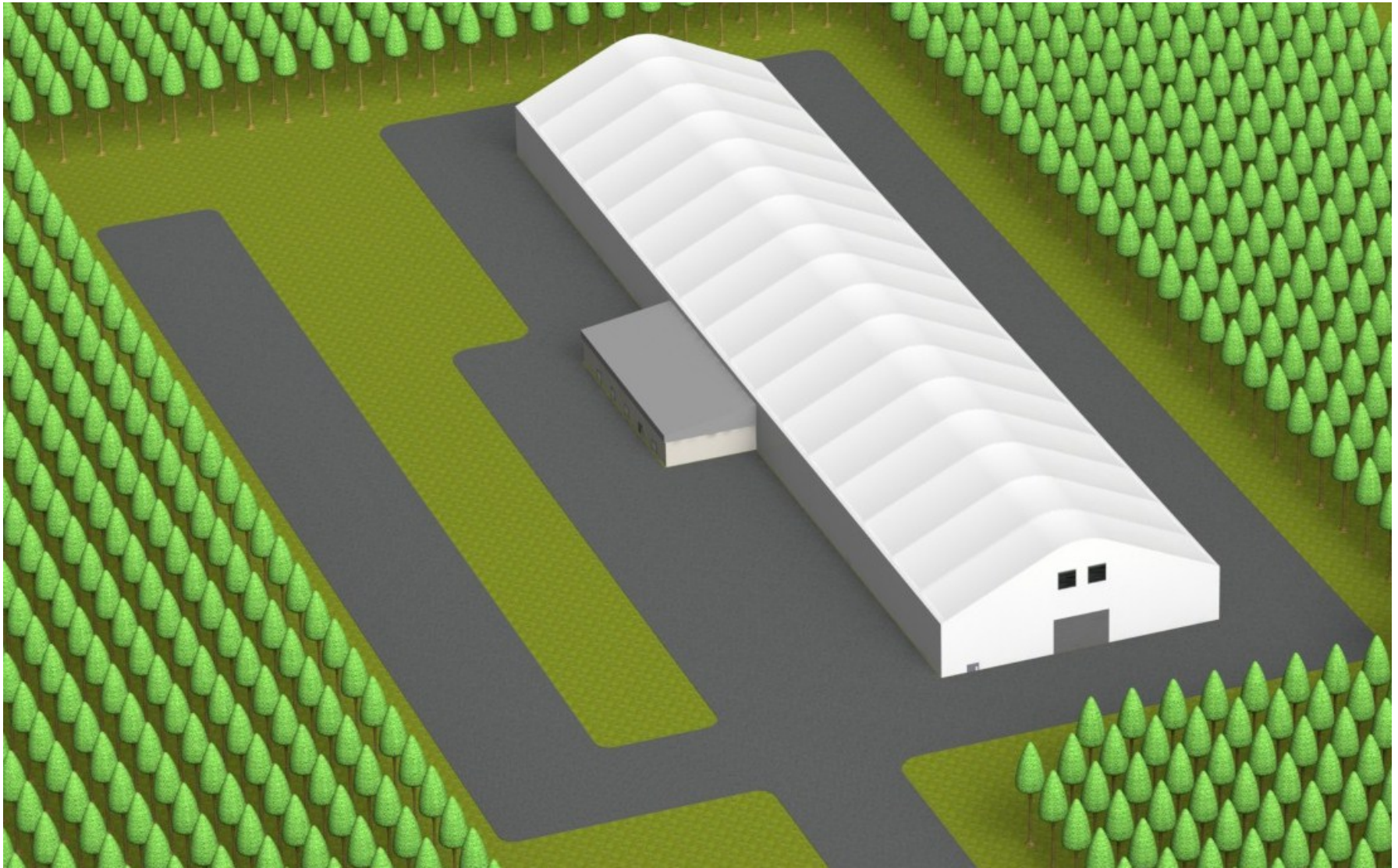
HEIGHT: 13-feet

WIDTH: 16-feet

BEAM LENGTH: 67-feet

35% Design Submission Layout

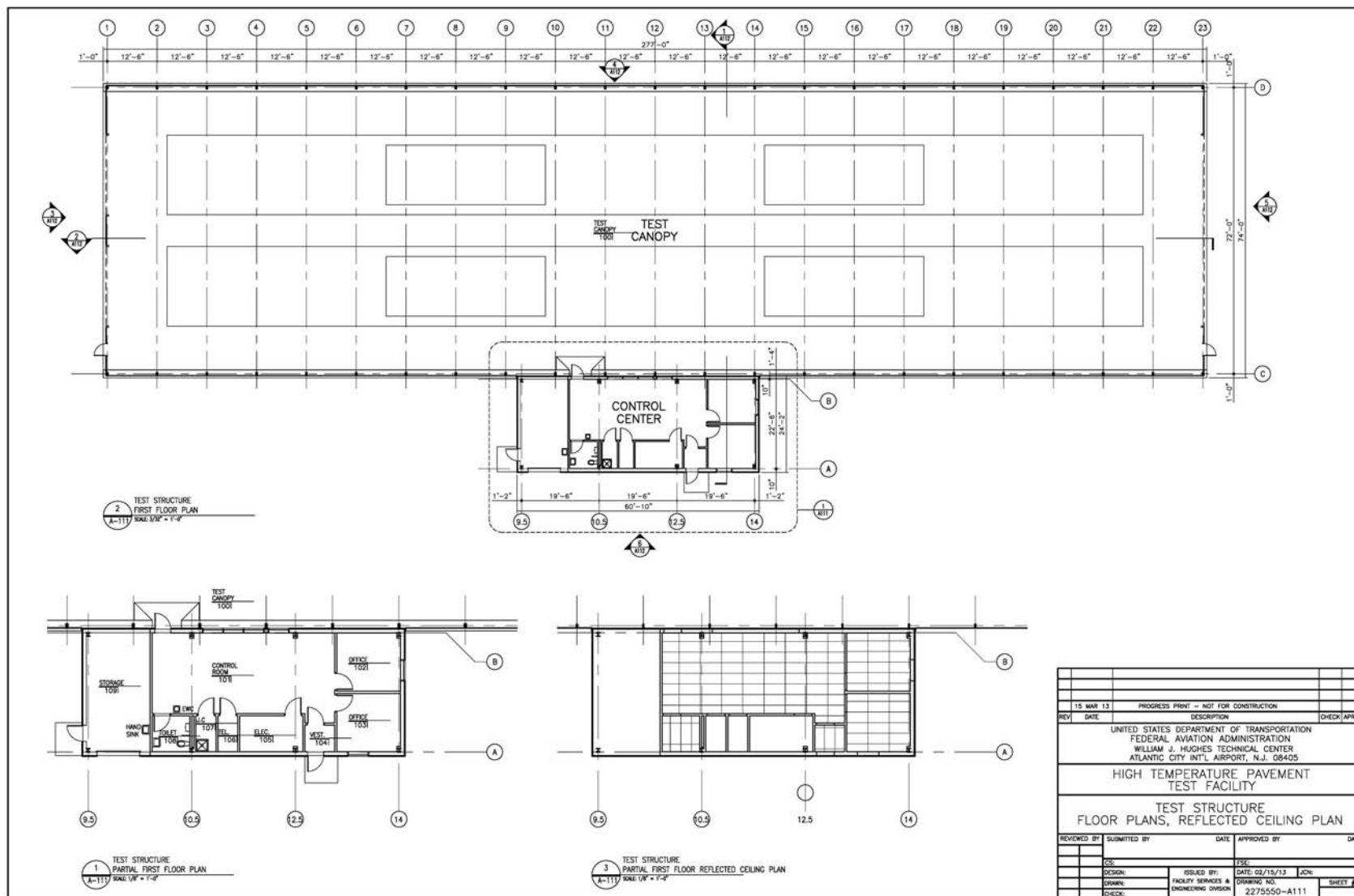


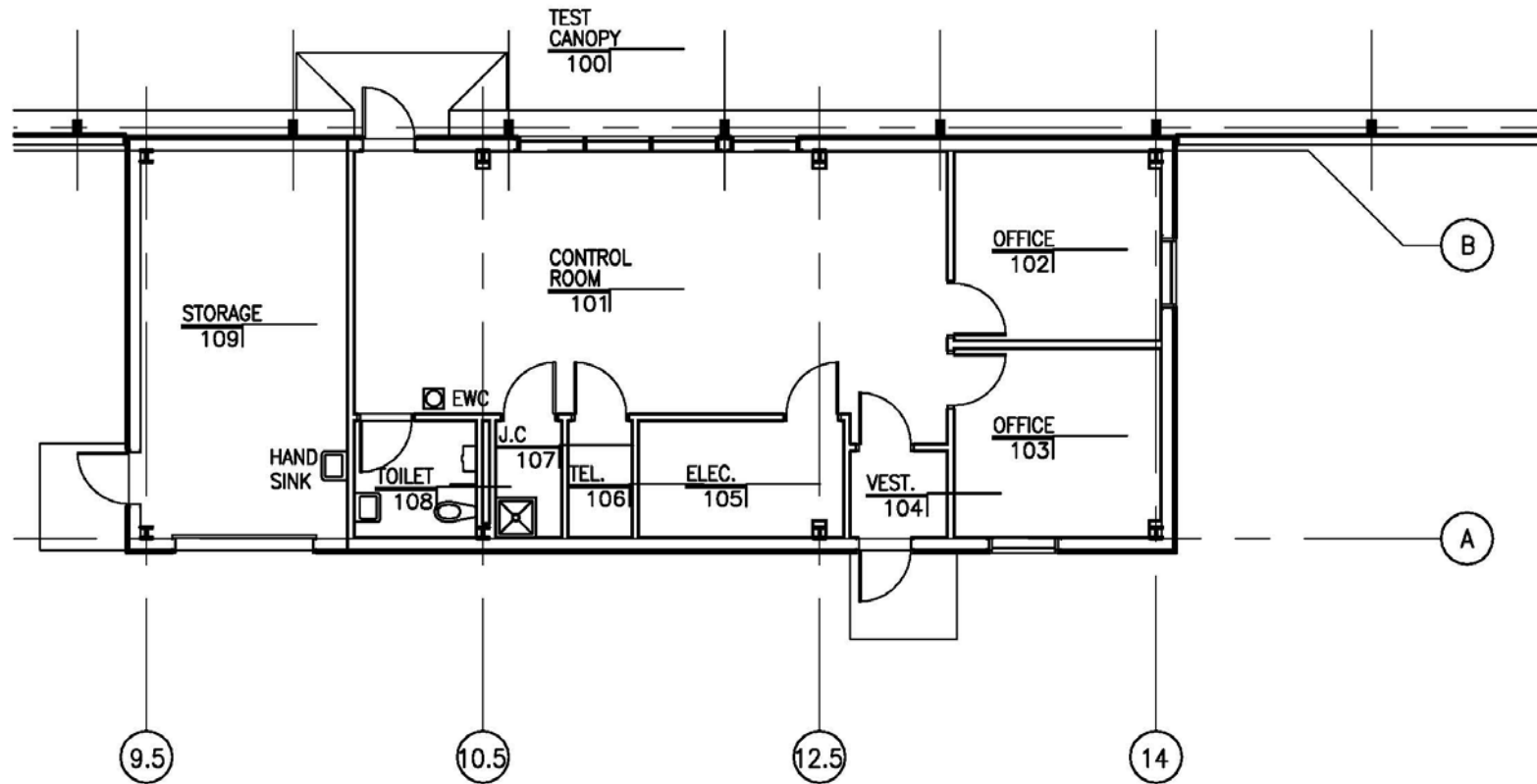




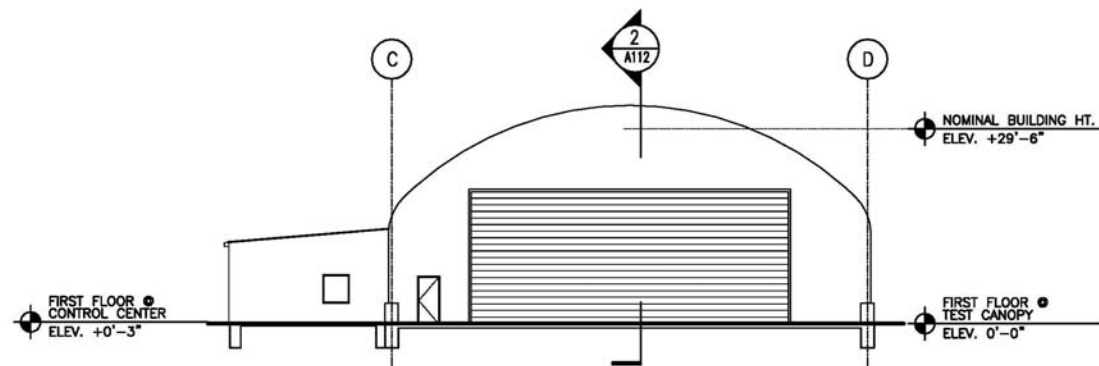
65% Site Design Submission



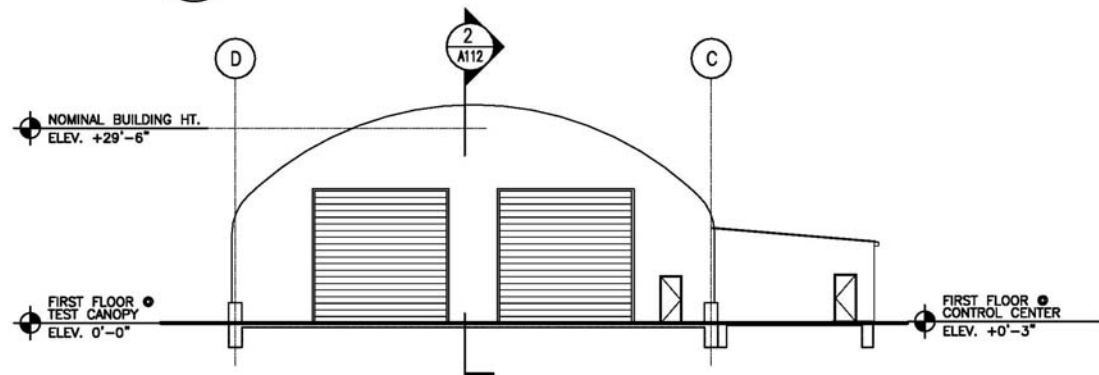




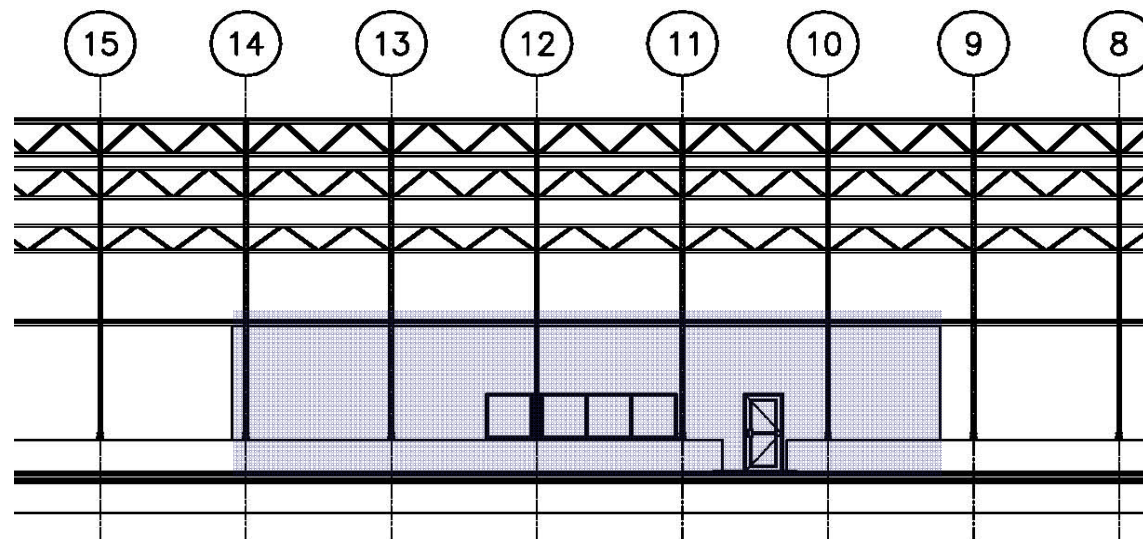
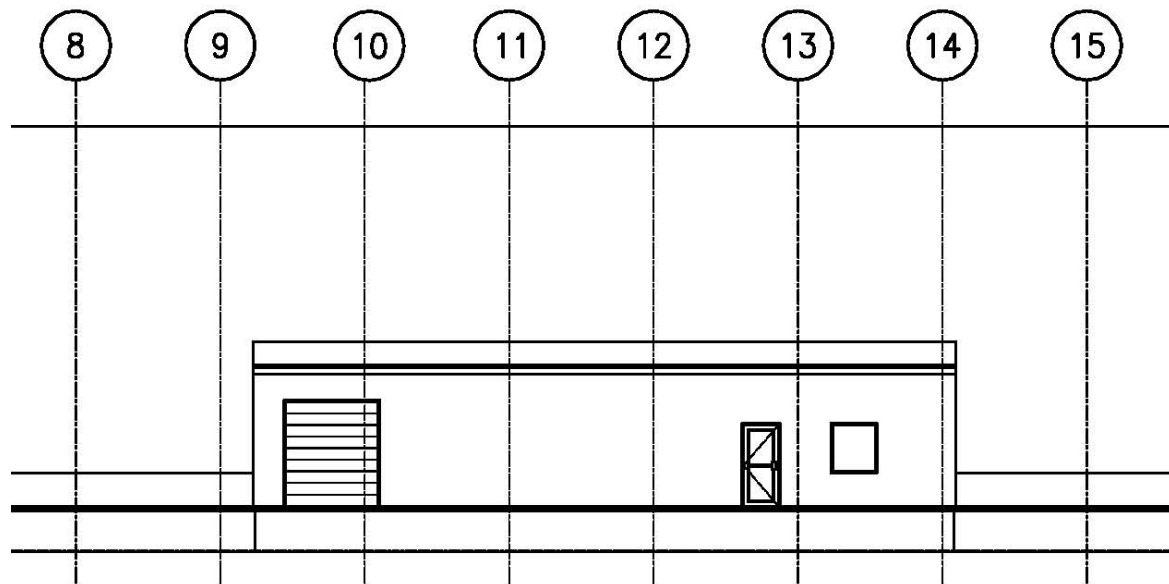
1
 TEST STRUCTURE
 PARTIAL FIRST FLOOR PLAN
 A-111 SCALE: 1/8" = 1'-0"

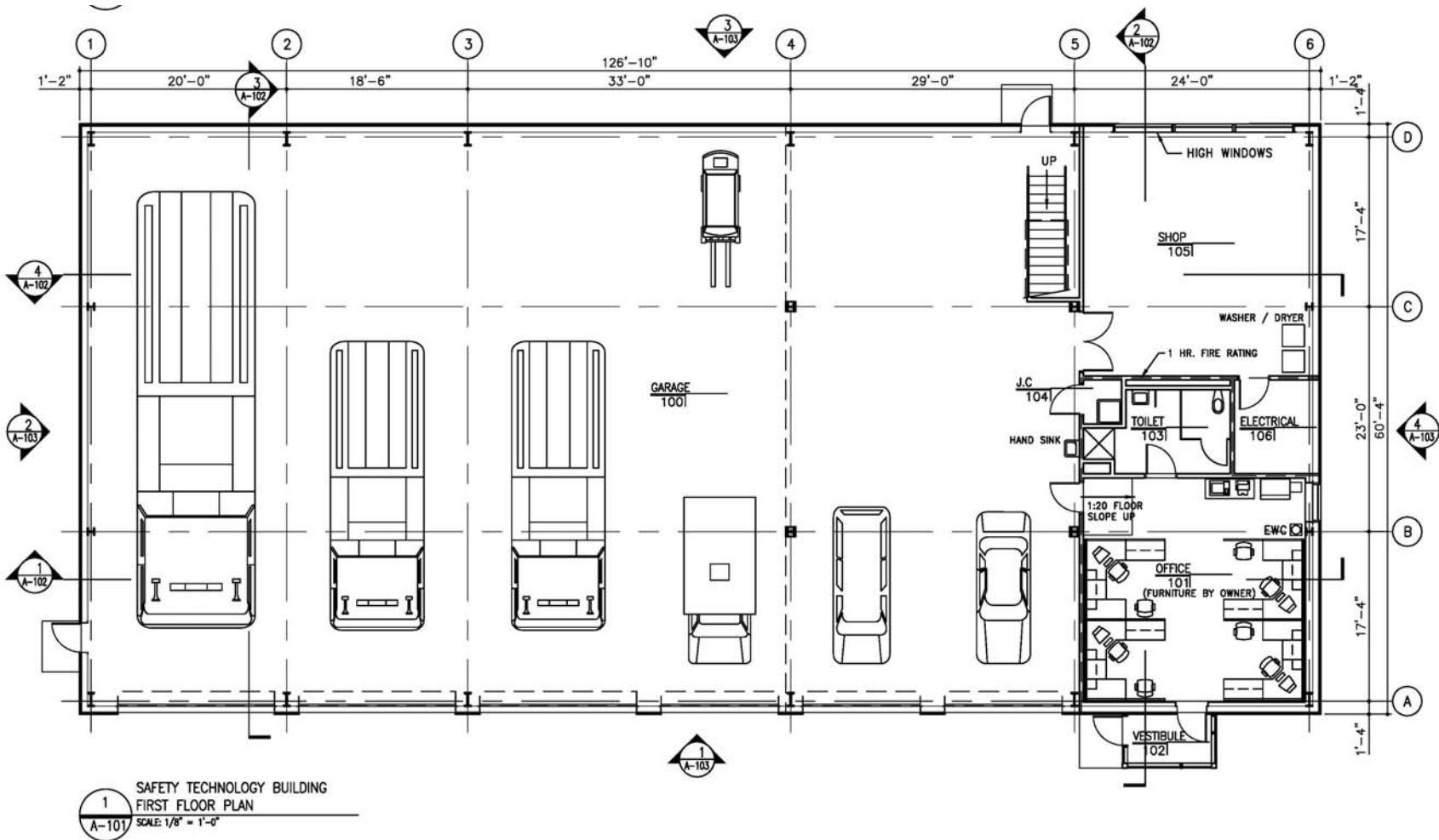


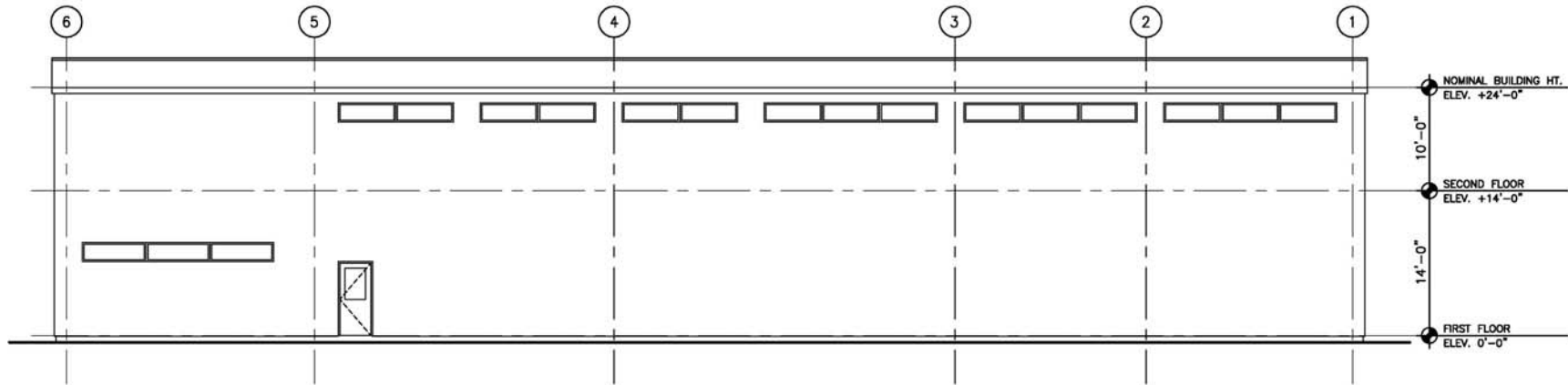
5 SOUTH ELEVATION
A112
SCALE: 1/16" = 1'-0"



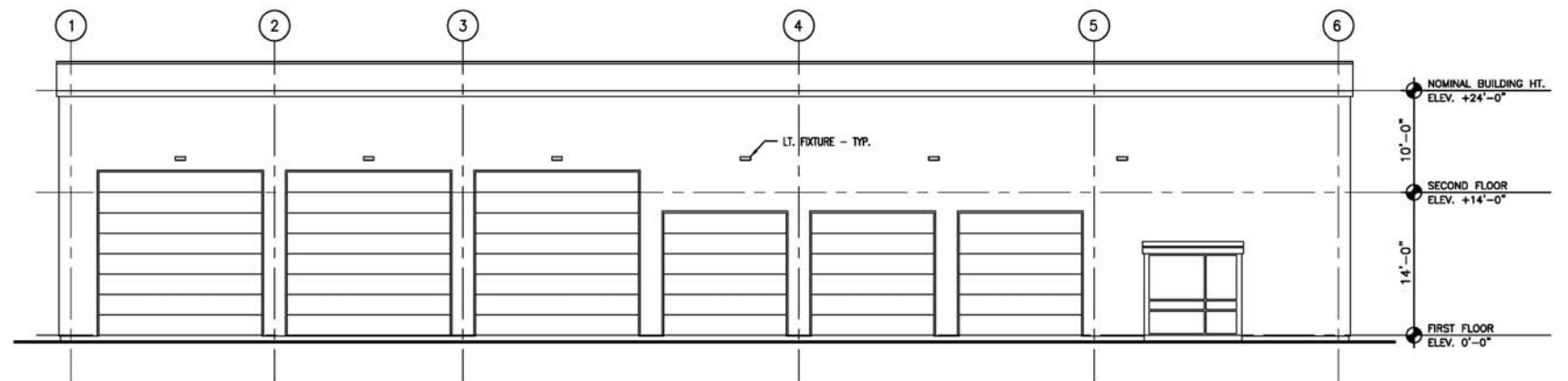
3 NORTH ELEVATION
A112
SCALE: 1/16" = 1'-0"







3 REAR ELEVATION
A103 SCALE: 1/8" = 1'-0"



1 FRONT ELEVATION
A103 SCALE: 1/8" = 1'-0"

**Questions?
Comments?**

Murphy.Flynn@faa.gov

