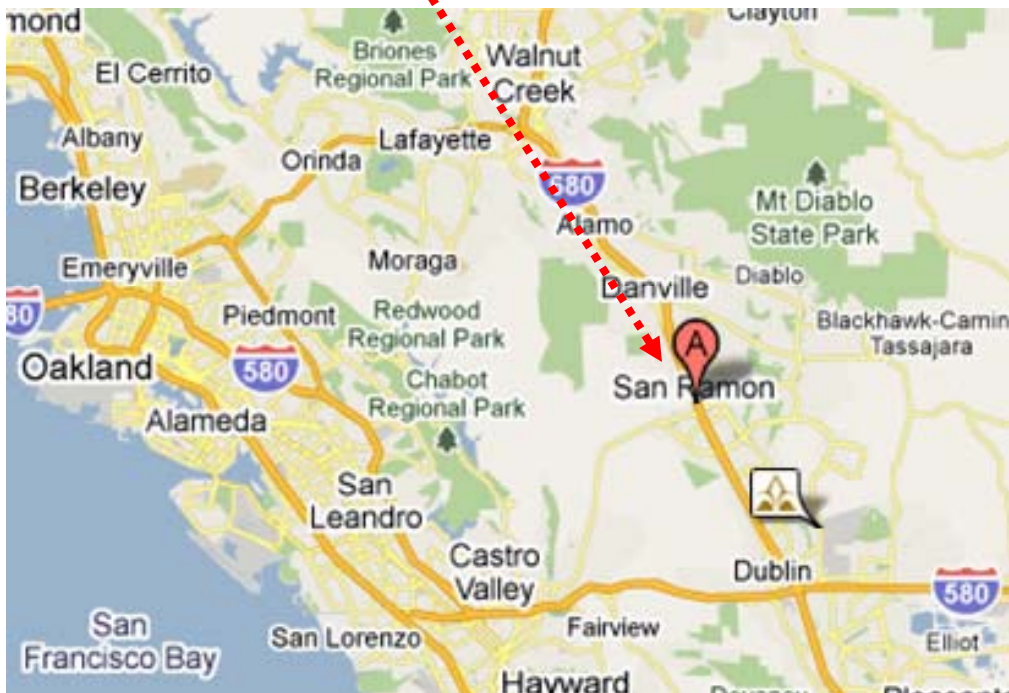


I-5 Stockton CRCP



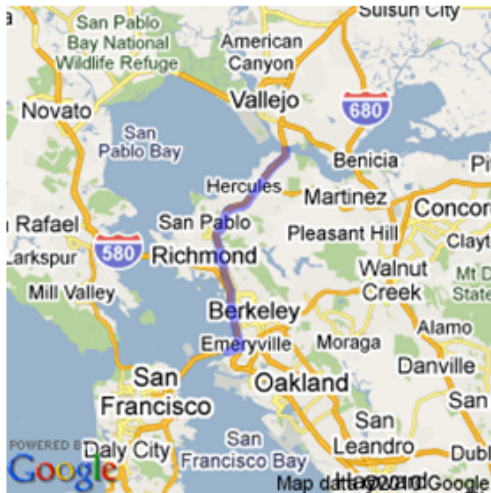
I-680 San Ramon Precast

I-680 San Ramon (Walnut Creek) Precast and CSOL Rehabilitation

- \$70M pavement rehabilitation project
- 12 miles of stretch: two rehab types
 - 6 miles of CSOL: 3 layers HMA (6")
 - 6 miles of Precast: 9" Precast + 6" LCB
- 4 lanes each direction, including 1 HOV
 - about 170,000 ADT (7% trucks)
- Schedule estimate: about 500 working days
 - Nighttime => 2-D Weekend => 1-D weekend => Nighttime
- Precast Type:
 - Post-tensioning precast: Continuous lane-reconstruction
 - Precast (Super slab): Random slab-replacement
- CA4PRS WZ Traffic: TMP & lane closure charts
 - PeMS => data input to CA4PRS

Map Animation Congestion Travel Times Detector Health Download

Animation: Daily ABOUT THIS REPORT



District 4: Bay Area

Active Corridor
 13: Alameda I-80

Daily Monthly

Nov 4, 2009 (Wed)

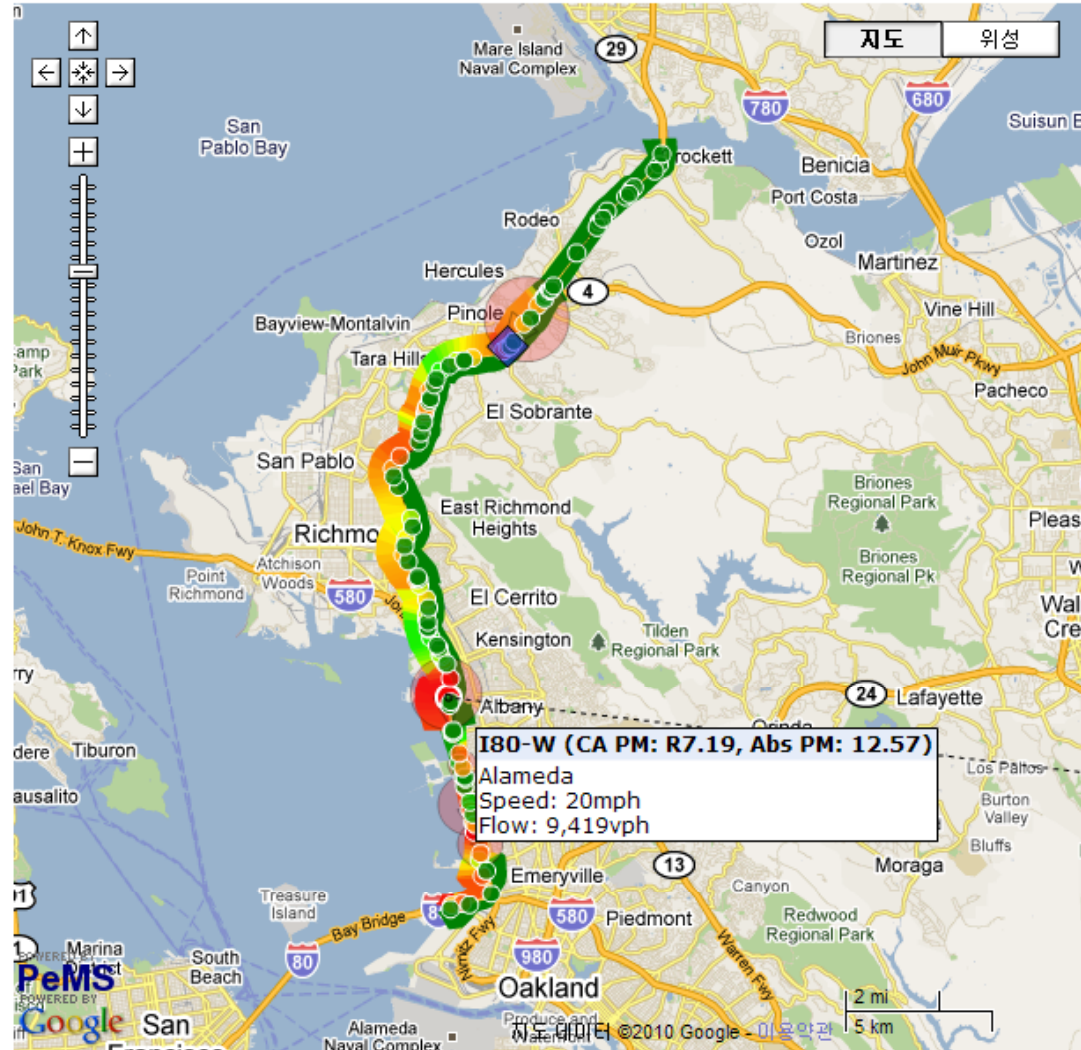
Start Time End Time
 8:00 AM 9:00 AM

Direction of Travel

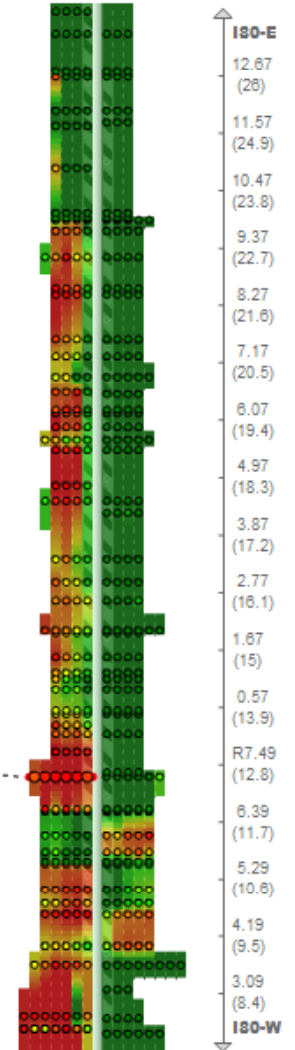
- I80-E
- I80-W

Show

- Speeds
- Bottlenecks
- Incidents
- Volumes
- Stations



I80-W (CA PM: R7.19, Abs PM: 12.57)
 Alameda
 Speed: 20mph
 Flow: 9,419vph



ITS Stations

- Mainline
- HOV
- Ramps
- Other

Count Locations

Station Type

- Mainline
- Ramps

Reported Data

- Traffic Volumes
- Vehicle Classification
- Truck Weights

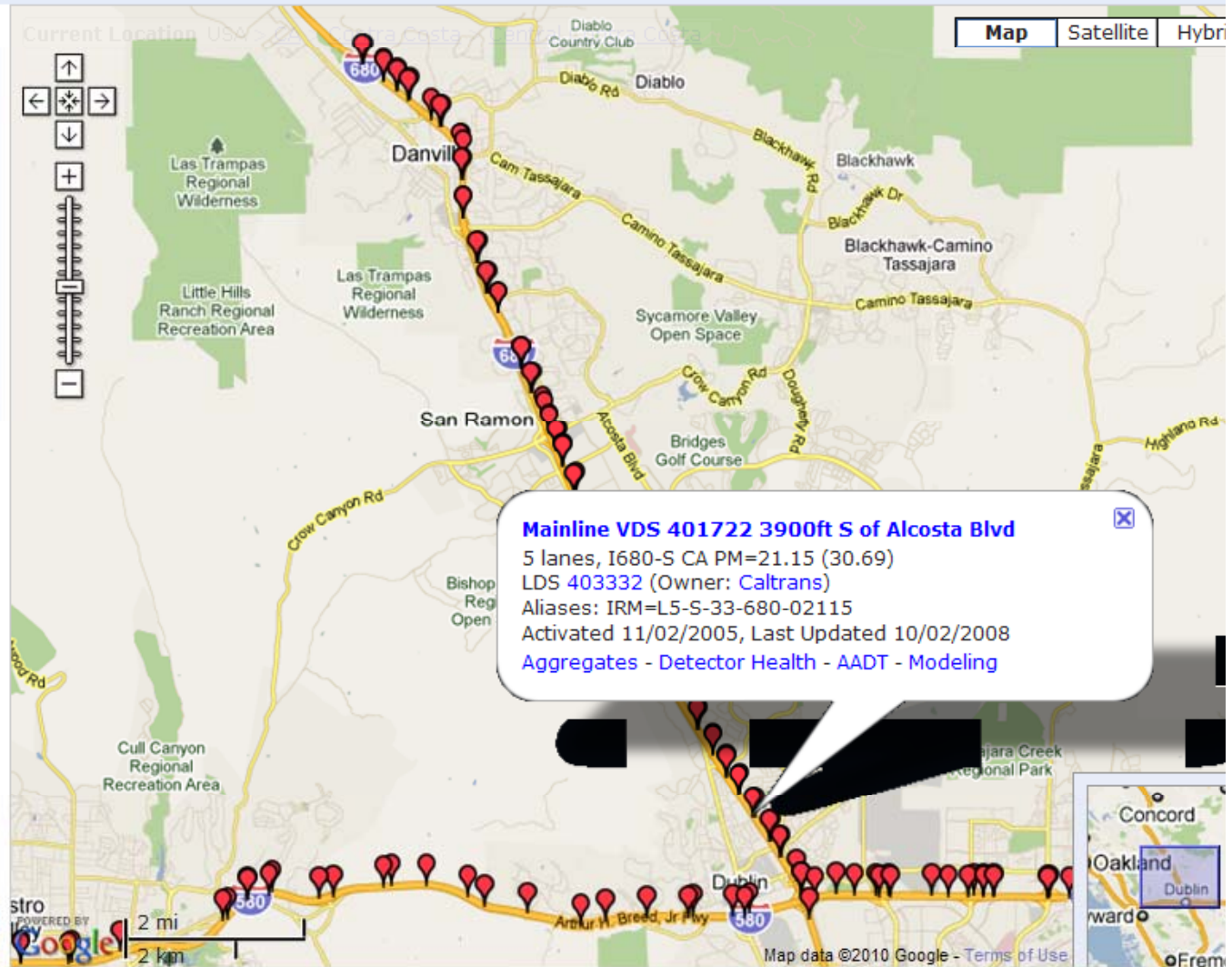
Other

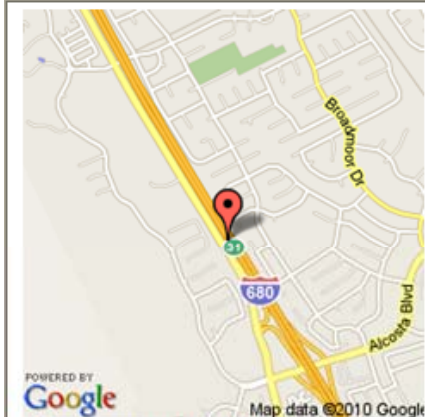
- LDSs
- 511 ETC Readers (D4)

Roadway

- Corridors
- My Routes
- Managed Facilities

Link Status





Configuration Performance Data Quality Events Tools

Performance > Aggregates > Time of Day ABOUT THIS REPORT

From: Aug 1 2010 To: Aug 30 2010
 Min Range: 2 days Max Range: 1 month

Include Days: Su Mo Tu We Th Fr Sa Holidays

Quantity: Flow

Statistics: Mean, Min, Max Mean, Mean+σ, Mean-σ Median, 25%, 75% Discrete Days

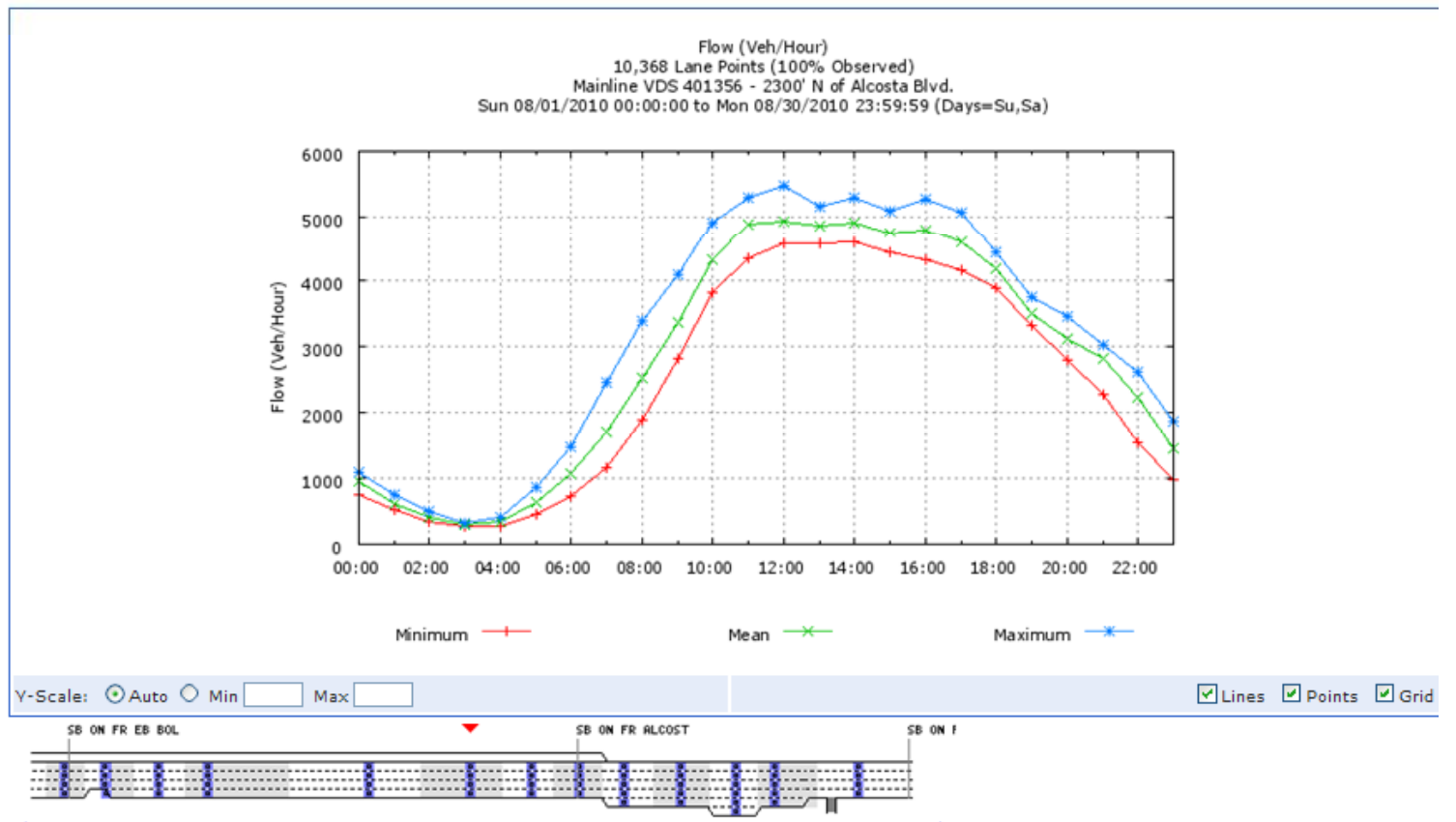
[DRAW PLOT](#) [VIEW TABLE](#) [EXPORT TEXT](#) [EXPORT to XLS](#)

District 4, Contra Costa County, Dublin, I680-S CA PM=0.46 (Abs PM 31.88), LDS 402899 (Owner: Caltrans), Aliases: MS ID DT491, IRM L4-S-28-680-00046, Census Station 49000

Lane Detection			
Lane	Slot	ID	Type
1		402338	Mainline
2		402339	Mainline
3		402340	Mainline
4		402341	Mainline

Data Processing	
Speeds	Estimated
Max Capacity	116.8 Veh/Min (01/06/2009)
AVC	N/A

Diagnostics	
Threshold Set	Urban
Flow = 0, Occ > 0 (Intermittent)	2%
High Flow Threshold	20
High Occ Threshold	.7
High Occupancy (High Val)	20%
Occ = 0; Flow > 0 (Intermittent)	50%



Minimum	Mean	Maximum	# Lane	Points	% Observed
743	958,67	1101	432	100	
521	624,89	739	432	100	
338	416,78	501	432	100	
267	289,22	309	432	100	
262	346,44	418	432	100	
452	630,44	854	432	100	
717	1074,22	1482	432	100	
1168	1698,56	2461	432	100	
1885	2522,89	3394	432	100	
2812	3371,89	4082	432	100	
3825	4317	4898	432	100	
4342	4889,33	5300	432	100	
4558	4939,67	5488	432	100	
4575	4859,33	5164	432	100	
4595	4916,44	5289	432	100	
4423	4746	5100	432	100	
4314	4796,56	5275	432	100	
4150	4585,78	5057	432	100	
3892	4185,33	4437	432	100	
3315	3496,89	3751	432	100	
2800	3114,56	3453	432	100	
2263	2813	3027	432	100	
1541	2237,11	2618	432	100	
982	1450,33	1867	432	100	

Save Webpage

Save in: Desktop

- My Recent Documents
- Desktop
- My Documents
- My Computer
- My Network
- My Documents
- My Computer
- My Network
- LCCA_Paper
- Temp
- i680-SB-Weekend.txt

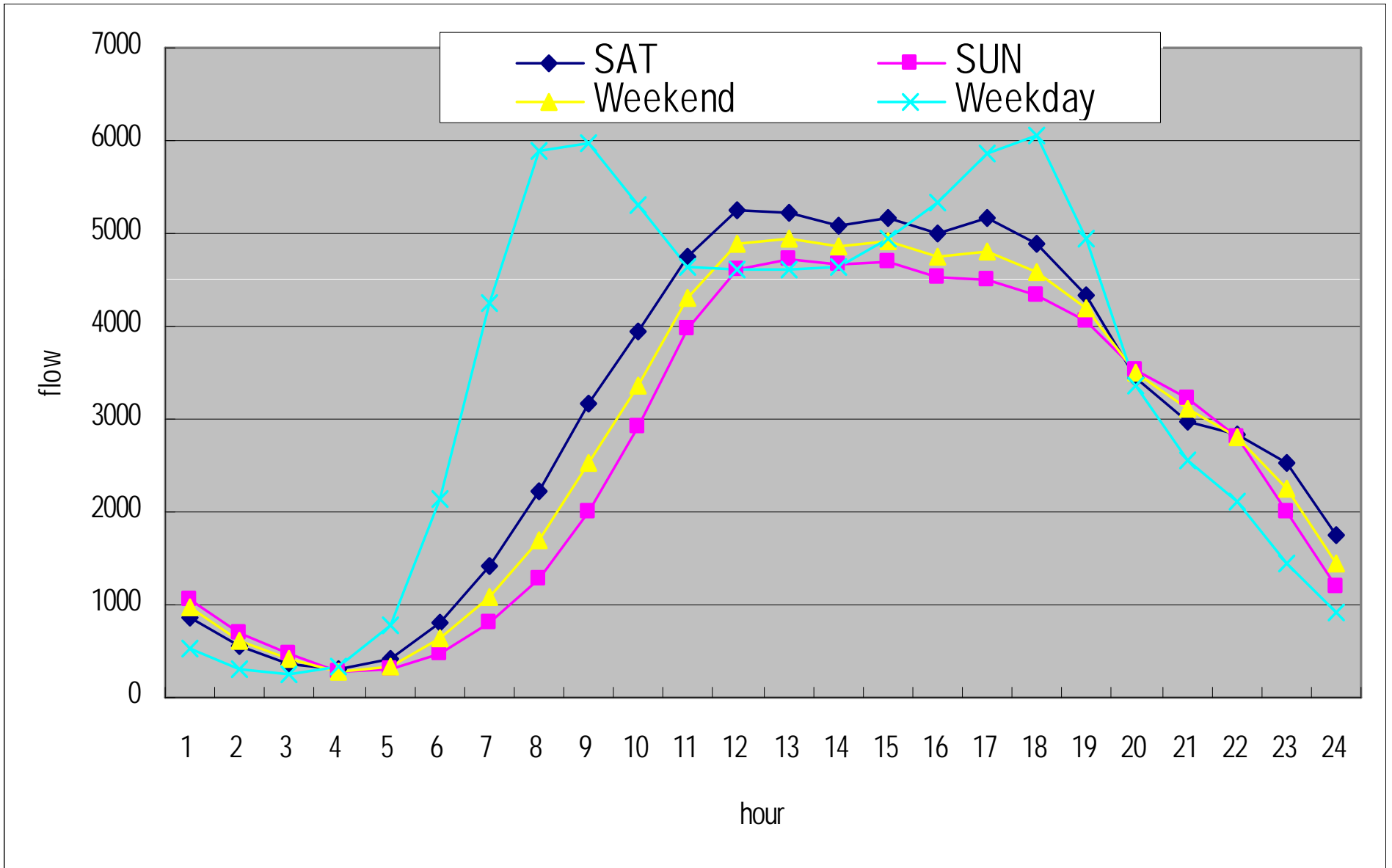
File name: i680-SB-Weekend.txt

Save as type: Text File (*.txt)

Encoding: Korean

Save Cancel

I-680 SB Hourly Traffic Flow



I-5 Stockton CRCP Rehabilitation

- \$42M pavement rehabilitation project
- 2.5 miles of stretch: CRCP (40 year long-life)
 - 4 lanes each direction
 - Scope = 2.5 miles x 4 lanes x 2 dir + aux = 21 lane-mile
 - 13 inch CRCP + 3" ACB
- About 140,000 ADT (25% trucks)
- Contract duration: about 2 years
 - Continuous closure daytime-shift only construction
 - Estimated about 1 year => CA4PRS indicates 2 years
- WZ Traffic
 - 2 lane open with 2 lane closure: too much delay
 - Considering 1 lane couterflow on opposite side