

### SEWARD LEGEND

**AIRPORTS**

- Class A, B, C, D, E, G, H, I, J, K, L, M, N, O, P, Q, R, S, T, U, V, W, X, Y, Z

**AIRPORT DATA**

**ADDITIONAL AIRPORT INFORMATION**

**AIRPORT TRAFFIC SERVICE AND AIRSPACE INFORMATION**

**COMMUNICATION BOXES**

**RADIO AIDS TO NAVIGATION**

**OBSTRUCTIONS**

**MISCELLANEOUS**

**TOPOGRAPHIC INFORMATION**

### SEWARD SECTIONAL AERONAUTICAL CHART SCALE 1:500,000

Federal Aviation Administration

99th EDITION EFFECTIVE TO 0901Z 10 NOV 2016 TO 0901Z 25 MAY 2017

Includes airspace amendments, effective and all other aeronautical data received by 15 SEP 2016

Information on this chart will change. Consult the latest edition of chart changes available every 56 days in the CHART SUPPLEMENT Aeronautical Chart Section series at <http://www.faa.gov/ats>. Also consult appropriate NOTICES TO AIRMEN (NOTAMS) and other flight information publications (LIPs) for the latest changes. Consult Notices to FAA Safety Alerts and Charting Notices at <http://www.faa.gov/publications/chartingnotices>.

Subsets from digital files compiled in accordance with International Cartographic Committee specifications and agreements approved by Department of Defense / Federal Aviation Administration.

Warning: Refer to current change sheets and flight information publications for information when foreign airports.

FAA Product ID: S5EW

NSN 7540114004982

16315

SCXWSEWARD

152° 30' 152° 152° 151° 150° 149° 148° 147° 146° 145° 144° 143° 142° 141°

61° 60° 59° 58° 57°

118 117 116 115 114 113 112 111 110 109 108 107 106 105 104 103 102 101 100 99 98 97 96 95 94 93 92 91 90 89 88 87 86 85 84 83 82 81 80 79 78 77 76 75 74 73 72 71 70 69 68 67 66 65 64 63 62 61 60 59 58 57

152° 30' 152° 152° 151° 150° 149° 148° 147° 146° 145° 144° 143° 142° 141°

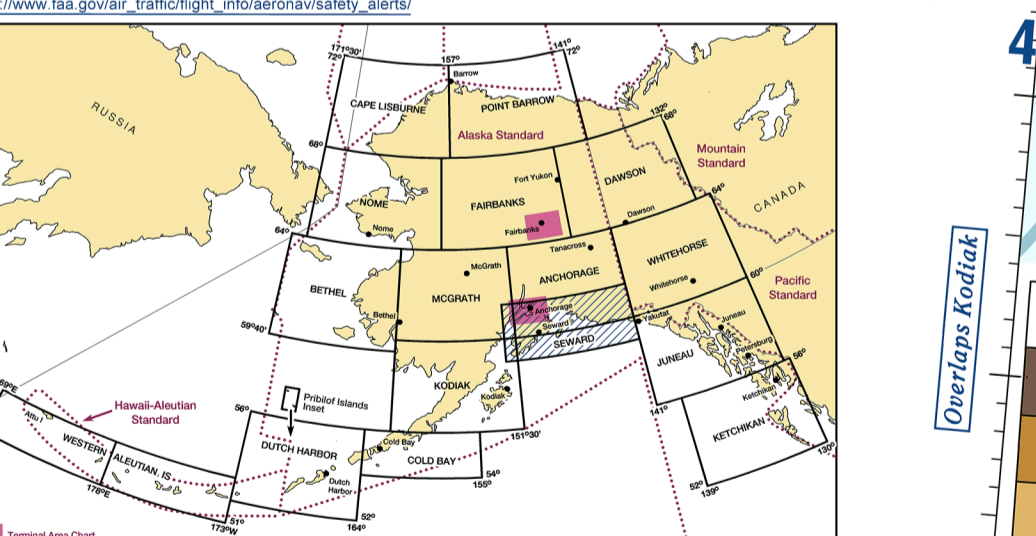
61° 60° 59° 58° 57°

118 117 116 115 114 113 112 111 110 109 108 107 106 105 104 103 102 101 100 99 98 97 96 95 94 93 92 91 90 89 88 87 86 85 84 83 82 81 80 79 78 77 76 75 74 73 72 71 70 69 68 67 66 65 64 63 62 61 60 59 58 57

152° 30' 152° 152° 151° 150° 149° 148° 147° 146° 145° 144° 143° 142° 141°

61° 60° 59° 58° 57°

118 117 116 115 114 113 112 111 110 109 108 107 106 105 104 103 102 101 100 99 98 97 96 95 94 93 92 91 90 89 88 87 86 85 84 83 82 81 80 79 78 77 76 75 74 73 72 71 70 69 68 67 66 65 64 63 62 61 60 59 58 57



CONTOUR INTERVAL 1000 feet

Intermediate contours 500 feet

Actual contours 200 feet

HIGHEST TERMINAL ELEVATION IS 1900' feet

Spot elevation located at 60° 30' N, 149° 40' W

Spot elevation 4254'

Submarine elevation 4254'

1900'

1800'

1700'

1600'

1500'

1400'

1300'

1200'

1100'

1000'

900'

800'

700'

600'

500'

400'

300'

200'

100'

0'

CONVERSION OF ELEVATION

FEET METERS

1000 914.4

2000 1828.8

3000 2743.2

4000 3657.6

5000 4572.0

6000 5486.4

7000 6400.8

8000 7315.2

9000 8229.6

10000 9144.0

11000 10058.4

12000 10972.8

13000 11887.2

14000 12801.6

15000 13716.0

16000 14630.4

17000 15544.8

18000 16459.2

19000 17373.6

20000 18288.0

152° 30' 152° 152° 151° 150° 149° 148° 147° 146° 145° 144° 143° 142° 141°

61° 60° 59° 58° 57°

118 117 116 115 114 113 112 111 110 109 108 107 106 105 104 103 102 101 100 99 98 97 96 95 94 93 92 91 90 89 88 87 86 85 84 83 82 81 80 79 78 77 76 75 74 73 72 71 70 69 68 67 66 65 64 63 62 61 60 59 58 57

### FOR FLIGHTS AT AND BELOW 4100 MSL SEE ANCHORAGE VFR TERMINAL AREA CHART

EXAMPLES OF CLASS C ALTITUDES

50 70 30

ANCHORAGE TERMINAL AREA

Plots are encouraged to use the Anchorage VFR Terminal Area Chart for flights at or below 4100 MSL.

### EXTENSIVE HELICOPTER TRAFFIC TO AND FROM THE AREA IS ANTICIPATED

ON APPROACH TO ANCHORAGE VFR TERMINAL AREA CHART

See NOTAMs/Supplements for Class G airspace.

### CAUTION: Severe turbulence may occur over rough terrain. See AEA.

ANCHORAGE VFR TERMINAL AREA CHART

See NOTAMs/Supplements for Class G airspace.

### CAUTION: This chart is primarily designed for VFR navigational purposes and does not support the presence of all power lines and telecommunication lines, terrain or obstacles which may be encountered below reasonable and safe altitudes.

ANCHORAGE VFR TERMINAL AREA CHART

See NOTAMs/Supplements for Class G airspace.

### MILITARY TRAINING ROUTES (MTRs)

All IR and VFR MTRs are shown, and may extend from the surface covers. Only the lower portion of each MTR is shown, and the exact disposition is depicted - except for MTRs which are not shown.

Some MTRs are subject to change every 90 days, and current status for each MTR is indicated by the MTR symbol.

Due to a change in the alignment of the charted route, the MTR symbol is shown with a red arrow pointing to the new alignment.

Red arrows refer to Area Planning (AP) Military Training Routes North and South America for current status.

### CONTROL TOWER FREQUENCIES ON SEWARD SECTIONAL CHART

Information for each tower is based on the latest Operational Flight Data. The primary VFR tower frequency for each tower is listed. Other frequencies are listed as secondary frequencies.

TOWER	OPERATES	TOWER	INFO	ASAP
ANCHORAGE	24/7	ANCHORAGE	118.1	118.1
ANCHORAGE	24/7	ANCHORAGE	122.1	122.1
ANCHORAGE	24/7	ANCHORAGE	133.1	133.1
ANCHORAGE	24/7	ANCHORAGE	144.1	144.1
ANCHORAGE	24/7	ANCHORAGE	155.1	155.1

### SPECIAL USE AIRSPACE ON SEWARD SECTIONAL CHART

Information for each special use airspace is based on the latest Operational Flight Data. The primary frequency for each special use airspace is listed. Other frequencies are listed as secondary frequencies.

CLASS	ACTIVE	TIME OF USE	CONTROLLING AGENCY	FREQUENCIES
CLASS C	24/7	24/7	ANCHORAGE	118.1, 122.1, 133.1, 144.1, 155.1
CLASS E	24/7	24/7	ANCHORAGE	118.1, 122.1, 133.1, 144.1, 155.1
CLASS G	24/7	24/7	ANCHORAGE	118.1, 122.1, 133.1, 144.1, 155.1

### CONTROL AREA 1487L

5500 MSL

CONTROL AREA 1487L

5500 MSL

### CONTROL AREA 1487L

5500 MSL

CONTROL AREA 1487L

5500 MSL

### CONTROL AREA 1487L

5500 MSL

CONTROL AREA 1487L

5500 MSL

### CONTROL AREA 1487L

5500 MSL

CONTROL AREA 1487L

5500 MSL

### CONTROL AREA 1487L

5500 MSL

CONTROL AREA 1487L

5500 MSL

### CONTROL AREA 1487L

5500 MSL

CONTROL AREA 1487L

5500 MSL

### CONTROL AREA 1487L

5500 MSL

CONTROL AREA 1487L

5500 MSL

### CONTROL AREA 1487L

5500 MSL

CONTROL AREA 1487L

5500 MSL

### CONTROL AREA 1487L

5500 MSL

CONTROL AREA 1487L

5500 MSL

### CONTROL AREA 1487L

5500 MSL

CONTROL AREA 1487L

5500 MSL

### CONTROL AREA 1487L

5500 MSL

CONTROL AREA 1487L

5500 MSL

### CONTROL AREA 1487L

5500 MSL

CONTROL AREA 1487L

5500 MSL

### CONTROL AREA 1487L

5500 MSL

CONTROL AREA 1487L

5500 MSL

### CONTROL AREA 1487L

5500 MSL

CONTROL AREA 1487L

5500 MSL

### CONTROL AREA 1487L

5500 MSL

CONTROL AREA 1487L

5500 MSL

### CONTROL AREA 1487L

5500 MSL

CONTROL AREA 1487L

5500 MSL

### CONTROL AREA 1487L

5500 MSL

CONTROL AREA 1487L

5500 MSL

### CONTROL AREA 1487L

5500 MSL

CONTROL AREA 1487L

5500 MSL

### CONTROL AREA 1487L

5500 MSL

CONTROL AREA 1487L

5500 MSL

### CONTROL AREA 1487L

5500 MSL

CONTROL AREA 1487L

5500 MSL

### CONTROL AREA 1487L

5500 MSL

CONTROL AREA 1487L

5500 MSL

### CONTROL AREA 1487L

5500 MSL

CONTROL AREA 1487L

5500 MSL

### CONTROL AREA 1487L

5500 MSL

CONTROL AREA 1487L

5500 MSL

### CONTROL AREA 1487L

5500 MSL

CONTROL AREA 1487L

5500 MSL

### CONTROL AREA 1487L

5500 MSL

CONTROL AREA 1487L

5500 MSL

### CONTROL AREA 1487L

5500 MSL

CONTROL AREA 1487L

5500 MSL

### CONTROL AREA 1487L

5500 MSL

CONTROL AREA 1487L

5500 MSL

### CONTROL AREA 1487L

5500 MSL

CONTROL AREA 1487L

5500 MSL

### CONTROL AREA 1487L

5500 MSL

CONTROL AREA 1487L

5500 MSL

### CONTROL AREA 1487L

5500 MSL

CONTROL AREA 1487L

5500 MSL

### CONTROL AREA 1487L

5500 MSL

CONTROL AREA 1487L

5500 MSL

### CONTROL AREA 1487L

5500 MSL

CONTROL AREA 1487L

5500 MSL

### CONTROL AREA 1487L

5500 MSL

CONTROL AREA 1487L

5500 MSL

### CONTROL AREA 1487L

5500 MSL

CONTROL AREA 1487L

5500 MSL

### CONTROL AREA 1487L

5500 MSL

CONTROL AREA 1487L

5500 MSL