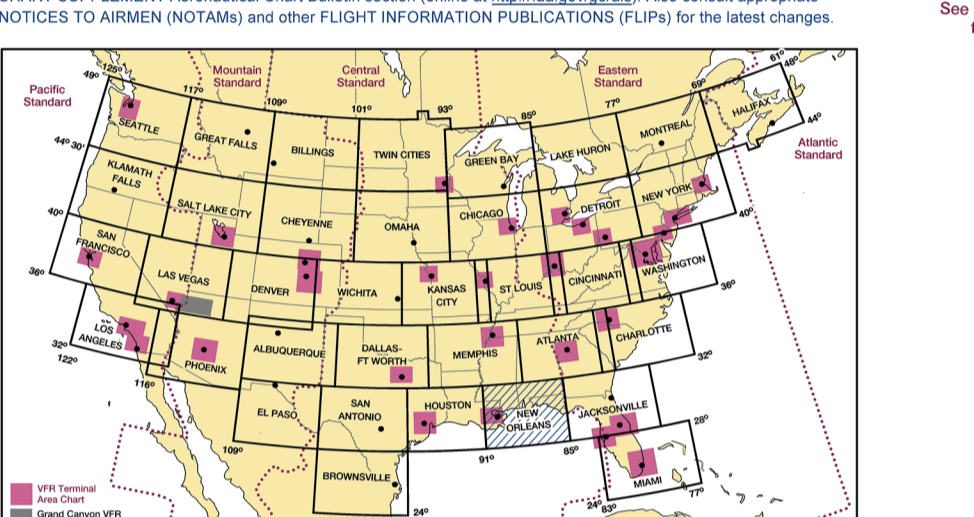


NEW ORLEANS

LEGEND
AERIAL PHOTOGRAPHY
ADDITIONAL AIRPORT INFORMATION
AIRPORT TRAFFIC INFORMATION
COMMUNICATION BOARDS
INDICATES TO NAVIGATION
OBSTRUCTIONS
MISCELLANEOUS
SYMBOLIC INFORMATION

NEW ORLEANS SECTIONAL
SECTIONAL AERONAUTICAL CHART SCALE 1:500,000

98th EDITION EFFECTIVE 0901Z 26 MAY 2016 TO 0901Z 10 NOV 2016
Includes airspace amendments effective 26 MAY 2016 and all other aeronautical data received by 31 MAR 2016



FAA Product ID: SNO
NSN 7541014 100189
SECTION: NEW ORLEANS

NOTICE TO AIRMEN
This chart is published in accordance with the provisions of the Federal Aviation Regulations, Part 101, and is subject to the provisions of the Federal Aviation Regulations, Part 101.1, which requires that the user of this chart be advised that the information is not to be used for flight planning or navigation purposes.

Table with columns: CLASS, CLASS E, TSEA, and SELECTED APPROACH CENTER FREQUENCIES. Lists various frequencies and their corresponding classes.

Table with columns: CLASS, CLASS E, TSEA, and SELECTED APPROACH CENTER FREQUENCIES. Lists various frequencies and their corresponding classes.

Table with columns: CLASS, CLASS E, TSEA, and SELECTED APPROACH CENTER FREQUENCIES. Lists various frequencies and their corresponding classes.



SPECIAL AIR TRAFFIC RULE, F.A.R. PART 93
EGLIN/PARASO TERMINAL AREA, FLORIDA
OVERLIES ALL EGLIN/PARASO RESTRICTED AREAS AND SPECIAL AIR TRAFFIC RULE, PART 93.000-10 INTERMEDIATE HORIZONTAL SURFACE TO BUT NOT INCLUDING FL 180 CONTACT EGLIN APPROACH CONTROL 1.8.1 RADAR ADVISORY SVC AVIAL DESTINT AMPT