

DETROIT LEGEND

SYMBOLS

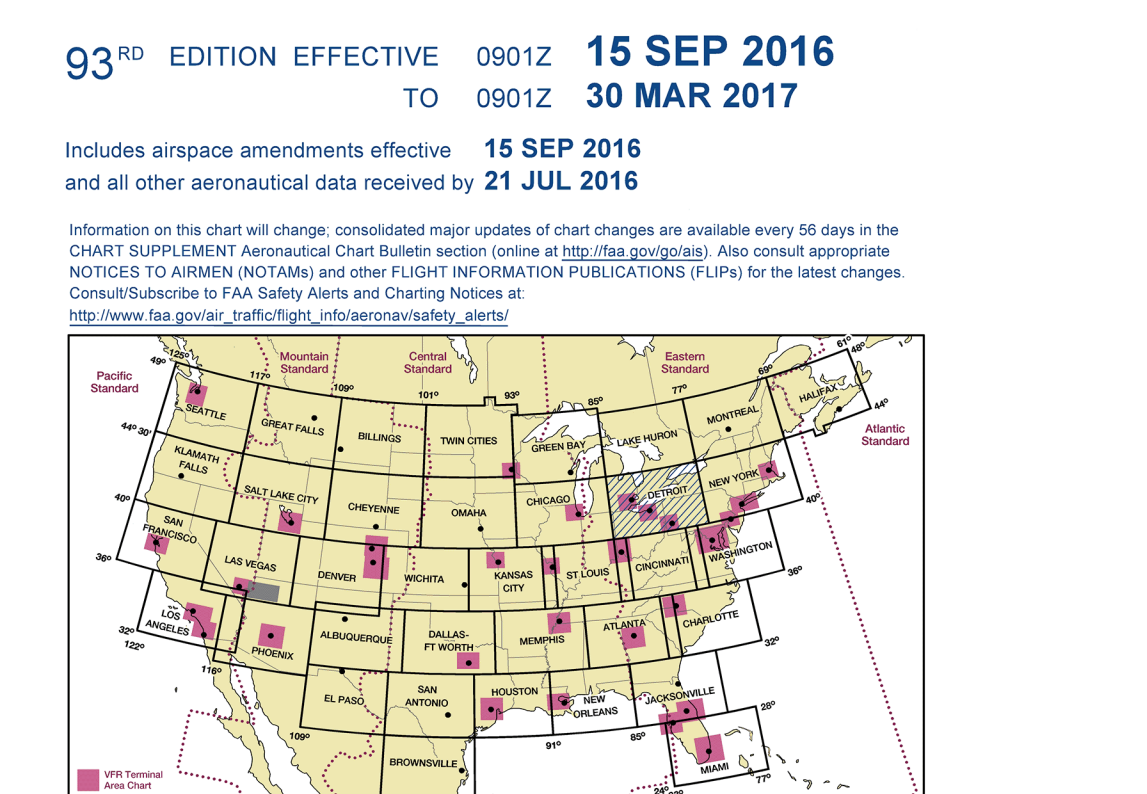
- Class E Airspace
- Class G Airspace
- Class D Airspace
- Obstructions
- Communication
- Navigation
- Miscellaneous
- Topographic

DETROIT SECTIONAL
SECTIONAL AERONAUTICAL CHART SCALE 1:500,000

Federal Aviation Administration

93rd EDITION EFFECTIVE 15 SEP 2016 TO 30 MAR 2017

Includes airspace amendments effective 15 SEP 2016 and all other amendments effective 31 JUL 2016.



FAA Product ID: S3CET
NSM 7641014100143
162556

SECURITY

UNCLASSIFIED//FOR OFFICIAL USE ONLY

CONTROL TOWER FREQUENCIES ON DETROIT SECTIONAL CHART

CLASS	FREQ	TYPE	USE	CLASS	STATUS
Class E	118.1	Unicom	1800-2000	Class E	Active
Class G	118.1	Unicom	1800-2000	Class G	Active

CLASS E, CLASS G, TERA, AND SELECTED APPROACH CENTER FREQUENCIES

CLASS	FREQ	TYPE	USE	CLASS	STATUS
Class E	118.1	Unicom	1800-2000	Class E	Active
Class G	118.1	Unicom	1800-2000	Class G	Active

EXAMPLES OF CLASS E ALTITUDES

70 - Ceiling in hundreds of feet MSL
30 - Floor in hundreds of feet MSL

EXAMPLES OF CLASS G ALTITUDES

70 - Ceiling in hundreds of feet MSL
30 - Floor in hundreds of feet MSL

CONVERSION OF ELEVATIONS

FEET	METERS
1	0.30
2	0.61
3	0.91
4	1.22
5	1.52
6	1.83
7	2.13
8	2.44
9	2.74
10	3.05
11	3.35
12	3.66
13	3.96
14	4.27
15	4.57
16	4.88
17	5.18
18	5.49
19	5.79
20	6.10
21	6.40
22	6.71
23	7.01
24	7.32
25	7.62
26	7.93
27	8.23
28	8.53
29	8.84
30	9.14
31	9.45
32	9.75
33	10.06
34	10.36
35	10.67
36	10.97
37	11.28
38	11.58
39	11.89
40	12.19
41	12.50
42	12.80
43	13.11
44	13.41
45	13.72
46	14.02
47	14.33
48	14.63
49	14.94
50	15.24
51	15.55
52	15.85
53	16.16
54	16.46
55	16.77
56	17.07
57	17.38
58	17.68
59	17.99
60	18.29
61	18.60
62	18.90
63	19.21
64	19.51
65	19.82
66	20.12
67	20.43
68	20.73
69	21.04
70	21.34
71	21.65
72	21.95
73	22.26
74	22.56
75	22.87
76	23.17
77	23.48
78	23.78
79	24.09
80	24.39
81	24.70
82	25.00
83	25.31
84	25.61
85	25.92
86	26.22
87	26.53
88	26.83
89	27.14
90	27.44
91	27.75
92	28.05
93	28.36
94	28.66
95	28.97
96	29.27
97	29.58
98	29.88
99	30.19
100	30.49

SPECIAL USE AIRSPACE ON DETROIT SECTIONAL CHART

CLASS	FREQ	TYPE	USE	CLASS	STATUS
Class E	118.1	Unicom	1800-2000	Class E	Active
Class G	118.1	Unicom	1800-2000	Class G	Active

NOTE: REFER TO COMMUNICATION PROCEDURES FOR AIRPORT INFORMATION

NAME	LOCATION	STATUS	TYPE	USE	CLASS	STATUS
DETROIT	DETROIT, MI	Active	Class E	1800-2000	Class E	Active
DETROIT	DETROIT, MI	Active	Class G	1800-2000	Class G	Active

NOTE: REFER TO COMMUNICATION PROCEDURES FOR AIRPORT INFORMATION

NAME	LOCATION	STATUS	TYPE	USE	CLASS	STATUS
DETROIT	DETROIT, MI	Active	Class E	1800-2000	Class E	Active
DETROIT	DETROIT, MI	Active	Class G	1800-2000	Class G	Active

NOTE: REFER TO COMMUNICATION PROCEDURES FOR AIRPORT INFORMATION

NAME	LOCATION	STATUS	TYPE	USE	CLASS	STATUS
DETROIT	DETROIT, MI	Active	Class E	1800-2000	Class E	Active
DETROIT	DETROIT, MI	Active	Class G	1800-2000	Class G	Active

NOTE: REFER TO COMMUNICATION PROCEDURES FOR AIRPORT INFORMATION

NAME	LOCATION	STATUS	TYPE	USE	CLASS	STATUS
DETROIT	DETROIT, MI	Active	Class E	1800-2000	Class E	Active
DETROIT	DETROIT, MI	Active	Class G	1800-2000	Class G	Active

NOTE: REFER TO COMMUNICATION PROCEDURES FOR AIRPORT INFORMATION

NAME	LOCATION	STATUS	TYPE	USE	CLASS	STATUS
DETROIT	DETROIT, MI	Active	Class E	1800-2000	Class E	Active
DETROIT	DETROIT, MI	Active	Class G	1800-2000	Class G	Active