



**LEGEND**

**AIRPORTS**

**ADDITIONAL AIRPORT INFORMATION**

**COMMUNICATION DEVICES**

**NAVIGATIONAL AIDS**

**OBSTRUCTIONS**

**TERMINATING OBSTRUCTIONS**

**MOBILE SERVICES**

**CONVERSION OF ELEVATIONS**

**CONTOUR INTERVAL: 100 feet**

**HIGHEST TERRAIN ELEVATION: 2020 feet**

**Spot elevation: 20 feet**

**Approximate elevation: 40 feet**

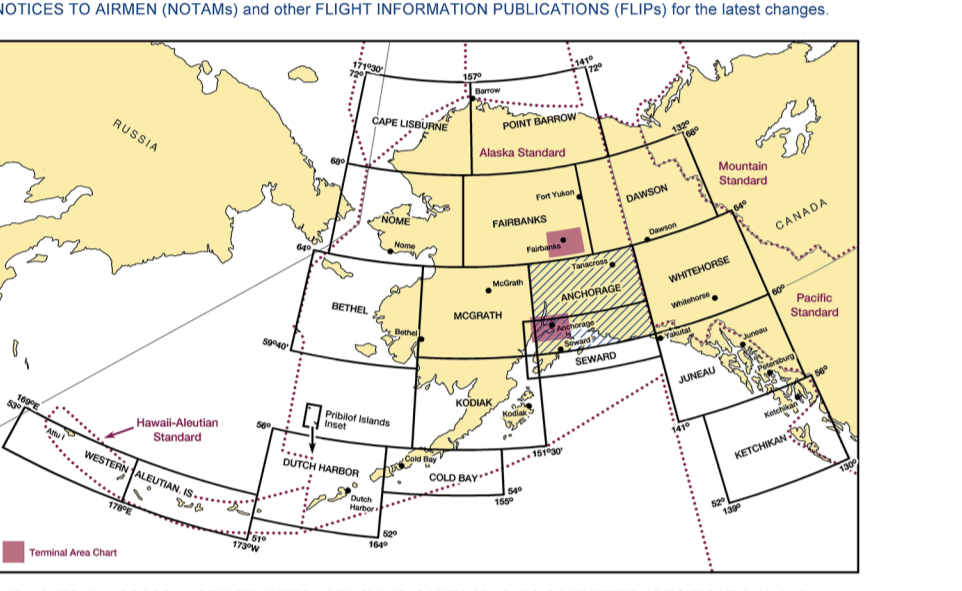
**ANCHORAGE SECTIONAL**

**SECTIONAL AERONAUTICAL CHART SCALE 1:50,000**

**Federal Aviation Administration**

98th EDITION EFFECTIVE 0801Z 26 MAY 2016 TO 0801Z 10 NOV 2016

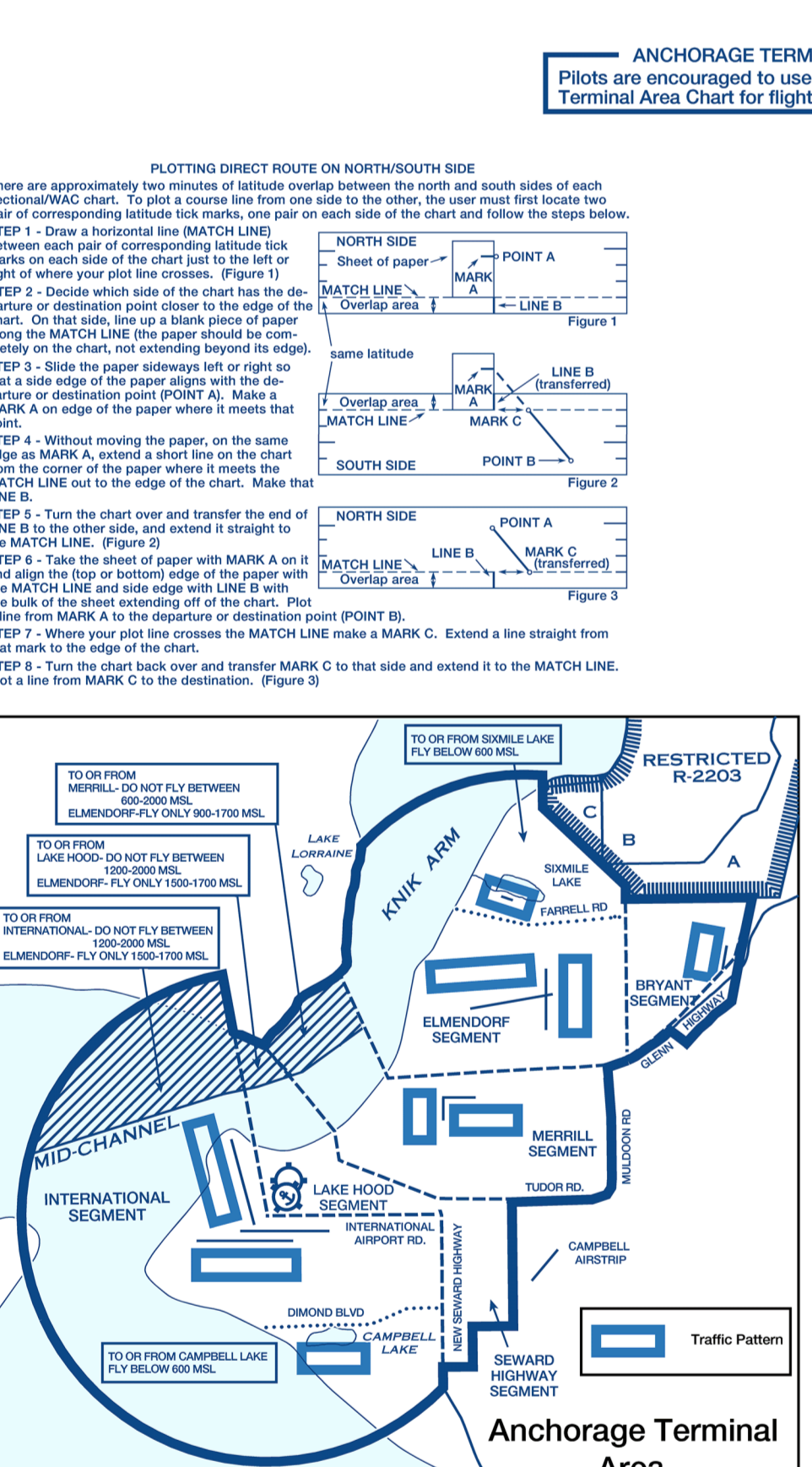
Includes airspace amendments effective 26 MAY 2016 and all other aeronautical data received by 31 MAR 2016



FAA Product ID: SANC

NSN 7841014100172

SECNOANCHORGE



**ANCHORAGE ALASKA TERMINAL AREA RULES**

1. This chart is published for the use of pilots and other personnel who are responsible for the safe operation of aircraft in the Anchorage Terminal Area.

2. The Terminal Area is defined as the area within 5 statute miles of the Anchorage International Airport (PAER) and the Anchorage Executive Airport (PA22).

3. The Terminal Area is divided into several classes of airspace, including Class E, Class G, and Class D.

4. Pilots are encouraged to use the Anchorage Terminal Area Chart for all flights within the Terminal Area.

5. Pilots are responsible for obtaining the latest edition of this chart and for understanding the chart's content and usage.

**ANCHORAGE**

**CONTROL THREE PROCEDURES IN ANCHORAGE SECTIONAL CHART**

CLASS	CLASS	CLASS	CLASS	CLASS	CLASS
CLASS E	CLASS G	CLASS D	CLASS C	CLASS B	CLASS A
1000-1400 MSL	1000-1400 MSL	1000-1400 MSL	1000-1400 MSL	1000-1400 MSL	1000-1400 MSL