

HELIOPORT CHART
LOS ANGELES
LEGEND

Small text and symbols for various chart elements like airports, heliports, and navigation aids.

LOS ANGELES HELICOPTER
HELICOPTER ROUTE CHART SCALE 1:25,000
Federal Aviation Administration

11th EDITION EFFECTIVE 0901Z 23 JUN 2016
Chart effective for use in navigation upon publication of the next edition. See Dates of Latest Editions.

Includes airspace amendments effective **26 MAY 2016** and all other aeronautical data received by **28 APR 2016**

Information on chart changes, including a map of the United States showing the location of the Los Angeles area.

PUBLISHED IN ACCORDANCE WITH INTERAGENCY AIR CARTOGRAPHIC COMMITTEE SPECIFICATIONS AND AGREEMENTS APPROVED BY DEPARTMENT OF DEFENSE AND FEDERAL AVIATION ADMINISTRATION

FAA Product ID: HELLA
NSN 764 1014 04434
NSN 764 1014 04434

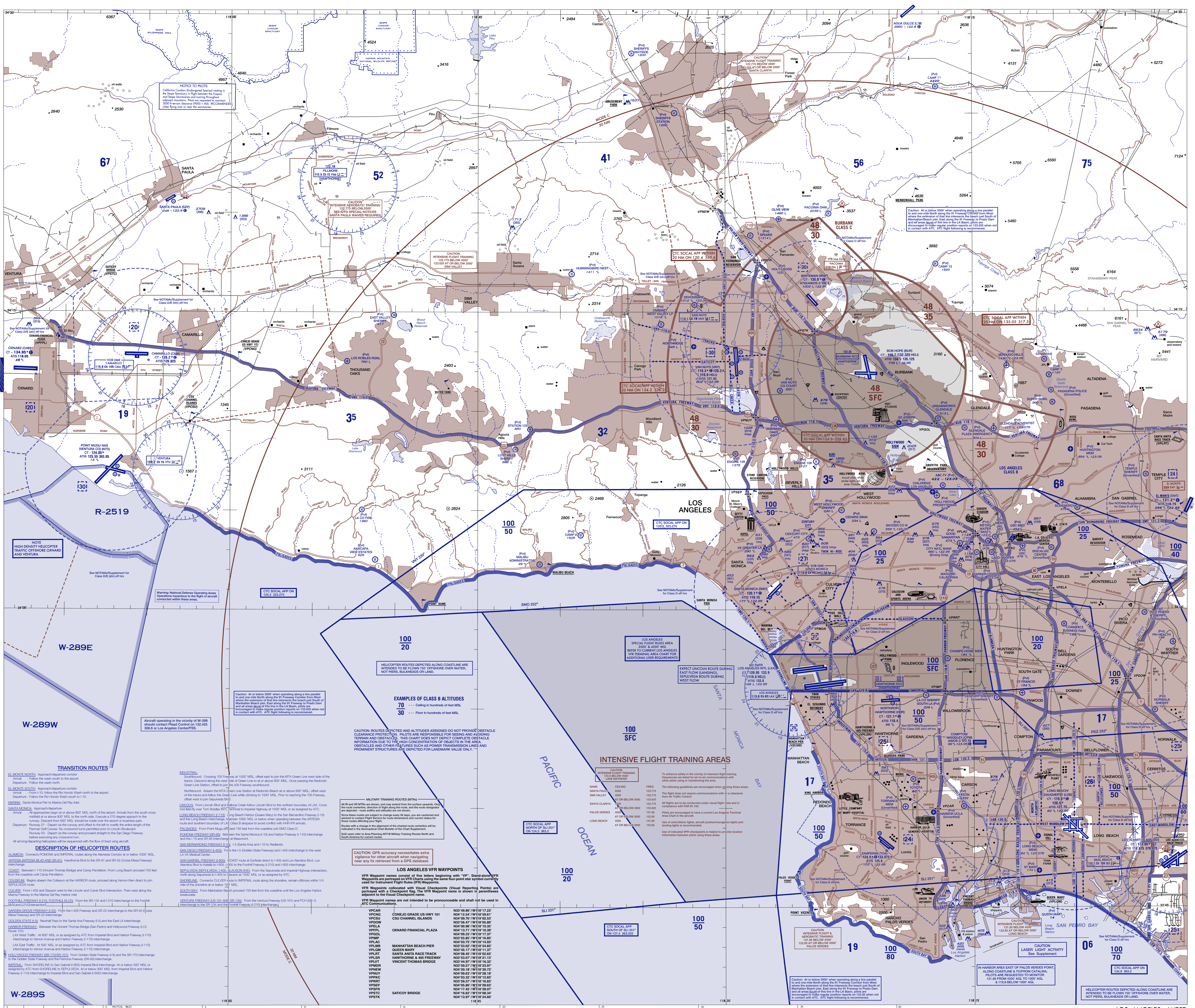
CONTROL TOWER FREQUENCIES ON LOS ANGELES HELICOPTER ROUTE CHART - WEST
Table with columns: CONTROL TOWER, OPERATES, FREQ, MSL, AGL, ATIS.

CLASS B, CLASS C, TISA, AND SELECTED APPROACH CONTROL FREQUENCIES
Table with columns: FACILITY, FREQUENCIES, SERVICE AVAILABILITY.

SPECIAL USE AIRSPACE ON LOS ANGELES HELICOPTER ROUTE CHART - WEST
Table with columns: NAME, ALTITUDE, TIME OF USE, CONTROLLING AGENCY, FREQUENCIES.

EMERGENCY OPERATIONS FREQUENCIES
Table with columns: AGENCY, FREQUENCIES, SERVICE AVAILABILITY.

U.S. AIRPORTS, HELIPOINTS, AND SELECTED APPROACH CONTROL FREQUENCIES
Table with columns: NAME, ALTITUDE, TIME OF USE, CONTROLLING AGENCY, FREQUENCIES.



W-289W
W-289W
W-289W

TRANSITION ROUTES
W-289W
W-289W

DESCRIPTION OF HELICOPTER ROUTES
W-289W
W-289W

W-289S
W-289S
W-289S

EXAMPLES OF CLASS B ALTITUDES
70
30
70

MILITARY TRAINING ROUTES (MTR)
W-289W
W-289W

LOS ANGELES VFR WAYPOINTS
W-289W
W-289W

LOS ANGELES VFR WAYPOINTS
W-289W
W-289W

INTENSIVE FLIGHT TRAINING AREAS
W-289W
W-289W

LOS ANGELES VFR WAYPOINTS
W-289W
W-289W

LOS ANGELES VFR WAYPOINTS
W-289W
W-289W

LOS ANGELES VFR WAYPOINTS
W-289W
W-289W

LOS ANGELES VFR WAYPOINTS
W-289W
W-289W

LOS ANGELES VFR WAYPOINTS
W-289W
W-289W

LOS ANGELES VFR WAYPOINTS
W-289W
W-289W

LOS ANGELES VFR WAYPOINTS
W-289W
W-289W

LOS ANGELES VFR WAYPOINTS
W-289W
W-289W

LOS ANGELES VFR WAYPOINTS
W-289W
W-289W

LOS ANGELES VFR WAYPOINTS
W-289W
W-289W

LOS ANGELES VFR WAYPOINTS
W-289W
W-289W

LOS ANGELES VFR WAYPOINTS
W-289W
W-289W

LOS ANGELES VFR WAYPOINTS
W-289W
W-289W

LOS ANGELES VFR WAYPOINTS
W-289W
W-289W

LOS ANGELES VFR WAYPOINTS
W-289W
W-289W

LOS ANGELES VFR WAYPOINTS
W-289W
W-289W

LOS ANGELES VFR WAYPOINTS
W-289W
W-289W

LOS ANGELES VFR WAYPOINTS
W-289W
W-289W

LOS ANGELES VFR WAYPOINTS
W-289W
W-289W

TRANSITION ROUTES

- COVINA**
Arrival - Riverside Freeway - Enter downwind middle over the railroad tracks. Left traffic for Runway 25. Right traffic for Runway 07.
Departure - Runway 25 - Avoid overflying trees at the west end of the airport field resting area. Climb clear of trees. 45 degree departure to the Riverside Freeway. Runway 07 - 45 degree departure to the Riverside Freeway 07.
- EL MONTE NORTH** Approach/Departure corridor
Arrival - Follow the south side to the airport.
Departure - Follow the north side.
- EL MONTE SOUTH** Approach/Departure corridor
Arrival - From 110, follow the Rio Hondo wash north to the airport.
Departure - Follow the Rio Hondo wash south to 110.
- FULLERTON MUNICIPAL AIRPORT**
Arrival - (P-V) NE for both runway operations, follow railroad tracks (SR-90) for Runway 24 operations, use Highway routing for Runway 08 operations, use clear routing.
Departure - (P-V) NE for north-south runway operations, turn west over railroad tracks. Cross a point east of Beach Blvd at 400' MSL. Make NE turn over Beach Blvd. Continue west over railroad tracks before making any other turns. (SR-90) by south on appropriate route until over either freeway (5 or 91) before making any turns. Cross the freeways at 600' MSL.

DESCRIPTION OF HELICOPTER ROUTES

- ANTONIA AVENUE (SR-104/204/304)** - Hawthorne Blvd to the SR-91 and SR-95 (Cota Mesa Freeway) Interchange.
- COVINA** - Between 110 (Woodrow Thomas Bridge) and Camp Pendleton. From Long Beach proceed 750 feet from the Covina and Camp Pendleton.
- COSTA MESA (SR-56)** - Between Newport Beach and Anacapa Freeway (SR-91).
- EAST SAN DIEGO (SR-56/5)** - Between Los Alamitos Blvd and Camp Pendleton.
- FOOTBALL FIELD (SR-52)** - From the SR-134 and SR-210 Interchange to the Football Field and SR-210 Intersection.
- LAKE MATHERS (SR-125)** - From the I-405 and SR-22 Interchange to the SR-55 (Cota Mesa Freeway) and SR-22 Interchange.
- ORANGE (SR-40)** - Between I-5 (Santa Ana Freeway) and SR-60 (Plomona Freeway).
- PLANTATION (SR-60)** - Between the Santa Monica (SR-10) and Harbor Freeway (I-10) Interchange and SR-60 (Plomona Freeway) Interchange.
- RIVERSIDE (SR-91)** - From the SR-91 and SR-55 (Cota Mesa Freeway) to the SR-91 and I-10 (San Bernardino Freeway) Interchange.
- SAN ANTONIO (SR-52)** - From the SR-91 and SR-210 Interchange to the SR-91 and SR-210 Interchange.
- SAN BERNARDINO (SR-15)** - I-5 (Santa Ana) and I-10 to Redlands.
- SAN GABRIEL (SR-60)** - COVAT route at Surfside direct to I-405 and Los Alamitos Blvd. Loc. Alamo Blvd to Redlands to I-405. I-405 to the Football Field and SR-210 and SR-22 Interchange.
- SANTA ANITA (SR-65)** - From the East LA Interchange to the SR-115 and I-405 Interchange south of El Toro NCAAS.

CAUTION: ROUTES DEPICTED AND ALTITUDES ASSIGNED DO NOT PROVIDE OBSTACLE CLEARANCE PROTECTION. PILOTS ARE RESPONSIBLE FOR SEEING AND AVOIDING TERRAIN AND OBSTACLES. THIS CHART DOES NOT DEPICT COMPLETE OBSTACLE INFORMATION TO THE HIGH CONCENTRATION OF OBSTACLES IN THE AREA. OBSTACLES AND OTHER FEATURES SUCH AS POWER TRANSMISSION LINES AND PROMINENT STRUCTURES ARE DEPICTED FOLLOWING VISUAL ONLY.

CONTROL TOWER FREQUENCIES ON LOS ANGELES HELICOPTER ROUTE CHART - EAST

Airport with control towers are indicated on the face of the chart by the letters CT followed by the primary VFR local control frequency. Information for each tower is listed in the table below. Obstacles shown on the chart are shown in the table below. The primary VFR local control frequencies are listed. An asterisk (*) indicates the primary tower frequency is shared with a secondary tower. All ATIS frequencies are listed in the table below. ATIS frequencies are listed in the table below. ATIS frequencies are listed in the table below. ATIS frequencies are listed in the table below.

CONTROL TOWER	OPERATES	VFR FREQ	OMN FREQ	ATIS
CHINO	0600-2000	118.1	118.1	118.1
CHINO C/NO	0600-2000	118.1	118.1	118.1
CHINO C/NO	0600-2000	118.1	118.1	118.1
CHINO C/NO	0600-2000	118.1	118.1	118.1
CHINO C/NO	0600-2000	118.1	118.1	118.1
CHINO C/NO	0600-2000	118.1	118.1	118.1
CHINO C/NO	0600-2000	118.1	118.1	118.1
CHINO C/NO	0600-2000	118.1	118.1	118.1
CHINO C/NO	0600-2000	118.1	118.1	118.1
CHINO C/NO	0600-2000	118.1	118.1	118.1

CLASS B, CLASS C, TRSA, AND SELECTED APPROACH PROCEDURES

FACILITY	FREQUENCIES	SERVICE AVAILABILITY
LOS ANGELES CLASS B	119.7, 124.1, 124.3, 127.6, 128.2, 134.1, 251.9, 251.95, 252.0, 252.05, 252.1, 252.15, 252.2, 252.25, 252.3, 252.35, 252.4, 252.45, 252.5, 252.55, 252.6, 252.65, 252.7, 252.75, 252.8, 252.85, 252.9, 252.95, 253.0, 253.05, 253.1, 253.15, 253.2, 253.25, 253.3, 253.35, 253.4, 253.45, 253.5, 253.55, 253.6, 253.65, 253.7, 253.75, 253.8, 253.85, 253.9, 253.95, 254.0, 254.05, 254.1, 254.15, 254.2, 254.25, 254.3, 254.35, 254.4, 254.45, 254.5, 254.55, 254.6, 254.65, 254.7, 254.75, 254.8, 254.85, 254.9, 254.95, 255.0, 255.05, 255.1, 255.15, 255.2, 255.25, 255.3, 255.35, 255.4, 255.45, 255.5, 255.55, 255.6, 255.65, 255.7, 255.75, 255.8, 255.85, 255.9, 255.95, 256.0, 256.05, 256.1, 256.15, 256.2, 256.25, 256.3, 256.35, 256.4, 256.45, 256.5, 256.55, 256.6, 256.65, 256.7, 256.75, 256.8, 256.85, 256.9, 256.95, 257.0, 257.05, 257.1, 257.15, 257.2, 257.25, 257.3, 257.35, 257.4, 257.45, 257.5, 257.55, 257.6, 257.65, 257.7, 257.75, 257.8, 257.85, 257.9, 257.95, 258.0, 258.05, 258.1, 258.15, 258.2, 258.25, 258.3, 258.35, 258.4, 258.45, 258.5, 258.55, 258.6, 258.65, 258.7, 258.75, 258.8, 258.85, 258.9, 258.95, 259.0, 259.05, 259.1, 259.15, 259.2, 259.25, 259.3, 259.35, 259.4, 259.45, 259.5, 259.55, 259.6, 259.65, 259.7, 259.75, 259.8, 259.85, 259.9, 259.95, 260.0, 260.05, 260.1, 260.15, 260.2, 260.25, 260.3, 260.35, 260.4, 260.45, 260.5, 260.55, 260.6, 260.65, 260.7, 260.75, 260.8, 260.85, 260.9, 260.95, 261.0, 261.05, 261.1, 261.15, 261.2, 261.25, 261.3, 261.35, 261.4, 261.45, 261.5, 261.55, 261.6, 261.65, 261.7, 261.75, 261.8, 261.85, 261.9, 261.95, 262.0, 262.05, 262.1, 262.15, 262.2, 262.25, 262.3, 262.35, 262.4, 262.45, 262.5, 262.55, 262.6, 262.65, 262.7, 262.75, 262.8, 262.85, 262.9, 262.95, 263.0, 263.05, 263.1, 263.15, 263.2, 263.25, 263.3, 263.35, 263.4, 263.45, 263.5, 263.55, 263.6, 263.65, 263.7, 263.75, 263.8, 263.85, 263.9, 263.95, 264.0, 264.05, 264.1, 264.15, 264.2, 264.25, 264.3, 264.35, 264.4, 264.45, 264.5, 264.55, 264.6, 264.65, 264.7, 264.75, 264.8, 264.85, 264.9, 264.95, 265.0, 265.05, 265.1, 265.15, 265.2, 265.25, 265.3, 265.35, 265.4, 265.45, 265.5, 265.55, 265.6, 265.65, 265.7, 265.75, 265.8, 265.85, 265.9, 265.95, 266.0, 266.05, 266.1, 266.15, 266.2, 266.25, 266.3, 266.35, 266.4, 266.45, 266.5, 266.55, 266.6, 266.65, 266.7, 266.75, 266.8, 266.85, 266.9, 266.95, 267.0, 267.05, 267.1, 267.15, 267.2, 267.25, 267.3, 267.35, 267.4, 267.45, 267.5, 267.55, 267.6, 267.65, 267.7, 267.75, 267.8, 267.85, 267.9, 267.95, 268.0, 268.05, 268.1, 268.15, 268.2, 268.25, 268.3, 268.35, 268.4, 268.45, 268.5, 268.55, 268.6, 268.65, 268.7, 268.75, 268.8, 268.85, 268.9, 268.95, 269.0, 269.05, 269.1, 269.15, 269.2, 269.25, 269.3, 269.35, 269.4, 269.45, 269.5, 269.55, 269.6, 269.65, 269.7, 269.75, 269.8, 269.85, 269.9, 269.95, 270.0, 270.05, 270.1, 270.15, 270.2, 270.25, 270.3, 270.35, 270.4, 270.45, 270.5, 270.55, 270.6, 270.65, 270.7, 270.75, 270.8, 270.85, 270.9, 270.95, 271.0, 271.05, 271.1, 271.15, 271.2, 271.25, 271.3, 271.35, 271.4, 271.45, 271.5, 271.55, 271.6, 271.65, 271.7, 271.75, 271.8, 271.85, 271.9, 271.95, 272.0, 272.05, 272.1, 272.15, 272.2, 272.25, 272.3, 272.35, 272.4, 272.45, 272.5, 272.55, 272.6, 272.65, 272.7, 272.75, 272.8, 272.85, 272.9, 272.95, 273.0, 273.05, 273.1, 273.15, 273.2, 273.25, 273.3, 273.35, 273.4, 273.45, 273.5, 273.55, 273.6, 273.65, 273.7, 273.75, 273.8, 273.85, 273.9, 273.95, 274.0, 274.05, 274.1, 274.15, 274.2, 274.25, 274.3, 274.35, 274.4, 274.45, 274.5, 274.55, 274.6, 274.65, 274.7, 274.75, 274.8, 274.85, 274.9, 274.95, 275.0, 275.05, 275.1, 275.15, 275.2, 275.25, 275.3, 275.35, 275.4, 275.45, 275.5, 275.55, 275.6, 275.65, 275.7, 275.75, 275.8, 275.85, 275.9, 275.95, 276.0, 276.05, 276.1, 276.15, 276.2, 276.25, 276.3, 276.35, 276.4, 276.45, 276.5, 276.55, 276.6, 276.65, 276.7, 276.75, 276.8, 276.85, 276.9, 276.95, 277.0, 277.05, 277.1, 277.15, 277.2, 277.25, 277.3, 277.35, 277.4, 277.45, 277.5, 277.55, 277.6, 277.65, 277.7, 277.75, 277.8, 277.85, 277.9, 277.95, 278.0, 278.05, 278.1, 278.15, 278.2, 278.25, 278.3, 278.35, 278.4, 278.45, 278.5, 278.55, 278.6, 278.65, 278.7, 278.75, 278.8, 278.85, 278.9, 278.95, 279.0, 279.05, 279.1, 279.15, 279.2, 279.25, 279.3, 279.35, 279.4, 279.45, 279.5, 279.55, 279.6, 279.65, 279.7, 279.75, 279.8, 279.85, 279.9, 279.95, 280.0, 280.05, 280.1, 280.15, 280.2, 280.25, 280.3, 280.35, 280.4, 280.45, 280.5, 280.55, 280.6, 280.65, 280.7, 280.75, 280.8, 280.85, 280.9, 280.95, 281.0, 281.05, 281.1, 281.15, 281.2, 281.25, 281.3, 281.35, 281.4, 281.45, 281.5, 281.55, 281.6, 281.65, 281.7, 281.75, 281.8, 281.85, 281.9, 281.95, 282.0, 282.05, 282.1, 282.15, 282.2, 282.25, 282.3, 282.35, 282.4, 282.45, 282.5, 282.55, 282.6, 282.65, 282.7, 282.75, 282.8, 282.85, 282.9, 282.95, 283.0, 283.05, 283.1, 283.15, 283.2, 283.25, 283.3, 283.35, 283.4, 283.45, 283.5, 283.55, 283.6, 283.65, 283.7, 283.75, 283.8, 283.85, 283.9, 283.95, 284.0, 284.05, 284.1, 284.15, 284.2, 284.25, 284.3, 284.35, 284.4, 284.45, 284.5, 284.55, 284.6, 284.65, 284.7, 284.75, 284.8, 284.85, 284.9, 284.95, 285.0, 285.05, 285.1, 285.15, 285.2, 285.25, 285.3, 285.35, 285.4, 285.45, 285.5, 285.55, 285.6, 285.65, 285.7, 285.75, 285.8, 285.85, 285.9, 285.95, 286.0, 286.05, 286.1, 286.15, 286.2, 286.25, 286.3, 286.35, 286.4, 286.45, 286.5, 286.55, 286.6, 286.65, 286.7, 286.75, 286.8, 286.85, 286.9, 286.95, 287.0, 287.05, 287.1, 287.15, 287.2, 287.25, 287.3, 287.35, 287.4, 287.45, 287.5, 287.55, 287.6, 287.65, 287.7, 287.75, 287.8, 287.85, 287.9, 287.95, 288.0, 288.05, 288.1, 288.15, 288.2, 288.25, 288.3, 288.35, 288.4, 288.45, 288.5, 288.55, 288.6, 288.65, 288.7, 288.75, 288.8, 288.85, 288.9, 288.95, 289.0, 289.05, 289.1, 289.15, 289.2, 289.25, 289.3, 289.35, 289.4, 289.45, 289.5, 289.55, 289.6, 289.65, 289.7, 289.75, 289.8, 289.85, 289.9, 289.95, 290.0, 290.05, 290.1, 290.15, 290.2, 290.25, 290.3, 290.35, 290.4, 290.45, 290.5, 290.55, 290.6, 290.65, 290.7, 290.75, 290.8, 290.85, 290.9, 290.95, 291.0, 291.05, 291.1, 291.15, 291.2, 291.25, 291.3, 291.35, 291.4, 291.45, 291.5, 291.55, 291.6, 291.65, 291.7, 291.75, 291.8, 291.85, 291.9, 291.95, 292.0, 292.05, 292.1, 292.15, 292.2, 292.25, 292.3, 292.35, 292.4, 292.45, 292.5, 292.55, 292.6, 292.65, 292.7, 292.75, 292.8, 292.85, 292.9, 292.95, 293.0, 293.05, 293.1, 293.15, 293.2, 293.25, 293.3, 293.35, 293.4, 293.45, 293.5, 293.55, 293.6, 293.65, 293.7, 293.75, 293.8, 293.85, 293.9, 293.95, 294.0, 294.05, 294.1, 294.15, 294.2, 294.25, 294.3, 294.35, 294.4, 294.45, 294.5, 294.55, 294.6, 294.65, 294.7, 294.75, 294.8, 294.85, 294.9, 294.95, 295.0, 295.05, 295.1, 295.15, 295.2, 295.25, 295.3, 295.35, 295.4, 295.45, 295.5, 295.55, 295.6, 295.65, 295.7, 295.75, 295.8, 295.85, 295.9, 295.95, 296.0, 296.05, 296.1, 296.15, 296.2, 296.25, 296.3, 296.35, 296.4, 296.45, 296.5, 296.55, 296.6, 296.65, 296.7, 296.75, 296.8, 296.85, 296.9, 296.95, 297.0, 297.05, 297.1, 297.15, 297.2, 297.25, 297.3, 297.35, 297.4, 297.45, 297.5, 297.55, 297.6, 297.65, 297.7, 297.75, 297.8, 297.85, 297.9, 297.95, 298.0, 298.05, 298.1, 298.15, 298.2, 298.25, 298.3, 298.35, 298.4, 298.45, 298.5, 298.55, 298.6, 298.65, 298.7, 298.75, 298.8, 298.85, 298.9, 298.95, 299.0, 299.05, 299.1, 299.15, 299.2, 299.25, 299.3, 299.35, 299.4, 299.45, 299.5, 299.55, 299.6, 299.65, 299.7, 299.75, 299.8, 299.85, 299.9, 299.95, 300.0, 300.05, 300.1, 300.15, 300.2, 300.25, 300.3, 300.35, 300.4, 300.45, 300.5, 300.55, 300.6, 300.65, 300.7, 300.75, 300.8, 300.85, 300.9, 300.95, 301.0, 301.05, 301.1, 301.15, 301.2, 301.25, 301.3, 301.35, 301.4, 301.45, 301.5, 301.55, 301.6, 301.65, 301.7, 301.75, 301.8, 301.85, 301.9, 301.95, 302.0, 302.05, 302.1, 302.15, 302.2, 302.25, 302.3, 302.35, 302.4, 302.45, 302.5, 302.55, 302.6, 302.65, 302.7, 302.75, 302.8, 302.85, 302.9, 302.95, 303.0, 303.05, 303.1, 303.15, 303.2, 303.25, 303.3, 303.35, 303.4, 303.45, 303.5, 303.55, 303.6, 303.65, 303.7, 303.75, 303.8, 303.85, 303.9, 303.95, 304.0, 304.05, 304.1, 304.15, 304.2, 304.25, 304.3, 304.35, 304.4, 304.45, 304.5, 304.55, 304.6, 304.65, 304.7, 304.75, 304.8, 304.85, 304.9, 304.95, 305.0, 305.05, 305.1, 305.15, 305.2, 305.25, 305.3, 305.35, 305.4, 305.45, 305.5, 305.55, 305.6, 305.65, 305.7, 305.75, 305.8, 305.85, 305.9, 305.95, 306.0, 306.05, 306.1, 306.15, 306.2, 306.25, 306.3, 306.35, 306.4, 306.45, 306.5, 306.55, 306.6, 306.65, 306.7, 306.75, 306.8, 306.85, 306.9, 306.95, 307.0, 307.05, 307.1, 307.15, 307.2, 307.25, 307.3, 307.35, 307.4, 307.45, 307.5, 307.55, 307.6, 307.65, 307.7, 307.75, 307.8, 307.85, 307.9, 307.95, 308.0, 308.05, 308.1, 308.15, 308.2, 308.25, 308.3, 308.35, 308.4, 308.45, 308.5, 308.55, 308.6, 308.65, 308.7, 308.75, 308.8, 308.85, 308.9, 308.95, 309.0, 309.05, 309.1, 309.15, 309.2, 309.25, 309.3, 309.35, 309.4, 309.45, 309.5, 309.55, 309.6, 309.65, 309.7, 309.75, 309.8, 309.85, 309.9, 309.95, 310.0, 310.05, 310.1, 310.15, 310.2, 310.25, 310.3, 310.35, 310.4, 310.45, 310.5, 310.55, 310.6, 310.65, 310.7, 310.75, 310.8, 310.85, 310.9, 310.95, 311.0, 311.05, 311.1, 311.15, 311.2, 311.25, 311.3, 311.35, 311.4, 311.45, 311.5, 311.55, 311.6, 311.65, 311.7, 311.75, 311.8, 311.85, 311.9, 311.95, 312.0, 312.05, 312.1, 312.15, 312.2, 312.25, 312.3, 312.35, 312.4, 312.45, 312.5, 312.55, 312.6, 312.65, 312.7, 312.75, 312.8, 312.85, 312.9, 312.95, 313.0, 313.05, 313.1, 313.15, 313.2, 313.25, 313.3, 313.35, 313.4, 313.45, 313.5, 313.55, 313.6, 313.65, 313.7, 313.75, 313.8, 313.85, 313.9, 313.95, 314.0, 314.05, 314.1, 314.15, 314.2, 314.25, 314.3, 314.35, 314.4, 314.45, 314.5, 314.55, 314.6, 314.65, 314.7, 314.75, 314.8, 314.85, 314.9, 314.95, 315.0, 315.05, 315.1, 315.15, 315.2, 315.25, 315.3, 315.35, 315.4, 315.45, 315.5, 315.55, 315.6, 315.65, 315.7, 315.75, 315.8, 315.85, 315.9, 315.95, 316.0, 316.05, 316.1, 316.15, 316.2, 316.25, 316.3, 316.35, 316.4, 316.45, 316.5, 316.55, 316.6, 316.65, 316.7, 316.75, 316.8, 316.85, 316.9, 316.95, 317.0, 317.05, 317.1, 317.15, 317.2, 317.25, 317.3, 317.35, 317.4, 317.45, 317.5, 317.55, 317.6, 317.65, 317.7, 317.75, 317.8, 317.85, 317.9, 317.95, 318.0, 318.05, 318.1, 318.15, 318.2, 318.25, 318.3, 318.35, 318.4, 318.45, 318.5, 318.55, 318.6, 318.65, 318.7, 318.75, 318.8, 318.85, 318.9, 3	