

Appendix J

Appendix J
Ship Photo Log



N-SS-Boatdeck-FT-11A



N55-Boor Deck- FT-1B

1/2" label- FT-1B

NSS-Boat Deck-FT-1C

NSS-Boat Deck-MM-2A



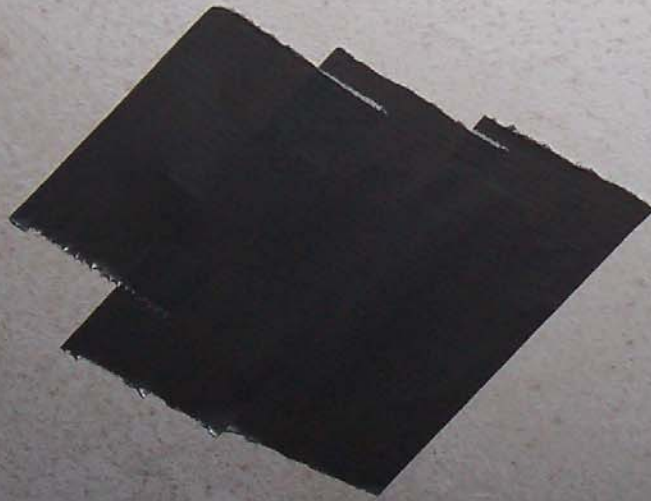
NSS - Boat Deck-MM-2B



NSS-BoatDeck-MM-ZC



NSS-Boat Deck-MM-3A



NSS-BoatDeck-MM-3B



NSS-Boat Deck-MM-3C



NSS-Batdeck-FT-5A



NSS-Boord K-FT-SB

NSS-Boat Deck-FT-5C

NSS-Boat Deck-MM-6A



NSS-Boat Deck MM-6B →

NSS-Boat Deck-MM-6C ->

NSS-BoatDeck-FT-1B

NSS-BoatDeck-MM-4A

NSS-BoatDeck-MM-4A

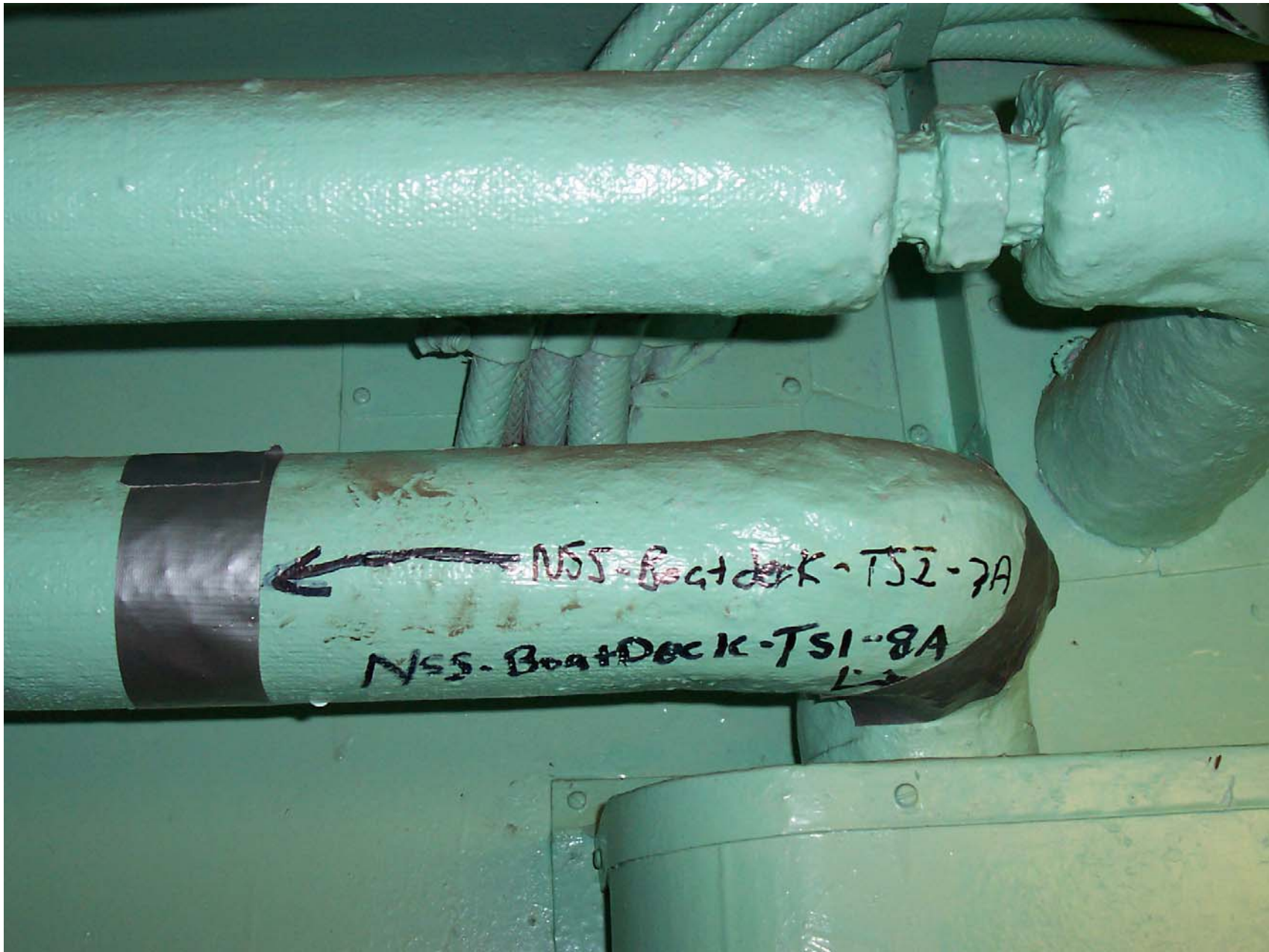


NSS - Boat deck - mm - 4B



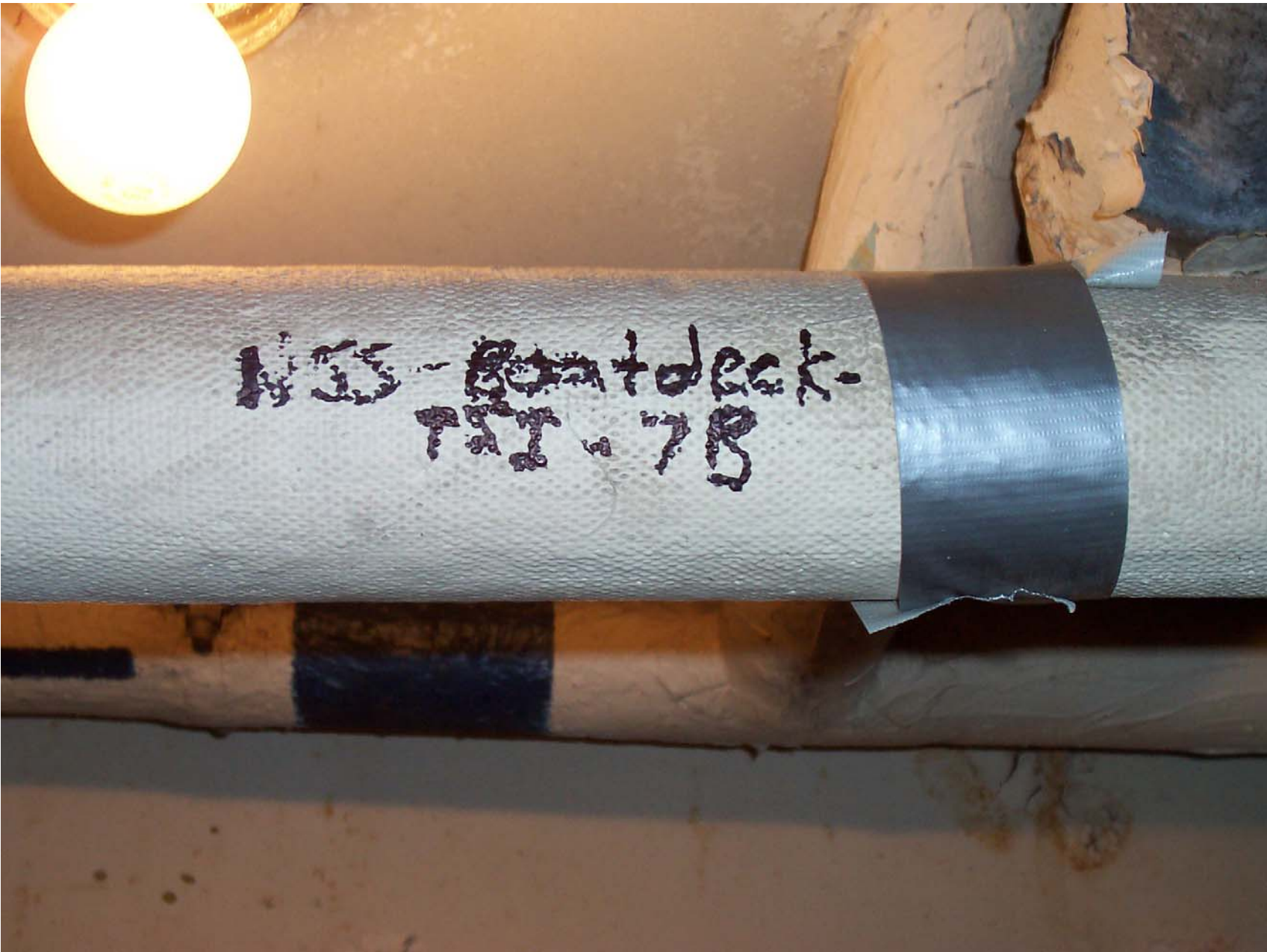
NSS-Boatdeck.
mm-4C





← NSS-BoatDeck-TS2-7A

NSS-BoatDeck-TS1-8A



No. 10-10-10-10-10
10-10-10-10-10





NSS- BoatDeck-TSI-8B





NSS-FromDeck-MM-5A

NSS-FromDeck-MM-5A

NSS-Prom Deck-MM-5B

NSS-Prom Deck-MM-5B

NSS-Prom Deck-MM-5C



NSS-Prom Deck-MM-5C

NSS-PromDeck-MM-6C



NSS-PromDeck-MM-6C

NSS-PromDeck-MM-6B

NSS-Prom Deck-MM-6B



NSS-Boat Deck-MM-3B





NSS-Prom Deck-FT-1A

NSS-PromDeck-FT-1B

NSS-PromDeck-FT-1B



NSS-PromDeck-FT-10

A photograph showing a close-up of a ship's deck railing. The railing consists of a light-colored, possibly painted, metal band with a darker, rusty section in the middle. A white, rectangular label is affixed to the lower part of the railing. The label and the metal band both have the handwritten text "NSS - Prom Deck - FT - 2A" written on them in black ink. The background is a dark, textured surface, likely the ship's hull or another part of the deck.

NSS - Prom Deck - FT - 2A


NSS - Prom Deck - FT - 2A

NSS-Prom Deck-FT-2B

NSS-Prom Deck-FT-2C



NSS-Prom Deck-FT-2C



NSS - Prom Deck - MM - 3A

NSS - Prom Deck - MM - 3A



NSS-PromDeck-MM-3B

NSS-PromDeck-MM-3B



NSS-Prom Deck-MM-3C

Prom Deck-MM-3C

← NSS-Prom

NSS-Prom Deck-MM-7A

← NSS-Prom Deck

NSS-Prom Deck-MM-7B



NSS-PromDeck-MM-7C

A photograph of a metal structure, possibly a ship's deck, with two labels. The labels are made of a perforated metal sheet and are attached to a larger metal surface. The top label is a rectangular piece of metal with the text "NSS-Prom Deck-MM-4A" written on it. Below it is a larger, irregularly shaped piece of metal with the same text "NSS-Prom Deck-MM-4A" written on it. The background shows various mechanical components, including a green valve and a circular metal part.

NSS-Prom Deck-MM-4A

NSS-Prom Deck-MM-4A

NSS-Prom Deck-MM-4B

NSS-Prom Deck-MM-4B

NSS-ADeck-MM-20A

NSS-Deck A-MM-9B

-SSN

NSS-Deck A-MM-21A

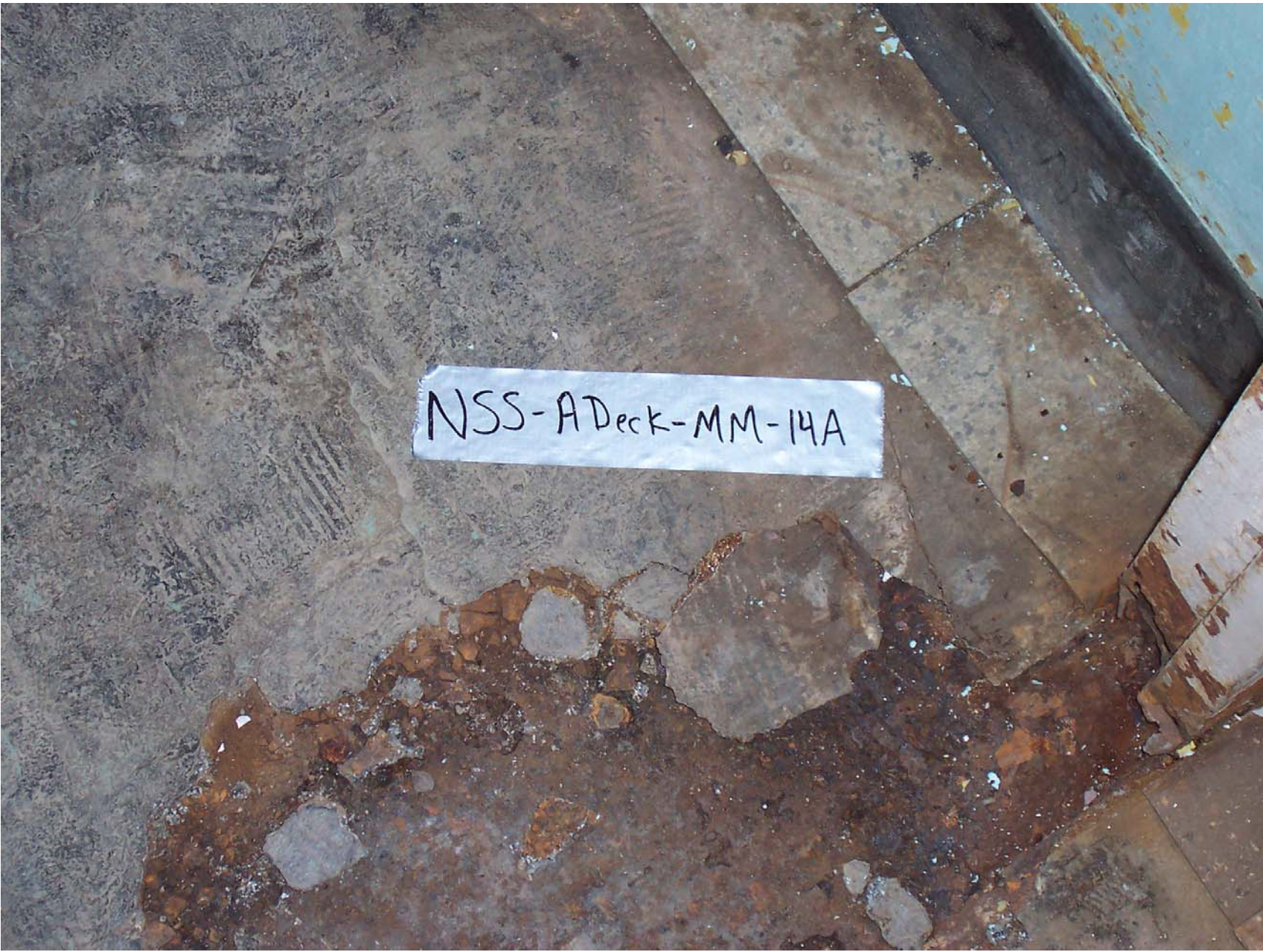
NSS-Deck A-MM-21B



NSS-Deck A-MM-9C



NSS-DeckA-MM-21C

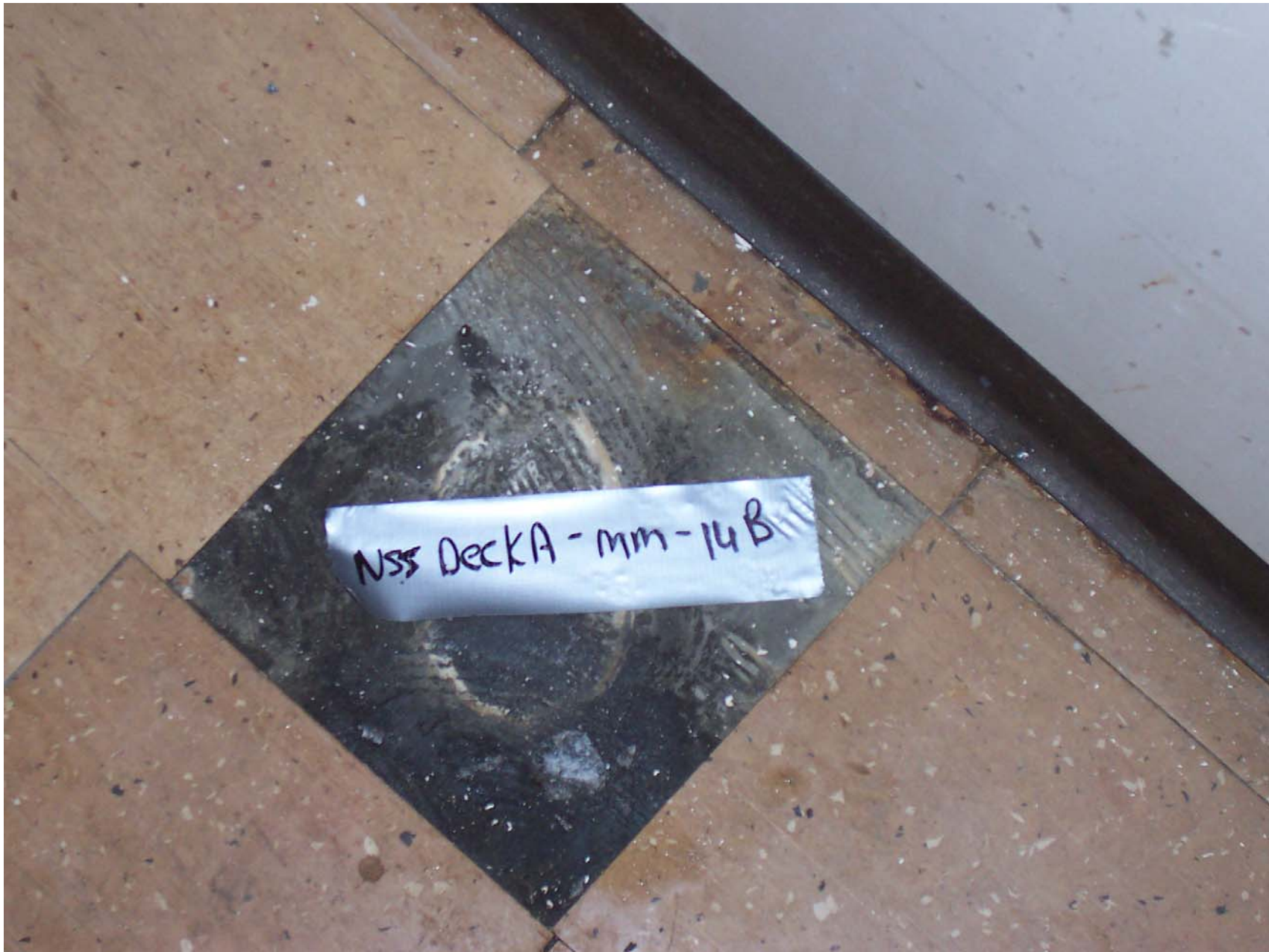


NSS-ADeck-MM-14A



NSS-DeckA-MM-14C

NSS-DeckA-MM-14C



NSS Deck A - mm - 14 B





MISS Deck A-CT-13B



NSS-DeckA-CT-13C

NSS-DeckA-MM-8A



NSS-Deck A-MM-8B



NSS-DeckA-MM-8C



NSS-Deck A-TSI-2B





KA-TSI-32

NSS-DECKA-T51-2C



NSS-Deck A-FT-1C



NSS DELKIA
FT 11B

NSS-DeckA-FT-11B

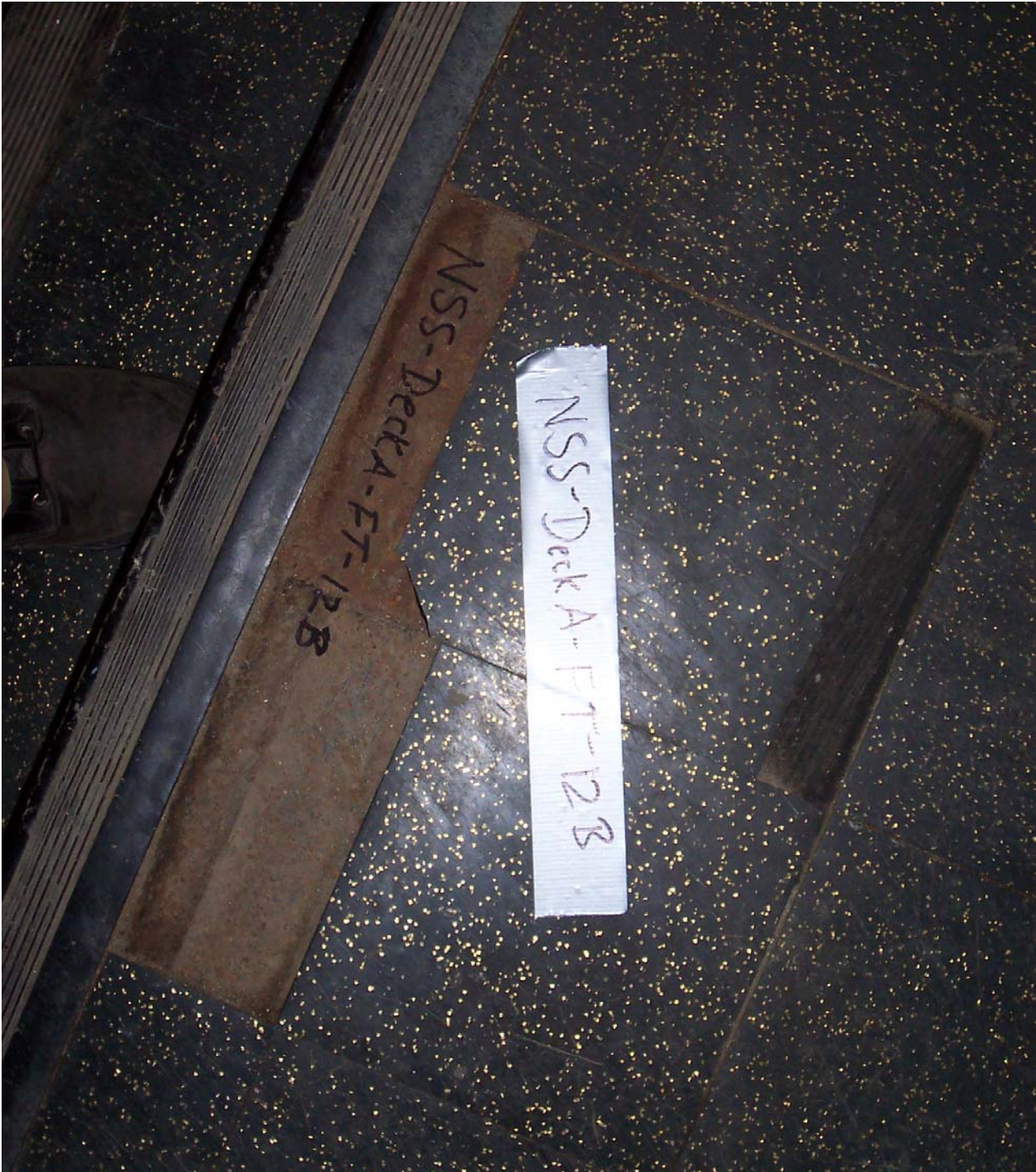
NSS-DeckA-FT-10C



NSS-Deckd-FT-107B







NSS-DeckA-FT-12B

NSS-DeckA-FT-12B

NSS-Deck A-FT-12C

NSS-DaktA-FT-158



NSSDeckA-FT-15C



NSS-Deck A-FT-518 →

NSS-Deck-FT-48 →



← NSS-DECKA-FT-6B

← NSS-Deck A-FT-7B



NSS Deck A-FT-16C

D. Miller



NSS-DeckA-FT-16C

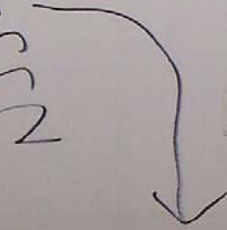
MSS-Deck A-FT-16B

PROPER USE AND
CARE OF ROPE
UTILISATION ET
ENTRETIEN DES
CORDES
INSTRUCCIONES
PARA EL USO Y
CONSERVACIÓN DE
LAS CUERDAS

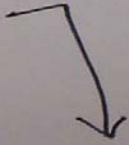
Includes information on knots
Included and fitted.
Avec renseignements sur différents
nœuds et accessoires de nœuds y
autres.
con información acerca de nudos y
otros.



N55-Deck A-FT-SC



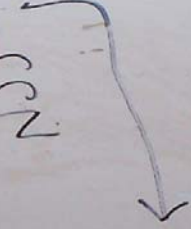
N55-DeckA-FT-4C



NSS-DECK A-FT-6C



NSS-DECKA-FT-7C



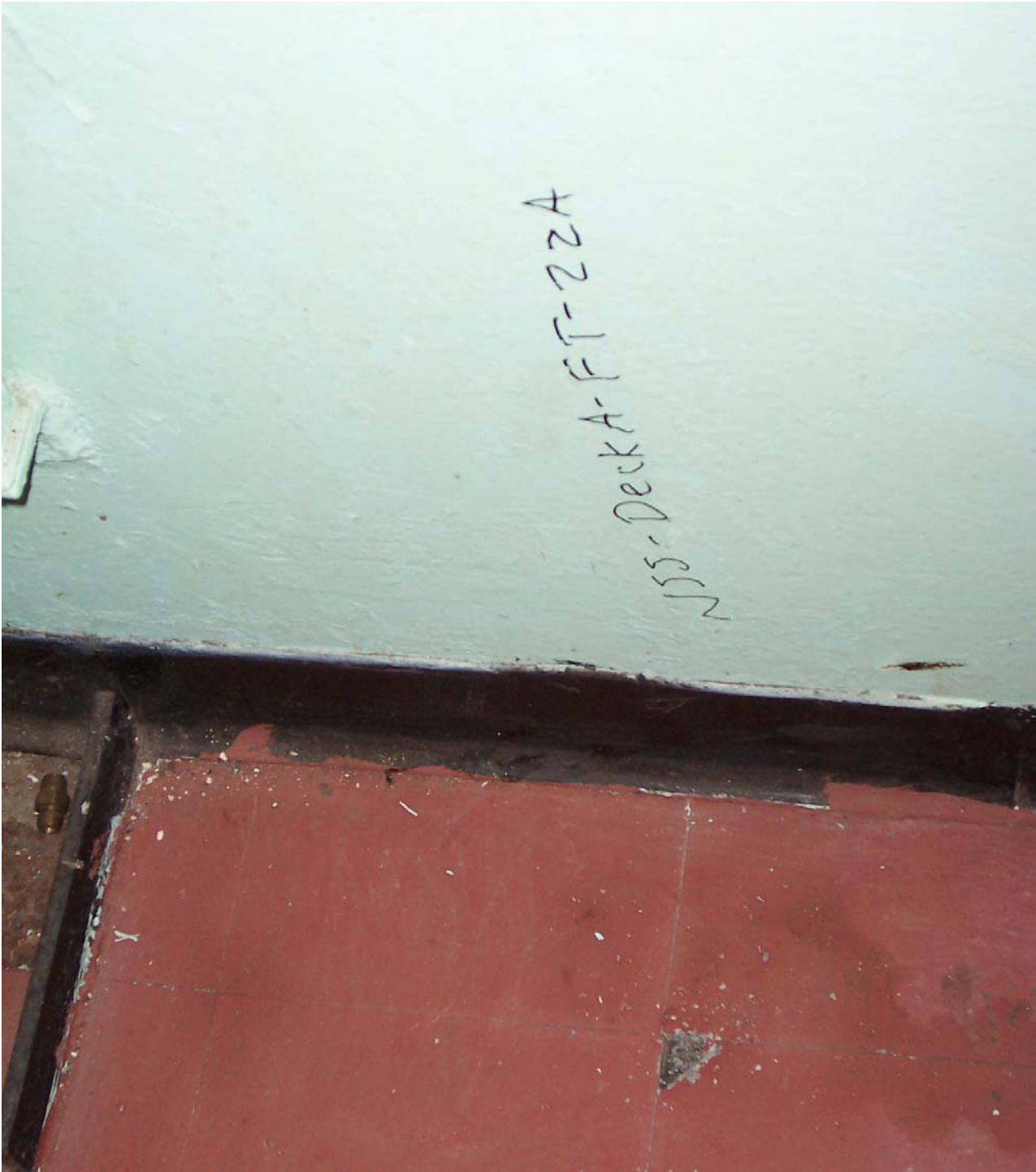


NSS-DECKA-FT-17B



NSS-Deck A-FT-18B

N55-DeckA-FT-22A



MS-200-AFT-22B



N55-Deck A-FT-22C

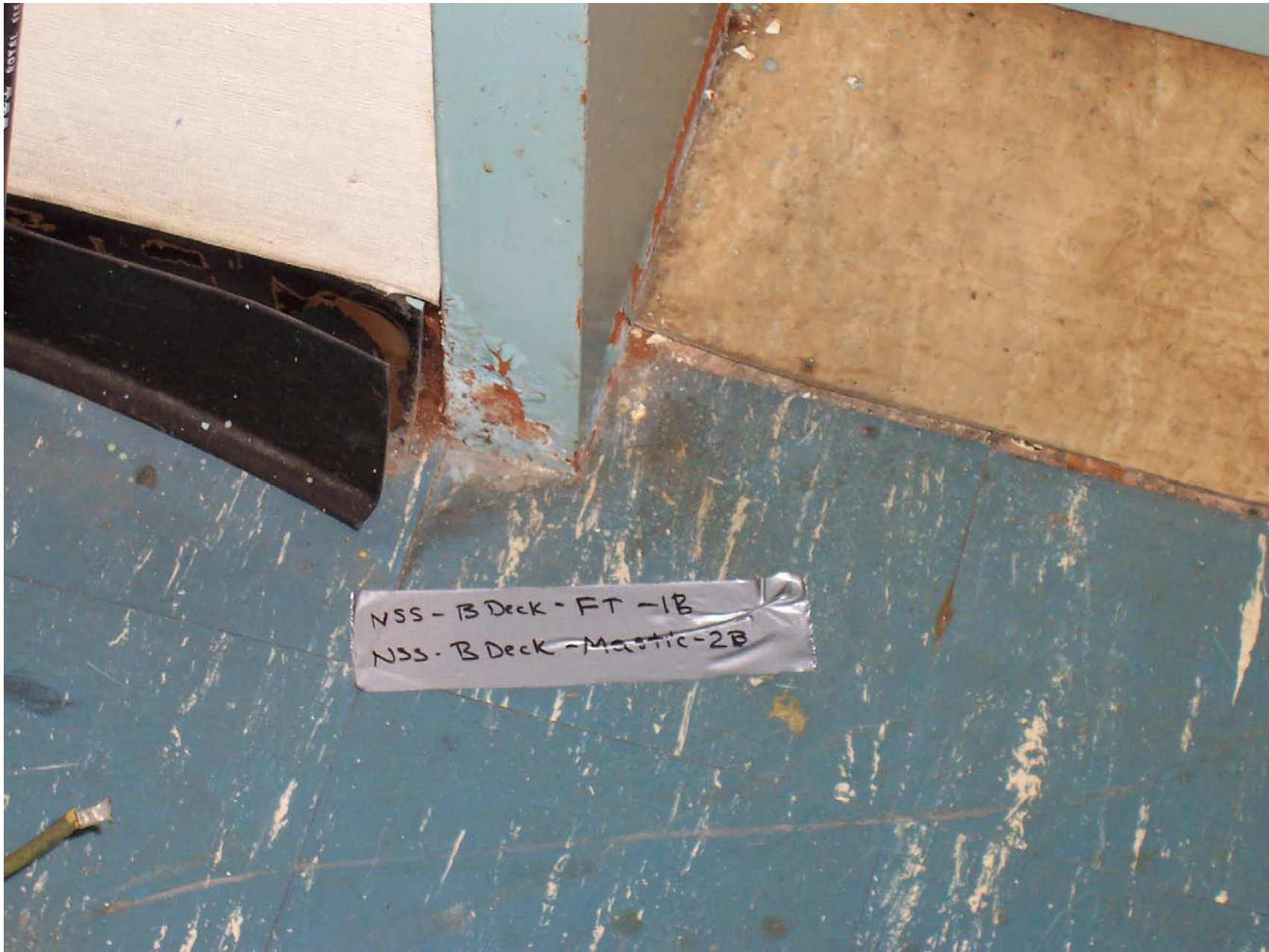


NSS-Deck A-FT-17C →

NSS-Deck A-FT-18C ~~17A~~ →




NSS-BDeck-FT-1A
NSS-BDeck-Mastic-2A



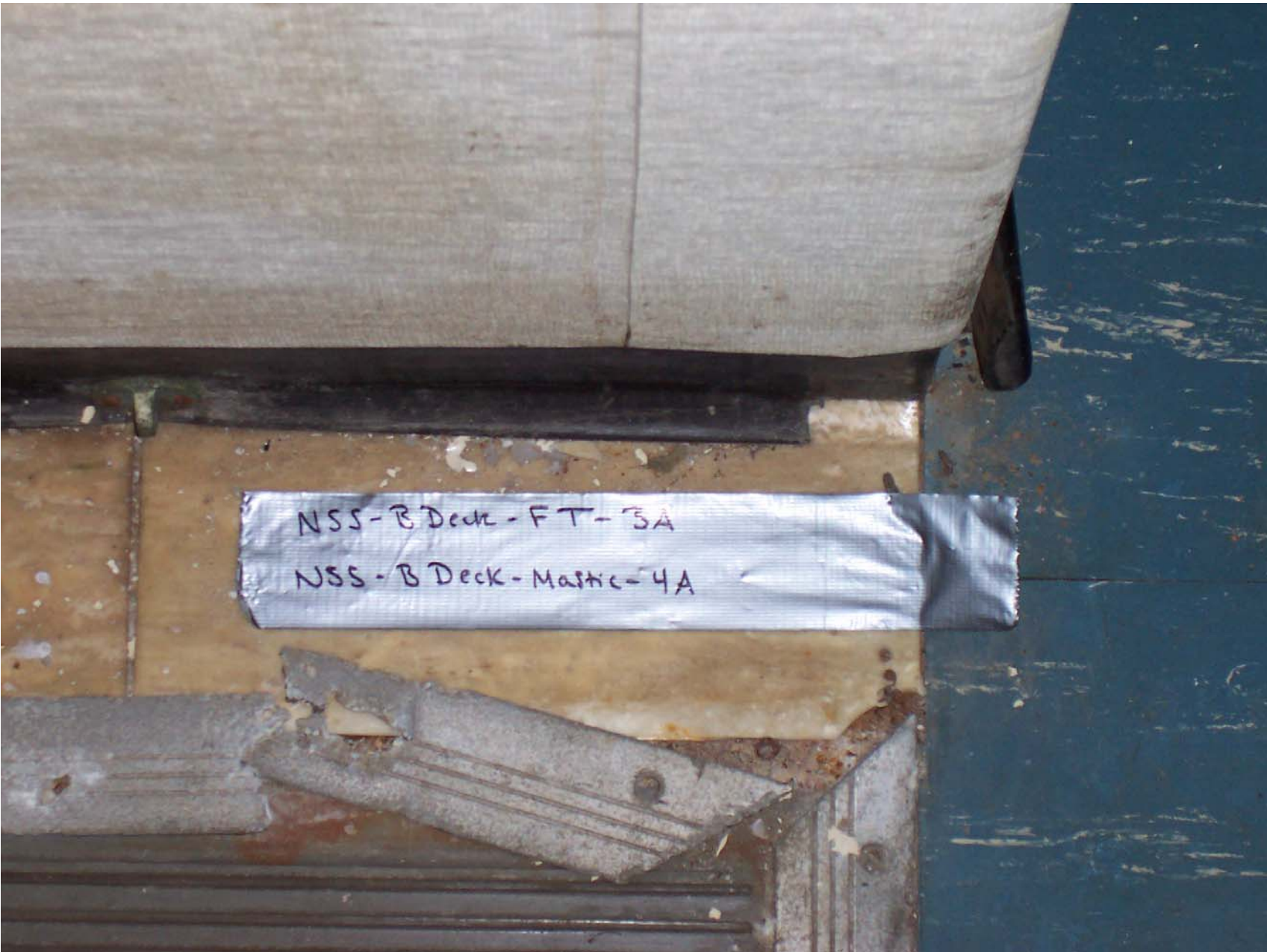
NSS - B Deck - FT - 1B

NSS - B Deck - Mastic - 2B



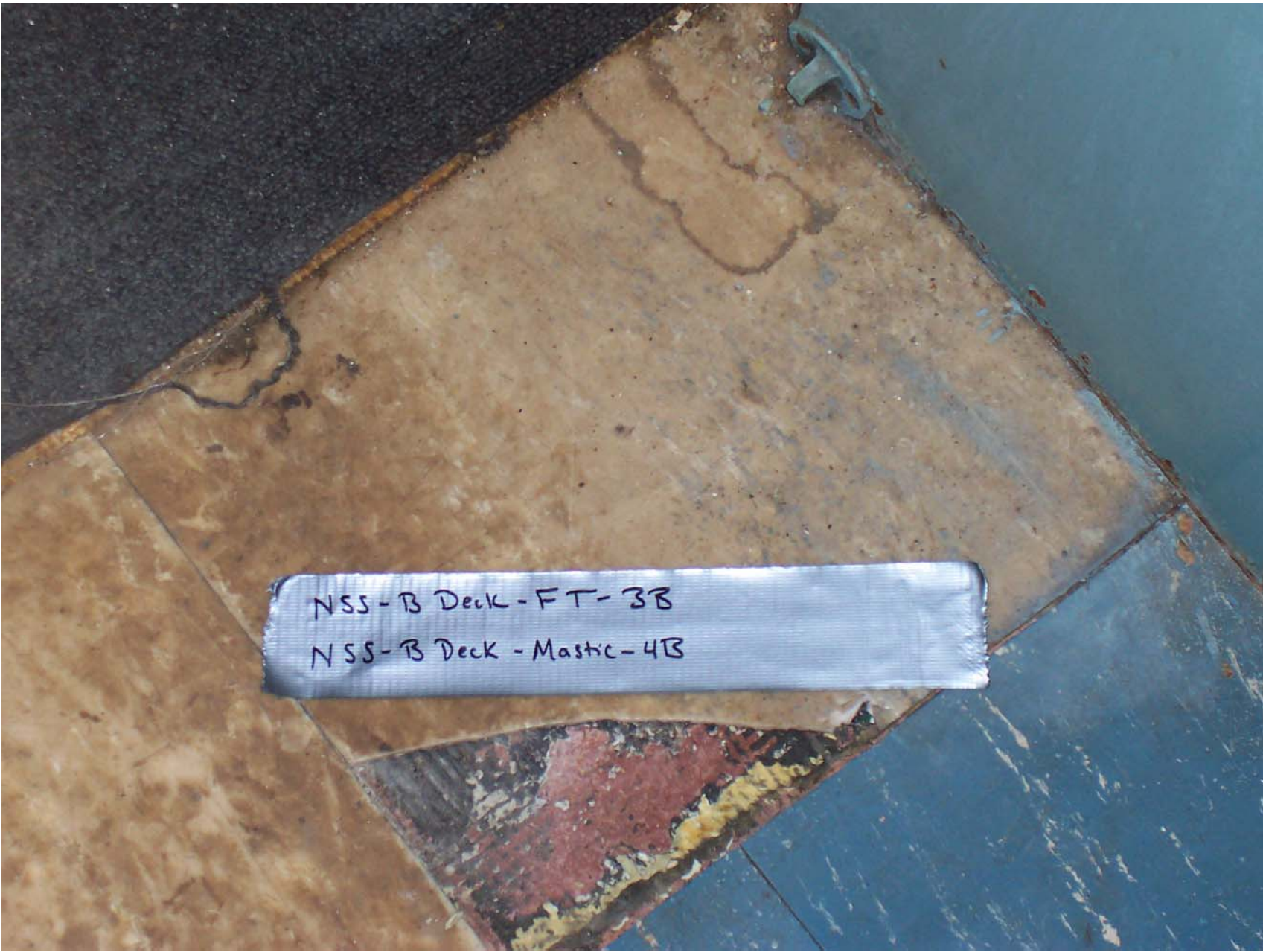
NSS-B Deck-FT-1C

NSS-B DECK - Mastic-2C




NSS-B Deck - FT - 3A

NSS - B Deck - Mastic - 4A

A photograph showing a corner of a deck where a wooden board has been damaged and is being replaced. The old board is light brown wood with dark stains. The new board is a darker, blue-grey color. A white label with handwritten text is placed on the new board. The label has two lines of text. The background shows a dark, textured surface, possibly asphalt or concrete, and a metal fastener is visible on the old board.

NSS-B Deck-FT-3B

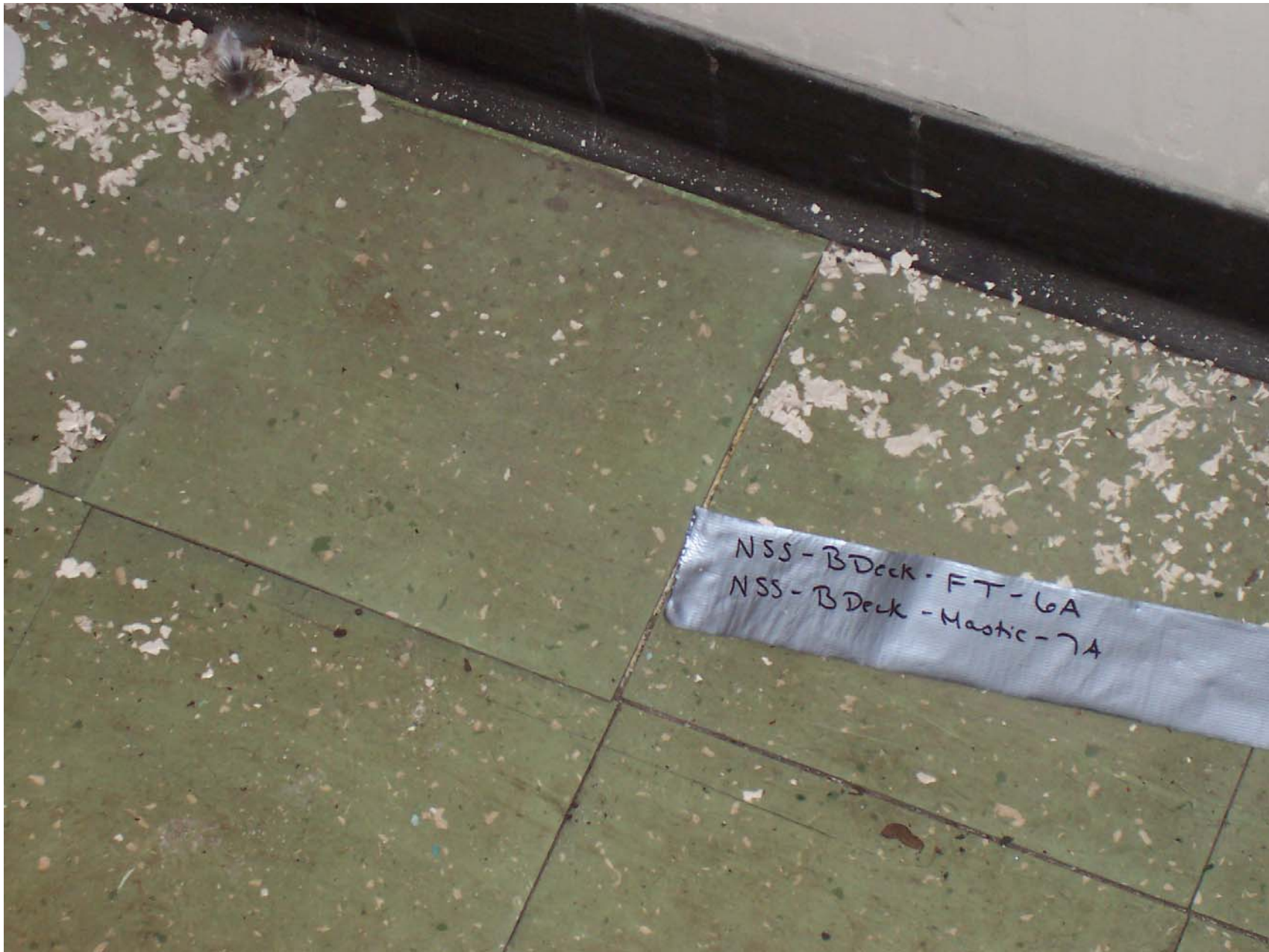
NSS-B Deck-Mastic-4B



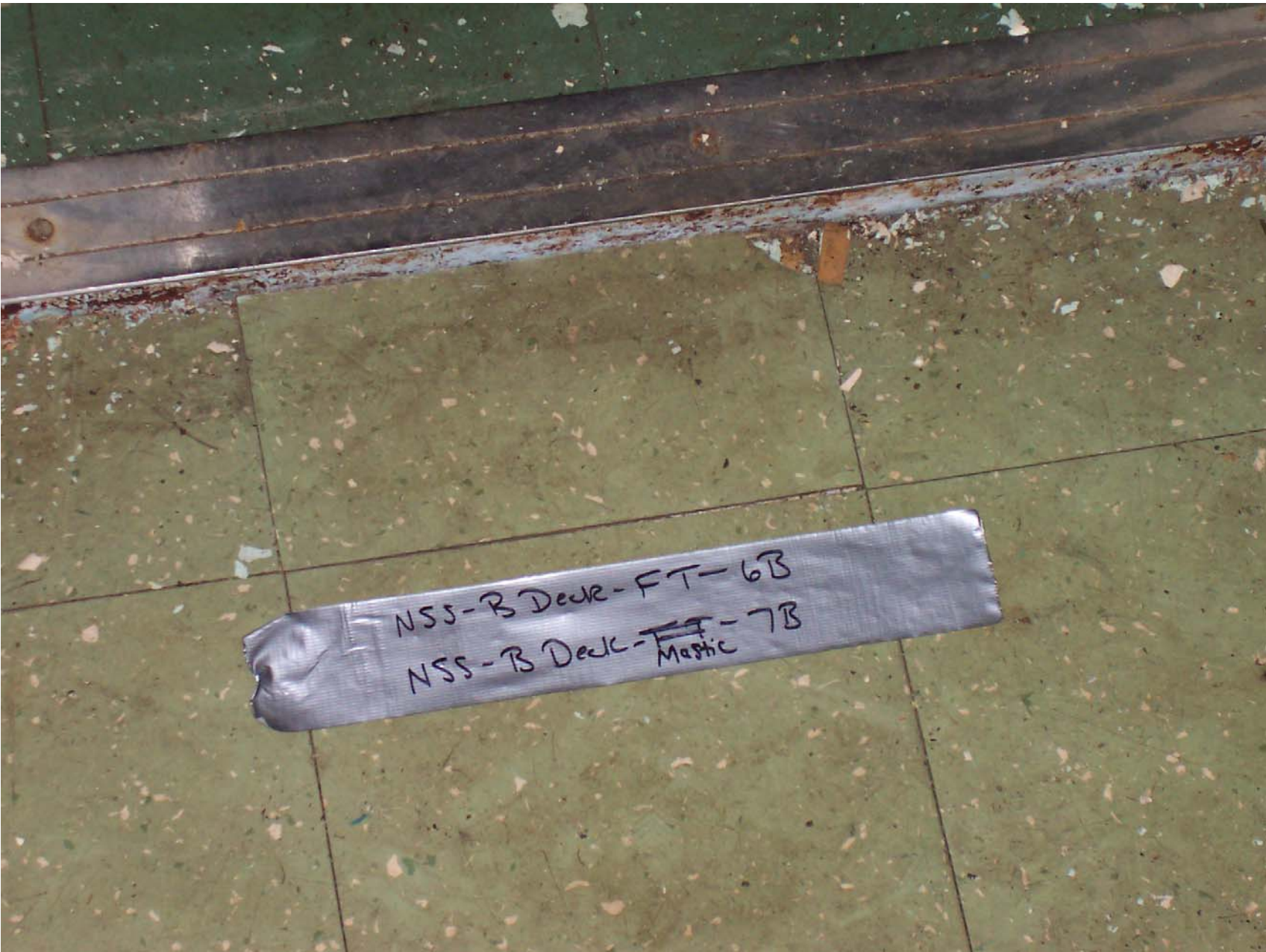
NSS-B Deck - FT - 3C

NSS-B Deck - Mastic - 4C

NSS-B Deck-Mastic-5A



NSS - BDeck - FT - 6A
NSS - BDeck - Mastic - 7A



NSS-B Deck-FT-6B

NSS-B Deck-~~FT~~-7B
Mastic

A photograph showing a corner of a floor where a tile is missing. The floor is made of green tiles with a speckled pattern. A large, irregularly shaped piece of light-colored material, possibly a tile or underlayment, is missing from the corner. Three pieces of white evidence tape are placed on the floor. The top two pieces are stacked and contain the text 'NSS-B Deck-FT-6C' and 'NSS-B Deck-Mastic-7C'. The bottom piece contains the text 'NSS-B Deck-fiberboard-9A'. A black baseboard is visible along the wall on the right side of the image.

NSS-B Deck-FT-6C

NSS-B Deck-Mastic-7C

NSS-B Deck-fiberboard-9A





NSS-B Deck-FT-10A
NSS-B Deck-Mastic-11A

NSS-B Deck - fiberboard - 9B

NSS-BDeck-FT-10B
NSS-BDeck-Mastic-11B





NSA-15 Deck - FT-100
NSA-16 Deck - Mastik-11C

NSS-B Deck-FT-6B

NSS-B Deck-~~FT~~-7B
Mastic

NSS-B Deck-fiberboard-9C

NSS-B Deck-FT-12A
NSS-B Deck-Mastic-13A



NSS-B Deck-FT-12B
NSS-B Deck-Mastic-13B

NSS-B Deck-FT-12C
NSS-B Deck-Mastic-13C



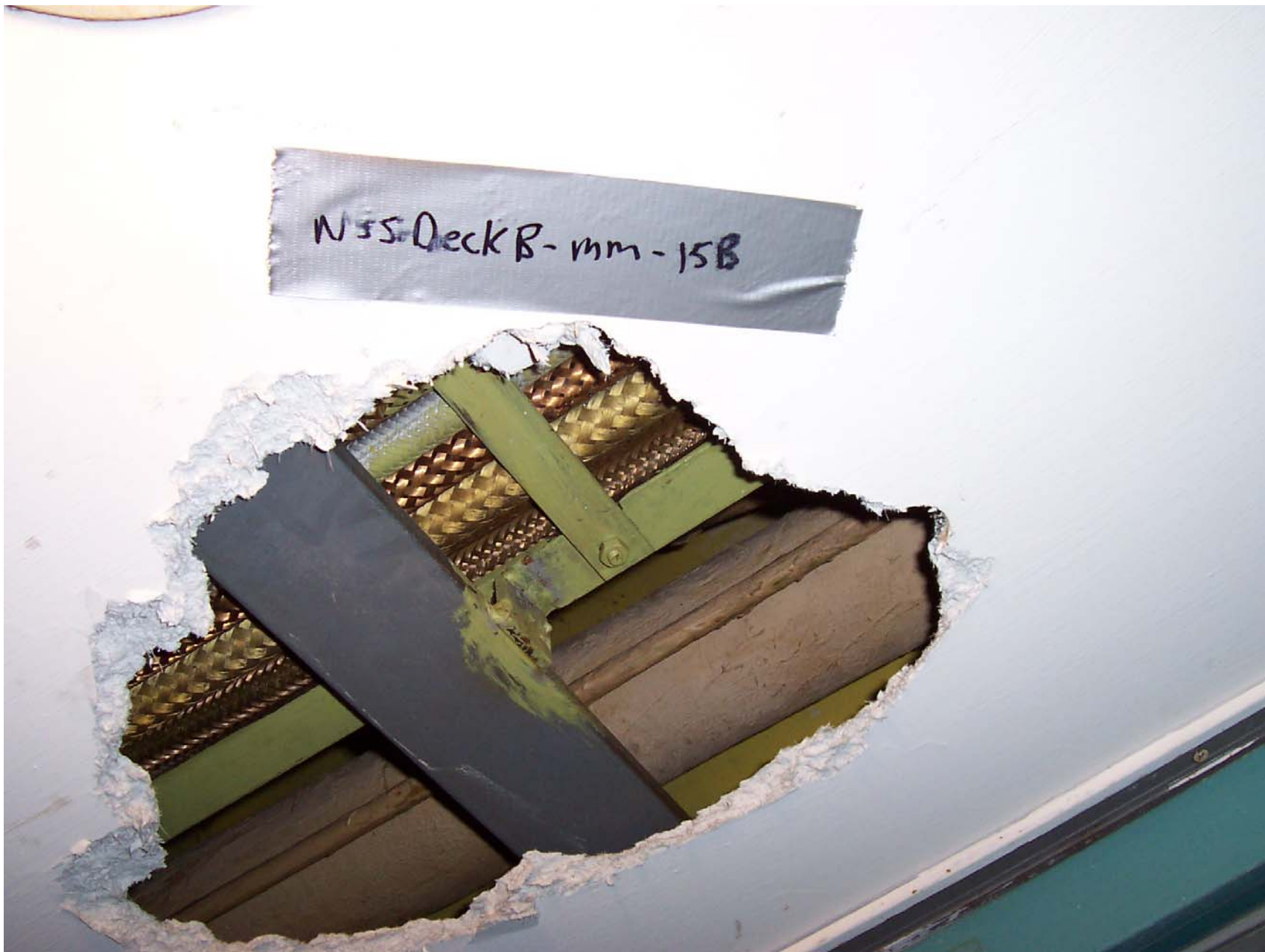
A photograph showing a hole in a white ceiling. The hole reveals a brown, textured surface, possibly insulation or a wooden joist, and a dark wooden beam. A piece of silver duct tape is stuck to the ceiling below the hole, with the handwritten text "NSS-B Deck-MM-15A" written on it in black marker. A small, round, white object is visible on the brown surface above the hole.

NSS-B Deck-MM-15A



N53 Deck B - FT - 16A

N 35 Deck B - mm - 15 B



N55 Deck B-mm-15C



NSS Deck B - FT-16B

A photograph showing a floor made of large, light-brown tiles. In the center, a piece of silver, reflective tape is stuck to the floor. The tape has the handwritten text "NSS Deck B-FT-16C" written on it in black ink. The floor around the tape shows signs of wear, including some dark, possibly stained or damaged areas, particularly in the upper and lower right quadrants. There are also some small, light-colored debris or particles scattered on the tiles.

NSS Deck B-FT-16C

NSS Deck B - subfloor - 14B



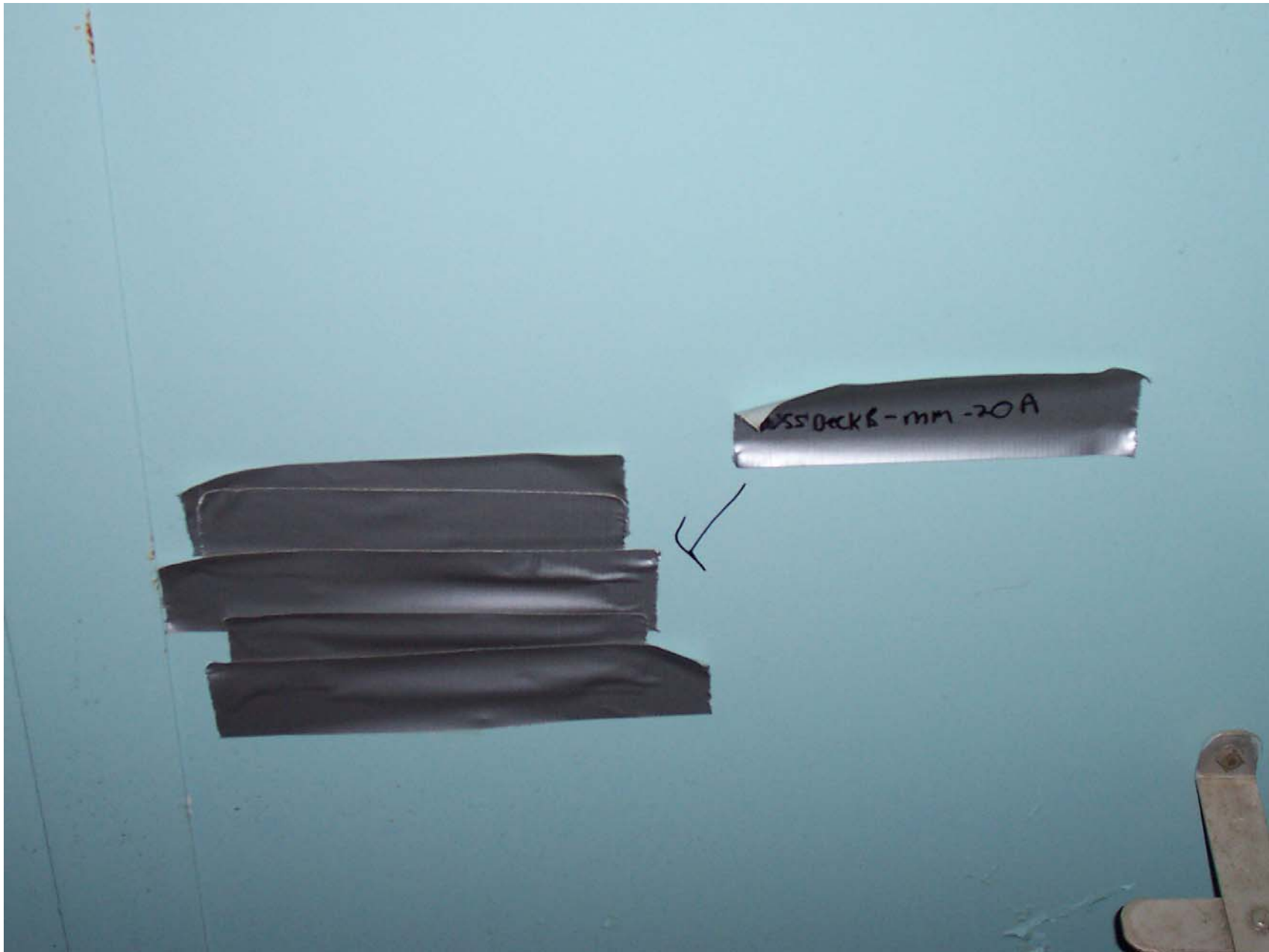
145 DEGB -
T52-19A



NSDACK B-
K TSI - 18A

255 Deck B - MM - 20 B
~~255 Deck B~~
A





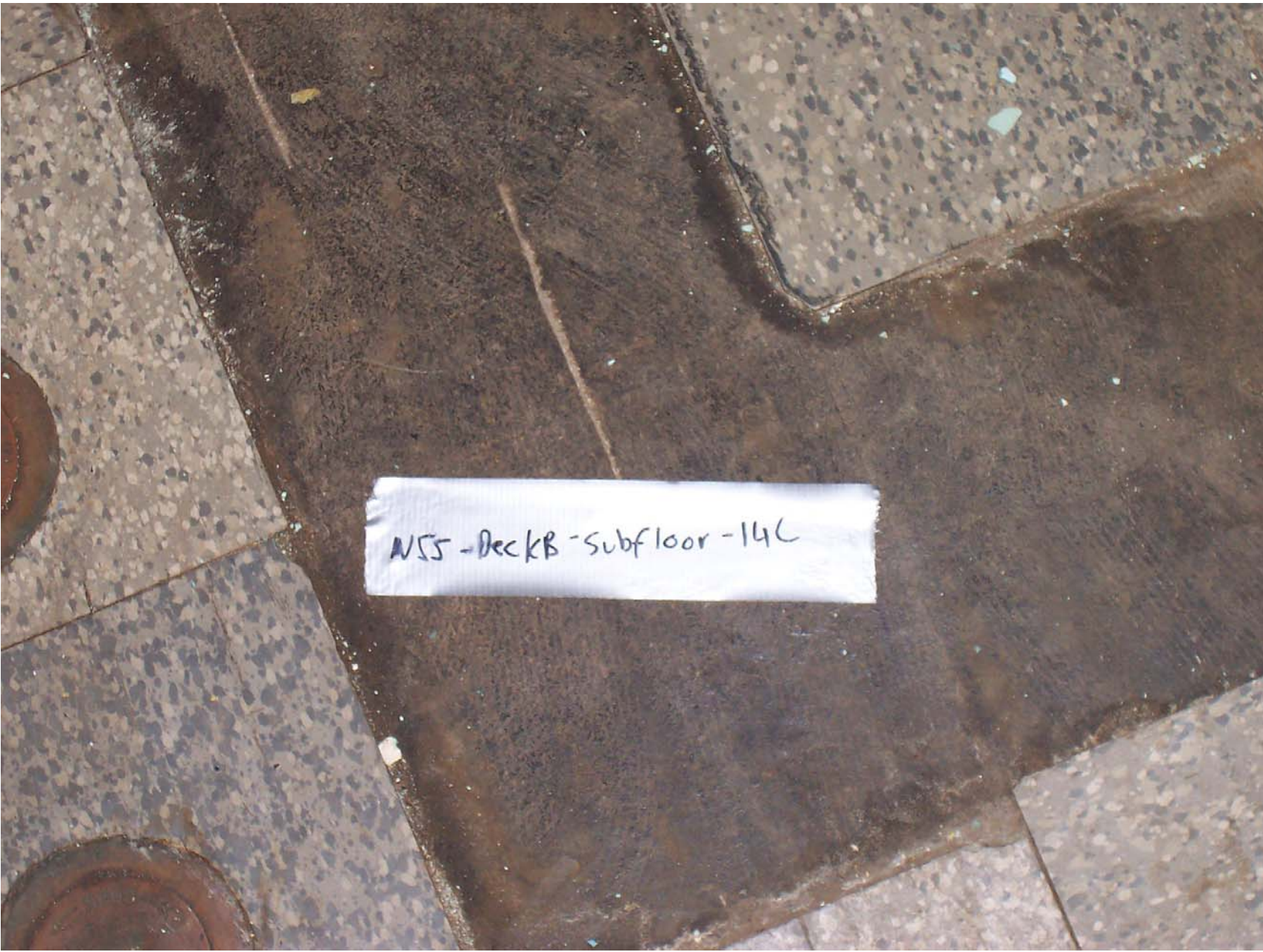
NSS Deck B - mm - 20C



SS-DECKB-
TSE-15C



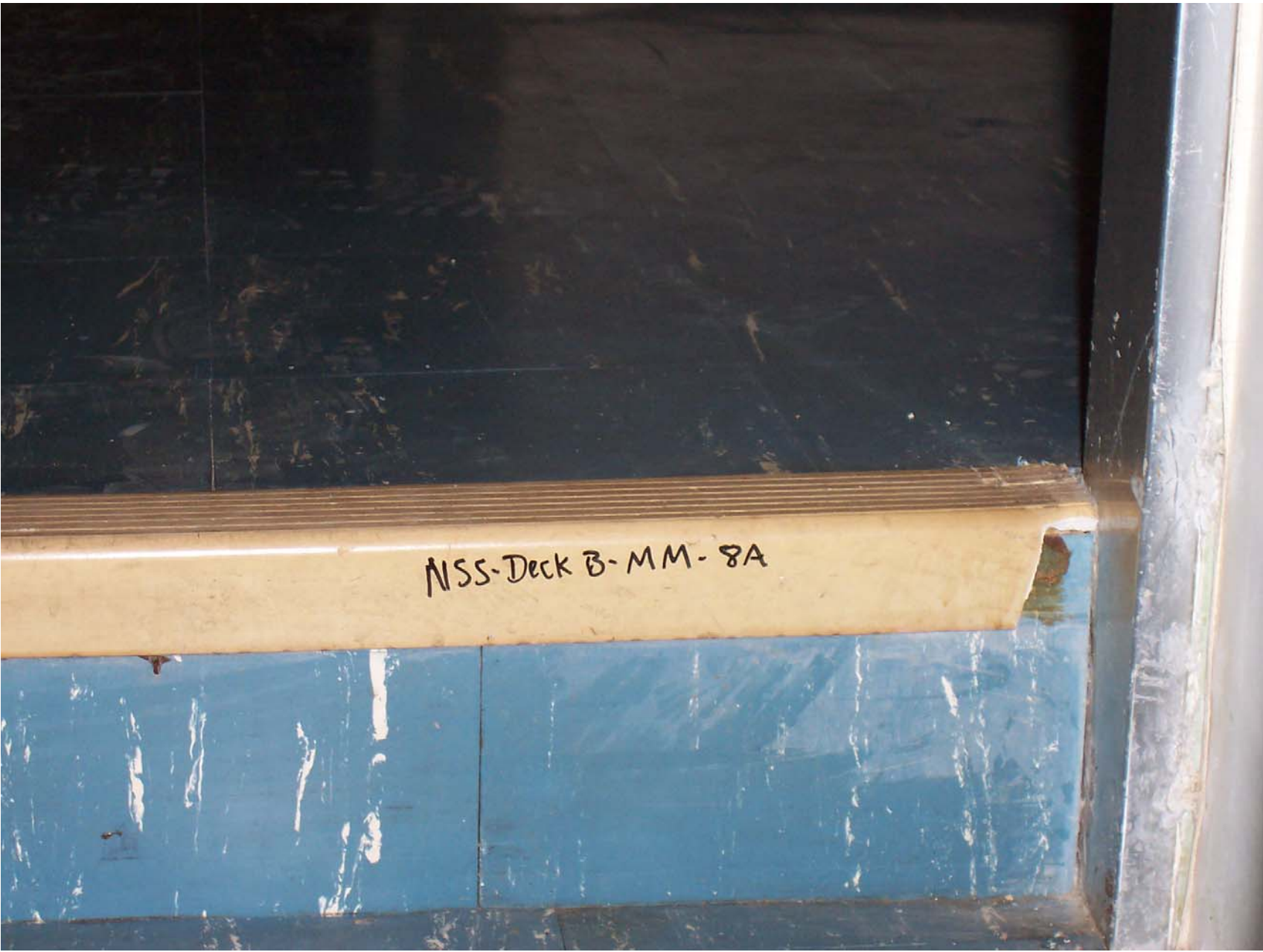
N55-
PAC K B-75
19C



N55 - Deck B - Subfloor - 14C

ISS Deck B-
T-1 - 18B

MISS Dec K9 -
TSE - 19C

A photograph showing a close-up of a metal beam, likely part of a ship's deck structure. The beam is light-colored and has the handwritten text "NSS-Deck B-MM-8A" on its side. The beam is positioned horizontally, with a dark, textured surface above it and a blue-painted surface below it. The blue paint is somewhat worn and peeling. To the right, a vertical metal structure is visible, possibly a corner or a support.

NSS-Deck B-MM-8A

NSS-Deck B-MM-8B →

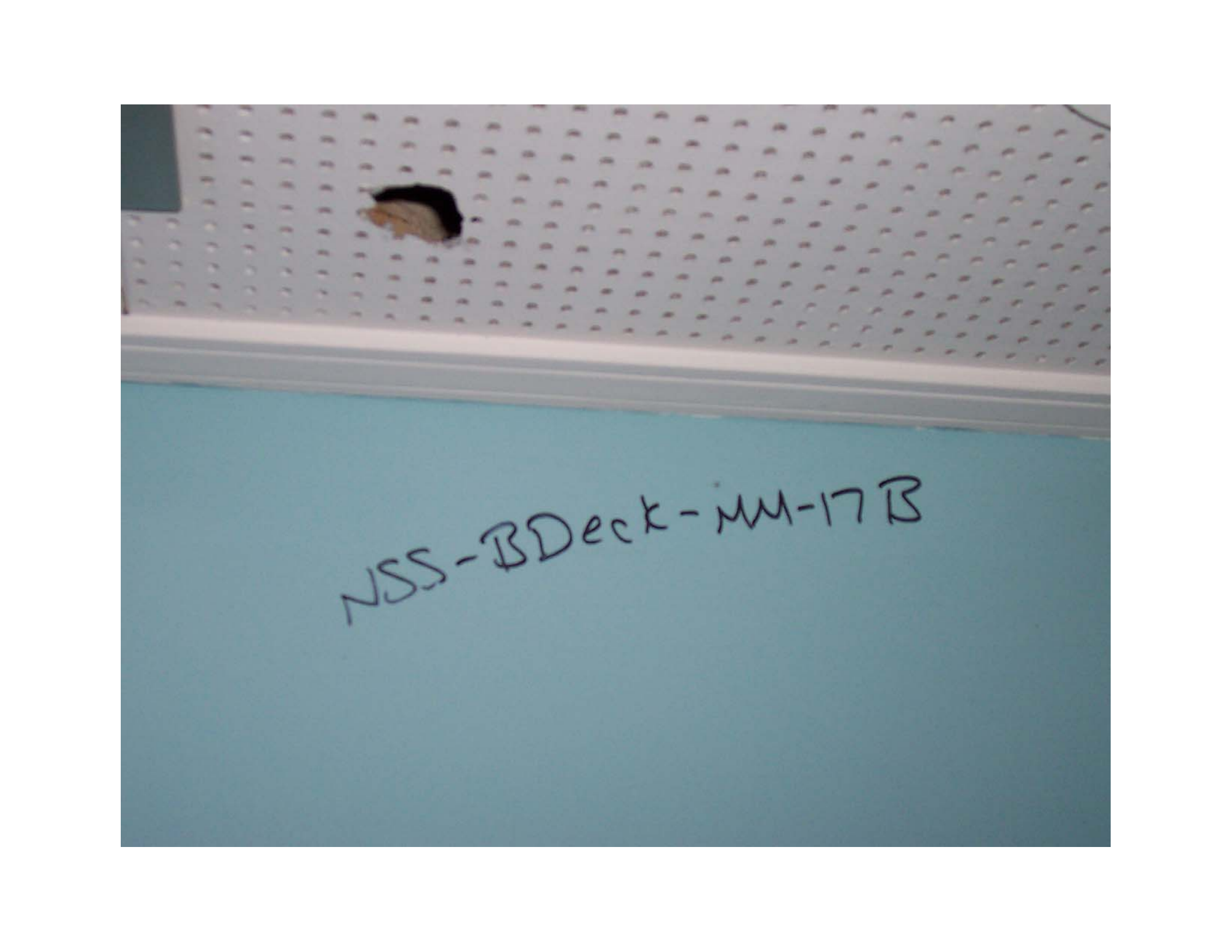




NSS-Deck B-MM-8C



NSS-Deck B - Mastic - SC

A photograph showing a white perforated ceiling with a small hole. Below the ceiling is a blue wall with handwritten text. The text reads "NSS-BDeck-MM-17B".

NSS-BDeck-MM-17B

NDS-B Deck-MM-17C



NSS-B Deck-MM-17A



NSS-B Deck - Mastic - 5B

NSS DECK C
FT ~~104~~ 1A

N

NSS DECK C
MM 2A

NSS DECK
MM3A








NISS DELKC
FT 6A



NBS DURE
ET TA



NSS DECK
TS1 8A








NSS DECKD
FT-26A

A photograph of a green cylindrical object, possibly a pipe or a roll of material, with a silver identification band wrapped around its center. The band has handwritten text in black marker. The background is dark and indistinct.

NSS DECK D
TSI-27A



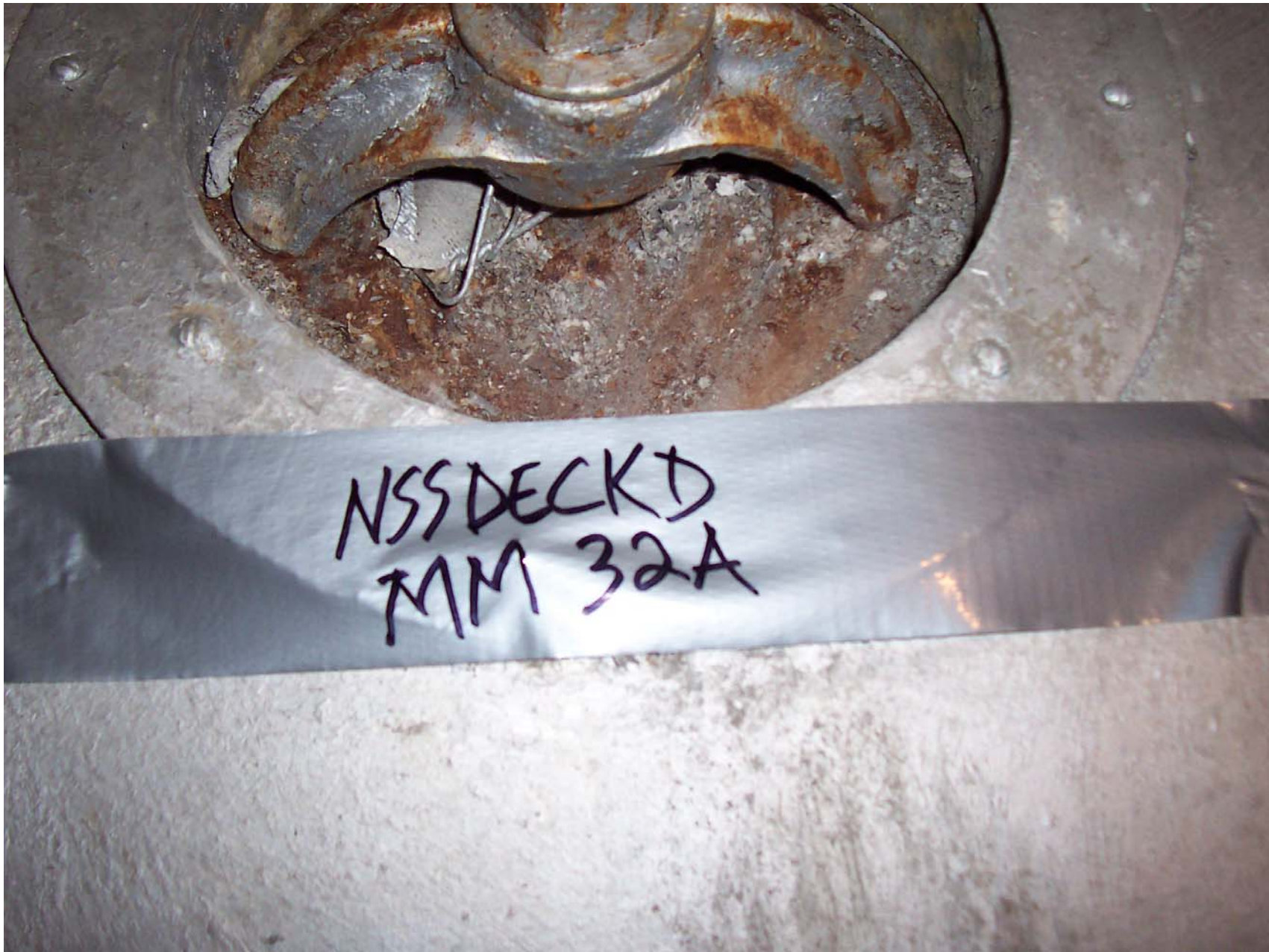
A photograph showing a damaged green surface, possibly a floor or wall, with a black tape label. The surface is cracked and peeling, revealing a lighter, brownish material underneath. A black tape strip is applied horizontally across the middle of the image. The text on the tape is handwritten in black ink. In the bottom right corner, there is a piece of crumpled, reflective material, possibly aluminum foil or a repair patch.

NSS DECK D TSI-29A

NSS DECKD-751-30A

NSSDECKD-TSI-31A

OSSEI



NSS DECK D
MM 32A

NSS DECK D
TSI 33A





DO NOT BACKSEAT

COMPRESSOR SUCTION

DISCH. VALVES - THAT CUTS
OUT GAGE LINES!

NSS DECK D
TS136A

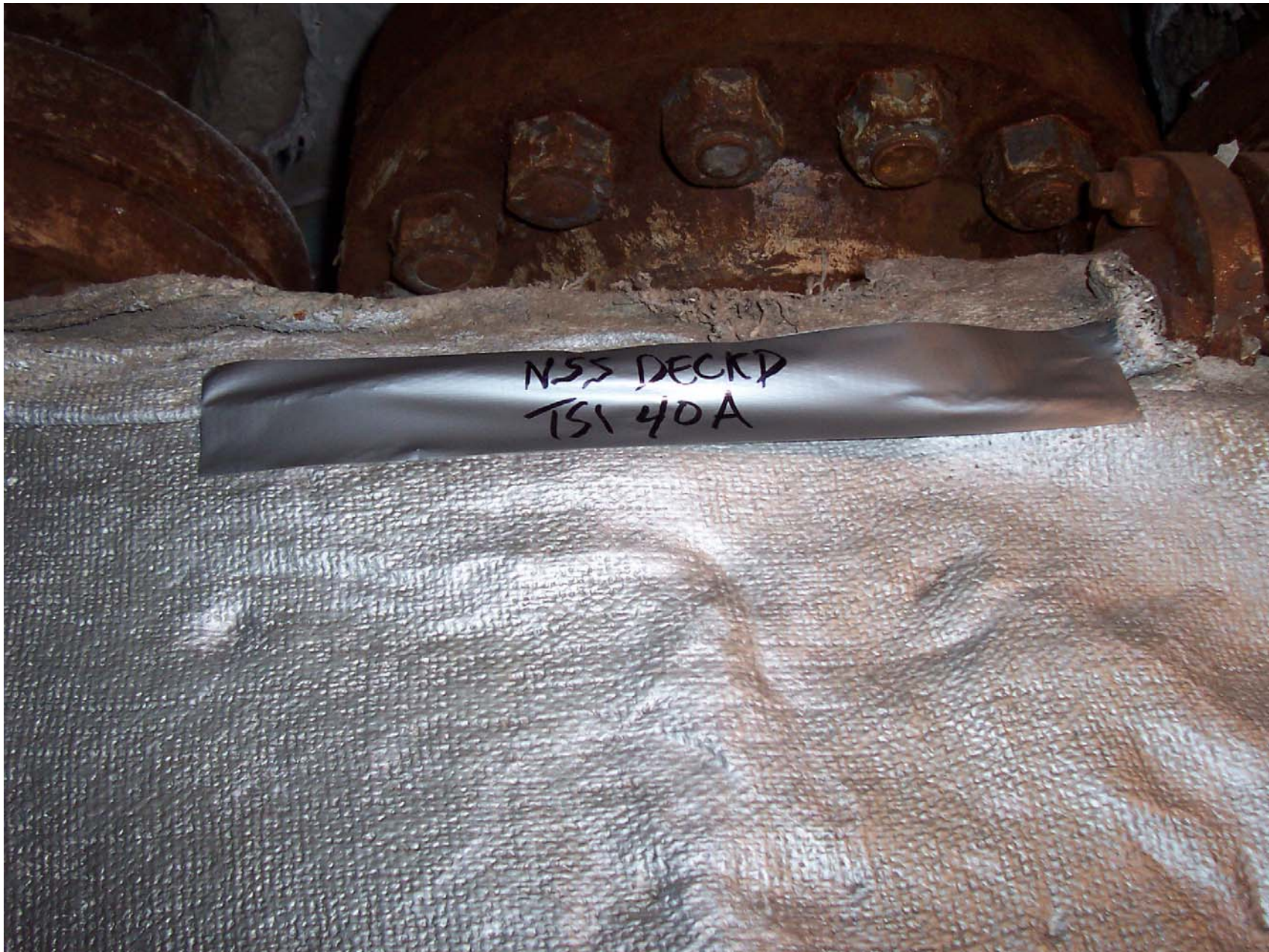
NSS DECKD
TBI 37A

NSS DECK D

T S I 38A



NSD DECK D
TSI 39A







NSS DECK D
TSI 43A



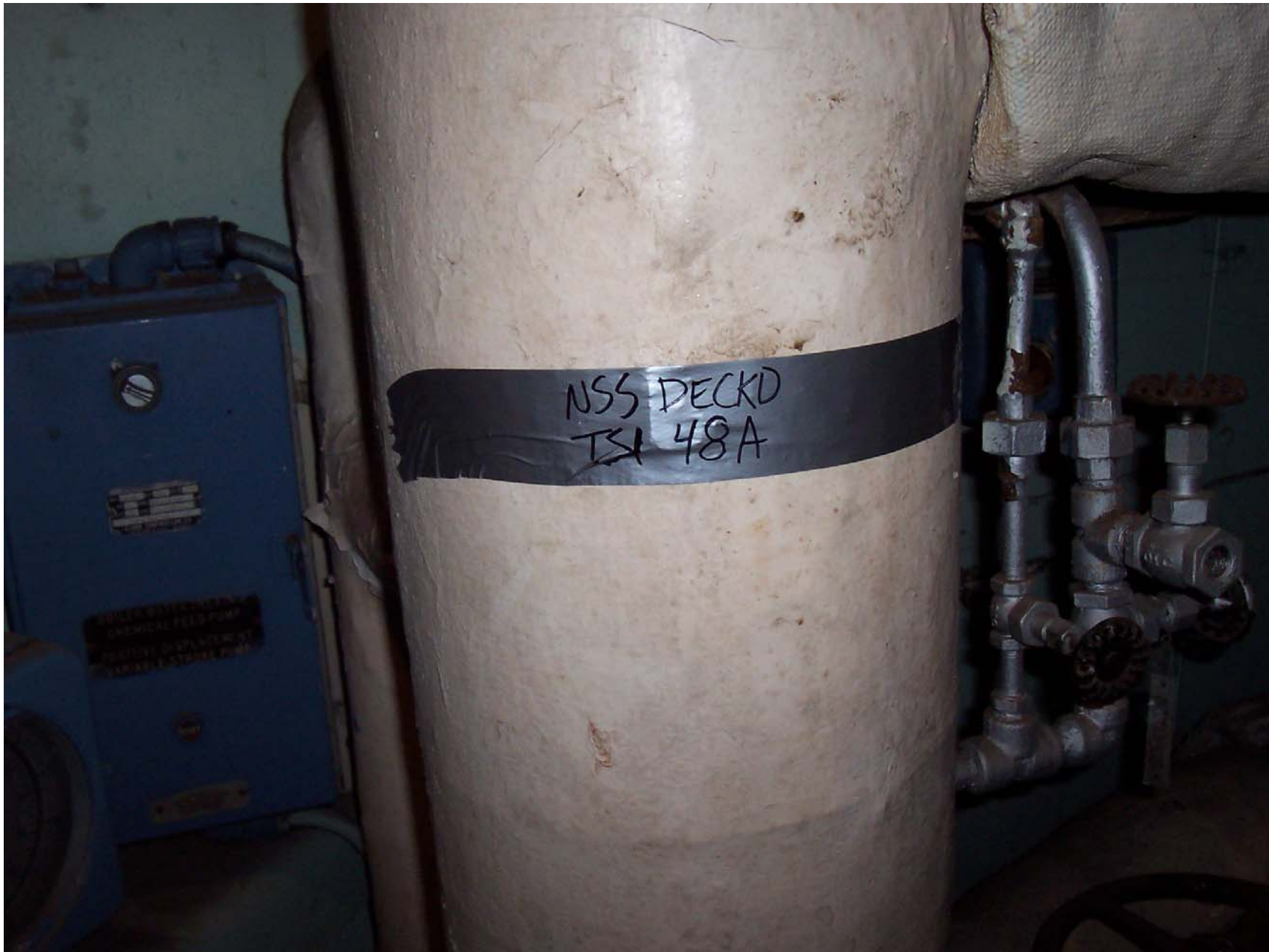


NSS DECK
TSI-45A



NSS DECKD
TSI 46A





NSS DECKD
TSI 48A





VAPOR

NSS DECK
12/5/04





NSSDECKD
TSI 52A

PIPEIR

NSS DECKD
TS1 53A



INSIDE
FT 54A



NSS VECKD
FT 55A



NSS
DECKD
TSI 56A



NSS
DECK D
751 57A



N 55-D Deck - FT - ~~SSC~~ SSC

N 55-D Deck - FT - 54C







NSS
DECK
TS156C

← NSS-D Deck - FT-54B

← NSS-D Deck - FT-55B



ABS
DECK
TSI SUB

NSS
DECKD
T51 56A



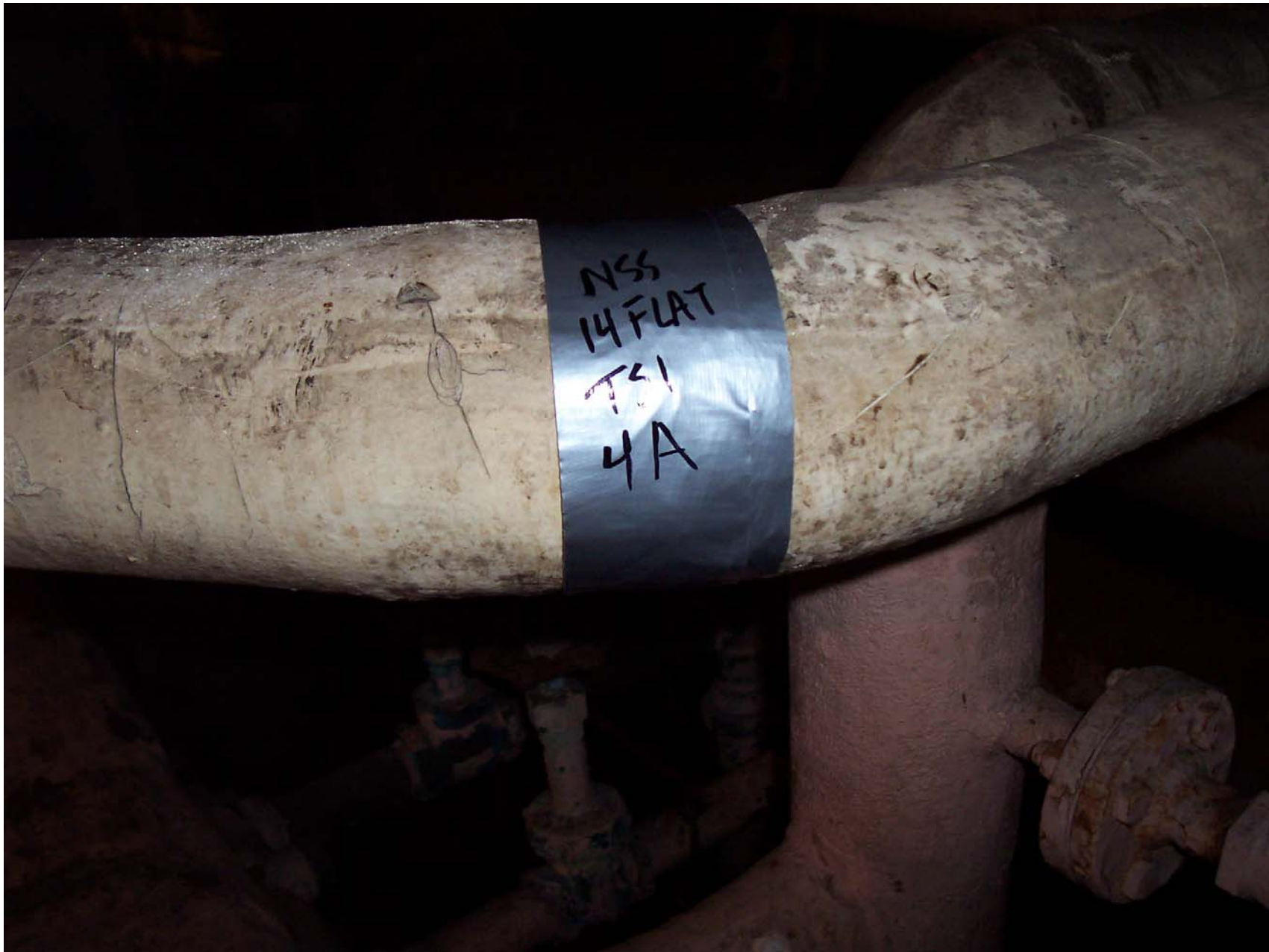
N55
DECK
R151A





NSS
14 FLAT
751
2A





NSS
14 FLAT
T41
4A

NSS
#FLAT
TS1
5A





NSS
14 FLAT
TSI
7A



NSS
14FLAT
TSI
BA

NEA IMPLAT-TSI-9A

P-L.P.

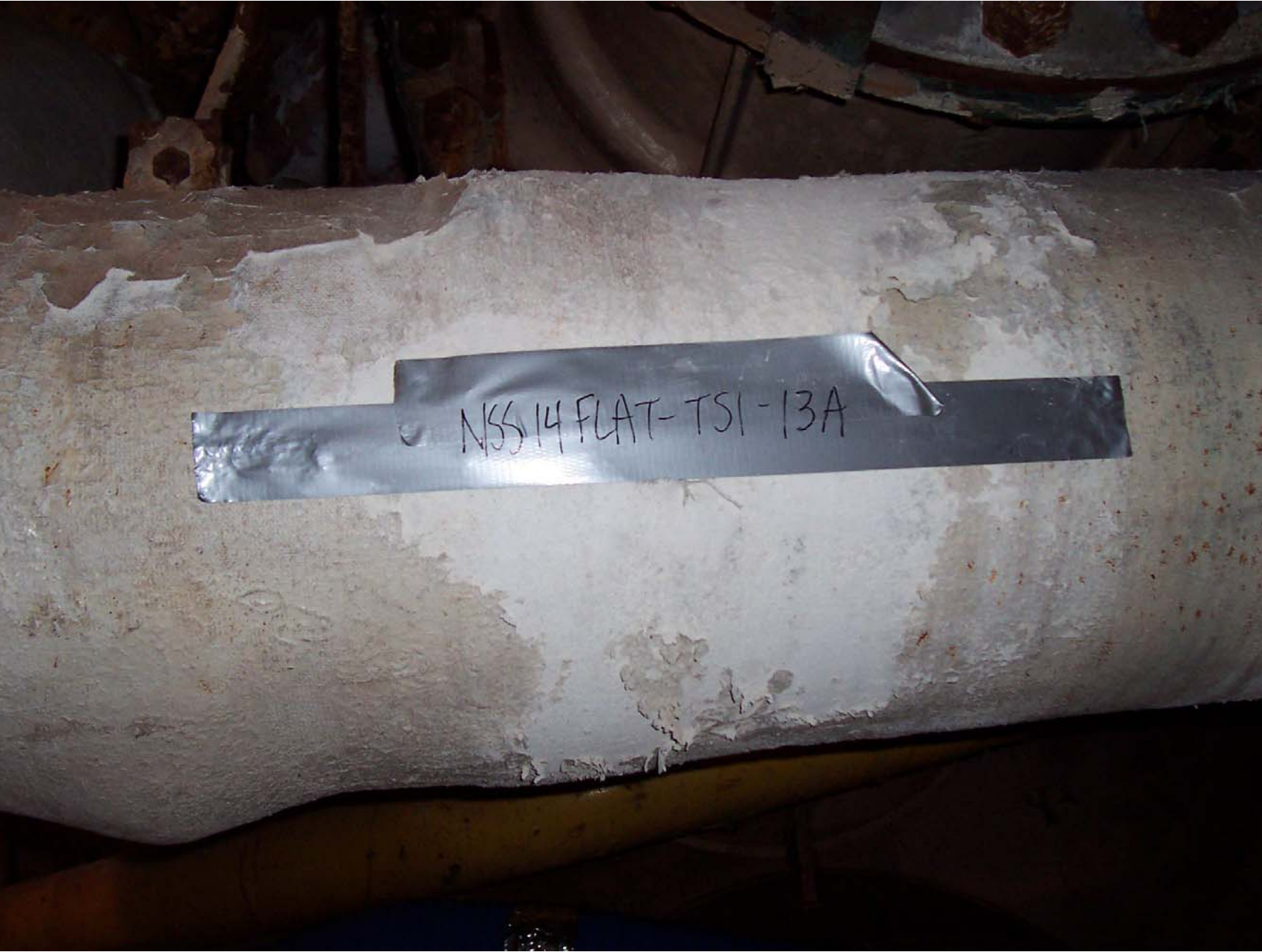
S OVER

NSI 14161 AT-TSI-10A

NBS 14 FLAT TSL 1/A



N5514 FLAT-TSI-12A

A photograph showing a piece of white, fibrous material, possibly a filter or insulation, with a silver tape label. The label has the handwritten text "NSS14 FLAT-TSI-13A" written on it. The background is dark and indistinct.

NSS14 FLAT-TSI-13A







NSSIMFLAT-751
16A



LAST STAGE
FEED WATER
HEATER

NSS14 FLAT
TSI 10A



NSS
14 FLAT
TSI 19A



14/12/14
USS
TS 20A









NSS
14 FLAT
TS124A









NSS-RC-TSI-2A



NSS-RC-TSI-2B

NSS-RC-TSI-2C

NSS-RC-TSI-2C

NSS-RC-TSI-3A

NSS-RC-TSI-3A

NSS-RC-TSI-3B

NSS-RC-TSI-3B

NSS-RC-TSI-3C



NSS-RC-TSI-4B

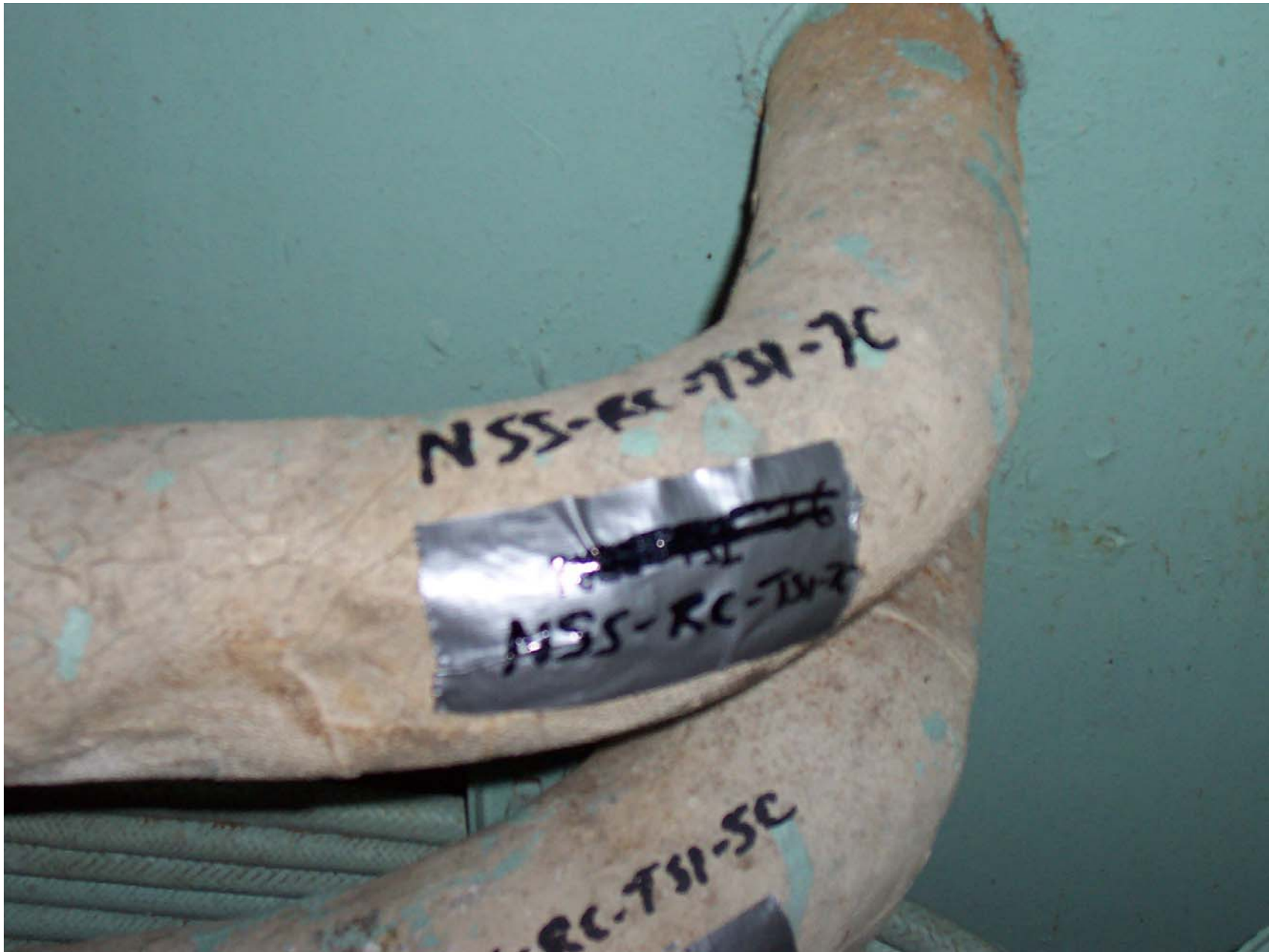
NSS RC - TSI - 4B



N55-RC-T51-5B

NSS-RC-TSI-4C

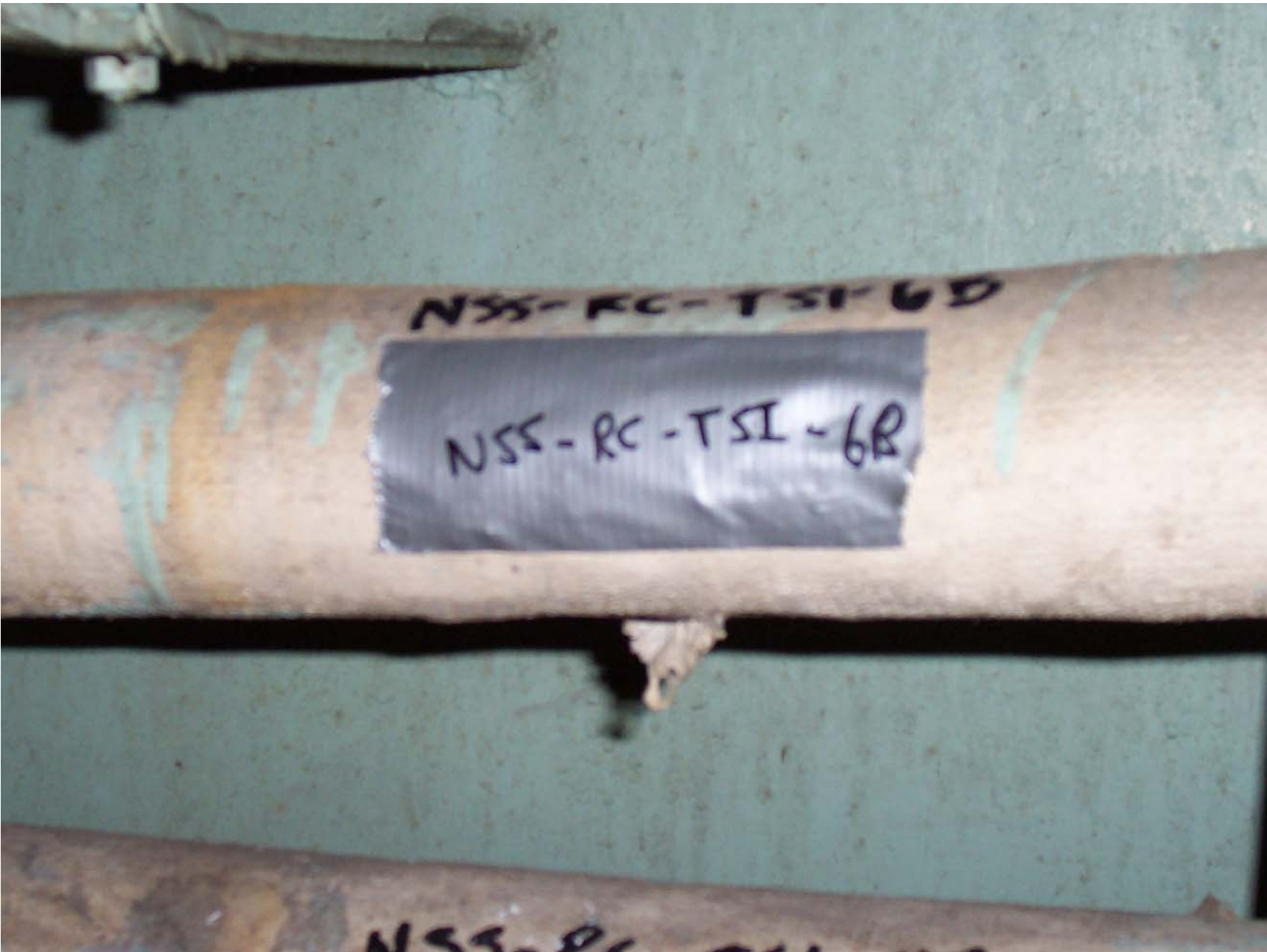
NSS-RC-TSI-4C



NSS-RC-TSI-7C

NSS-RC-TSI-7C

RC-TSI-5C



NSS-RC-TSI 6B

NSS-RC-TSI-6B

NSS-RC-TSI 6B



NSS-RC-TSI-7B

755

NSS-RC-TSI-6C

NSS-RC-TSI-6C

NSS-RC-TSI-8B





A photograph of a cylindrical object, possibly a pipe or a container, with a piece of silver tape and a handwritten label. The label reads "NSS-RC-TSI-8C". The object is light-colored and has some brownish stains. The background is dark and indistinct.

NSS-RC-TSI-8C





NSS-RC-~~SE~~TSI-9A

NSS-RC-T51-8A





NBS-RC-TSI-10A



NSS-RC-TS1-10ZB

P
D
I
I

NSS-RC-TS1-10C



NSS-RC-TSI-11B

NSS-RC-TSI-11B

NSS-RC-

NSS-RC-TSI-M

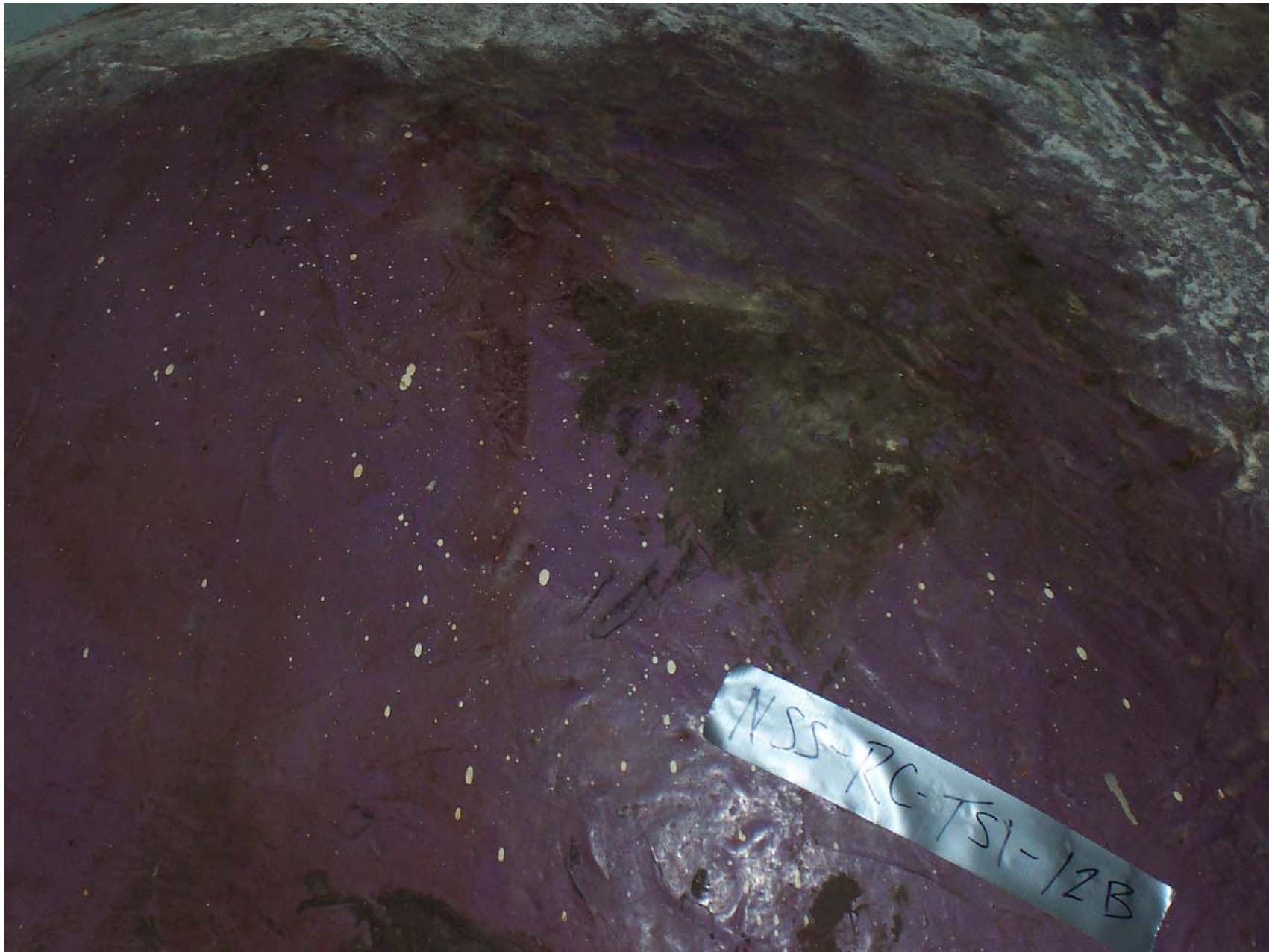


NSS-RE-TS1-12A



NSS-RE-TSI-12A







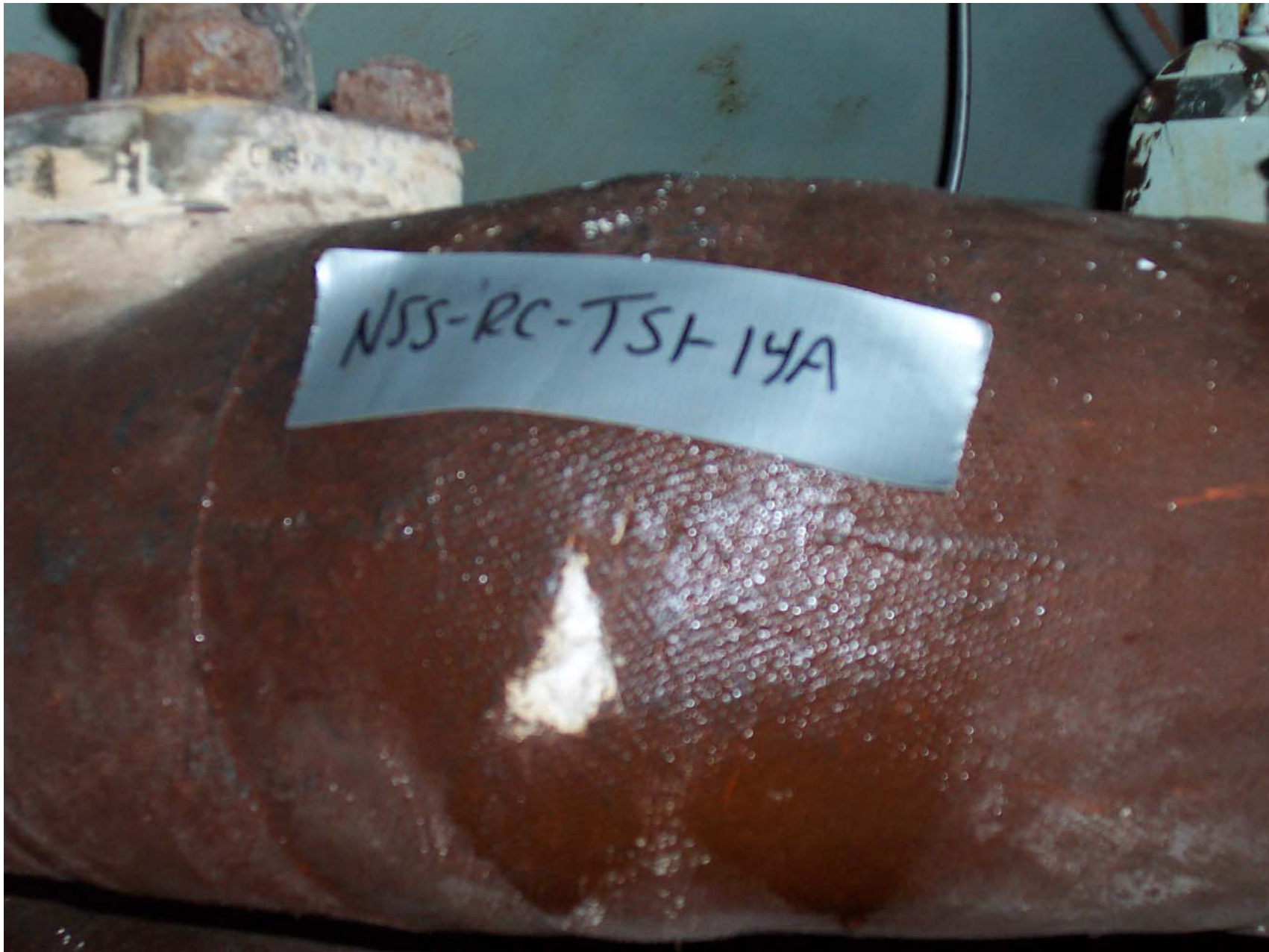


NSS-RC-TSI-13A



NSS-RC-TSI-13B

NSS PE-TSI-13C




NSS-RC-TST-14A







NISS-RC-TSI-12C



NSS-RC-TSI-ISA

NSS-RC-TSI-15B

NSS-RC-TSI-15C

NSS-RC-TSI-17B



NSS-RC-TSI-16A

NSS-RC-TSI-16A

NSS-RC-TSI-17C

NSS-RC-TSI-17C



NSS-RC-TSE-166

NSS-RC-
TSE-166

NSS-RC-TSI-19A



M53-RC-TSI-18C

M53-^{RC}~~RC~~-TSI-18C

NSS-RC-TSI-18B

RC-TSI-18B

NSS-RC 151-16C

NSS-RC-151-16C

151
VT 151-16C



MS-8K-TS1-TA

ADDITIONAL
SERIES

ASS-RE-TSI-19B

ASS-RE-TSI-19B



NSS-RC-TSI-18A

NSS-RC-TSI-18A



NSS-RC-TSI-19C

NSS-RC-TSI-19C



NSS- [unclear] TSI-20C

