

9/5/08

Item
 Project No. 20401

By T. Erickson
M. Clark

<u>SLOT</u>	<u>BST</u>	<u>HI</u>	<u>FS</u>	<u>Elev.</u>
STA 105+380 Hub	1.16			95.98
			<u>97.14</u>	
STA 105+366 Back			<u>1.55</u>	<u>95.59</u>
STA 105+366 Crest			<u>1.77</u>	<u>95.37</u>
STA 105+366 Toe			<u>4.70</u>	<u>92.44</u>
STA 105+370 Back			<u>1.21</u>	<u>95.93</u>
STA 105+370 Crest			<u>1.42</u>	<u>95.72</u>
STA 105+370 Toe			<u>4.62</u>	<u>92.52</u>
STA 105+375 Back			<u>1.10</u>	<u>96.04</u>
STA 105+375 Crest			<u>1.10</u>	<u>96.04</u>
STA 105+375 Toe			<u>4.53</u>	<u>92.61</u>
STA 105+380 Back			<u>1.28</u>	<u>95.86</u>
STA 105+380 Crest			<u>1.35</u>	<u>95.79</u>
STA 105+380 Toe			<u>4.43</u>	<u>92.71</u>

✓ John Steuby
 9/10/08

Project	Bear Tooth Highway
Detail	STA 105+266 → 381.5 Left, Sliver Excavation

Sheet	2
of	6

9/5/08

Item
Project No. 20401

By T. Erickson
M. Clark

SHOT	BST	HT	FS-	Elev
		97.14 ✓		
STA 105+381.5 Back.			1.61 ✓	95.53 ✓
STA 105+381.5 Crest			1.94 ✓	95.20 ✓
STA 105+381.5 Toe			4.35 ✓	92.79 ✓

✓ John H. Steuby
9/10/08

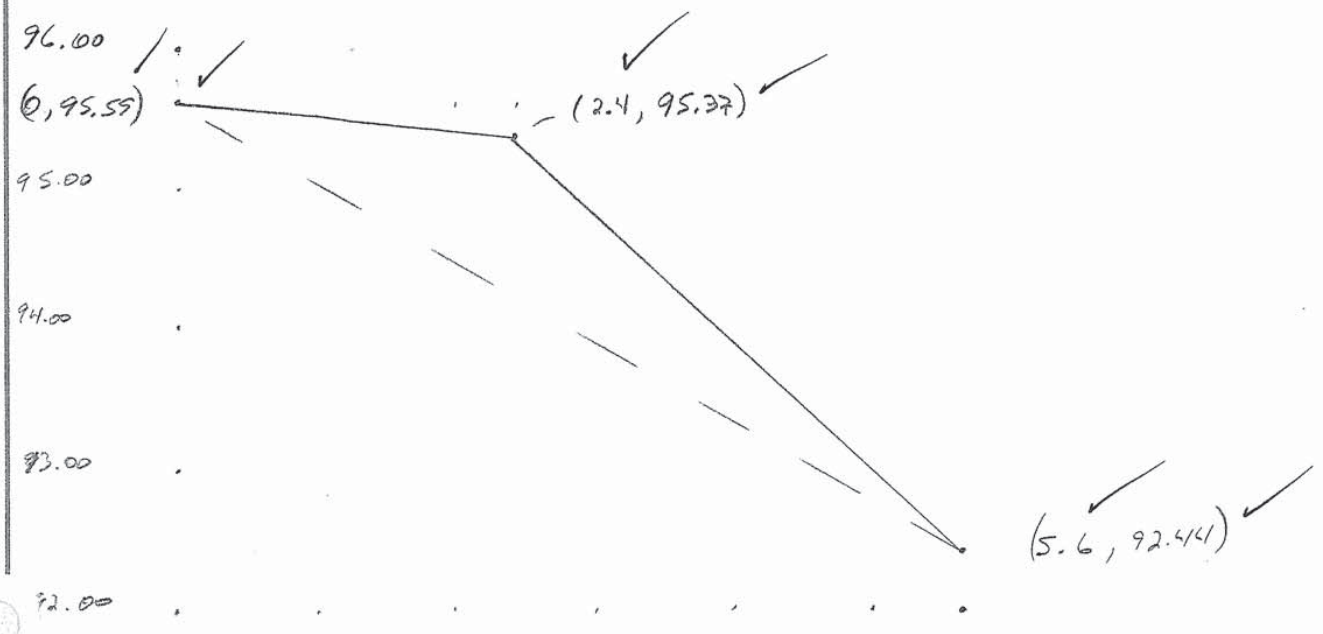
9/5/08

Item
Project No. 20401

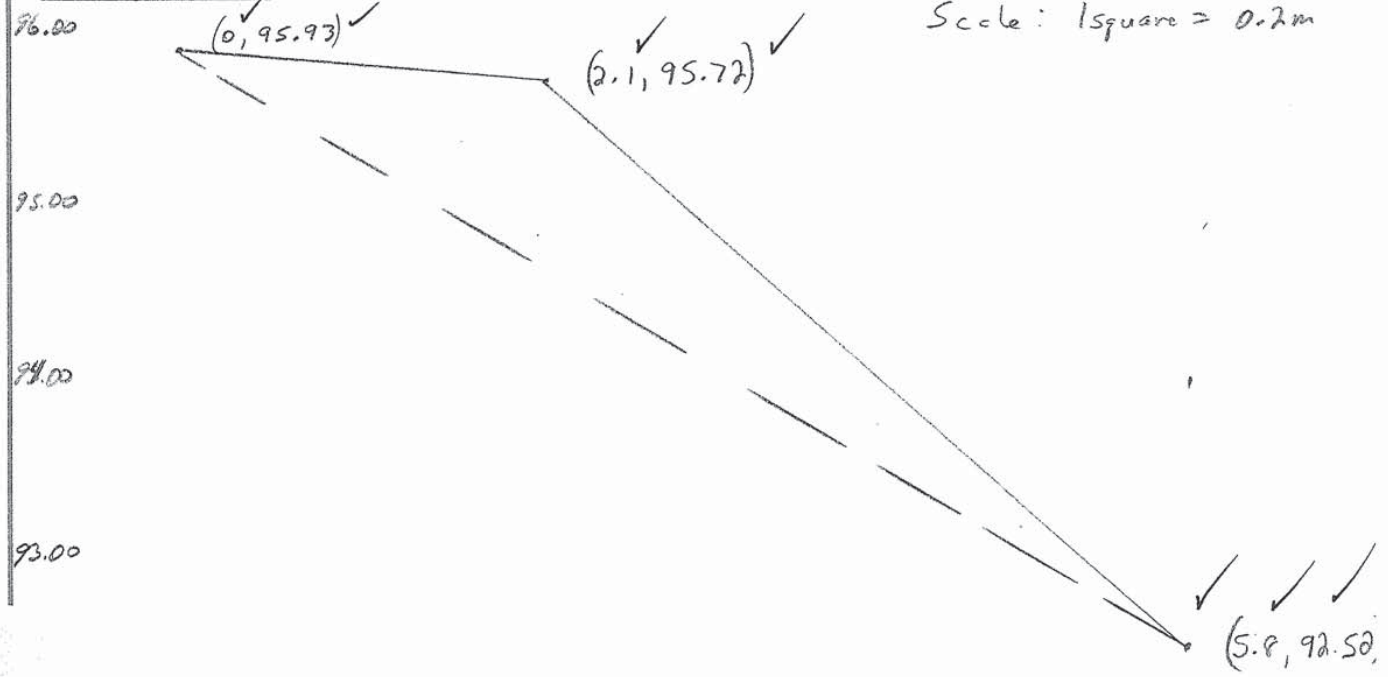
By T. Erickson

Scale: 1 square = 0.25m

STA 105+366



STA 105+370



Scale: 1 square = 0.2m

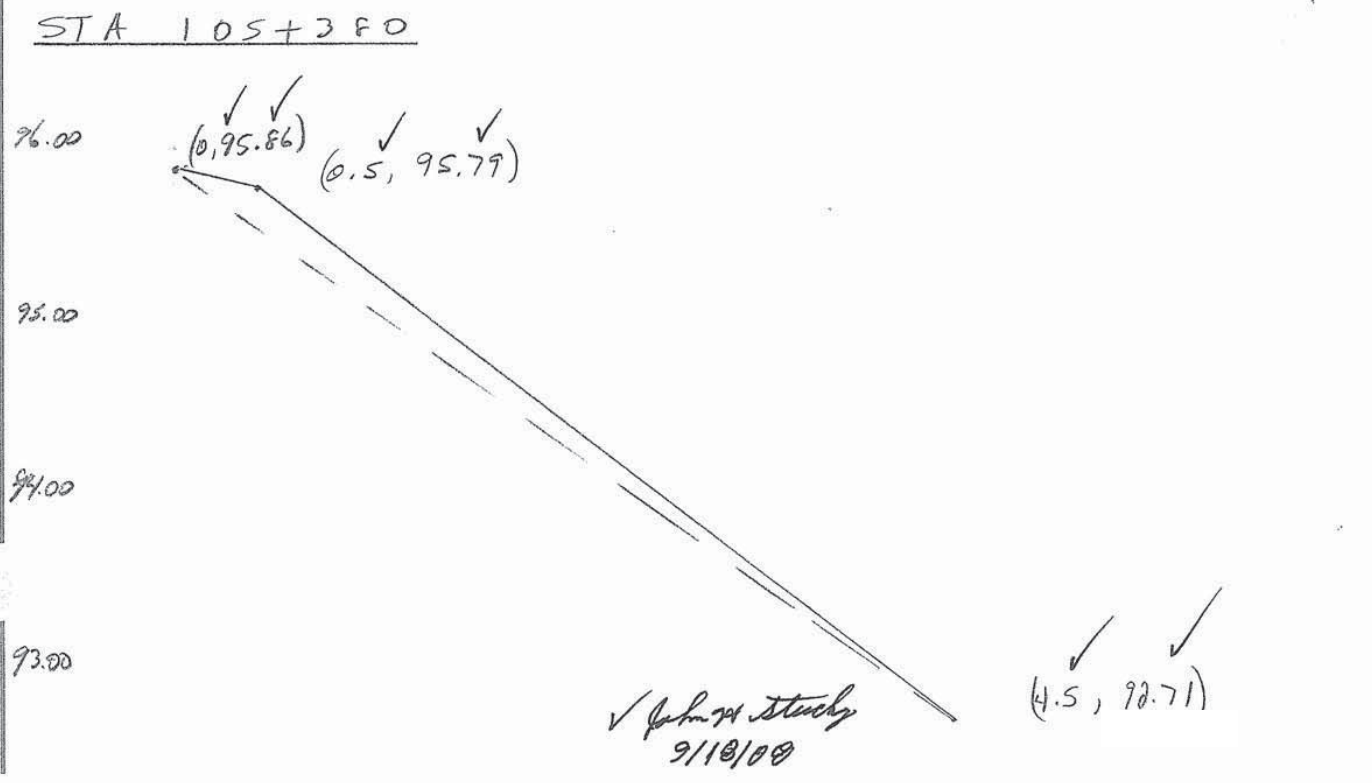
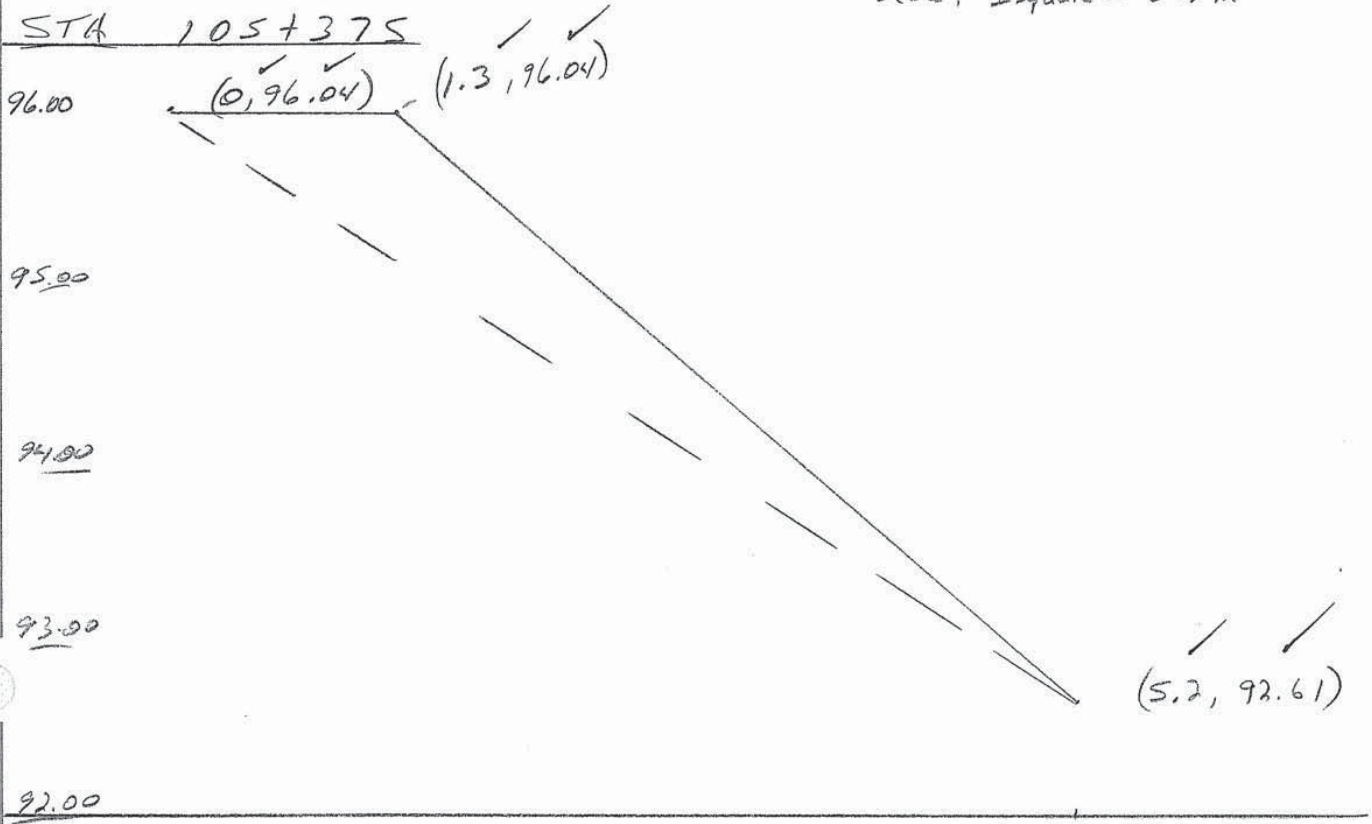
✓ John H. Steuby
9/18/08

Project	Bear Tooth Highway
Detail	STA 105+366 → 381.5 left. Sliver Excavation
Item	
Project No.	20401
By	T. Erickson

Sheet	4
of	6

9/5/08

Scale: 1 Square = 0.2 m



Project Beartooth Highway
Detail STA 105+366 → 381.5 Left, Sliver Excavation

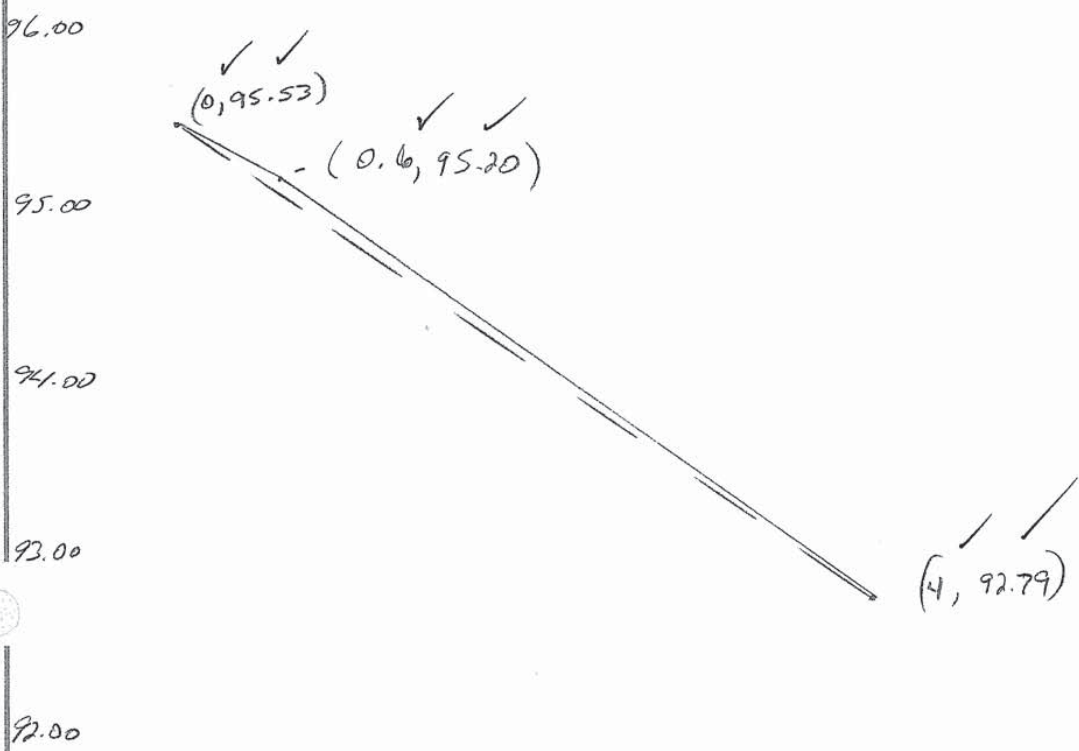
Sheet 5
of 6

9/5/08

From
Project No. 20401

By T. Erickson

STA 105+381.5



✓ John W. Stucky
9/10/08

9/5/08

Itan
 Project No. 20401

By T. Erickson

<u>STATION</u>	<u>DIST (m)</u>	<u>Area (m²)</u>	<u>Avg. Area (m²)</u>	<u>Volume m³</u>
105+366 ✓		3.16 ✓		
	4 ✓		3.07 ✓	12.28 ✓
105+370 ✓		2.97 ✓		
	5 ✓		2.60 ✓	13.00 ✓
105+375 ✓		2.23 ✓		
	5 ✓		1.43 ✓	7.15 ✓
105+380 ✓		0.63 ✓		
	1.5 ✓		0.40 ✓	0.60 ✓
105+381.5 ✓		0.16 ✓		

TOTAL VOLUME = 33.03 ✓ m³

conversion: 33.03 m³ * 1.30795 CUYD/m³ = 43.20 CUYD

Total Volume = 43.20 CUYD

✓ John H. Stueby
 9/18/08