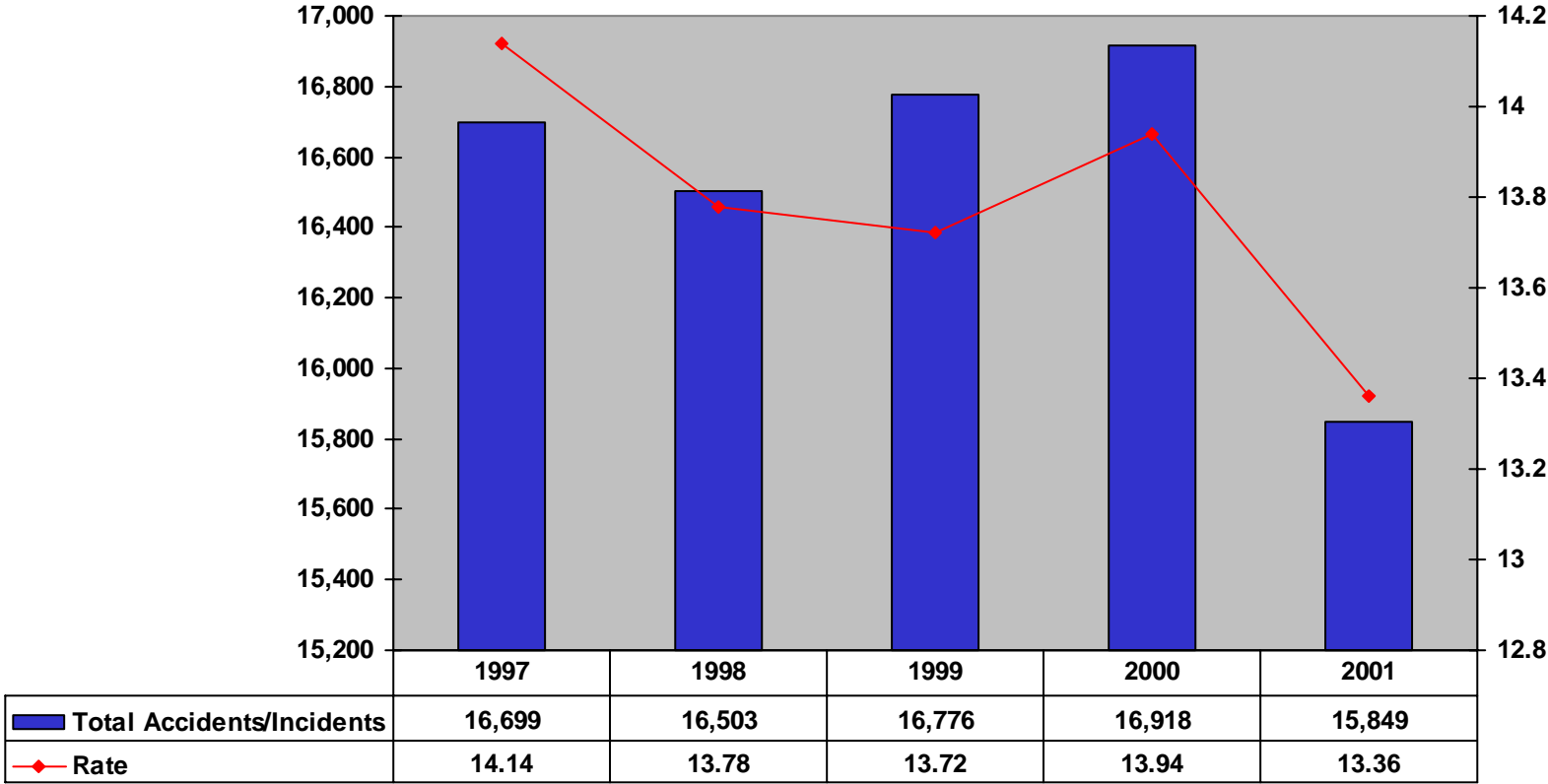
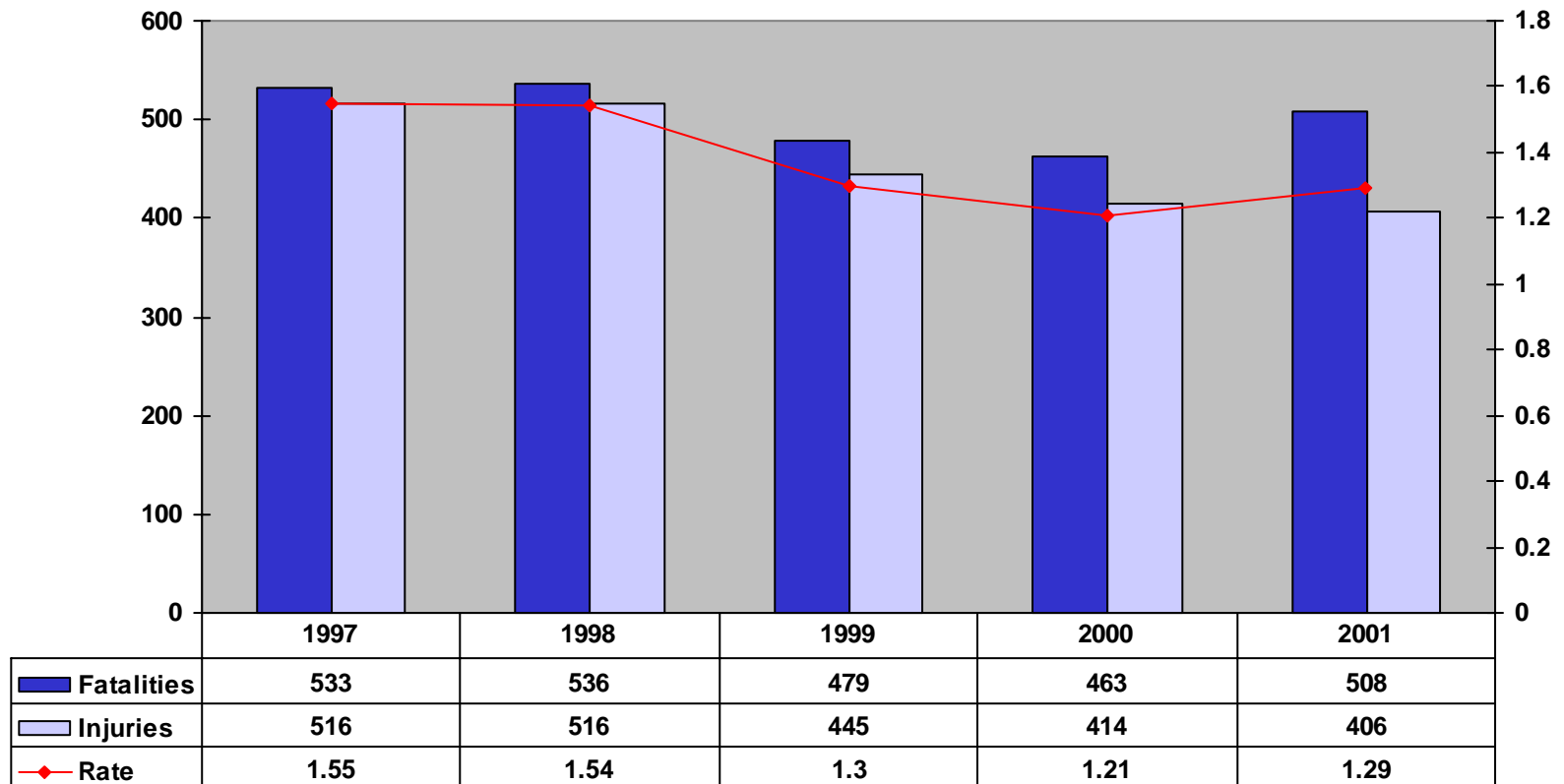


TOTAL ACCIDENTS/INCIDENTS AND RATE 1997-2001



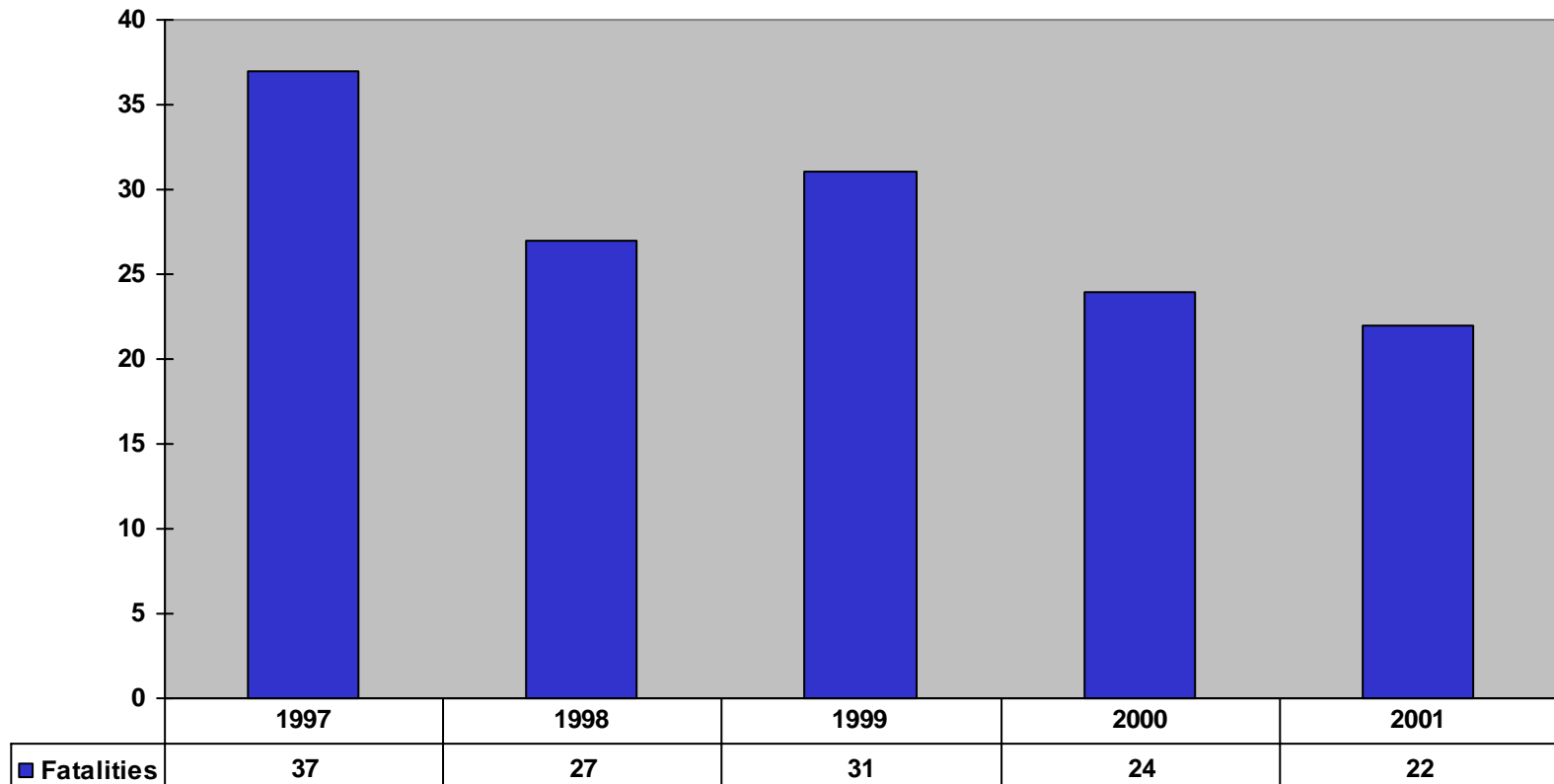
Rate = Total accident/incident rate of all reported events * 1,000,000/(train miles+hours)

TRESPASSER/PEDESTRIAN FATALITIES INJURIES AND RATE 1997-2001

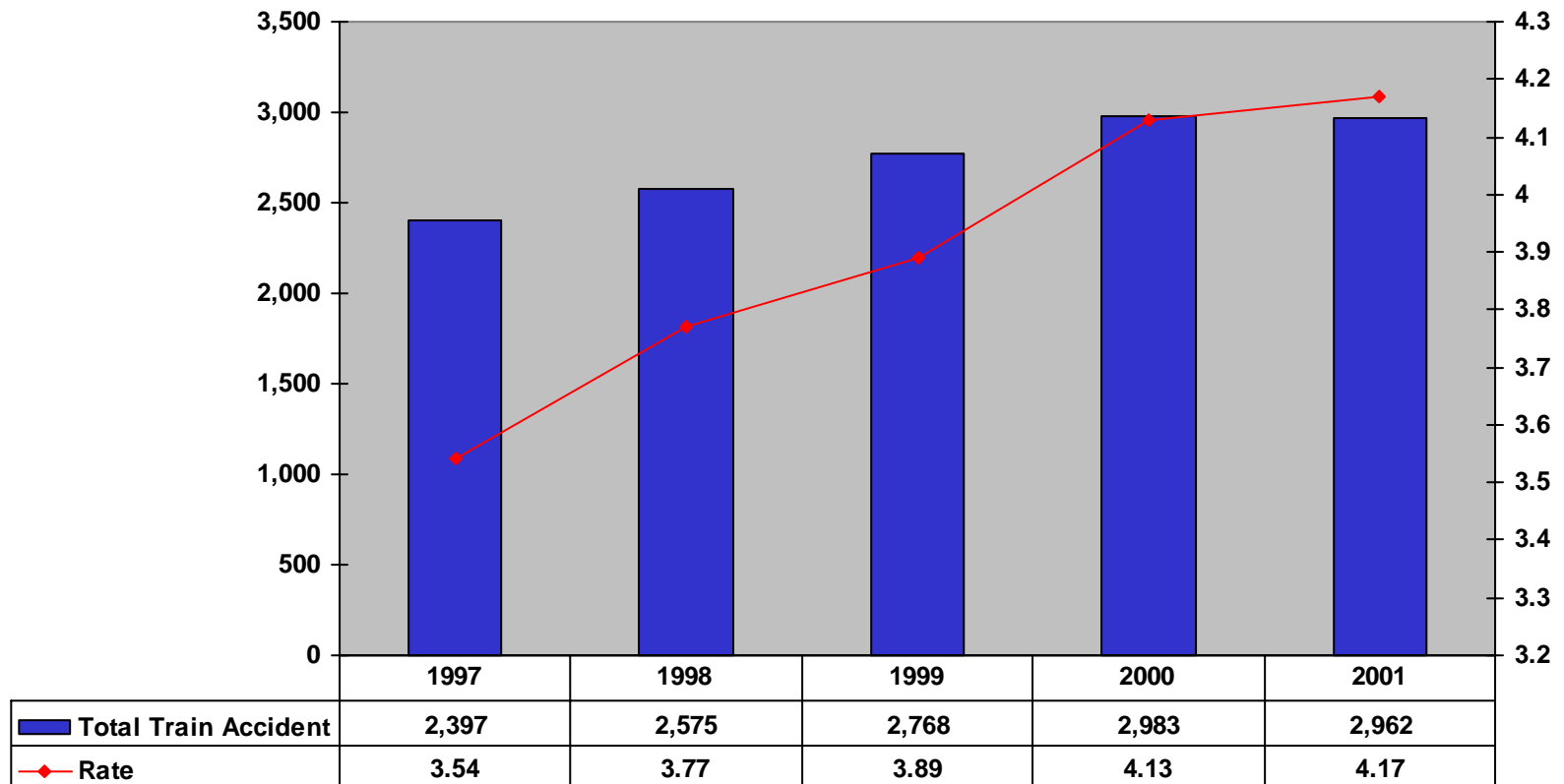


Rate = All trespasser fatalities and injuries * 1,000,000/total train miles

EMPLOYEE ON DUTY FATALITIES 1997-2001

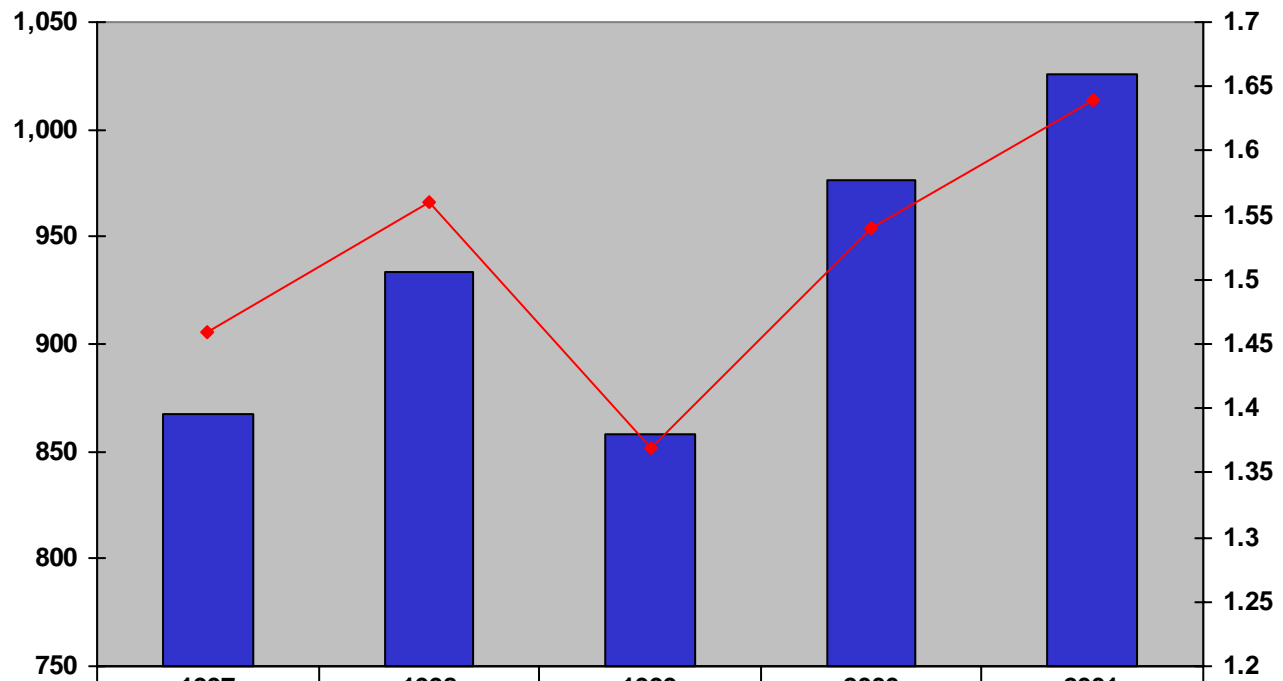


TOTAL TRAIN ACCIDENTS AND RATE 1997-2001



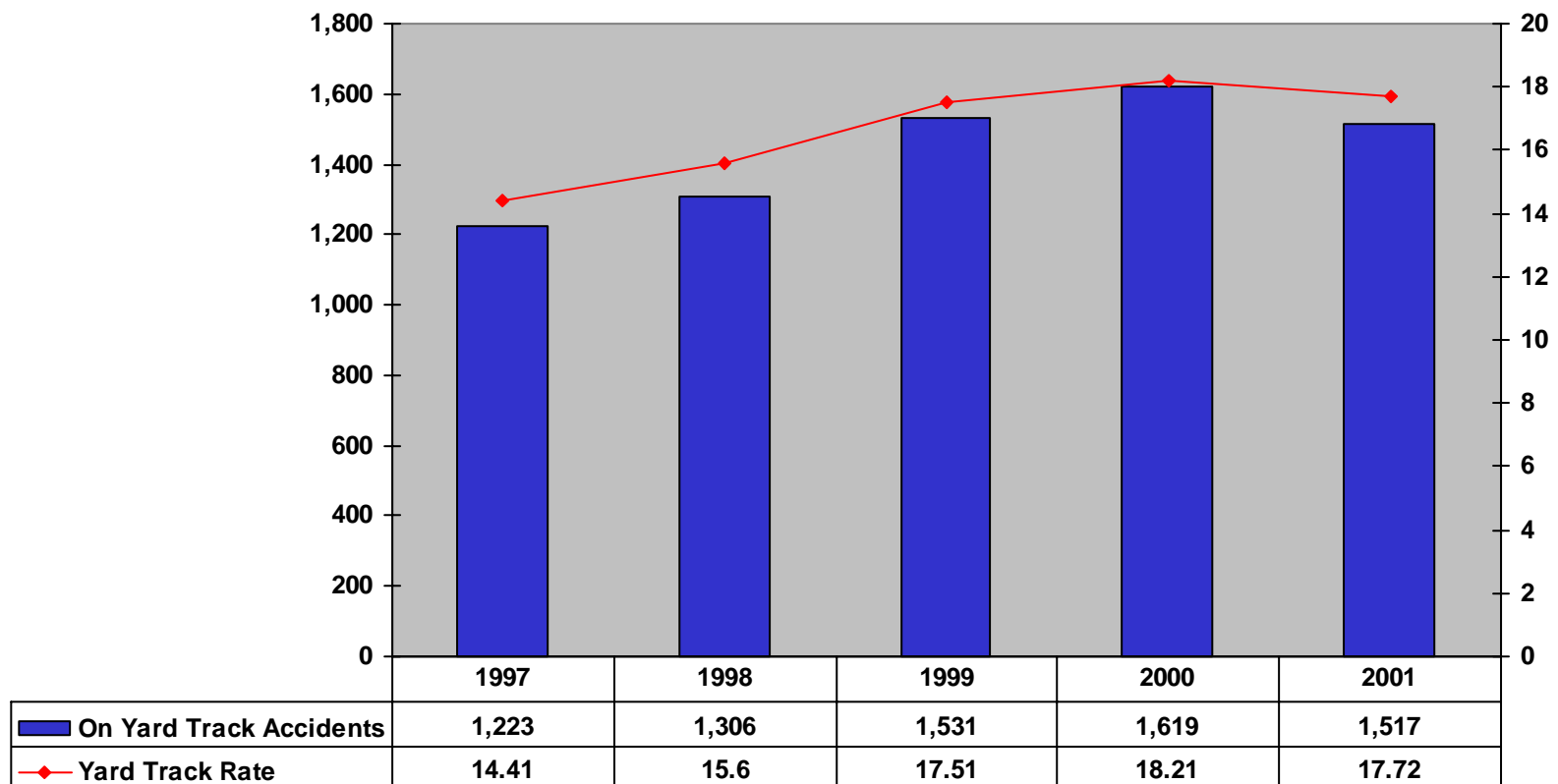
Rate = Total train accidents *
1,000,000 / total train miles

MAIN LINE ACCIDENTS/INCIDENTS AND RATE 1997-2001



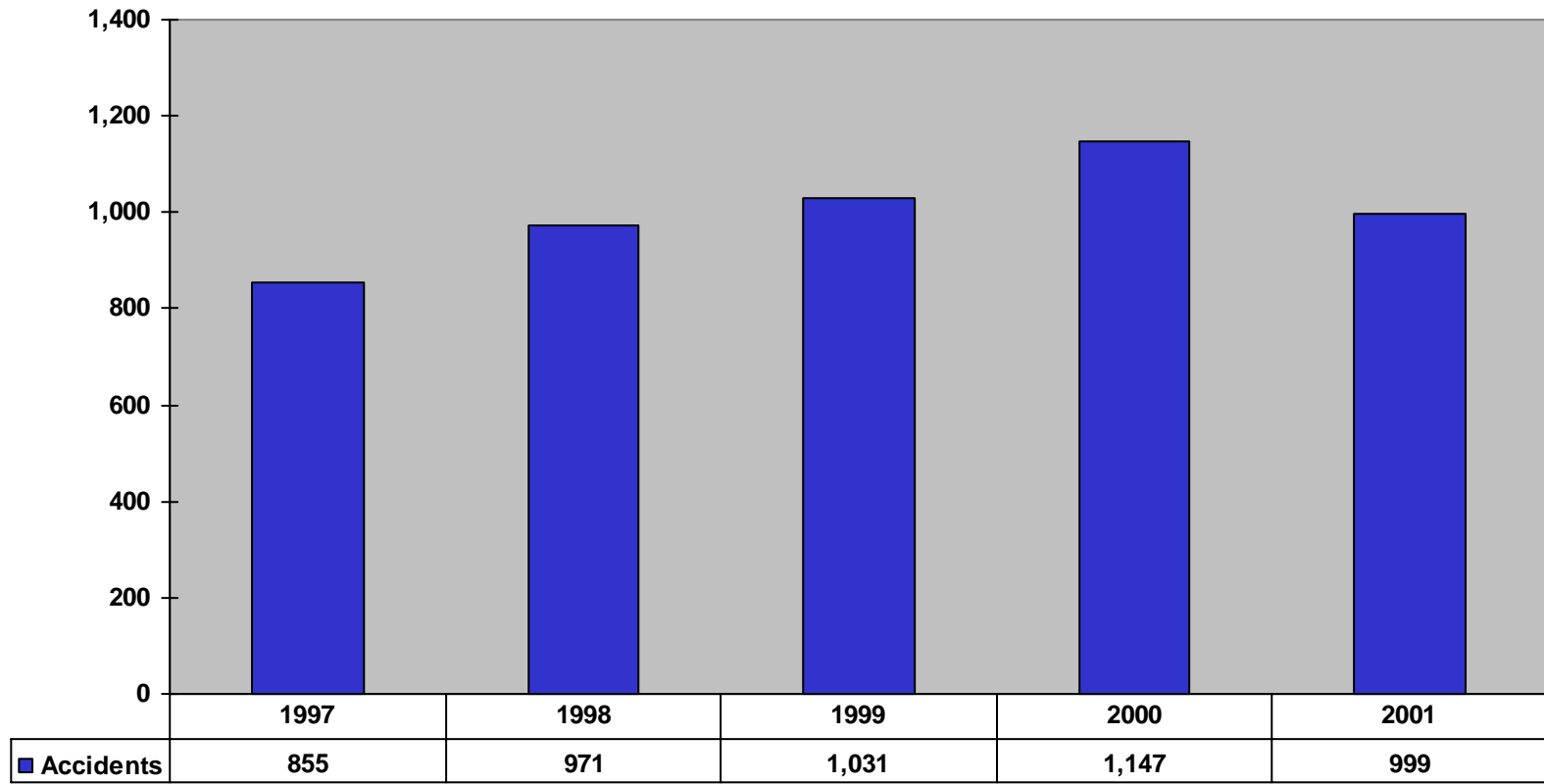
■ Main Line Accidents	867	934	858	976	1,026
◆ Main Line Accident Rate	1.46	1.56	1.37	1.54	1.64

ON YARD TRACK TRAIN ACCIDENTS AND RATE 1997-2001

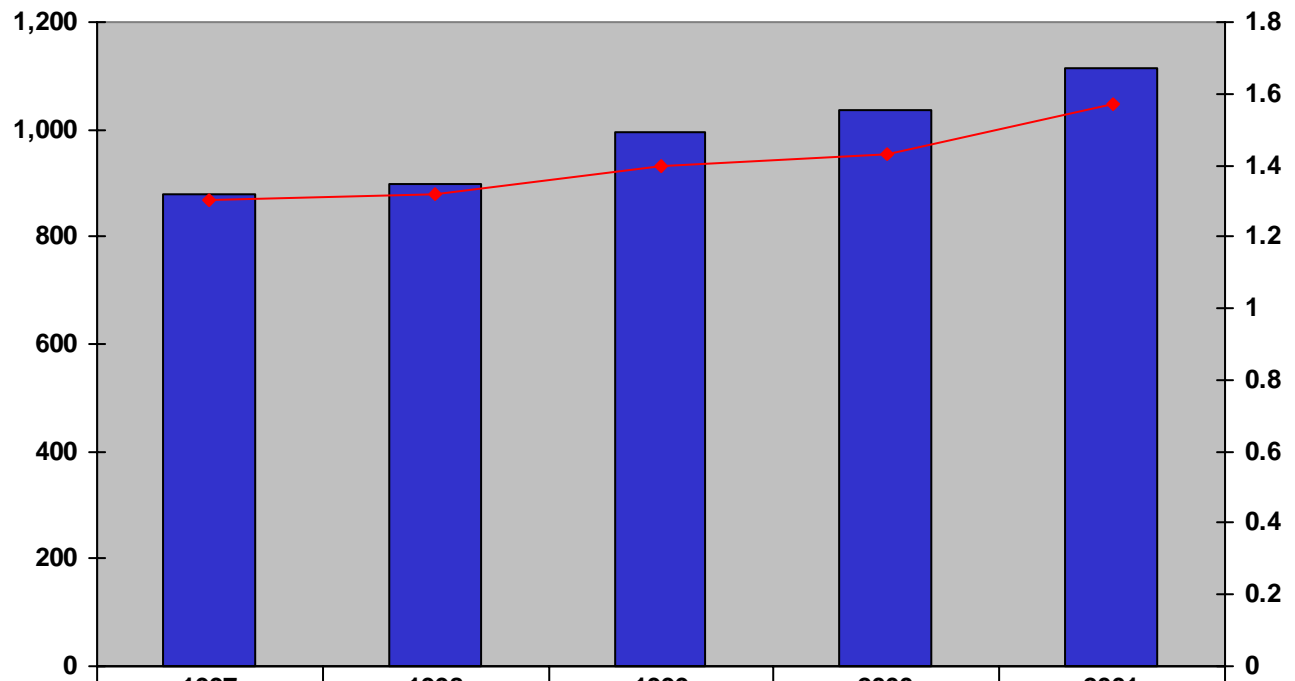




Rate = Accidents on yard track *
1,000,000 / yard switching train miles

HUMAN FACTOR CAUSED TRAIN ACCIDENTS 1997-2001

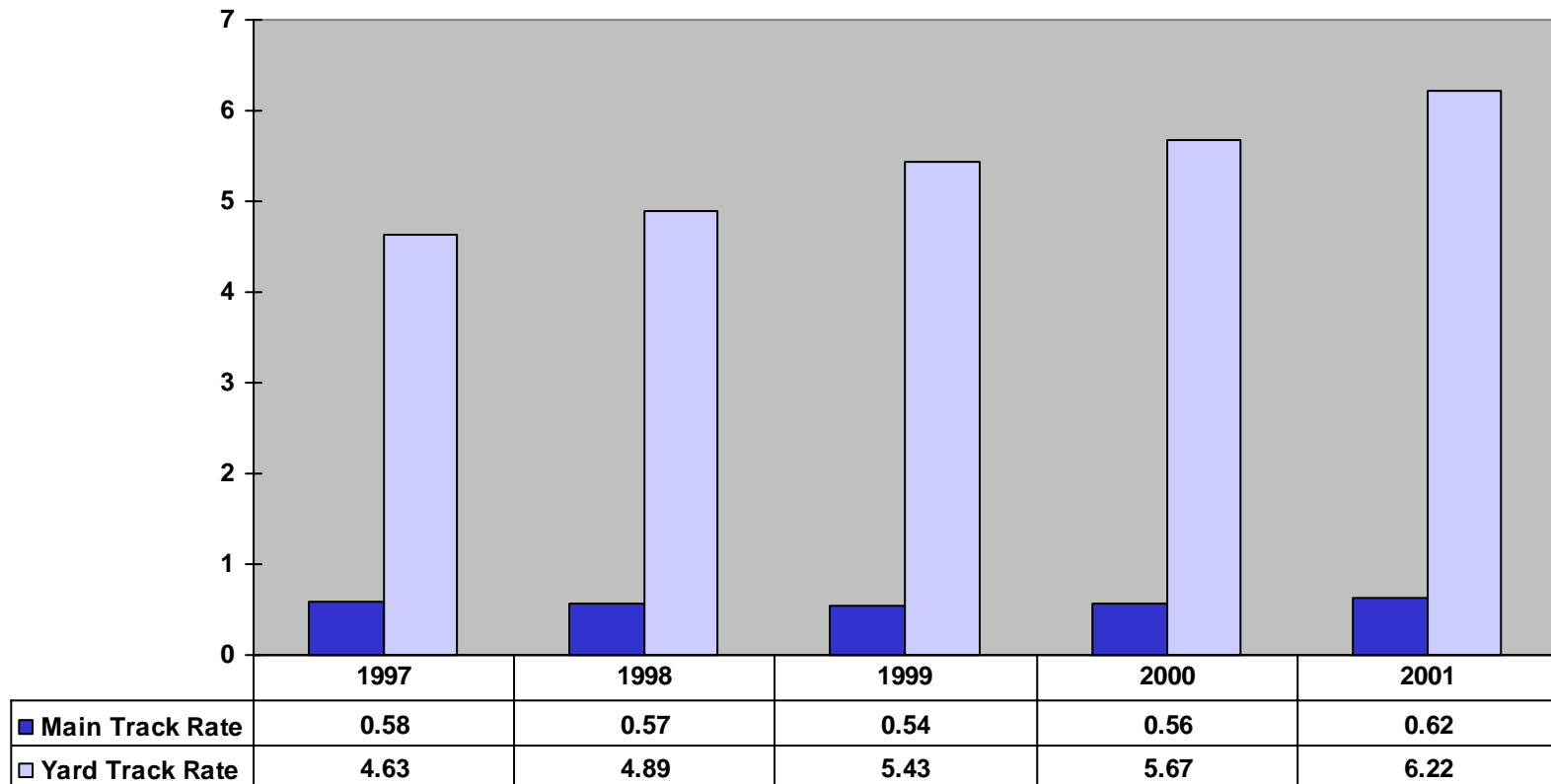


TRACK CAUSED TRAIN ACCIDENTS AND RATE 1997-2001



 Track Caused Accidents	879	900	995	1,035	1,115
 Rate	1.3	1.32	1.4	1.43	1.57

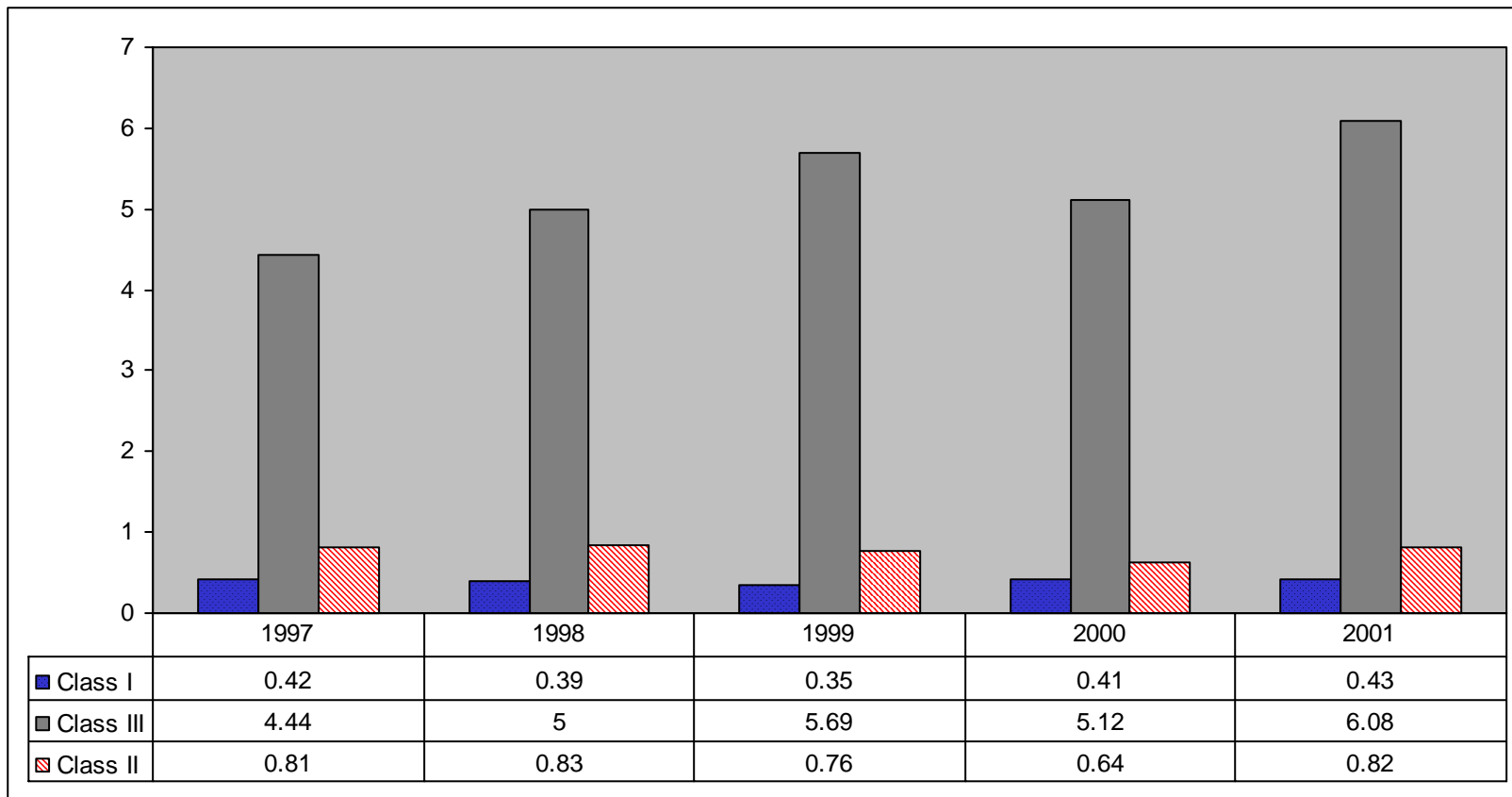
MAIN AND YARD TRACK CAUSED TRAIN ACCIDENTS RATE 1997-2001



Main Track Rate = Accidents on main line track * 1,000,000/(total train miles – yard switching)

Yard Track Rate = Accidents on yard track * 1,000,000/ yard switching train miles

MAIN LINE TRACK CAUSED TRAIN ACCIDENTS BY CLASS 1997-2001



EQUIPMENT CAUSED TRAIN ACCIDENTS 1997-2001

