

CASE NARRATIVE

Laboratory number: 253056
Client: Suisun Bay Reserve Fleet
Location: Stormwater Sampling
Request Date: 02/06/14
Samples Received: 02/06/14

This data package contains sample and QC results for eight water samples, requested for the above referenced project on 02/06/14. The samples were received cold and intact.

TPH-Extractables by GC (EPA 8015B):

Diesel C10-C24 was detected above the RL in the method blank for batch 207972; this analyte was detected in the sample at a level at least 10 times that of the blank. Diesel C10-C24 was detected above the RL in the method blank for batch 207993; this analyte was detected in samples at a level at least 10 times that of the blank. No other analytical problems were encountered.

Metals (EPA 6010B and EPA 7470A):

Low recoveries were observed for zinc in the MS/MSD of METEOR (lab # 253056-001); the BS/BSD were within limits, and the associated RPD was within limits. No other analytical problems were encountered.

Conductivity (SM2510B):

No analytical problems were encountered.

Total Oil & Grease (HEM) (EPA 1664A):

Matrix spikes were not performed for this analysis due to insufficient sample volume. No analytical problems were encountered.

Total Suspended Solids (TSS) (SM2540D):

No analytical problems were encountered.

pH (EPA 9040C):

No analytical problems were encountered.

Low-level Mercury (EPA 1631):

Alpha Analytical Dublin in Dublin, CA performed the analysis (not NELAP certified). Please see the Alpha Analytical Dublin case narrative.

Total Extractable Hydrocarbons			
Lab #:	253056	Location:	Stormwater Sampling
Client:	Suisun Bay Reserve Fleet	Prep:	EPA 3520C
Project#:	STANDARD	Analysis:	EPA 8015B
Matrix:	Water	Sampled:	02/06/14
Units:	ug/L	Received:	02/06/14
Diln Fac:	1.000		

Type: BLANK
 Lab ID: QC727697
 Batch#: 207972
 Prepared: 02/12/14
 Analyzed: 02/13/14

Analyte	Result	RL
Diesel C10-C24	130 b	50
Motor Oil C24-C36	ND	300

Surrogate	%REC	Limits
o-Terphenyl	94	66-129

Type: BLANK
 Lab ID: QC727787
 Batch#: 207993
 Prepared: 02/12/14
 Analyzed: 02/13/14

Analyte	Result	RL
Diesel C10-C24	52 b	50
Motor Oil C24-C36	ND	300

Surrogate	%REC	Limits
o-Terphenyl	82	66-129

Type: BLANK
 Lab ID: QC727955
 Batch#: 208032
 Prepared: 02/13/14
 Analyzed: 02/14/14

Analyte	Result	RL
Diesel C10-C24	ND	50
Motor Oil C24-C36	ND	300

Surrogate	%REC	Limits
o-Terphenyl	93	66-129

b= See narrative
 ND= Not Detected
 RL= Reporting Limit

Batch QC Report

Total Extractable Hydrocarbons			
Lab #:	253056	Location:	Stormwater Sampling
Client:	Suisun Bay Reserve Fleet	Prep:	EPA 3520C
Project#:	STANDARD	Analysis:	EPA 8015B
Matrix:	Water	Batch#:	207972
Units:	ug/L	Prepared:	02/12/14
Diln Fac:	1.000	Analyzed:	02/13/14

Type: BS Lab ID: QC727698

Analyte	Spiked	Result	%REC	Limits
Diesel C10-C24	2,500	1,787	71	61-120

Surrogate	%REC	Limits
o-Terphenyl	115	66-129

Type: BSD Lab ID: QC727699

Analyte	Spiked	Result	%REC	Limits	RPD	Lim
Diesel C10-C24	2,500	1,782	71	61-120	0	45

Surrogate	%REC	Limits
o-Terphenyl	121	66-129

Batch QC Report

Total Extractable Hydrocarbons			
Lab #:	253056	Location:	Stormwater Sampling
Client:	Suisun Bay Reserve Fleet	Prep:	EPA 3520C
Project#:	STANDARD	Analysis:	EPA 8015B
Matrix:	Water	Batch#:	207993
Units:	ug/L	Prepared:	02/12/14
Diln Fac:	1.000	Analyzed:	02/13/14

Type: BS Lab ID: QC727788

Analyte	Spiked	Result	%REC	Limits
Diesel C10-C24	2,500	1,690	68	61-120

Surrogate	%REC	Limits
o-Terphenyl	91	66-129

Type: BSD Lab ID: QC727789

Analyte	Spiked	Result	%REC	Limits	RPD	Lim
Diesel C10-C24	2,500	1,943	78	61-120	14	45

Surrogate	%REC	Limits
o-Terphenyl	88	66-129

Batch QC Report

Total Extractable Hydrocarbons			
Lab #:	253056	Location:	Stormwater Sampling
Client:	Suisun Bay Reserve Fleet	Prep:	EPA 3520C
Project#:	STANDARD	Analysis:	EPA 8015B
Matrix:	Water	Batch#:	208032
Units:	ug/L	Prepared:	02/13/14
Diln Fac:	1.000	Analyzed:	02/14/14

Type: BS Lab ID: QC727956

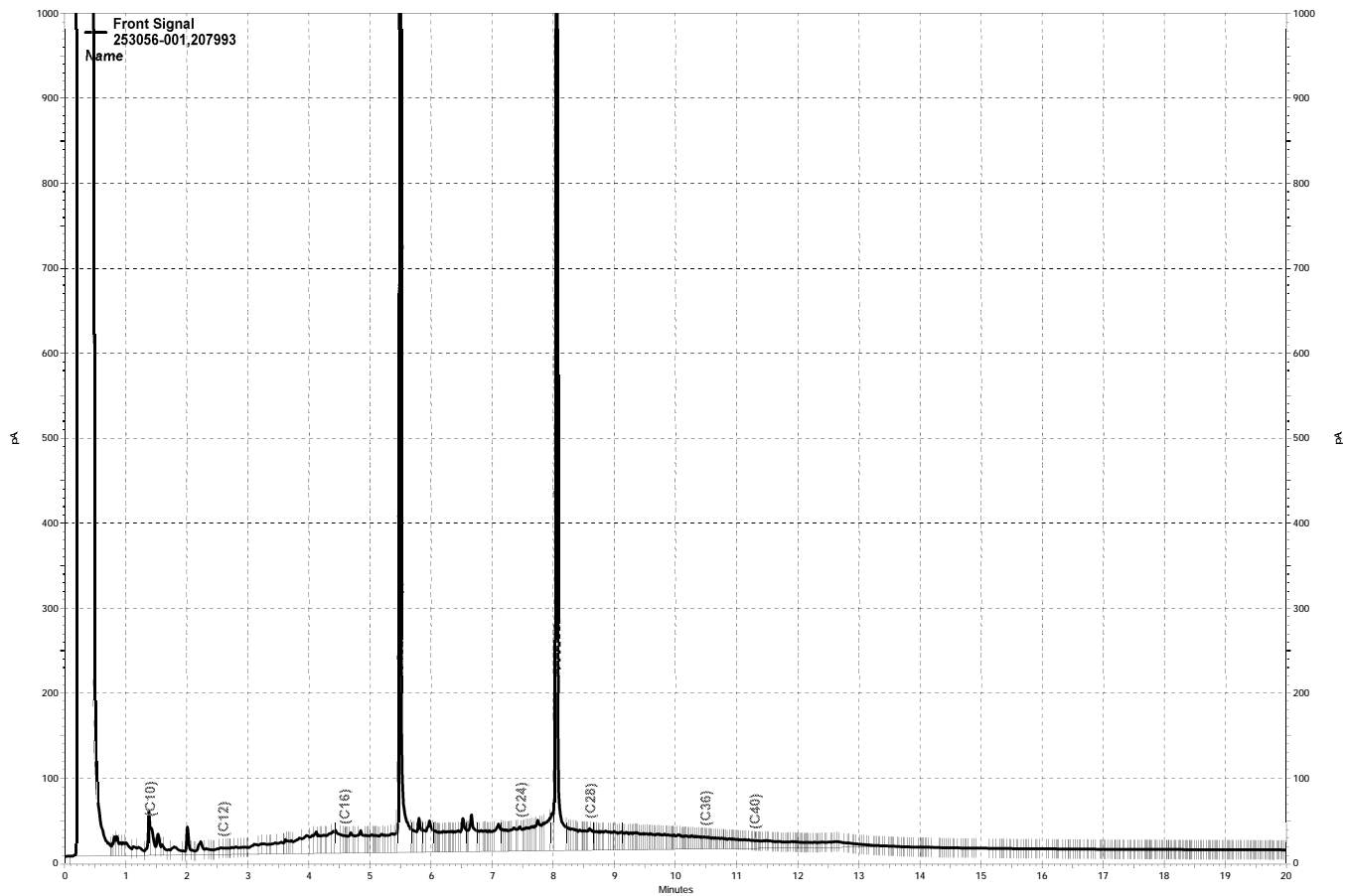
Analyte	Spiked	Result	%REC	Limits
Diesel C10-C24	2,500	2,335	93	61-120

Surrogate	%REC	Limits
o-Terphenyl	99	66-129

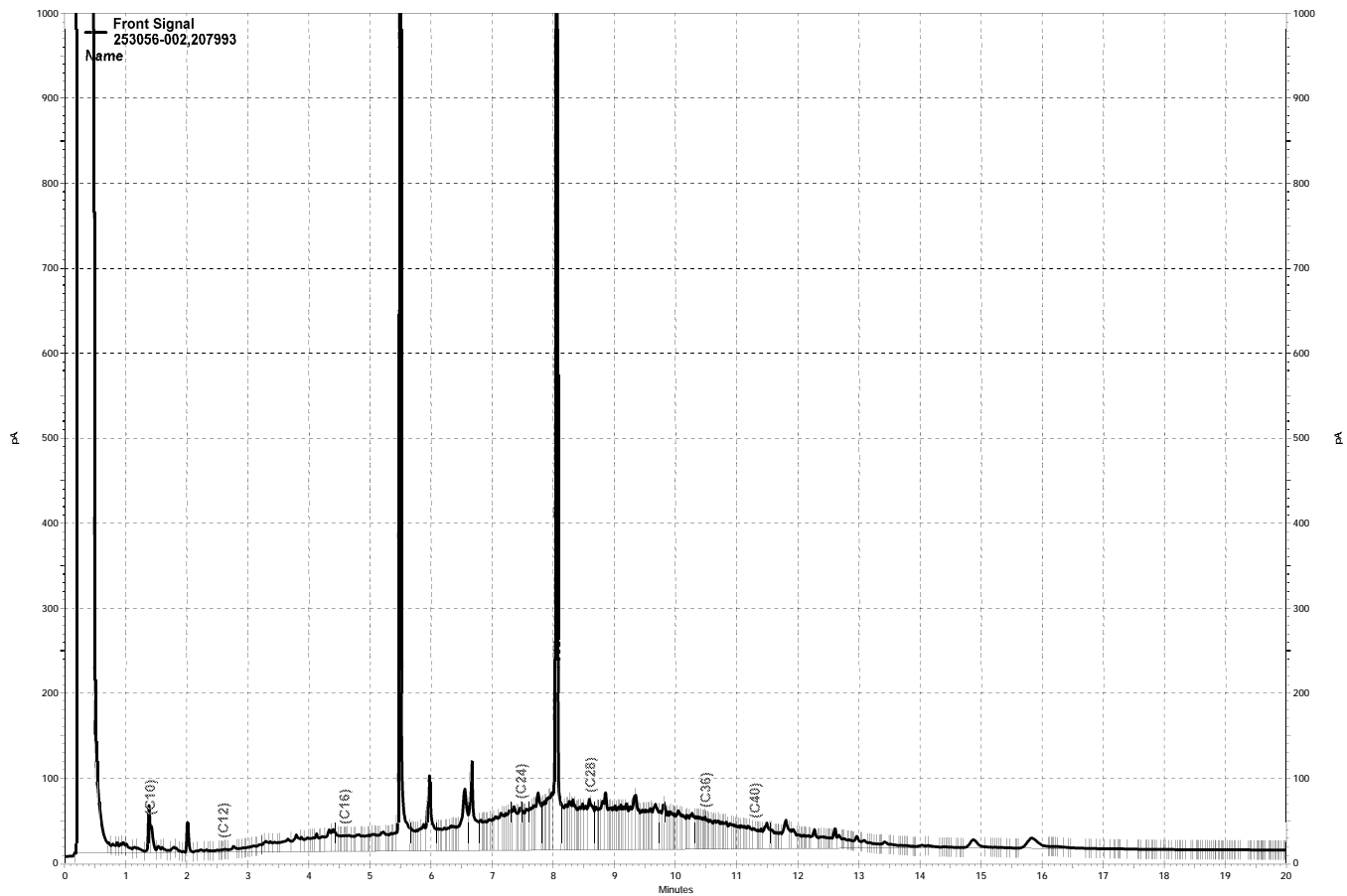
Type: BSD Lab ID: QC727957

Analyte	Spiked	Result	%REC	Limits	RPD	Lim
Diesel C10-C24	2,500	1,946	78	61-120	18	45

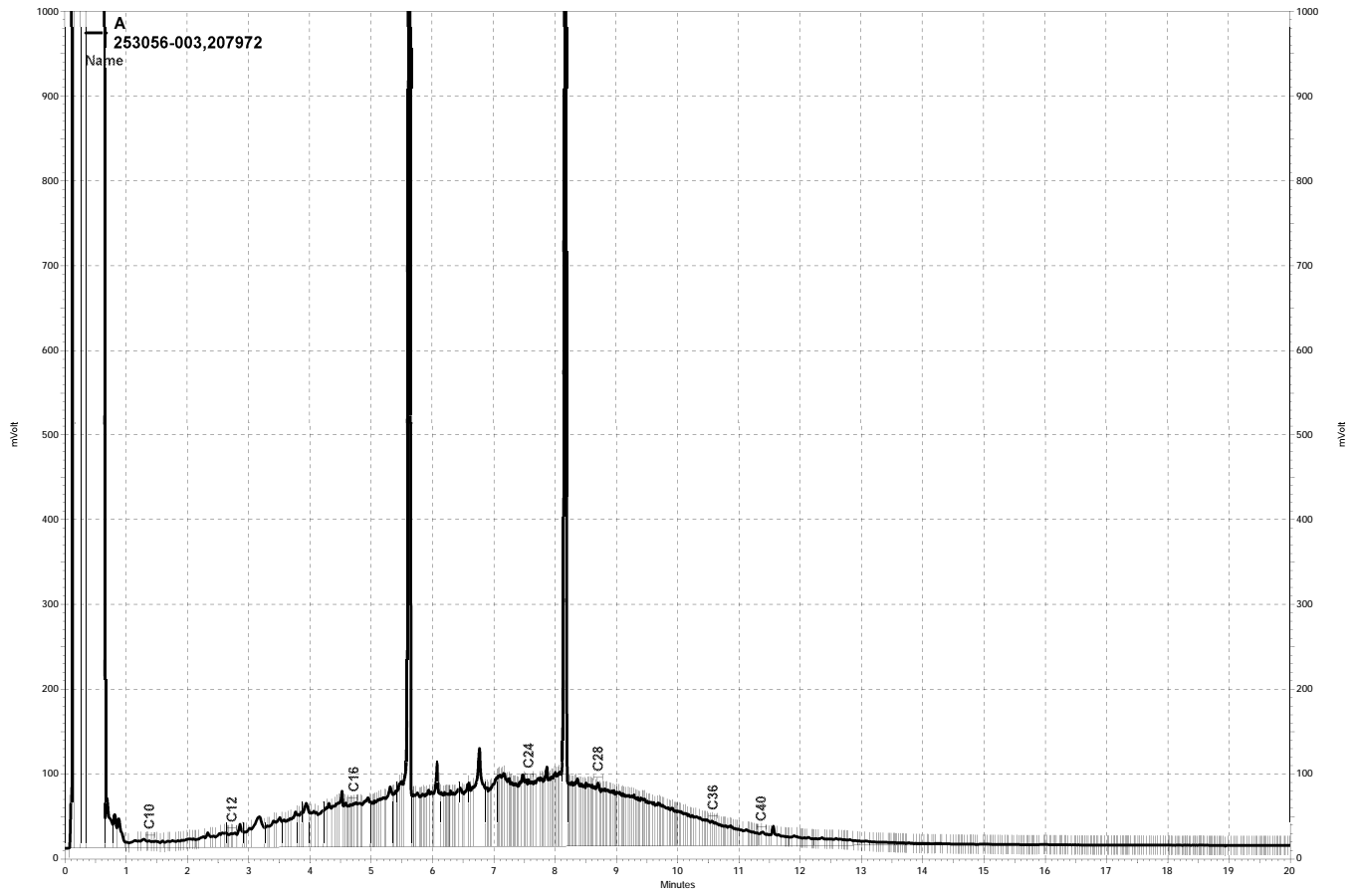
Surrogate	%REC	Limits
o-Terphenyl	86	66-129



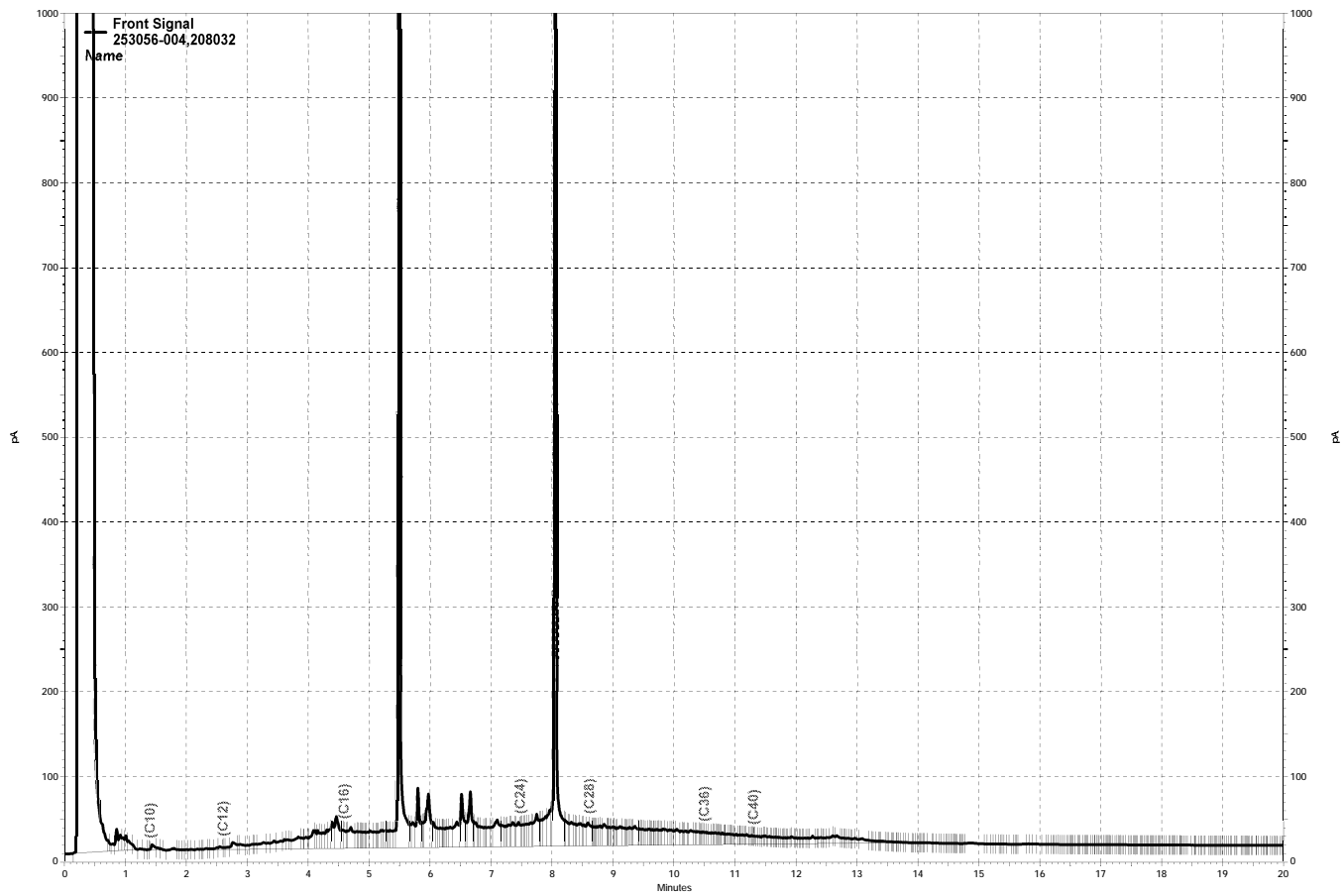
— \\lms\gdrive\ezchrom\Projects\GC27\Data\044a021.dat, Front Signal



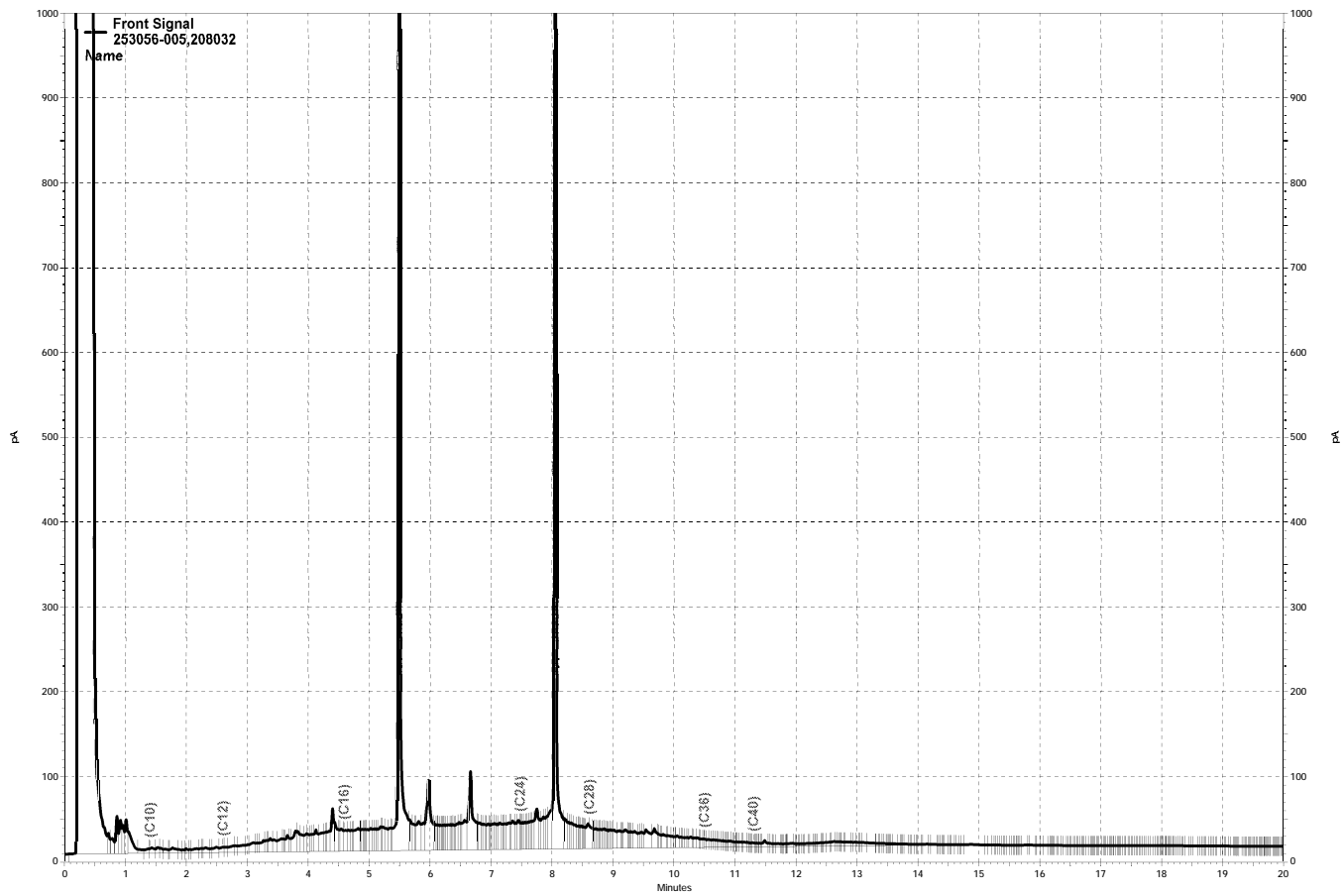
— \\lms\gdrive\ezchrom\Projects\GC27\Data\044a022.dat, Front Signal



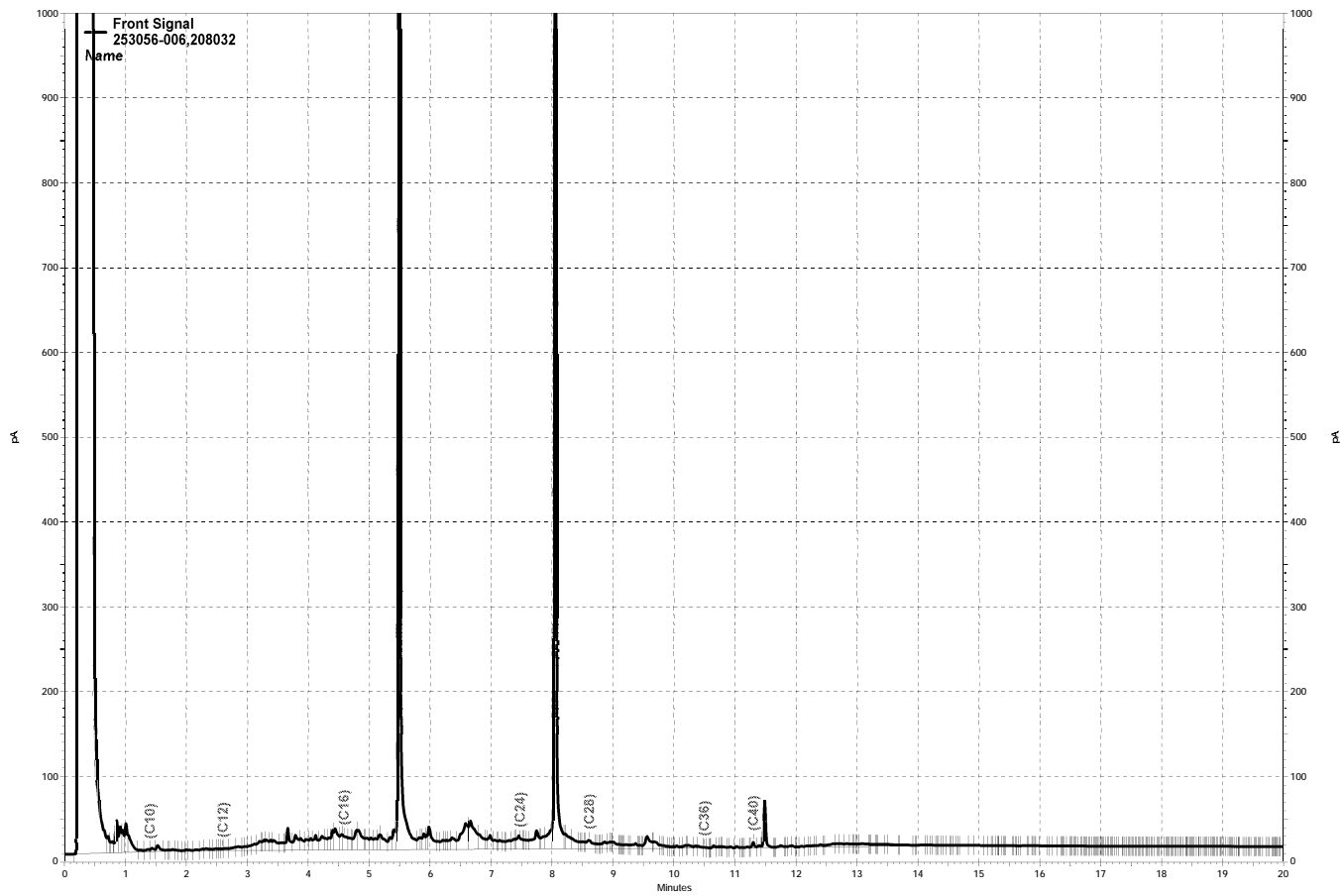
— \\Lims\gdrive\ezchrom\Projects\GC26\Data\044a009, A



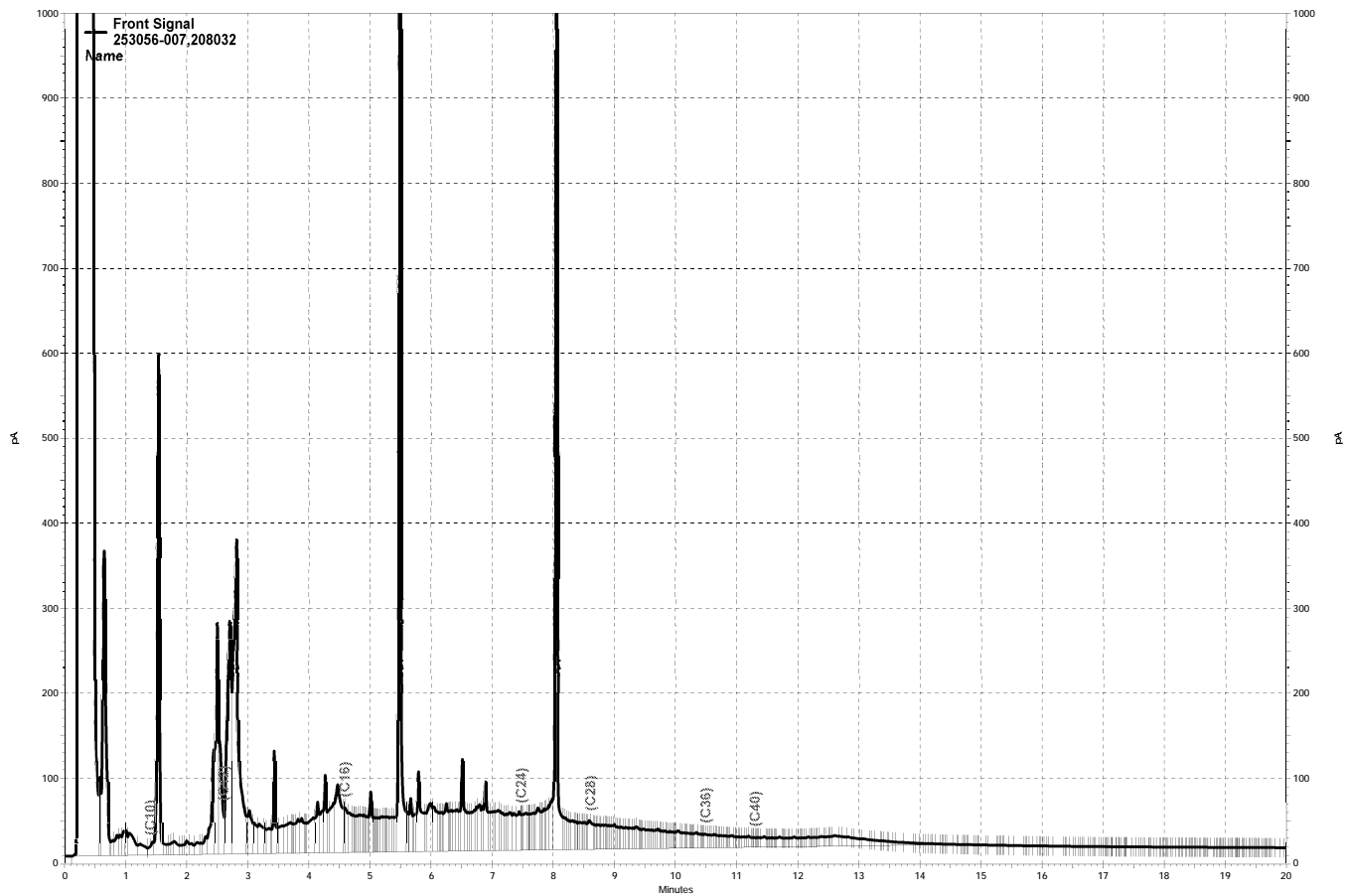
— \\lms\gdrive\ezchrom\Projects\GC27\Data\049a022.dat, Front Signal



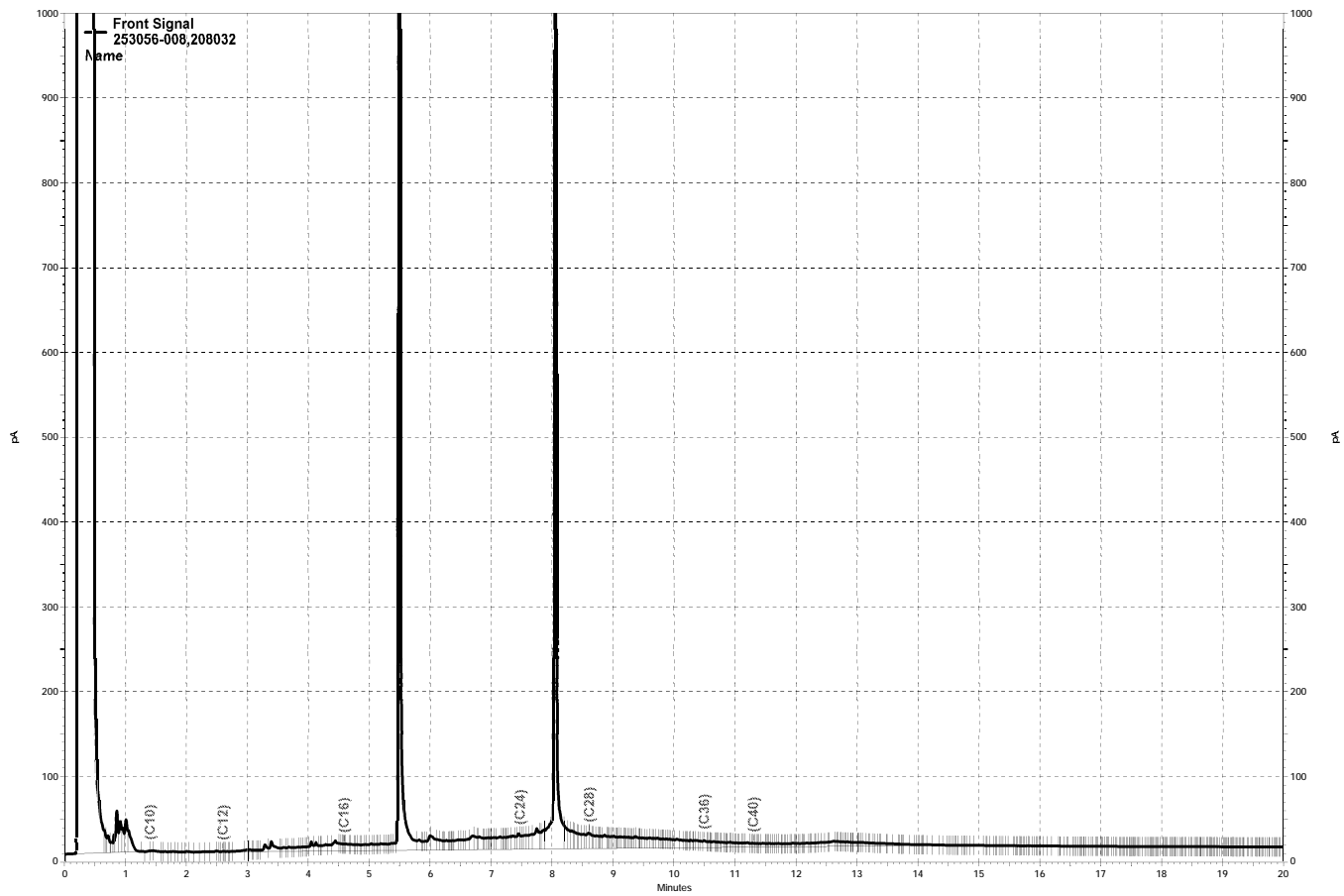
— \\lms\gdrive\ezchrom\Projects\GC27\Data\049a023.dat, Front Signal



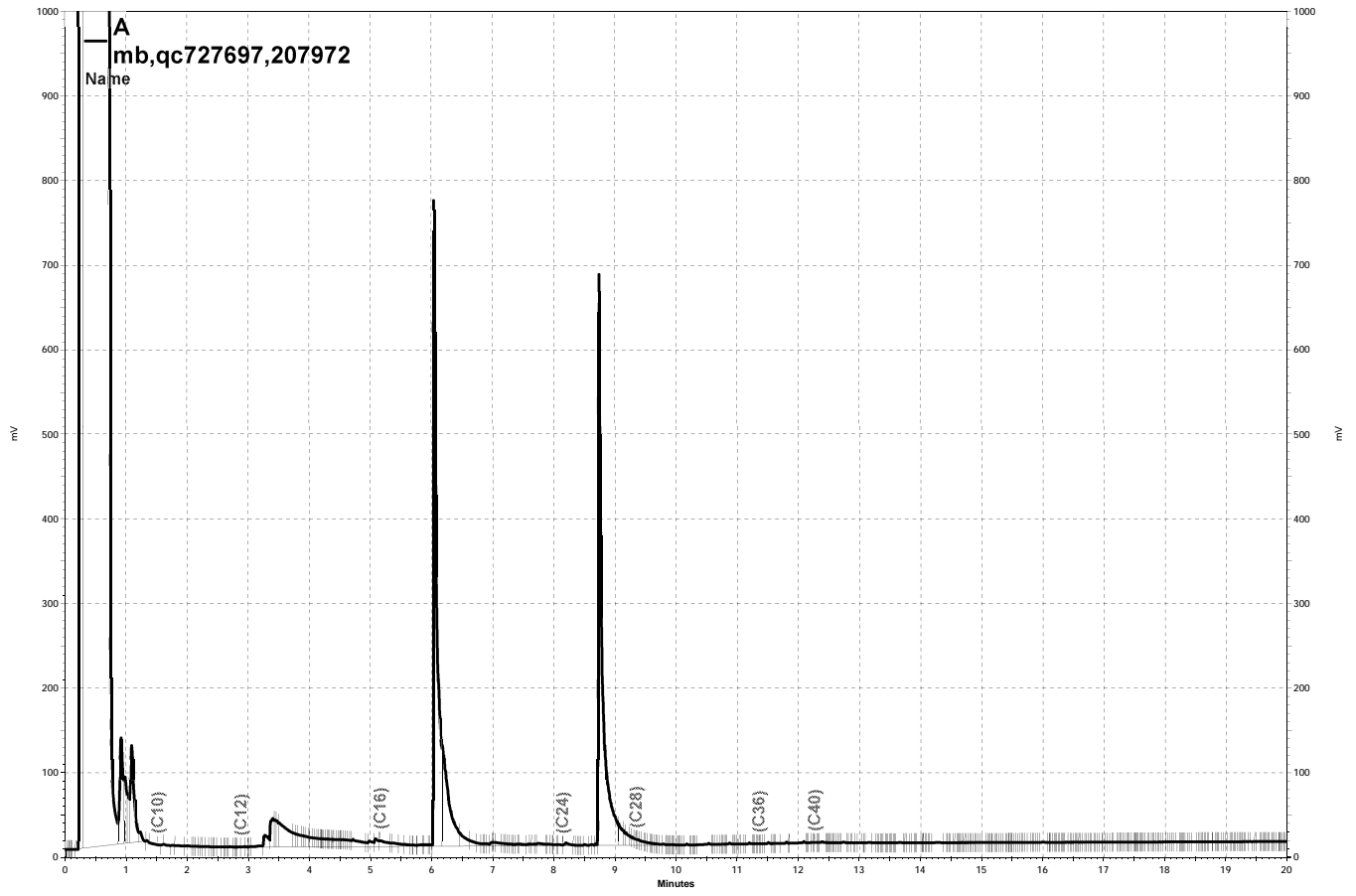
— \\lms\gdrive\ezchrom\Projects\GC27\Data\049a024.dat, Front Signal



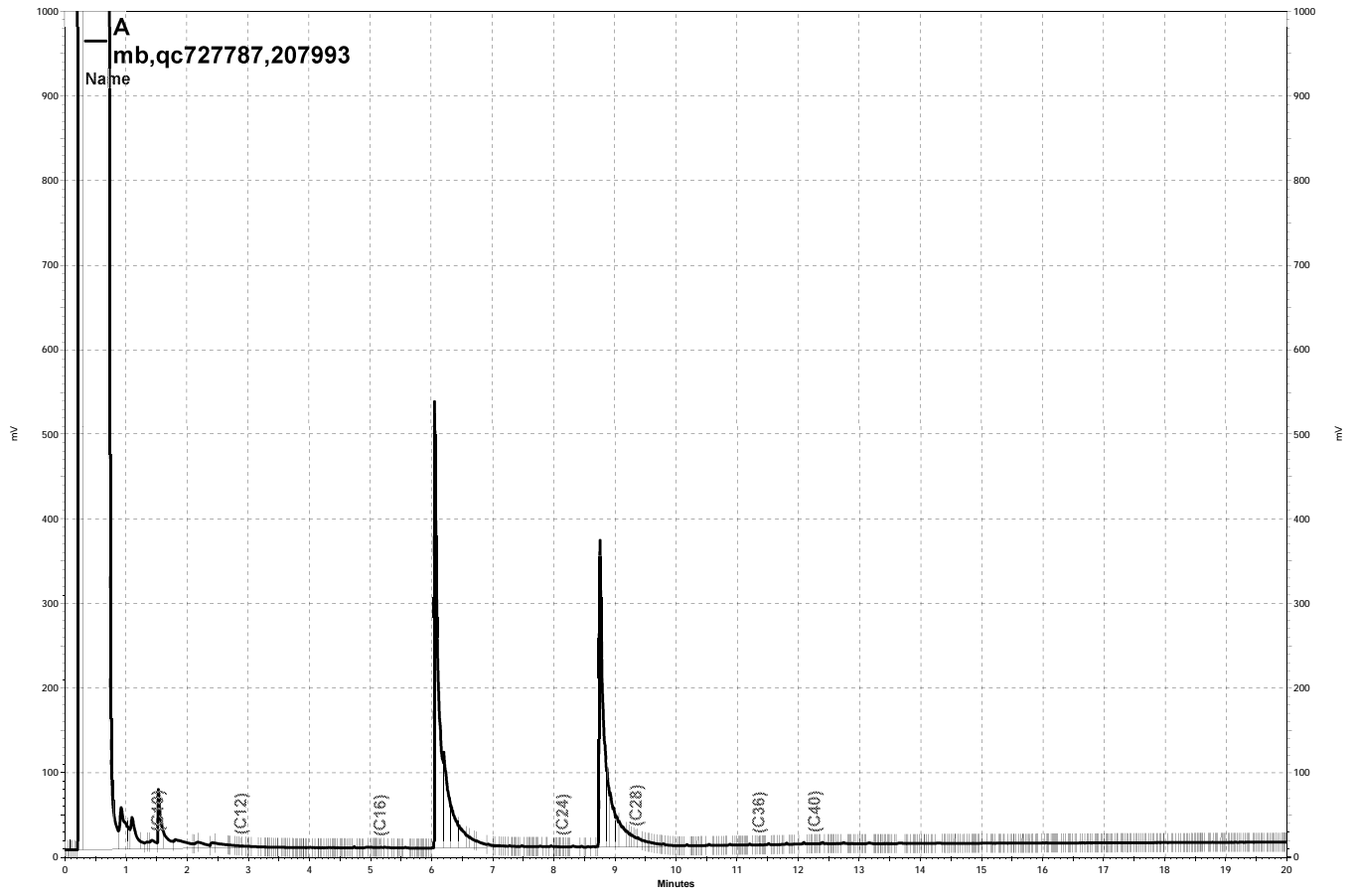
— \\lms\gdrive\ezchrom\Projects\GC27\Data\049a025.dat, Front Signal



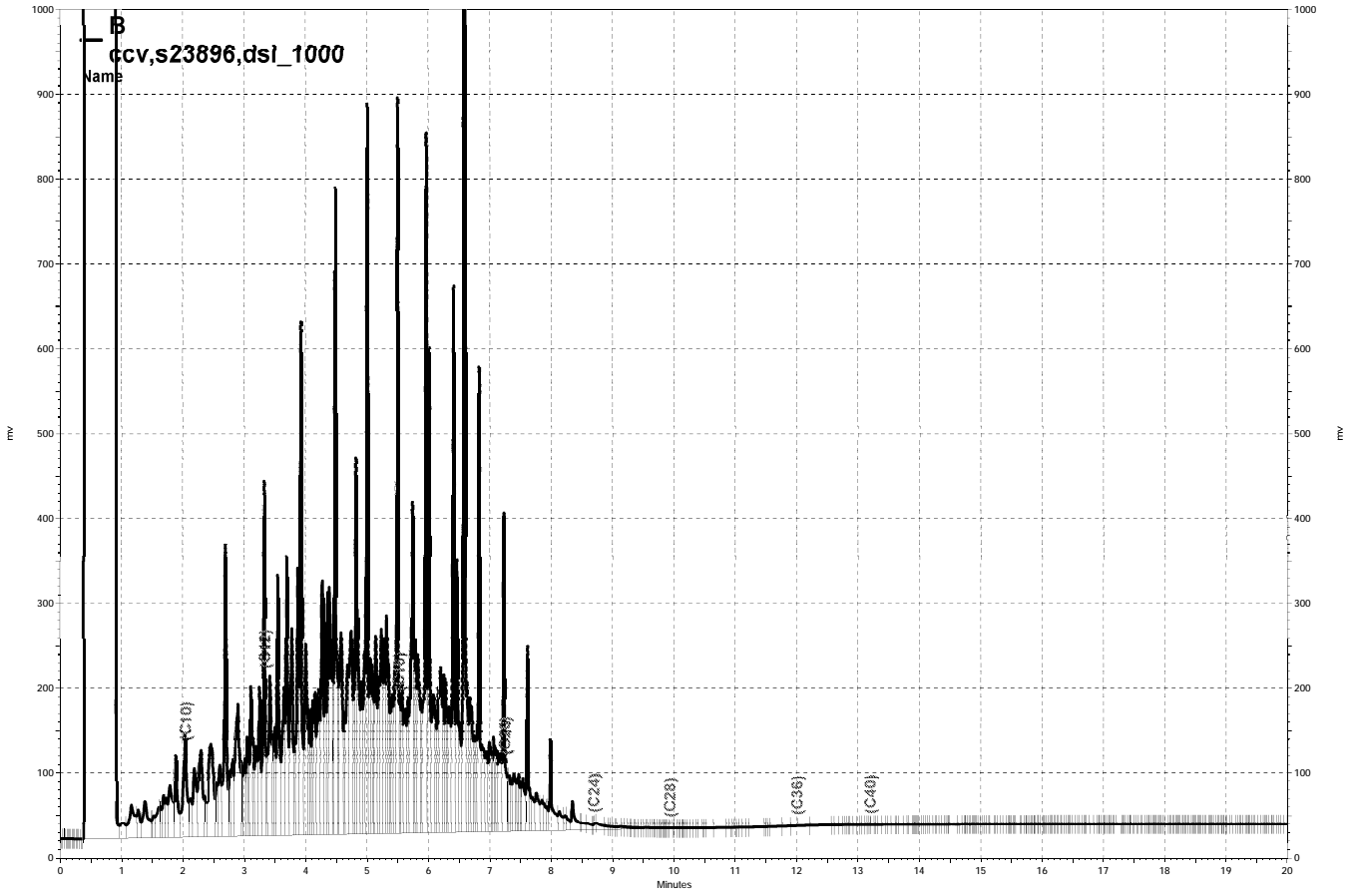
— \\lms\gdrive\ezchrom\Projects\GC27\Data\049a026.dat, Front Signal



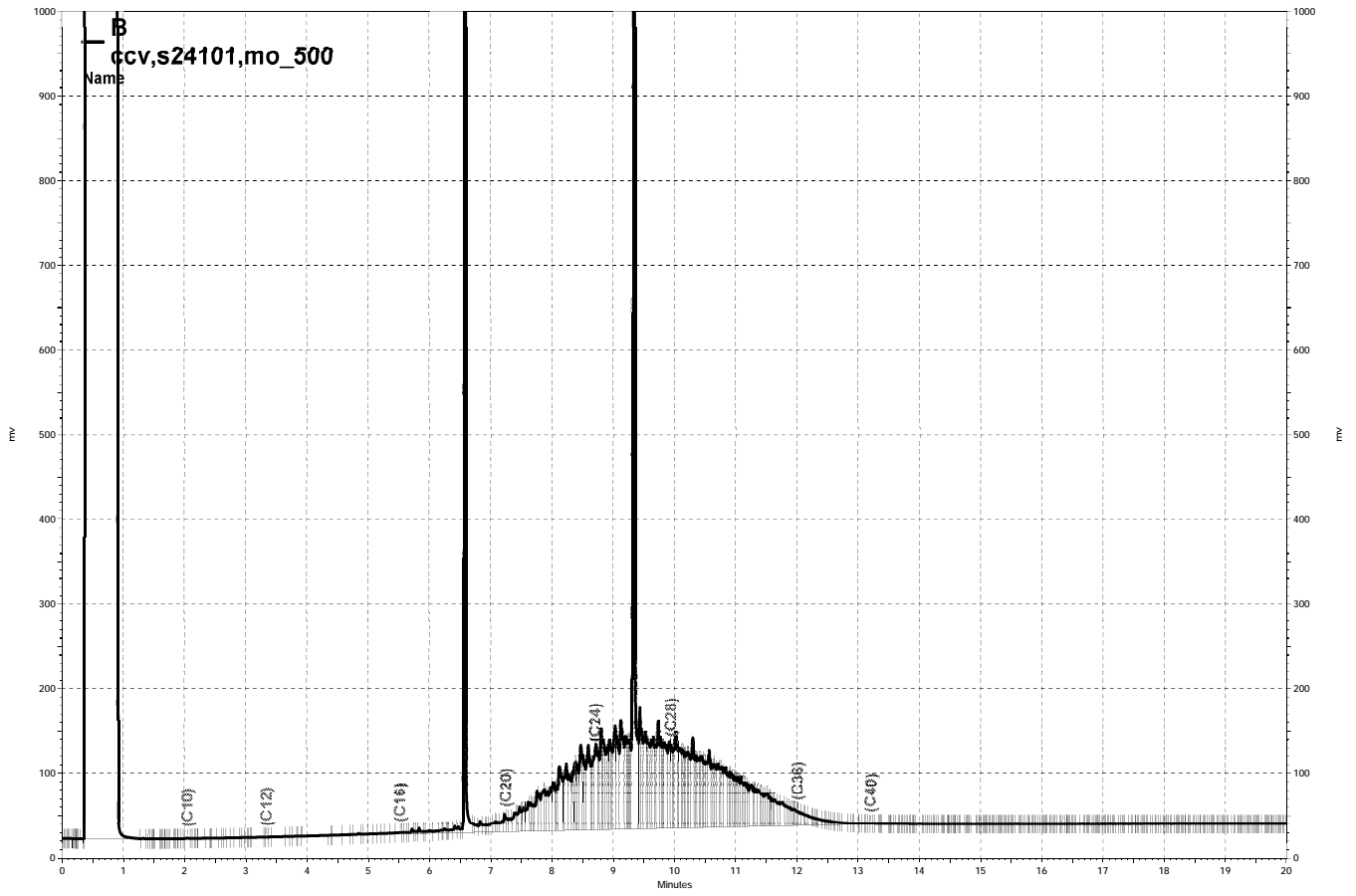
— \\Lims\gdrive\ezchrom\Projects\GC17A\Data\044a009, A



— \\Lims\gdrive\ezchrom\Projects\GC17A\Data\044a018, A



— \\Lims\gdrive\ezchrom\Projects\GC15B\Data\044b004, B



— \\Lims\gdrive\ezchrom\Projects\GC15B\Data\044b003, B

California Title 22 Metals

Lab #:	253056	Project#:	STANDARD
Client:	Suisun Bay Reserve Fleet	Location:	Stormwater Sampling
Field ID:	METEOR	Diln Fac:	1.000
Lab ID:	253056-001	Sampled:	02/06/14
Matrix:	Water	Received:	02/06/14
Units:	ug/L		

Analyte	Result	RL	Batch#	Prepared	Analyzed	Prep	Analysis
Antimony	ND	10	207930	02/11/14	02/12/14	EPA 3010A	EPA 6010B
Arsenic	ND	5.0	207930	02/11/14	02/12/14	EPA 3010A	EPA 6010B
Barium	500	5.0	207930	02/11/14	02/12/14	EPA 3010A	EPA 6010B
Beryllium	ND	2.0	207930	02/11/14	02/12/14	EPA 3010A	EPA 6010B
Cadmium	ND	5.0	207930	02/11/14	02/12/14	EPA 3010A	EPA 6010B
Chromium	ND	5.0	207930	02/11/14	02/12/14	EPA 3010A	EPA 6010B
Cobalt	ND	5.0	207930	02/11/14	02/12/14	EPA 3010A	EPA 6010B
Copper	110	5.0	207930	02/11/14	02/12/14	EPA 3010A	EPA 6010B
Lead	ND	5.0	207930	02/11/14	02/12/14	EPA 3010A	EPA 6010B
Mercury	ND	0.20	208217	02/21/14	02/21/14	METHOD	EPA 7470A
Molybdenum	ND	5.0	207930	02/11/14	02/12/14	EPA 3010A	EPA 6010B
Nickel	ND	5.0	207930	02/11/14	02/12/14	EPA 3010A	EPA 6010B
Selenium	ND	10	207930	02/11/14	02/12/14	EPA 3010A	EPA 6010B
Silver	ND	5.0	207930	02/11/14	02/12/14	EPA 3010A	EPA 6010B
Thallium	ND	10	207930	02/11/14	02/12/14	EPA 3010A	EPA 6010B
Vanadium	ND	5.0	207930	02/11/14	02/12/14	EPA 3010A	EPA 6010B
Zinc	1,300	20	207930	02/11/14	02/12/14	EPA 3010A	EPA 6010B

ND= Not Detected
 RL= Reporting Limit

California Title 22 Metals

Lab #:	253056	Project#:	STANDARD
Client:	Suisun Bay Reserve Fleet	Location:	Stormwater Sampling
Field ID:	NORTHERN LIGHT	Diln Fac:	1.000
Lab ID:	253056-002	Sampled:	02/06/14
Matrix:	Water	Received:	02/06/14
Units:	ug/L		

Analyte	Result	RL	Batch#	Prepared	Analyzed	Prep	Analysis
Antimony	ND	10	207930	02/11/14	02/12/14	EPA 3010A	EPA 6010B
Arsenic	ND	5.0	207930	02/11/14	02/12/14	EPA 3010A	EPA 6010B
Barium	240	5.0	207930	02/11/14	02/12/14	EPA 3010A	EPA 6010B
Beryllium	ND	2.0	207930	02/11/14	02/12/14	EPA 3010A	EPA 6010B
Cadmium	ND	5.0	207930	02/11/14	02/12/14	EPA 3010A	EPA 6010B
Chromium	ND	5.0	207930	02/11/14	02/12/14	EPA 3010A	EPA 6010B
Cobalt	ND	5.0	207930	02/11/14	02/12/14	EPA 3010A	EPA 6010B
Copper	240	5.0	207930	02/11/14	02/12/14	EPA 3010A	EPA 6010B
Lead	16	5.0	207930	02/11/14	02/12/14	EPA 3010A	EPA 6010B
Mercury	ND	0.20	208217	02/21/14	02/21/14	METHOD	EPA 7470A
Molybdenum	ND	5.0	207930	02/11/14	02/12/14	EPA 3010A	EPA 6010B
Nickel	ND	5.0	207930	02/11/14	02/12/14	EPA 3010A	EPA 6010B
Selenium	ND	10	207930	02/11/14	02/12/14	EPA 3010A	EPA 6010B
Silver	ND	5.0	207930	02/11/14	02/12/14	EPA 3010A	EPA 6010B
Thallium	ND	10	207930	02/11/14	02/12/14	EPA 3010A	EPA 6010B
Vanadium	ND	5.0	207930	02/11/14	02/12/14	EPA 3010A	EPA 6010B
Zinc	550	20	207930	02/11/14	02/12/14	EPA 3010A	EPA 6010B

ND= Not Detected
 RL= Reporting Limit

California Title 22 Metals

Lab #:	253056	Project#:	STANDARD
Client:	Suisun Bay Reserve Fleet	Location:	Stormwater Sampling
Field ID:	COMET	Diln Fac:	1.000
Lab ID:	253056-003	Sampled:	02/06/14
Matrix:	Water	Received:	02/06/14
Units:	ug/L		

Analyte	Result	RL	Batch#	Prepared	Analyzed	Prep	Analysis
Antimony	ND	10	207930	02/11/14	02/12/14	EPA 3010A	EPA 6010B
Arsenic	ND	5.0	207930	02/11/14	02/12/14	EPA 3010A	EPA 6010B
Barium	170	5.0	207930	02/11/14	02/12/14	EPA 3010A	EPA 6010B
Beryllium	ND	2.0	207930	02/11/14	02/12/14	EPA 3010A	EPA 6010B
Cadmium	ND	5.0	207930	02/11/14	02/12/14	EPA 3010A	EPA 6010B
Chromium	ND	5.0	207930	02/11/14	02/12/14	EPA 3010A	EPA 6010B
Cobalt	ND	5.0	207930	02/11/14	02/12/14	EPA 3010A	EPA 6010B
Copper	27	5.0	207930	02/11/14	02/12/14	EPA 3010A	EPA 6010B
Lead	ND	5.0	207930	02/11/14	02/12/14	EPA 3010A	EPA 6010B
Mercury	ND	0.20	208217	02/21/14	02/21/14	METHOD	EPA 7470A
Molybdenum	ND	5.0	207930	02/11/14	02/12/14	EPA 3010A	EPA 6010B
Nickel	ND	5.0	207930	02/11/14	02/12/14	EPA 3010A	EPA 6010B
Selenium	ND	10	207930	02/11/14	02/12/14	EPA 3010A	EPA 6010B
Silver	ND	5.0	207930	02/11/14	02/12/14	EPA 3010A	EPA 6010B
Thallium	ND	10	207930	02/11/14	02/12/14	EPA 3010A	EPA 6010B
Vanadium	ND	5.0	207930	02/11/14	02/12/14	EPA 3010A	EPA 6010B
Zinc	1,500	20	207930	02/11/14	02/12/14	EPA 3010A	EPA 6010B

ND= Not Detected
 RL= Reporting Limit

California Title 22 Metals

Lab #:	253056	Project#:	STANDARD
Client:	Suisun Bay Reserve Fleet	Location:	Stormwater Sampling
Field ID:	CAPE BRETON	Diln Fac:	1.000
Lab ID:	253056-004	Sampled:	02/06/14
Matrix:	Water	Received:	02/06/14
Units:	ug/L		

Analyte	Result	RL	Batch#	Prepared	Analyzed	Prep	Analysis
Antimony	ND	10	207930	02/11/14	02/12/14	EPA 3010A	EPA 6010B
Arsenic	ND	5.0	207930	02/11/14	02/12/14	EPA 3010A	EPA 6010B
Barium	160	5.0	207930	02/11/14	02/12/14	EPA 3010A	EPA 6010B
Beryllium	ND	2.0	207930	02/11/14	02/12/14	EPA 3010A	EPA 6010B
Cadmium	ND	5.0	207930	02/11/14	02/12/14	EPA 3010A	EPA 6010B
Chromium	ND	5.0	207930	02/11/14	02/12/14	EPA 3010A	EPA 6010B
Cobalt	ND	5.0	207930	02/11/14	02/12/14	EPA 3010A	EPA 6010B
Copper	27	5.0	207930	02/11/14	02/12/14	EPA 3010A	EPA 6010B
Lead	9.9	5.0	207930	02/11/14	02/12/14	EPA 3010A	EPA 6010B
Mercury	ND	0.20	208217	02/21/14	02/21/14	METHOD	EPA 7470A
Molybdenum	ND	5.0	207930	02/11/14	02/12/14	EPA 3010A	EPA 6010B
Nickel	ND	5.0	207930	02/11/14	02/12/14	EPA 3010A	EPA 6010B
Selenium	ND	10	207930	02/11/14	02/12/14	EPA 3010A	EPA 6010B
Silver	ND	5.0	207930	02/11/14	02/12/14	EPA 3010A	EPA 6010B
Thallium	ND	10	207930	02/11/14	02/12/14	EPA 3010A	EPA 6010B
Vanadium	ND	5.0	207930	02/11/14	02/12/14	EPA 3010A	EPA 6010B
Zinc	1,700	20	207930	02/11/14	02/12/14	EPA 3010A	EPA 6010B

ND= Not Detected
 RL= Reporting Limit

California Title 22 Metals

Lab #:	253056	Project#:	STANDARD
Client:	Suisun Bay Reserve Fleet	Location:	Stormwater Sampling
Field ID:	CAPE BLANCO	Diln Fac:	1.000
Lab ID:	253056-005	Sampled:	02/06/14
Matrix:	Water	Received:	02/06/14
Units:	ug/L		

Analyte	Result	RL	Batch#	Prepared	Analyzed	Prep	Analysis
Antimony	ND	10	207930	02/11/14	02/12/14	EPA 3010A	EPA 6010B
Arsenic	ND	5.0	207930	02/11/14	02/12/14	EPA 3010A	EPA 6010B
Barium	62	5.0	207930	02/11/14	02/12/14	EPA 3010A	EPA 6010B
Beryllium	ND	2.0	207930	02/11/14	02/12/14	EPA 3010A	EPA 6010B
Cadmium	ND	5.0	207930	02/11/14	02/12/14	EPA 3010A	EPA 6010B
Chromium	ND	5.0	207930	02/11/14	02/12/14	EPA 3010A	EPA 6010B
Cobalt	ND	5.0	207930	02/11/14	02/12/14	EPA 3010A	EPA 6010B
Copper	28	5.0	207930	02/11/14	02/12/14	EPA 3010A	EPA 6010B
Lead	ND	5.0	207930	02/11/14	02/12/14	EPA 3010A	EPA 6010B
Mercury	ND	0.20	208217	02/21/14	02/21/14	METHOD	EPA 7470A
Molybdenum	ND	5.0	207930	02/11/14	02/12/14	EPA 3010A	EPA 6010B
Nickel	ND	5.0	207930	02/11/14	02/12/14	EPA 3010A	EPA 6010B
Selenium	ND	10	207930	02/11/14	02/12/14	EPA 3010A	EPA 6010B
Silver	ND	5.0	207930	02/11/14	02/12/14	EPA 3010A	EPA 6010B
Thallium	ND	10	207930	02/11/14	02/12/14	EPA 3010A	EPA 6010B
Vanadium	ND	5.0	207930	02/11/14	02/12/14	EPA 3010A	EPA 6010B
Zinc	1,000	20	207930	02/11/14	02/12/14	EPA 3010A	EPA 6010B

ND= Not Detected
 RL= Reporting Limit

California Title 22 Metals

Lab #:	253056	Project#:	STANDARD
Client:	Suisun Bay Reserve Fleet	Location:	Stormwater Sampling
Field ID:	WYMAN	Diln Fac:	1.000
Lab ID:	253056-006	Sampled:	02/06/14
Matrix:	Water	Received:	02/06/14
Units:	ug/L		

Analyte	Result	RL	Batch#	Prepared	Analyzed	Prep	Analysis
Antimony	ND	10	207930	02/11/14	02/12/14	EPA 3010A	EPA 6010B
Arsenic	ND	5.0	207930	02/11/14	02/12/14	EPA 3010A	EPA 6010B
Barium	130	5.0	207930	02/11/14	02/12/14	EPA 3010A	EPA 6010B
Beryllium	ND	2.0	207930	02/11/14	02/12/14	EPA 3010A	EPA 6010B
Cadmium	ND	5.0	207930	02/11/14	02/12/14	EPA 3010A	EPA 6010B
Chromium	ND	5.0	207930	02/11/14	02/12/14	EPA 3010A	EPA 6010B
Cobalt	ND	5.0	207930	02/11/14	02/12/14	EPA 3010A	EPA 6010B
Copper	27	5.0	207930	02/11/14	02/12/14	EPA 3010A	EPA 6010B
Lead	ND	5.0	207930	02/11/14	02/12/14	EPA 3010A	EPA 6010B
Mercury	ND	0.20	208217	02/21/14	02/21/14	METHOD	EPA 7470A
Molybdenum	ND	5.0	207930	02/11/14	02/12/14	EPA 3010A	EPA 6010B
Nickel	13	5.0	207930	02/11/14	02/12/14	EPA 3010A	EPA 6010B
Selenium	ND	10	207930	02/11/14	02/12/14	EPA 3010A	EPA 6010B
Silver	ND	5.0	207930	02/11/14	02/12/14	EPA 3010A	EPA 6010B
Thallium	ND	10	207930	02/11/14	02/12/14	EPA 3010A	EPA 6010B
Vanadium	ND	5.0	207930	02/11/14	02/12/14	EPA 3010A	EPA 6010B
Zinc	770	20	207930	02/11/14	02/12/14	EPA 3010A	EPA 6010B

ND= Not Detected
 RL= Reporting Limit

California Title 22 Metals

Lab #:	253056	Project#:	STANDARD
Client:	Suisun Bay Reserve Fleet	Location:	Stormwater Sampling
Field ID:	CAPE BORDA	Diln Fac:	1.000
Lab ID:	253056-007	Sampled:	02/06/14
Matrix:	Water	Received:	02/06/14
Units:	ug/L		

Analyte	Result	RL	Batch#	Prepared	Analyzed	Prep	Analysis
Antimony	ND	10	207930	02/11/14	02/12/14	EPA 3010A	EPA 6010B
Arsenic	ND	5.0	207930	02/11/14	02/12/14	EPA 3010A	EPA 6010B
Barium	390	5.0	207930	02/11/14	02/12/14	EPA 3010A	EPA 6010B
Beryllium	ND	2.0	207930	02/11/14	02/12/14	EPA 3010A	EPA 6010B
Cadmium	ND	5.0	207930	02/11/14	02/12/14	EPA 3010A	EPA 6010B
Chromium	ND	5.0	207930	02/11/14	02/12/14	EPA 3010A	EPA 6010B
Cobalt	ND	5.0	207930	02/11/14	02/12/14	EPA 3010A	EPA 6010B
Copper	24	5.0	207930	02/11/14	02/12/14	EPA 3010A	EPA 6010B
Lead	ND	5.0	207930	02/11/14	02/12/14	EPA 3010A	EPA 6010B
Mercury	ND	0.20	208217	02/21/14	02/21/14	METHOD	EPA 7470A
Molybdenum	ND	5.0	207930	02/11/14	02/12/14	EPA 3010A	EPA 6010B
Nickel	ND	5.0	207930	02/11/14	02/12/14	EPA 3010A	EPA 6010B
Selenium	ND	10	207930	02/11/14	02/12/14	EPA 3010A	EPA 6010B
Silver	ND	5.0	207930	02/11/14	02/12/14	EPA 3010A	EPA 6010B
Thallium	ND	10	207930	02/11/14	02/12/14	EPA 3010A	EPA 6010B
Vanadium	ND	5.0	207930	02/11/14	02/12/14	EPA 3010A	EPA 6010B
Zinc	1,400	20	207930	02/11/14	02/12/14	EPA 3010A	EPA 6010B

ND= Not Detected
 RL= Reporting Limit

California Title 22 Metals

Lab #:	253056	Project#:	STANDARD
Client:	Suisun Bay Reserve Fleet	Location:	Stormwater Sampling
Field ID:	PARKING LOT	Diln Fac:	1.000
Lab ID:	253056-008	Sampled:	02/06/14
Matrix:	Water	Received:	02/06/14
Units:	ug/L		

Analyte	Result	RL	Batch#	Prepared	Analyzed	Prep	Analysis
Antimony	ND	10	207930	02/11/14	02/12/14	EPA 3010A	EPA 6010B
Arsenic	12	5.0	207930	02/11/14	02/12/14	EPA 3010A	EPA 6010B
Barium	20	5.0	207930	02/11/14	02/12/14	EPA 3010A	EPA 6010B
Beryllium	ND	2.0	207930	02/11/14	02/12/14	EPA 3010A	EPA 6010B
Cadmium	ND	5.0	207930	02/11/14	02/12/14	EPA 3010A	EPA 6010B
Chromium	ND	5.0	207930	02/11/14	02/12/14	EPA 3010A	EPA 6010B
Cobalt	ND	5.0	207930	02/11/14	02/12/14	EPA 3010A	EPA 6010B
Copper	16	5.0	207930	02/11/14	02/12/14	EPA 3010A	EPA 6010B
Lead	ND	5.0	207930	02/11/14	02/12/14	EPA 3010A	EPA 6010B
Mercury	ND	0.20	208217	02/21/14	02/21/14	METHOD	EPA 7470A
Molybdenum	ND	5.0	207930	02/11/14	02/12/14	EPA 3010A	EPA 6010B
Nickel	ND	5.0	207930	02/11/14	02/12/14	EPA 3010A	EPA 6010B
Selenium	ND	10	207930	02/11/14	02/12/14	EPA 3010A	EPA 6010B
Silver	ND	5.0	207930	02/11/14	02/12/14	EPA 3010A	EPA 6010B
Thallium	ND	10	207930	02/11/14	02/12/14	EPA 3010A	EPA 6010B
Vanadium	ND	5.0	207930	02/11/14	02/12/14	EPA 3010A	EPA 6010B
Zinc	74	20	207930	02/11/14	02/12/14	EPA 3010A	EPA 6010B

ND= Not Detected
 RL= Reporting Limit

Batch QC Report

California Title 22 Metals			
Lab #:	253056	Location:	Stormwater Sampling
Client:	Suisun Bay Reserve Fleet	Prep:	EPA 3010A
Project#:	STANDARD	Analysis:	EPA 6010B
Type:	BLANK	Diln Fac:	1.000
Lab ID:	QC727517	Batch#:	207930
Matrix:	Water	Prepared:	02/11/14
Units:	ug/L	Analyzed:	02/12/14

Analyte	Result	RL
Antimony	ND	10
Arsenic	ND	5.0
Barium	ND	5.0
Beryllium	ND	2.0
Cadmium	ND	5.0
Chromium	ND	5.0
Cobalt	ND	5.0
Copper	ND	5.0
Lead	ND	5.0
Molybdenum	ND	5.0
Nickel	ND	5.0
Selenium	ND	10
Silver	ND	5.0
Thallium	ND	10
Vanadium	ND	5.0
Zinc	ND	20

ND= Not Detected

RL= Reporting Limit

Batch QC Report

California Title 22 Metals			
Lab #:	253056	Location:	Stormwater Sampling
Client:	Suisun Bay Reserve Fleet	Prep:	EPA 3010A
Project#:	STANDARD	Analysis:	EPA 6010B
Matrix:	Water	Batch#:	207930
Units:	ug/L	Prepared:	02/11/14
Diln Fac:	1.000	Analyzed:	02/12/14

Type: BS Lab ID: QC727518

Analyte	Spiked	Result	%REC	Limits
Antimony	500.0	484.5	97	78-120
Arsenic	100.0	104.7	105	80-120
Barium	2,000	1,934	97	80-120
Beryllium	50.00	50.30	101	80-120
Cadmium	50.00	53.84	108	80-120
Chromium	200.0	201.0	100	80-120
Cobalt	500.0	501.0	100	80-120
Copper	250.0	258.9	104	79-120
Lead	100.0	92.80	93	80-120
Molybdenum	400.0	391.6	98	80-120
Nickel	500.0	510.8	102	80-120
Selenium	100.0	100.3	100	80-120
Silver	50.00	51.01	102	80-120
Thallium	100.0	103.7	104	80-120
Vanadium	500.0	514.2	103	80-120
Zinc	500.0	518.7	104	80-120

Type: BSD Lab ID: QC727519

Analyte	Spiked	Result	%REC	Limits	RPD	Lim
Antimony	500.0	513.2	103	78-120	6	20
Arsenic	100.0	110.6	111	80-120	5	20
Barium	2,000	2,048	102	80-120	6	20
Beryllium	50.00	53.09	106	80-120	5	20
Cadmium	50.00	57.06	114	80-120	6	20
Chromium	200.0	213.6	107	80-120	6	20
Cobalt	500.0	532.7	107	80-120	6	20
Copper	250.0	269.9	108	79-120	4	20
Lead	100.0	98.59	99	80-120	6	20
Molybdenum	400.0	414.9	104	80-120	6	20
Nickel	500.0	544.3	109	80-120	6	20
Selenium	100.0	103.9	104	80-120	4	20
Silver	50.00	54.00	108	80-120	6	20
Thallium	100.0	112.2	112	80-120	8	20
Vanadium	500.0	543.5	109	80-120	6	20
Zinc	500.0	552.0	110	80-120	6	20

RPD= Relative Percent Difference

Batch QC Report

California Title 22 Metals			
Lab #:	253056	Location:	Stormwater Sampling
Client:	Suisun Bay Reserve Fleet	Prep:	EPA 3010A
Project#:	STANDARD	Analysis:	EPA 6010B
Field ID:	METEOR	Batch#:	207930
MSS Lab ID:	253056-001	Sampled:	02/06/14
Matrix:	Water	Received:	02/06/14
Units:	ug/L	Prepared:	02/11/14
Diln Fac:	1.000	Analyzed:	02/12/14

Type: MS Lab ID: QC727520

Analyte	MSS Result	Spiked	Result	%REC	Limits
Antimony	<2.572	500.0	513.3	103	76-120
Arsenic	<0.7418	100.0	110.7	111	79-126
Barium	499.7	2,000	2,447	97	74-120
Beryllium	<0.1508	50.00	52.63	105	80-122
Cadmium	1.621	50.00	57.87	112	76-122
Chromium	<0.6859	200.0	211.6	106	76-120
Cobalt	0.4257	500.0	525.7	105	74-120
Copper	109.7	250.0	370.0	104	74-122
Lead	2.137	100.0	99.23	97	71-120
Molybdenum	0.7306	400.0	413.6	103	78-120
Nickel	1.963	500.0	535.5	107	73-120
Selenium	<3.205	100.0	106.8	107	71-127
Silver	<0.4706	50.00	53.07	106	58-128
Thallium	<2.337	100.0	110.4	110	71-120
Vanadium	<0.8239	500.0	540.1	108	80-120
Zinc	1,318	500.0	1,658	68 *	74-123

Type: MSD Lab ID: QC727521

Analyte	Spiked	Result	%REC	Limits	RPD	Lim
Antimony	500.0	518.6	104	76-120	1	20
Arsenic	100.0	112.9	113	79-126	2	20
Barium	2,000	2,431	97	74-120	1	25
Beryllium	50.00	52.24	104	80-122	1	20
Cadmium	50.00	58.34	113	76-122	1	20
Chromium	200.0	209.9	105	76-120	1	20
Cobalt	500.0	520.9	104	74-120	1	20
Copper	250.0	371.6	105	74-122	0	21
Lead	100.0	100.5	98	71-120	1	20
Molybdenum	400.0	417.0	104	78-120	1	20
Nickel	500.0	533.7	106	73-120	0	20
Selenium	100.0	108.3	108	71-127	1	35
Silver	50.00	52.78	106	58-128	1	22
Thallium	100.0	110.6	111	71-120	0	20
Vanadium	500.0	535.4	107	80-120	1	20
Zinc	500.0	1,660	68 *	74-123	0	20

*= Value outside of QC limits; see narrative

RPD= Relative Percent Difference

Batch QC Report

California Title 22 Metals			
Lab #:	253056	Location:	Stormwater Sampling
Client:	Suisun Bay Reserve Fleet	Prep:	METHOD
Project#:	STANDARD	Analysis:	EPA 7470A
Analyte:	Mercury	Diln Fac:	1.000
Type:	BLANK	Batch#:	208217
Lab ID:	QC728631	Prepared:	02/21/14
Matrix:	Water	Analyzed:	02/21/14
Units:	ug/L		

Result	RL
ND	0.20

ND= Not Detected
 RL= Reporting Limit

Batch QC Report

California Title 22 Metals			
Lab #:	253056	Location:	Stormwater Sampling
Client:	Suisun Bay Reserve Fleet	Prep:	METHOD
Project#:	STANDARD	Analysis:	EPA 7470A
Analyte:	Mercury	Batch#:	208217
Matrix:	Water	Prepared:	02/21/14
Units:	ug/L	Analyzed:	02/21/14
Diln Fac:	1.000		

Type	Lab ID	Spiked	Result	%REC	Limits	RPD	Lim
BS	QC728632	2.500	2.519	101	80-120		
BSD	QC728633	2.500	2.422	97	80-120	4	20

Batch QC Report

California Title 22 Metals			
Lab #:	253056	Location:	Stormwater Sampling
Client:	Suisun Bay Reserve Fleet	Prep:	METHOD
Project#:	STANDARD	Analysis:	EPA 7470A
Analyte:	Mercury	Batch#:	208217
Field ID:	ZZZZZZZZZZ	Sampled:	02/14/14
MSS Lab ID:	253413-001	Received:	02/14/14
Matrix:	Water	Prepared:	02/21/14
Units:	ug/L	Analyzed:	02/21/14
Diln Fac:	1.000		

Type	Lab ID	MSS Result	Spiked	Result	%REC	Limits	RPD	Lim
MS	QC728634	0.08770	2.500	2.743	106	57-127		
MSD	QC728635		2.500	2.737	106	57-127	0	42

RPD= Relative Percent Difference

Total Oil & Grease (HEM)			
Lab #:	253056	Location:	Stormwater Sampling
Client:	Suisun Bay Reserve Fleet	Prep:	METHOD
Project#:	STANDARD	Analysis:	EPA 1664A
Analyte:	Oil & Grease (HEM)	Sampled:	02/06/14
Matrix:	Water	Received:	02/06/14
Units:	mg/L	Analyzed:	02/11/14
Batch#:	207944		

Field ID	Type	Lab ID	Result	RL	Diln Fac
METEOR	SAMPLE	253056-001	ND	5.00	1.000
NORTHERN LIGHT	SAMPLE	253056-002	ND	4.75	0.9500
COMET	SAMPLE	253056-003	ND	5.00	1.000
CAPE BRETON	SAMPLE	253056-004	ND	5.00	1.000
CAPE BLANCO	SAMPLE	253056-005	ND	4.85	0.9700
WYMAN	SAMPLE	253056-006	ND	5.00	1.000
CAPE BORDA	SAMPLE	253056-007	ND	4.75	0.9500
PARKING LOT	SAMPLE	253056-008	ND	5.05	1.010
	BLANK	QC727586	ND	5.00	1.000

ND= Not Detected
 RL= Reporting Limit

Batch QC Report

Total Oil & Grease (HEM)			
Lab #:	253056	Location:	Stormwater Sampling
Client:	Suisun Bay Reserve Fleet	Prep:	METHOD
Project#:	STANDARD	Analysis:	EPA 1664A
Analyte:	Oil & Grease (HEM)	Diln Fac:	1.000
Matrix:	Water	Batch#:	207944
Units:	mg/L	Analyzed:	02/11/14

Type	Lab ID	Spiked	Result	%REC	Limits	RPD	Lim
BS	QC727587	40.00	38.30	96	78-114		
BSD	QC727588	40.00	36.50	91	78-114	5	18

RPD= Relative Percent Difference

Conductivity			
Lab #:	253056	Location:	Stormwater Sampling
Client:	Suisun Bay Reserve Fleet	Prep:	METHOD
Project#:	STANDARD	Analysis:	SM2510B
Analyte:	Specific Conductance	Batch#:	207942
Matrix:	Water	Received:	02/06/14
Units:	umhos/cm	Analyzed:	02/11/14 17:21
Diln Fac:	1.000		

Field ID	Type	Lab ID	Result	RL	Sampled
METEOR	SAMPLE	253056-001	44	1.0	02/06/14 07:40
NORTHERN LIGHT	SAMPLE	253056-002	46	1.0	02/06/14 08:06
COMET	SAMPLE	253056-003	36	1.0	02/06/14 07:40
CAPE BRETON	SAMPLE	253056-004	58	1.0	02/06/14 07:58
CAPE BLANCO	SAMPLE	253056-005	43	1.0	02/06/14 08:10
WYMAN	SAMPLE	253056-006	59	1.0	02/06/14 08:10
CAPE BORDA	SAMPLE	253056-007	72	1.0	02/06/14 07:30
PARKING LOT	SAMPLE	253056-008	1,690	1.0	02/06/14 07:45
	BLANK	QC727578	ND	1.0	

ND= Not Detected
 RL= Reporting Limit

Batch QC Report

Conductivity			
Lab #:	253056	Location:	Stormwater Sampling
Client:	Suisun Bay Reserve Fleet	Prep:	METHOD
Project#:	STANDARD	Analysis:	SM2510B
Analyte:	Specific Conductance	Diln Fac:	1.000
Field ID:	ZZZZZZZZZZ	Batch#:	207942
MSS Lab ID:	253053-003	Sampled:	02/06/14 08:10
Matrix:	Water	Received:	02/06/14
Units:	umhos/cm	Analyzed:	02/11/14 17:21

Type	Lab ID	MSS Result	Spiked	Result	RL	%REC	Limits	RPD	Lim
LCS	QC727579		1,000	938.0		94	90-110		
SDUP	QC727580	2.130		2.100	1.000			1	20

RL= Reporting Limit

RPD= Relative Percent Difference

pH			
Lab #:	253056	Location:	Stormwater Sampling
Client:	Suisun Bay Reserve Fleet	Prep:	METHOD
Project#:	STANDARD	Analysis:	EPA 9040C
Analyte:	pH	Batch#:	207786
Matrix:	Water	Received:	02/06/14
Units:	SU	Analyzed:	02/06/14 17:10
Diln Fac:	1.000		

Field ID	Lab ID	Result	RL	Sampled
METEOR	253056-001	6.3	1.0	02/06/14 07:40
NORTHERN LIGHT	253056-002	6.0	1.0	02/06/14 08:06
COMET	253056-003	5.8	1.0	02/06/14 07:40
CAPE BRETON	253056-004	6.2	1.0	02/06/14 07:58
CAPE BLANCO	253056-005	6.4	1.0	02/06/14 08:10
WYMAN	253056-006	6.3	1.0	02/06/14 08:10
CAPE BORDA	253056-007	6.4	1.0	02/06/14 07:30
PARKING LOT	253056-008	7.1	1.0	02/06/14 07:45

RL= Reporting Limit

Batch QC Report

pH				
Lab #:	253056	Location:	Stormwater Sampling	
Client:	Suisun Bay Reserve Fleet	Prep:	METHOD	
Project#:	STANDARD	Analysis:	EPA 9040C	
Analyte:	pH	Units:	SU	
Field ID:	ZZZZZZZZZZ	Diln Fac:	1.000	
Type:	SDUP	Batch#:	207786	
MSS Lab ID:	253027-002	Sampled:	02/06/14 07:35	
Lab ID:	QC726922	Received:	02/06/14	
Matrix:	Water	Analyzed:	02/06/14 11:40	
MSS Result	Result	RL	RPD	Lim
6.760	6.760	1.000	0	20

RL= Reporting Limit

RPD= Relative Percent Difference

Total Suspended Solids (TSS)			
Lab #:	253056	Location:	Stormwater Sampling
Client:	Suisun Bay Reserve Fleet	Prep:	METHOD
Project#:	STANDARD	Analysis:	SM2540D
Analyte:	Total Suspended Solids	Sampled:	02/06/14
Matrix:	Water	Received:	02/06/14
Units:	mg/L	Prepared:	02/11/14
Diln Fac:	1.000	Analyzed:	02/12/14
Batch#:	207943		

Field ID	Type	Lab ID	Result	RL
METEOR	SAMPLE	253056-001	ND	5
NORTHERN LIGHT	SAMPLE	253056-002	41	5
COMET	SAMPLE	253056-003	ND	5
CAPE BRETON	SAMPLE	253056-004	13	5
CAPE BLANCO	SAMPLE	253056-005	ND	5
WYMAN	SAMPLE	253056-006	ND	5
CAPE BORDA	SAMPLE	253056-007	ND	5
PARKING LOT	SAMPLE	253056-008	ND	5
	BLANK	QC727581	ND	5

ND= Not Detected
 RL= Reporting Limit

Batch QC Report

Total Suspended Solids (TSS)			
Lab #:	253056	Location:	Stormwater Sampling
Client:	Suisun Bay Reserve Fleet	Prep:	METHOD
Project#:	STANDARD	Analysis:	SM2540D
Analyte:	Total Suspended Solids	Batch#:	207943
Field ID:	ZZZZZZZZZZ	Sampled:	02/06/14
MSS Lab ID:	253053-003	Received:	02/06/14
Matrix:	Water	Prepared:	02/11/14
Units:	mg/L	Analyzed:	02/12/14
Diln Fac:	1.000		

Type	Lab ID	MSS Result	Spiked	Result	%REC	Limits	RPD	Lim
BS	QC727582		50.00	46.00	92	80-120		
BSD	QC727583		50.00	47.00	94	80-120	2	5
MS	QC727584	<5.000	50.00	49.00	98	52-132		
MSD	QC727585		50.00	50.00	100	52-132	2	5

RPD= Relative Percent Difference