

South Central Region

The South Central region is home to the nation's 4th and 5th largest metropolitan areas by population and is also a major freight hub, with multiple Class I railroads transporting freight to and from the ports of Galveston and New Orleans and across the Mexican border.



Increased Top Speeds

between Oklahoma City and Fort Worth

Infrastructure improvements to 15 rail segments will allow passenger trains to travel at higher speeds on the Texas portion of the route, resulting in up to 17 minutes of travel time savings.



Safer Grade Crossings

and congestion mitigation in Texas

The same infrastructure improvements will not only speed rail traffic, but also reduce the risk of dangerous accidents at grade crossings used by trucks and automobiles.



Planning and Feasibility Studies

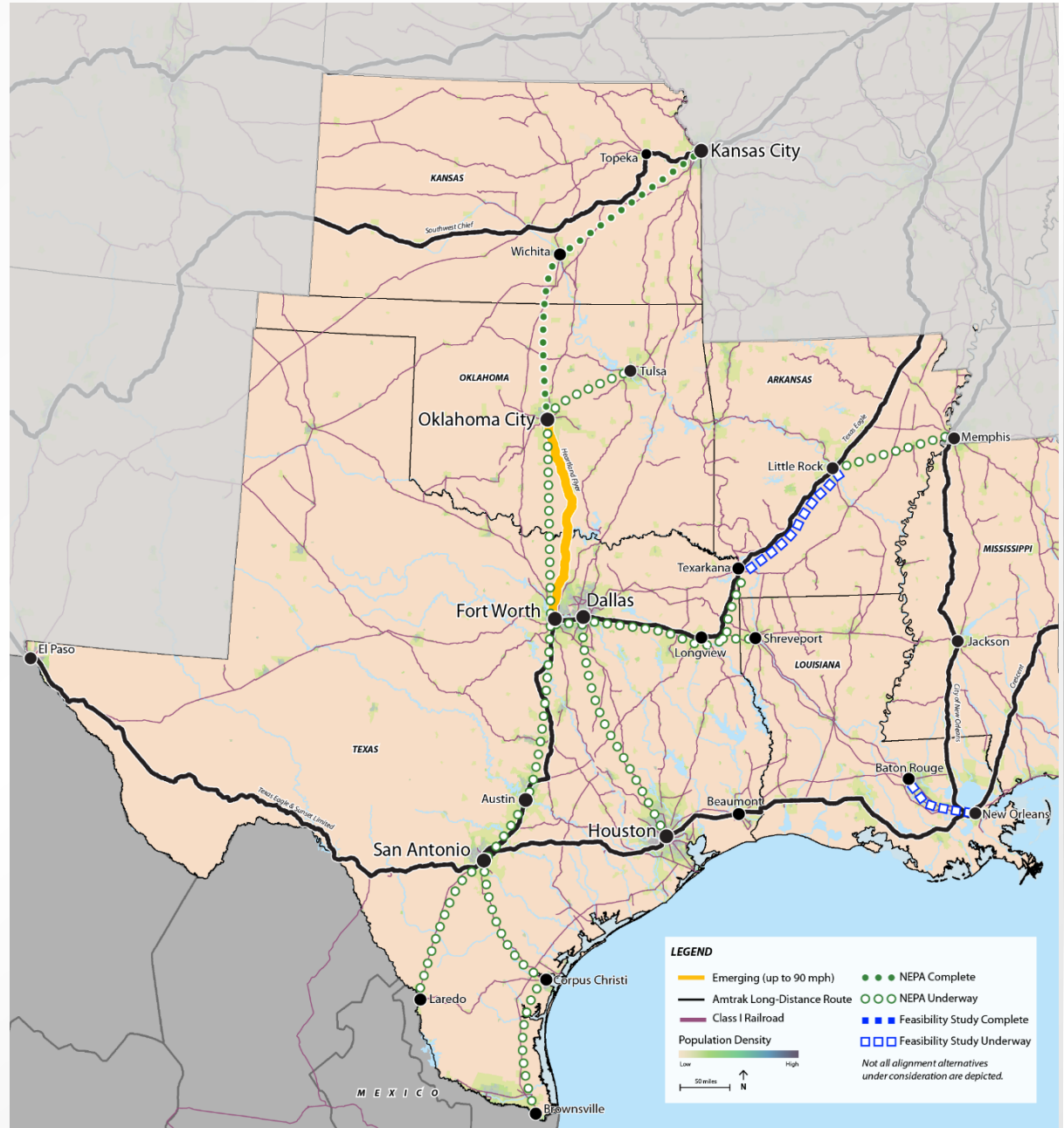
currently underway for several corridors

Several corridors are being considered for new or expanded passenger rail service, including a 150 mph route from Dallas to Houston that has strong private sector support.



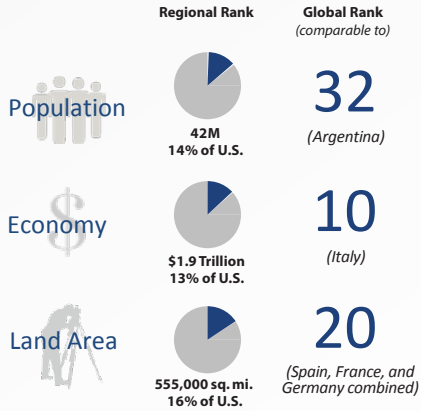
16% Ridership Increase

in the region since 2005

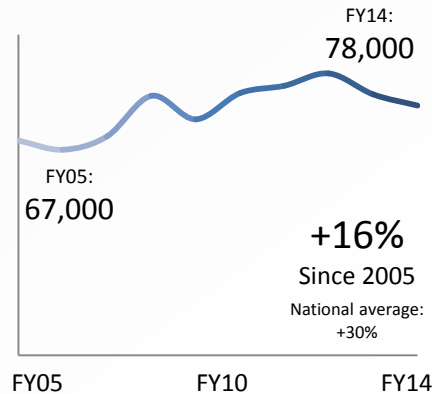


South Central Region

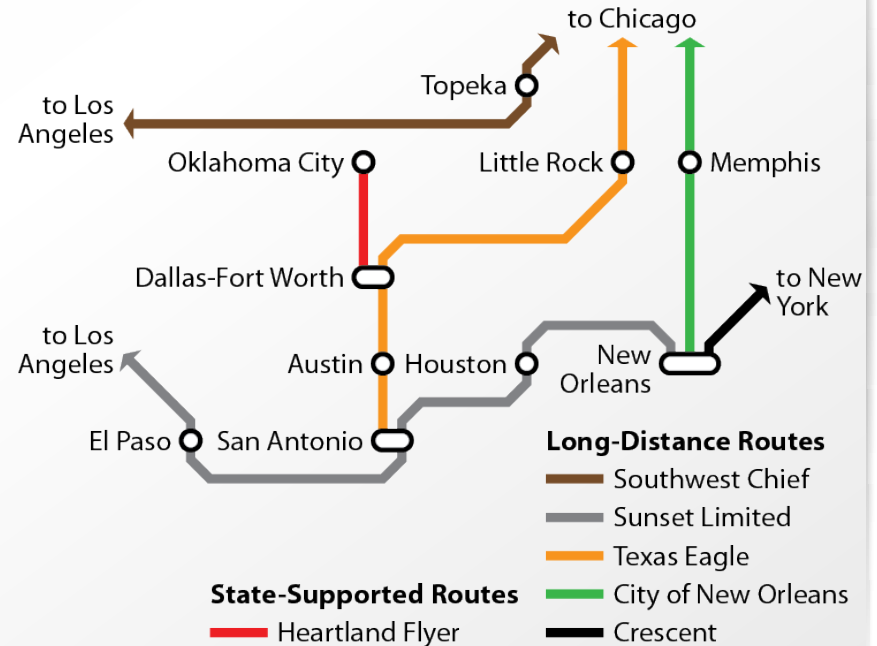
Region Characteristics



Ridership Growth



Route Diagram



Funding by Corridor and Source

Corridor	Length (miles)	Investments \$M 2009-2014		
		Federal	Non-Federal	Total
Dallas - Austin - San Antonio - Houston	Varies	\$49	\$67	\$117
Oklahoma City - Fort Worth	206	\$14	\$15	\$30
Tulsa - Oklahoma City	110	\$2	\$1	\$3
Kansas City - Oklahoma City	400	\$0	\$0	\$1
Multiple Corridors	Varies	\$6	\$-	\$6
Other Corridors / Freight Investments	n/a	\$54	\$16	\$70
State Rail Plans	n/a	\$0	\$0	\$1
TOTAL		\$126	\$101	\$227

Includes HSIPR and TIGER investments. Totals may not add exactly due to rounding.

SOURCES : Population: U.S. Census Bureau, 2010. Economy: U.S. Bureau of Economic Analysis, 2010. International Statistics: CIA World Factbook, 2012. Ridership: Amtrak, 2014. All Other Information: Federal Railroad Administration, 2015.