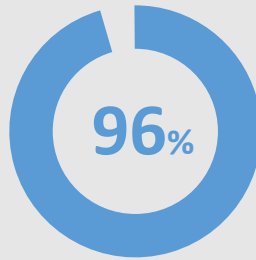




U.S. Department
of Transportation
**Federal Railroad
Administration**

Railroad Crossing Safety and Trespass Prevention

December 2015

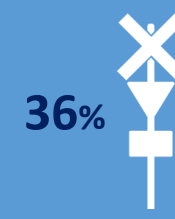
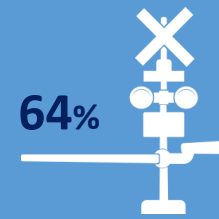


Combined, railroad crossing and trespasser deaths account for approximately 96 percent of all rail-related deaths.

About every 3 hours, a person or vehicle is hit by a train



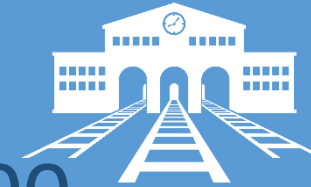
Crossings in the U.S.



Roughly two-thirds of public crossings are **active** (include gates, bells, and/or flashing lights) while the other one-third are **passive** (include signs and markings, but do not include active warning devices). Always expect a train on any track at anytime.

The U.S. Railroad System

750
Railroads



140,000
Miles of track

212,000
Railroad crossings

Safety Trends

Although rail incidents have been in decline...

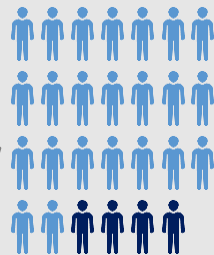
-24%

In the past 10 years fatalities at U.S. crossings have declined substantially.

-33%

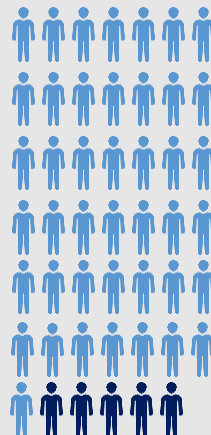
Similarly, over the same 10 year period, trespassing fatalities have also declined.

2014 saw Railroad Crossing fatalities increase...



In 2014 there were approximately 270 fatalities at railroad crossings, an increase of 40 from the previous year.

And a similar increase in trespasser fatalities.



In 2014 there were approximately 480 trespasser fatalities at railroad tracks, an increase of 50 from the previous year.

= 10 fatalities



67%

More than two-thirds of railroad crossing accidents occur in clear weather conditions

Trains cannot stop quickly! A train traveling at 55 MPH takes a mile or more to stop!



For more information on rail safety, visit our Statistics page under the Railroad Crossing Safety tab.