

Government/Pipeline R&D Forum - ICDA for Wet Gas Systems

**Garry Matocha, P. E.
Spectra Energy Transmission
gmmatocha@spectraenergy.com**

February 7 – 8, 2007

Outline

- Scope of the proposed NACE Standard (TG 305)
- Overview of the four-step procedure
- Indirect Assessment step
- Research Needs

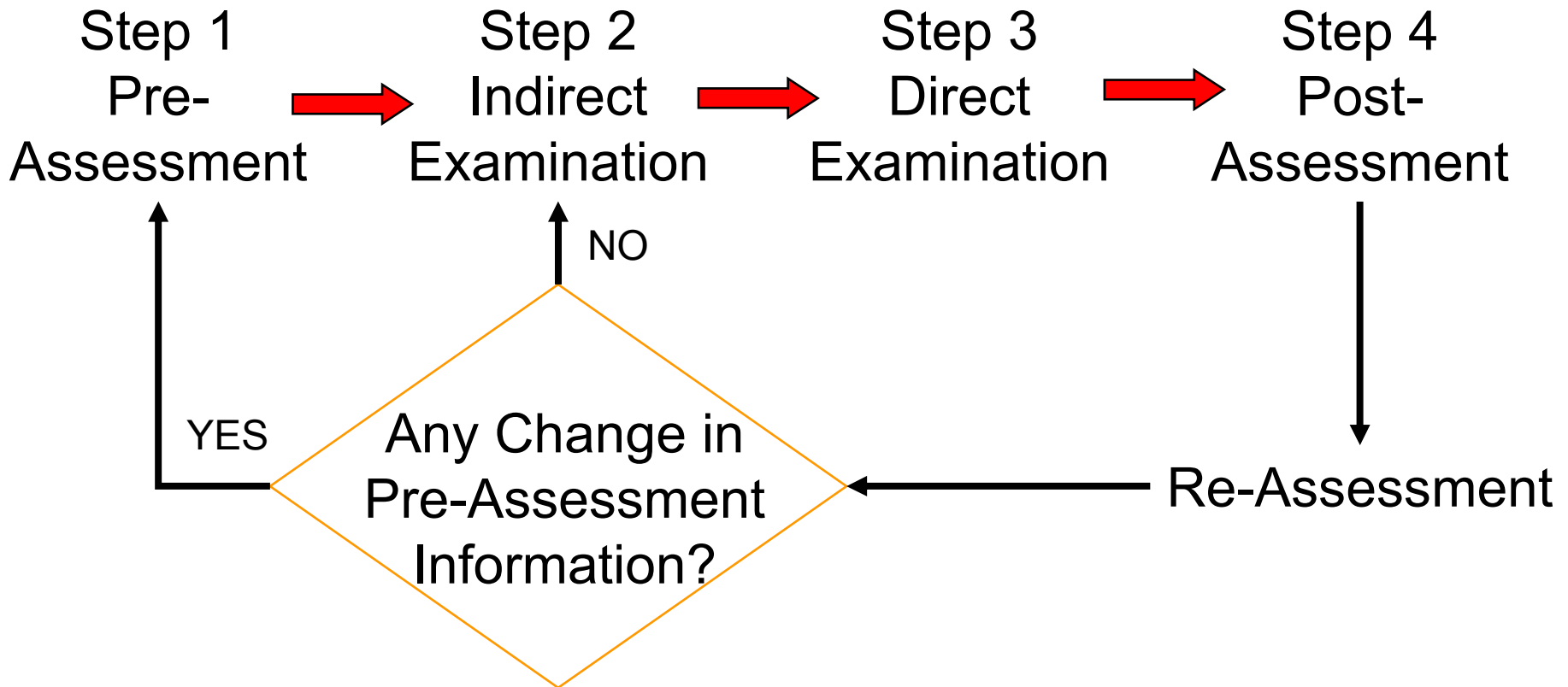
Scope of NACE Standard

- Pipelines
 - Water content in gas exceeds dew point; liquid/gas vol. ratio less than 10%

 - Include
 - Gathering, storage, distribution lines and drips in transmission lines
 - In such lines where ILI tools are not applicable

 - Not
 - down hole or wells; vessels or tanks

Four Step Process



Regions

- **Region** is a pipe segment defined based on:
 - point of input/output, flow directions, processes of significant change e.g. T and P
 - Important to determine corrosivity by gas composition and mitigation which change abruptly at inlet
 - Done in Preassessment

Indirect-Assessment

- Determine zones and segments inside zones
- Rank overall corrosivity of subzones
- Prioritize locations for excavation
 - [10% high, 30% medium, 60% low]
- Minimum of five digs
 - Two highest priority digs; two consecutive medium with minimal corrosion; one low dig for validation

Zones

Table 4.1: Possible Types of Zones for WG ICDA

Zone	Flow Regime
Zone 0	No liquid
Zone 1	Mist
Zone 2	Stratified
Zone 3	Slug
Zone 4	Annular

Subdividing-Zones

Influencing factors to determine and rank sub-zones

- **Mandatory Factor**

- **Corrosivity** (gas composition, liquid chemistry)

- **Optional Factors**

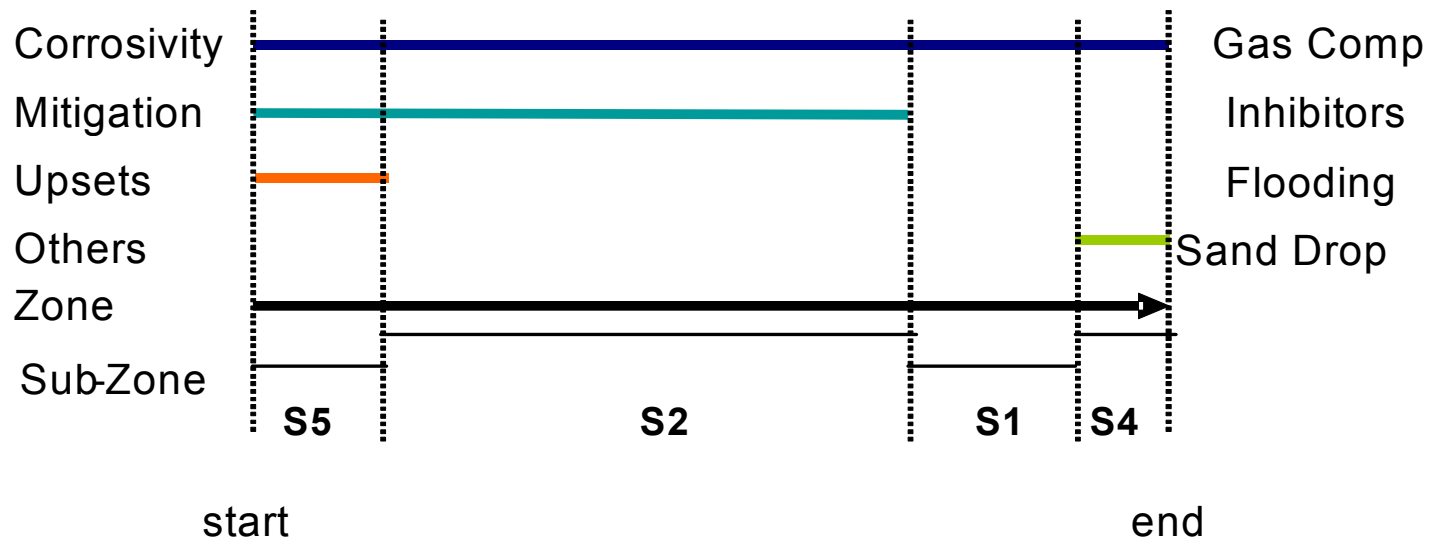
- **Mitigation** (inhibitor, biocides)

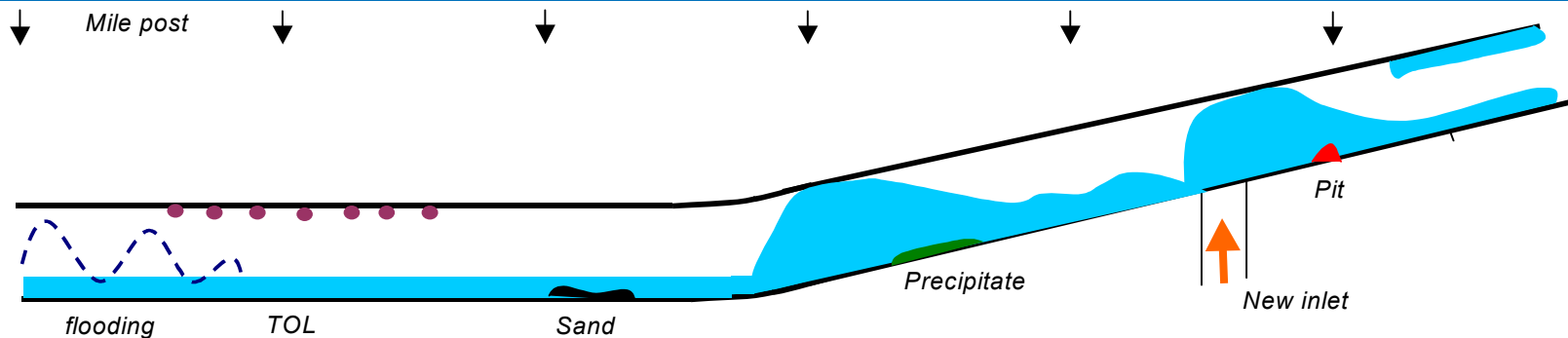
- **Upsets** (flow, fluid chemistry, pipeline surface conditions)

- **Other factors** (bacteria, liquid hydrocarbons, solids)

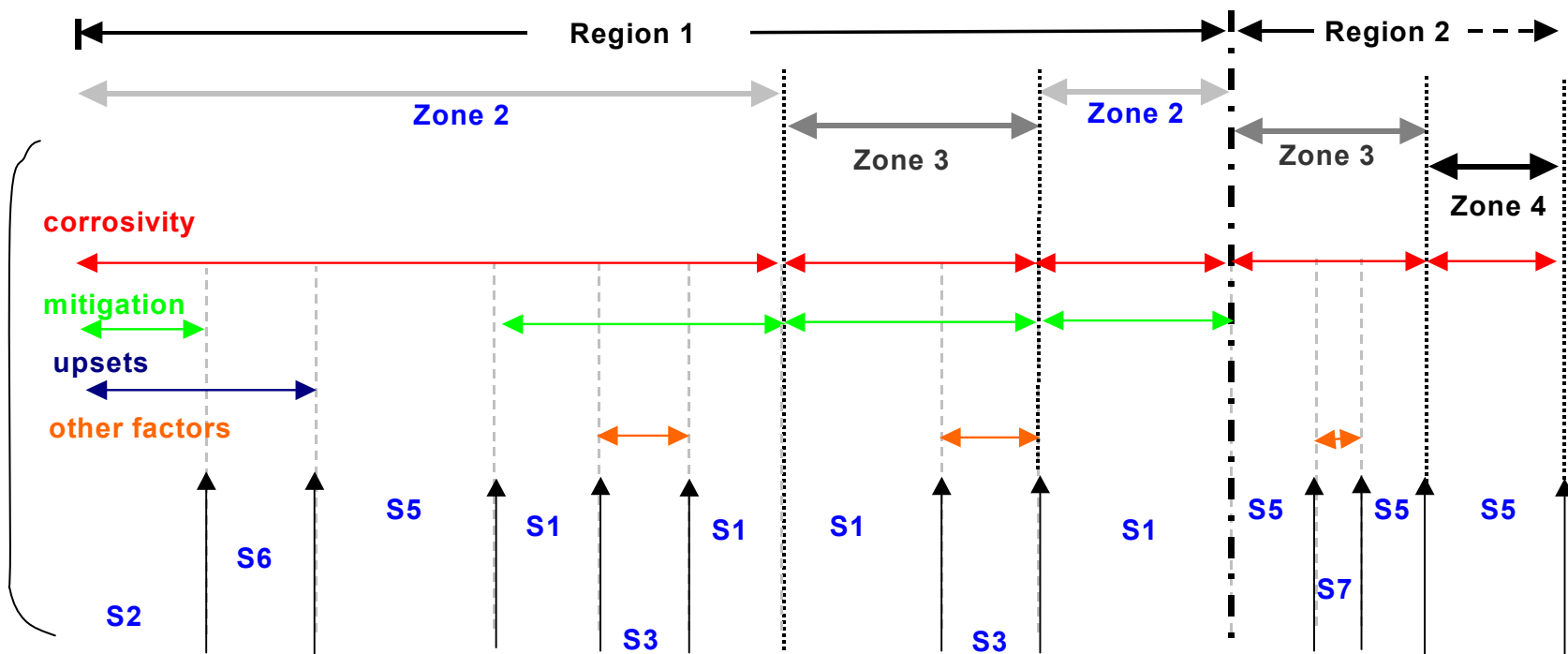
Segmenting Concept

Sub-Zone Determination

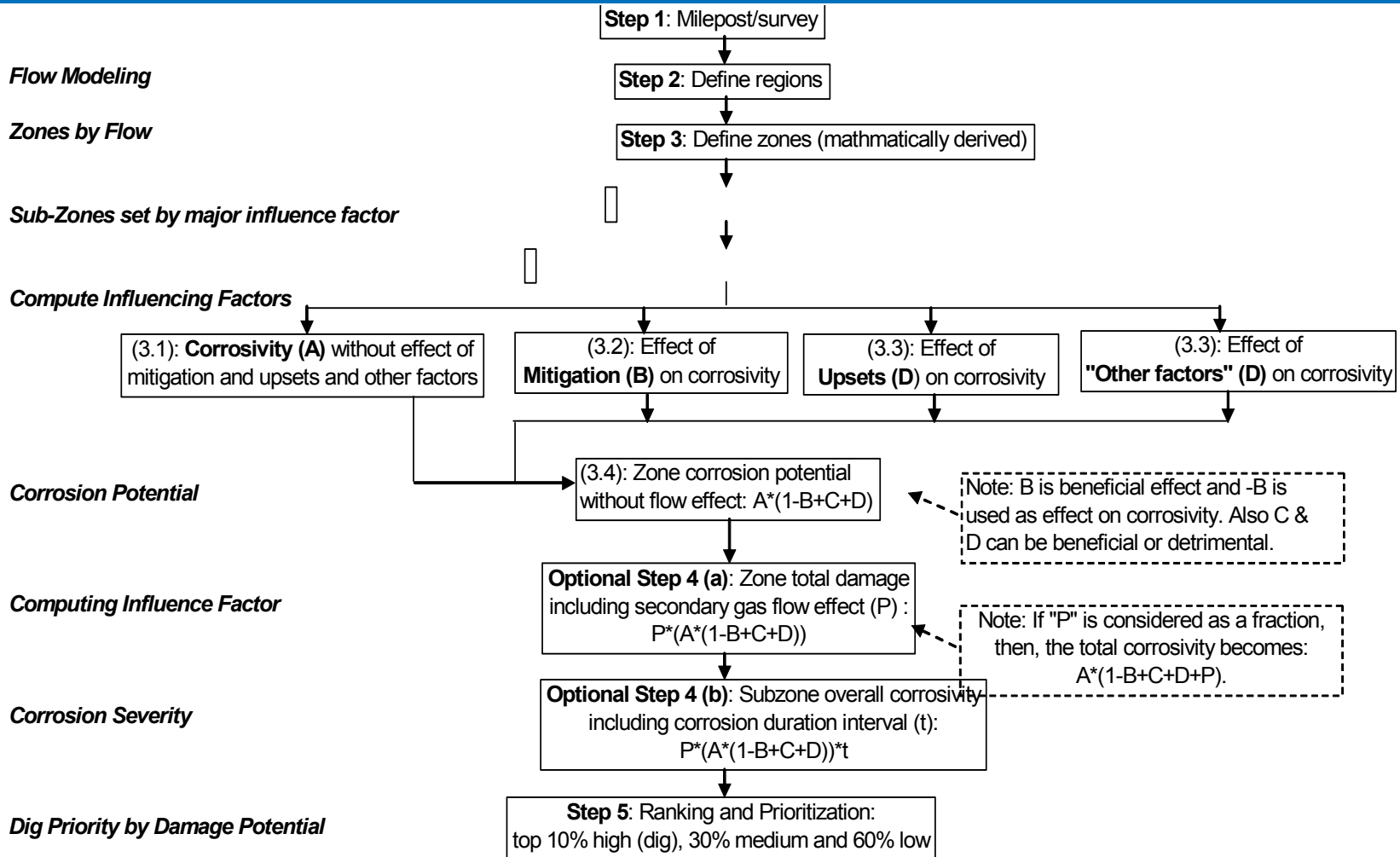




Zones & Segments



Flow Chart Jan/07



Research Needs

- Influencing Factors
 - Corrosivity
 - Mitigation
 - Upsets
 - Other (bacteria, liquids, hydrocarbons)
- Detection Inspection Techniques
 - Guided Wave
 - Length of the investigation
- ICDA Wet Gas Process Verification