



U.S. Department of Transportation
Federal Highway Administration
 Office of Federal Lands Highway



Mission: Improving transportation to and within federal and tribal lands by providing technical services to the highway transportation community.

This report only includes **FY 13** and **FY 14**.

For updated information, please visit: <http://www.cflhd.gov/programs/flap/nm/index.cfm>

If you have questions, please contact:

Mark (Andy) Byra, Acting FLAP Coordinator
 720-963-3550, andy.byra@dot.gov

Morgan Malley, Lead Planner
 720-963-3605, morgan.malley@dot.gov

Programming Decision Committee (PDC) members:

Ryan Tyler, FHWA Representative
ryan.tyler@dot.gov

Elias Archuleta, State Representative
elias.archuleta@state.nm.us

Steve Kopelman, Local Representative
skopelman@nmcounties.org

Federal Lands Access Program (FLAP)

Improving access to and within Federal and tribal lands

New Mexico

MAP-21 Funding Authorized:

FY 2013: \$5,785,238

FY 2014: \$5,828,697

Federal land acreage for the five core FLMAs: 30 percent

Federal public road miles: 2,192

Number of Federal public bridges: 56

Recreational visitation: 8,805,121 visitors per year

Highlighted Project: *Cuba la Cueva*

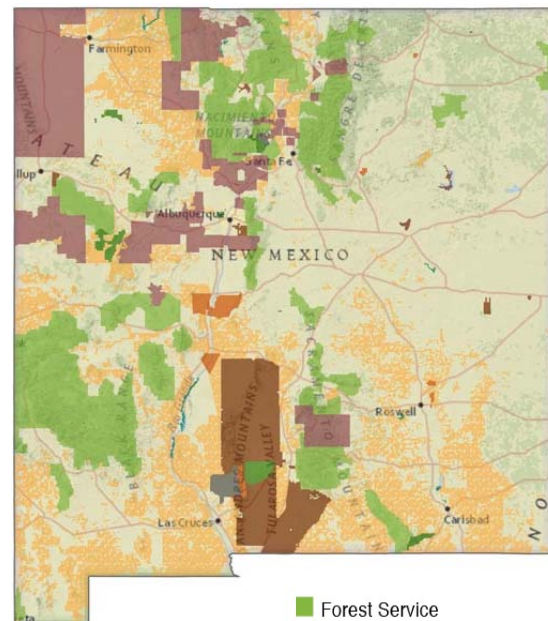
Constructed: FY 14-15

Success Story:

This project continues work completed in 2003 under the Forrest Highway program on NM State Highway 126 located in in the Santa Fe National Forest, Sandoval County, New Mexico.

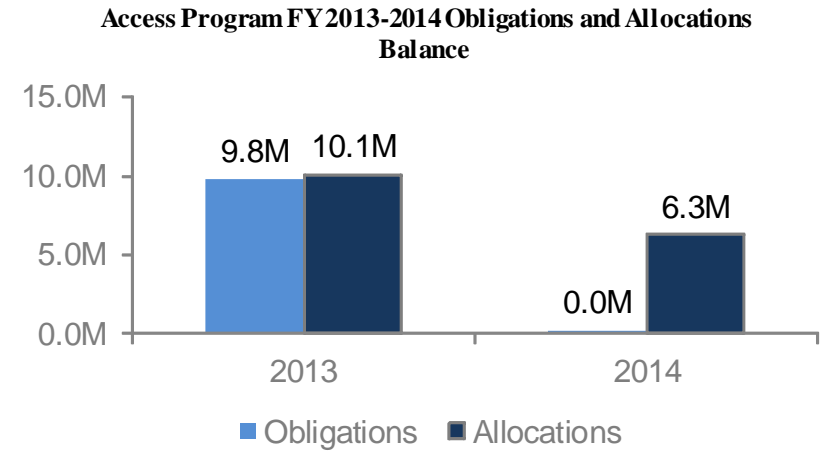
This project consisted of grading, drainage, aggregate base, and asphalt surfacing of approximately 2 miles of roadway and also included curve realignments, a new bridge structure, wetland mitigation, excavation, and drainage improvements. Final design services and construction contracting, as well as onsite stewardship and oversight.

Through successful collaboration, the project delivery schedule was accelerated by utilizing on-site earthwork that resulted in a time savings of 15 percent.



Cuba la Cueva, During Construction activities on 26 ft span by 13 ft rise structural plate culvert

FLAP Project Selection Process		
Call for Projects	Number of Applications Received	Total Access Program Funds Requested
March 15, 2013 — May 15, 2013	6	\$8,002,990
October 1, 2013 — January 10, 2014	7	\$21,300,814



FLAP Program of Projects*						
Project Name	Improvement Type	FLMA Accessed	Federal Land's Unit	Delivery Year	Delivery Agency	Owner Agency
State Route 126 (Cuba - La Cueva)	4R Maintenance-Restoration & Rehabilitation	FS	FS - Santa Fe National Forest	2013	CFLHD, FHWA	NM DOT
US 82 (Alamogordo - Elk)	4R Maintenance-Restoration & Rehabilitation	FS	FS - Lincoln National Forest	2013	CFLHD, FHWA	NM DOT
Gila Cliff Dwellings Highway Bridge Replacement	Bridge Replacement	FS	FS - Gila National Forest	2014	CFLHD, FHWA	NM DOT
Dripping Springs and Baylor Canyon Roads	4R Maintenance-Restoration & Rehabilitation	BLM	BLM - Las Cruces District Office	2015	CFLHD, FHWA	Doña Ana County
2nd Street SW Corridor Project	Facilities for Pedestrians & Bicycles	FWS	FWS - Valle de Oro National Wildlife Refuge	2016	CFLHD, FHWA	Bernalillo County
El Camino Real Buckman Road	Facilities for Pedestrians & Bicycles	FS/ BLM/ NPS	FS - Santa Fe NF/BLM - Taos Field Office/ NPS - National Trails Intermountain Region	2016	CFLHD, FHWA	Santa Fe County

*This information is an overview of the FLAP projects information. It is subject to change at any time. For additional details or clarifications, please contact the Federal Lands Highway Division offices or visit the State FLAP webpage.