



U.S. Department of Transportation
Federal Highway Administration
 Office of Federal Lands Highway



Mission: Improving transportation to and within Federal and tribal lands by providing technical services to the highway transportation community.

This report only includes **FY 13** and **FY 14**.

For updated information, please visit:

<http://www.wfl.fhwa.dot.gov/programs/flap/mt/>

If you have questions, please contact:

John Snyder, Business Develop Manager,
 (360) 619-7898, john.snyder@dot.gov

Pete Field, Acting FLAP Manager,
 (360) 619-7619, peter.field@dot.gov

Programming Decision Committee (PDC) members:

Phyllis Chun, FHWA Representative
phyllis.chun@dot.gov

Lynn Zanto, State Representative
lzanto@mt.gov

Harold Blattie, Local Representative
hblattie@mtcounties.org

Federal Lands Access Program (FLAP)

Improving access to and within Federal and tribal lands

Montana

MAP-21 Funding Authorized:

FY 2013: \$22,789,053

FY 2014: \$22,960,245

Federal land acreage for five core FLMAs: 30 percent

Federal public road miles: 9,707

Number of Federal public bridges: 606

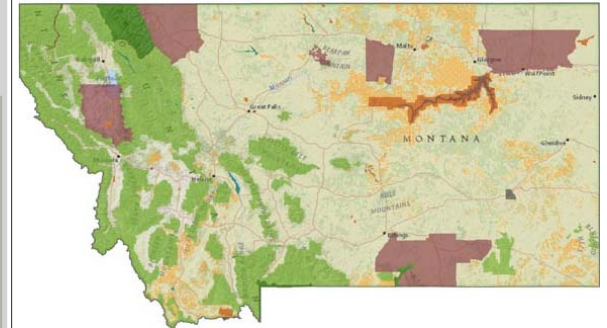
Recreational visitation: 17,780,132 visitors per year

Success story: Bozeman to Bridger Mountains Trail

This enhancement project, now in the planning stage, will construct a bicycle-pedestrian path along Montana Highway 86, Bridger Canyon Road. The two-mile long path will link the existing 60 miles of greenway trails in the *Main Street to the Mountains* trail system, providing a link between Bozeman and the highest use trailhead in the Gallatin National Forest. The proposed trail will potentially alleviate some of the congestion that currently occurs as users drive their cars to the trailheads at the M parking lot and lessen the constriction that occurs when the shoulders of MT 86 are utilized for overflow parking.

Final design will begin in the second quarter of 2015, once project feasibility and NEPA/Environmental phases have been completed. Construction is anticipated to begin in 2016.

The Montana PDC looks for projects where the investment level of FLAP funding is proportional to the percentage of traffic directly related to federal lands. The PDC chooses projects that preserve existing Federal lands access and restore the serviceability of the assets, placing less emphasis on new facilities but focusing instead on maintaining the capacity of, or enhancements to, existing facilities. It also looks for projects that preserve access to high-use Federal recreation sites and economic generators; or that prevent the loss of important access that can happen through such events as bridge closures or landslides.



Bozeman to Bridger Mountains Trail, Gallatin N.F., Montana

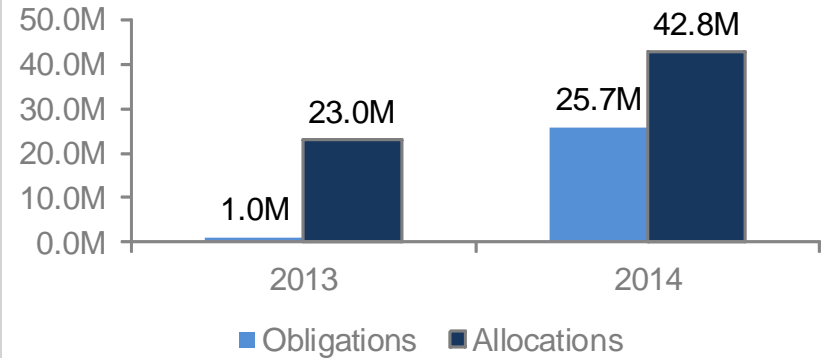
FLAP Project Selection Process

PDC approves WFL to issue a request for proposals (RFP) for certain types of projects, WFL conducts informational webinar, proposals for projects are submitted to WFL, eligible project proposals are ranked by Technical Advisory Group (TAG) made up of FLMA's and WFL staff, TAG makes preliminary recommendations to PDC, TAG performs field reviews for some projects, TAG collects additional data and makes final recommendations to PDC, PDC makes final programming decision on project proposals and awards FLAP funds to projects.

The Montana PDC issued a RFP in 2013 and two in 2014. Project selection factors include: high use federal recreation sites, economic generators, safety, environmental quality, readiness, preservation of existing access and serviceability. The total FLAP funds requested from these three RFPs was \$278,964,716.

The Montana PDC is on a two year cycle for issuing RFPs, the next is scheduled for 2016.

Access Program FY 2013-2014 Obligations and Allocations Balance



FLAP Program of Projects*

Project Name	Improvement Type	FLMA Accessed	Federal Land's Unit	Delivery Year	Delivery Agency	Owner Agency
Pioneer Mountains Scenic Byway	4R Maintenance-Restoration and Rehabilitation	FS	FS - Beaverhead and Deerlodge National Forests	2013	Western Federal Lands - FHWA	Beaverhead County
Beartooth Road Resurfacing	4R Maintenance-Restoration and Rehabilitation	FS / BLM	FS - Helena National Forest / BLM - Butte Office	2014	Lewis and Clark County	Lewis and Clark County
Big Sheep Creek Road and Bridge Restoration	4R Maintenance-Restoration and Rehabilitation	FS / BLM	FS - Beaverhead National Forest / BLM - Dillon Office	2014	Beaverhead County	Beaverhead County
Blacktail Road Surface Improvement	4R Maintenance-Restoration and Rehabilitation	FS	FS - Flathead National Forest	2014	Western Federal Lands - FHWA	Flathead County
Gardiner Gateway	4R Maintenance-Restoration and Rehabilitation	NPS / FS	NPS - Glacier National Park / FS - Gallatin Forest	2014	Western Federal Lands - FHWA	Park County
MT 117 Fort Peck Northeast	4R Maintenance-Restoration and Rehabilitation	FWS / USACE	FWS - Charles M Russell NWR / USACE - Fort Peck Dam	2014	Montana Department of Transportation	Montana Department of Transportation

FLAP Program of Projects*

Project Name	Improvement Type	FLMA Accessed	Federal Land's Unit	Delivery Year	Delivery Agency	Owner Agency
MT 569 N and S of Moose Creek	4R Maintenance-Restoration and Rehabilitation	FS	FS - Beaverhead and Deerlodge National Forests	2014	Montana Department of Transportation	Montana Department of Transportation
Rimini Road	4R Maintenance-Restoration and Rehabilitation	FS	FS - Helena National Forest	2014	Western Federal Lands Highway Division, FHWA	Lewis and Clark County
Rock Creek Roads Stabilization	4R Maintenance-Restoration and Rehabilitation	FWS / USACE	FWS - Charles M Russell NWR / USACE - Fort Peck Dam	2014	Western Federal Lands Highway Division, FHWA	McCone and Garfield Counties
US 89 Browning West	4R Maintenance-Restoration and Rehabilitation	NPS	NPS - Glacier National Park	2014	Montana Department of Transportation	Montana Department of Transportation
West Fork Rock Creek Road Reconstruction	4R Maintenance-Restoration and Rehabilitation	FS	FS - Custer National Forest	2014	Western Federal Lands Highway Division, FHWA	Carbon County
Bozeman to Bridger Mountains Trail	Facilities for Pedestrians and Bicycles	FS / FWS	FS - Gallatin National Forest / FWS - Fish Tech Center	2015	Western Federal Lands Highway Division, FHWA	City of Bozeman
Elk Lake Road Construction	New Construction	FWS / FS	FWS - Red Rock NWR / FS - Beaverhead and Deerlodge	2015	Western Federal Lands Highway Division, FHWA	Beaverhead County
Old Highway 2 and Bridge Restoration	4R Maintenance-Restoration and Rehabilitation	FWS	FWS - Bowdoin National Wildlife Refuge	2015	Western Federal Lands Highway Division, FHWA	Phillips County
Peninsula Access Road	New Construction	FS	FS - Lolo National Forest	2015	Montana Department of Transportation	Montana Department of Transportation
US 89 East of Kiowa Junction	4R Maintenance-Restoration and Rehabilitation	NPS	NPS - Glacier National Park	2015	Montana Department of Transportation	Montana Department of Transportation

FLAP Program of Projects*

Project Name	Improvement Type	FLMA Accessed	Federal Land's Unit	Delivery Year	Delivery Agency	Owner Agency
West Rosebud Creek Road Reconstruction	4R Maintenance-Restoration and Rehabilitation	FS	FS - Custer National Forest	2015	Western Federal Lands Highway Division, FHWA	Stillwater County
Main Boulder River Road Improvements	4R Maintenance-Restoration and Rehabilitation	FS	FS - Gallatin National Forest	2016	Western Federal Lands Highway Division, FHWA	Sweet Grass County
MT 236 South of Big Sandy	4R Maintenance-Restoration and Rehabilitation	BLM	BLM - Havre Field Office	2016	Western Federal Lands Highway Division, FHWA	Montana Department of Transportation
Pleasant Valley Road Relocation	New Construction	FWS / FS	FWS - Lost Trail NWR / FS Flathead and Kootenai Forests	2016	Western Federal Lands Highway Division, FHWA	Flathead County
US 89 North and South of Kiowa Junction	4R Maintenance-Restoration and Rehabilitation	NPS	NPS - Glacier National Park	2016	Montana Department of Transportation	Montana Department of Transportation
US 2 Hungry Horse West	4R Maintenance-Restoration and Rehabilitation	NPS / FS	NPS - Glacier National Park / FS - Flathead Forest	2017	Montana Department of Transportation	Montana Department of Transportation
US 89 North of Kiowa Junction	4R Maintenance-Restoration and Rehabilitation	NPS	NPS - Glacier National Park	2017	Montana Department of Transportation	Montana Department of Transportation
Mill Creek Road Surface Preservation Project	Surface Preservation - Preventive Maintenance	FS	FS - Custer-Gallatin National Forest	2015	Western Federal Lands Highway Division, FHWA	Park County and Gallatin National Forest
York - Nelson Road (York North) Resurfacing	Surface Preservation - Preventive Maintenance	FS	FS - Helena National Forest	2015	Lewis and Clark County	Lewis and Clark County

FLAP Program of Projects*

Project Name	Improvement Type	FLMA Accessed	Federal Land's Unit	Delivery Year	Delivery Agency	Owner Agency
Fresno Reservoir Road Surface Preservation Project	Surface Preservation - Preventive Maintenance	BOR	BOR - Fresno Reservoir	2015	TBD	Hill County
Stemple Pass Road North Resurfacing	Surface Preservation - Preventive Maintenance	FS	FS - Helena National Forest	2015	Lewis and Clark County	Lewis and Clark County
Cliff and Wade Lake Road Gravel Surface Preservation Project	Surface Preservation - Preventive Maintenance	FS	FS - Beaverhead-Deerlodge National Forest	2015	Western Federal Lands Highway Division, FHWA	Madison County and Beaverhead-Deerlodge National Forest
Charles M Russell Wildlife Refuge Access Road Reconstruction and Resurfacing	Surface Preservation - Preventive Maintenance	FWS / BLM/ USACE	Charles M Russell Wildlife Refuge, BLM, Army Corps of Engineers	2015	Western Federal Lands Highway Division, FHWA	Phillips County
Little Blackfoot Road Surface Preservation	Surface Preservation - Preventive Maintenance	FS	Helena NF	2015	Western Federal Lands Highway Division, FHWA	Powell County
Nye Road Chip Seal Project	Surface Preservation - Preventive Maintenance	FS	FS - Custer National Forest	2015	Western Federal Lands Highway Division, FHWA	Stillwater County
North Fork Project	Surface Preservation - Preventive Maintenance	FS	FS- Lewis and Clark National Forest	2015	Western Federal Lands Highway Division, FHWA	Teton County
Hudson Bay Divide - South	4R Maintenance-Restoration and Rehabilitation	NPS	NPS - Glacier National Park	TBD	Montana Department of Transportation	Montana Department of Transportation
Tom Miner Creek Road Capital Improvements Project	4R Maintenance-Restoration and Rehabilitation	FS, NPS	FS - Custer Gallatin National Forest/ Yellowstone National Park	TBD	Park County	Park County and Custer Gallatin National Forest

FLAP Program of Projects*

Project Name	Improvement Type	FLMA Accessed	Federal Land's Unit	Delivery Year	Delivery Agency	Owner Agency
Boulder South	4R Maintenance-Restoration and Rehabilitation	FS	FS - Beaverhead-Deerlodge National Forest	TBD	Montana Department of Transportation	Montana Department of Transportation
Marysville Road - Corridor Completion	4R Maintenance-Restoration and Rehabilitation	FS, BLM	FS - Helena National Forest/ BLM	TBD	Lewis and Clark County	Lewis and Clark County
Gateway to Glacier Trail	Pedestrian and Bike Facility	NPS, FS	NPS - Glacier National Park; FS - Flathead National Forest	TBD	Montana Department of Transportation	Montana Department of Transportation
Replace Two (2) Optima Buses within East Side Shuttle Operations	Transit	NPS	NPS - Glacier National Park	TBD	Flathead County/ Eagle Transit	National Park Service
North of Jordan	4R Maintenance-Restoration and Rehabilitation	FWS, BLM	FWS - CMR National Wildlife Refuge; BLM - Fort Peck Lake	TBD	Western Federal Lands Highway Division, FHWA	Montana Department of Transportation
North of Moose Cr North	4R Maintenance-Restoration and Rehabilitation	FS, BLM	FS - Beaverhead-Deerlodge National Forest; BLM -Anaconda - Pintler Wilderness	TBD	Western Federal Lands Highway Division, FHWA	Montana Department of Transportation
Biddle East	4R Maintenance-Restoration and Rehabilitation	BLM	BLM - Oil Field Lease	TBD	Western Federal Lands Highway Division, FHWA	Powder River County Road and Bridge Department and State of Montana
Moulton Road Safety and Realignment Project	4R Maintenance-Restoration and Rehabilitation	FS	FS—Beaverhead-Deerlodge National Forest	TBD	Western Federal Lands Highway Division, FHWA	City-County of Butte-Silver Bow
Maiden Road	4R Maintenance-Restoration and Rehabilitation	BLM	BLM	TBD	Western Federal Lands Highway Division, FHWA	Montana Department of Transportation

FLAP Program of Projects*

Project Name	Improvement Type	FLMA Accessed	Federal Land's Unit	Delivery Year	Delivery Agency	Owner Agency
Short Oil Road Asphalt Overlay	Surface Preservation - Preventive Maintenance	FWS,	CM Russell Wildlife Refuge; USACE - Campground; BLM - Fort Peck Lake	TBD	Western Federal Lands Highway Division, FHWA	Phillips County
Blacktail Road Surface Improvement Phase 2	4R Maintenance-Restoration and Rehabilitation	FS	FS - Flathead National Forest	TBD	Western Federal Lands Highway Division, FHWA	Flathead County

* This information is an overview of the FLAP projects information. It is subject to change at any time. For additional details or clarifications, please contact the Federal Lands Highway Division offices or visit the State FLAP webpage.