



U.S. Department of Transportation  
**Federal Highway Administration**  
 Office of Federal Lands Highway



Mission: Improving transportation to and within Federal and tribal lands by providing technical services to the highway transportation community.

This report only includes **FY 13** and **FY 14**.  
 For updated information, please visit: <http://www.cflhd.gov/programs/flap/az/index.cfm>

If you have questions, please contact:  
**Mark (Andy) Byra**, Acting FLAP Coordinator  
 720-963-3550, [andy.byra@dot.gov](mailto:andy.byra@dot.gov)

**Morgan Malley**, Lead Planner  
 720-963-3605, [morgan.malley@dot.gov](mailto:morgan.malley@dot.gov)

Programming Decision Committee (PDC) members:

Ryan Tyler, FHWA Representative  
[ryan.tyler@dot.gov](mailto:ryan.tyler@dot.gov)

David Eberhart, State Representative  
[deberhart@azdot.gov](mailto:deberhart@azdot.gov)

Mike Ortega, Local Representative  
[mortega@cochise.az.gov](mailto:mortega@cochise.az.gov)

## Federal Lands Access Program (FLAP)

Improving access to and within Federal and tribal lands

# Arizona

MAP-21 Funding Authorized:

FY 2013: \$13,523,234

FY 2014: \$13,624,821

Federal land acreage for the five core FLMAs: 39 percent

Federal public road miles: 4252.83

Number of Federal public bridges: 77

Recreational visitation: 33,835,946 visitors per year

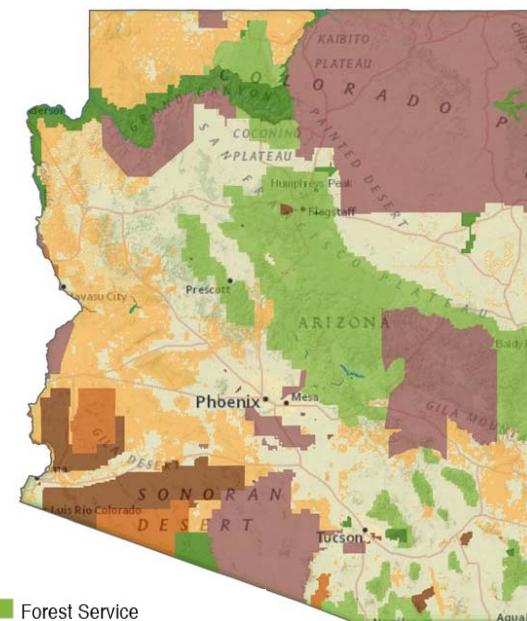
**Highlighted Project:** Alpine - Big Lake named *Three Forks Road*

**To Be Constructed:** FY 15

### Success Story:

This project was previously scoped under the Forest Highway (FH) Program for 15 miles of roadway improvements with varied surfacing type. The initial 6 miles was to be paved with the remaining 9 miles to be a gravel surface, due to funding constraints the FH program.

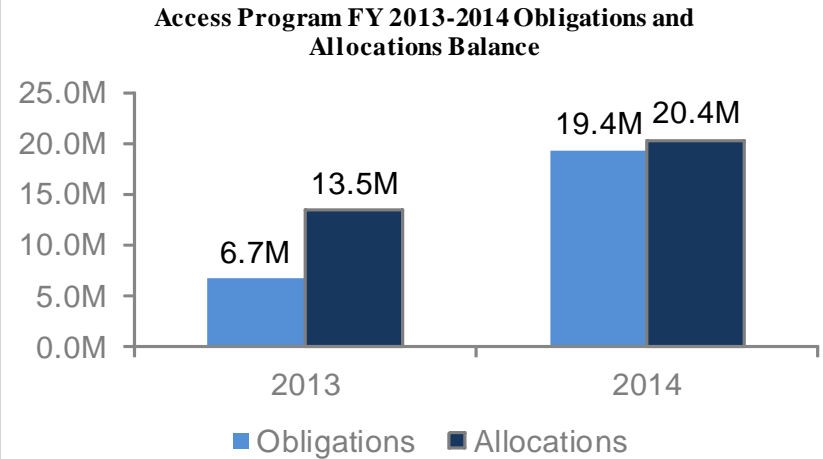
However, through successful collaboration between the Apache County and Apache/Sitgreaves National Forest a maintenance agreement was developed where the Apache County agreed to maintain the road allowing this legacy project to move forward and become eligible for FLAP funds. Moreover, with these FLAP funds the scope was able to be increased over the previously programmed project to include paved surface for the full project length, proving mutually beneficial to all partners.



*Three Forks Road, Pre-Construction*

### FLAP Project Selection Process

Call for Projects	Number of Applications Received	Total Access Program Funds Requested
January 2, 2013 - February 28, 2013	35	\$233,635,719



### FLAP Program of Projects\*

Project Name	Improvement Type	FLMA Accessed	Federal Land's Unit	Delivery Year	Delivery Agency	Owner Agency
Control Road, Houston Mesa Road and Reynolds Creek Bridges	Bridge Replacement	FS	FS - Tonto National Forest	2013	CFLHD, FHWA	Gila County/ Arizona DOT
Alpine - Big Lake	4R Maintenance-Restoration and Rehabilitation	FS	FS - Apache-Sitgreaves National Forest	2014	CFLHD, FHWA	Apache County
Ash Canyon Crossing	Reconstruction- No Added Capacity	FS/NPS	FS - Coronado Forest / NPS - Coronado Memorial	2014	CFLHD, FHWA	Cochise County
State Highway 89A (aka Flagstaff-Vista Overlook)	4R Maintenance-Restoration and Rehabilitation	FS	FS - Coconino National Forest	2015	CFLHD, FHWA	Arizona DOT
Lake Mary Road (aka as Flagstaff - Clint Wells)	Reconstruction- Added Capacity	FS	FS - Coconino National Forest	2017	CFLHD, FHWA	Coconino County
Lynx Bridge, Red Rock Loop Road and Thumb Butte Road	4R Maintenance-Restoration and Rehabilitation	FS	FS - Prescott and Coconino National Forests	2017	CFLHD, FHWA	Yavapai County
Martinez Lake Road	4R Maintenance-Restoration and Rehabilitation	DOD/ FWS / BLM	DOD - Yuma PG / FWS - Imperial NWR / BLM - Yuma	2018	CFLHD, FHWA	Yuma County

\*This information is an overview of the FLAP projects information. It is subject to change at any time. For additional details or clarifications, please contact the Federal Lands Highway Division offices or visit the State FLAP webpage.