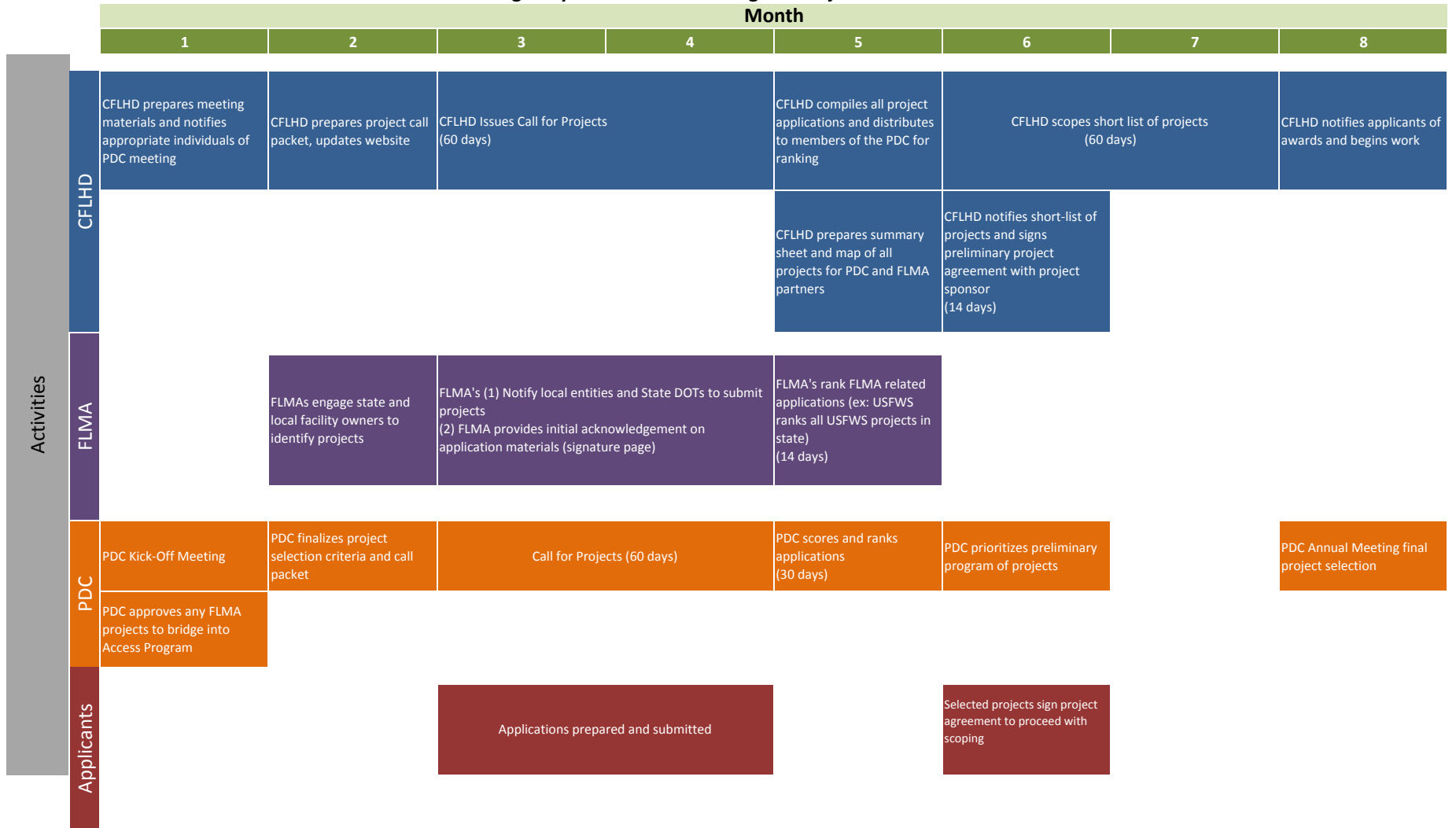


Central Federal Lands Highway Division -Access Program Project Selection Process - Level 1 States



Notes: This diagram is subject to change based on the needs, funding availability, and staff/PDC time constraints.
 Coordination takes place as either "Level 1" or "Level 2", "Level 1" applies to all states. "Level 2" is for key states with large program amounts.
 Scoping may not be applicable for all projects.
 FLMA is an abbreviation for Federal Lands Management Agency.
 The number of days is in calendar days.
 PDC is an abbreviation for Programming Decisions Committee.
 For guidance on the program, see: <http://www.fhwa.dot.gov/map21/guidance/guideflap.cfm>
 For information on CFLHD's roll-out of the program, see: www.cflhd.gov/programs/flap/