



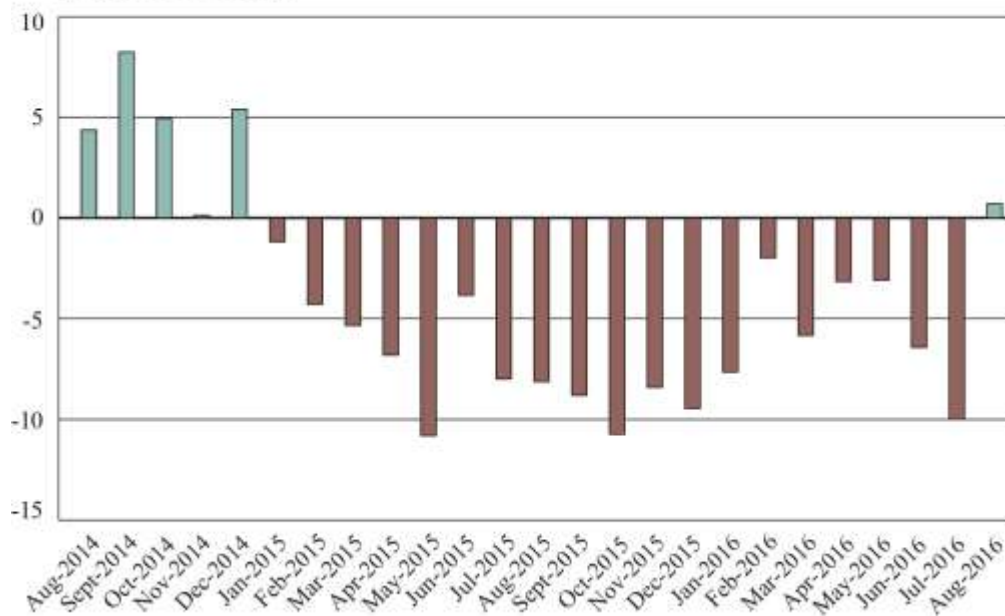
U.S. Department of Transportation  
 Office of Public Affairs  
 1200 New Jersey Avenue, SE  
 Washington, DC 20590  
<http://www.dot.gov/briefingroom>

**BTS Data**

BTS 55-16  
 Thursday, October 27, 2016  
 Contact: Dave Smallen  
 Tel: 202-366-5568  
[david.smallen@dot.gov](mailto:david.smallen@dot.gov)

**August 2016 North American Freight Numbers**

**Figure 1. U.S.-NAFTA Freight Value Percent Change from Previous Year (Last 24 months)**

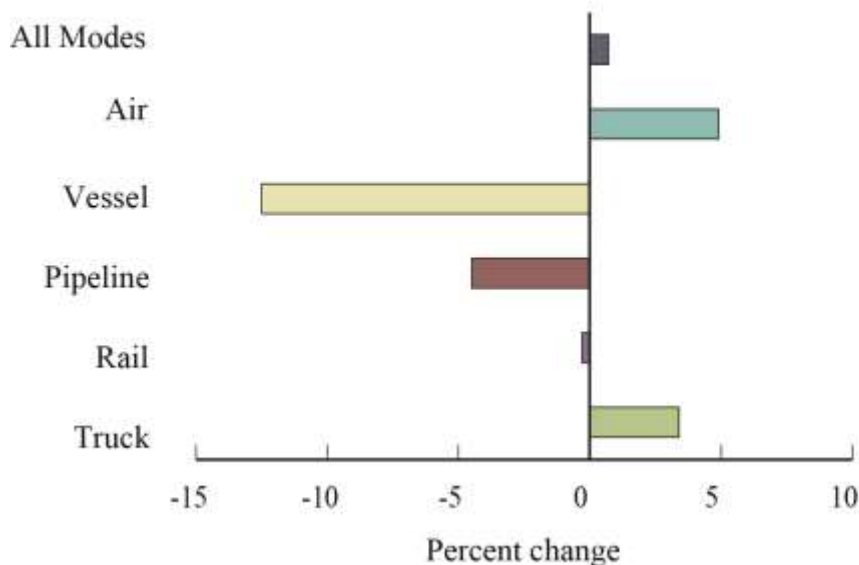


SOURCE: Bureau of Transportation Statistics, [TransBorder Freight Data](#)

Two transportation modes – air and truck – carried more cross-border freight by value in August 2016 compared to August 2015, resulting in a 0.7 percent increase to \$93.1 billion in the total current dollar value of freight moved. August was the first month since December 2014 where the total value of U.S. freight with North American Free Trade Agreement (NAFTA) partners Canada and Mexico increased from the same month of the previous year, according to the TransBorder Freight Data released today by the U.S. Department of Transportation’s Bureau of Transportation Statistics (BTS) (Figure 1, Table 1).

## Freight by Mode

**Figure 2. Percent Change in Value of U.S.-NAFTA Freight Flows by Mode: August 2015-2016**



SOURCE: Bureau of Transportation Statistics, [TransBorder Freight Data](#)

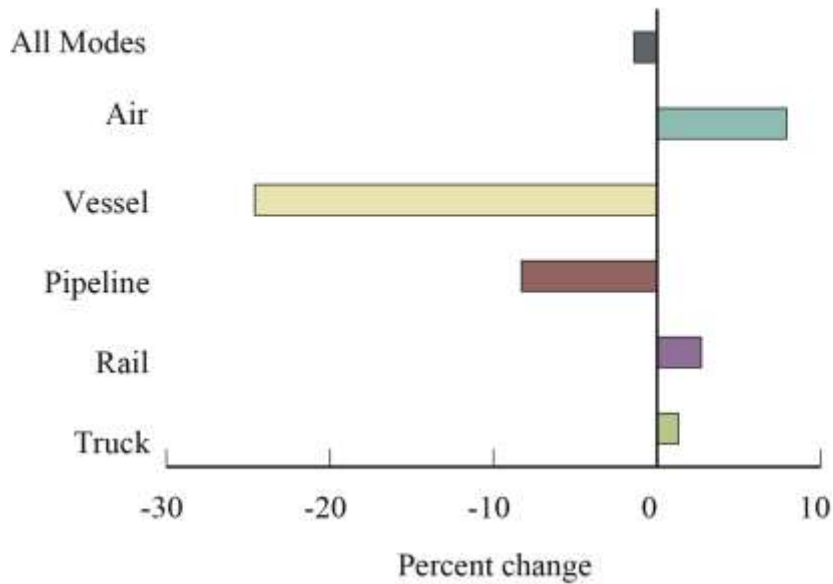
The value of commodities moving by air and truck increased 4.9 percent and 3.4 percent respectively, while the value of freight carried on other modes decreased: rail by 0.3 percent; pipeline by 4.5 percent and vessel by 12.5 percent (Figure 2, Table 2).

Trucks carried 65.3 percent of U.S.-NAFTA freight and continued to be the most heavily utilized mode for moving goods to and from both U.S.-NAFTA partners. Trucks accounted for \$31.2 billion of the \$49.7 billion of imports (62.8 percent) and \$29.6 billion of the \$43.4 billion of exports (68.3 percent) (Table 2).

Rail remained the second largest mode by value, moving 15.3 percent of all U.S.-NAFTA freight, followed by vessel, 5.8 percent; pipeline, 5.1 percent; and air, 3.7 percent. The surface transportation modes of truck, rail and pipeline carried 85.7 percent of the total value of U.S.-NAFTA freight flows (Table 2).

## U.S.-Canada Freight

**Figure 3. Percent Change in Value of U.S.-Canada Freight Flows by Mode: August 2015-2016**



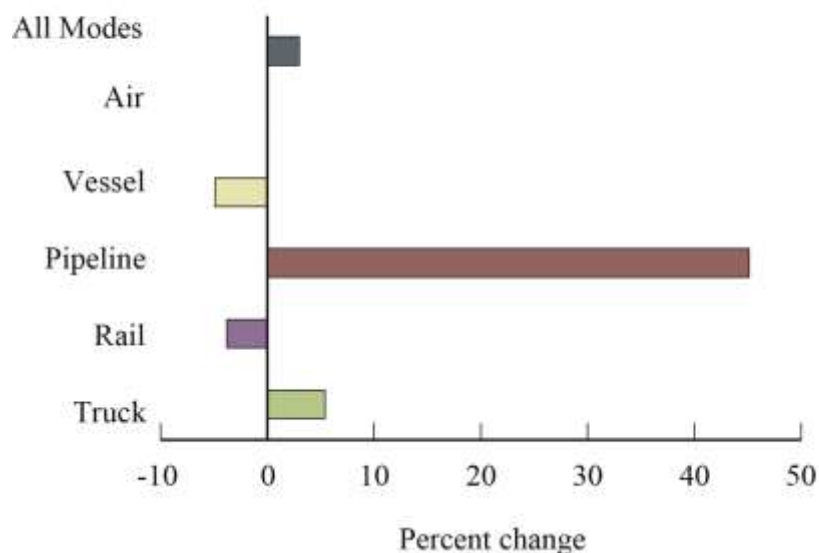
SOURCE: Bureau of Transportation Statistics, [TransBorder Freight Data](#)

From August 2015 to August 2016, three transportation modes – air, rail, and truck – carried a higher value of U.S.-Canada freight than a year earlier. However, the total value of U.S.-Canada freight fell to \$47.3 billion, down 1.4 percent from a year earlier, due to decreases in the value of goods moved by vessel and pipeline (Figure 3, Table 3).

Trucks carried 59.6 percent of the value of the freight to and from Canada. Rail carried 16.5 percent followed by pipeline, 9.0 percent; air, 4.7 percent; and vessel, 3.8 percent. The surface transportation modes of truck, rail and pipeline carried 85.1 percent of the value of total U.S.-Canada freight flows (Table 3).

## U.S.-Mexico Freight

**Figure 4. Percent Change in Value of U.S.-Mexico Freight Flows by Mode: August 2015-2016**



SOURCE: Bureau of Transportation Statistics, [TransBorder Freight Data](#)

From August 2015 to August 2016, the value of U.S.-Mexico freight increased 3.0 percent to \$45.8 billion as three modes of transportation – pipeline, truck and air – carried a higher value of U.S.-Mexico freight than a year earlier. Freight carried by pipeline increased by 45.1 percent, truck by 5.4 percent and air by 0.1 percent. Rail decreased 3.8 percent and vessel decreased by 4.9 percent (Figure 4, Table 4).

Trucks carried 71.2 percent of the value of freight to and from Mexico. Rail carried 14.1 percent followed by vessel, 7.8 percent; air, 2.8 percent; and pipeline, 1.1 percent. The surface transportation modes of truck, rail and pipeline carried 86.4 percent of the value of total U.S.-Mexico freight flows (Table 4).

### Commodities

In August 2016, the top commodity category transported between the U.S. and Canada by all modes was vehicles and parts, of which \$5.2 billion, or 55.1 percent, moved by truck and \$4.0 billion, or 42.5 percent, moved by rail (Figure 5). The top commodity category transported between the U.S. and Mexico by all modes in August 2016 was electrical machinery, of which \$7.4 billion, or 79.5 percent, moved by truck (Figure 6).

### Reporting Notes

BTS press releases and the BTS website define surface transportation modes as truck, rail and pipeline. See [North American TransBorder Freight Data](#) on the BTS website for additional data for surface modes since 1995 and all modes since 2004. The category of all modes of

transportation cited in the following tables includes freight movements by truck, rail, vessel, pipeline, air, [other](#) and unknown modes of transport.

Data in this press release are not seasonally adjusted and are not adjusted for inflation. Additional summary data adjusted for inflation and exchange rates can be found on the BTS website under [TransBorder Indexed Freight Flow Data](#). The BLS indexes used in the adjustments for inflation and exchange rates might be revised in each of the three months after original publication. For previous press releases and summary tables, see [TransBorder Press Releases](#). See [TransBorder Freight Data](#) for data from previous months, and for additional state, port, and commodity data. BTS has scheduled the release of September TransBorder numbers for Nov. 29.

**Table 1. Value of Monthly U.S.-NAFTA Freight Flows**  
(millions of current dollars)

Month	2014	2015	2016	Percent Change 2014-2015	Percent Change 2015-2016
January	90,326	89,258	82,430	-1.2	-7.7
February	89,557	85,723	84,038	-4.3	-2.0
March	101,478	96,070	90,462	-5.3	-5.8
April	100,141	93,327	90,380	-6.8	-3.2
May	103,942	92,707	89,840	-10.8	-3.1
June	102,978	99,030	92,671	-3.8	-6.4
July	101,075	92,995	83,725	-8.0	-10.0
<b>August</b>	<b>100,624</b>	<b>92,442</b>	<b>93,126</b>	<b>-8.1</b>	<b>0.7</b>
September	102,245	93,246		-8.8	
October	108,243	96,624		-10.7	
November	96,252	88,154		-8.4	
December	95,811	86,748		-9.5	
<b>Year-to-date</b>	<b>790,121</b>	<b>741,553</b>	<b>706,672</b>	<b>-6.1</b>	<b>-4.7</b>
<b>Annual</b>	<b>1,192,671</b>	<b>1,106,325</b>		<b>-7.2</b>	

SOURCE: Bureau of Transportation Statistics, [TransBorder Freight Data](#)

NOTE: Numbers might not add to totals due to rounding. Percent changes based on numbers prior to rounding.

**Table 2. Value of Monthly U.S.-NAFTA Freight Flows by Mode of Transportation**  
(millions of current dollars)

<b>Mode</b>		<b>August 2015</b>	<b>August 2016</b>	<b>Percent Change August 2015-2016</b>
All Modes	Imports	49,766	49,744	0.0
	Exports	42,676	43,383	1.7
	Total	92,442	93,126	0.7
All Surface Modes	Imports	43,299	43,803	1.2
	Exports	34,790	36,043	3.6
	Total	78,089	79,846	2.2
Truck	Imports	29,684	31,217	5.2
	Exports	29,138	29,627	1.7
	Total	58,822	60,845	3.4
Rail	Imports	9,509	9,002	-5.3
	Exports	4,778	5,241	9.7
	Total	14,286	14,243	-0.3
Pipeline	Imports	4,106	3,584	-12.7
	Exports	874	1,174	34.3
	Total	4,981	4,758	-4.5
Vessel	Imports	3,134	2,821	-10.0
	Exports	2,998	2,547	-15.0
	Total	6,132	5,368	-12.5
Air	Imports	1,408	1,566	11.2
	Exports	1,913	1,917	0.2
	Total	3,321	3,483	4.9

SOURCE: Bureau of Transportation Statistics, [TransBorder Freight Data](#)

NOTES: Numbers might not add to totals due to rounding. Percent changes based on numbers prior to rounding. The value of trade for all modes is not equal to the sum of truck, rail, pipeline, vessel and air modes, it also includes shipments made by mail, foreign trade zones, and other transportation. For additional detail, please refer to the "Data Fields" section of the TransBorder web page:

[http://www.bts.gov/programs/international/TransBorder/TBDR\\_DataFields.html](http://www.bts.gov/programs/international/TransBorder/TBDR_DataFields.html)

**Table 3. Value of Monthly U.S.-Canada Freight Flows by Mode of Transportation**  
(millions of current dollars)

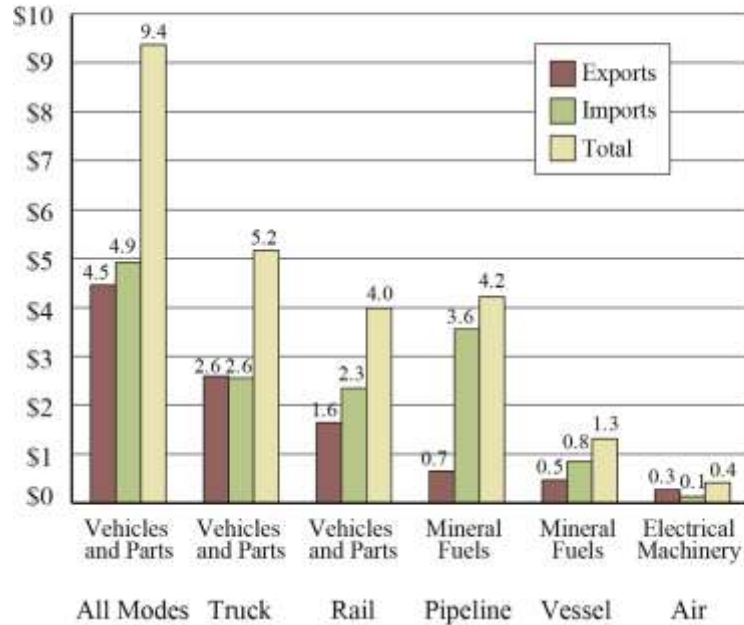
<b>Mode</b>		<b>August 2015</b>	<b>August 2016</b>	<b>Percent Change August 2015-2016</b>
All Modes	Imports	24,886	24,186	-2.8
	Exports	23,065	23,100	0.2
	Total	47,951	47,286	-1.4
All Surface Modes	Imports	21,471	21,284	-0.9
	Exports	18,575	18,939	2.0
	Total	40,046	40,224	0.4
Truck	Imports	12,182	12,769	4.8
	Exports	15,658	15,423	-1.5
	Total	27,840	28,193	1.3
Rail	Imports	5,203	4,945	-5.0
	Exports	2,378	2,844	19.6
	Total	7,581	7,789	2.7
Pipeline	Imports	4,086	3,570	-12.6
	Exports	539	672	24.7
	Total	4,624	4,242	-8.3
Vessel	Imports	1,244	1,099	-11.7
	Exports	1,118	682	-39.0
	Total	2,362	1,781	-24.6
Air	Imports	853	964	13.0
	Exports	1,205	1,256	4.2
	Total	2,058	2,220	7.9

SOURCE: Bureau of Transportation Statistics, [TransBorder Freight Data](#)

NOTES: Numbers might not add to totals due to rounding. Percent changes based on numbers prior to rounding. The value of trade for all modes is not equal to the sum of truck, rail, pipeline, vessel and air modes, it also includes shipments made by mail, foreign trade zones, and other transportation. For additional detail, please refer to the "Data Fields" section of the TransBorder web page:

[http://www.bts.gov/programs/international/TransBorder/TBDR\\_DataFields.html](http://www.bts.gov/programs/international/TransBorder/TBDR_DataFields.html)

**Figure 5. Top Commodity Transported between the U.S. and Canada for Each Mode of Transportation, August 2016 (billions of current dollars)**



SOURCE: Bureau of Transportation Statistics, [TransBorder Freight Data](#)

NOTES: Import and export numbers might not add to totals due to rounding.



**Table 4. Value of Monthly U.S.-Mexico Freight Flows by Mode of Transportation**  
(millions of current dollars)

<b>Mode</b>		<b>August 2015</b>	<b>August 2016</b>	<b>Percent Change August 2015-2016</b>
All Modes	Imports	24,880	25,557	2.7
	Exports	19,612	20,283	3.4
	Total	44,492	45,840	3.0
All Surface Modes	Imports	21,828	22,519	3.2
	Exports	16,215	17,103	5.5
	Total	38,043	39,622	4.2
Truck	Imports	17,502	18,448	5.4
	Exports	13,480	14,204	5.4
	Total	30,982	32,652	5.4
Rail	Imports	4,306	4,057	-5.8
	Exports	2,400	2,397	-0.1
	Total	6,705	6,453	-3.8
Pipeline	Imports	21	14	-31.5
	Exports	336	503	49.8
	Total	356	517	45.1
Vessel	Imports	1,890	1,722	-8.9
	Exports	1,880	1,865	-0.8
	Total	3,770	3,587	-4.9
Air	Imports	554	601	8.5
	Exports	708	662	-6.6
	Total	1,262	1,263	0.1

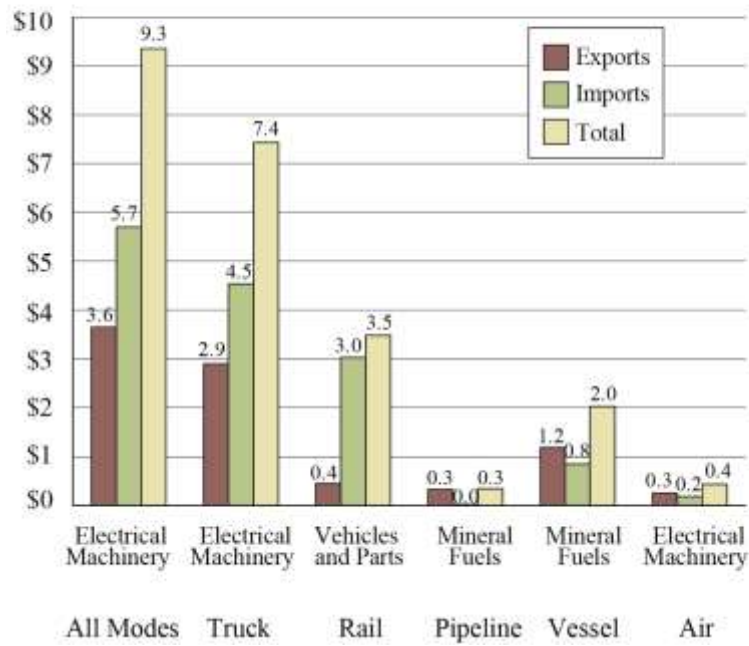
SOURCE: Bureau of Transportation Statistics, [TransBorder Freight Data](#)

NOTES: Numbers might not add to totals due to rounding. Percent changes based on numbers prior to rounding.

The value of trade for all modes is not equal to the sum of truck, rail, pipeline, vessel and air modes, it also includes shipments made by mail, foreign trade zones, and other transportation. For additional detail, please refer to the "Data Fields" section of the TransBorder web page:

[http://www.bts.gov/programs/international/TransBorder/TBDR\\_DataFields.html](http://www.bts.gov/programs/international/TransBorder/TBDR_DataFields.html)

**Figure 6. Top Commodity Transported between the U.S. and Mexico for Each Mode of Transportation, August 2016  
(billions of current dollars)**



SOURCE: Bureau of Transportation Statistics, [TransBorder Freight Data](#)

NOTES: Import and export numbers might not add to totals due to rounding.