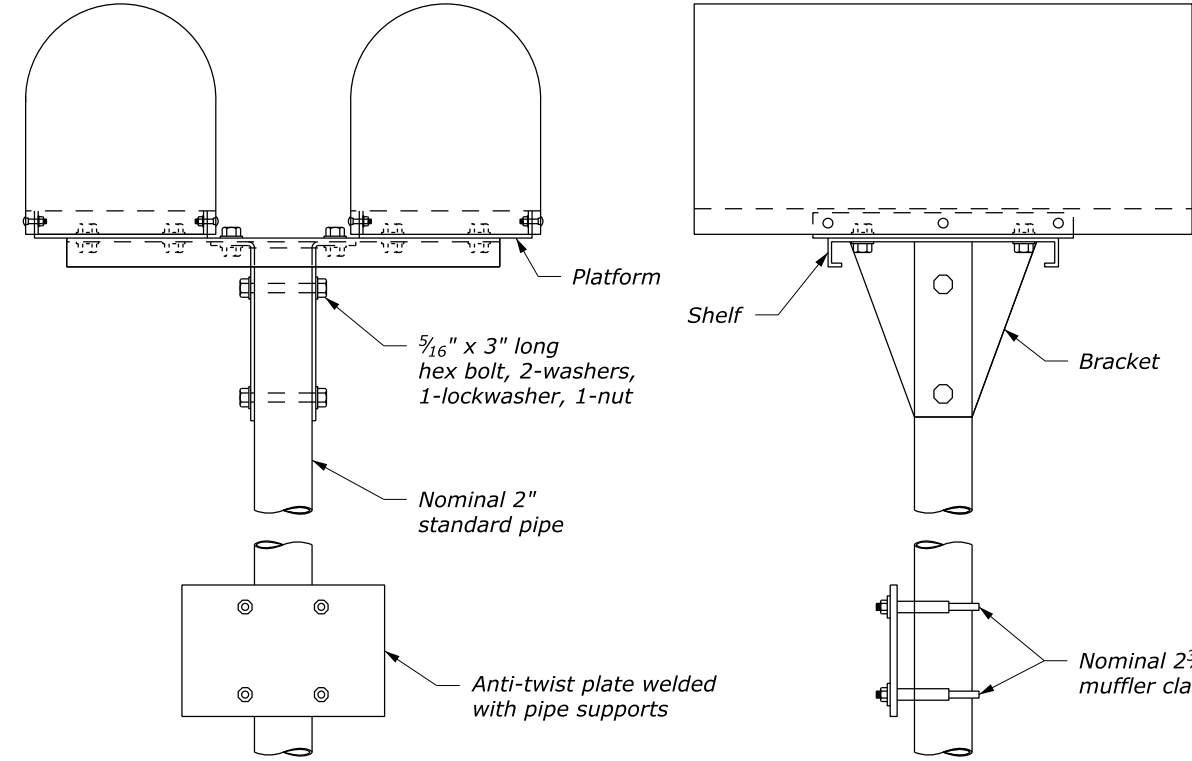
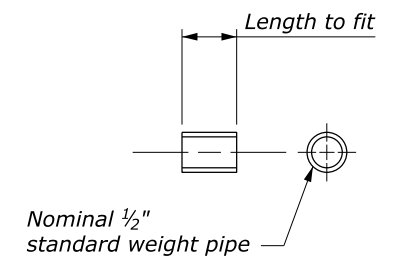


**SINGLE MAILBOX INSTALLATION**

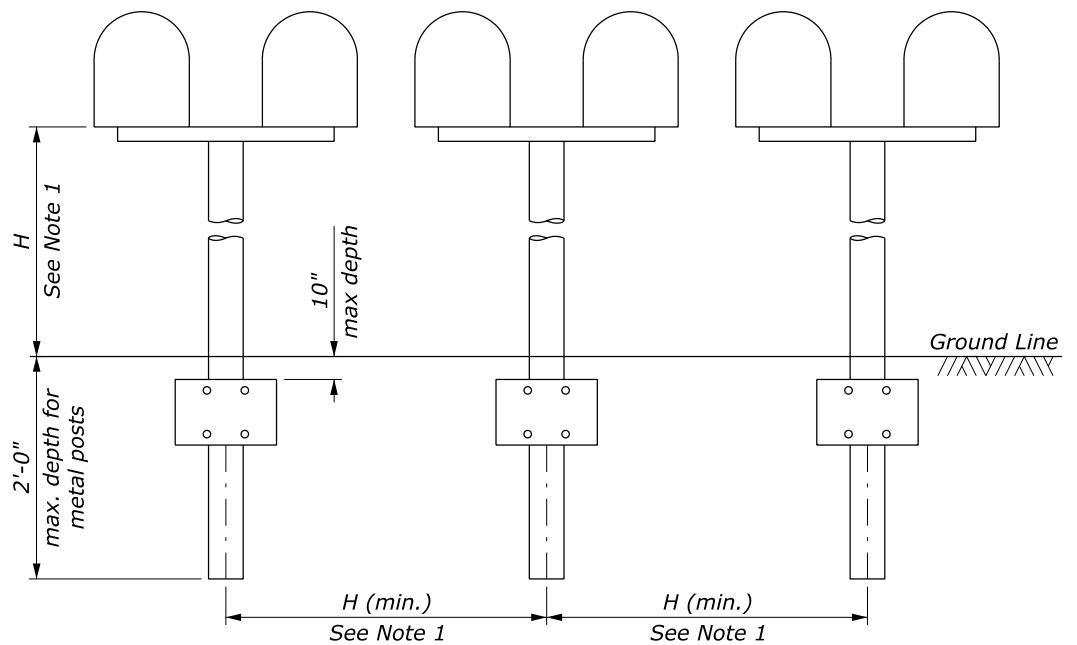


**DOUBLE MAILBOX INSTALLATION**

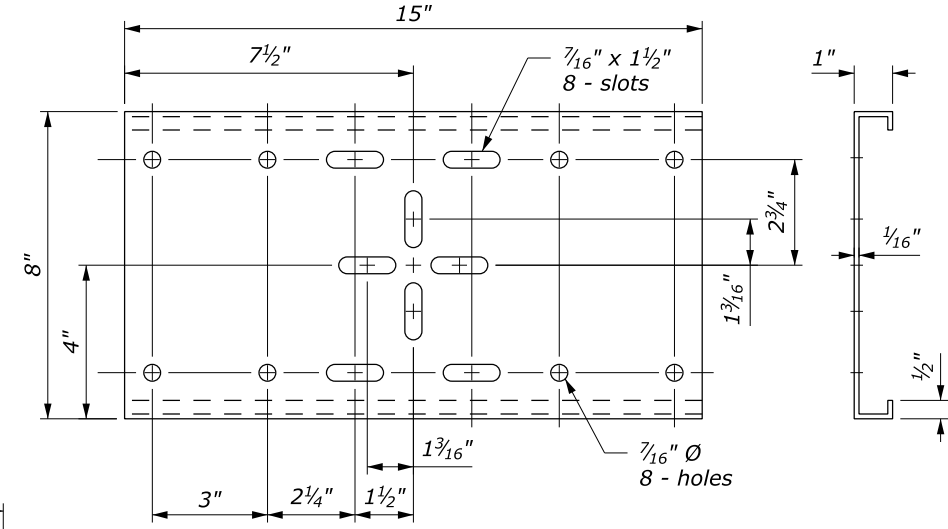
**NOTE:**  
 1. Spacing between multiple mailboxes and height of mailbox above ground level are as established by the the U.S. Postal Service. H is usually 3'-4" to 4'-0".



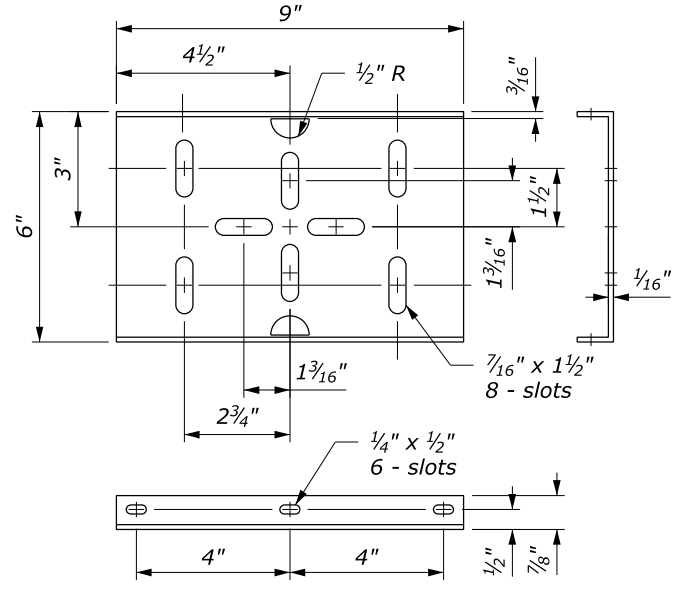
**SPACER**



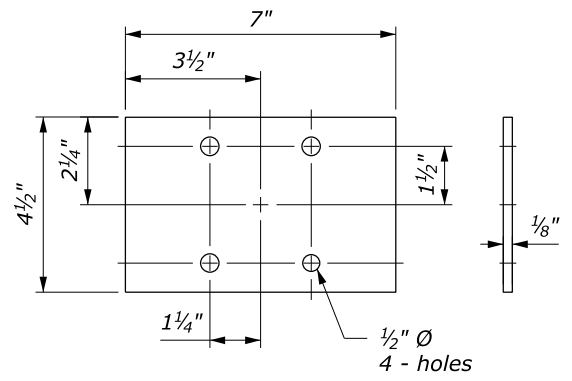
**SPACING FOR MULTIPLE INSTALLATION**



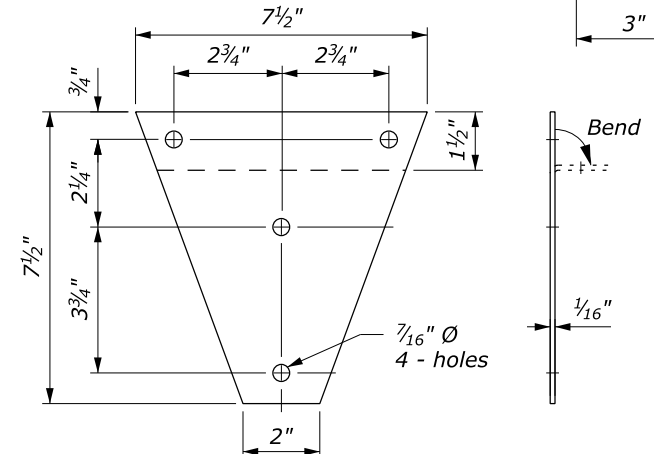
**SHELF**



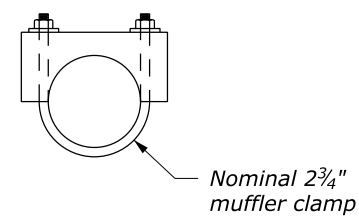
**PLATFORM**



**ANTI-TWIST PLATE**



**BRACKET**



**CLAMP**

NO SCALE

U.S. DEPARTMENT OF TRANSPORTATION FEDERAL HIGHWAY ADMINISTRATION WESTERN FEDERAL LANDS HIGHWAY DIVISION	
U.S. CUSTOMARY DETAIL	
<b>MAILBOX ASSEMBLY SERIES A</b>	
DETAIL APPROVED FOR USE --/----	DETAIL W646-2
REVISED: DRAFT: 11/2014	