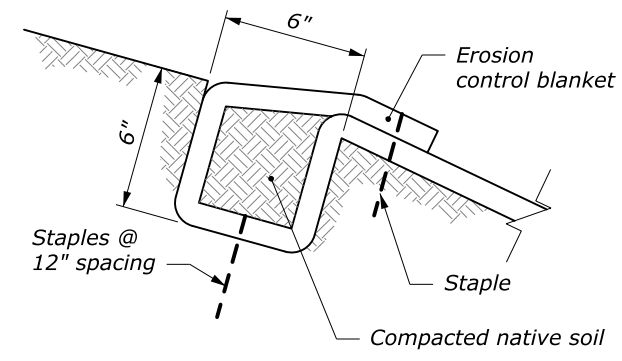


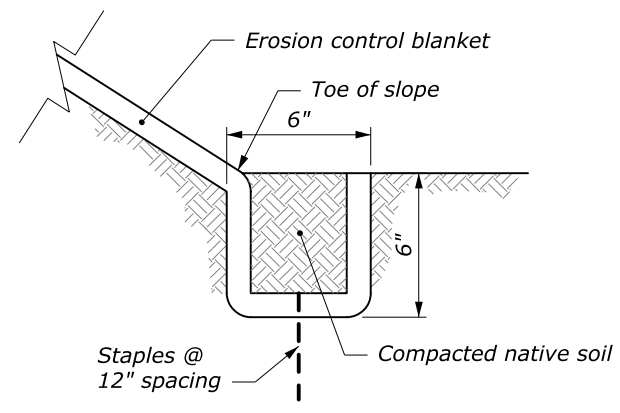
STATE	PROJECT	SHEET NUMBER

**NOTE:**

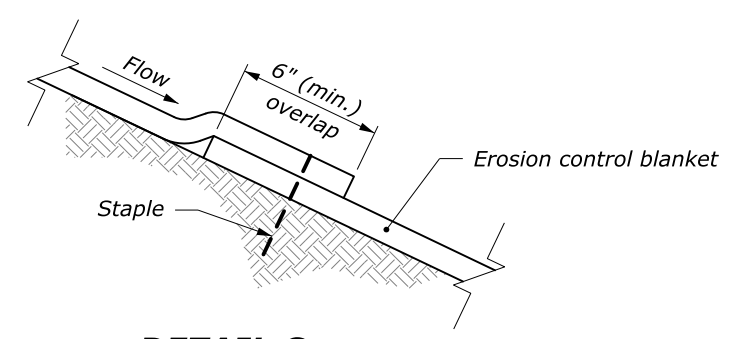
1. Install staples according to the manufacturer's recommendations.
2. Overlap in the direction of the prevailing wind.



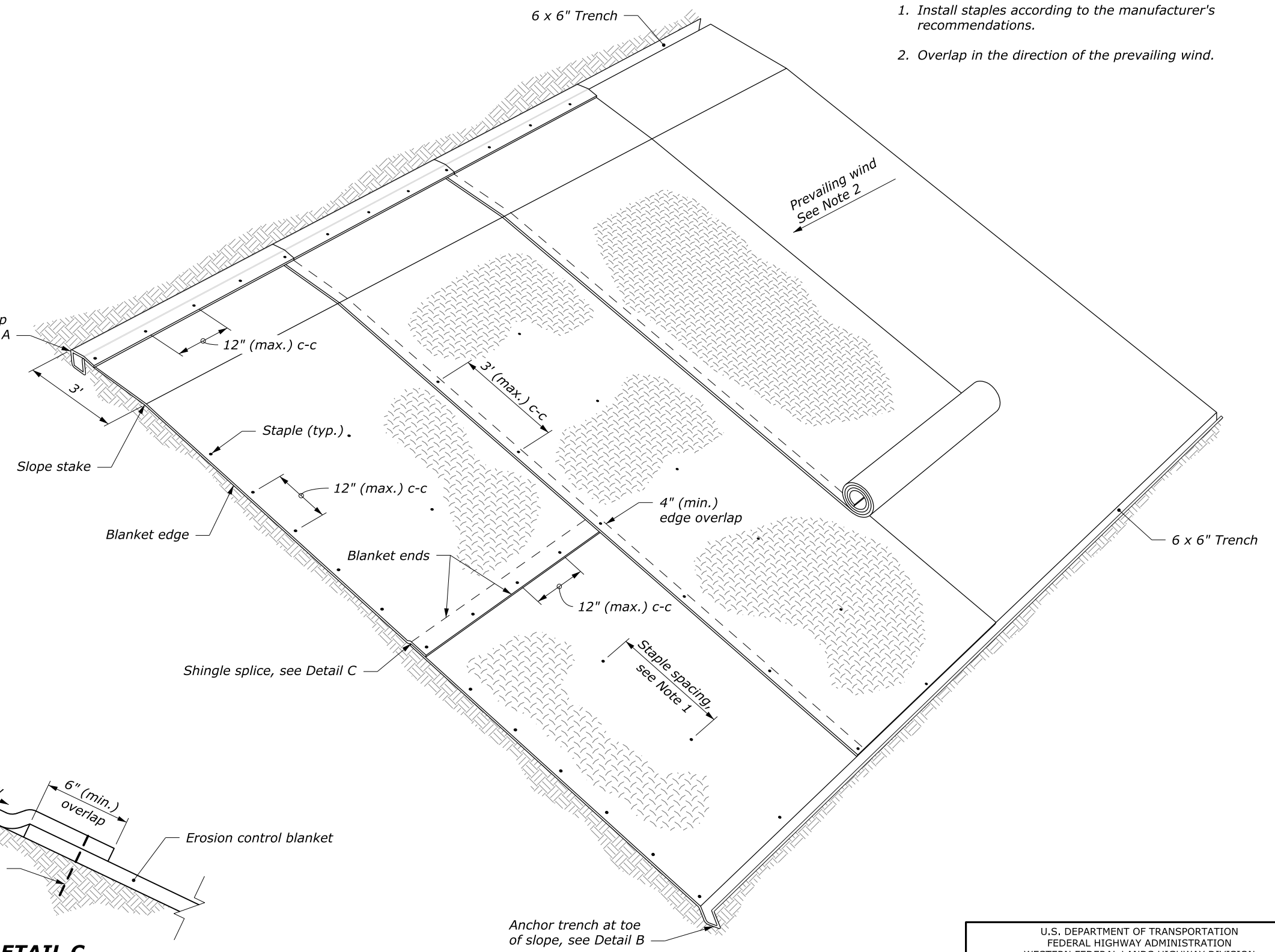
**DETAIL A  
ANCHOR TRENCH  
AT TOP OF SLOPE**



**DETAIL B  
ANCHOR TRENCH  
AT TOE OF SLOPE**



**DETAIL C  
SHINGLE SPLICE**

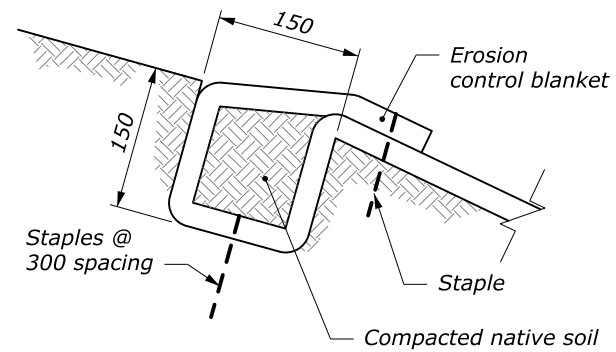


**PERSPECTIVE VIEW**

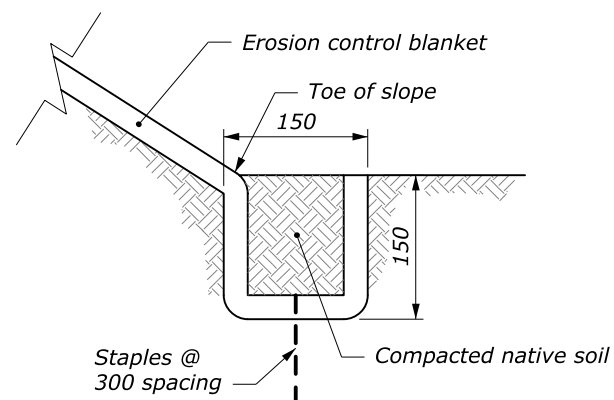
NO SCALE

U.S. DEPARTMENT OF TRANSPORTATION FEDERAL HIGHWAY ADMINISTRATION WESTERN FEDERAL LANDS HIGHWAY DIVISION	
U.S. CUSTOMARY DETAIL	
<b>ROLLED EROSION CONTROL PRODUCT ON SLOPES</b>	
DETAIL APPROVED FOR USE --/----	DETAIL
REVISED: 10/2016	W629-1

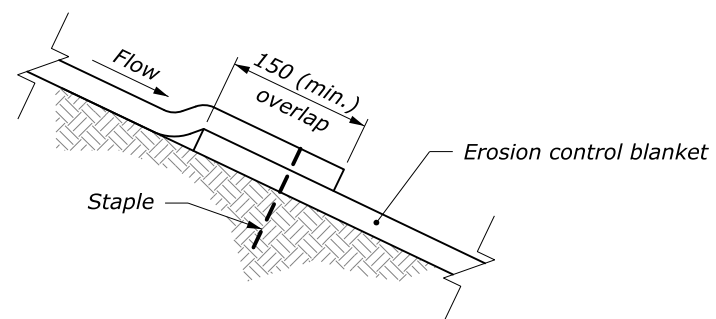
c:\myfiles\pw\_production\0266575\W629-1A.dgn [USC]  
1 July 2016 9:41 AM



**DETAIL A  
ANCHOR TRENCH  
AT TOP OF SLOPE**



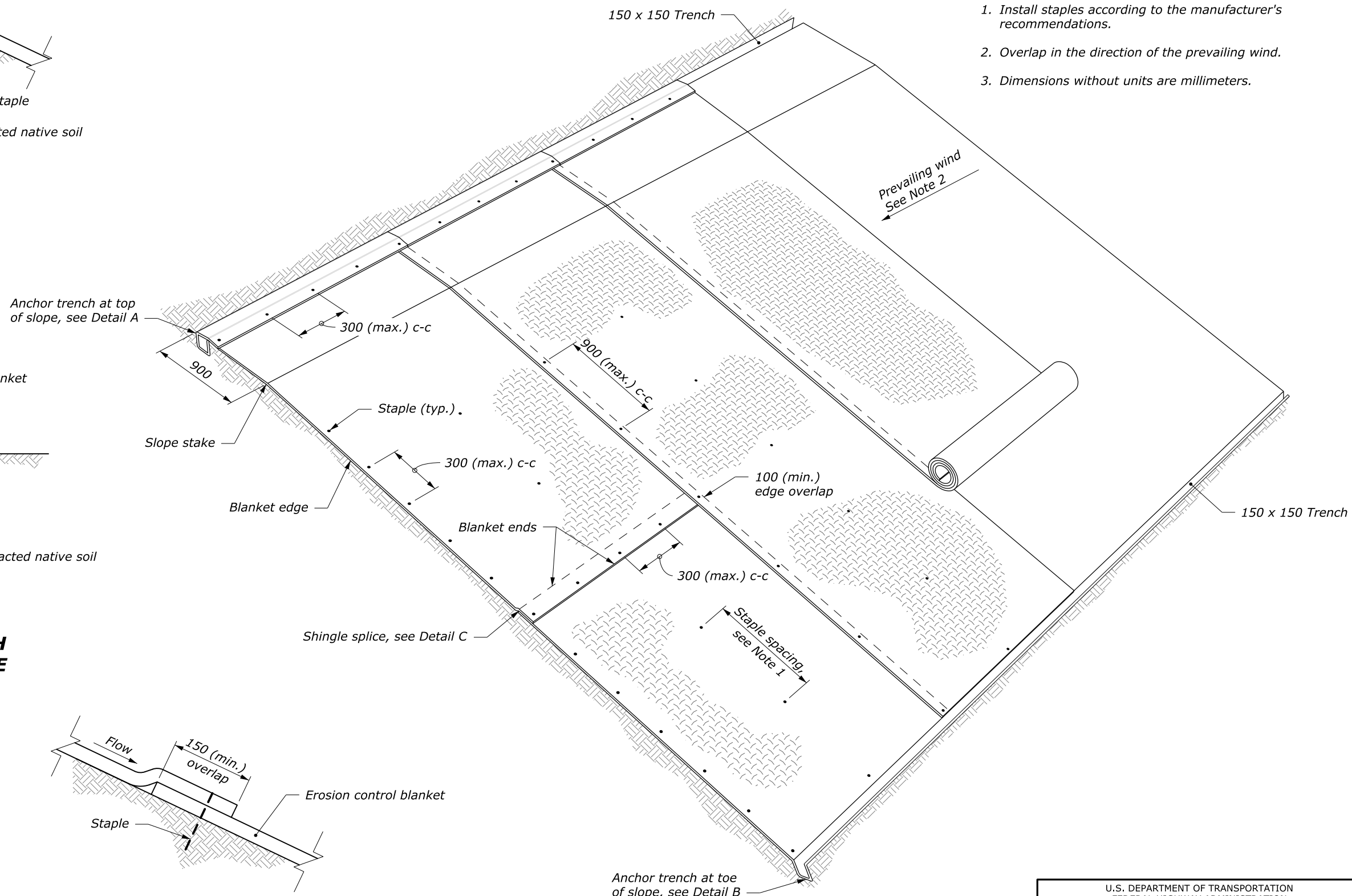
**DETAIL B  
ANCHOR TRENCH  
AT TOE OF SLOPE**



**DETAIL C  
SHINGLE SPLICE**

**NOTE:**

1. Install staples according to the manufacturer's recommendations.
2. Overlap in the direction of the prevailing wind. See Note 2.
3. Dimensions without units are millimeters.



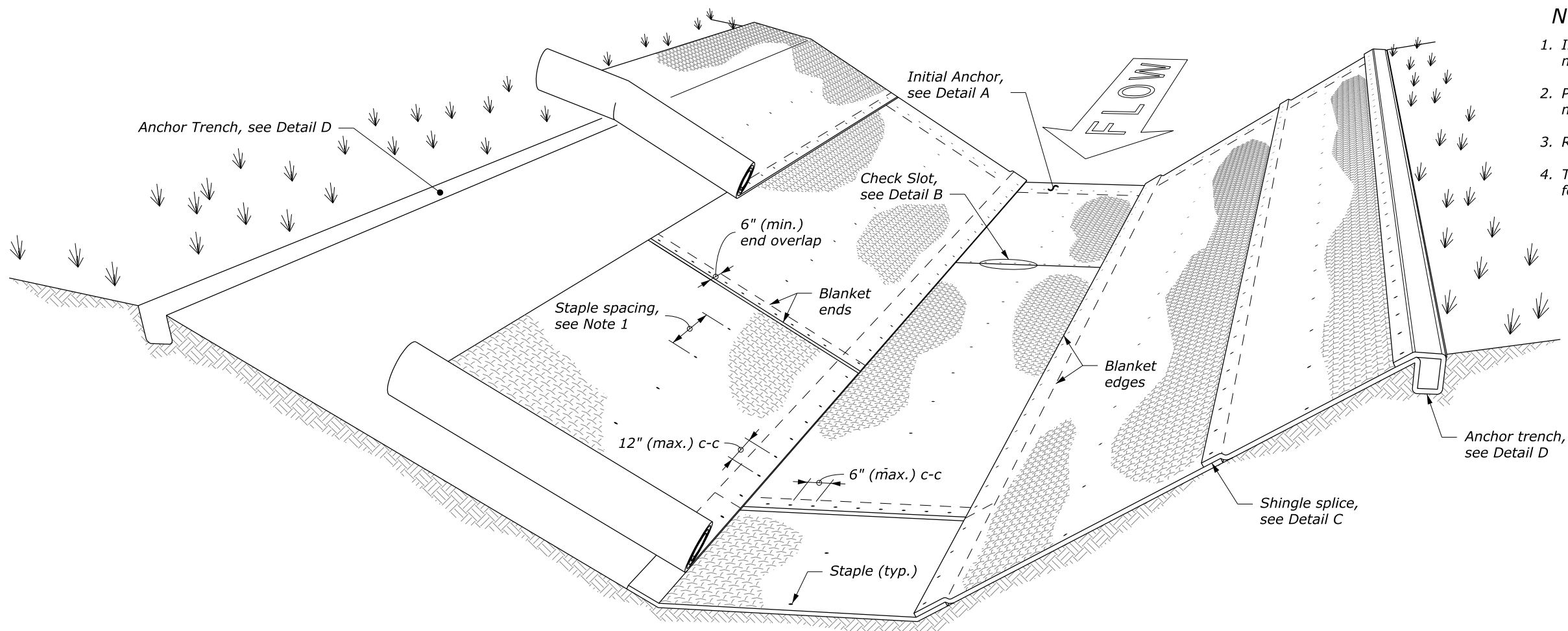
**PERSPECTIVE VIEW**

NO SCALE

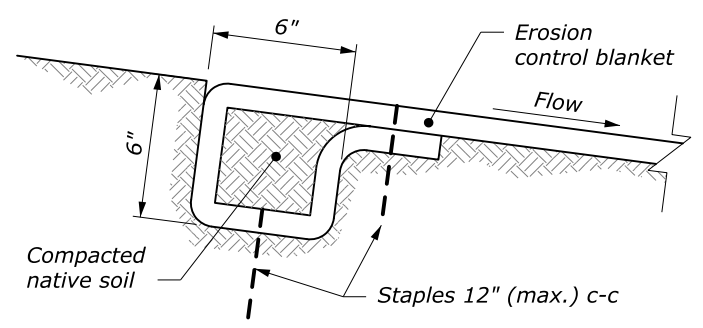
U.S. DEPARTMENT OF TRANSPORTATION FEDERAL HIGHWAY ADMINISTRATION WESTERN FEDERAL LANDS HIGHWAY DIVISION	
METRIC DETAIL	
<b>ROLLED EROSION CONTROL PRODUCT ON SLOPES</b>	
DETAIL APPROVED FOR USE --/----	DETAIL
REVISED: 10/2016	MW629-1

**NOTE:**

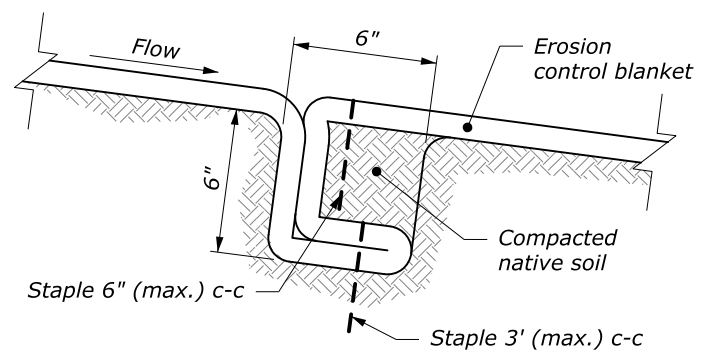
1. Install staples according to the manufacturer's recommendations.
2. Provide check slots according to the manufacturer's recommendations.
3. Roll ends may be spliced in a check slot.
4. Trapezoidal ditch shown. Similar details for a V-ditch.



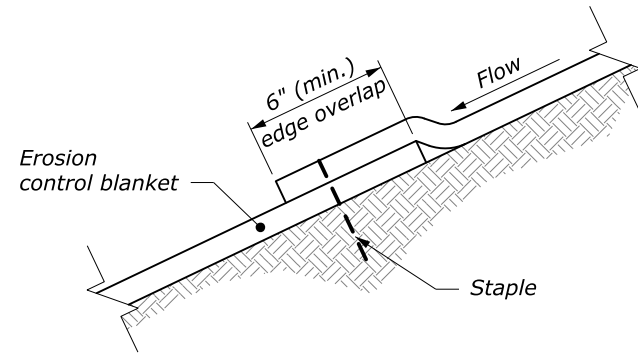
**PERSPECTIVE VIEW**



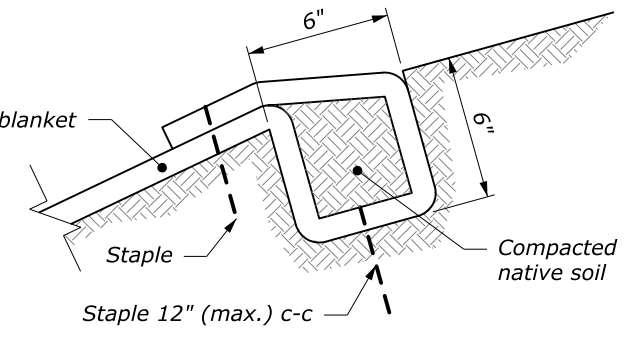
**DETAIL A  
INITIAL ANCHOR**



**DETAIL B  
CHECK SLOT**  
See Note 2



**DETAIL C  
SHINGLE SPLICE**



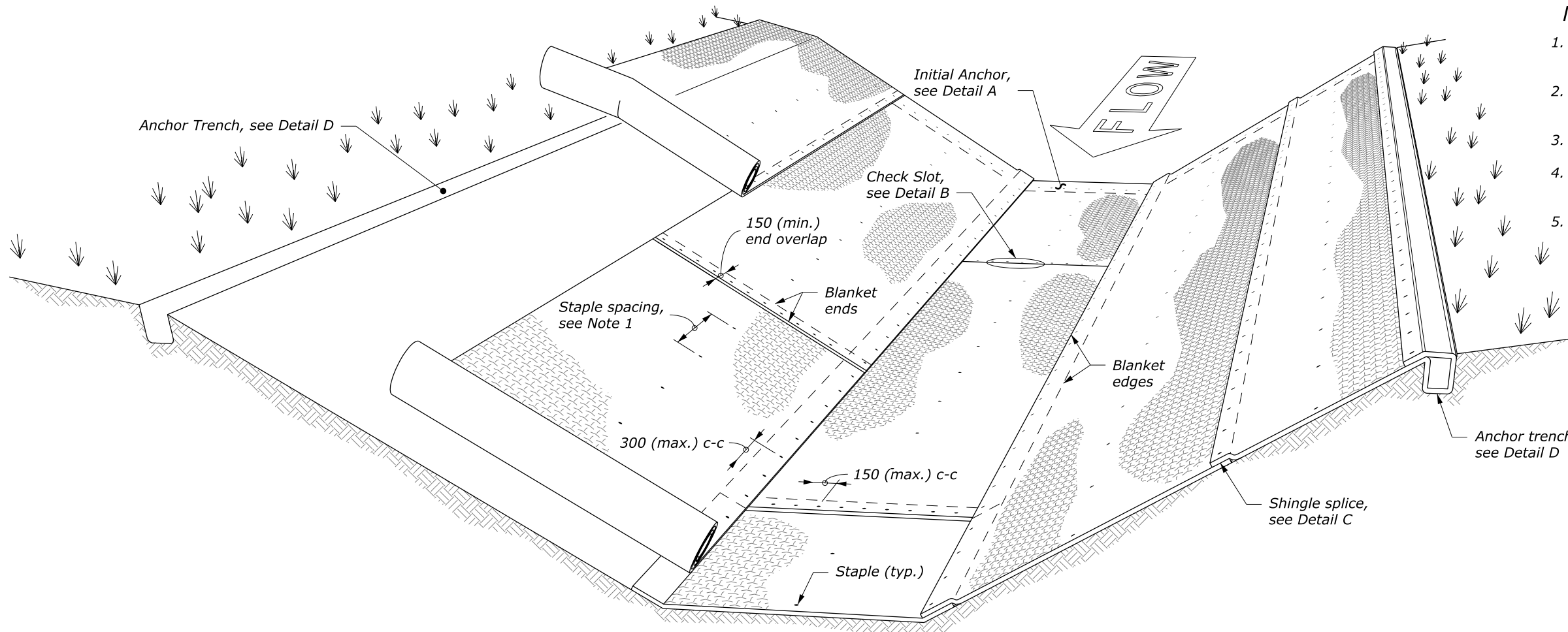
**DETAIL D  
ANCHOR TRENCH**

NO SCALE

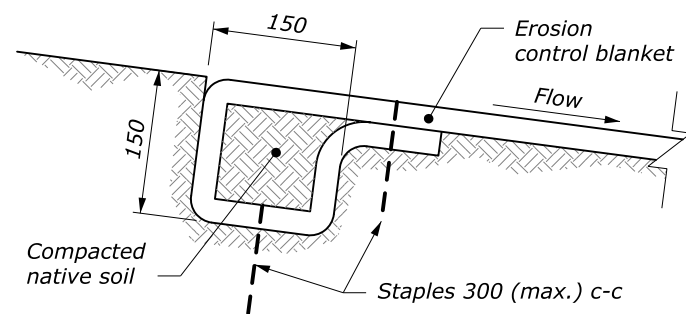
U.S. DEPARTMENT OF TRANSPORTATION FEDERAL HIGHWAY ADMINISTRATION WESTERN FEDERAL LANDS HIGHWAY DIVISION	
U.S. CUSTOMARY DETAIL	
<b>ROLLED EROSION CONTROL PRODUCT IN CHANNELS</b>	
DETAIL APPROVED FOR USE --/----	DETAIL
REVISED: 10/2016	W629-2

**NOTE:**

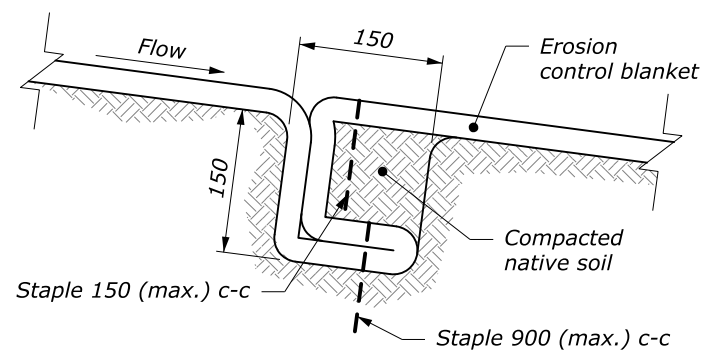
1. Install staples according to the manufacturer's recommendations.
2. Provide check slots according to the manufacturer's recommendations.
3. Roll ends may be spliced in a check slot.
4. Trapezoidal ditch shown. Similar details for a V-ditch.
5. Dimensions without units are millimeters.



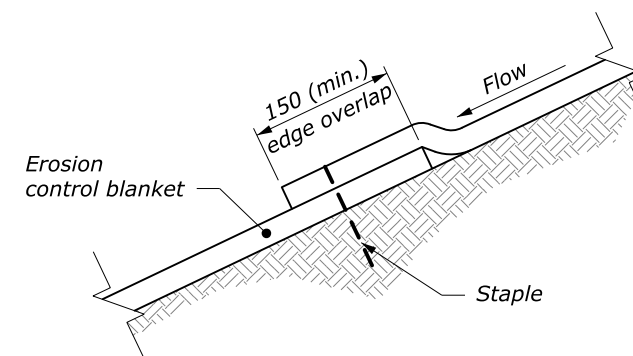
**PERSPECTIVE VIEW**



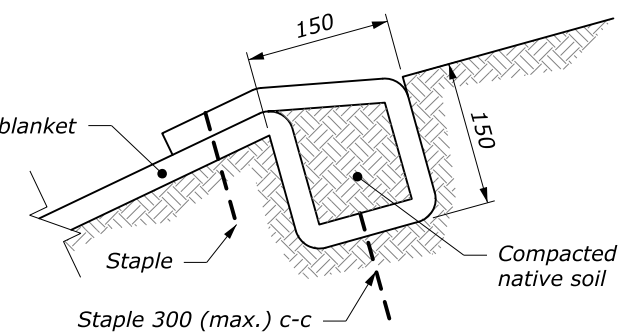
**DETAIL A  
INITIAL ANCHOR**



**DETAIL B  
CHECK SLOT**  
See Note 2



**DETAIL C  
SHINGLE SPLICE**



**DETAIL D  
ANCHOR TRENCH**

U.S. DEPARTMENT OF TRANSPORTATION FEDERAL HIGHWAY ADMINISTRATION WESTERN FEDERAL LANDS HIGHWAY DIVISION	
METRIC DETAIL	
<b>ROLLED EROSION CONTROL PRODUCT IN CHANNELS</b>	
DETAIL APPROVED FOR USE --/-----	DETAIL
REVISED: 10/2016	MW629-2

NO SCALE