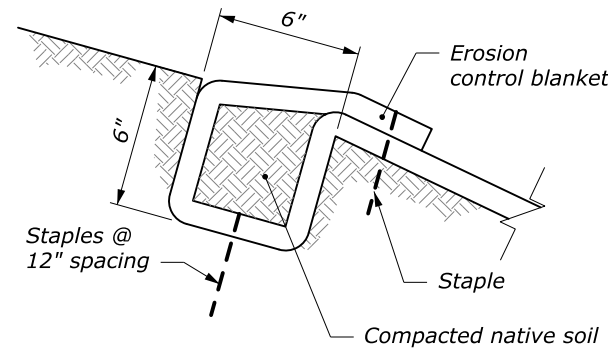
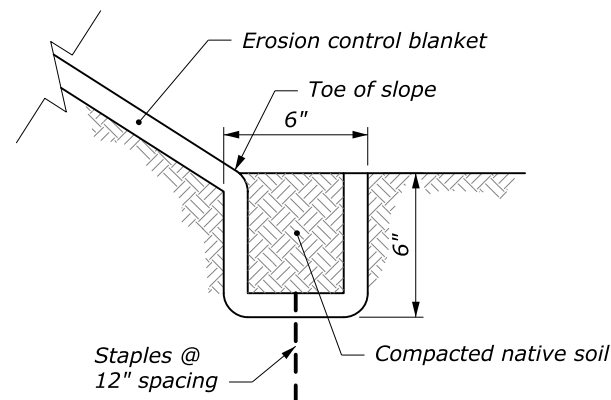


NOTE:

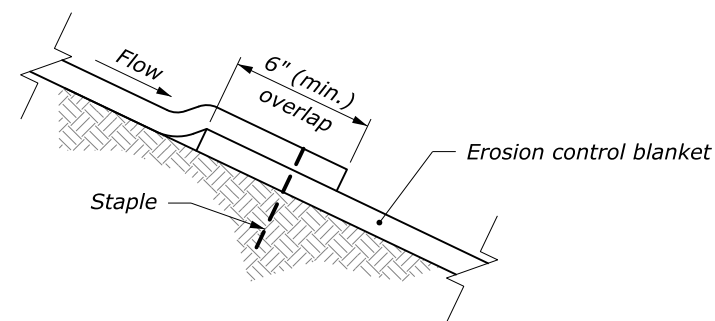
1. Install staples according to the manufacturer's recommendations.
2. Overlap in the direction of the prevailing wind.



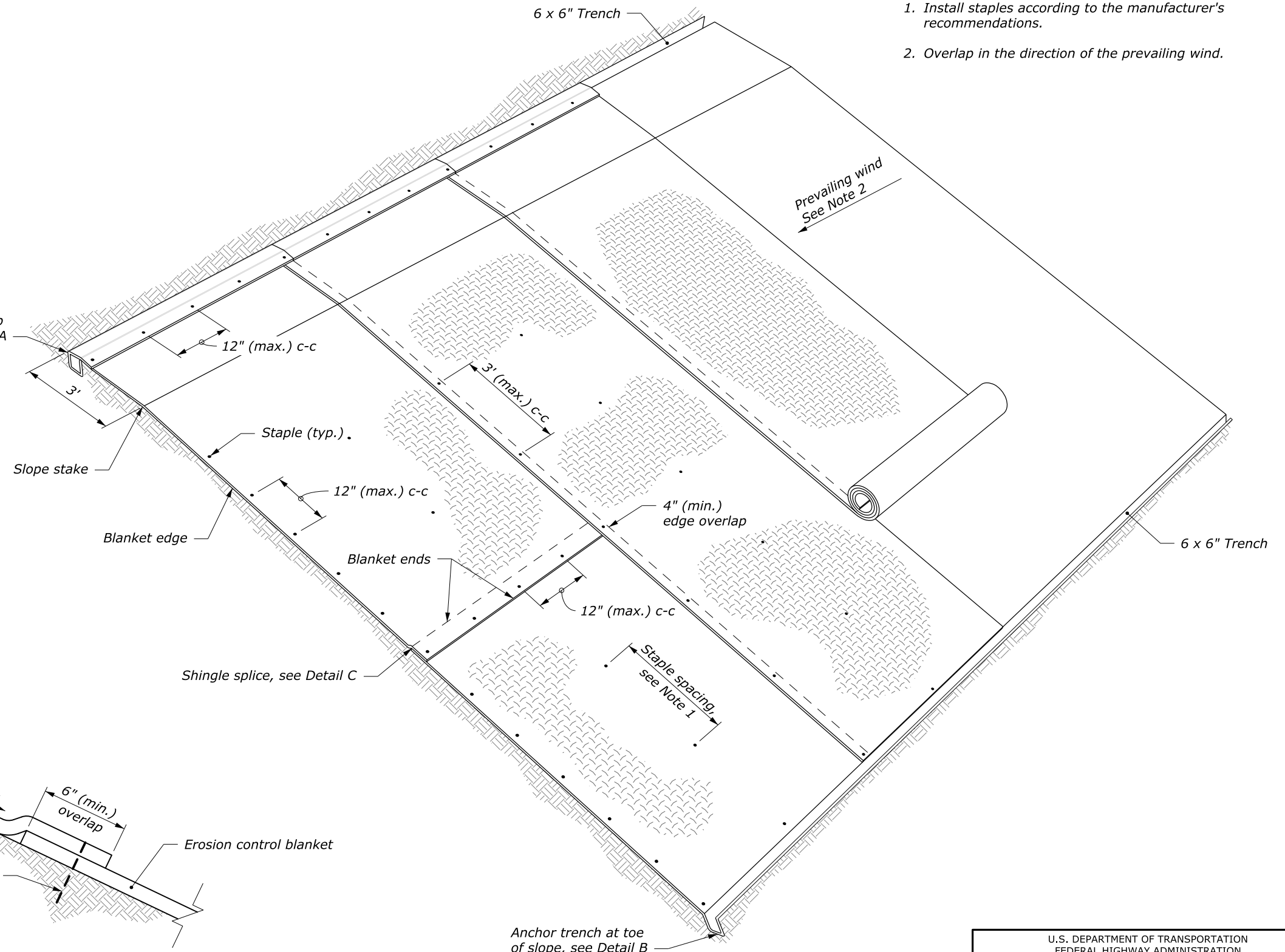
**DETAIL A
ANCHOR TRENCH
AT TOP OF SLOPE**



**DETAIL B
ANCHOR TRENCH
AT TOE OF SLOPE**



**DETAIL C
SHINGLE SPLICE**



PERSPECTIVE VIEW

NO SCALE

U.S. DEPARTMENT OF TRANSPORTATION FEDERAL HIGHWAY ADMINISTRATION WESTERN FEDERAL LANDS HIGHWAY DIVISION	
U.S. CUSTOMARY DETAIL	
ROLLED EROSION CONTROL PRODUCT ON SLOPES	
DETAIL APPROVED FOR USE --/----	DETAIL
REVISED: 10/2016	W629-1