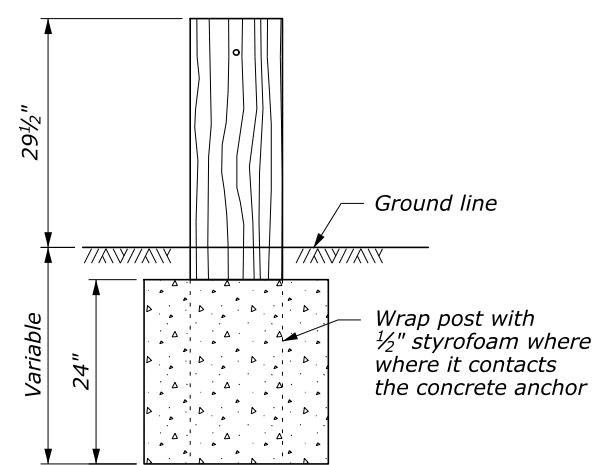
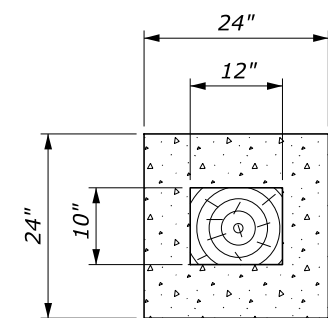
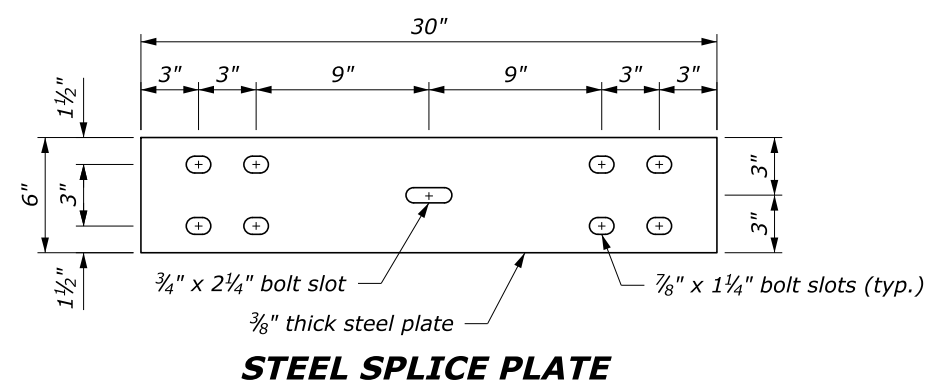
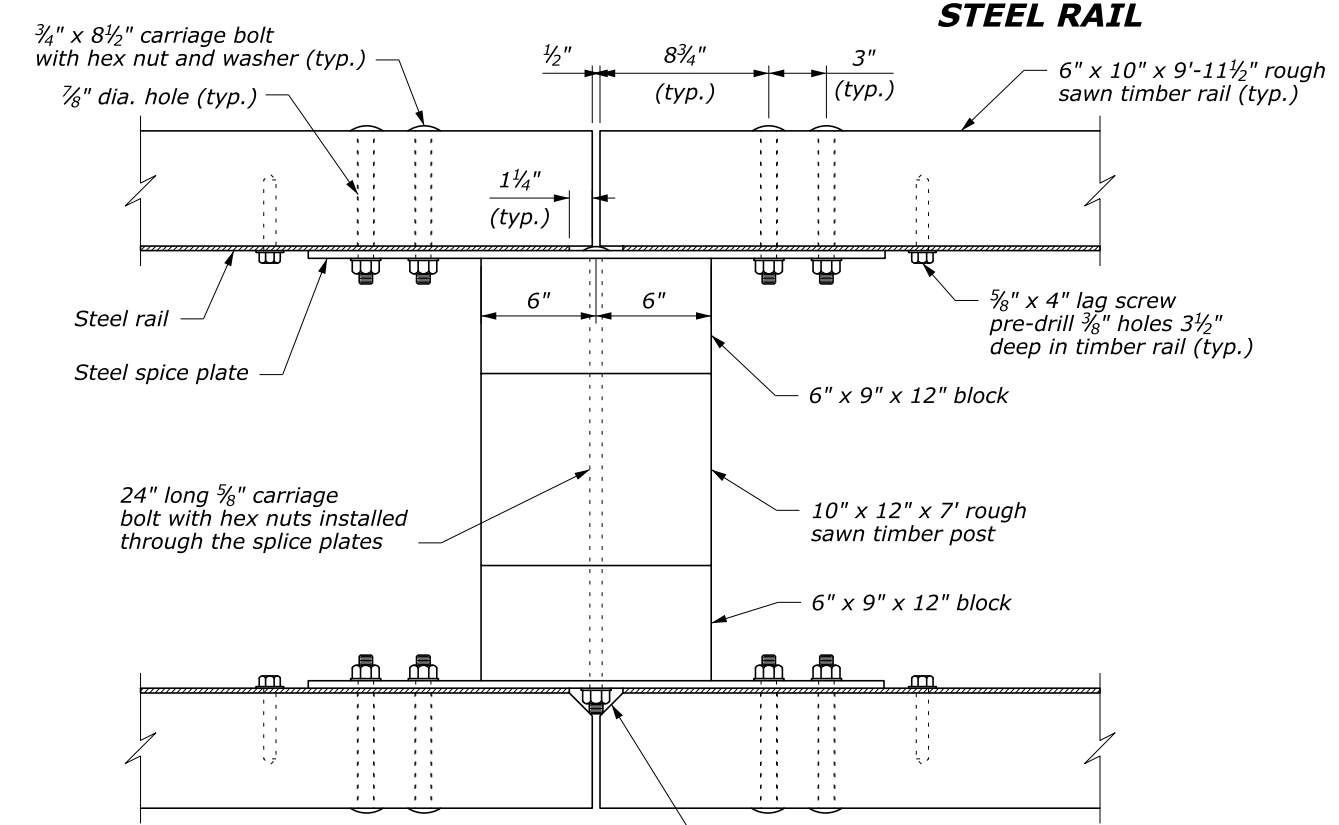
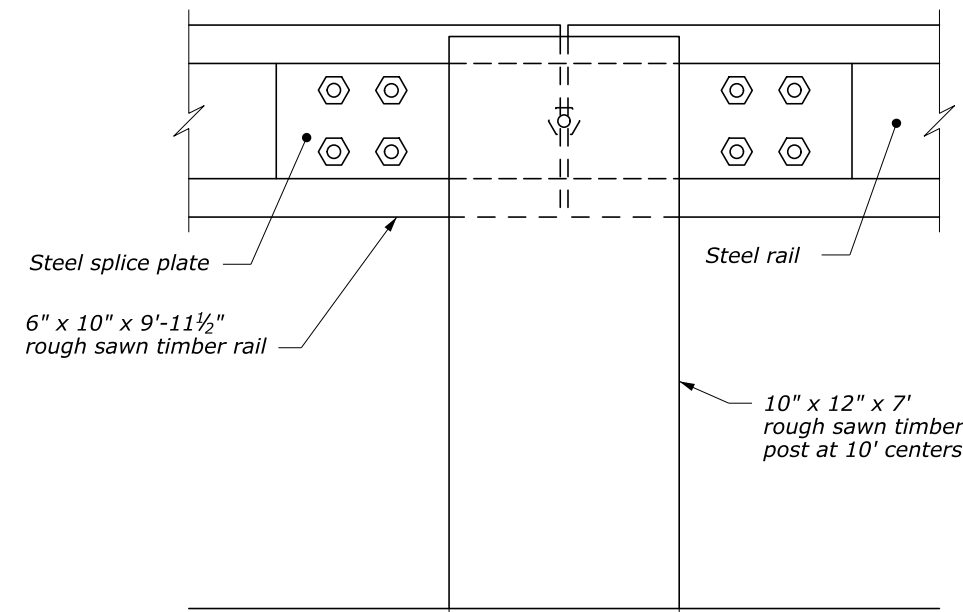


NOTE:

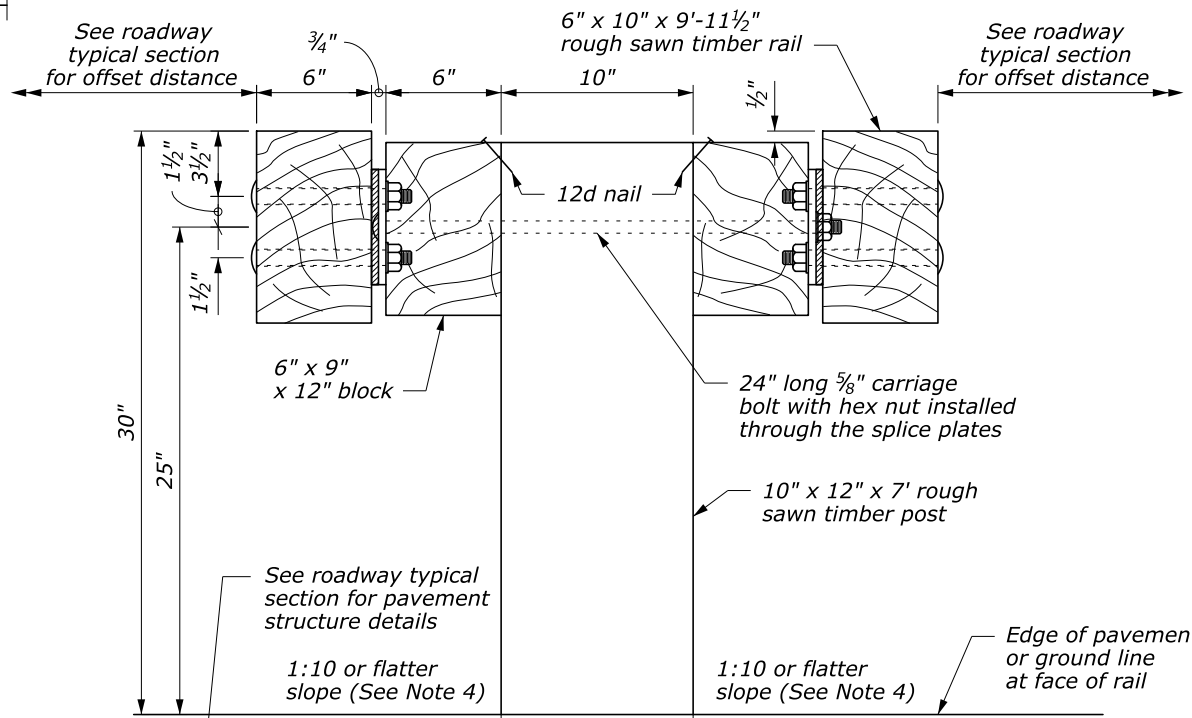
1. Use weathering steel for all structural steel and fastener hardware as specified.
2. Place terminal section on both approach and trailing ends of barrier installations. See ET Detail 617-61 and Standard 617-62.
3. Use no more than 3 short guardrail posts in a row. A 25" diameter round anchor may be used instead of the square anchor shown. A reduced size is acceptable in solid rock.
4. In areas where the rail face is offset a minimum of 20 feet from the edge of travel lane, a maximum approach shoulder slope of 1V:6H may be used.



POST CONNECTION PLAN



POST CONNECTION BACK ELEVATION



TYPICAL GUARDRAIL CROSS SECTION

CONCRETE ANCHOR FOR SHORT GUARDRAIL POST
See Note 3

NO SCALE

U.S. DEPARTMENT OF TRANSPORTATION FEDERAL HIGHWAY ADMINISTRATION EASTERN FEDERAL LANDS HIGHWAY DIVISION	
U.S. CUSTOMARY DETAIL STEEL-BACKED TIMBER GUARDRAIL MEDIAN, TYPE A	
REVISD: 3/2010 5/2016	DETAIL ET 617-70

02-May-2016 09:08 AM I:\Standards_and_Details\ET_Detail\Drawings\FP-A\Updates ET Details 4-2016\Completed\61770_EFL_TEMP.dgn