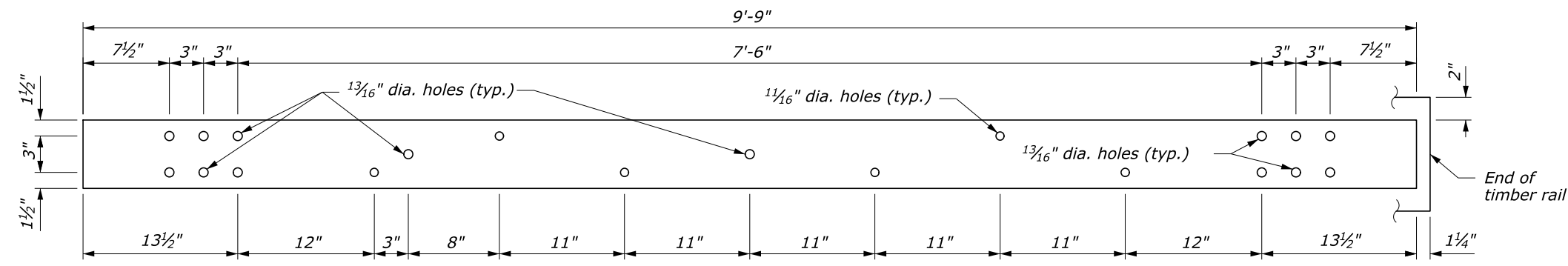
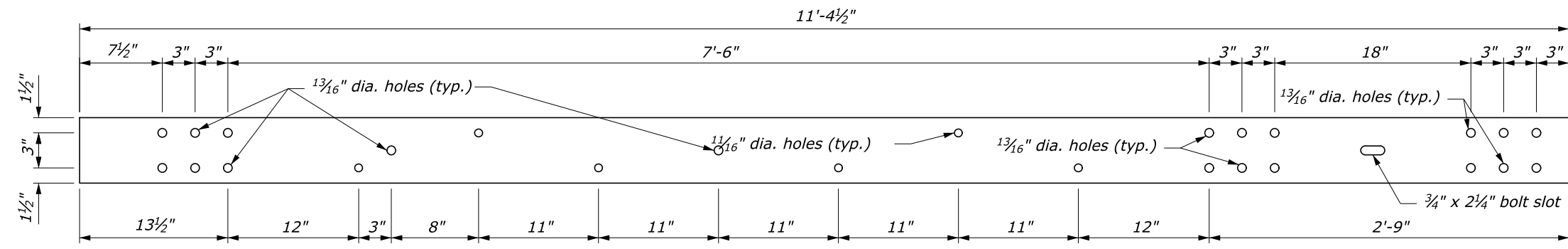


TERMINAL SECTION RAIL
6" x 3/8" x 9'-9"

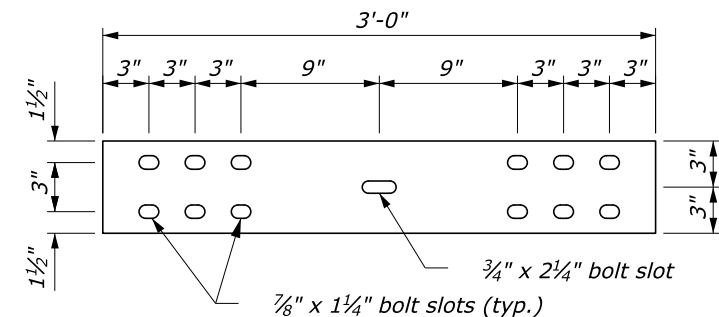


TRANSITION RAIL
6" x 3/8" x 9'-9"

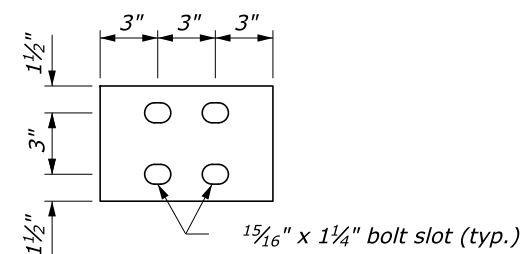


TRANSITION SPLICE RAIL
6" x 3/8" x 11'-4 1/2"

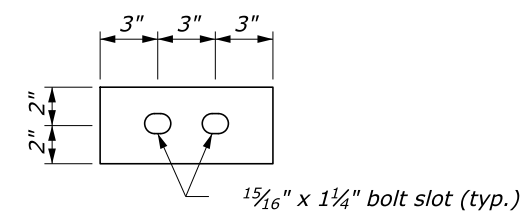
NOTE:
1. Pre-drill 5/8-inch holes in timber rail and 3/8-inch holes in the wood spacer block for the 5/8-inch lag screws.



SPLICE PLATE
6" x 3/8" x 3'-0"

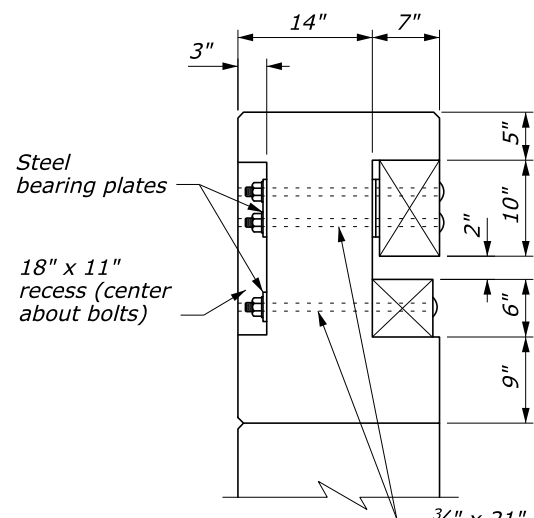


6" x 3/8" x 9"

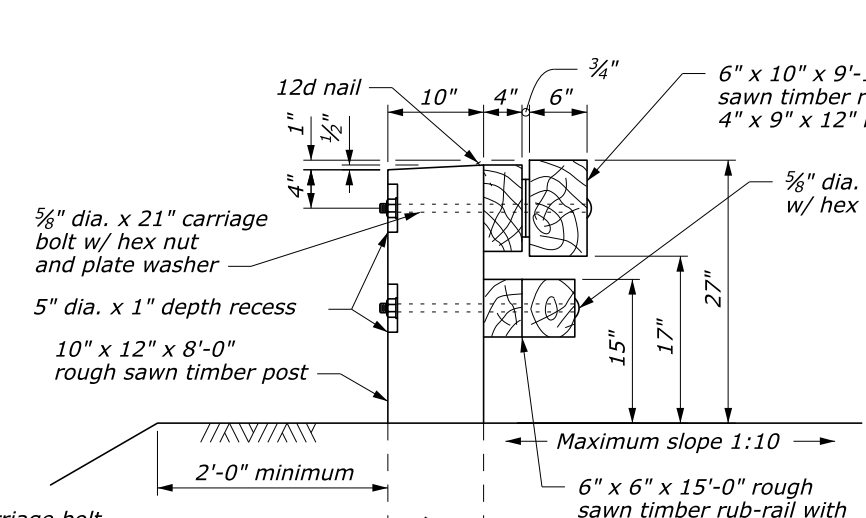


4" x 3/8" x 9"

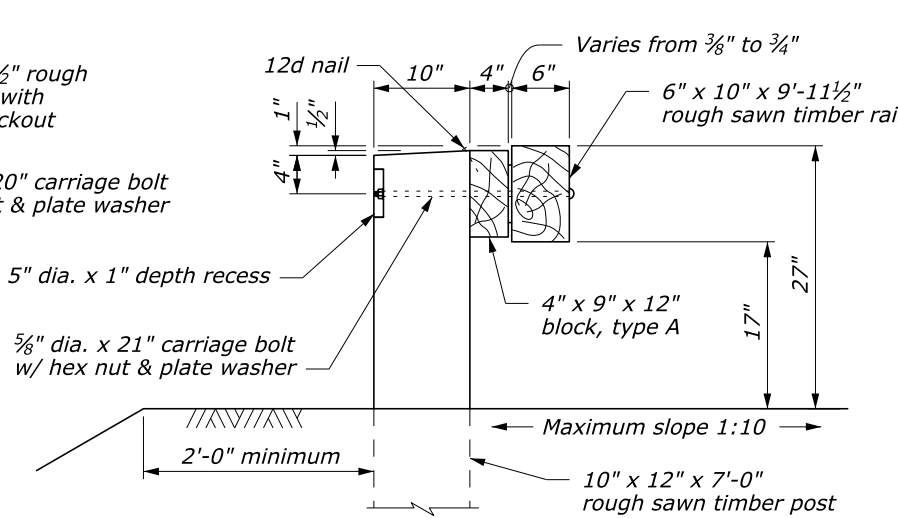
BEARING PLATE DETAILS



SECTION A-A



SECTION B-B



SECTION C-C

NO SCALE

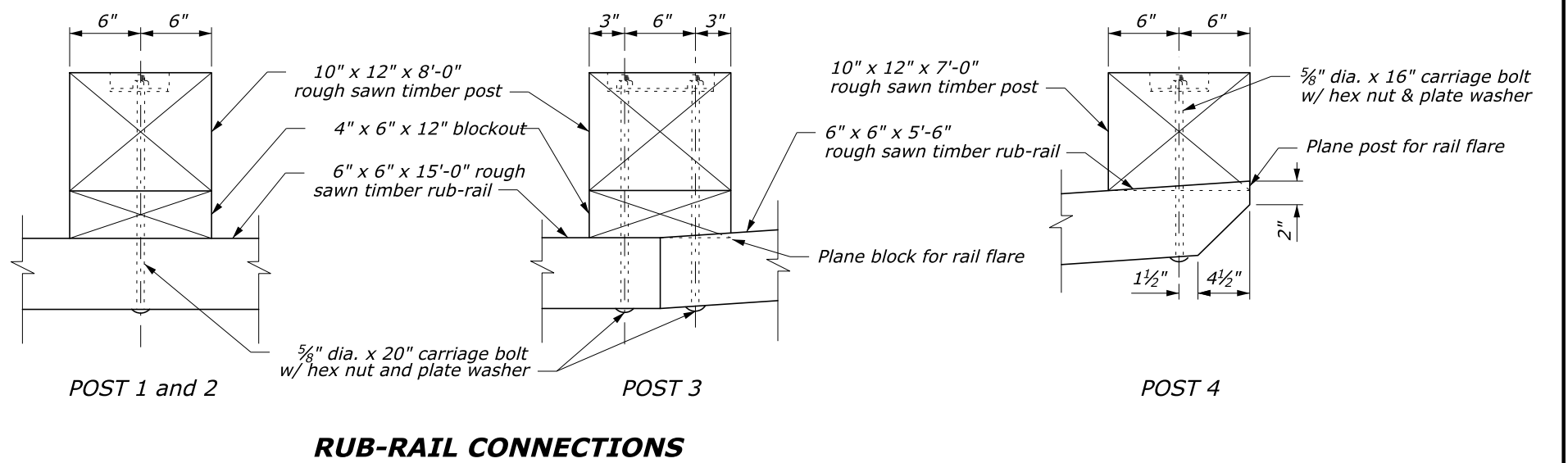
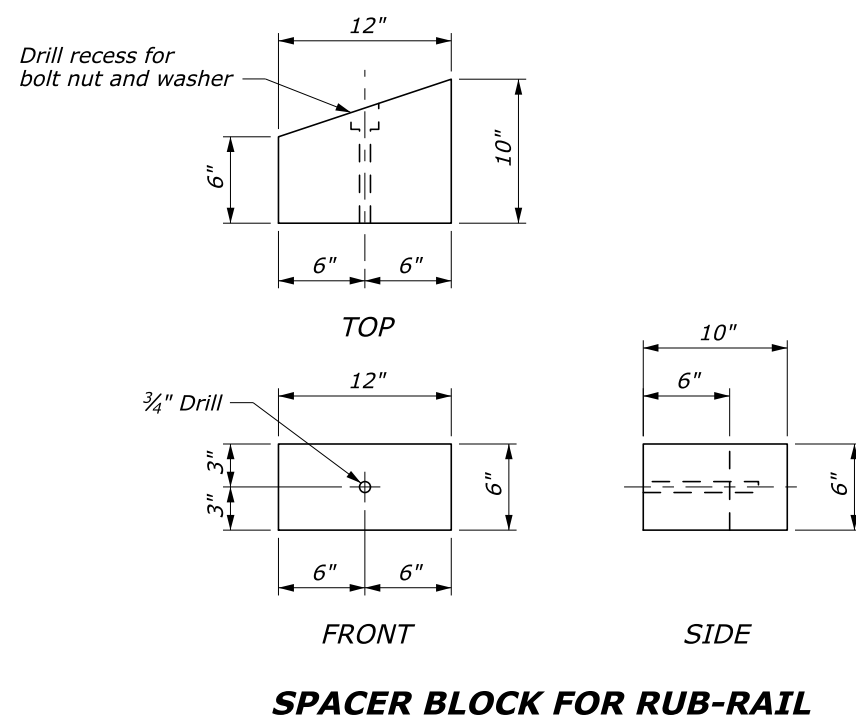
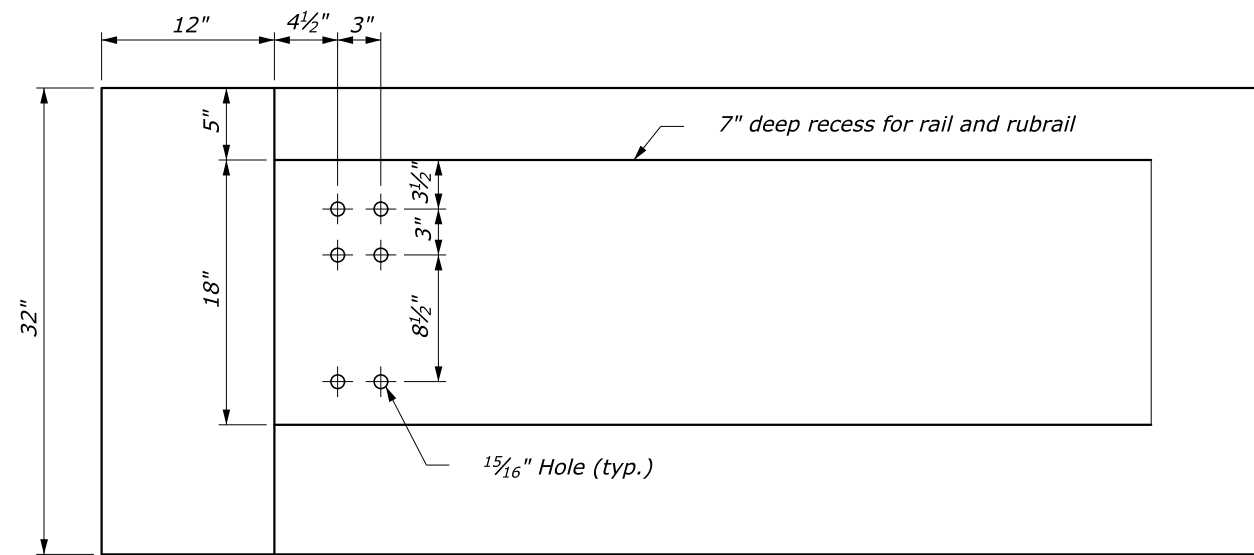
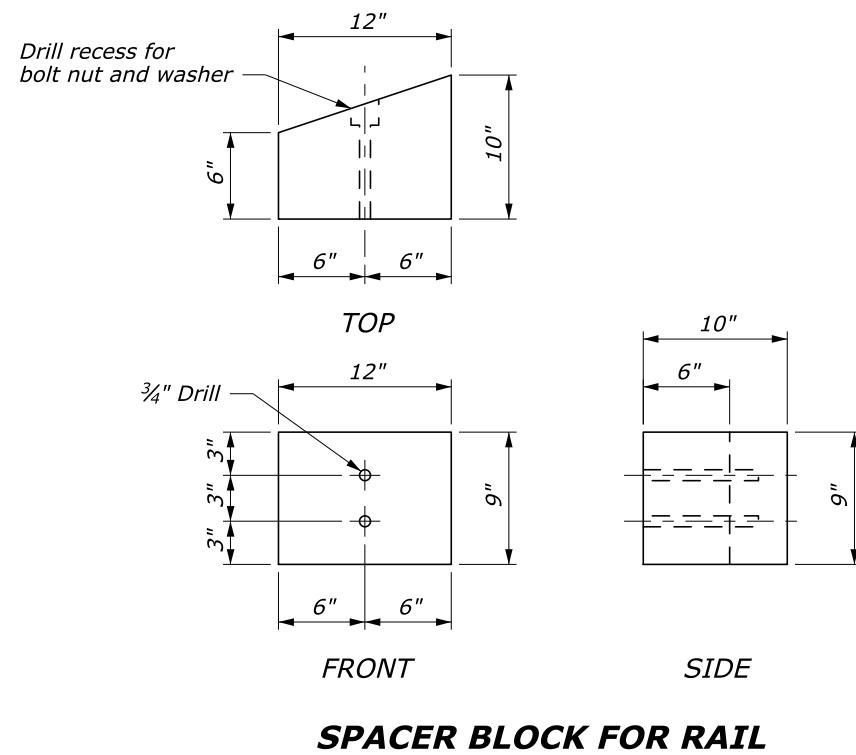
U.S. DEPARTMENT OF TRANSPORTATION
FEDERAL HIGHWAY ADMINISTRATION
EASTERN FEDERAL LANDS HIGHWAY DIVISION

U.S. CUSTOMARY DETAIL
**STEEL-BACKED TIMBER GUARDRAIL
CONNECTION TO
CURVED BACK STRUCTURE**
Sheet 2 of 3

STANDARD APPROVED FOR USE 1/1994
REVISED: 4/1994 9/2014

DETAIL
ET 617-66

H:\Team_Folders\HUGIFP_14_Detail_Review\ALL_FF14_DGN\st61766_EFL_TEMP.dgn 02-Dec-2014 09:20 AM



NO SCALE

U.S. DEPARTMENT OF TRANSPORTATION FEDERAL HIGHWAY ADMINISTRATION EASTERN FEDERAL LANDS HIGHWAY DIVISION	
U.S. CUSTOMARY DETAIL STEEL-BACKED TIMBER GUARDRAIL CONNECTION TO CURVED BACK STRUCTURE Sheet 3 of 3	
STANDARD APPROVED FOR USE 1/1994 REVISED: 4/1994	DETAIL ET 617-66

H:\Team_Folders\HUGIFP_14_Detail_Review\ALL_FP14_DGN\st61766_EFL_TEMP.dgn
 02-Dec-2014 09:20 AM