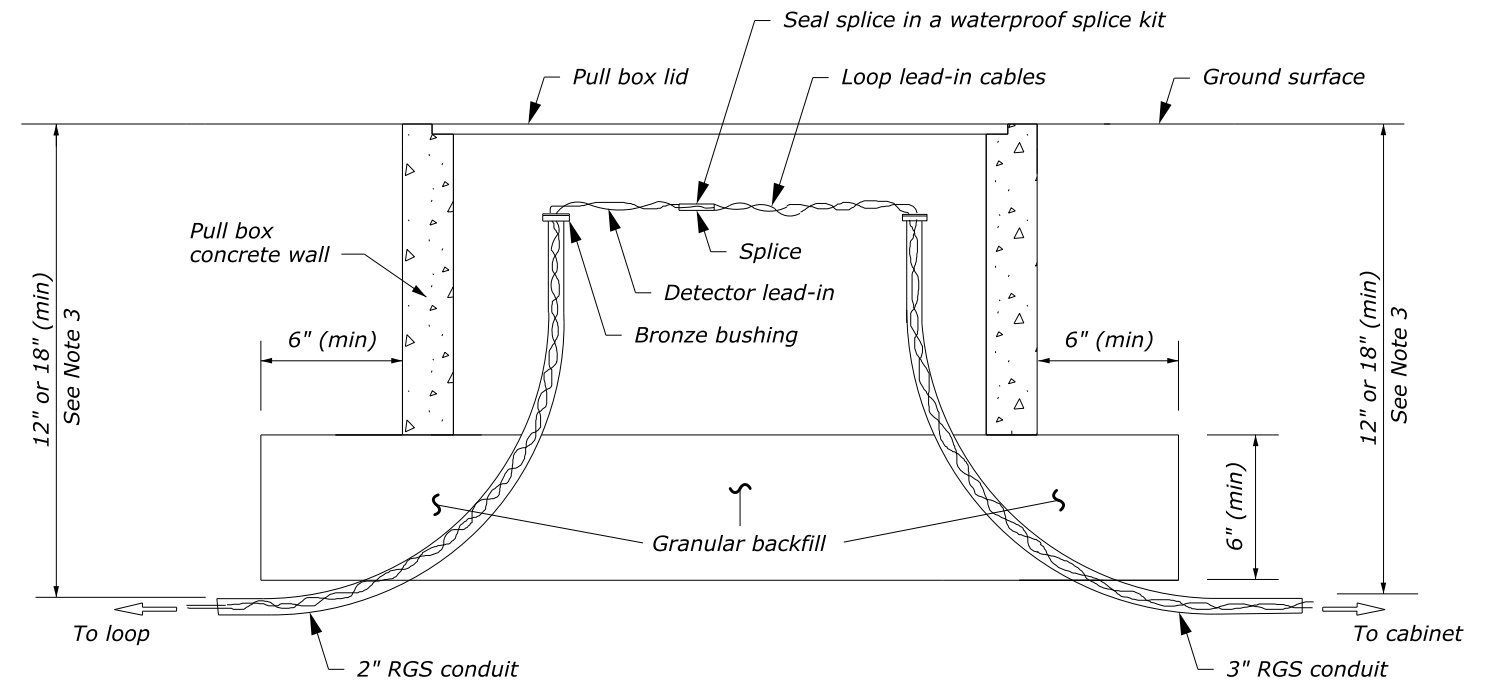


PULL BOX DETAIL

MINIMUM PULL BOX DIMENSIONS								
Type	Dimensions (in.)							
	A	B	C	D	E	F	G	H
1	18 1/8	11 1/4	1 3/4	20 1/4	13 3/8	12	15 3/4	8 7/8
2	23 1/4	13 3/4	2	25	15 1/2	12	19 1/4	9 3/4
3	30 1/2	17 1/2	2	32 1/4	19 1/4	12	26 1/2	13 1/2

NOTES:

1. Install pull boxes flush with the shoulder surface. Restore the disturbed area around the pull box and conduit installations.
2. On long runs, install pull boxes such that each box is separated by no more than 150 feet.
3. If conduit is located more than 30 feet from the travelway edge, provide a minimum cover of 12 inches. Otherwise, provide a minimum cover of 18 inches.
4. Terminate stranded conductors smaller than No. 14 in crimp style terminal lugs.
5. Install pull box type as determined by the CO.
6. Ensure splices occur only in pull box nearest the inductive loops. If more splices are needed to repair older installations, add another pull box.
7. Electrically bond metal conduit to each other inside pull box.



PULL BOX INSTALLATION

NO SCALE

U.S. DEPARTMENT OF TRANSPORTATION FEDERAL HIGHWAY ADMINISTRATION EASTERN FEDERAL LANDS HIGHWAY DIVISION	
U.S. CUSTOMARY DETAIL	
INDUCTIVE LOOP PULL BOX	
DETAIL APPROVED FOR USE APPROVED : MARCH 2015	DETAIL E636-04