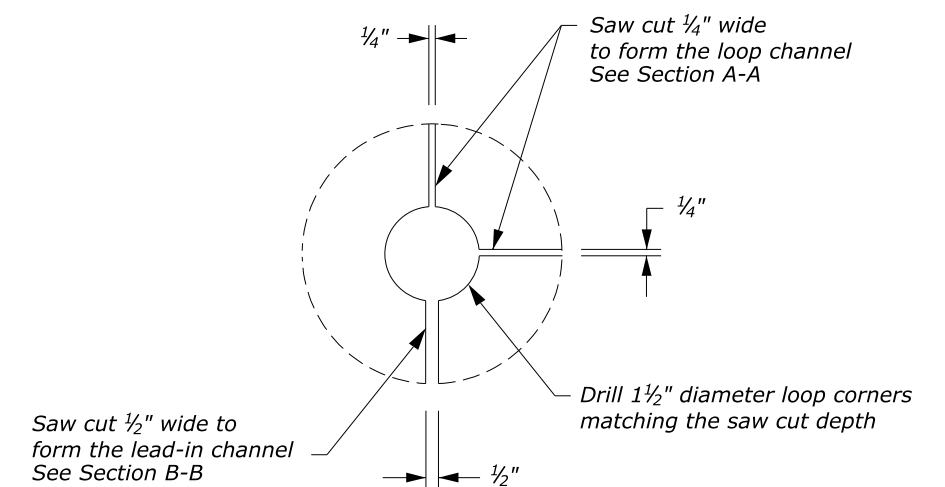
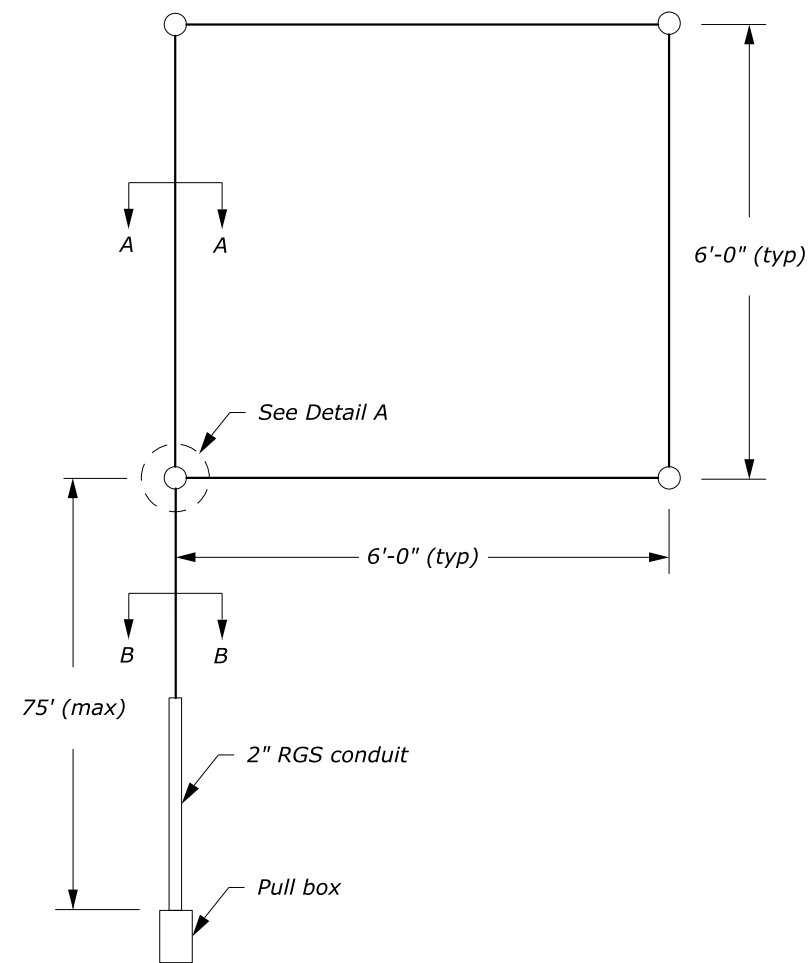
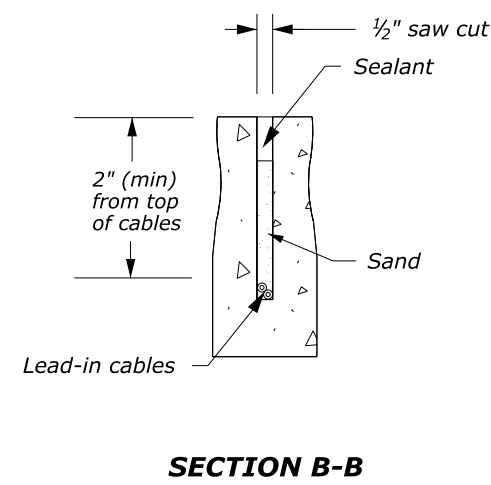
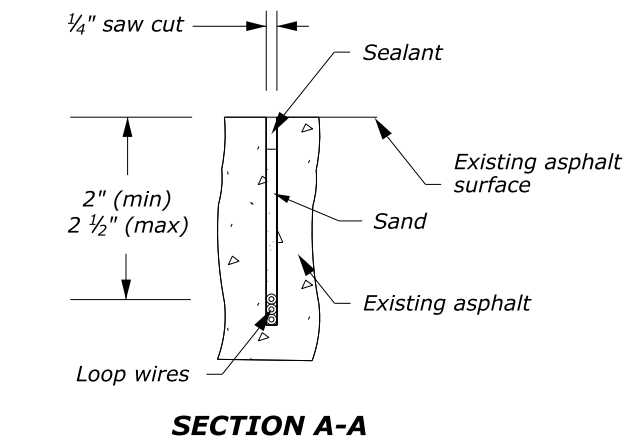


NOTES:

1. Ensure the loop channel and corners are smooth. Remove any burrs or roughness to full depth.
2. Identify and tag loop circuit pairs in the pull box with loop number and the start (S) and finish (F) of the conductor. Identify and tag lead-in cable with sensor number and lane.
3. Before applying sealant, test each loop and lead-in for continuity and circuit resistance.
4. Waterproof end of lead-in cable and loop conductor before placing in conduit.



SAW CUT LOOP DETAIL

DETAIL A

NO SCALE

U.S. DEPARTMENT OF TRANSPORTATION FEDERAL HIGHWAY ADMINISTRATION EASTERN FEDERAL LANDS HIGHWAY DIVISION	
U.S. CUSTOMARY DETAIL	
INDUCTIVE LOOP INSTALLATION	
DETAIL APPROVED FOR USE	DETAIL
APPROVED : MARCH 2015	E636-03