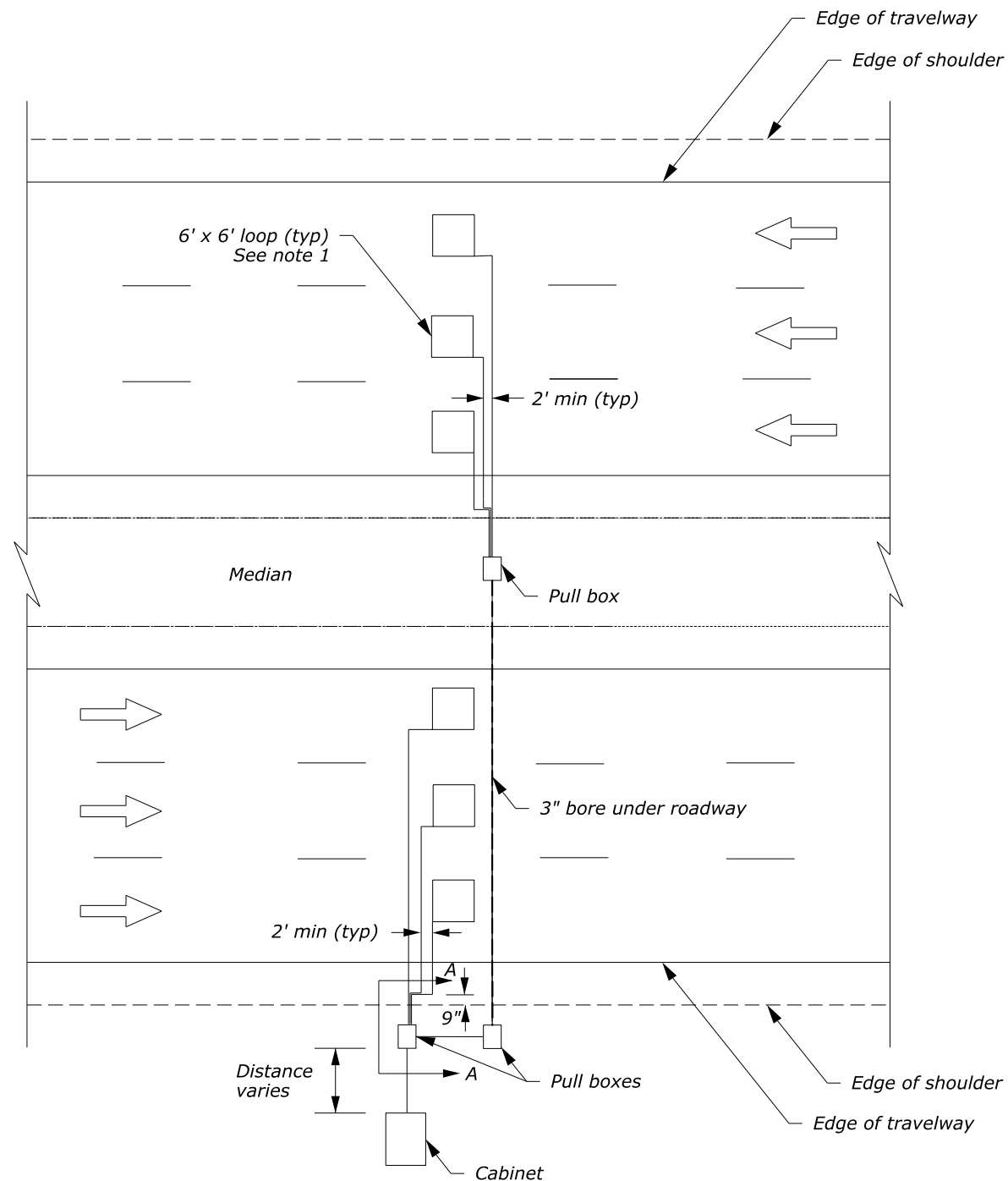
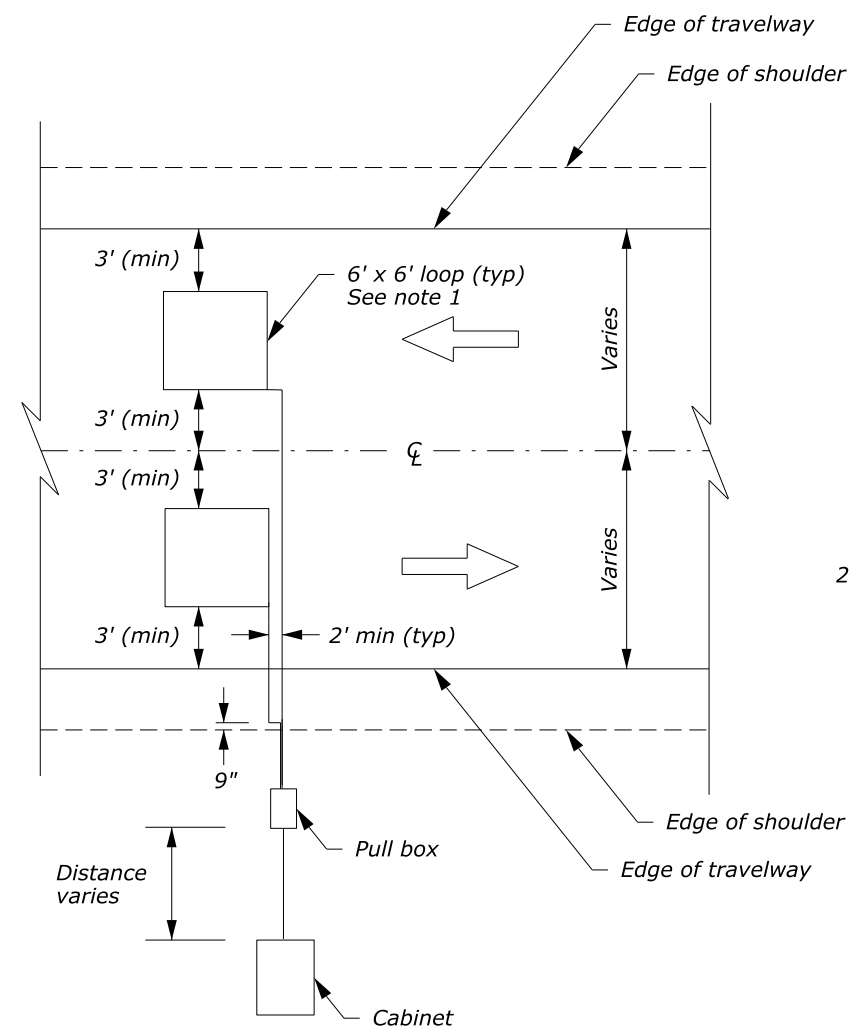


NOTES:

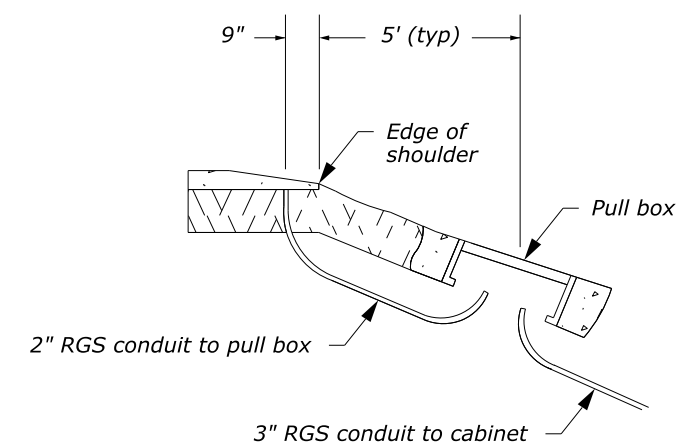
1. Install square inductive loop in the center of each lane, with sides perpendicular and parallel to the centerline. If the lane width is less than 12 feet, maintain 3 feet of clearance from each lane edge and reduce the size of the loop accordingly.
2. For each loop, install the loop wire in one continuous length with no splices.
3. Provide dedicated saw cuts for each loop, including separate lead-in channels.
4. Provide dedicated rigid galvanized steel (RGS) conduits for each lead-in from the edge of pavement to the nearest pull box.
5. For 10 foot lanes, provide a 5 foot loop with 2.5 feet on each side of the loop.
6. Do not install inductive loops on lanes less than 10 feet wide.
7. See Detail E636-03 for installation procedures.



LOOP INSTALLATION IN MULTI-LANE DIVIDED ROADWAY



LOOP INSTALLATION IN UNDIVIDED ROADWAY



SECTION A-A

NO SCALE

U.S. DEPARTMENT OF TRANSPORTATION FEDERAL HIGHWAY ADMINISTRATION EASTERN FEDERAL LANDS HIGHWAY DIVISION	
U.S. CUSTOMARY DETAIL	
INDUCTIVE LOOP SINGLE LOOP PER LANE	
DETAIL APPROVED FOR USE	DETAIL
APPROVED : MARCH 2015	E636-01