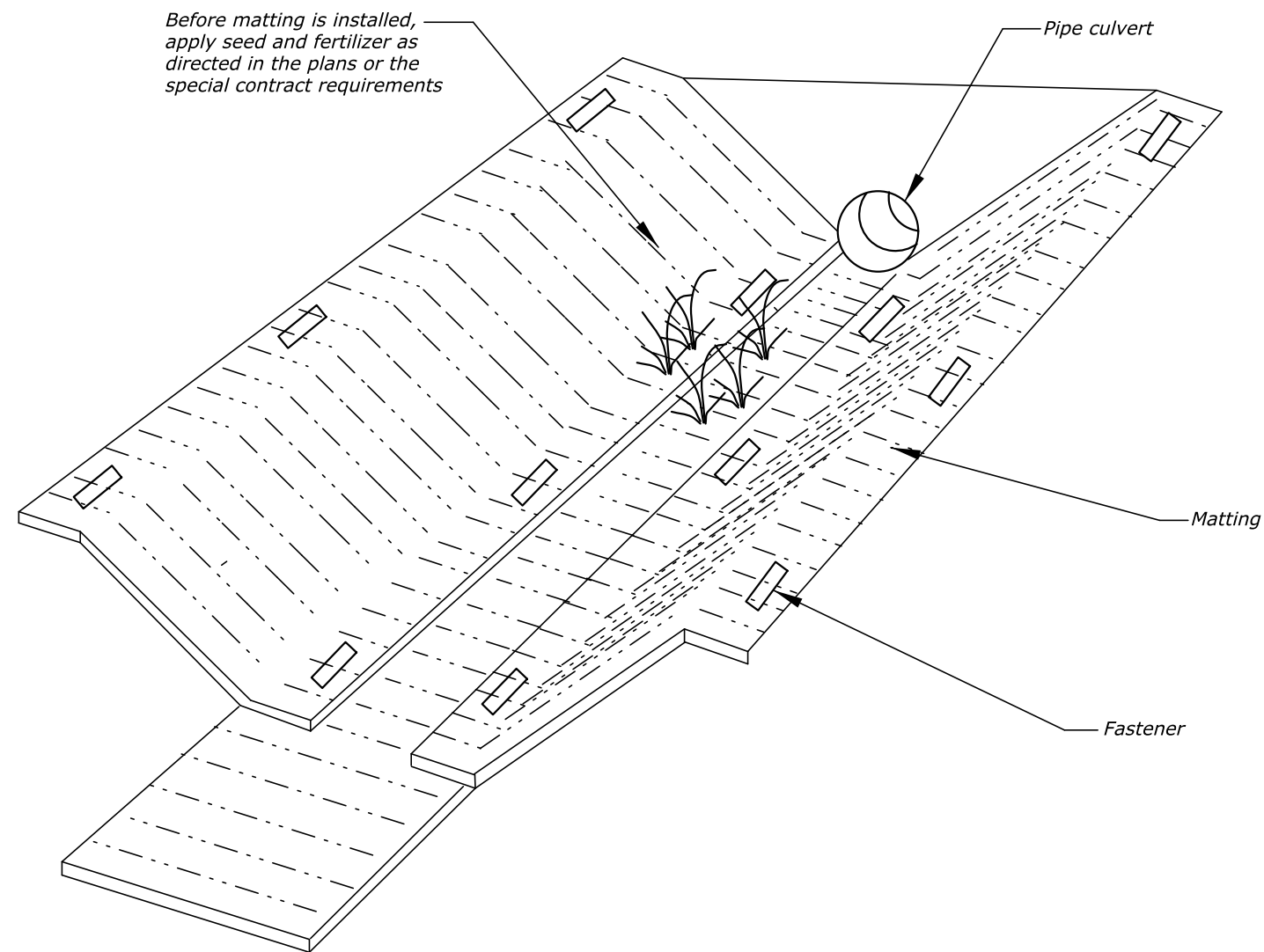


STATE	PROJECT	SHEET NUMBER



DETAIL FOR STABILIZING PIPE INLETS WITH MATTING

NO SCALE

U.S. DEPARTMENT OF TRANSPORTATION FEDERAL HIGHWAY ADMINISTRATION EASTERN FEDERAL LANDS HIGHWAY DIVISION	
U.S. CUSTOMARY DETAIL	
PIPE INLET STABILIZATION	
DETAIL APPROVED FOR USE	DETAIL
APPROVED : MAY 2011 REVISED: SEPTEMBER 2014	E629-03