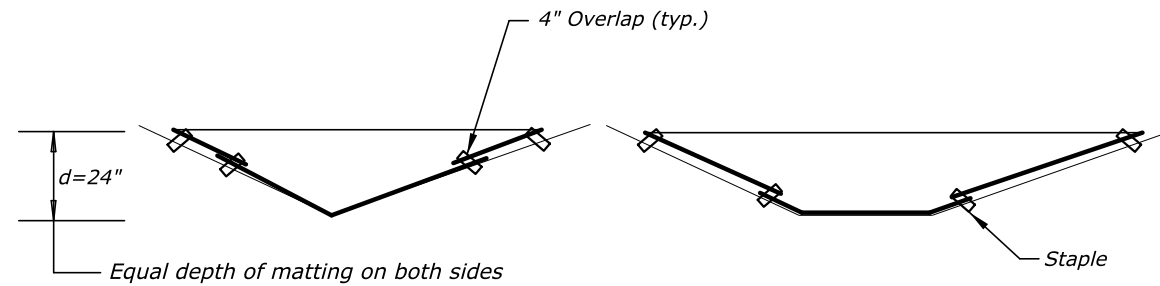
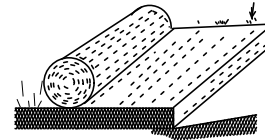


Install matting along the bottom of all ditches and up the side slopes as follows:

Step 1: Bury the top end of the mat strip in a trench 6" or more in depth.

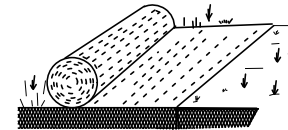


**CROSS SECTION THROUGH V AND FLAT BOTTOM DITCHES**

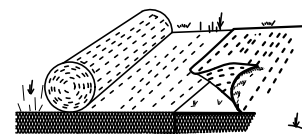
**NOTE:**

1. Apply seed, fertilizer, and mulch, as directed in the plans and special contract requirements, before placing matting.

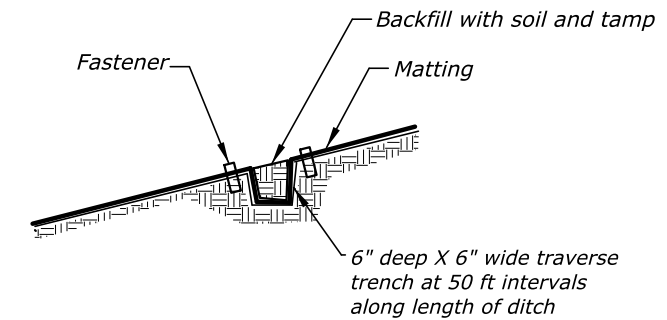
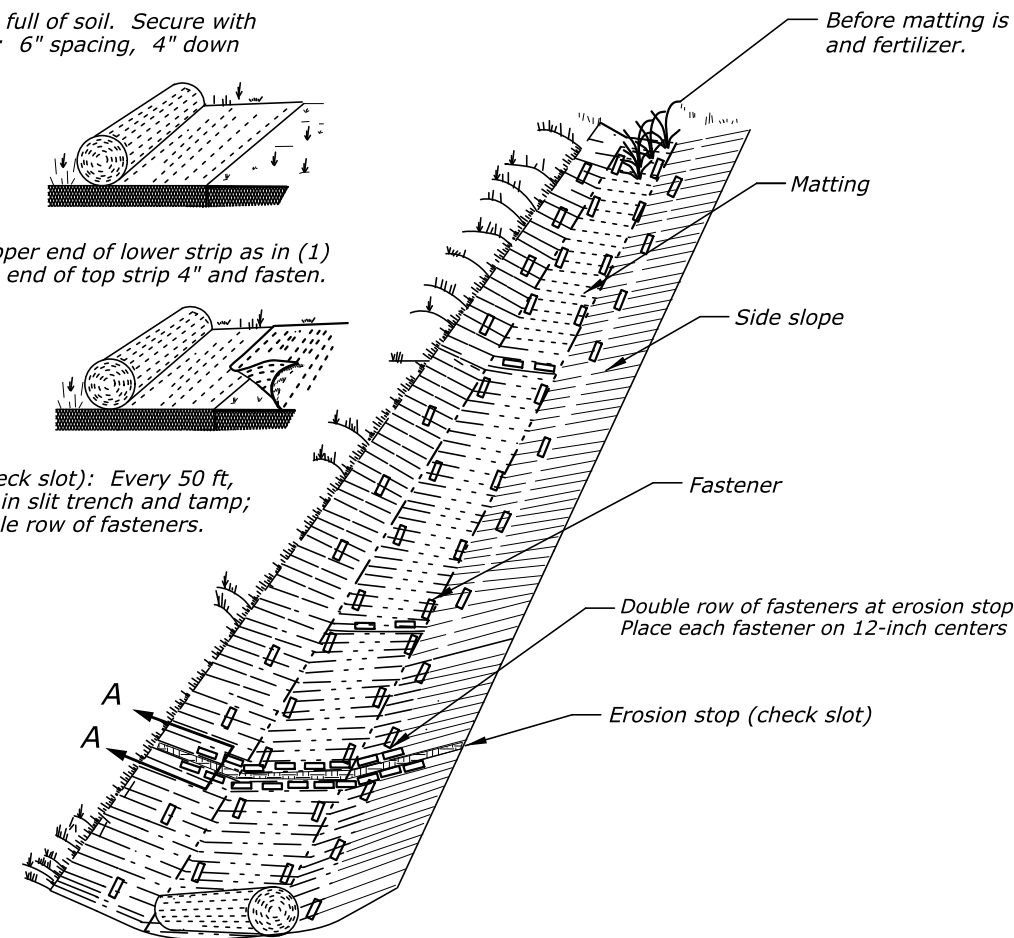
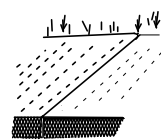
Step 2: Tamp the trench full of soil. Secure with row of fasteners: 6" spacing, 4" down from the trench.



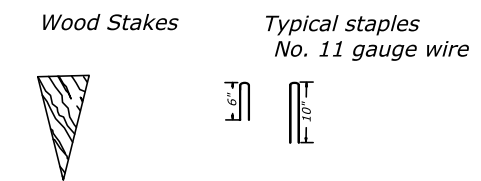
Step 3: Overlap- bury upper end of lower strip as in (1) and (2). Overlap end of top strip 4" and fasten.



Step 4: Erosion stop (check slot): Every 50 ft, bury fold of mat in slit trench and tamp; fasten with double row of fasteners. See Section A-A



**SECTION A-A  
Erosion Stop (Check Slot) Detail**



**DETAIL A  
Typical Ground Fasteners**

**DETAIL FOR PERMANENTLY STABILIZING DITCHES WITH MATTING**

NO SCALE

U.S. DEPARTMENT OF TRANSPORTATION FEDERAL HIGHWAY ADMINISTRATION EASTERN FEDERAL LANDS HIGHWAY DIVISION	
U.S. CUSTOMARY DETAIL	
<b>DITCH STABILIZATION WITH MATTING</b>	
DETAIL APPROVED FOR USE	DETAIL
APPROVED: MAY 2011 REVISED: SEPTEMBER 2014	E629-02