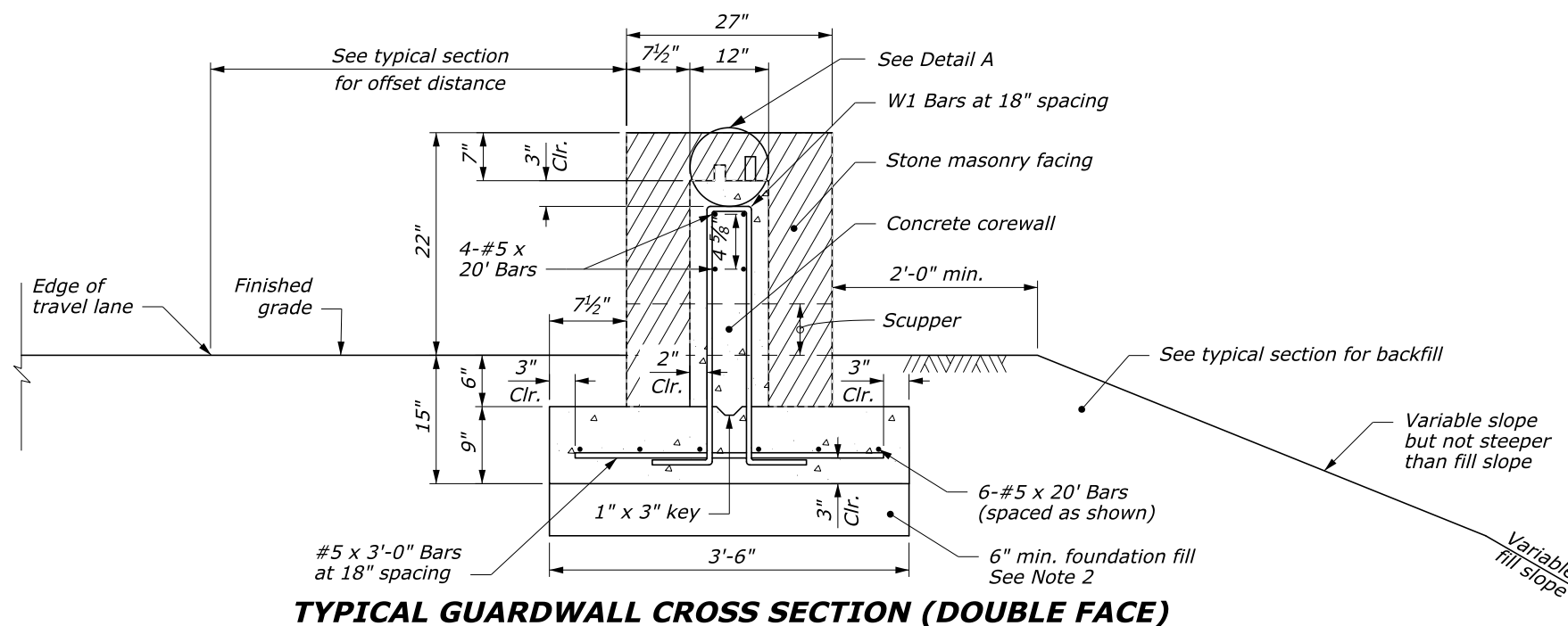
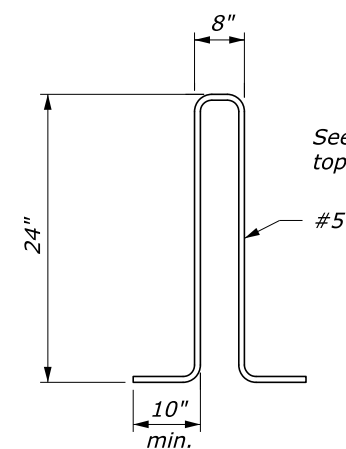
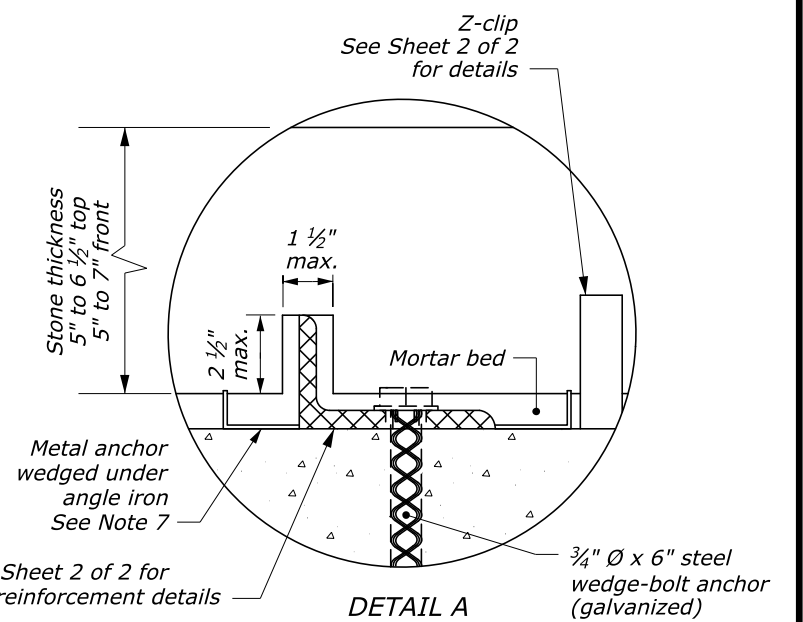


**NOTES:**

1. Form contraction joints in the corewall at 20' intervals.
2. The depth of foundation fill may be less than 6" as directed by the CO, when the foundation is on either rock fill or solid rock.
3. Set galvanized metal slots with anchors for the stone work on 2' spacing. Use 16 gage galvanized 1" x 5 1/2" metal anchors. Equivalent attachment systems are allowed with the approval of the CO.
4. Kerf (sawcut) the capstones placed on top of the barrier to allow for their placement over the steel angle.
5. Construct masonry faces according to Subsection 620.01(d).
6. Flare guardwall ends outside the clear zone according to the Roadside Design Guide.
7. Install metal anchor according to Subsection 620.08(b).
8. Add scuppers for roadway drainage as directed by the CO.
9. Top angle of z-clip to engage a recess cut in stone.



U.S. DEPARTMENT OF TRANSPORTATION  
 FEDERAL HIGHWAY ADMINISTRATION  
 EASTERN FEDERAL LANDS HIGHWAY DIVISION

U.S. CUSTOMARY DETAIL

**TL-2 STONE MASONRY  
 GUARDWALL (DOUBLE FACE)**

Sheet 1 of 2

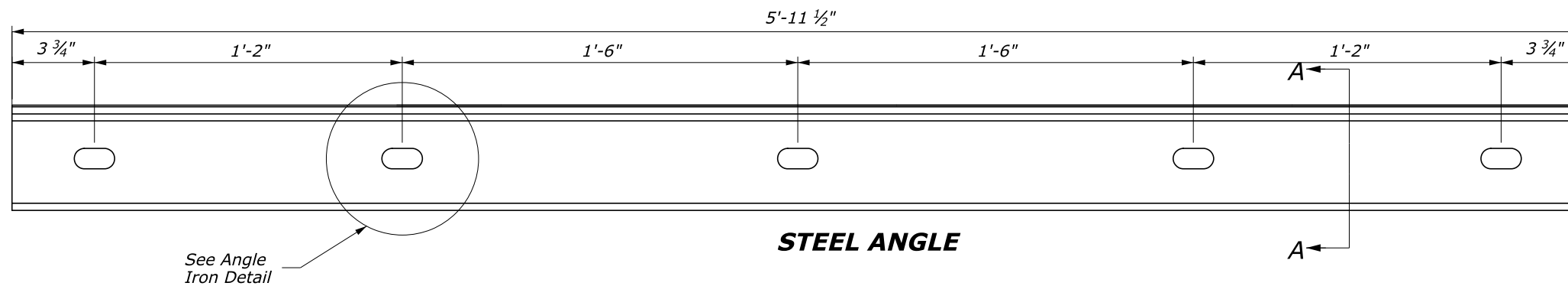
DETAIL APPROVED FOR USE

APPROVED : APRIL 2013  
 REVISED : SEPTEMBER 2014

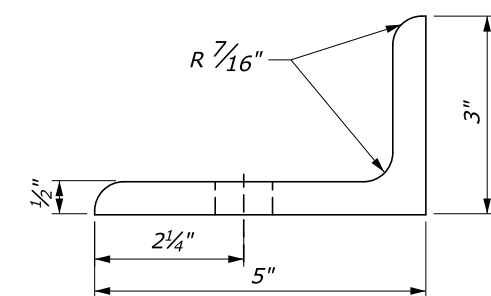
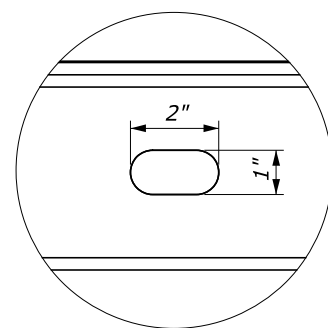
E620-50

01-Dec-2014 03:30 PM H:\Team\_Folder\NVDUG\FP\_4\_Detail\_Review\ALL\_FPI4\_D6W\62050\_detail.dgn

NO SCALE

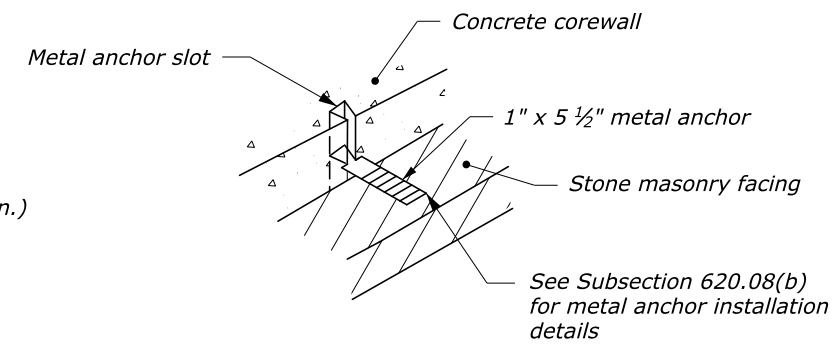
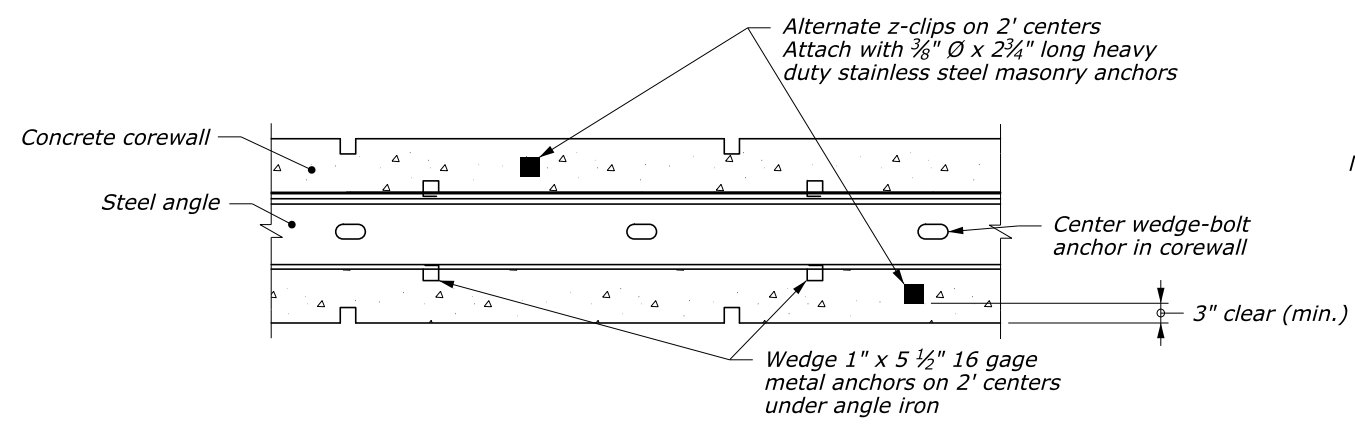
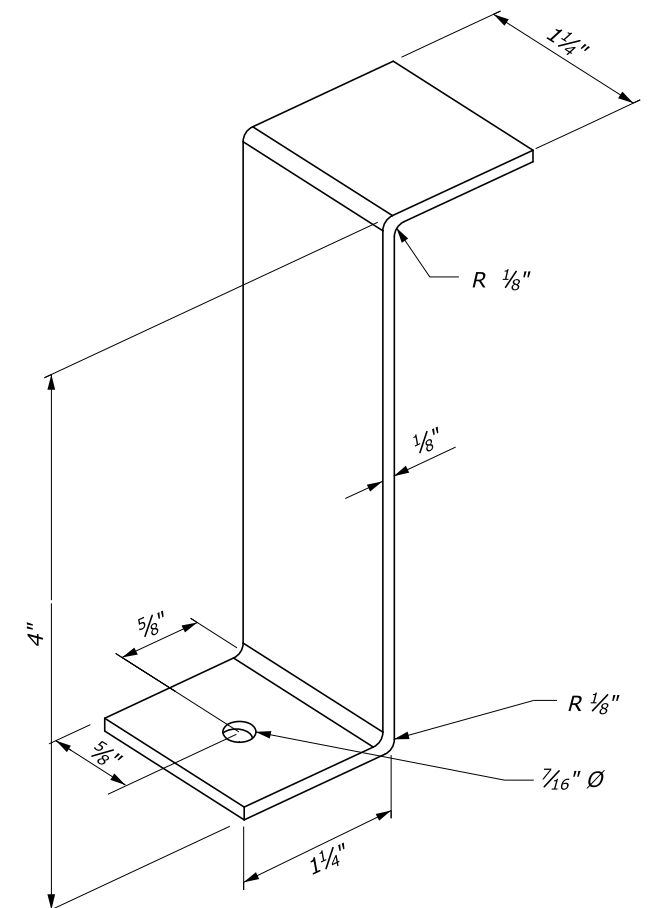


See Angle Iron Detail



**NOTES:**

- Angles are used to provide lateral shear resistance for the stone masonry placed on top of the inner core wall.
- Spacing between all angles is approximately 1/2".



U.S. DEPARTMENT OF TRANSPORTATION FEDERAL HIGHWAY ADMINISTRATION EASTERN FEDERAL LANDS HIGHWAY DIVISION	
U.S. CUSTOMARY DETAIL	
<b>TL-2 STONE MASONRY GUARDWALL (DOUBLE FACE)</b>	
Sheet 2 of 2	
DETAIL APPROVED FOR USE	DETAIL
APPROVED: APRIL 2013 REVISED: SEPTEMBER 2014	E620-50

NO SCALE

01-Dec-2014 03:31 PM H:\Team\_Folders\HVDUG\FP4\_Detail\_Review\ALL\_FP4\_Detail\_Review\62050\_detail.dgn