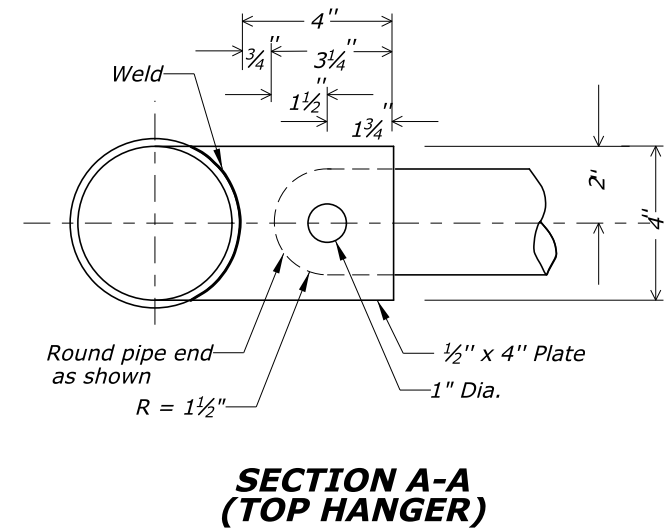
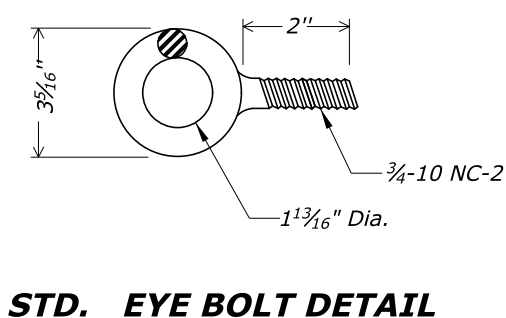
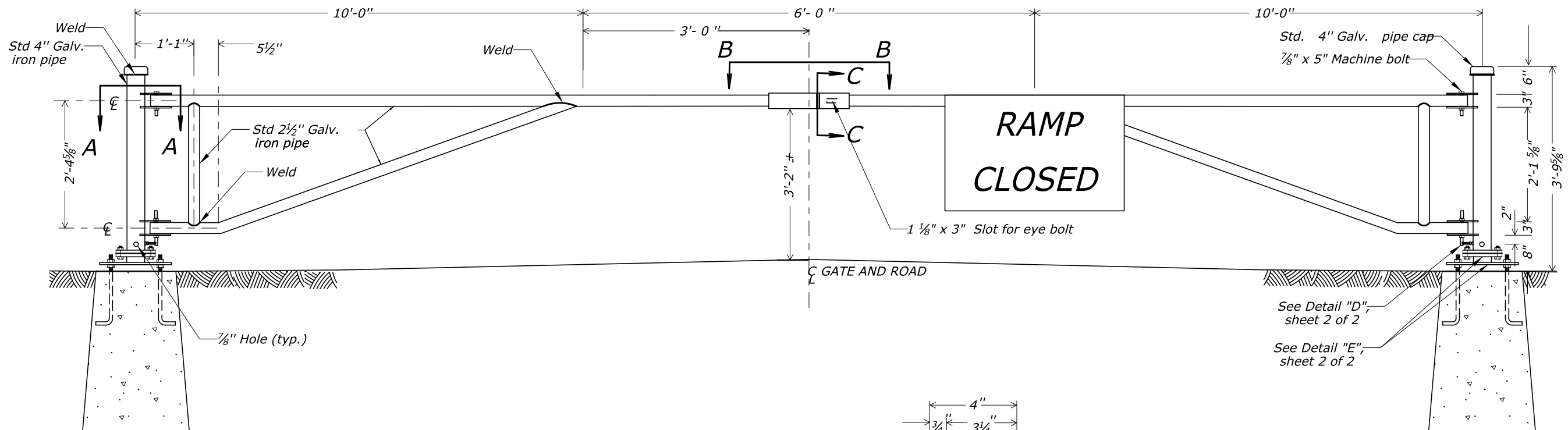


- Notes:**
1. Close the top end of each rest posts with a 4 1/2" dia. x 1/8" thick steel plate, formed to fit and welded in place.
 2. Paint gates and posts, alternating black and reflectorized white 4-inch stripes at 45°, as directed by CO.
 3. Galvanize all metal parts.
 4. Concrete conforms to Section 601.
 5. Mount one "RAMP CLOSED" sign on the gate as shown.
 6. The Contractor may propose alternate designs for the adjustable gate post base, breakaway gate post, or breakaway gate connection. Submit alternate designs to the CO for written approval at least 3 weeks before the applicable work.



NO SCALE

U.S. DEPARTMENT OF TRANSPORTATION
FEDERAL HIGHWAY ADMINISTRATION
EASTERN FEDERAL LANDS HIGHWAY DIVISION

U.S. CUSTOMARY DETAIL

METAL GATE WITH BREAKAWAY SUPPORTS, 26-FOOT WIDTH

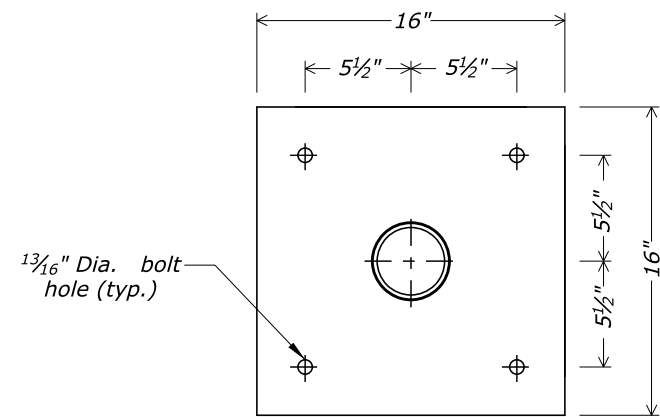
Sheet 1 of 2

DETAIL APPROVED FOR USE

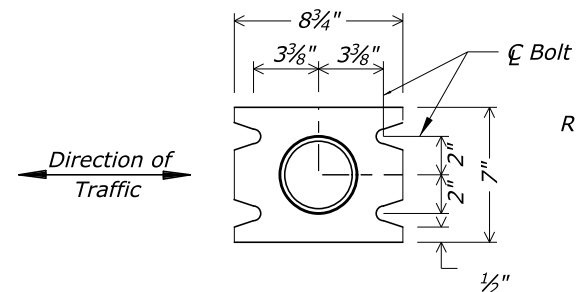
APPROVED : MAY 2011
REVISED: SEPTEMBER 2014

DETAIL
E619-13

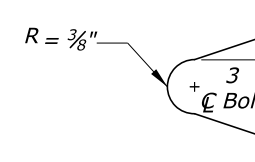
01-Dec-2014 03:05 PM \$TIME\$ H:\Team_Folders\HUBUS\FP_14_Detail_Review\ALL_FPI4_D01\61913_detail.dgn



BASE PLATE DETAIL



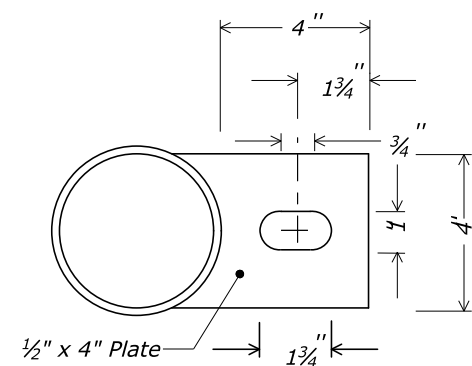
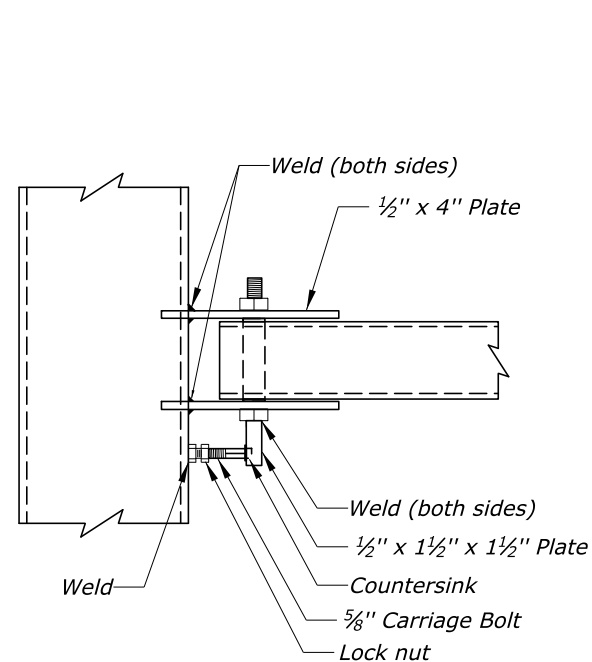
SLIP BASE PLATE DETAIL



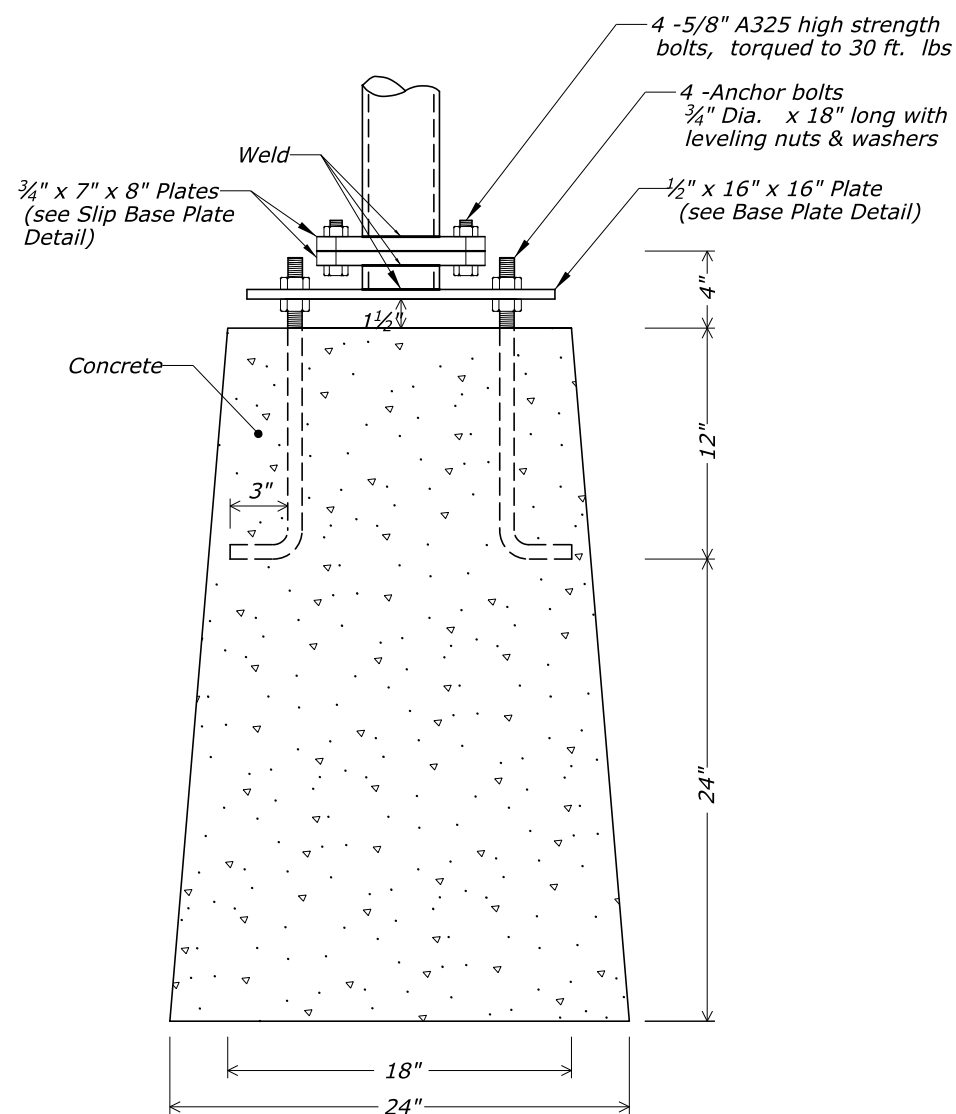
SLOT DETAIL

Notes:

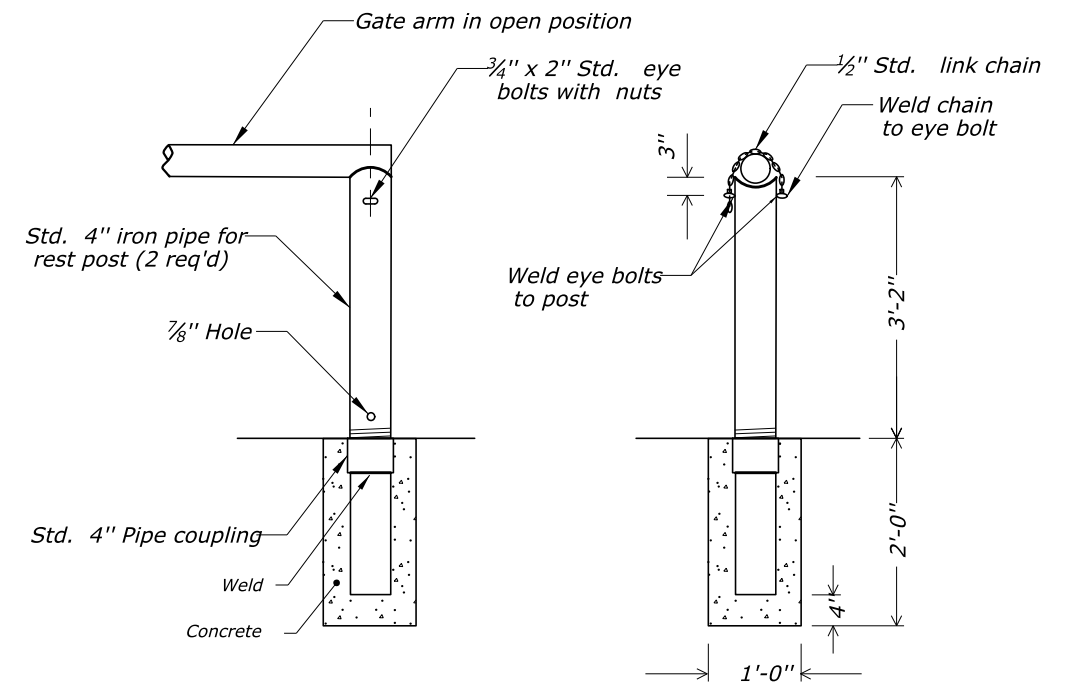
1. Provide washer contact areas for slip bases which are free of burrs, galvanizing runs or beads, or rough edges. Rub washer contact areas with paraffin immediately prior to the installation of slip bases.



**DETAIL "D"
(BOTTOM HANGER)**



**DETAIL "E"
ADJUSTABLE BREAKAWAY GATE POST BASE
AND CONCRETE FOUNDATION**



REST POST DETAIL

NO SCALE

01-Dec-2014 03:05 PM \$TIME\$ H:\Team_Folders\VIDU\CFP_14_Detail_Review\ALL_FPH_DGN\61913_Detail.dgn

U.S. DEPARTMENT OF TRANSPORTATION FEDERAL HIGHWAY ADMINISTRATION EASTERN FEDERAL LANDS HIGHWAY DIVISION	
U.S. CUSTOMARY DETAIL	
METAL GATE WITH BREAKAWAY SUPPORTS, 26-FOOT WIDTH	
Sheet 2 of 2	
DETAIL APPROVED FOR USE	DETAIL
APPROVED : MAY 2011 REVISED : SEPTEMBER 2014	E619-13