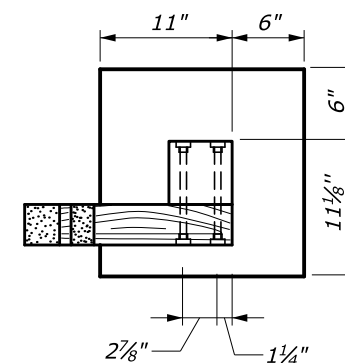
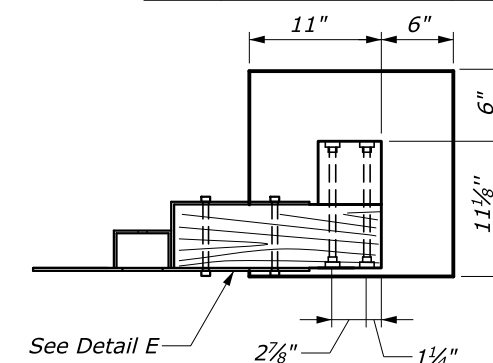


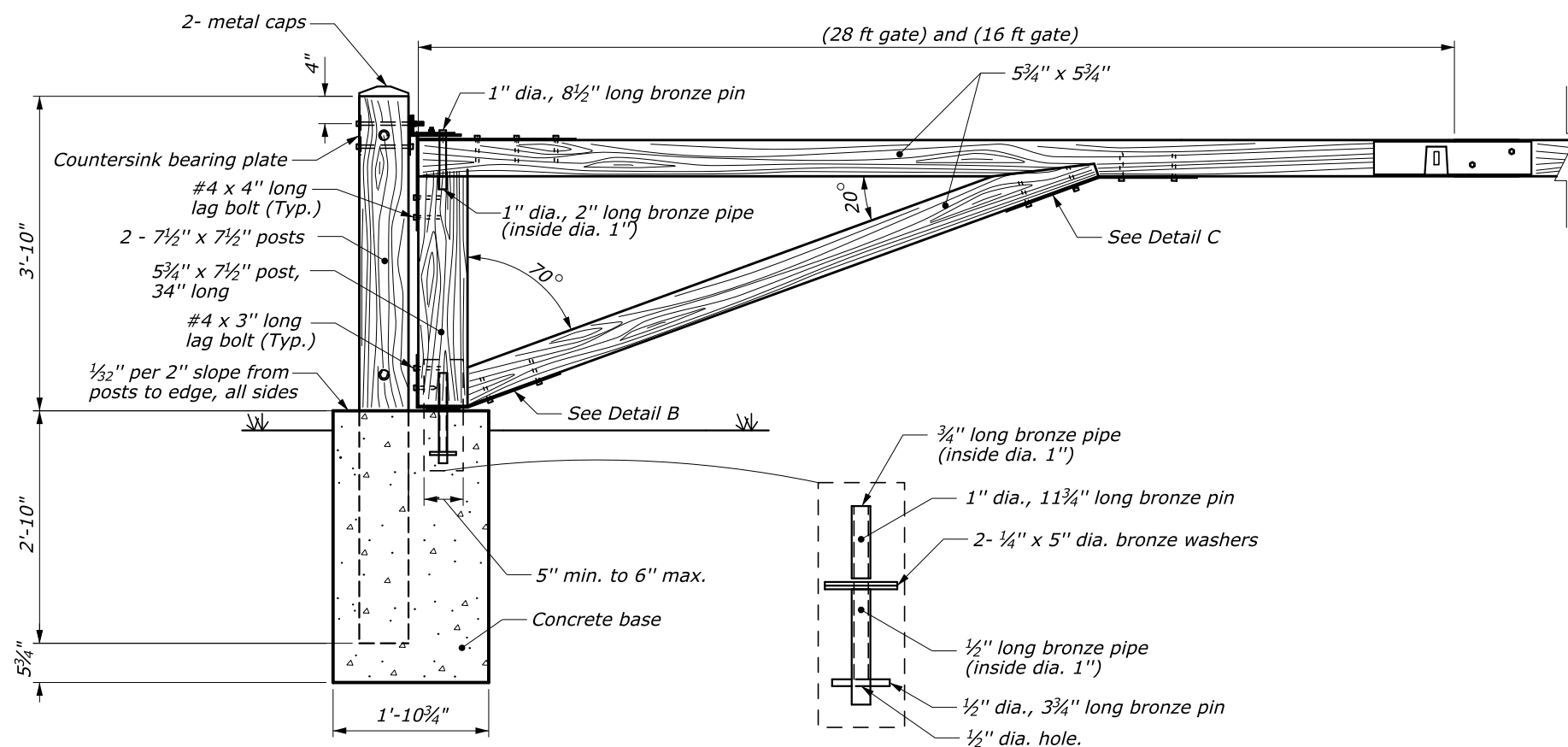
PLAN



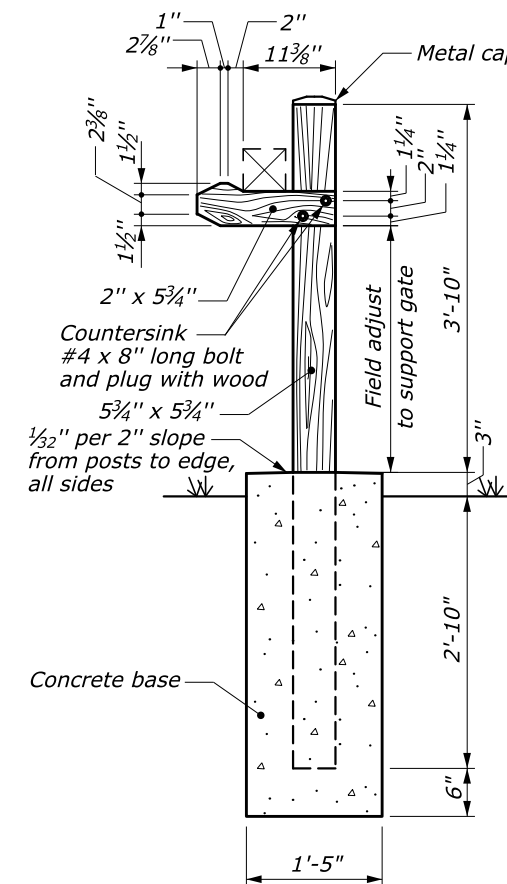
REST POST PLAN



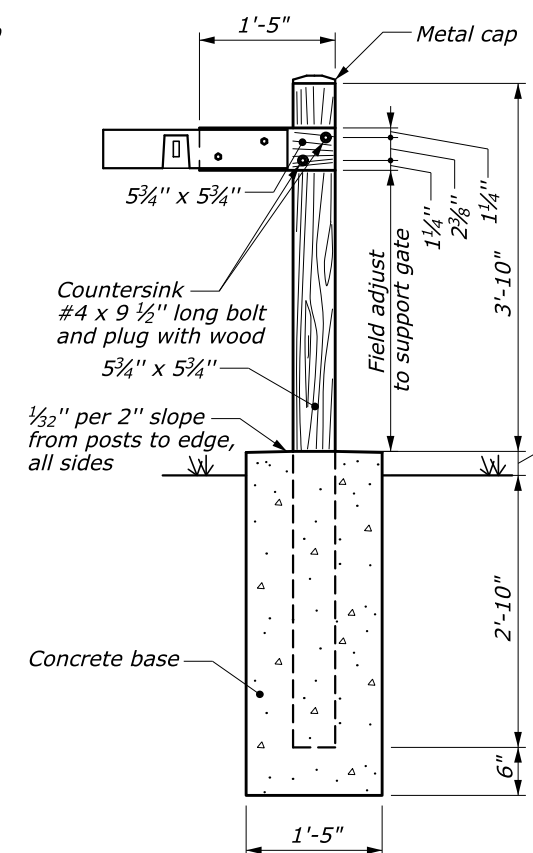
LOCK POST PLAN



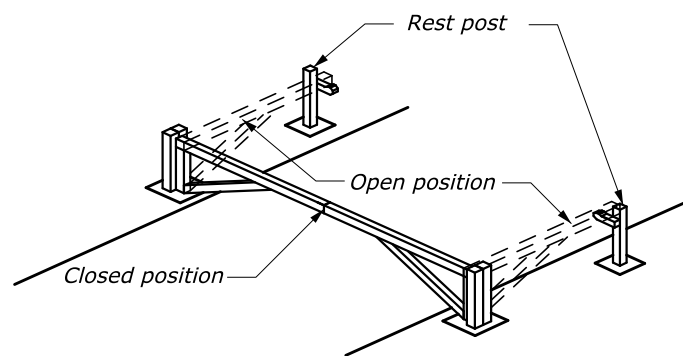
ELEVATION



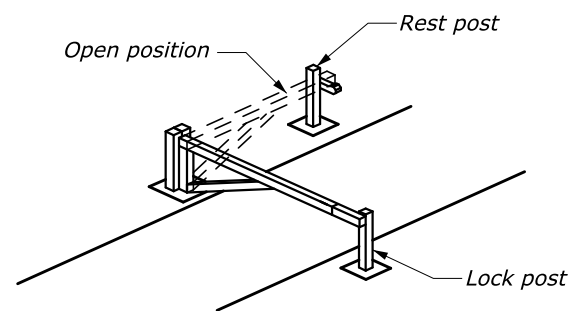
REST POST ELEVATION



LOCK POST ELEVATION



ISOMETRIC VIEW OF 28-FOOT GATE



ISOMETRIC VIEW OF 16-FOOT GATE

NOTES:

1. All Bolts #4 unless otherwise noted.
2. Use 1 inch dia. washers under all bolt heads and nuts unless otherwise noted.
3. All hardware, except parts made of bronze, are galvanized (double hot dipped after fabrication).
4. Timbers are select douglas fir or southern yellow pine (545). Pressure treat posts embedded in concrete to 0.60 to 0.80 CCA. All other timbers are 0.40 CCA pressure treated. Apply three brush coats of CCA to all saw cut areas and drilled holes.
5. Make all necessary field adjustments (with approval from the CO) to produce a plumb gate.
6. Conform to Section 601.

NO SCALE

U.S. DEPARTMENT OF TRANSPORTATION
FEDERAL HIGHWAY ADMINISTRATION
EASTERN FEDERAL LANDS HIGHWAY DIVISION

U.S. CUSTOMARY DETAIL

16 FT AND 28 FT GATES

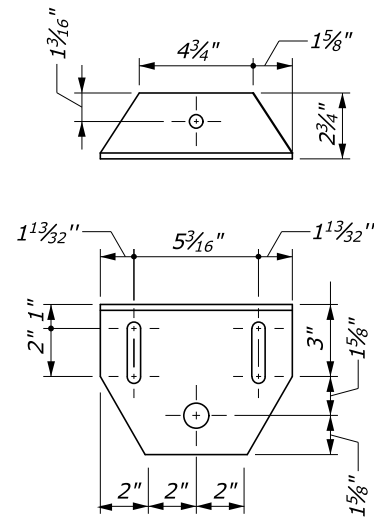
Sheet 1 of 2

DETAIL APPROVED FOR USE

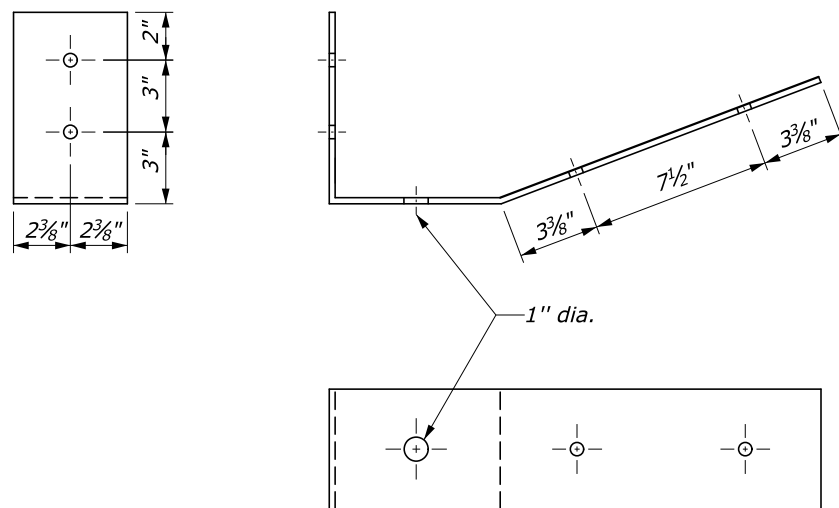
APPROVED: MAY 2011
REVISED: SEPTEMBER 2014

DETAIL

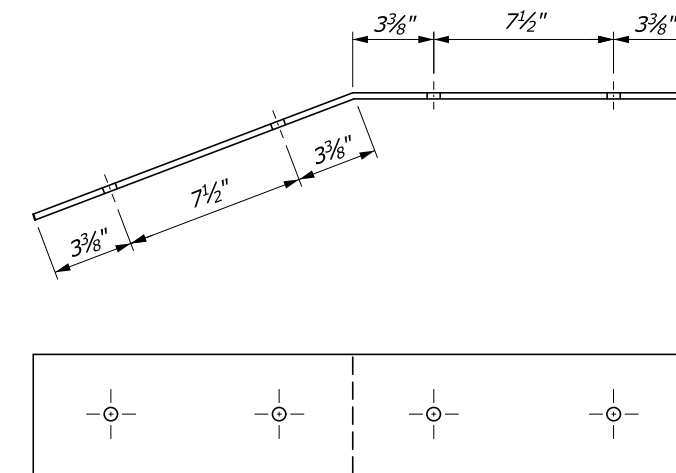
E619-04



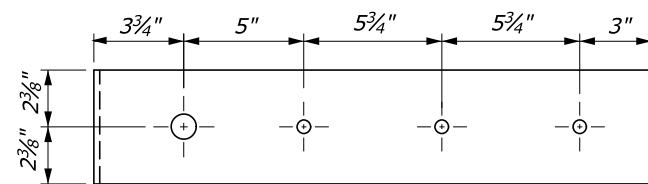
DETAIL A



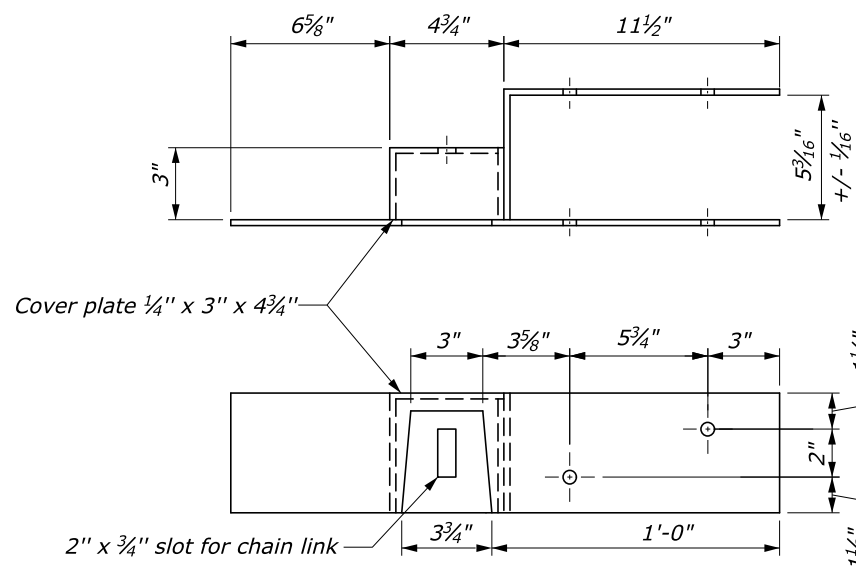
DETAIL B



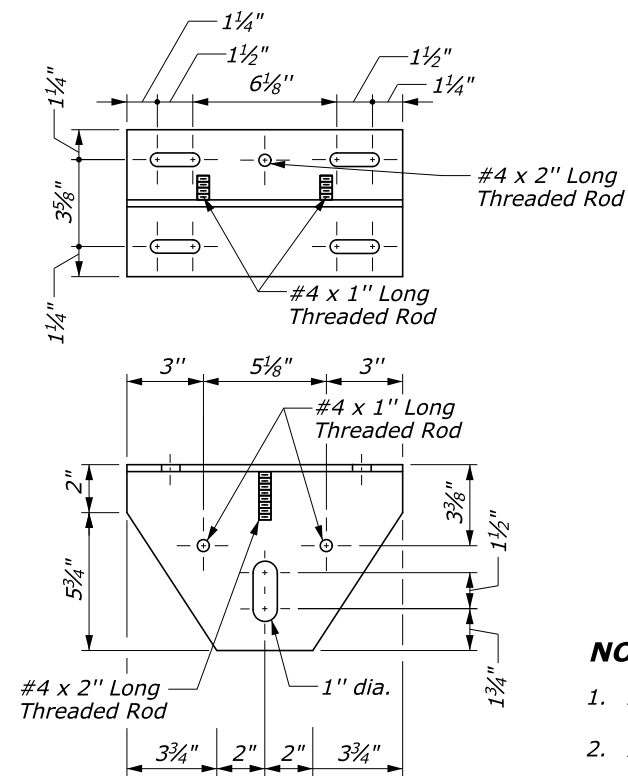
DETAIL C



DETAIL D



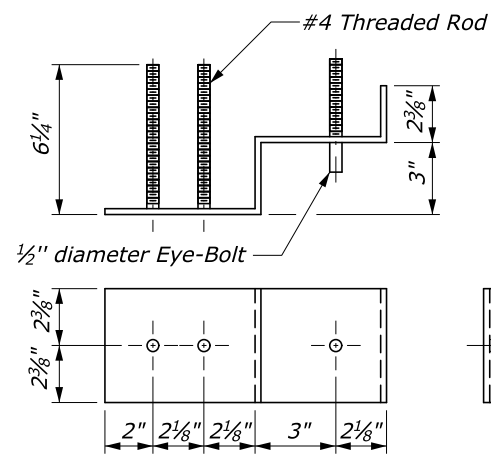
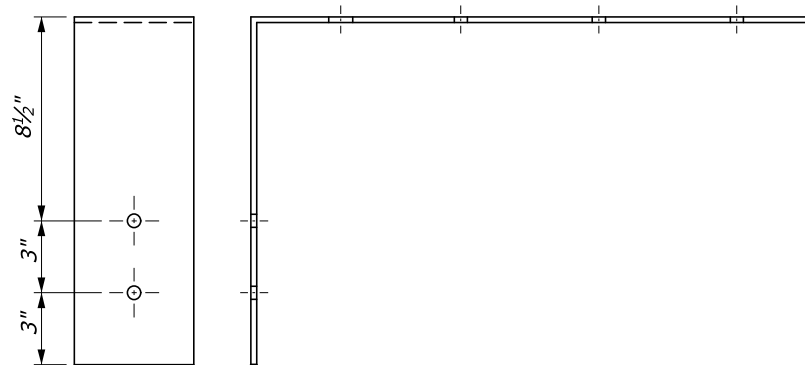
DETAIL E



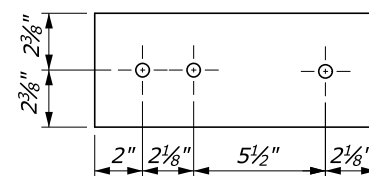
DETAIL F

NOTES:

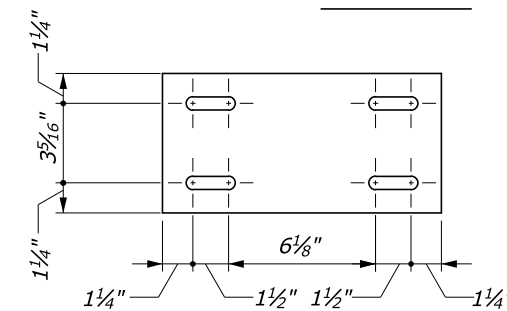
1. All Steel plates to be 1/4 inches thick.
2. All holes 5/16 inches dia. unless shown.
3. All bolts 1/2 inches dia. unless shown.
4. All Steel plates and hardware to be galvanized (double hot dipped after fabrication).
5. Verify all dimensions.



DETAIL G



DETAIL H



DETAIL J