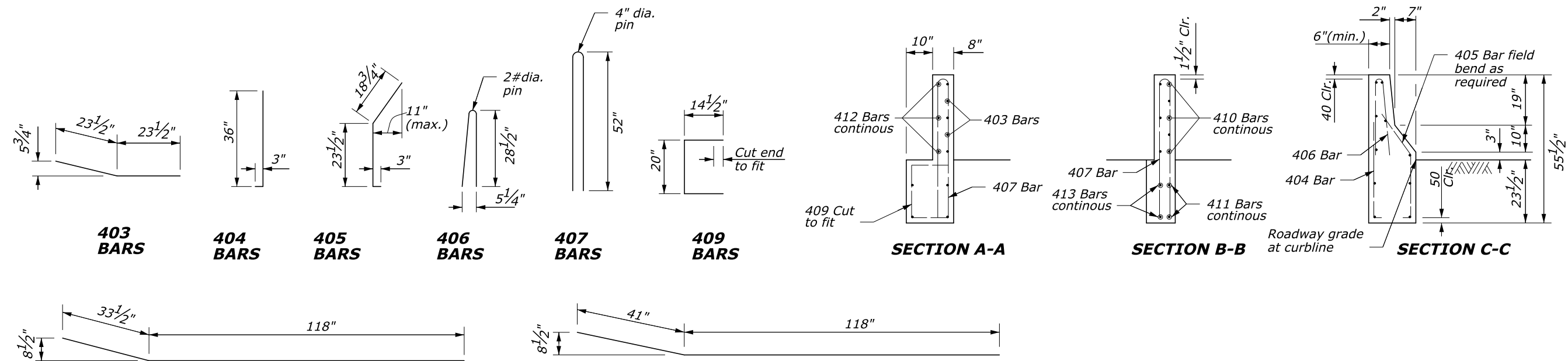
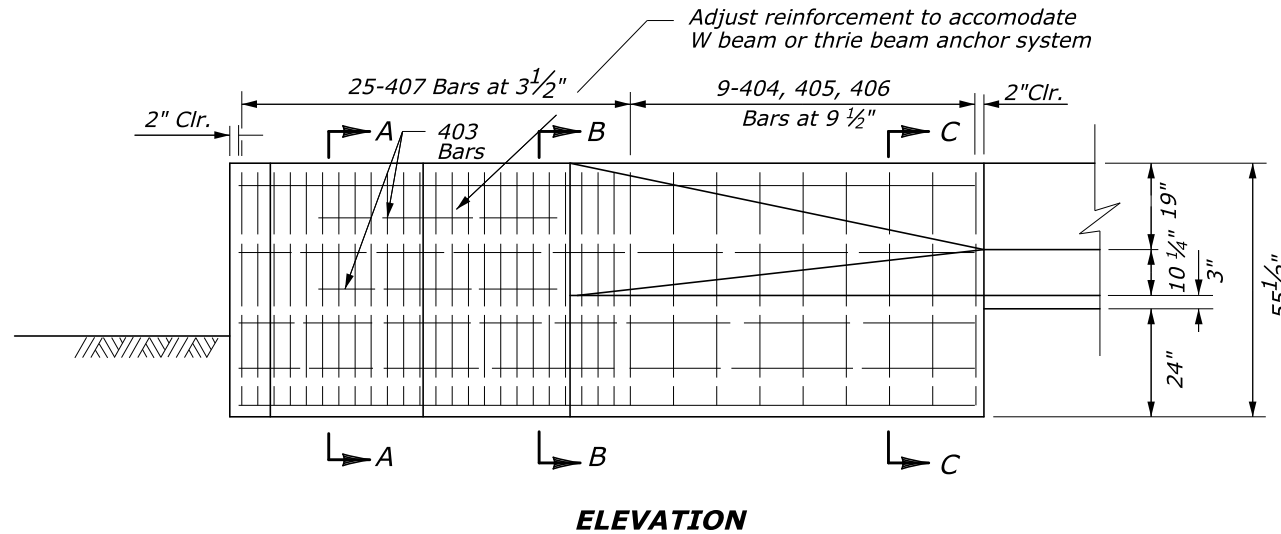


- NOTES:**
1. **CONCRETE:** Structural concrete Class A(AE), with a specified minimum 28-day compressive strength $F'_c=4.35$ kips/in. Vibrate all concrete. Chamfer exposed edges $\frac{3}{4}$ " unless otherwise shown. Do not use calcium chloride additives in the concrete.
 2. The minimum concrete covering to the face of any bar is $1\frac{1}{2}$ " unless otherwise shown. All bars are #4.
 3. **FINISHING CONCRETE:** Give all concrete surfaces a Class 1 finish except as specified in the Special Contract Requirements.



U.S. DEPARTMENT OF TRANSPORTATION
FEDERAL HIGHWAY ADMINISTRATION
EASTERN FEDERAL LANDS HIGHWAY DIVISION

U.S. CUSTOMARY DETAIL

**G4 W BEAM GUARDRAIL
FLARED BACK PARAPET WALL
AND SAFETY SHAPE TRANSITION**

DETAIL APPROVED FOR USE

APPROVED: MAY 2011
REVISED: SEPTEMBER 2014

DETAIL
E617-32

No Scale