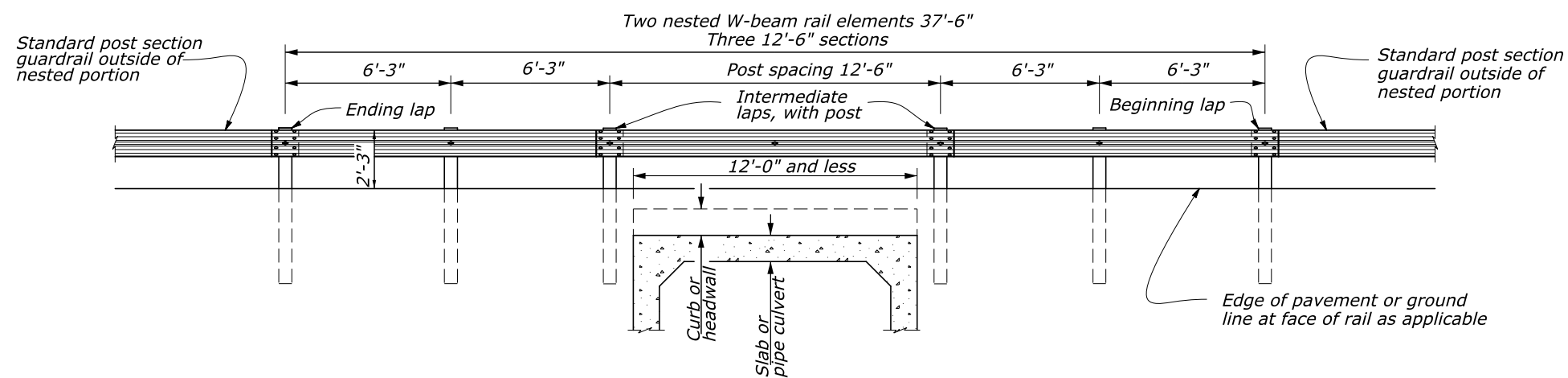
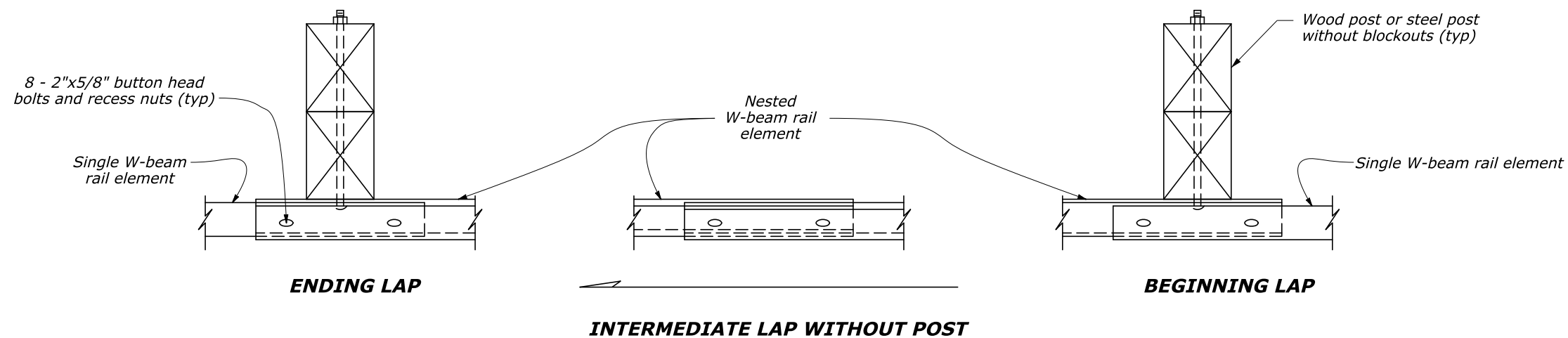


ELEVATION

NOTE:
1. 25'-0" rail lengths may be used to eliminate the intermediate lap without a post.



ELEVATION



NO SCALE

U.S. DEPARTMENT OF TRANSPORTATION FEDERAL HIGHWAY ADMINISTRATION EASTERN FEDERAL LANDS HIGHWAY DIVISION	
U.S. CUSTOMARY DETAIL	
G4 W BEAM GUARDRAIL PLACEMENT AT MINOR STRUCTURES AND PIPE CULVERTS	
DETAIL APPROVED FOR USE	DETAIL
APPROVED : MAY 2011 REVISED : SEPTEMBER 2014	E617-24