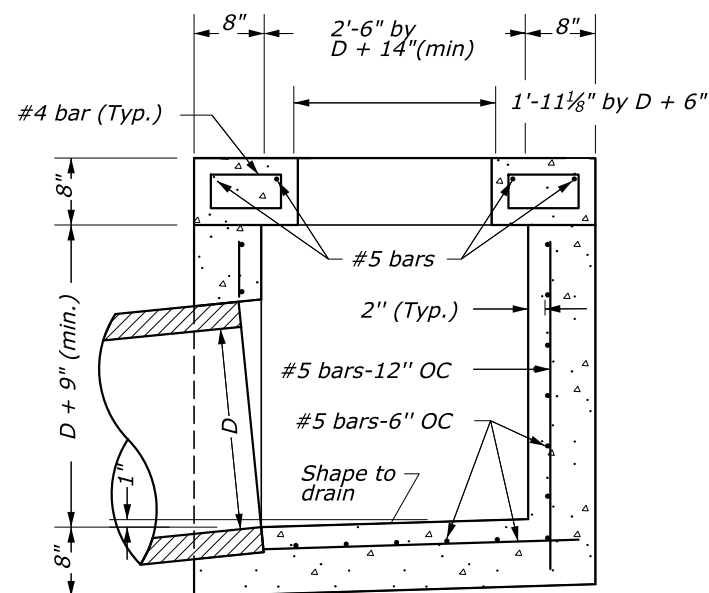


NOTES:

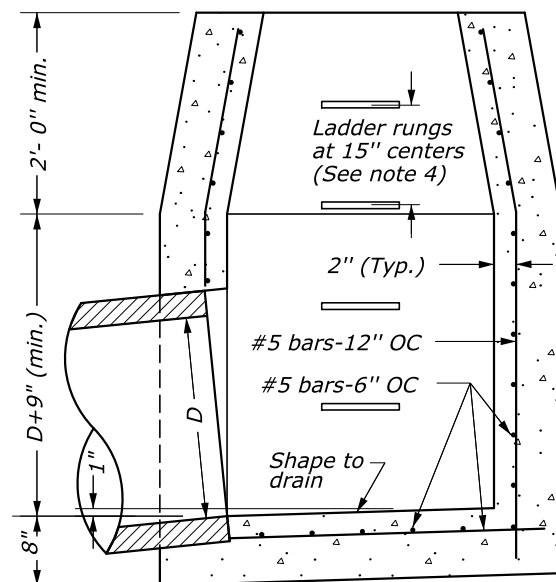
1. At the option of the Contractor walls less than 4 feet may be of either concrete block or concrete as shown.
2. Construct Type 6A-A inlets for pipes 24 inch and larger for "Limited Headroom", unless otherwise directed by the CO.
3. Construct inlets parallel to the roadway centerline and grade. For pipes on skew, adapt inlets as directed by the CO.
4. Construct ladder rungs of 3/4" round or 3/4" square steel or wrought iron where depth exceeds 4'-0".
5. For frames and gratings, minor variations in design and dimensions are permitted to allow manufacturers standards. All grates are to be bicycle safe.
6. Orient curved vanes toward direction of stormwater flow. In a sump condition, orientation of curved vanes can be in either direction. Contractor is responsible for correct grate orientation towards stormwater flow.
7. Construct Type 6A-6 metal frame and grating for 6" reveal, unless otherwise directed by the CO.
8. See Detail E604-9 for metal frame and grate, Type 6A-6 (curved vane grate) details.



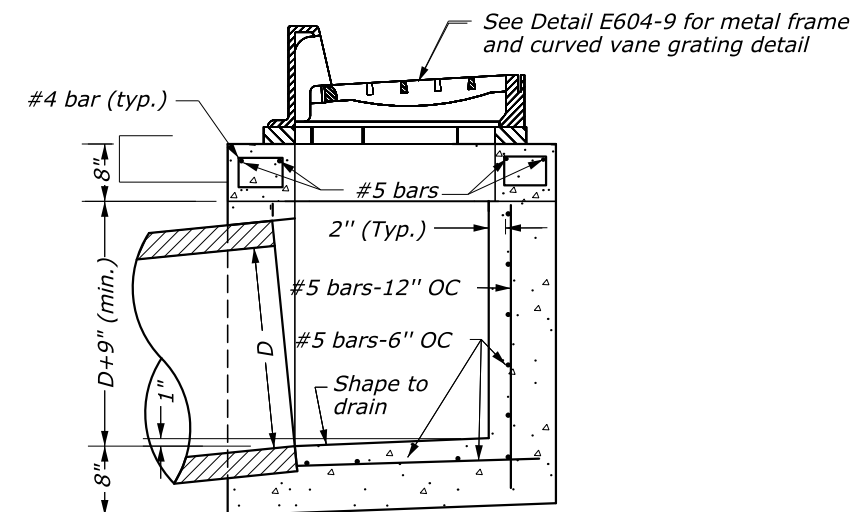
Limited headroom

SECTION A-A

TYPE 6A-A INLET
(for 24" or larger pipes)

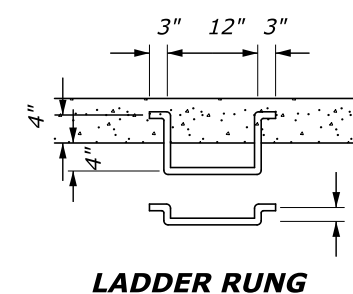


Ample headroom



SECTION A-A

TYPE 6A-6 INLET
(up to 24" pipes)



LADDER RUNG

NO SCALE

U.S. DEPARTMENT OF TRANSPORTATION FEDERAL HIGHWAY ADMINISTRATION EASTERN FEDERAL LANDS HIGHWAY DIVISION	
U.S. CUSTOMARY DETAIL	
INLET, TYPE 6A-6	
Sheet 1 of 2	
DETAIL APPROVED FOR USE	DETAIL
APPROVED: MAY 2011 REVISED: SEPTEMBER 2014	E604-09

01-Dec-2014 01:48 PM \$TIME\$ H:\Team_Folders\VIDU\VP_14_Detail_Review\ALL_FPH_DGN\60409_detail.dgn

