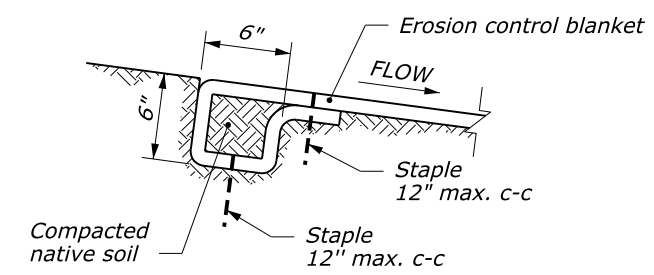
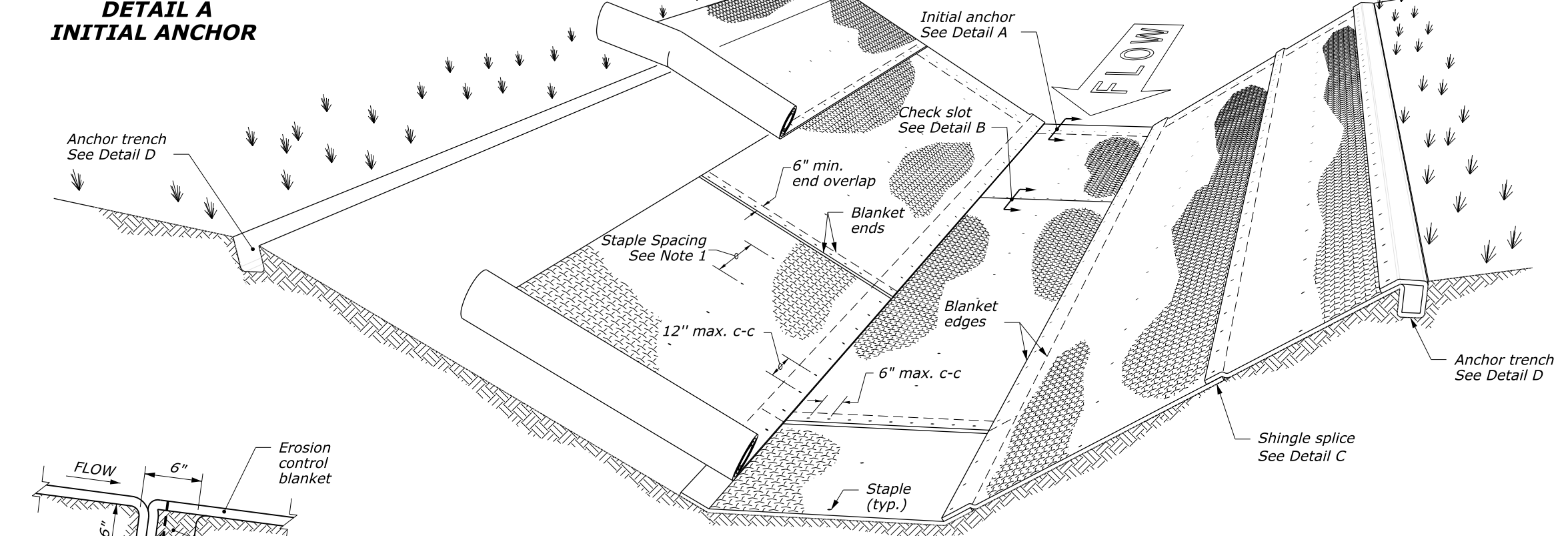


**NOTE:**

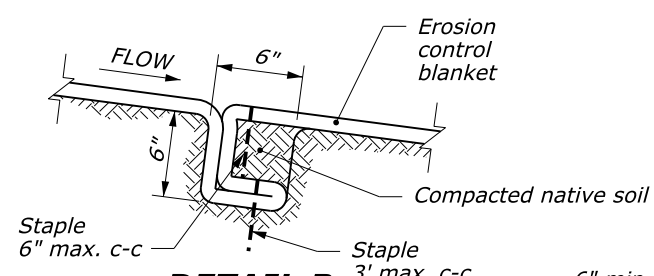
1. Install staples according to the manufacturer's recommendations.
2. Provide check slots according to the manufacturer's recommendations.
3. Roll ends may be spliced in a check slot.
4. Trapezoidal ditch shown. Similar details for a V-ditch.



**DETAIL A  
INITIAL ANCHOR**

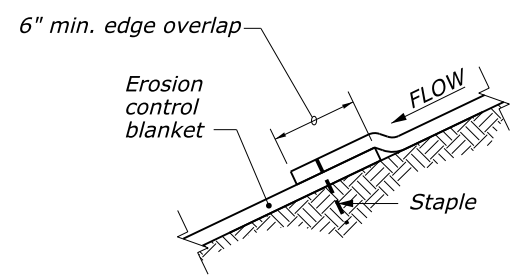


**PERSPECTIVE VIEW**

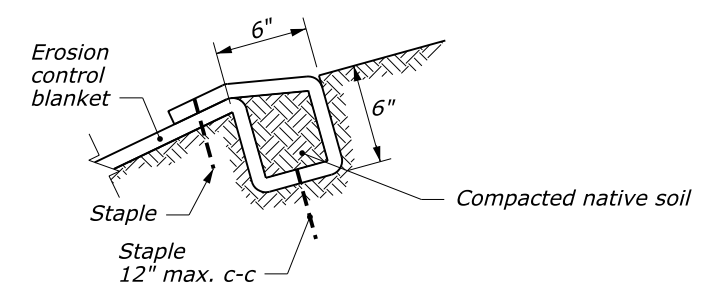


**DETAIL B  
CHECK SLOT**

See Note 2



**DETAIL C  
SHINGLE SPLICE**



**DETAIL D  
ANCHOR TRENCH**

User:

N:\CFL-DPT\Drawings\FP-14\FP14\_Details\C629-51.dgn

9/22/2014

U.S. DEPARTMENT OF TRANSPORTATION FEDERAL HIGHWAY ADMINISTRATION CENTRAL FEDERAL LANDS HIGHWAY DIVISION	
U.S. CUSTOMARY DETAIL <b>ROLLED EROSION CONTROL PRODUCT IN CHANNEL</b>	
DETAIL APPROVED FOR USE 01/2011	DETAIL
REVISED: 08/2014	C629-51

NO SCALE

## NOTES TO THE DESIGNER

Last Updated: August 2014

---

### General Information

1. **Appropriate Applications.** Erosion control blankets may be used for temporary or permanent soil stabilization in drainage channels. Blankets lessen the impact of soil erosion due to wind or water and provide a mulching layer for the establishment of vegetation. Erosion control blankets may be made of a variety of materials, such as jute, straw, or excelsior, providing variable longevity.
2. **Limitations.**
  - Erosion control blankets are typically used in ditches with velocities less than 9 ft/s
  - Erosion control blankets may be used under riprap check dams on steep slopes
3. **Layout Guidance.**
  - Show locations of matting in the erosion and sediment control plans. Use the pattern MAT in the cell library EC\_X30.cel.

---

### Applicable SCRs

1. Section 629:  
<http://www.cflhd.gov/resources/design/constructspecs/scr/fp14/documents/S629-14.docx>

---

### Typical Pay Item Used

- 62901-[0100 through 1400] Rolled erosion control product, type xx [SQYD]  
OR
- 62902-[0100 through 1400] Rolled erosion control product, type xx [ACRE]

---

### Updates

January 2011

- New Detail drawing

August 2014

- Updated for FP-14
- Updated border to FLH Standard