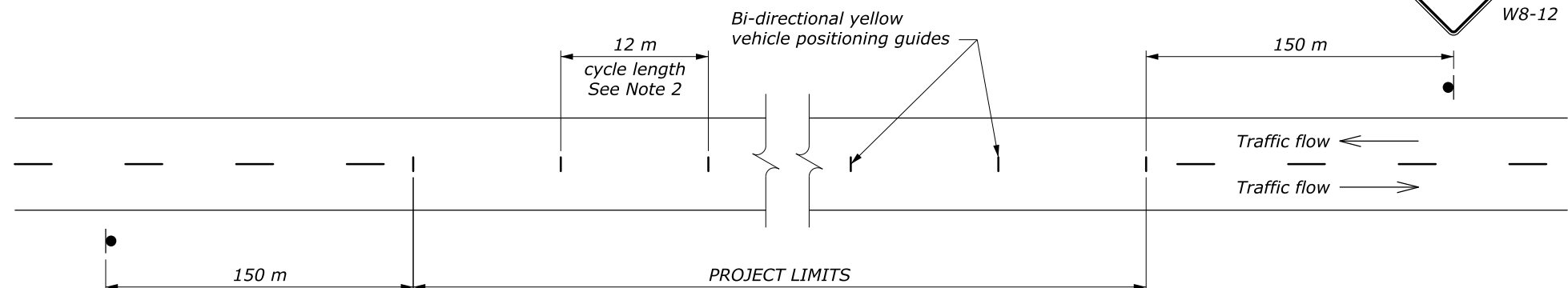
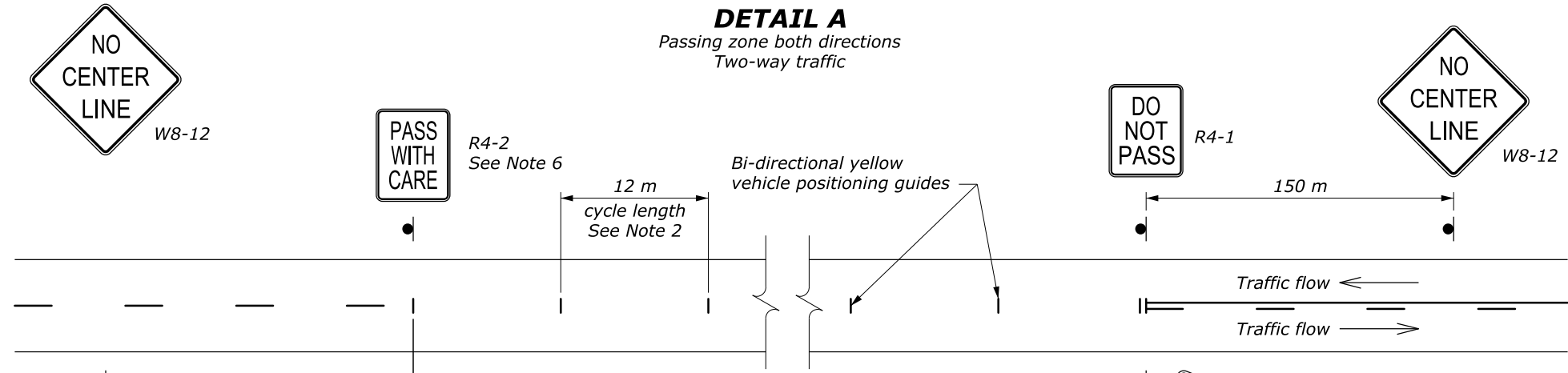


**NOTE:**

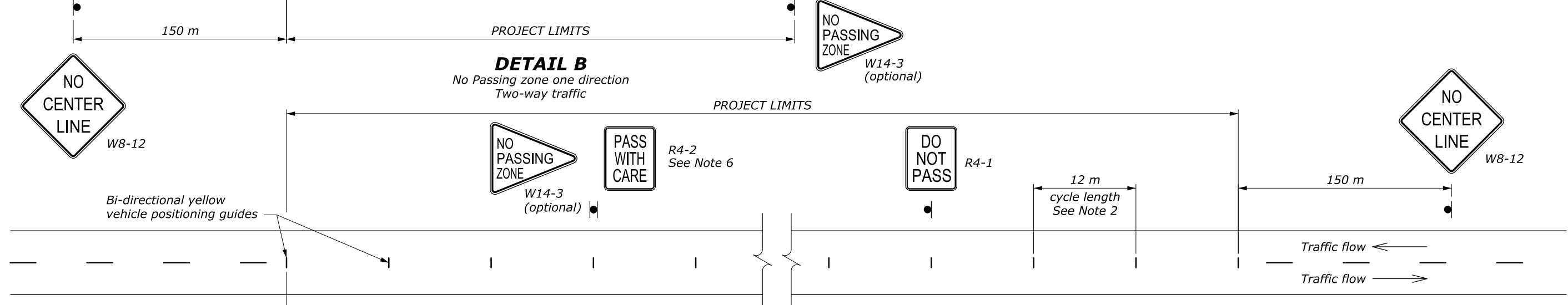
1. The pavement on two- or three-lane roads may remain unmarked up to 14 days when providing signs according to this standard. Optionally use the vehicle positioning guides to provide additional delineation.
2. On curves with radius less than 150 m, reduce cycle length to 6 m.
3. Use permanent markings plan to determine no passing zones for each direction of travel.
4. Repeat R4-1 at 1.5 km intervals.
5. Repeat W8-12 after each major intersection and every 3 km for temporary traffic control zones greater than 5 km long.
6. Use the "PASS WITH CARE" (R4-2) sign at the downstream end of a no-passing zone only if a "DO NOT PASS" (R4-1) sign has been installed at the upstream end of the zone.



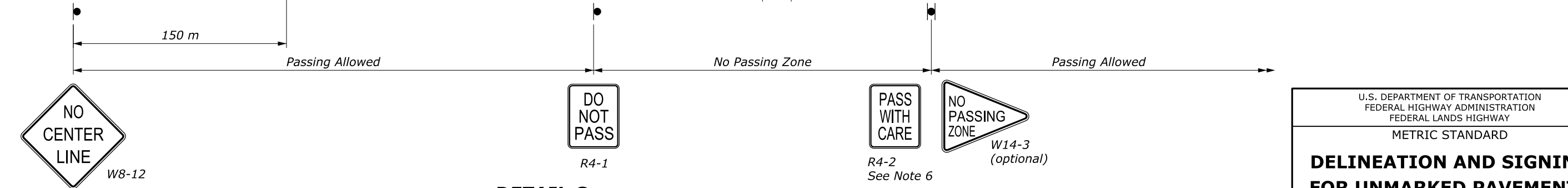
**DETAIL A**  
 Passing zone both directions  
 Two-way traffic



**DETAIL B**  
 No Passing zone one direction  
 Two-way traffic



**DETAIL C**  
 No Passing zone both directions  
 Two-way traffic



U.S. DEPARTMENT OF TRANSPORTATION  
 FEDERAL HIGHWAY ADMINISTRATION  
 FEDERAL LANDS HIGHWAY  
 METRIC STANDARD

**DELINEATION AND SIGNING  
 FOR UNMARKED PAVEMENTS**

STANDARD APPROVED FOR USE 6/1998  
 REVISD: 6/2005  
 DRAFT: 8/2013

STANDARD  
 M635-3

NO SCALE