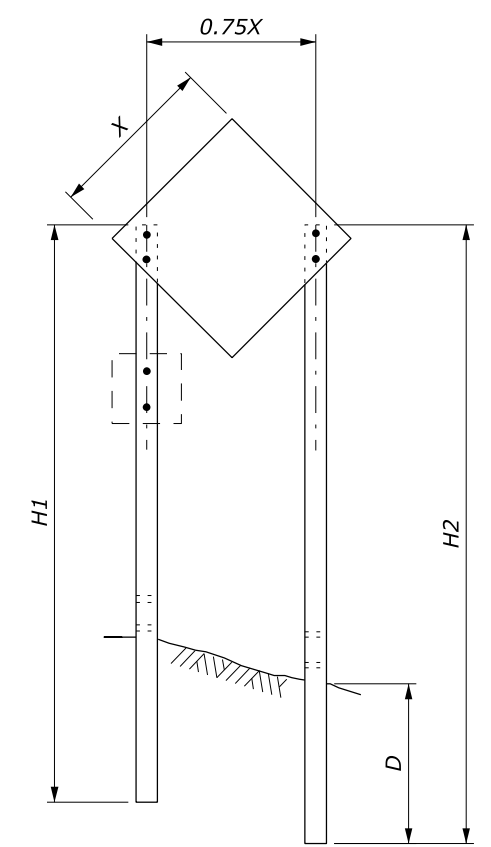
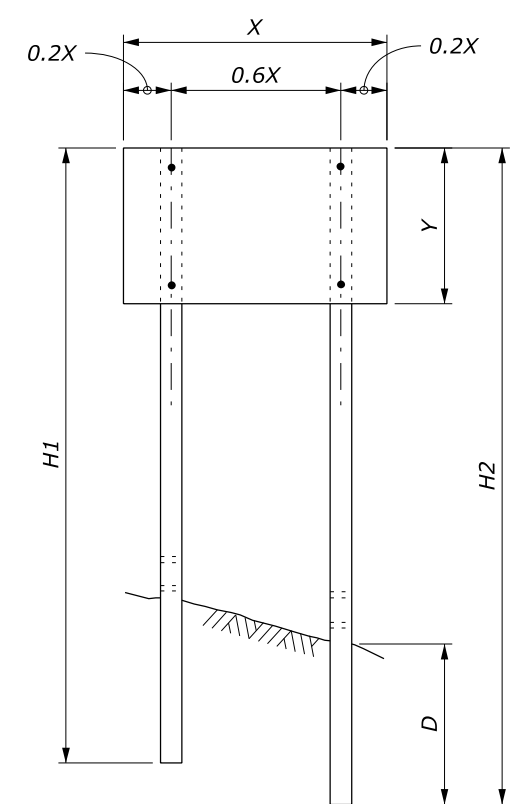


**SINGLE POST SIGN**



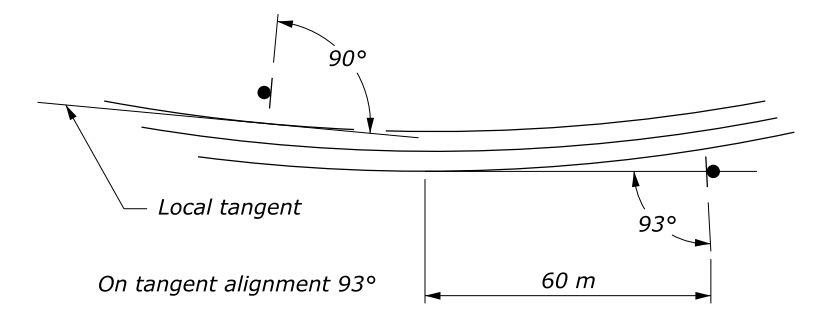
**TWO POST SIGN**



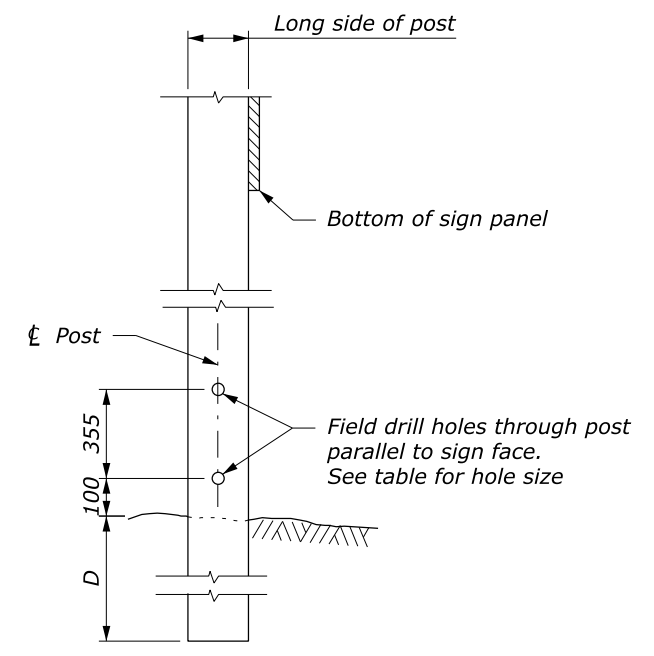
**NOTE:**

1. Attach sign panels with a minimum of 2 - 6.25 mm Ø bolts per post.
2. H1 and H2 = Overall post length. Select post lengths to fit field conditions.
3. D = Post embedment depth for average soil conditions.
4. In areas where lateral distance is limited, a minimum lateral offset of 600 mm may be used. In areas with curbs, a minimum lateral distance of 300 mm behind the face of the curb may be used.
5. In pedestrian locations, or in areas with obstructed views, use 2.1 m minimum mounting height for main sign and 1.8 m minimum mounting height for secondary sign.
6. Use 2.1 m minimum spacing between posts for sign posts 150 mm x 150 mm or larger.
7. State standards may be used as an alternative if approved by the CO.
8. Dimensions without units are millimeters.

WOOD POST SELECTION TABLE					
WIDTH "X"	AREA (m <sup>2</sup> )	NUMBER OF POSTS	POST SIZE (mm)	D (mm)	HOLE SIZE (mm)
Diamond ≤ 915 mm Other Shapes ≤ 1220 mm	< 0.9	1	100 x 100	900	0
		1	100 x 150	1200	40
Diamond ≤ 1220 mm	0.9 - 1.9	1	150 x 150	1200	50
Diamond ≤ 1220 mm Other Shapes ≤ 3.7 m	0.9 - 1.9	2	100 x 100	900	0
		2	100 x 150	1200	40
> 4 m	4.6 - 6.0	2	150 x 150	1200	50
3.7 m - 4.9 m	4.6 - 6.0	3	100 x 150	1200	40
> 5 m	6.0 - 8.9	4	100 x 150	1200	50
> 9 m	6.0 - 8.9	3	150 x 150	1200	50



**SIGN INSTALLATION ANGLE**



**POST DETAIL**

U.S. DEPARTMENT OF TRANSPORTATION  
FEDERAL HIGHWAY ADMINISTRATION  
FEDERAL LANDS HIGHWAY

METRIC STANDARD

**TEMPORARY TRAFFIC CONTROL  
SIGN INSTALLATION  
WOOD POSTS**

STANDARD APPROVED FOR USE 6/2005

REVISOR: 9/2014

STANDARD M635-14

NO SCALE