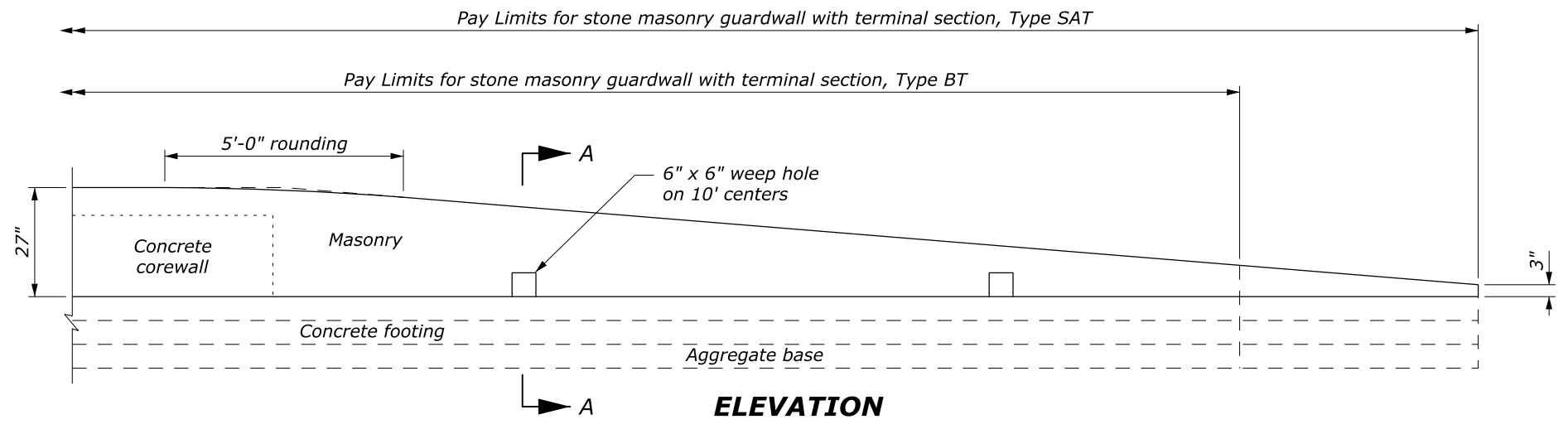


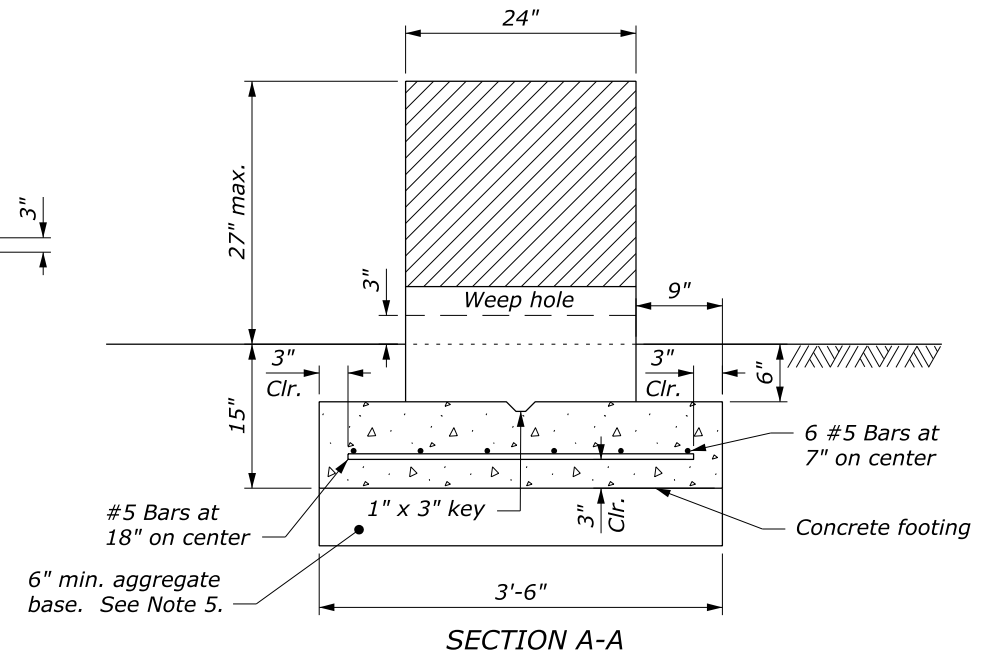
PLAN

NOTE:

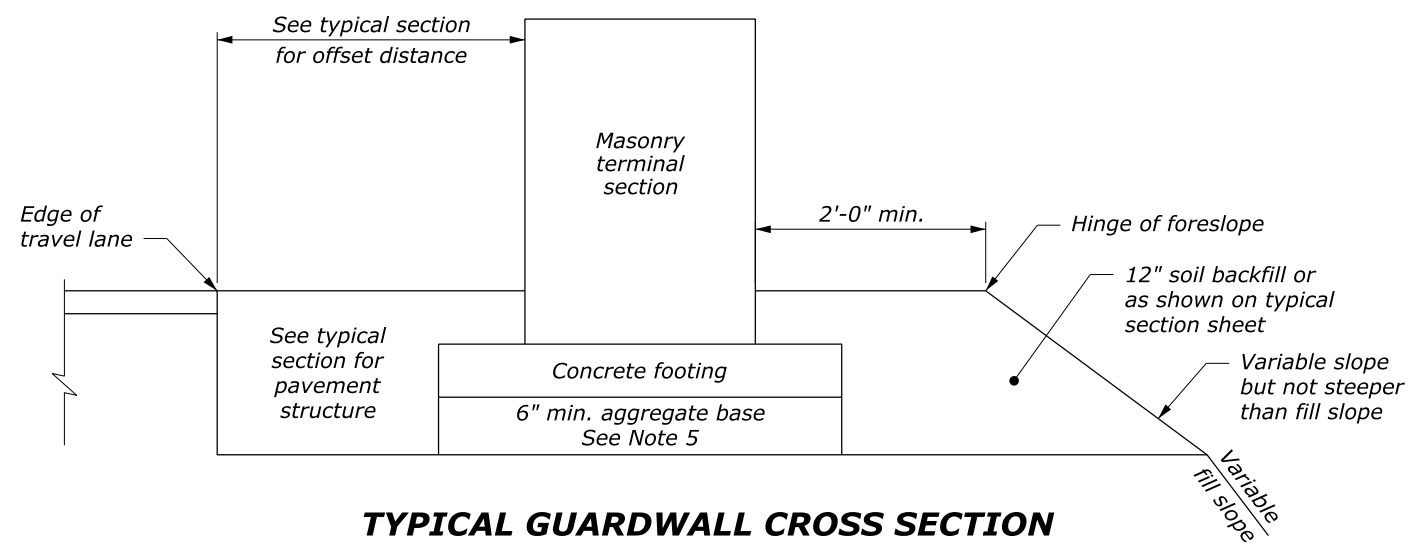
1. Use the Type SAT (Stand alone terminal) terminal section or the Type BT (Buried terminal) terminal section as specified.
2. For the Type BT terminal section delete the last 5 feet of the Type SAT terminal section. See Standard 204-1, Earth Berm for Roadside Barrier Terminal Section, for construction of the earth berm.
3. Extend the fill widening a minimum of 5 feet behind the guardwall for the Type SAT terminal section, unless otherwise directed.
4. The plan view guardwall flare indicates the minimum length and rate required. Flare the guardwall to locate the terminal section outside the clear zone as directed by the CO.
5. The depth of base may be less than 6 inches as directed by the CO, when the foundation is on either rock fill or solid rock.
6. Use the appropriate flare rate in guardwall layout to locate the guardwall terminal section outside the clear zone as directed by the CO.



ELEVATION



SECTION A-A



TYPICAL GUARDWALL CROSS SECTION

GUARDWALL FLARE RATE TABLE			
Design Speed (mph)	Shy Line Offset (ft)	Flare Rate (a:b)	
		Inside Shy Line	Outside Shy Line
60	8.0	26:1	18:1
50	6.5	21:1	14:1
40	4.5	16:1	10:1
30 or less	3.5	13:1	8:1

NO SCALE

U.S. DEPARTMENT OF TRANSPORTATION
 FEDERAL HIGHWAY ADMINISTRATION
 FEDERAL LANDS HIGHWAY

U.S. CUSTOMARY STANDARD

**STONE MASONRY GUARDWALL
 TERMINAL SECTIONS
 TYPE SAT AND TYPE BT**

STANDARD APPROVED FOR USE 3/1990
 REVISED: 4/1994 6/2005

STANDARD
 620-3