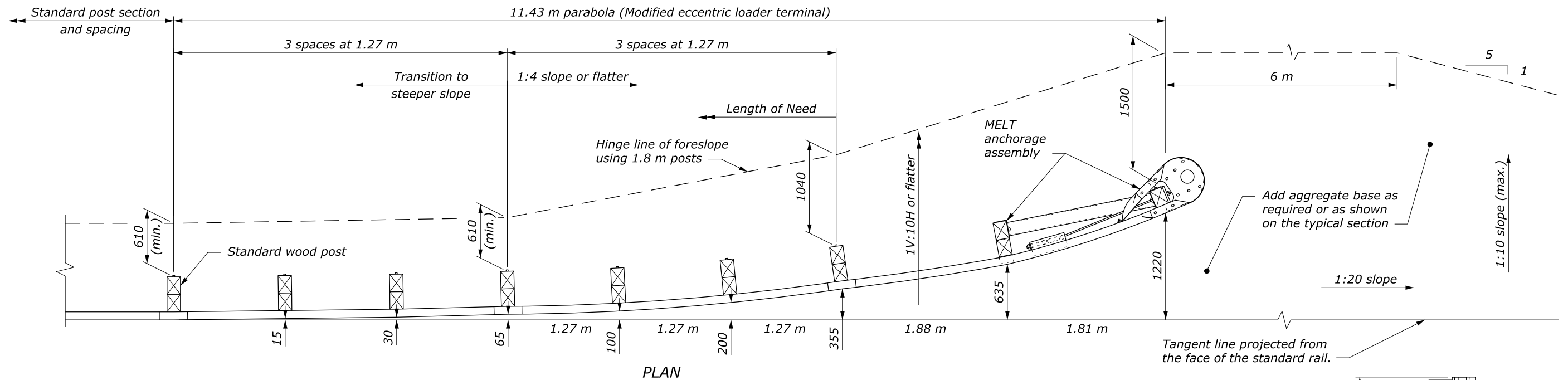
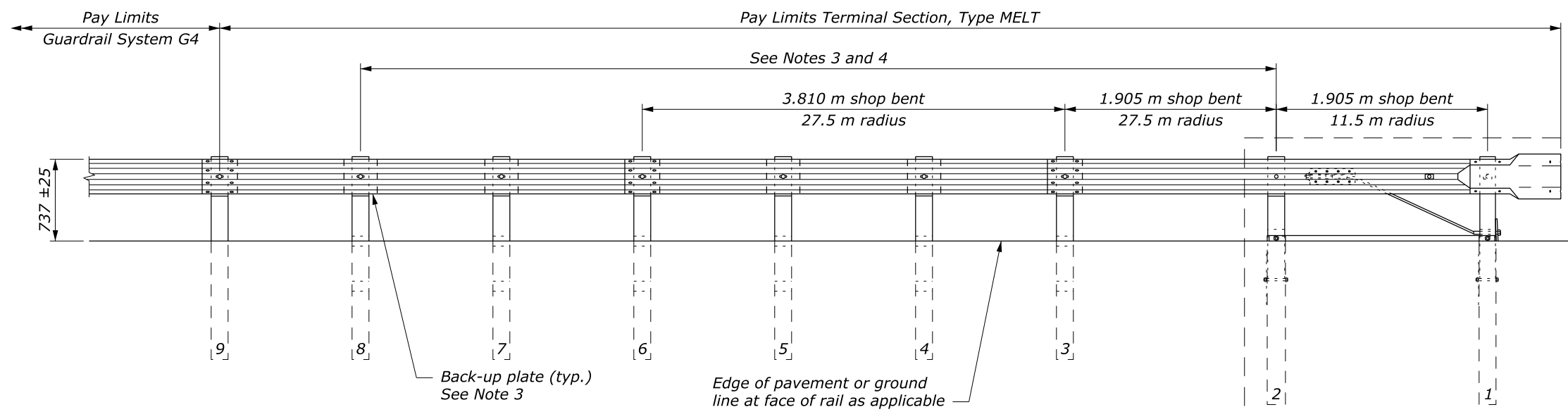


NOTE:

1. Do not use terminal where speeds are in excess of 70 kph.
2. Extend bolts through the post and block, but not through the W beam rail for Posts #2-8. Extend bolts through the W-Beam rail for Posts #1 and #9.
3. Use Back-up plates on posts #4, 5, 7, and 8.
4. Use Shelf angle on post #2.
5. Dimensions without units are millimeters.

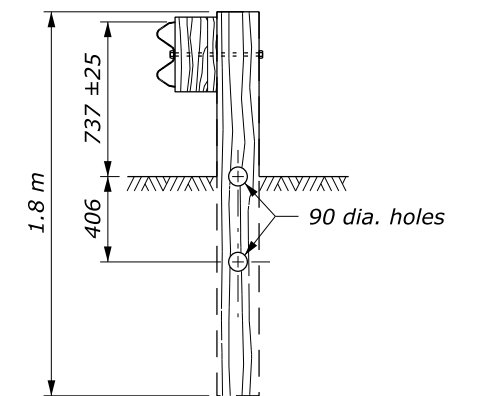


PLAN



ELEVATION

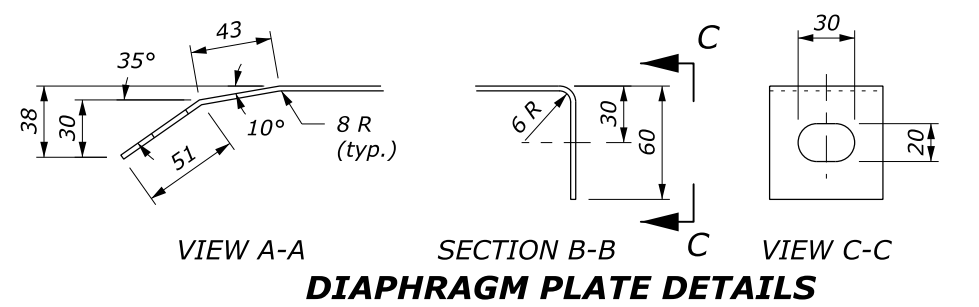
**APPROACH & DEPARTURE FLARE
WITH MODIFIED ECCENTRIC LOADER TERMINAL**



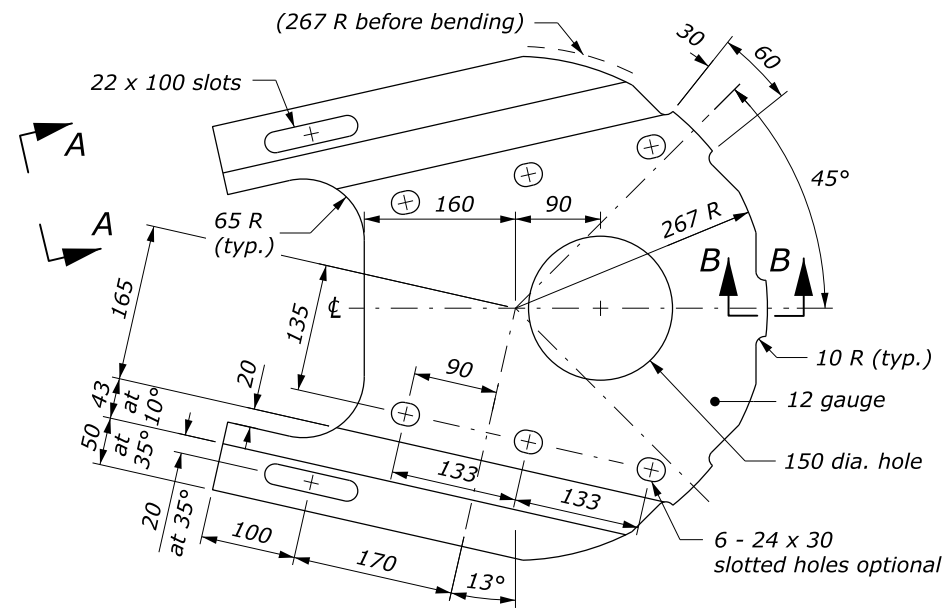
**BREAKAWAY LINE
POST AND BLOCK
POSTS #3 - #8**

U.S. DEPARTMENT OF TRANSPORTATION FEDERAL HIGHWAY ADMINISTRATION FEDERAL LANDS HIGHWAY	
METRIC STANDARD G4 W-BEAM GUARDRAIL MODIFIED ECCENTRIC LOADER TERMINAL, TYPE MELT Sheet 1 of 2	
STANDARD APPROVED FOR USE 3/1996	STANDARD
REVISED: 12/1998 6/2005 DRAFT: 4/2016	M617-12

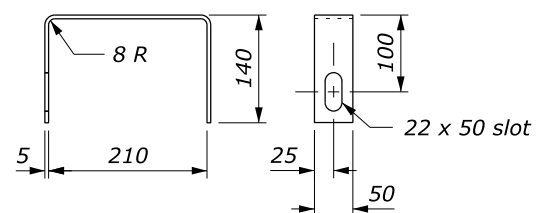
NO SCALE



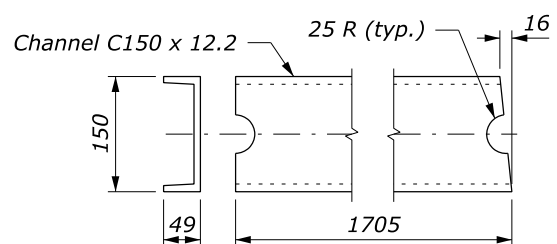
DIAPHRAGM PLATE DETAILS



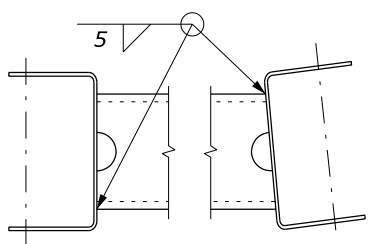
DIAPHRAGM PLATE
(2 required each terminal)



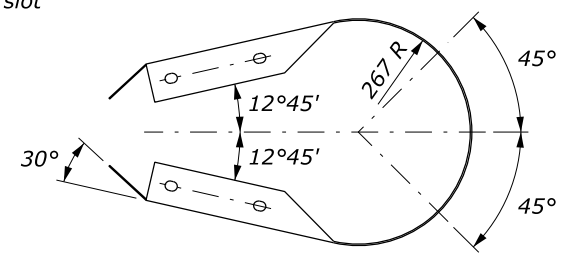
YOKE DETAILS



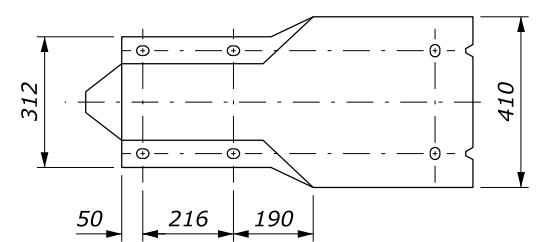
STRUT DETAILS



STRUT AND YOKE ASSEMBLY

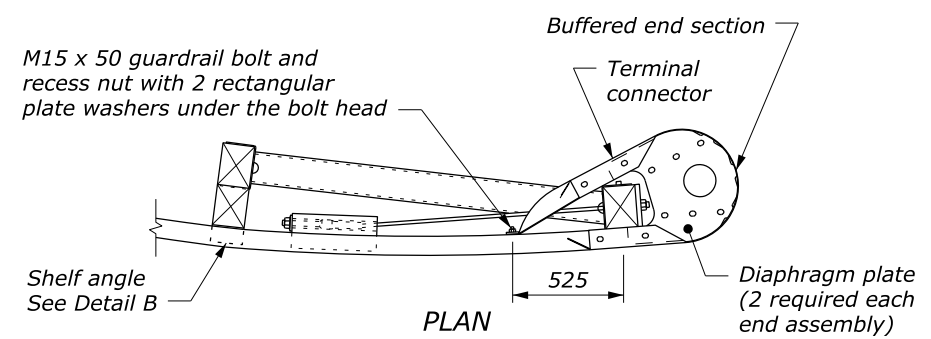


PLAN

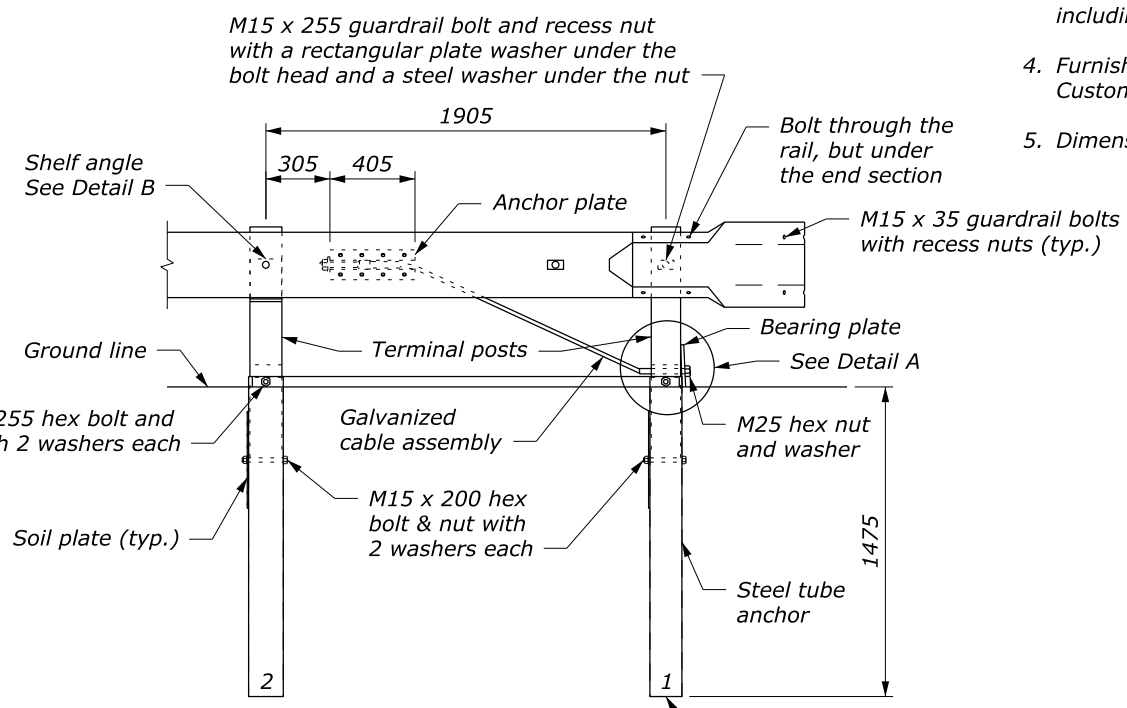


ELEVATION

BUFFERED END SECTION

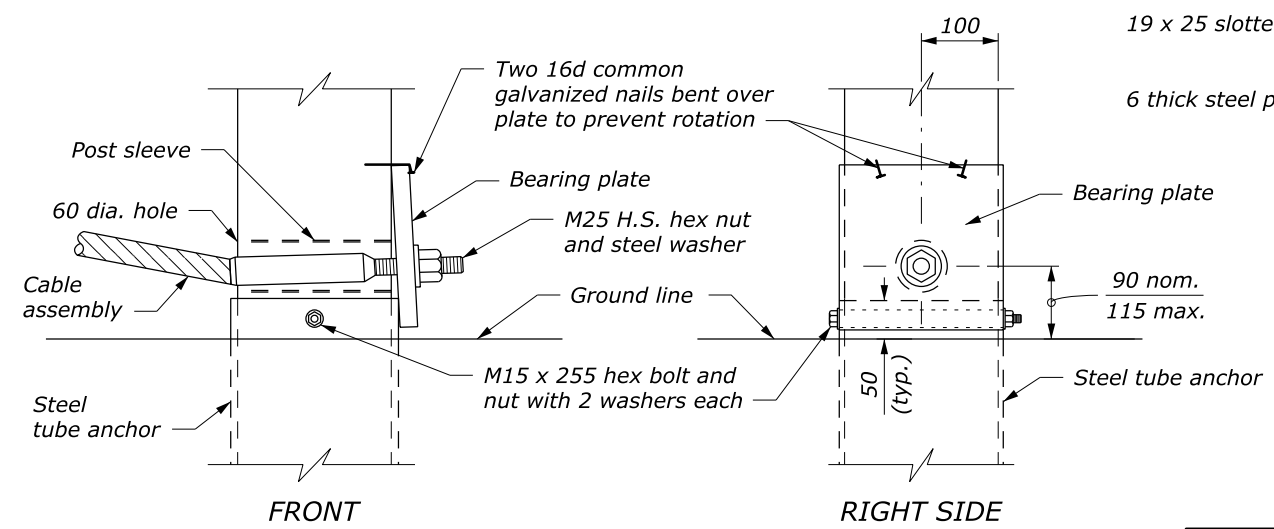


PLAN



ELEVATION

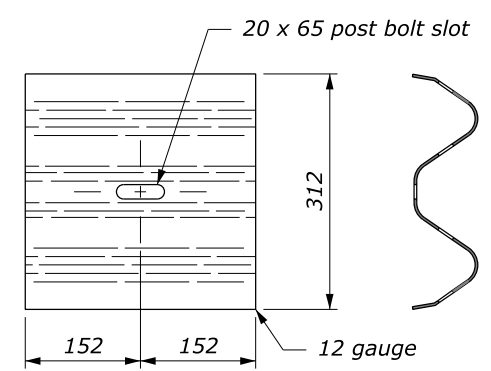
ANCHORAGE ASSEMBLY



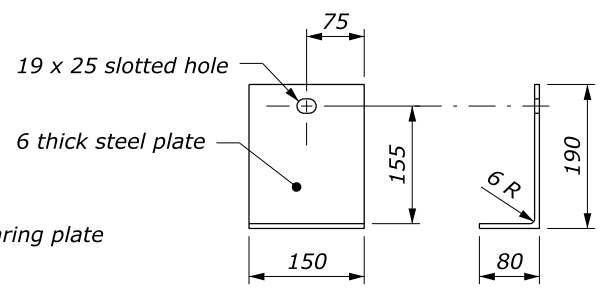
FRONT

RIGHT SIDE

DETAIL A
POST #1 ASSEMBLY



W-BEAM BACK UP PLATE
POSTS #4, 5, 7, & 8



DETAIL B
POST #2 SHELF ANGLE

NOTE:

1. See Standard M617-15 for other details.
2. Extend bolts through the post and block, but not through the W-Beam rail for Posts #2-8. Extend bolts through the W-Beam rail for Posts #1 and #9.
3. Dimensional tolerances not shown or implied are intended to be those consistent with the proper functioning of the part, including its appearance, and accepted manufacturing practices.
4. Furnish hardware in metric sizes shown. Equivalent U.S. Customary sizes may be used when metric sizes are unavailable.
5. Dimensions without units are millimeters.

U.S. DEPARTMENT OF TRANSPORTATION
FEDERAL HIGHWAY ADMINISTRATION
FEDERAL LANDS HIGHWAY

METRIC STANDARD
**G4 W-BEAM GUARDRAIL
MODIFIED ECCENTRIC LOADER
TERMINAL, TYPE MELT**
Sheet 2 of 2

STANDARD APPROVED FOR USE 3/1996
REVISED: 12/1998 6/2005
DRAFT: 5/2014

STANDARD
M617-12

NO SCALE

c:\myfiles\pw_production\dms67487\Std617-12.dgn [Metric 2]
13 April 2016 7:12 AM