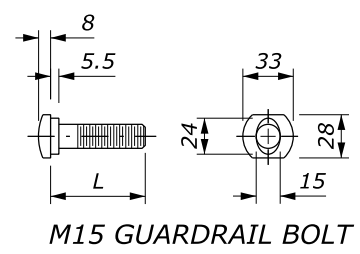
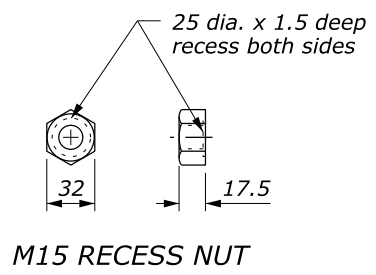


- NOTE:**
- When encountering impenetrable material, see Standards M617-13 or M617-24.
 - See Special Contract Requirements when 2 m or longer posts are specified.
 - See Special Contract Requirements when the alternative hole arrangement is specified.
 - Install reflector tab between post bolt and rail, every fourth post. Alternate reflector tab shapes are acceptable.
 - Modified block may be wood, plastic, or composite material. Use consistent material throughout the length of guardrail run.
 - Dimensional tolerances not shown or implied are intended to be those consistent with the proper functioning of the part, including its appearance, and accepted manufacturing practices.
 - Furnish hardware in the metric sizes shown. Equivalent US Customary sizes may be used when metric sizes are unavailable.
 - Dimensions without units are millimeters.

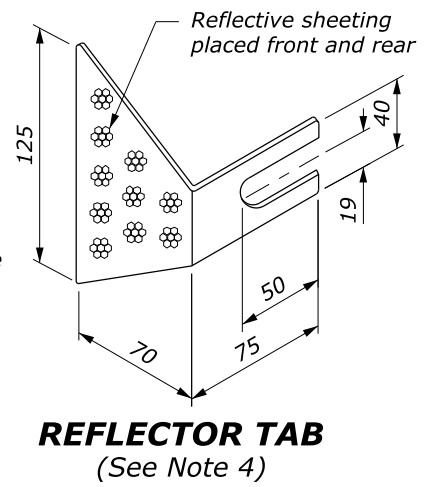
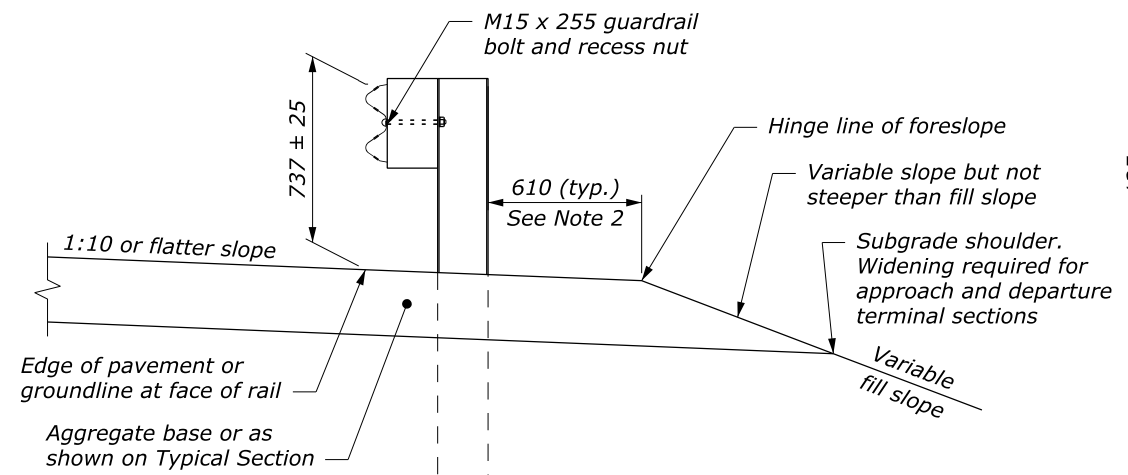
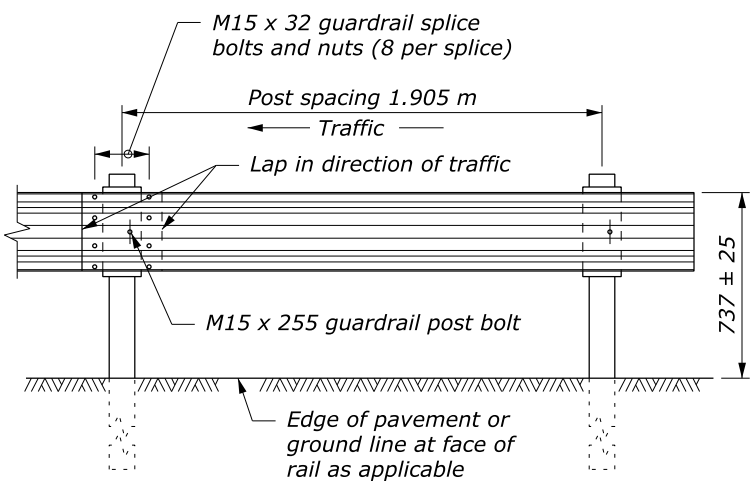
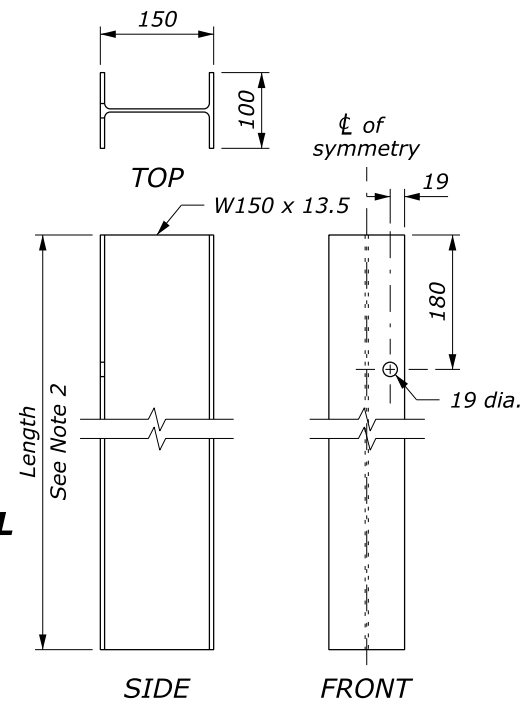
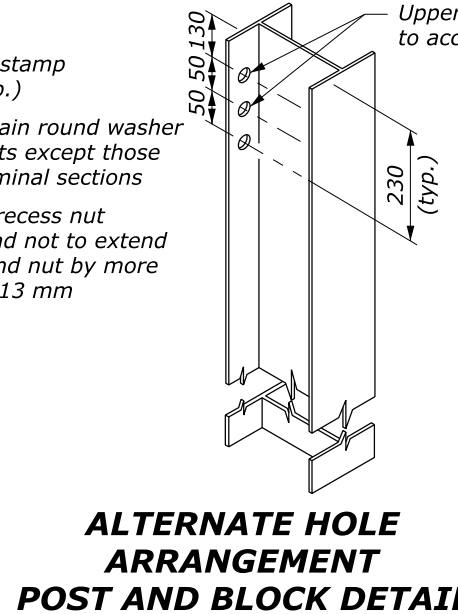
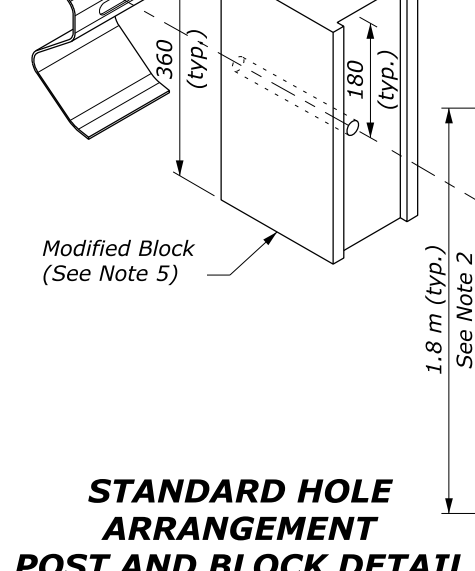
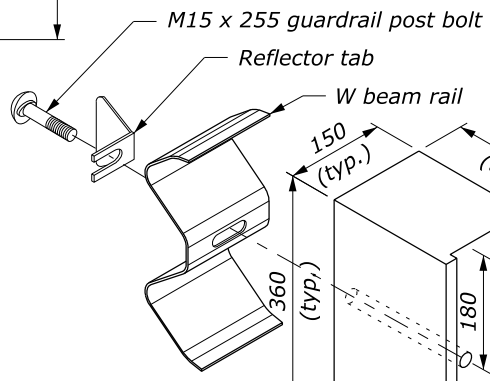
W BEAM RAIL



L	Thread Length
32	30 minimum
50	45 minimum
255	100 minimum
460	100 minimum
640	100 minimum



GUARDRAIL BOLT AND RECESS NUT



NO SCALE

U.S. DEPARTMENT OF TRANSPORTATION
 FEDERAL HIGHWAY ADMINISTRATION
 FEDERAL LANDS HIGHWAY
 METRIC STANDARD

G4 W-BEAM GUARDRAIL STEEL POSTS

STANDARD APPROVED FOR USE 3/1996
 REVISED: 6/1997 12/1998 6/2005
 DRAFT: 10/2013

STANDARD M617-11