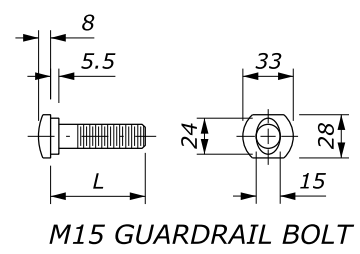
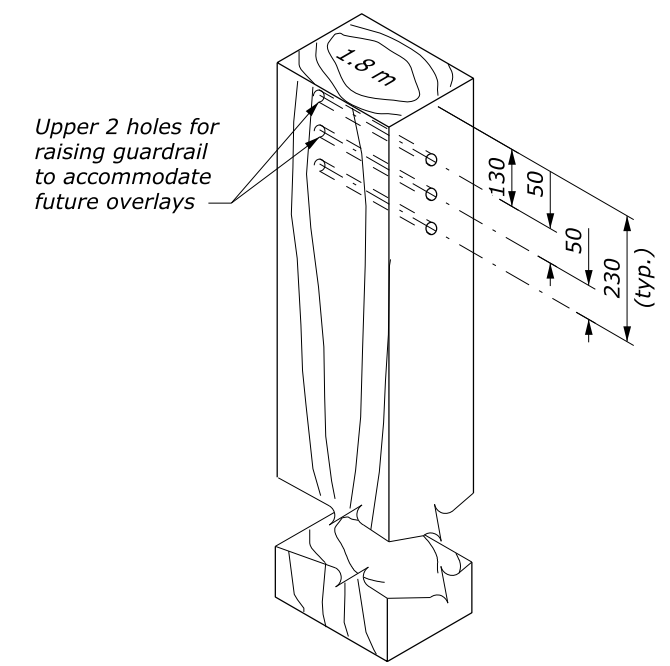
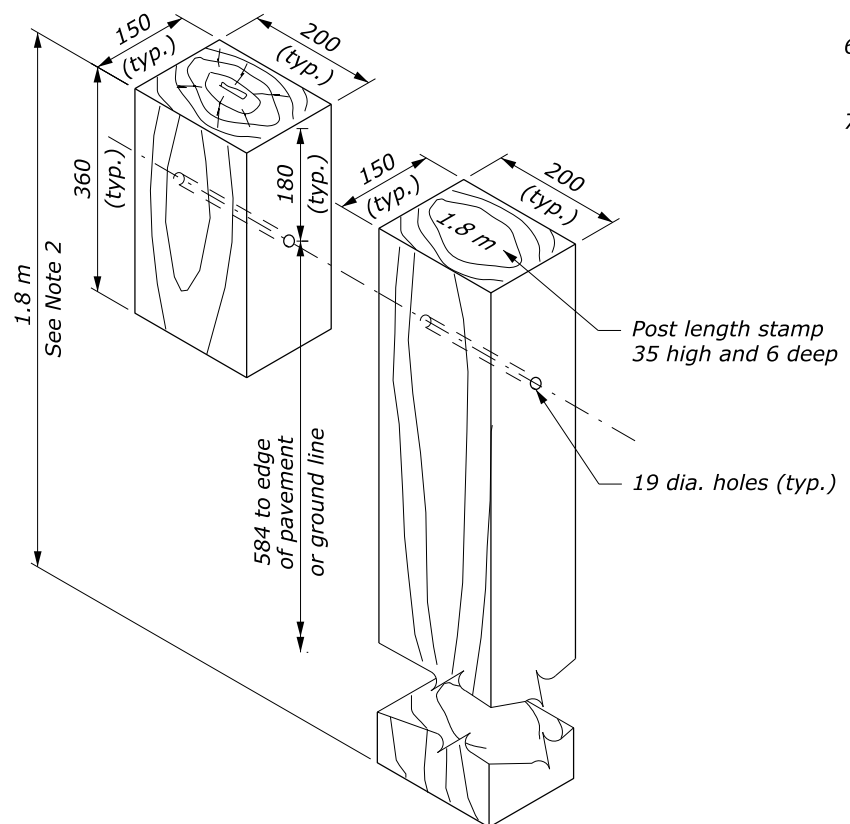
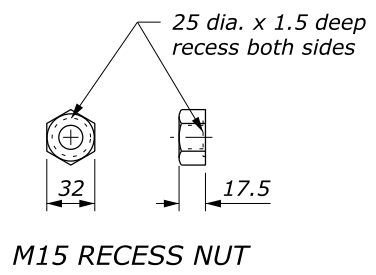


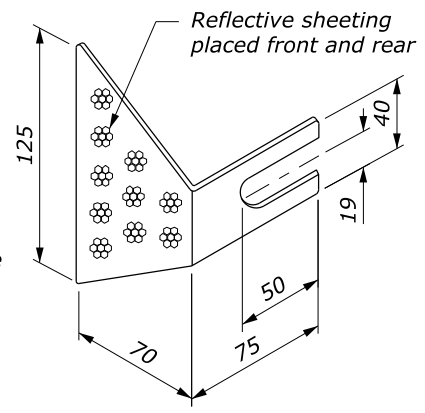
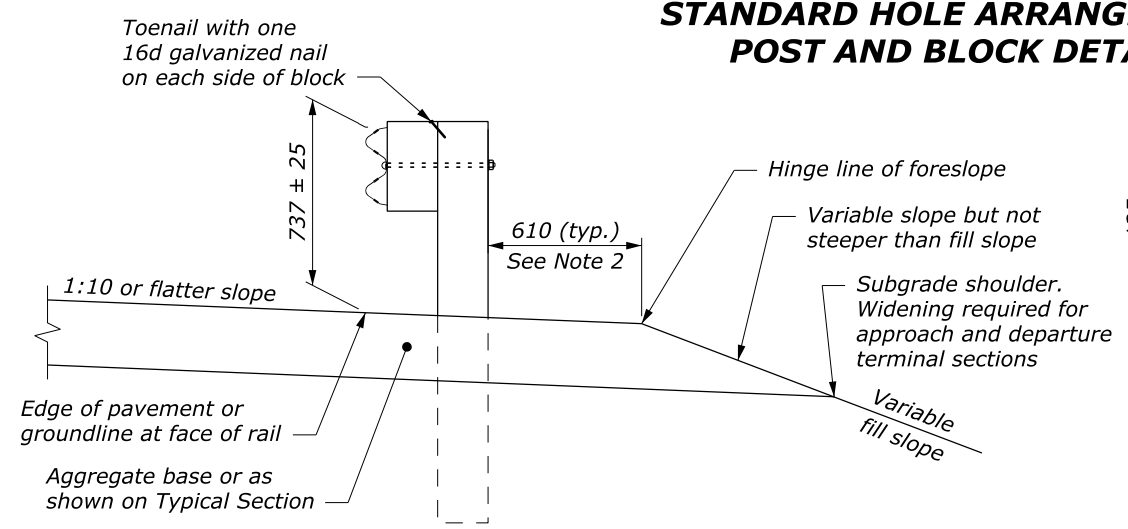
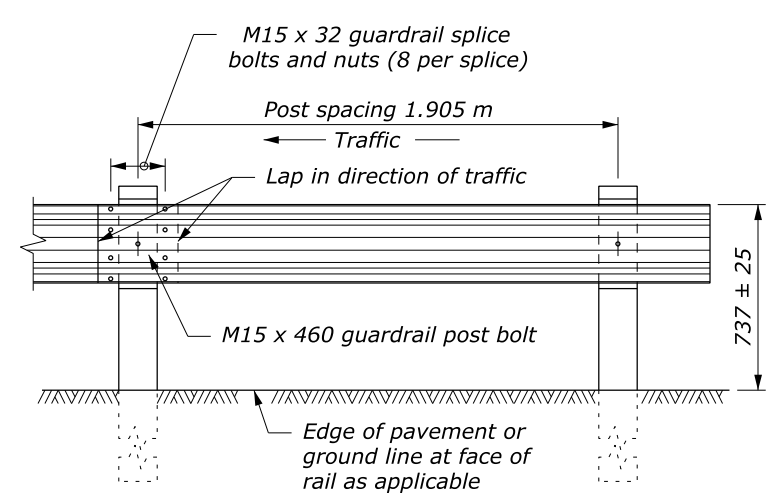
- NOTE:**
- When encountering impenetrable material, see Standards M617-13 or M617-24.
  - See Special Contract Requirements when 2 m or longer posts are specified.
  - See Special Contract Requirements when the alternative hole arrangement is specified.
  - Install reflector tab between post bolt and rail, every fourth post. Alternate reflector tab shapes are acceptable.
  - Dimensional tolerances not shown or implied are intended to be those consistent with the proper functioning of the part, including its appearance, and accepted manufacturing practices.
  - Furnish hardware in the metric sizes shown. Equivalent US Customary sizes may be used when metric sizes are unavailable.
  - Dimensions without units are millimeters.



L	Thread Length
32	30 minimum
50	45 minimum
255	100 minimum
460	100 minimum
640	100 minimum



**GUARDRAIL BOLT AND RECESS NUT**



NO SCALE

U.S. DEPARTMENT OF TRANSPORTATION  
FEDERAL HIGHWAY ADMINISTRATION  
FEDERAL LANDS HIGHWAY

METRIC STANDARD

**G4 W-BEAM GUARDRAIL  
WOOD POSTS**

STANDARD APPROVED FOR USE 3/1996  
REVISED: 8/1997 6/2005  
DRAFT: 10/2013

STANDARD  
M617-10