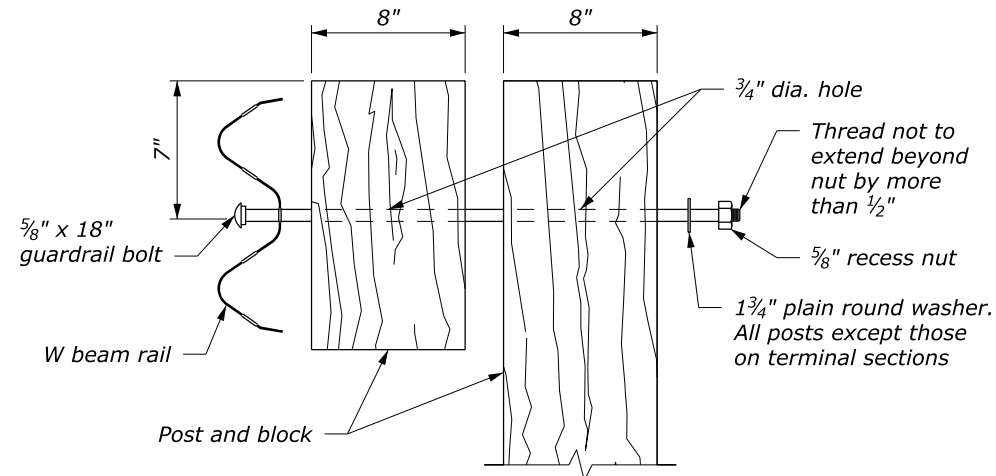
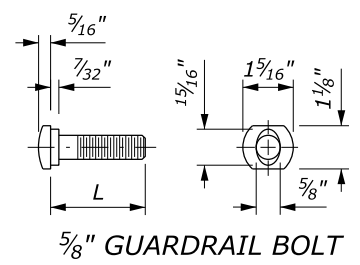
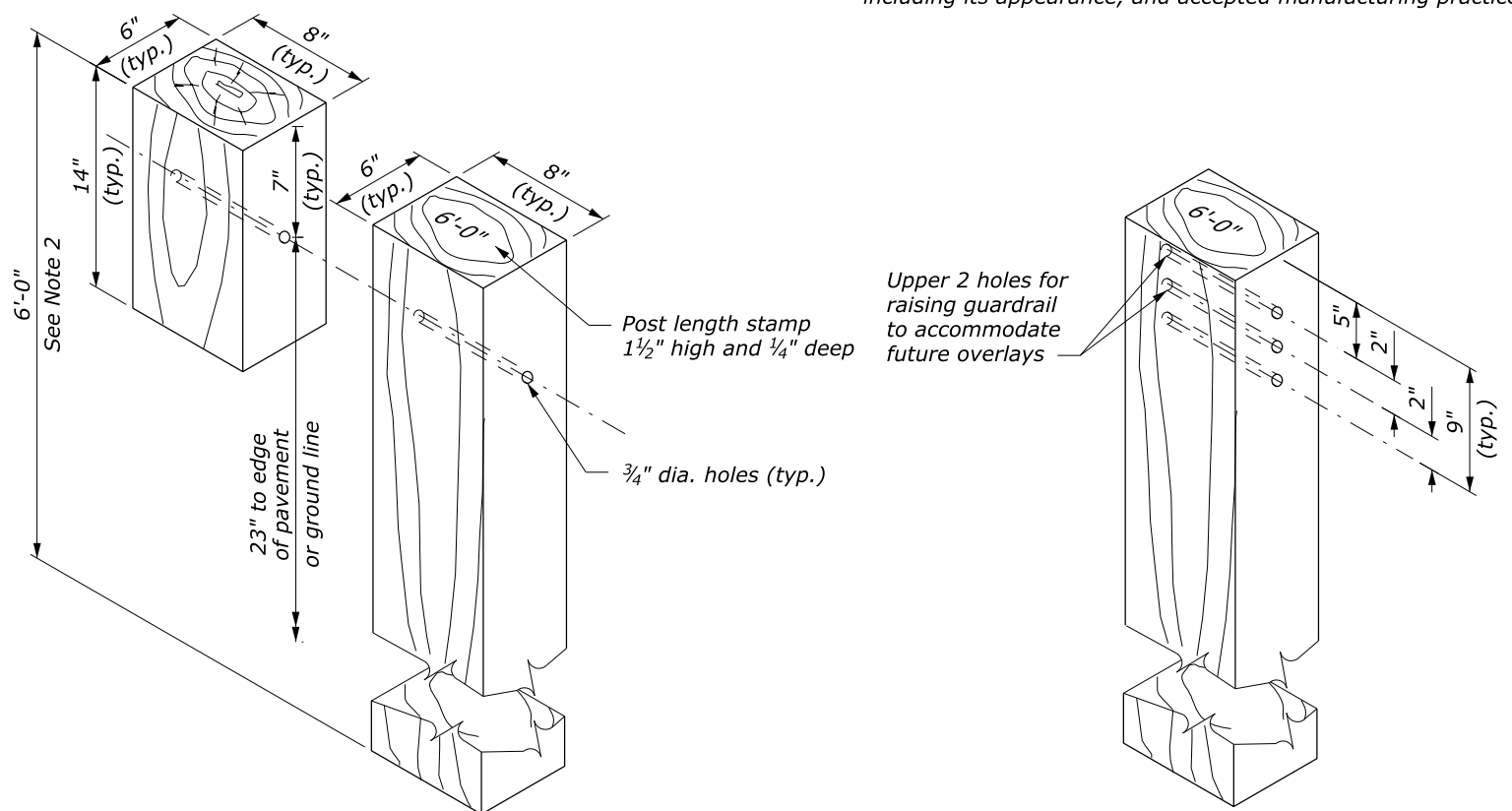


W BEAM RAIL

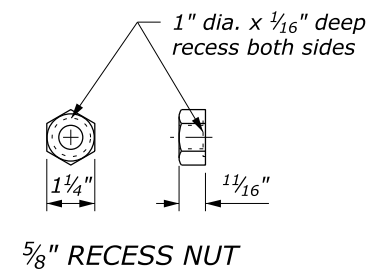


NOTE:

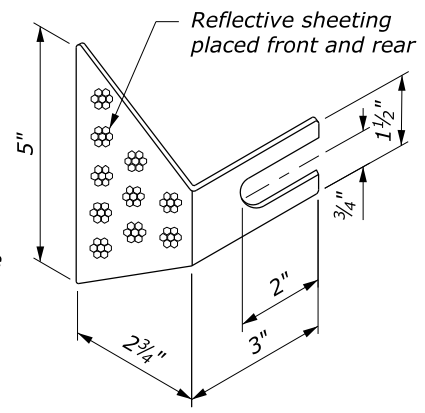
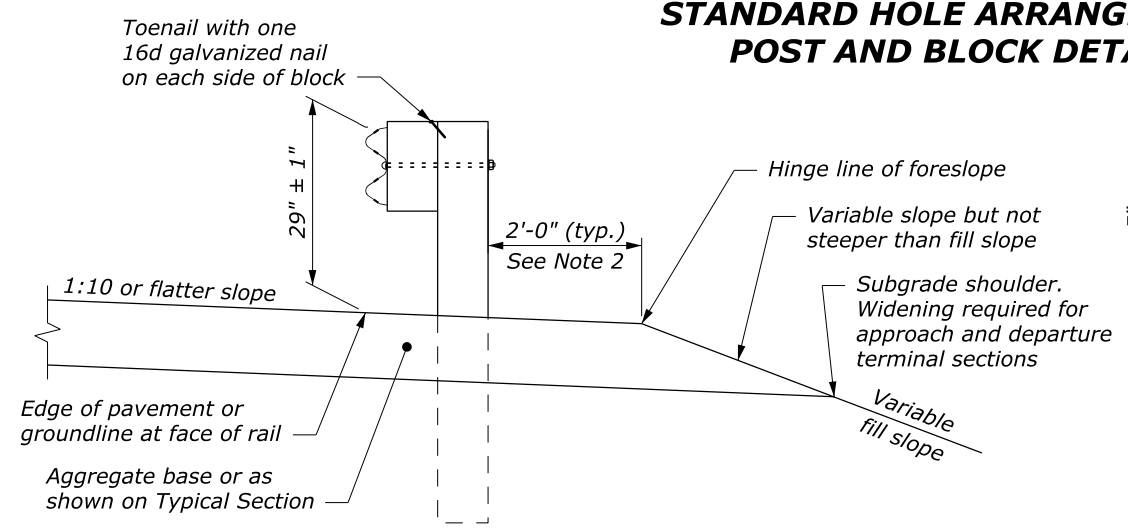
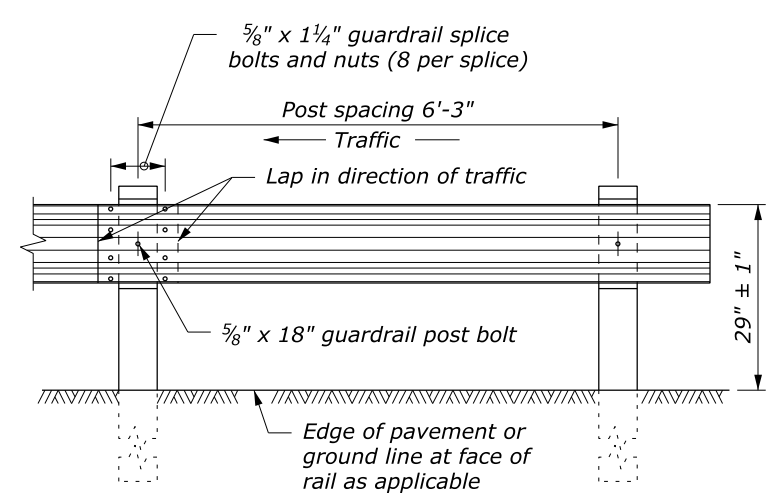
1. When encountering impenetrable material, see Standards 617-13 or 617-24.
2. See Special Contract Requirements when 7 foot or longer posts are specified.
3. See Special Contract Requirements when the alternative hole arrangement is specified.
4. Install reflector tab between post bolt and rail, every fourth post. Alternate reflector tab shapes are acceptable.
5. Dimensional tolerances not shown or implied are intended to be those consistent with the proper functioning of the part, including its appearance, and accepted manufacturing practices.



L	Thread Length
1 1/4"	1 1/8" minimum
2"	1 3/4" minimum
10"	4" minimum
18"	4" minimum
25"	4" minimum



GUARDRAIL BOLT AND RECESS NUT



NO SCALE

U.S. DEPARTMENT OF TRANSPORTATION
FEDERAL HIGHWAY ADMINISTRATION
FEDERAL LANDS HIGHWAY

U.S. CUSTOMARY STANDARD

**G4 W-BEAM GUARDRAIL
WOOD POSTS**

STANDARD APPROVED FOR USE 1/1994	STANDARD
REVISED: 4/1994 6/2005	617-10
DRAFT: 10/2013	