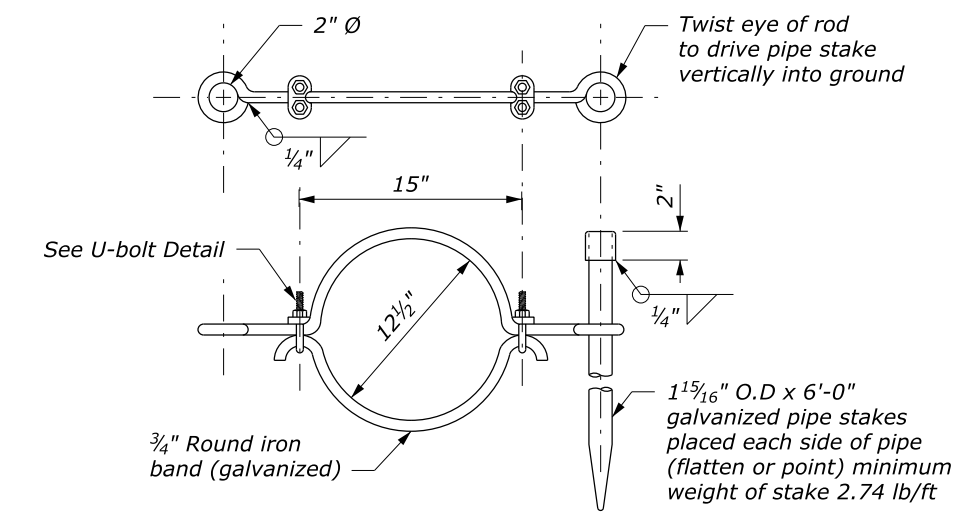
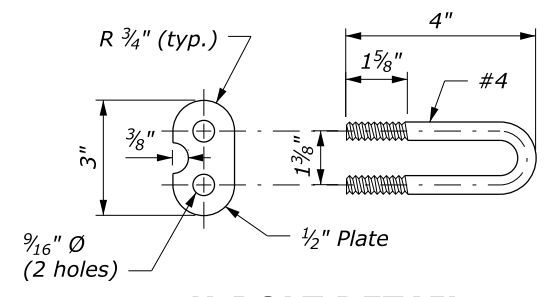


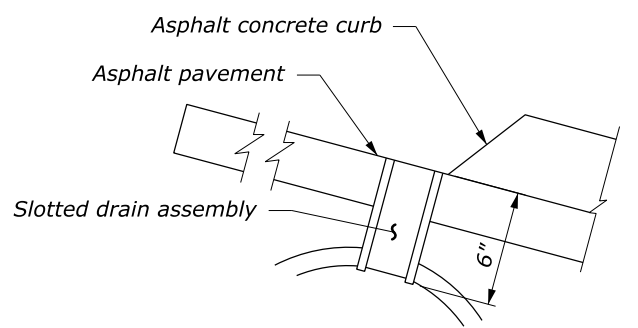
ALTERNATE 1



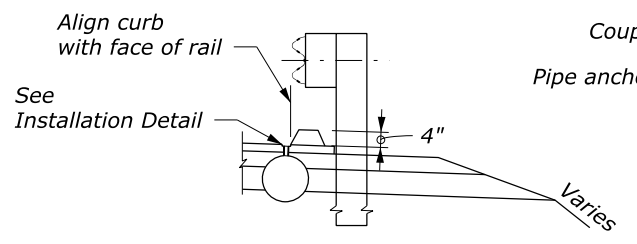
ALTERNATE 2



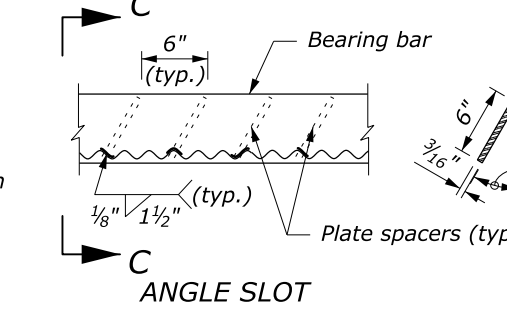
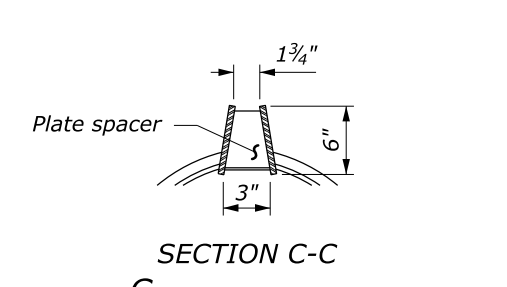
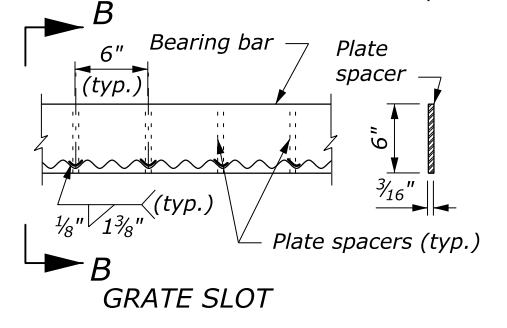
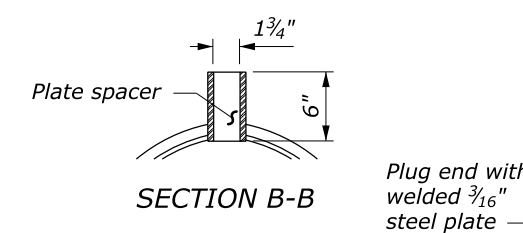
U-BOLT DETAIL



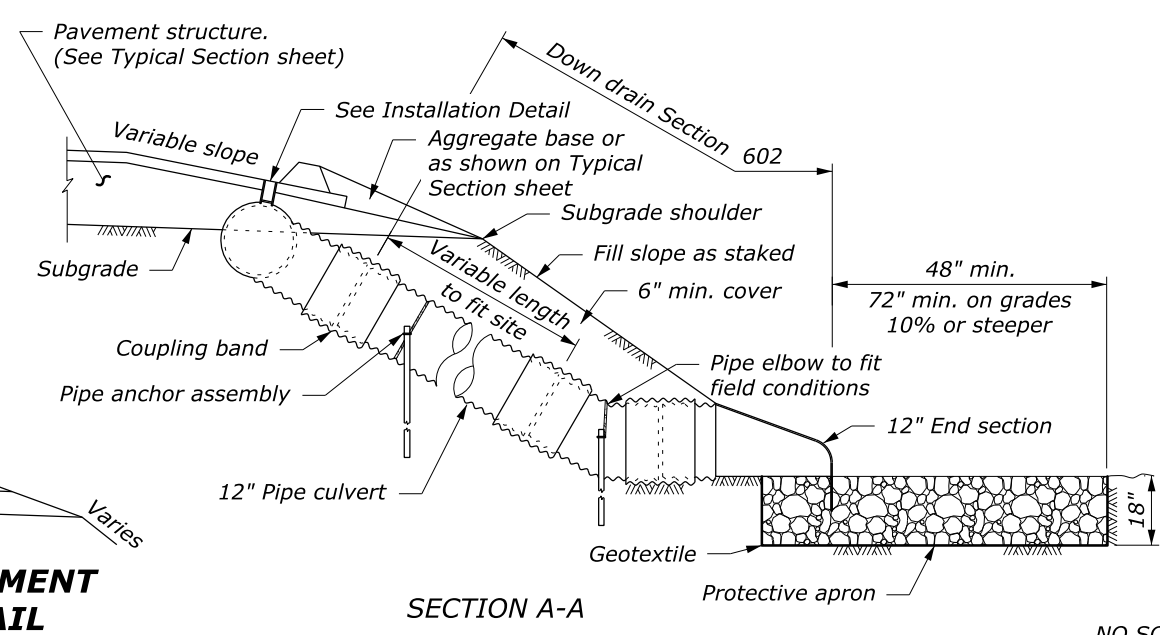
INSTALLATION DETAIL



TYPICAL PLACEMENT AT GUARDRAIL



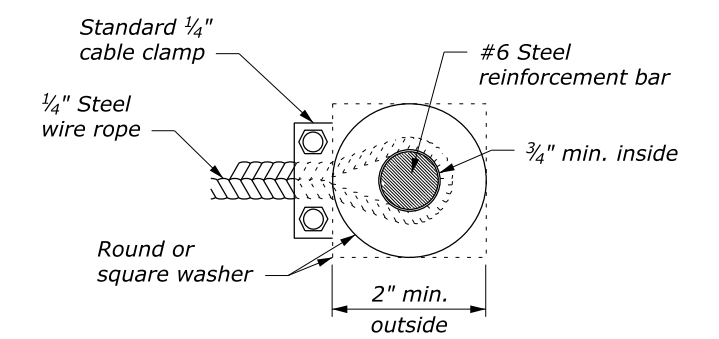
SLOTTED DRAIN ASSEMBLY



SECTION A-A

NOTE:

1. Fabricate slotted drain pipe, down drain pipe culvert, elbows, end section, and coupling bands from sheets 1/16" thickness.
2. Grate slot assembly and plate end plug conform to AASHTO M 183.
3. Galvanize grate slot assembly, plate end plug, and all hardware according to AASHTO M 111.
4. Approved alternate pipe anchor assemblies may be used.
5. Place Class 2 riprap conforming to Section 251 for protective apron.
6. Place pipe anchor assemblies approximately 20-foot intervals along down drain pipe culvert. Place a minimum of 2 anchors per down drain.
7. For installations at sag vertical curves, use a tee connection instead of an elbow and a minimum of two 20-foot slotted drain pipe sections.
8. Place gaskets under all band connections in accordance with Section 602. Refer to Standard 602-2 for coupling band details.
9. Use either the grate slot or the angle slot slotted drain assembly.



DETAIL A

U.S. DEPARTMENT OF TRANSPORTATION
FEDERAL HIGHWAY ADMINISTRATION
FEDERAL LANDS HIGHWAY

U.S. CUSTOMARY STANDARD

**SLOTTED DRAIN
SPILLWAY ASSEMBLY**

STANDARD APPROVED FOR USE 6/2005

REVISOR: 3/2014

STANDARD 606-1

NO SCALE